


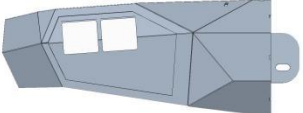

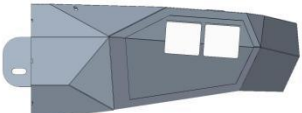



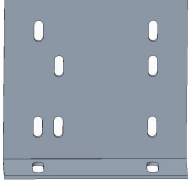
MAKE A DIFFERENCE


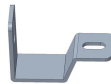
Front Bumper

BXG.8200-S

(1)Contents:

 <p>Bull Bar</p>		
 <p>Left Wing</p>	 <p>Main Body</p>	 <p>Right Wing</p>
 <p>Winch Bracket</p>		

Accessories		
Qty	Part Name	Picture
1	Winch Power Control Box Bracket	

2	Nut Plate	
2	Connect Bracket	

Bolts			
Qty	Part Name	Size(mm)	Picture
4	Hex Bolts	M12*35	
10	Hex Bolts	M12*30	
8	Hex Bolts	M8*20	
6	Button Head Socket Cap Bolts Screws	M8*20	
14	Split Lock Washer	D12	
12	Split Lock Washer	D8	
24	Flat Washer	M12*30*2	
12	Flat Washer	M8*16*1.5	
14	Flange Hex Lock Nuts	M8	
10	Hex Nuts	M12	

(2)Tools required:

- A. 19mm Socket Wrench;
- B. 18mm Wrench;
- C. 13mm Wrench;
- D. 5mm HEX Socket Wrench;



(3)Installation time:

About 1.5 hours, 2-3 people may be needed. Installation time may differ according to your mechanical skill level.

(PLEASE VERIFY ALL PARTS ARE PRESENT AND READ INSTRUCTIONS CAREFULLY BEFORE STARTING INSTALLATION!)

To view the electronic version (BXG.8200-S), please scan the QR code.

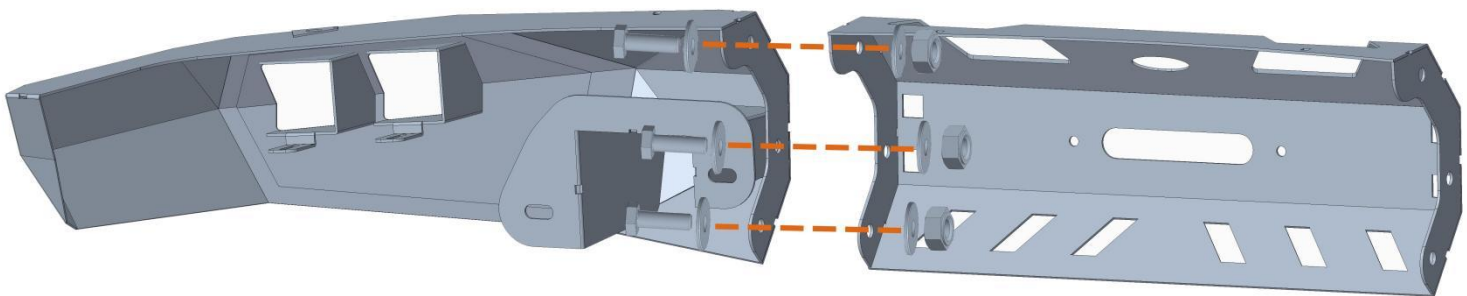


(4) Installation instruction:

Step 1: Remove the factory bumper. Ready to install this bumper.

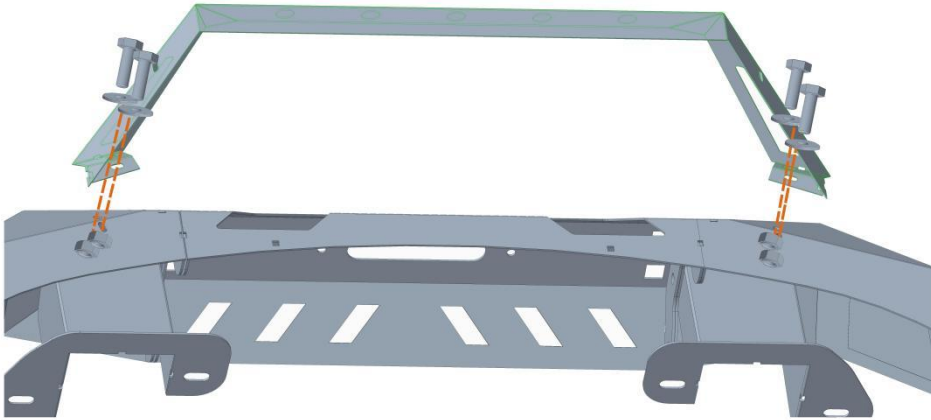


Step 2: To assemble the wings & the main body. Use the Hex Bolts (M12*30), Split Lock Washer (D12), Flat Washer (M12*30*2), Hex Nuts (M12). Repeat the same installation methods in the other side.

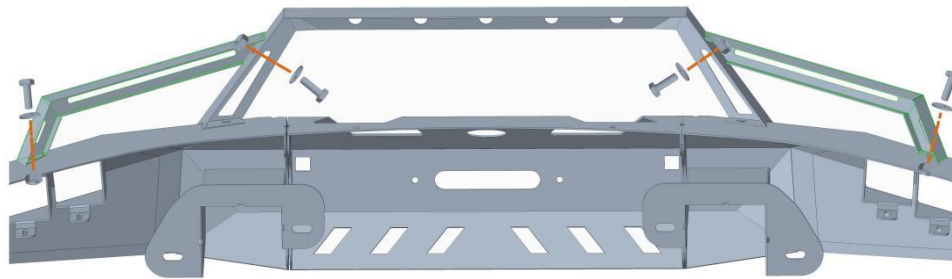


- (3) M12*30 Hex Bolts
- (3) D12 Split Lock Washer
- (6) M12*30*2 Flat Washer
- (3) M12 Hex Nuts

Step 3: To install the bull bar into the main body. Use the Hex Bolts (M8*20), Split Lock Washer (D8), Flat Washer (M8*16*1.5), Flange Hex Lock Nuts (M8).

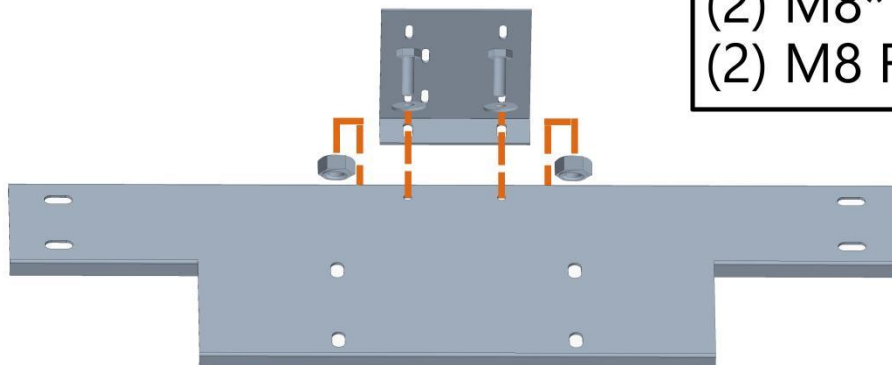


- (4) M8*20 Hex Bolts
- (4) D8 Split Lock Washer
- (4) M8*16*1.5 Flat Washer
- (4) M8 Flange Lock Hex Nuts



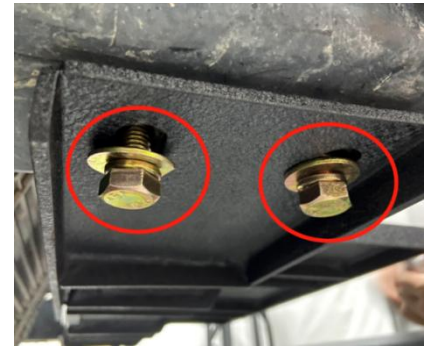
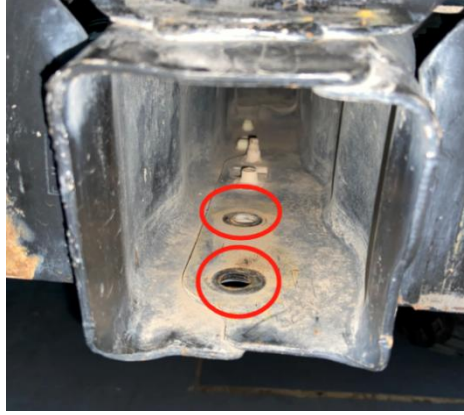
- (4) M8*20 Hex Bolts
- (4) D8 Split Lock Washer
- (4) M8*16*1.5 Flat Washer
- (4) M8 Flange Lock Hex Nuts

Step 4: To assemble the winch power control box bracket & the winch bracket. Use the Button Head Socket Cap Bolts Screws (M8*20), Split Lock Washer (D8), Flat Washer (M8*16*1.5), Flange Hex Lock Nuts (M8). **This step isn't 100% necessary. Depends if you have the winch power control box.**

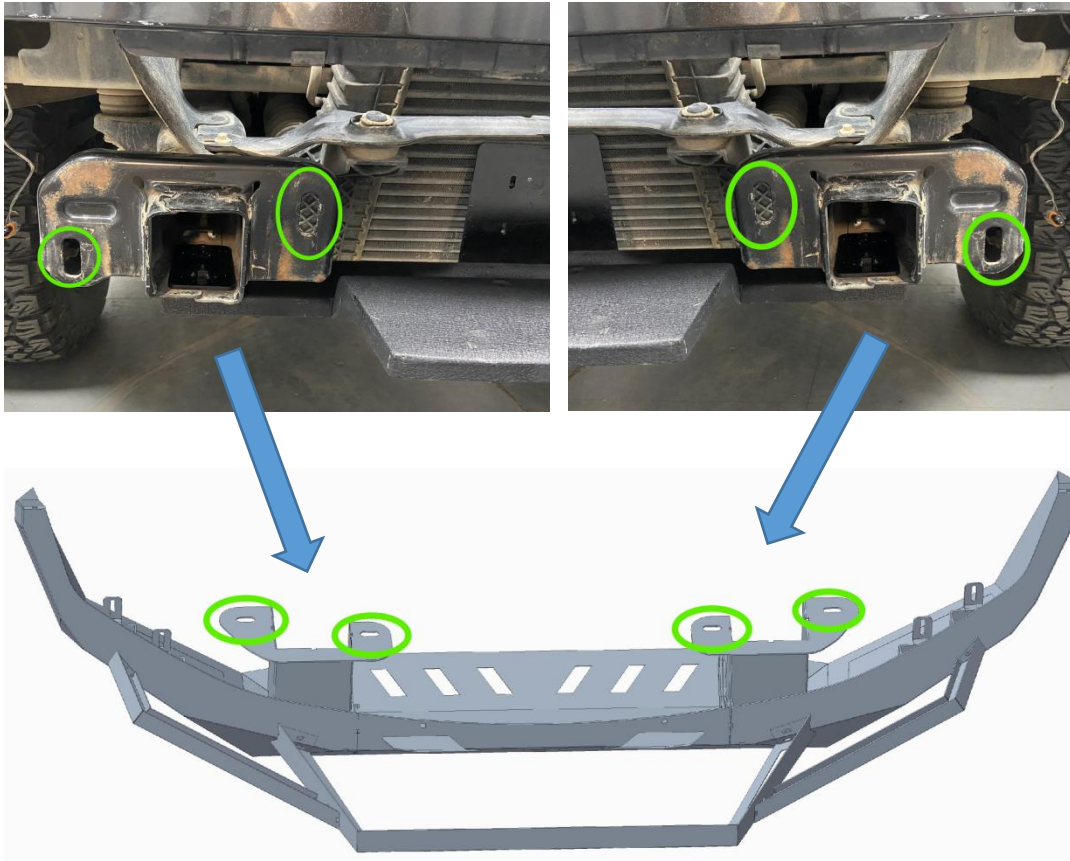


- (2) M8*20 Hex Bolts
- (2) D8 Split Lock Washer
- (2) M8*16*1.5 Flat Washer
- (2) M8 Flange Lock Hex Nuts

Step 5: Put the nut plate into the vehicle body. To install the winch bracket into the vehicle body. Use the Hex Bolts (M12*30), Split Lock Washer (D12), Flat Washer (M12*30*2).

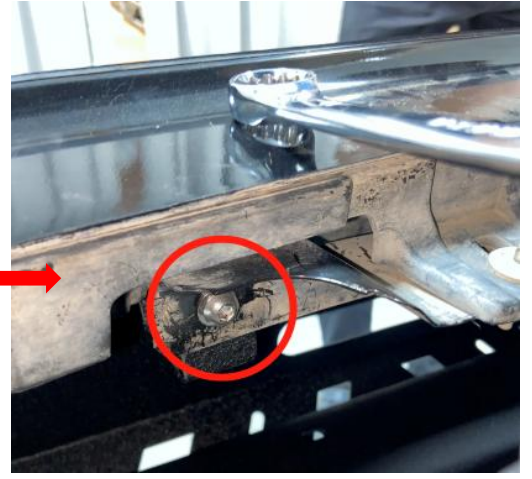
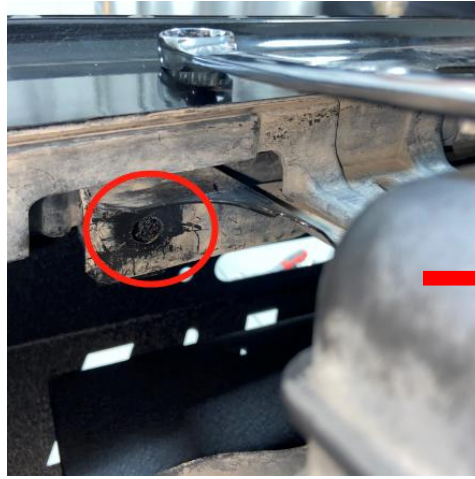


Step 6: Lift up the bumper and install it into your vehicle. Use the Hex Bolts (M12*35), Split Lock Washer (D12), Flat Washer (M12*30*2), Hex Nuts (M12).



Step 7: To connect the bumper and the vehicle with the connect bracket. Use the Button Head Socket Cap Bolts Screws (M8*20), Split Lock Washer (D8), Flat Washer (M8*16*1.5), Flange Hex Lock Nuts (M8). The upper bolts don't need install the flat washer & the split lock washer.





Step 8: Keep the bolts loose, raise the bumper, adjust the gap between it and the car, and then tighten up all of bolts after confirming that the desired effect is achieved.



Step 9:

The installation is complete. We hope you enjoy a wonderful off-road life with this quality Hooke Road product!



Attention:

1.The product parts in this instruction may differ slightly from the actual product contents but generally does not affect the installation of the product.

2.Please feel free to contact your distributor if you have any kind of question about your purchase.

Google Hooke Road to find your parts.

Feel Free To Share Your Vehicle [@HookeRoad4x4](#)
With The Hashtag #hookeroad If You'd Like

