

Important: Read all instructions prior to installation.

LED Dimmable Panel Light



LPD-40K24-40-SMK

Safety and Notes

- Product should be installed and serviced by a certified electrician in accordance with applicable national, state, and local building and electrical codes.
- To reduce the risk of electric shock, ensure that the main power source and circuit breakers are switched off before performing any installation or wiring procedures.
- Avoid looking directly into lamp when illuminated.
- Ensure all mounts are securely attached and will support the weight of the fixture. Failure to properly support fixture may result in damage or injury, for which the manufacturer does not assume responsibility.

Specifications

	LPD-xK24-40	LPD-xK22-40	LPD-xK14-40
Operating Temperature	-4°–104° F (-20°–40° C)		
IP Rating	IP20		
Weight	16 lb 5oz (7.4 kg)	8 lb 2oz (3.7 kg)	8 lb 12oz (4 kg)

Check product label for specific electrical specifications related to installation.
Improper installation will void warranty.

Recessed Installation

Note: Recessed Mounting Kit Required (LPD-JBK)

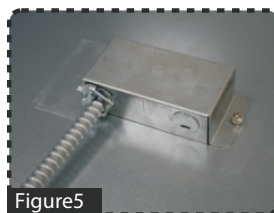
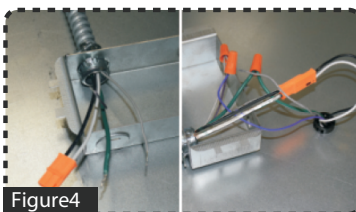
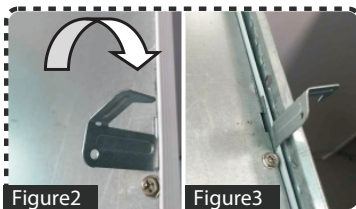
1. Turn off power and remove existing fixture or remove ceiling tile.

2. Bend each t-bar safety hook away from panel until facing perpendicular to panel backing. Bend hook arm until facing perpendicular to hook body. (Fig. 2 & 3)

3. Remove the knockout hole on the junction box. Run wiring through hole and secure conduit. (Fig. 4) Connect all wiring according to the wiring diagram.

4. Attach junction box to panel backing by inserting the tabs from the junction box into the slots on the panel backing. Secure to the panel with provided screw. (Fig. 5)

5. Place panel into T-grid, making sure it is securely supported.



Mounting Options

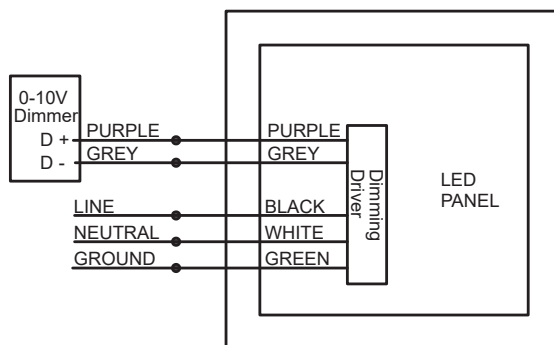
Recessed Mounting Kit (LPD-JBK)
sold separately

- 1 - Junction Box
- 1 - Attachment Screw

Surface Mounting Kit (LPD-SMK24, LPD-SMK22, LPD-SMK14)
sold separately

- 1 - Surface Mount Bracket
- 7 - Screws
- 7 - Screw Anchors
- 1 - Cable Service Loop
- 1 - Cable Service Loop Screw

Wiring Diagram



Important: Read all instructions prior to installation.

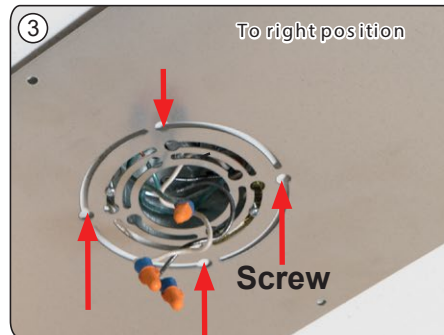
LED Dimmable Panel Light

Surface Mount Kit Installation

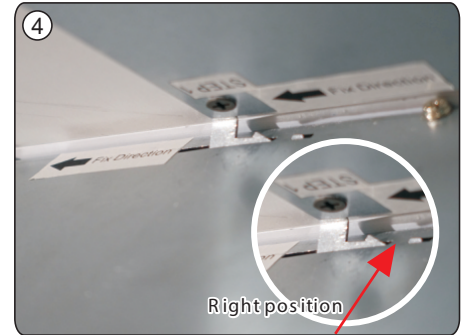
1. Turn off power and run supply wiring through junction box. Connect wiring using wiring diagram. (Fig. 2)



2. Attach surface mounting bracket to junction box and align to the desired orientation. Mark screw holes and drill pilot holes. Remove bracket and insert screw anchors into mounting surface at marks. Reinstall bracket to junction box and install mounting screws. (Fig. 3)



3. Screw steel cable service loop to light panel (Fig.5). Align the hooks labeled "Step 1" on the surface mounting bracket with the larger slots along the edge of the panel backing labeled "Step 1" and slide to lock in place. (Fig. 4)



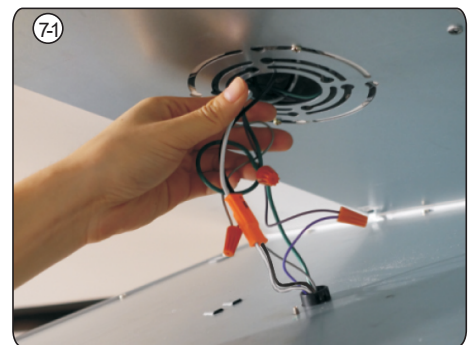
4. Attach the steel cable service loop from the panel to one of the surface mount bracket hooks to hold the panel while wiring. (Fig. 5)



5. Connect the ground wire. Connect the two orange quick disconnects together. Connect the 0-10 V dimming wires according to the wiring diagram if needed. (Fig. 6)



6. Tuck wiring into junction box, being sure not to pinch wires. (Fig. 7-1)



7. Lift panel onto remaining hooks on surface mounting bracket while aligning to remaining slots on panel. Slide panel to lock into place. (Fig. 8-1 & 8-2)

