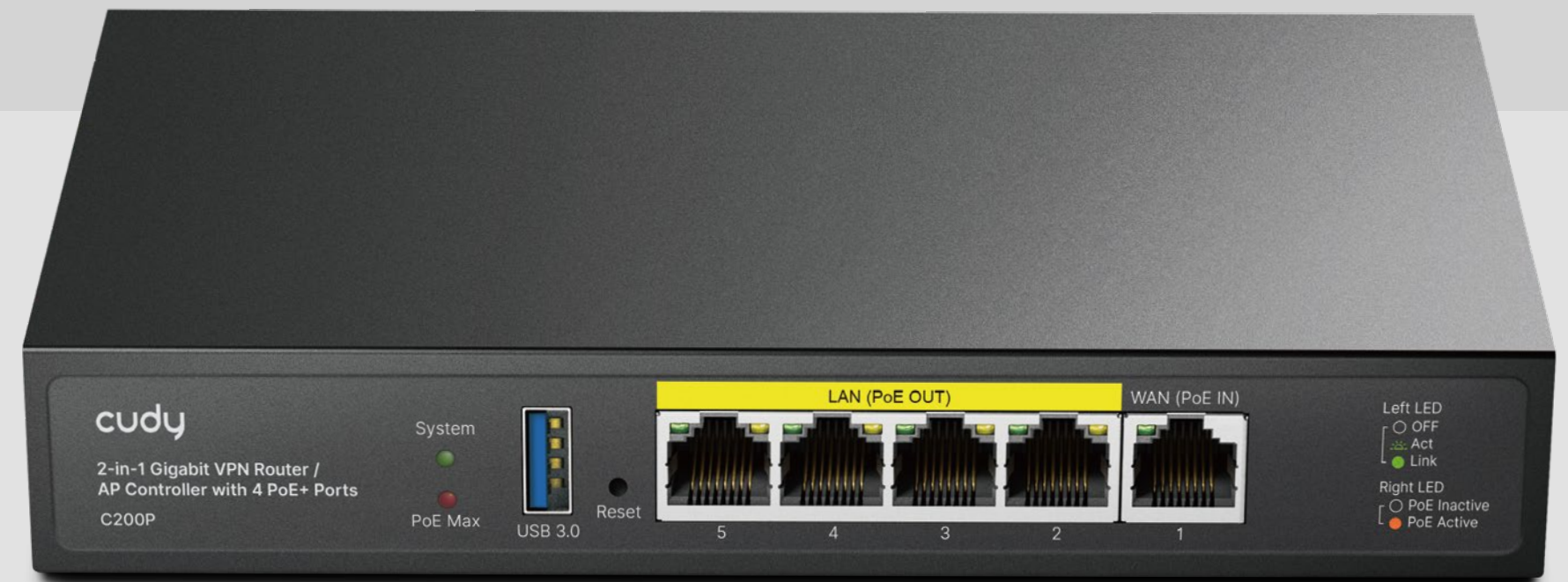


Model: C200P

2-in-1 Gigabit VPN Router/ AP Controller

with 4 PoE+ Ports



4

PoE+ Ports

60W

Power Supply



Business Solution



USB 3.0

Reset
Button

4×Gigabit
LAN (PoE)

1×Gigabit
WAN

Highlights

A Gigabit router working as the controller of Cudy Access Points in whole-home Wi-Fi demands, featuring four PoE outputs and Cudy Mesh features.

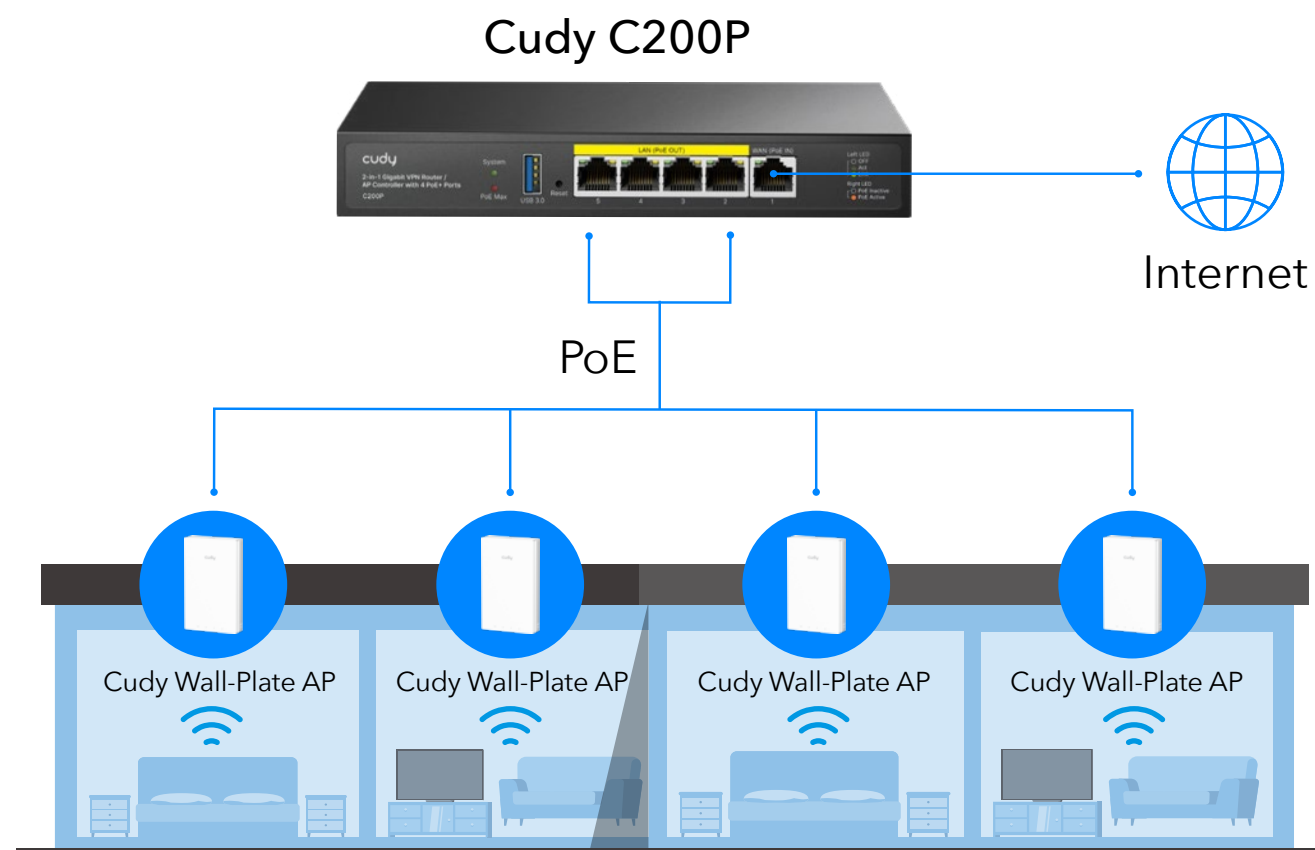
- 4× GbE with 802.3at/af Mode A PoE
- 1× Gigabit Ethernet Port
- 1× USB 3.0 Port
- 60W Power Supply
- Captive Portal
- Cudy Mesh, VPN Server and Client

Package Content

- C200P
- Power Adapter
- Ethernet Cable
- Installation Guide
- Mounting Kit

Versatile 2-in-1 Router/AP Controller

C200P combines the functionality of router and AP controller, enabling centralized management of multiple APs and streamlining network topology. It can also be used solely as AP controller to accommodate diverse networking needs.



Centralized Network Management

Provide centralized control for Cudy Access Points through a unified management interface.



Quick Setup



AP Management



Multi-SSID

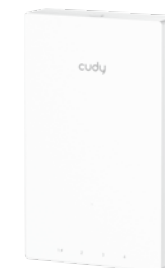


Captive Portal

Compatible with Cudy APs

Connect with multiple Cudy Access Points to build a wireless network, providing seamless roaming across your home/office.

Cudy Access Points



Wall-Plate



Ceiling-Mount



Outdoor



Desktop



Hardware Specs

Model Version	C200P 1.0	
CPU	Chipset	MT7621A
	CPU Details	880 MHz Dual-Core
Memory/Storage	Flash/ROM	16 MB (128 Mbit) NOR
	DDR/RAM	256 MB (2 Gbit) DDR3
Interfaces	Gigabit RJ45 Ports	5
	Gigabit RJ45 PoE Ports	#2~#5
	Max Power on a Single PoE Ports	30W
	PoE Ports Notes	The PoE ports comply with IEEE 802.3at/af standards.
	Ethernet Notes	1×WAN Port, 4× LAN Ports
	USB-A 3.0 Ports	1
	LED	• System
		• PoE Max Status
		• Link/ACT/PoE Status of Each PoE Port
	Physical Buttons	Reset Button
Power	Power Methods	DC
		802.3at/af PoE
		Passive PoE
	DC	54V 1.11A
	Passive PoE	24/48V
	Power Adapter	Input: 100 ~ 240 V, 50 Hz AC
		Output: 54V 1.11A DC

	Max Power Consumption (W)	Total: 60W
		PoE: 55W
		PoE (when USB Device is plugged in): 50W
		No PoE: 5W
	Idle Power Consumption (W)	2W
Reliability	EMS	IEC/EN 61000-4-2, Level 3 ESD: Contact: 6kV; Air: 8kV
	Environment	Operating Temperature: 0 °C ~ 40 °C (32 °F ~104 °F)
		Storage Temperature: -40 °C ~ 70 °C (-40 °F ~ 158 °F)
		Operating Humidity: 5% ~ 95% non-condensing
		Storage Humidity: 0% ~ 100% non-condensing
Grounding Methods	Grounding Point	
Certifications	FCC, CE	
Mechanical	Installation	• Desktop
		• Wall-mount
	Casing Material	Metal
	Dimension	190×100×28 mm
		7.48×3.94×1.1 inches
Package Content	• C200P	
	• Power Adapter	
	• Ethernet Cable	
	• Installation Guide	
	• Mounting Kit	



Software Specs

Model Version	C200P 1.0	
General	WAN Mode	•DHCP
		•Static IP
		•PPPOE
	Recommended Number of APs	1. Main Router and AP Controller Mode: 100
		2. AP Controller Mode: 200* * If using the external portal server feature, it is recommended to manage fewer than 200 APs.
Recommended Number of Clients	1. Main Router and AP Controller Mode: 100	
	2. AP Controller Mode: Not limited by controller	
Network	QoS	Rate Limiting
	DHCP	•Address Reservation
		•DHCP Client List
		•Server
	IP Versions	IPv4/IPv6
	IPv6 Protocols	•Relay
		•Dynamic (SLAAC/DHCPv6)
		•Static (Fixed IP)
		•Passthrough
		•464XLAT
•MAP-E		
•DS-Lite		
TTL Customization	•Extend	
	•Spoof	
	•Custom	

Utilities	IGMP	•IGMP Proxy
		•IGMP Snooping
	Forwarding	•Port Forwarding
		•Port Triggering
		•UPnP
		•DMZ
	Firewall	•SPI Firewall
		•DoS Protection
		•Block PING
	Application Layer Gateway	•IPSec Passthrough
		•L2TP Passthrough
		•PPTP Passthrough
		•FTP Passthrough
		•TFTP Passthrough
		•H323 Passthrough
		•SIP Passthrough
		•RTSP Passthrough
	VPN Server	•WireGuard
		•OpenVPN
	•IPsec	
	•Zerotier	
	•PPTP	
	•L2TP	
VPN Client	•OpenVPN Client (UL/DL): 22 / 24.7 Mbps	
	•OpenVPN Server (UL/DL): 22 / 20.9 Mbps	



Management		•WireGuard Client (UL/DL): 142 / 233.9 Mbps
		•WireGuard Server (UL/DL): 213 / 152 Mbps
	Max Concurrent	•IPSec: 20
	VPN Tunnels	•PPTP/L2TP: 16
	DNS Options	•OpenVPN: 16
		•DNS over TLS
		•Manual DNS
		•Rebind Protection
		•Override Clients' DNS
	DNS over TLS Providers	•Cloudflare
		•Google
		•Quad9
		•Custom
	USB Functions	Samba Server
	Wake on LAN	True
	Online Detection	True
	All Devices Management	•Wi-Fi Time Schedule
		•MAC Filter
		•IP/MAC Binding
	Per-Devices Management	•Internet On/Off
		•VPN On/Off
		•Online Time Schedule
		•Device Rename
	Content Management	•Domain Filter
		•IP Filter
	AP Management	Captive Portal, Multi-SSID (Up to 4 SSIDs)

		on each band)
System	Local Control Method	Config Web Page
	Remote Control Method	•Config Page via HTTPS
		•TR069/TR098/TR111/TR181
	Firmware Upgrade	Local Update
	Reliability	Timed Reboot
		Backup and Restore
	Diagnostic Tools	•Diagnosis
		•Ping
		•Traceroute
		•NSLookup
•System Log		
Dashboard	Panel	•Internet Status
		•WAN Status
		•LAN Status
		•VPN Status
		•DHCP Server Status
		•System Version
		•AP Management
System	Languages	•English •Bengali •Catalan •Czech •German
		•Greek •Spanish •French •Hebrew •Croatian
		•Hungarian •Italian •Japanese •Khmer
		•Korean •Dutch •Norwegian •Polish
		•Portuguese •Romanian •Russian •Slovak
		•Swedish •Thai •Turkish •Ukrainian
		•Vietnamese •Simplified Chinese