

Product Features



Manual Laser Welding Machine

1000W 1500W 2000W

Simple operation, Beautiful
welding seam
Fast welding speed, No
consumables

Products Feature



Welding Firmly

Applicable to a variety of metals
or alloys

No depression at the junction
of the convex part of the
molten pool and the
substrate



Products Feature



Welding Seam Beauty

Small welding heat affected area

Won't cause the workpiece to be deformed, blackened, and traces on the back

Products Feature



Smooth wire feeding

Automatic wire feeding speed can be adjusted

Can be widely used in aluminum alloy, stainless steel, low carbon steel and other materials



Welding machine technical parameters



model	Output Power	Laser Wavelength
JW-BX 1000/1500/2000	1000W/1500W/2000W	1064NM
Water Chiller	Laser	Welding Head
BingYue/Portable /Regular	Raycus /Max/Reci/国志	Qiling/Chaoqiang Weiye
Working Method	Laser frequency	Maximum single pulse energy
Continuous modulation	0-100HZ	120J
Focus spot diameter	laser cooling	Protective gas
0.2-3.0MM	Water Cooling	Argon Nitrogen
Continuous working time	Machine powered	Whole Machine Weight
≥24h*7	220V/380V	90kg

Wire feeder technical parameters



Voltage AC220V 50hz/60hz	Rotating speed 1200 rpm	Wire Spool Size 305 mm
Wire Size 0.8mm,1.0mm,1.2mm	Wire feeding speed 0-600cm/min	Speed regulation accuracy $\pm 1\%$
Jog wire feed speed 200 cm/min	Jog wire back 100cm/min	Weight 17.5 KG

Welding process parameters

Penetration parameters		
Material	Output Power W	Max Penetration (mm)
MS/ SS	1000	3
MS/SS	1500	4
MS/SS	2000	5
Aluminum alloy	1000	2
Aluminum alloy	1500	3
Aluminum alloy	2000	4

Handheld welding head without wire feed parameters (continuous mode)				
Material	Thickness (mm)	Laser Power (W) Weld Firmly/ penetration	Swing frequency(HZ) Weld Firmly /Penetration	spot size(mm) Weld Firmly/Penetration
MS / SS	0.5	270/300	150/150	0.7
	1	450/550	140/140	1.5
	1.5	550/570	100/100	2
	2	750/900	100/100	2
	2.5	900/1050	100/100	2
	3	1050/1200	100/100	2
	3.5	1200/1350	100/100	2
	4	1350/1500	100/100	2
	5	1700/2000	100/100	2
Alumi num	1	670/750	100/100	2
	1.5	750/900	100/100	2
	2	900/1100	100/100	2
	2.5	1100/1250	100/100	2
	3	1350/1500	100/100	2
	4	1850/2000	100/100	2

Remarks: The weld width that can be welded by hand-held head without wire feeding is 10% of the material thickness

— Laser High-end configuration Optional —



可选：【创鑫激光器】

▶ Max Laser Feature

- ▶ Domestic first-line brand, stable performance
- ▶ Maintenance convenience, reduces downtime
- ▶ Multi-scenario, wide application
- ▶ Can be customized to meet a variety of needs



可选：【锐科激光器】

▶ Raycus Laser Feature

- ▶ Domestic first-line brand, stable performance
- ▶ Modular design for easier maintenance
- ▶ Independent control reduces downtime
- ▶ Intelligent monitoring, easy to operate

The single-mode continuous fiber laser adopts a modular design, the system is highly integrated, and the reliability is high. The laser power is continuously adjustable and the laser stability is high. It is an ideal laser source for applications such as laser fine cutting and precision welding.

== Laser standard optional ==

▶ 国志 laser feature

- ▶ Domestic well-known brand, high cost performance
- ▶ Easy maintenance and less downtime
- ▶ High light conversion efficiency
- ▶ High frequency of laser welding



可选：【国志激光器】

▶ Reci Laser Features

- ▶ Domestic well-known brand, high cost performance
- ▶ Modular design for easier maintenance
- ▶ Set high power, light size
- ▶ Intelligent monitoring, easy to operate



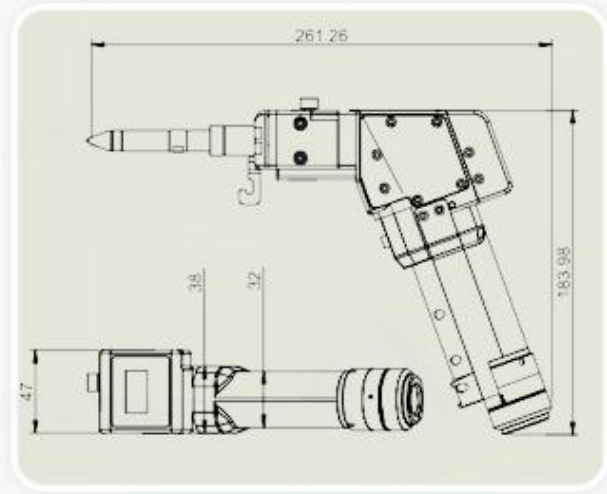
可选：【热刺激激光器】

A new generation of single-module laser, this product integrates high power, light size, user-friendly control, high-quality beam quality, and high light conversion efficiency. It can meet the requirements of precision processing, suitable for remote processing, high frequency of laser cutting, high cutting surface finish, can be high speeding

Welding Head High End Optional



Optional : Qiling Welding Head



【麒麟焊接头规格尺寸】

Connect Type	Focusing Length	Laser Power
QBH	120/150	2000W
adjustable range	Collimating Length	Weight
0-- 5mm	50/75	1KG

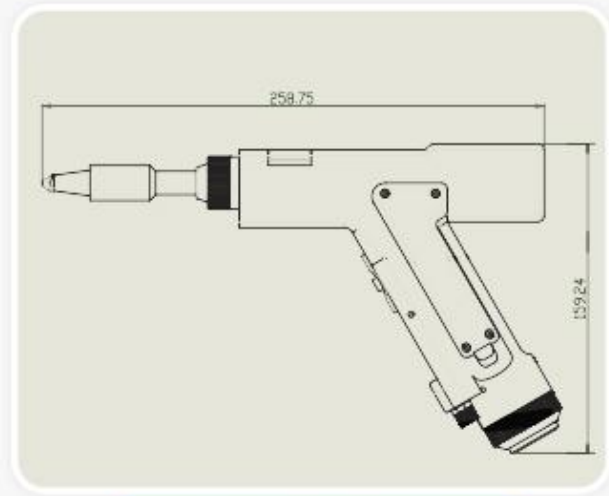
Artificial intelligence, remote control. Data storage, can save the process. Fault monitoring for quick troubleshooting. Intelligent decryption, flexible use. Serial communication, adjustable wire feeding. Strong anti-interference, safe and stable. Ergonomic design, easy to operate. Control box integrated design, easy to install

Qiling welding head is a powerful hand-held welding head, which can realize point, coil, triangle, 8 characters and other light output modes. Lightweight and flexible, the grip design is ergonomic. The protective lens is easy to replace. High quality optical lens, can carry 2000W power

Welding Head Standard



Optional : ChaoQing Weiye Welding Head



【超强伟业焊接头尺寸】

Interface Type	Focusing Length	Laser Power
QBH	120/150	1500W
adjustable range	Collimating Length	Weight
0-- 6mm	50	1.5KG

This product covers hand-held welding gun and self-developed control system. It uses ST high-speed processor and sets up multiple safety alarms, active safety power-off, and segment light settings. This product can be adapted to various brands of fiber lasers; the optical and water-cooled design is optimized so that the laser head can work stably for a long time at 2000W

Basic features: self-developed control system, setting multiple security alarms, smaller size, flexible operation, and easy to use. More stable: all parameters are visible, real-time monitoring of the state of the whole machine, avoid problems in advance, more convenient troubleshooting and problem solving, and ensure the stable operation of the welding head

Chiller Manual Instruction

Corresponding relationship between different volume ratios of ethylene glycol and freezing point

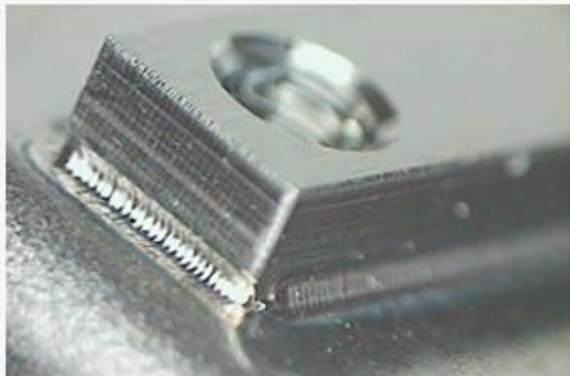
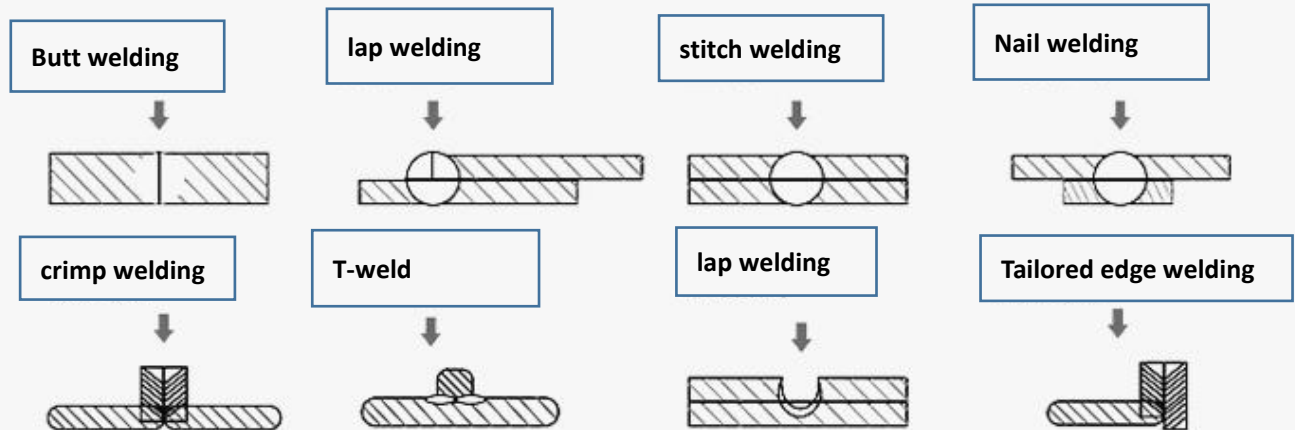
Volume fraction ratio %	freezing point °C	Volume fraction ratio %	freezing point °C	Volume fraction ratio %	freezing point °C
1.8	-0.6	26	-13.0	51.9	-41.0
3.6	-1.3	28	-15.0	53.9	-44.0
5.4	-2.0	29.9	-17.0	56.0	-48.0
7.2	-2.7	31.9	-18.0	78.9	-47.0
9.1	-3.5	33.8	-20.0	81.0	-43.0
10.9	-4.4	35.8	-22.0	83.1	-40.0
12.8	-5.3	37.8	-24.0	85.2	-36.0
14.6	-6.3	39.8	-26.0	87.3	-33.0
16.5	-7.3	41.8	-28.0	89.4	-29.0
18.4	-8.0	43.8	-31.0	91.5	-26.0
20.3	-9.0	45.8	-33.0	93.6	-23.0
22.2	-11.0	47.8	-36.0	95.8	-19.0
24.1	-12.0	49.8	-38.0	100	-13.0

- ▶ Check the condenser, check whether the air duct is blocked by foreign objects, and whether the air in and out around the equipment is unobstructed
- ▶ Check whether there is foreign matter in the cooling medium, whether it breeds microorganisms, etc. Generally, replace the cooling medium within 15-20 days. The cooling medium must be pure water, distilled water or high-purity water.
- ▶ Check whether the water joints are loose and the water pump is leaking
- ▶ Regularly clean the filter element in the water circuit of the equipment, generally cleaning the filter every 7-10 days. There are two kinds of filters commonly used by our company, as shown in Figure 13. The Y-type filter is installed at the water suction of the pump or the water outlet of the equipment, and the built-in stainless steel filter is installed in the tank

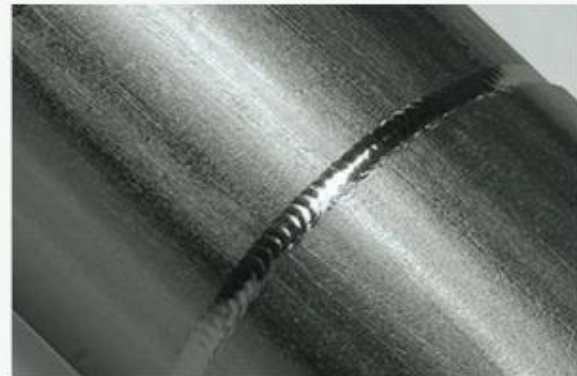
Welding process display

Welding at various angles

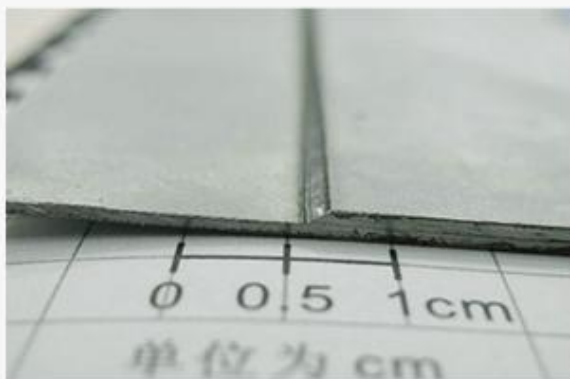
Meet any of your welding needs



Inside corner seam welding



fillet seam welding



stitch welding



External corner seam welding

DIMENSION
REFERENCE

模拟参考

Small size , big purpose

Can put the trunk, can enter the elevator



Professional Repair Lasers

Repair and upgrade various brands of lasers

IPG, Roфин, SPI, Raycus, Max , Reci, Guozhi, JPT etc.....

Laser equipment repair and after-sales service, laser power upgrade and repair and maintenance services. Laser cutting head repair and installation services, cutting machine relocation and operation training related consumables replacement guidance



锐科激光器



IPG激光器



罗芬激光器



光模块



电模块



光纤、模块

Nanjing Aurora Laser Technolgy Co.,Ltd

Contacts / Whatsapp: : 86-18014837624

Email: lalita@nj-aurora.com.cn

Website: <http://www.nj-aurora.com.cn>