



NSA320S

Support Notes

Version 1.00

Dec, 2013



Contents

Chapter 1 Applications.....	4
1. NAS Starter Utility.....	4
1.1 NAS Starter Utility Installation.....	4
1.2 NSA320S Initialization.....	5
1.3 Network setting.....	7
1.4 zPilot.....	7
1.5 Directory.....	8
1.6 Device Management.....	9
1.7 Media Player.....	10
2. Auto Upload Service.....	13
2.1 Auto-upload pictures to Flickr.....	13
3. Package Management.....	19
3.1 Gallery.....	20
4. Dropbox.....	23
4.1 zDownload.....	26
5. SmartPhone.....	27
5.1 File Browser.....	28
6. Network IPv6.....	29
7. Access NSA320S via samba on Linux.....	30
8. Log in NSA320S via ftp on Linux.....	32
8.1 log in NSA320S via anonymous ftp on Linux.....	32
8.2 Access NSA320S with user name via ftp.....	33
9. Log in NSA320S via telnet on Linux.....	36
10. Access NSA320S via NFS.....	38
Chapter 2 FAQ.....	44
1. What is RAID?	44
2. What kind of RAID is supported in NSA320S?	44
3. What is the file system supported in NSA320S?	44
4. Which kind of the media server does NSA320S apply?	44
5. Does NSA320S support DLNA media server?	44

6. What is the feature "Wake On LAN"?	44
7. Which kind of video file formats are supported by NSA320S?	45
8. Which kind of audio file formats are supported by NSA320S?	45
9. Which kind of image file formats are supported by NSA320S?	45
10. Which kind of web browsers are supported by NSA320S?	45

Chapter 1 – Applications

1

1. NAS Starter Utility

1.1 NAS Starter Utility Installation

After you install a new hard drive on the NSA320S, please make sure to use the NAS Starter Utility to discover and access the NSA320S to assign an IP address by the DHCP server or a static option. The steps are as below.

- Double-click setup.exe. **NSU_2.10_build_1057**
- Click “Next” to begin the installation.

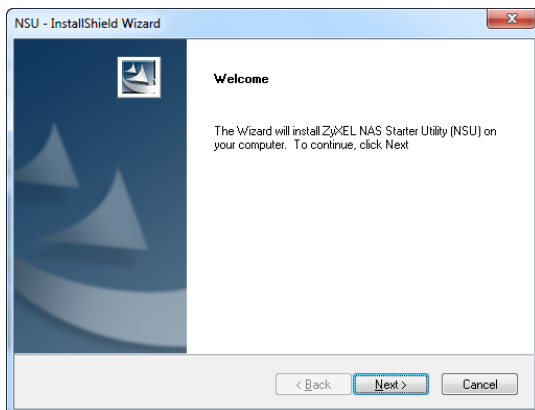


Figure 1. Click “Next”.

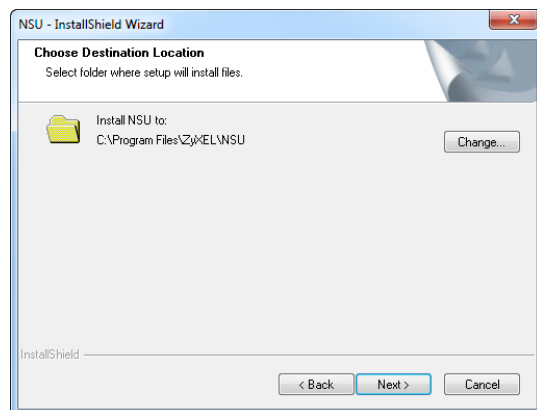


Figure 2. Select a folder to install the utility.

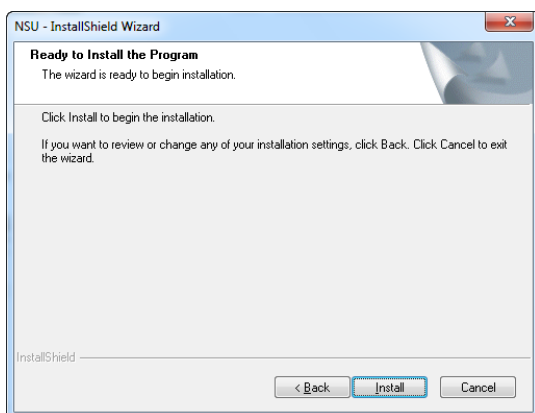


Figure 3. Click “Install”.

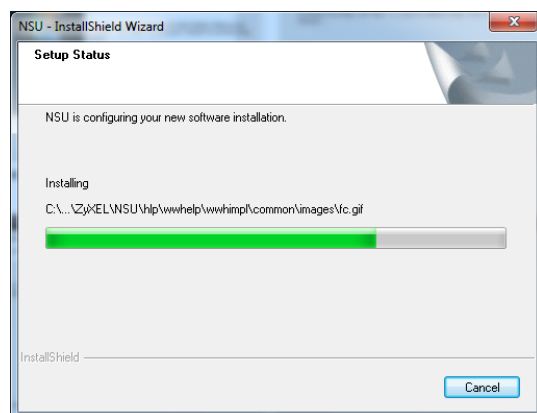


Figure 4. NSU Installation is processing.

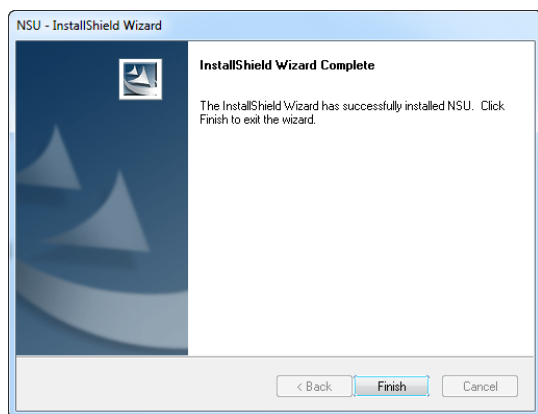


Figure 5. Installation is finished.

1.2 NSA320S Initialization

After a successful installation, click on the “NAS Starter Utility”. The first screen of the NSU will try to discover the NSA devices. Click on “NAS Seeker”, and then choose the devices that you want to connect.

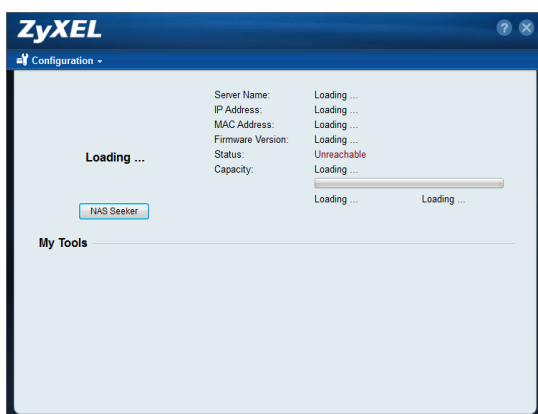


Figure 6. NAS Discovery.



Figure 7. NAS Seeker.

Then click **Run the Initialization Wizard** to setup the NSA320S, and enter the username and password to start the initialization. The default username is **admin** and the password is **1234**. These two words are case sensitive.



Figure 8. Run Initialization.

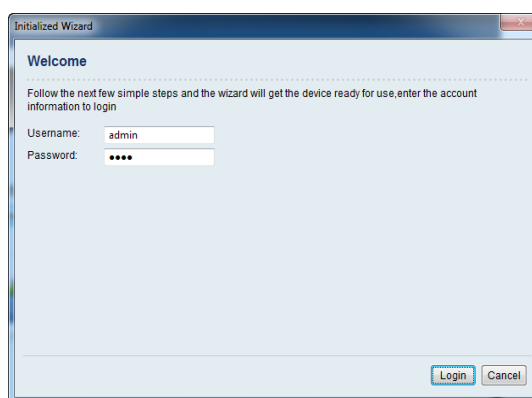


Figure 9. Enter username and password.

Choose **Default Configuration** or **Manual Configuration** and then click **Next**. Here, we recommend that users use **Default Configuration**. For security purposes, we suggest the users change the admin's password.

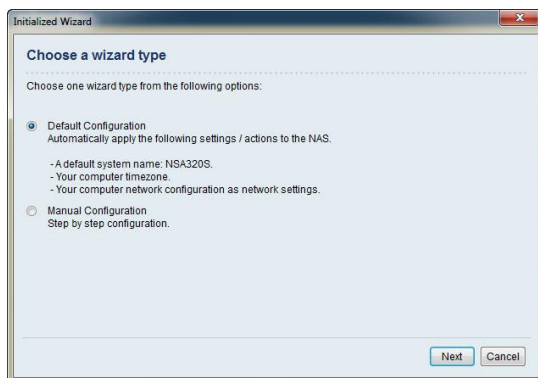


Figure 10. *Choose a wizard type.*

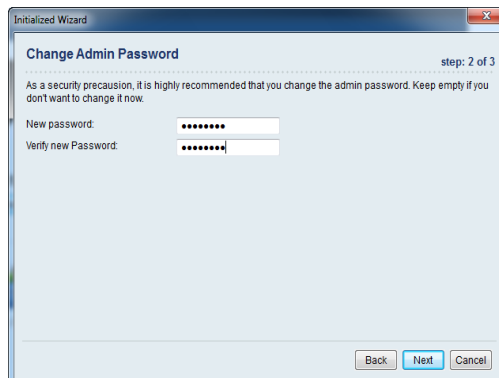


Figure 11. *Change the password.*

Check if the settings are correct and click **Next** to begin configuring the NSA320S.

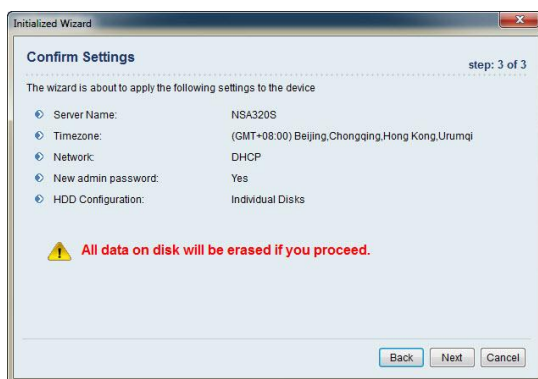


Figure 12. *Confirm settings.*

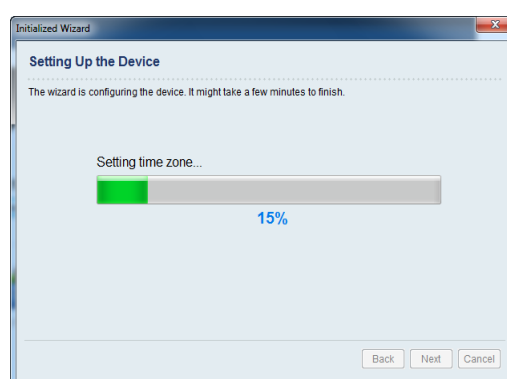


Figure 13. *NAS is under setting.*

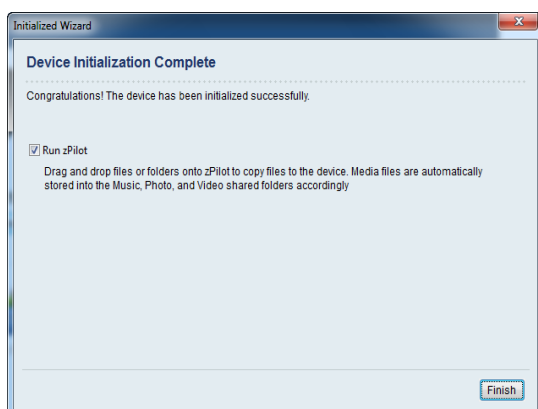


Figure 13. *Configuration is finished.*

1.3 Network Setting

After successful initialization, go back to the NSU main menu and click **Configuration > System Setting** to start configuring. You can assign a new hostname for this NSA320S, set the TimeZone and PPPoE connection information as well as an IP address for the NSA320S.

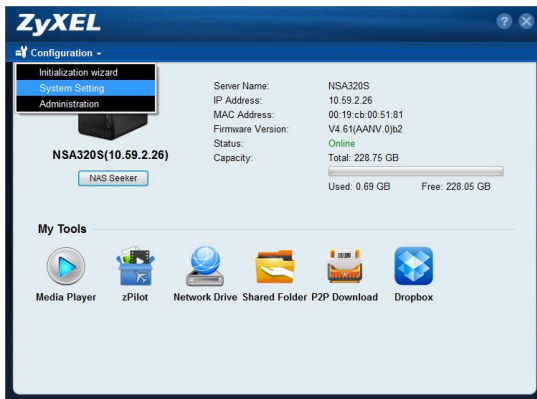


Figure 14. NSU main menu.

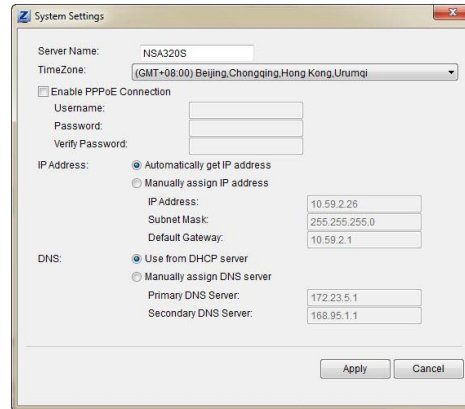


Figure 15. Configure an IP address for NSA320S.

1.4 zPilot

Click **zPilot** to launch zPilot. When you would like to upload files to NSA320S, just drag the files onto the zPilot icon. The files will be automatically uploaded and sorted based on their types: Music, Photos and Videos. The files which are not categorized in Music, Photos or Videos will be uploaded to the Public folder.



Figure 16. NSU main menu.



Figure 17. Enter the username and password to login.



Figure 18. zPilot icon

When users double-click on the zPilot icon, the detail status of zPilot will be shown as follows. Click **Clean Completed** to clear the finished tasks.

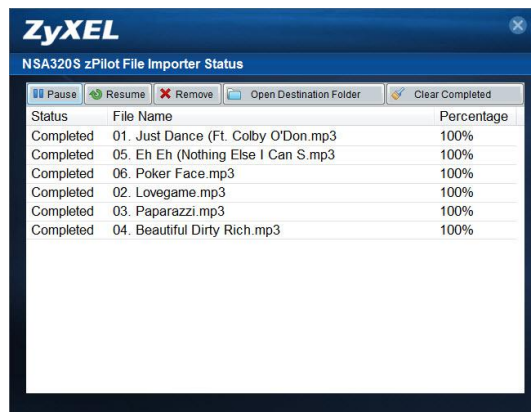


Figure 19. The zPilot is transferring files to NSA320S.

1.5 Directory

Click **Network Drive** and enter your username and password. Then the directory of NSA320S will appear. You will see the files that you uploaded through zPilot automatically categorized by their types.



Figure 20. NSU main menu.



Figure 21. Enter the username and password to login.

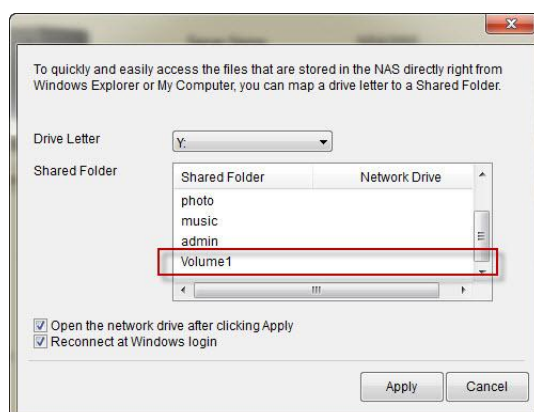


Figure 22. Select the NAS folder for directly on the PC

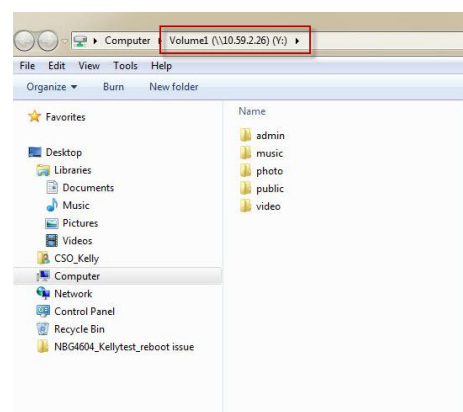


Figure 23. Directory of NSA320S.



Figure 24. Use Guest to login.

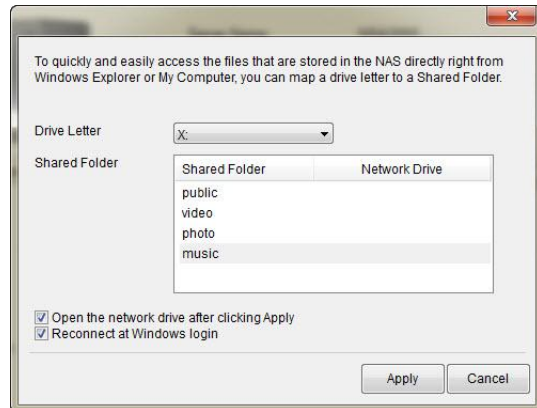


Figure 25. You are able to select that NSA has shared public folder for directly on the PC.

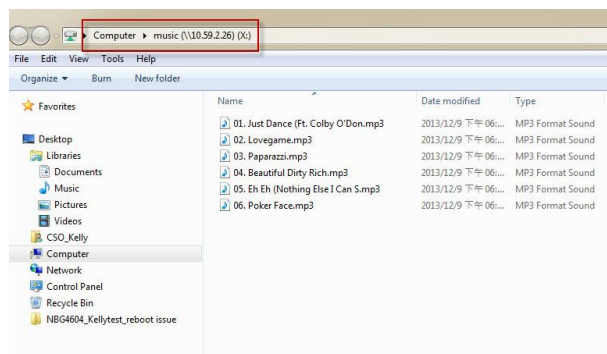


Figure 26. Directory of NSA320S.

1.6 Device Management

Click **Configuration > Administrator** and enter the admin's username and password to access the NSA320S's GUI. Then the administrator can manage the device and change the configurations.



Figure 27. NSU main menu.



Figure 28. Enter admin's username and password to login to the GUI.

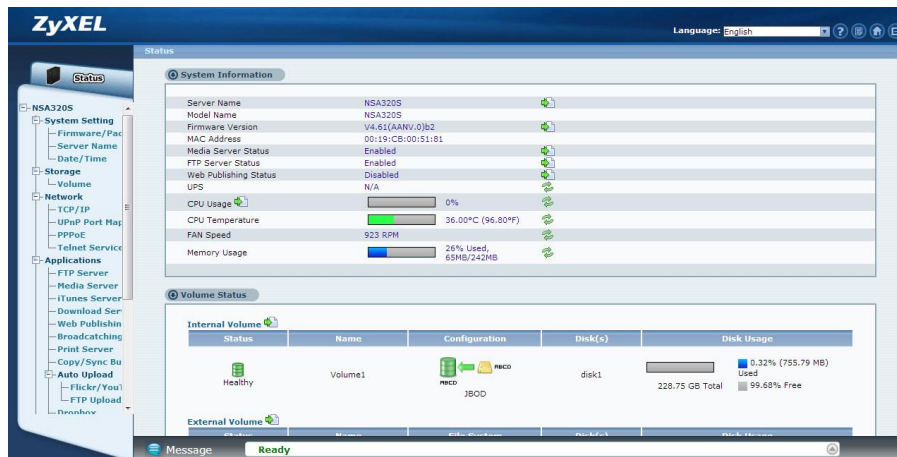


Figure 29. NSA320S's GUI

1.7 Media Player

Click **Media Player** to enjoy the music, videos, and photos through the web browser.



Figure 30. NSU main menu.



Figure 31. Enter the username and password. The username can be admin or other regular users.

The Home screen displays. You can click on the icon to listen to the music, watch the movies, or enjoy the photos stored in the NSA320S.

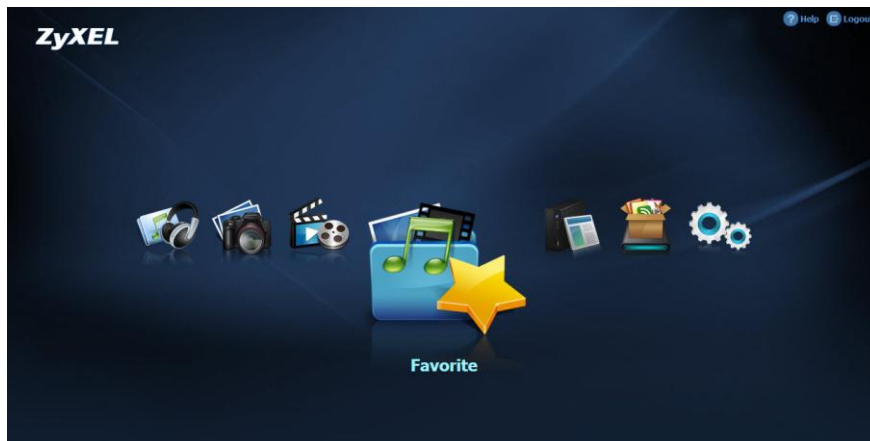


Figure 32. NSA320S Home Screen.
You can select one category in the list to play the music.

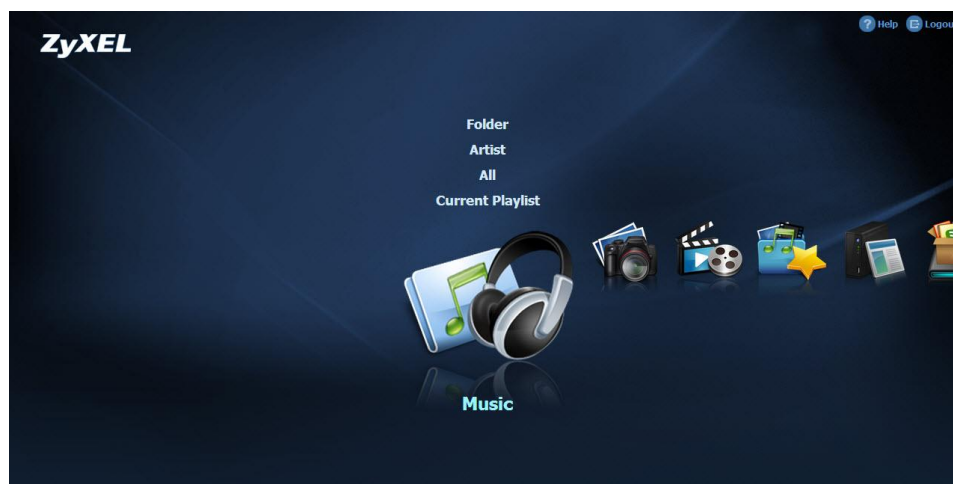


Figure 33. Play the music by selecting the category.

Just click on the song to start playing the music.



Figure 34. Music folder.

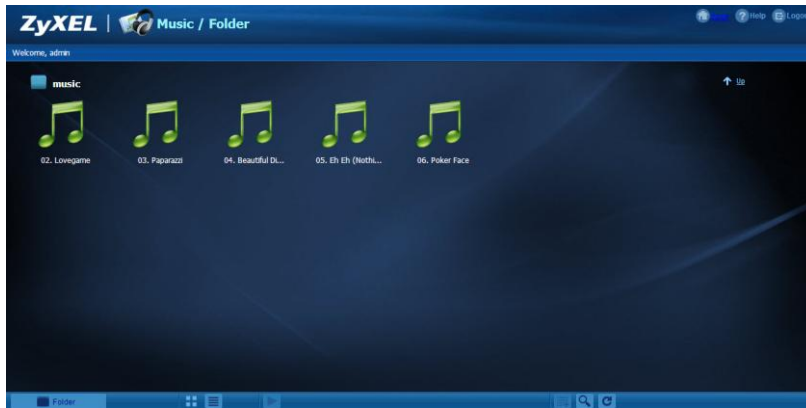


Figure 35. *Music files.*

If you find that the media files are not displayed correctly, please check the status in **Applications > Media Server**. Usually, you will see the photos displayed.

2. Auto-upload Service

ZyXEL NSA320S allows users to automatically upload their pictures to the Flickr website (<http://www.Flickr.com>) and video files to the YouTube website (<http://www.youtube.com>). Additionally, automatic FTP uploading is supported in the NSA320S. To use this feature, you need to download the same package as the NSA210's.

2.1 Auto-upload Pictures to Flickr

To share pictures on the Flickr website (http://www.Flickr.com), the NSA320S supports automatic uploading of pictures from a given folder of the NSA320S.

Configuration Procedure:

- Enable auto-upload in Flickr service.
- Configure the account Flickr account information.
- Link your NSA320S with your Flickr account.
- Specify the folders which you want NSA320S to automatically upload your pictures.
- Specify the grace period and other options in the auto-upload function.
- Move pictures to the folders you specified in the previous step.
- Check the result in the Flickr website.
- Check the system log in the NSA320S.

First, log into the web GUI page in NSA320S, go to **Auto Upload > Flickr/YouTube**. Then, enable Flickr service as shown below. After enabling the Flickr service, you will see two more icons on the same page.

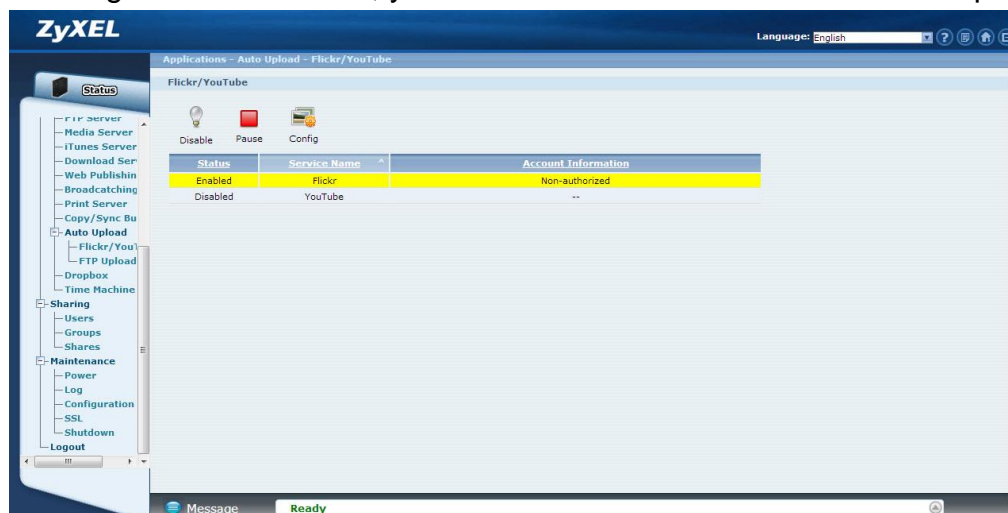


Figure 36. Enable Flickr service.

Click on the “config” icon to set a more detailed configuration. There will be several system Notifications to warn you that you are going to link to the Flickr website. Meanwhile, please make sure that you have the Flickr account information.

After configuring the account information, the system will inform you about the connection to Flickr.

In the following pop-up browser, you need to authorize the connection between your account and your NSA320S.

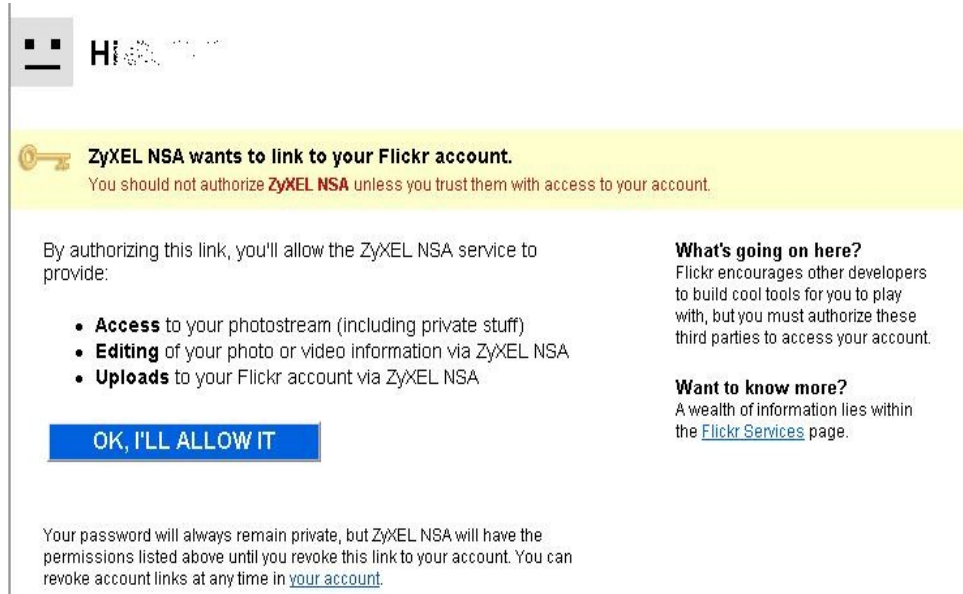


Figure 37. Authorization between your account and NSA320S.

The following figure shows that you can agree to this link after clicking on “OK” button.

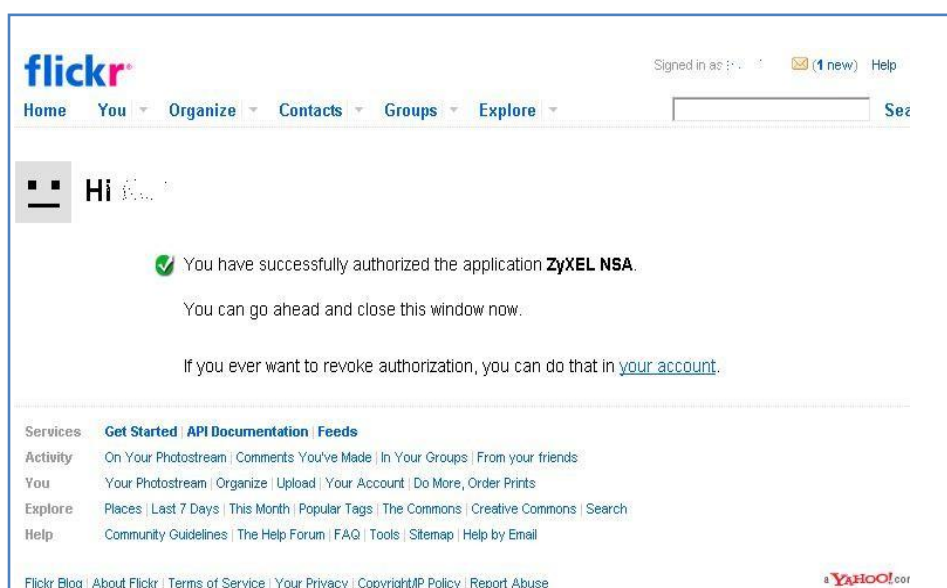


Figure 38. Successful authorization.

After allowing the agreement in the Flickr page, please also click on the “Get ready” button in the NSA320S.

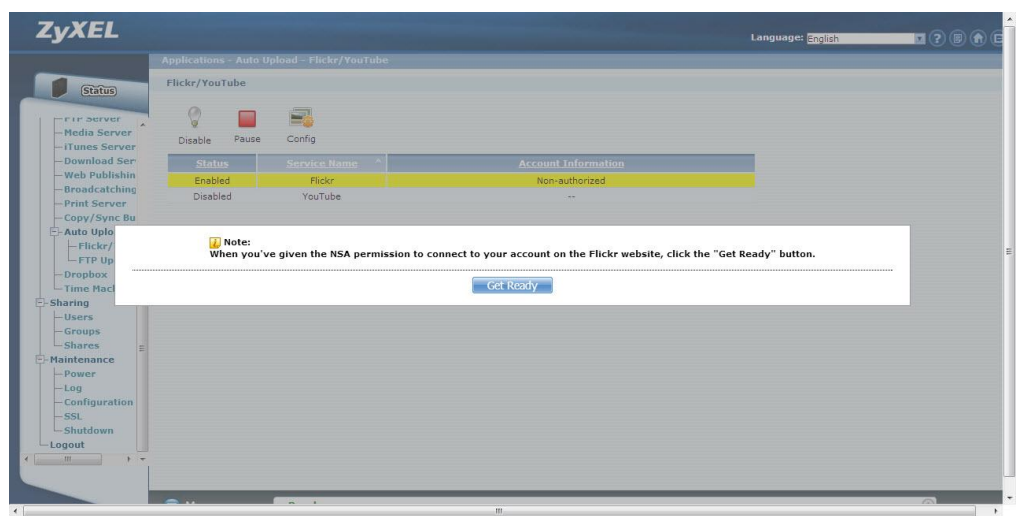


Figure 39. Click on “Get Ready”.

You can check the service status in the NSA320S under **Auto Upload > Flickr/YouTube**.

In this case, we can see the storage status in your Flickr account.

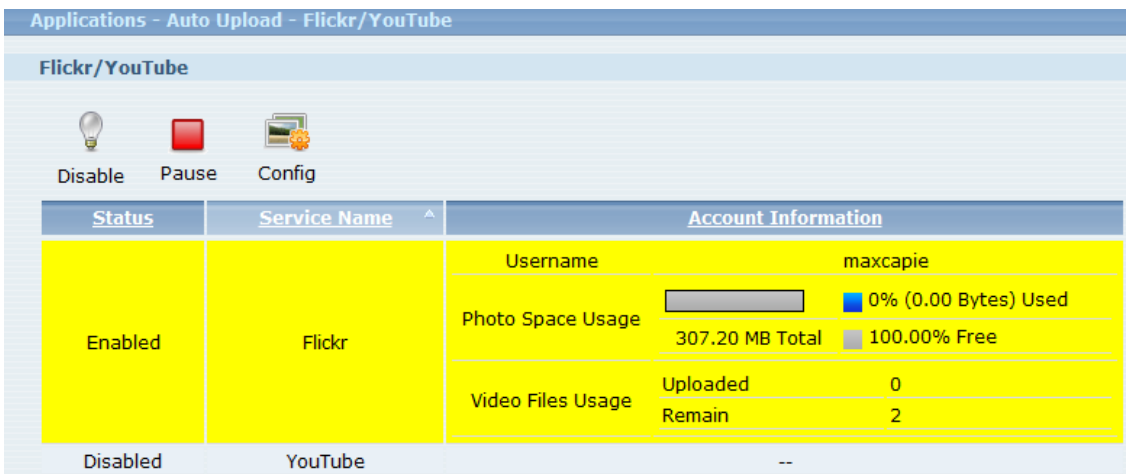


Figure 40. Monitor the service status.

Afterwards, users need to set which folder(s) of the NSA320S will be monitored and uploaded to the Flickr website. In this example, we are going to set the folder named as “” under the public folder to be monitored and upload all the pictures to the Flickr website.

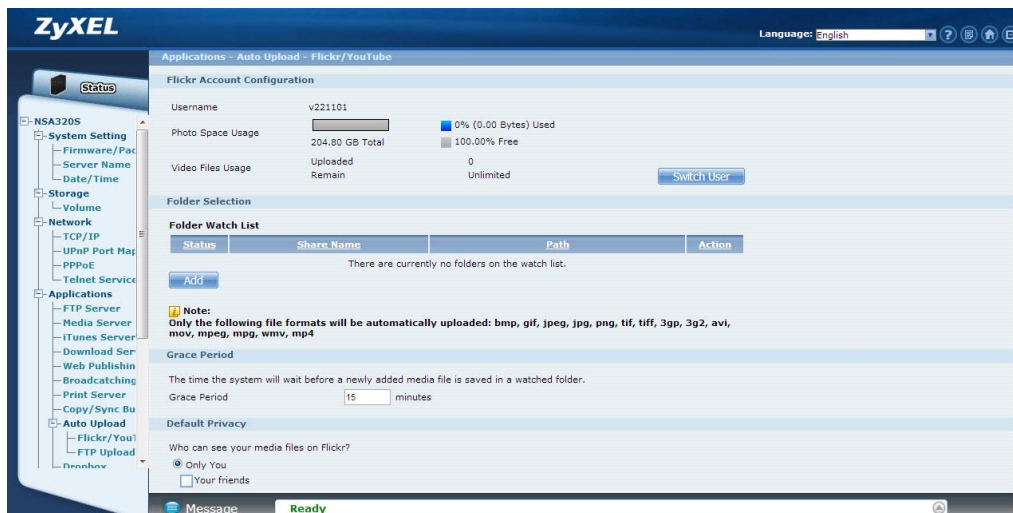


Figure 41. Configure “Grace Period” in the GUI.

In this example, we have configured the grace period as two minutes. This means that the NSA320S will upload any newly added pictures from the folder that you specified after 15 minutes from when you clicked on the “Apply” button.

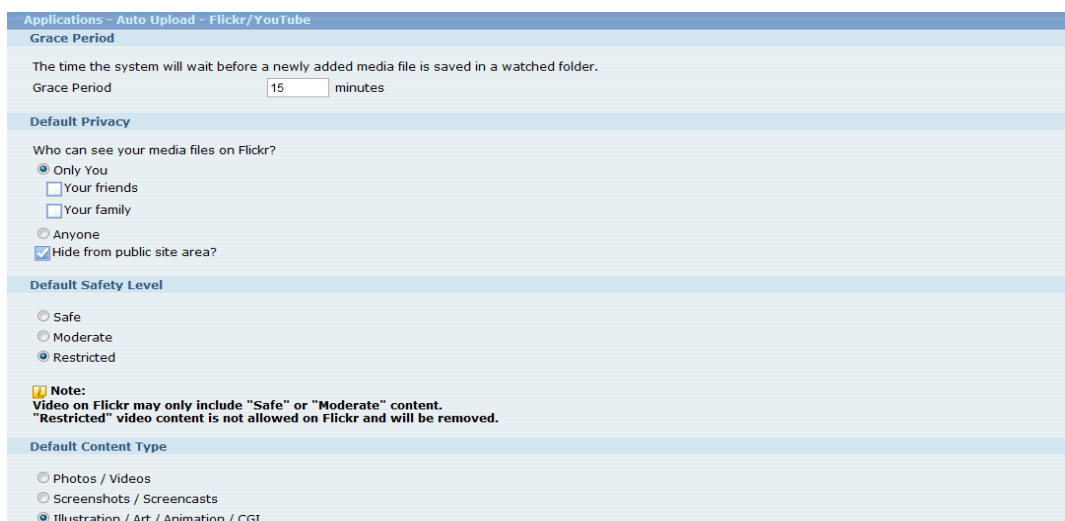


Figure 42. Configure “Grace Period” in the GUI.

Please specify the given folder that the NSA320S will monitor and upload the pictures after applying the configuration.

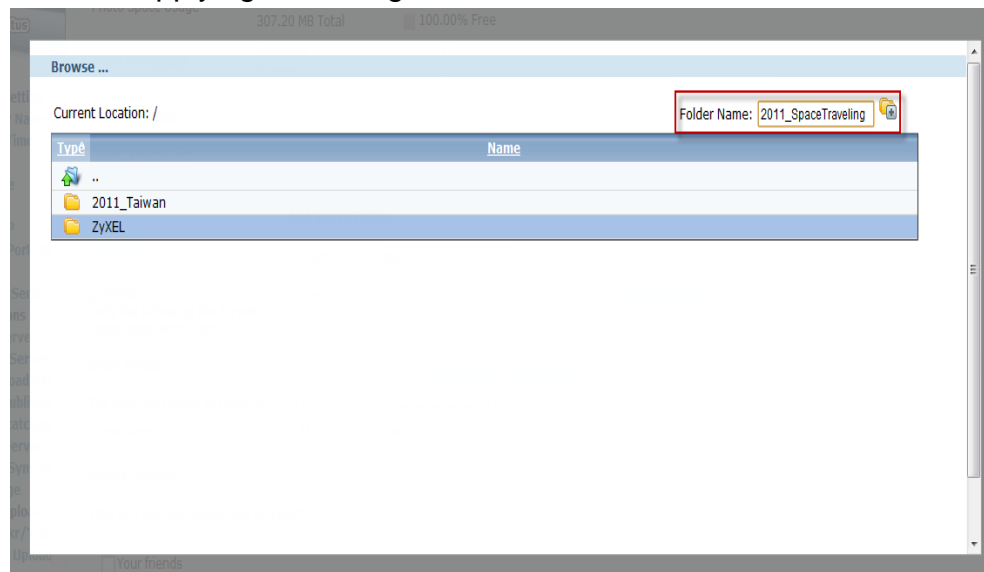


Figure 43. Specify the folder.

Please remember to click on the “Apply” button after specifying the given folder. The NSA320S will monitor any need added pictures in the folder you assigned after you have clicked on the “Apply” button.

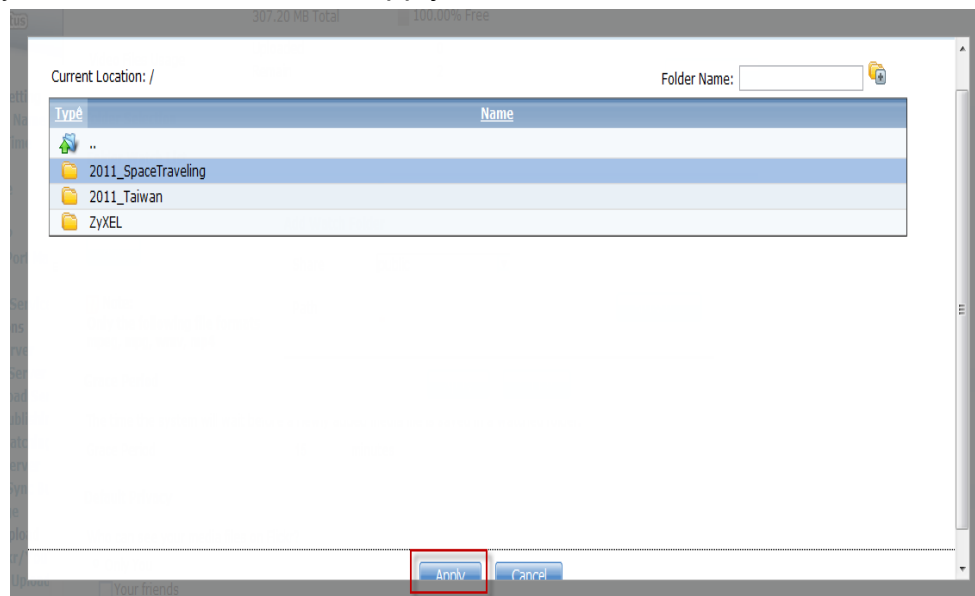


Figure 44. Click on “Apply” after specifying the folder.

After 15 minutes, the NSA320S will upload the newly added photos to the Flickr website. In this example, we can see that one picture has been uploaded.

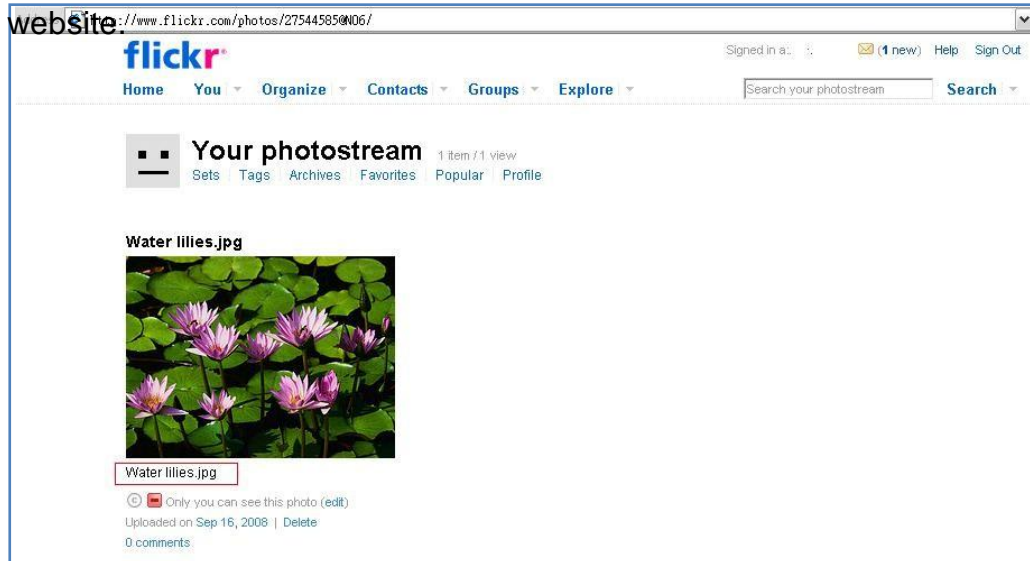


Figure 45. *Uploaded photo.*

3. Package Management

Package management is used to set up more useful applications in the NSA320S. This feature enables users to use the following applications: BackupPlanner, DyDNS, Gallery, NFS, PHP-MySQL-phpMyAdmin, SMART, SqueezeCenter, Wordpress and eMule.

Click **System Setting** > **Firmware/Packages** to display the screen. Then the applications are will be listed as shown below.

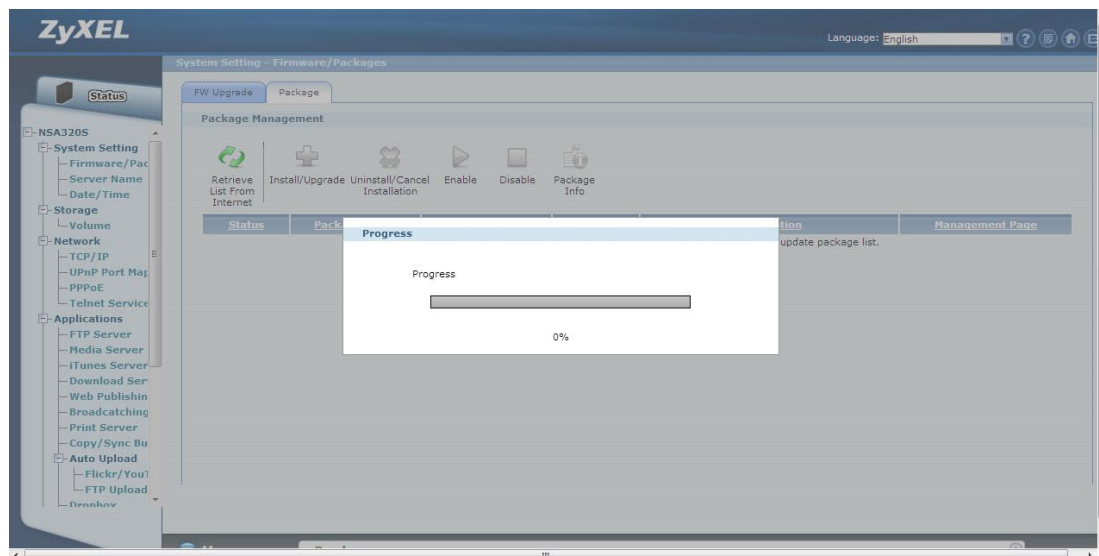


Figure 46.

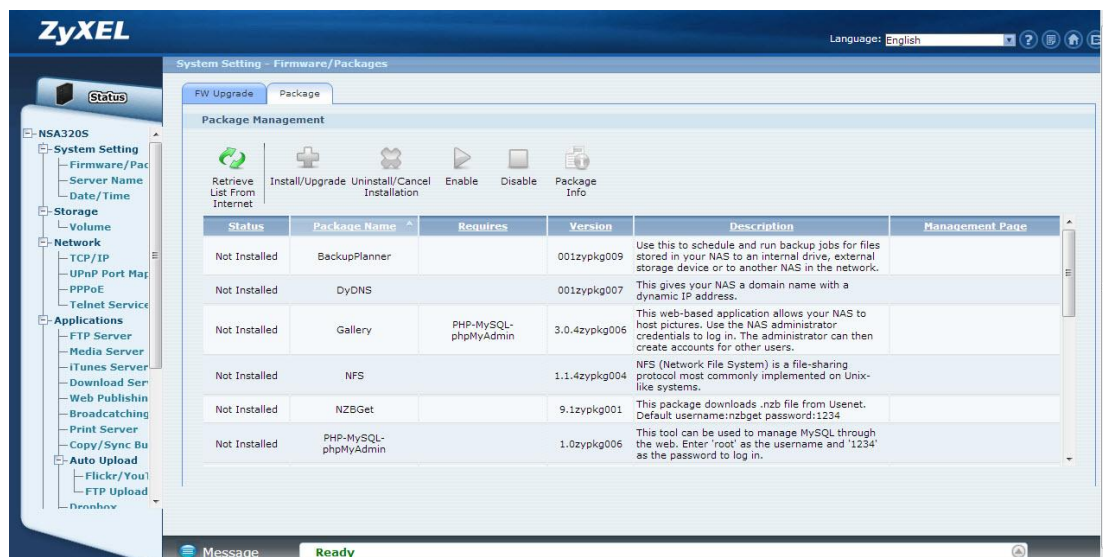


Figure 47. System setting - Firmware/Packages

After you have finished installing an application and enabling it, additional links are displayed in the navigation panel. For example, you can see BackupPlanner, Gallery, PHP-MySQL.

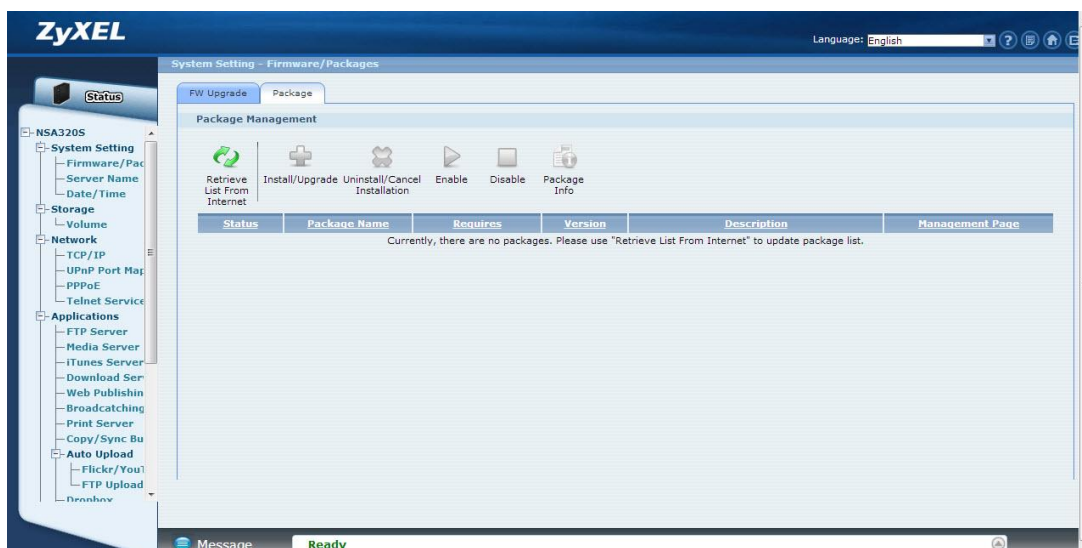


Figure 48. Original navigation panel before applications installed.

For Gallery, PHP-MySQL-phpMyAdmin, SqueezeCenter and Wordpress, you can access the applications' web configurators through the Package Management screen or by specifying the IP address shown in the GUI in your web browser.

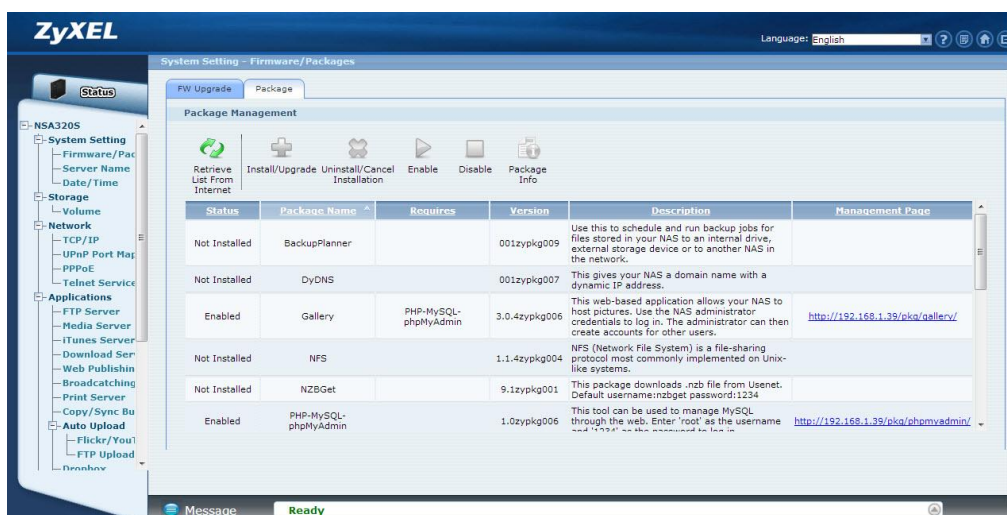


Figure 49. Applications' link.

3.1 Gallery

Gallery is a web-based application that allows the NSA320S to host photos. You can upload photos from the local computers or stored in the NSA320S. Use the administrator account of the NSA320S to login to the Gallery GUI.

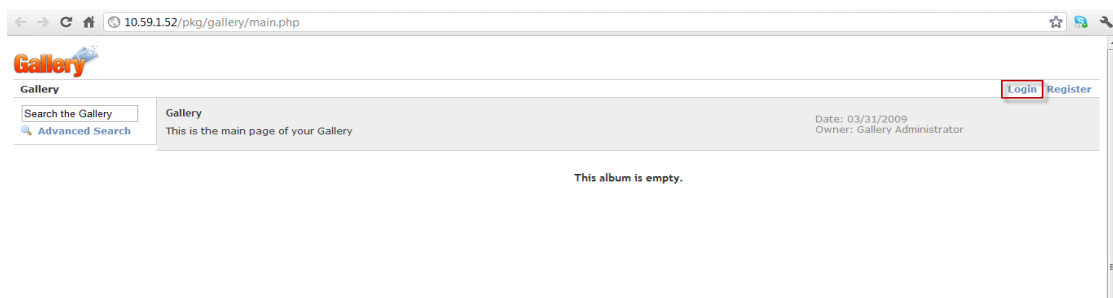


Figure 50. Enter Gallery GUI.

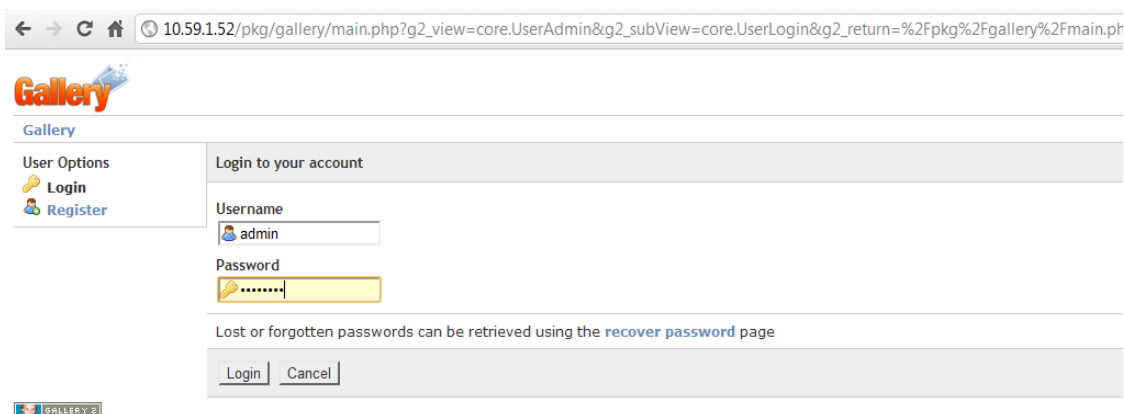


Figure 51. Use Admin account to login.

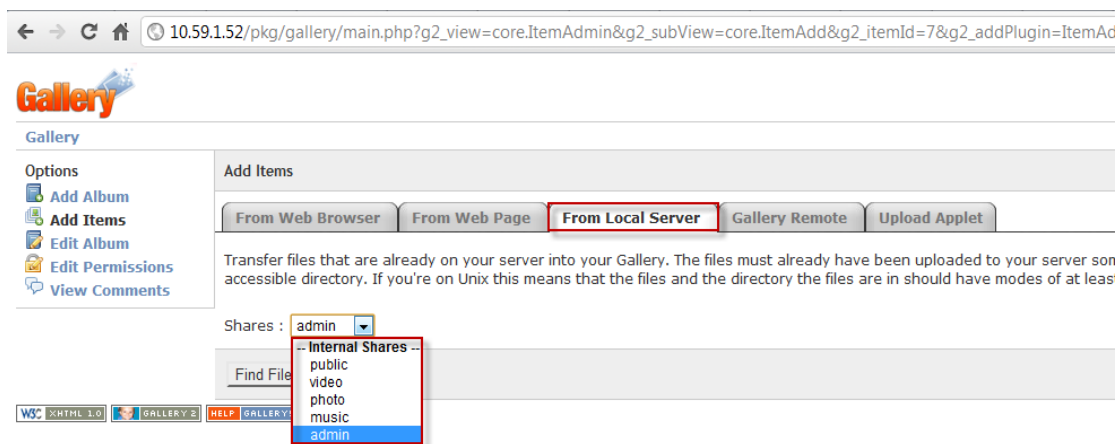


Figure 52. Upload photos from NSA320S.

Edit Album
Edit Permissions
View Comments

Transfer files that are already on your server into your Gallery. The files must already h and must be placed in an accessible directory. If you're on Unix this means that the file least 755.

Directory: /photo

File name	Type	Size	Use Symlink
<input checked="" type="checkbox"/> IMG_0063.JPG	Photo	5961162 bytes	<input type="checkbox"/>
<input checked="" type="checkbox"/> IMG_0066.JPG	Photo	5904765 bytes	<input type="checkbox"/>
<input checked="" type="checkbox"/> IMG_0069.JPG	Photo	5919973 bytes	<input type="checkbox"/>
<input type="checkbox"/> IMG_0086.JPG	Photo	5737059 bytes	<input type="checkbox"/>
<input type="checkbox"/> IMG_0087.JPG	Photo	6099382 bytes	<input type="checkbox"/>
<input type="checkbox"/> (Un)check all known types	(Un)check symlinks for selected items		<input type="checkbox"/>

Copy base filenames to:
☒ Title ☐ Summary ☐ Description

Thumbnails

Gallery can create thumbnails at upload time, or create them the first time you want to thumbnail once and save it, but if you create them at upload time it makes viewing albu upload time.

☒ Create thumbnails now

Figure 53. Add selected files.

Then you can view the uploaded photos and edit photos in the screen.

Address <http://10.59.1.75/pkg/gallery/main.php>

Site Admin Your Account

Search the Gallery
Advanced Search

Add Album
Add Comment
Add Items
Delete Items
Edit Album
Edit Captions
Edit Permissions
Rearrange Items
View Latest Comments
View Slideshow

Gallery
This is the main page of your Gallery

Date: 03/31/2009
Owner: Gallery Administrator
Size: 2 items

< item actions >

IMG_0063

Date: 08/04/2009

< item actions >

IMG_0066

Date: 08/04/2009
Views: 1

Page: 1

Figure 54. Uploaded photos.

4. Dropbox

Dropbox provides a files backup service. You create an account for Dropbox (<https://www.dropbox.com>), Dropbox will give you 2GB of storage for your files backup. The NSA320S will automatically download the files from the Dropbox server.

Configuration Procedure:

- Enter the username and password
- Enable Dropbox service.
- Configure the Dropbox account information.
- Link your NSA320S with your Dropbox account.

On the NSU main page, login to the Dropbox service for NSA320S, go to **Applications > Dropbox**. Then, enable the Dropbox service.



Figure 55 NSU main menu.



Figure 56. Enter the username and password.

After you enable the Dropbox service, the browser is going to link to the Dropbox website. Meanwhile, please make sure that you have the Dropbox account information. After configuring the account information, the system will notify you about the connection to Dropbox. In the following popup browser, you need to authorize the connection between your account and your NSA320S.

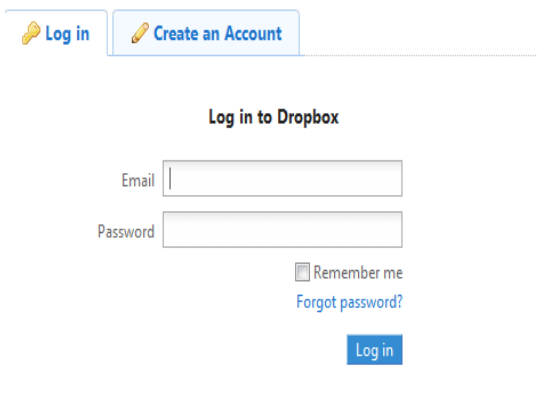


Figure 57. Login to Dropbox.

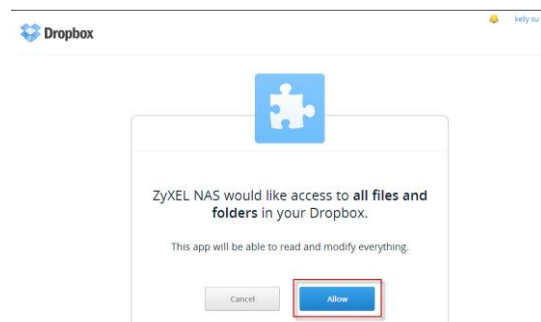


Figure 58. Authorization between your account and NSA320S.

After allowing the agreement in the Dropbox page, please also click on the “Get ready” button in the NSA320S.

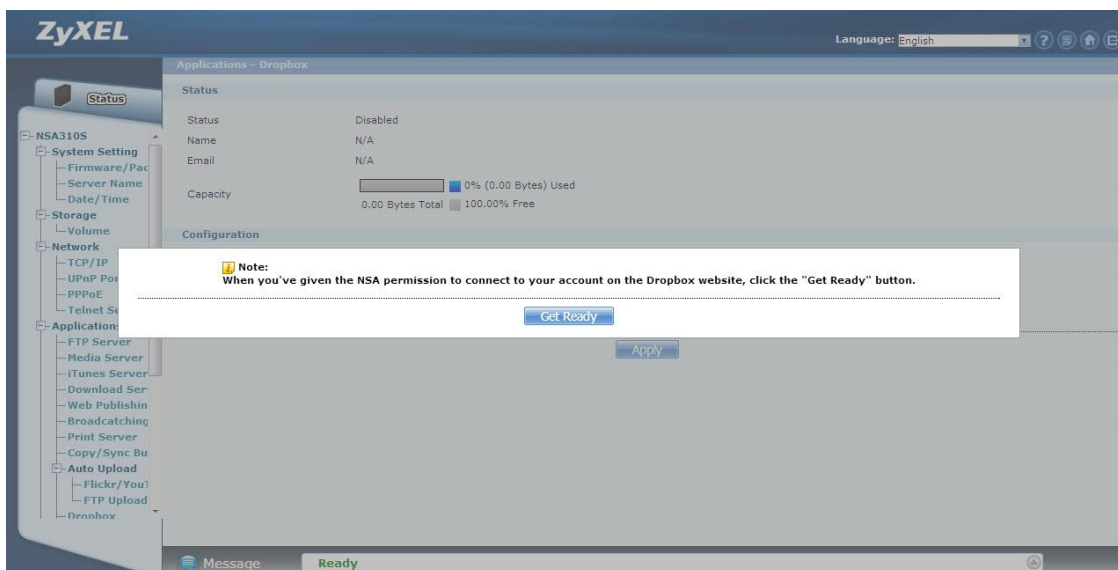


Figure 59. Click on “Get Ready”.

You can check the service status in the NSA320S under **Applications > Dropbox**. In this case, we can see the storage status in your Dropbox account.

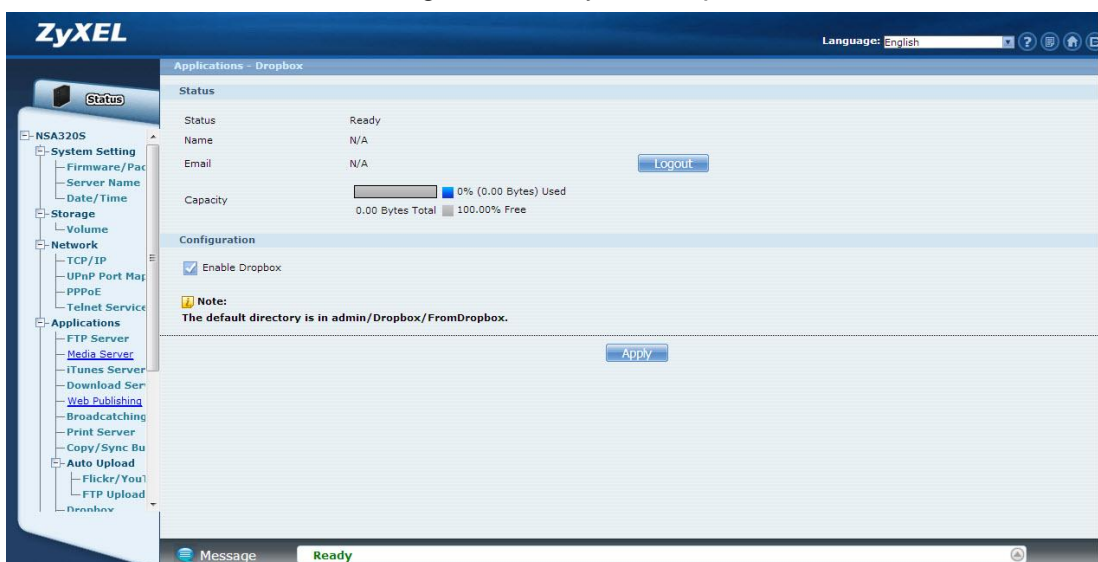


Figure 60. Monitor the service status.

The NSA connects to Dropbox and copies files in the Drop2NAS folder to the NSA's admin\Dropbox\FromDropbox folder, and then empties the Drop2NAS folder. The NSA initiates connections to the Dropbox server so you do not need to configure rules on a firewall in front of the NSA to allow access to the NSA. When your PC has installed Dropbox, you can upload files to the Drop2NAS folder, and then NSA will get files from the Dropbox server.

Note: Do not delete the NAS token file as it is needed for your NSA to work with the Dropbox Account.

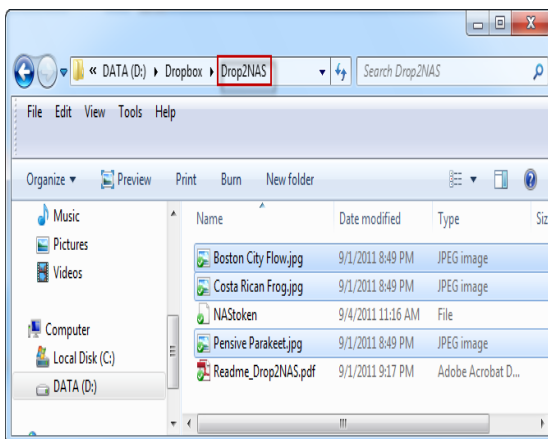


Figure 61. Upload files to folder.

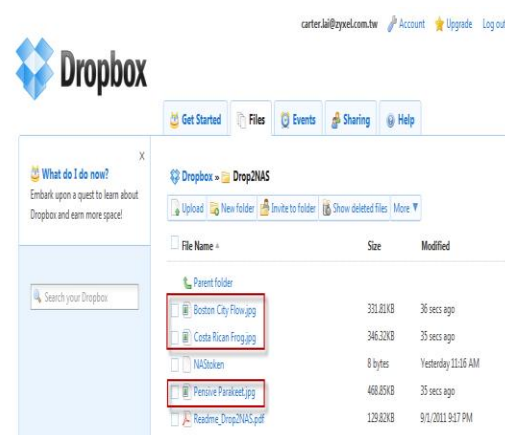


Figure 62. Check files from website.

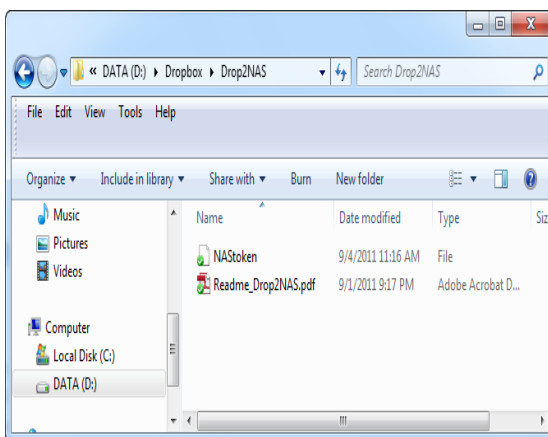


Figure 63. NSA get files from Dropbox server.

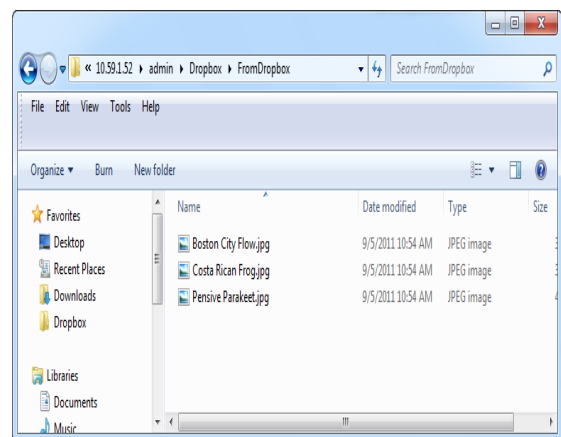


Figure 64. Check files on NSA.

4.1 Using the zDownload Folder

The NSA copies *.torrent files in the zDownload folder to the NSA's admin\download\torrents folder and automatically starts download them.

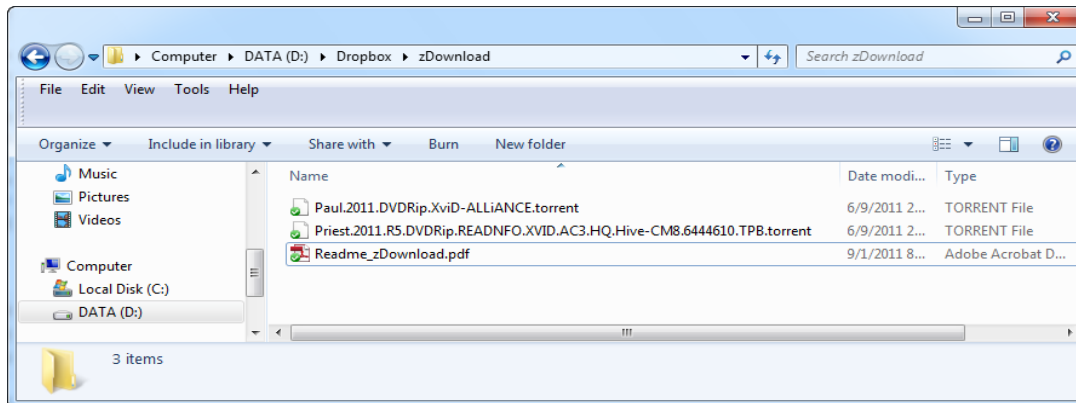


Figure 65. Upload torrent files to zDownload folder.

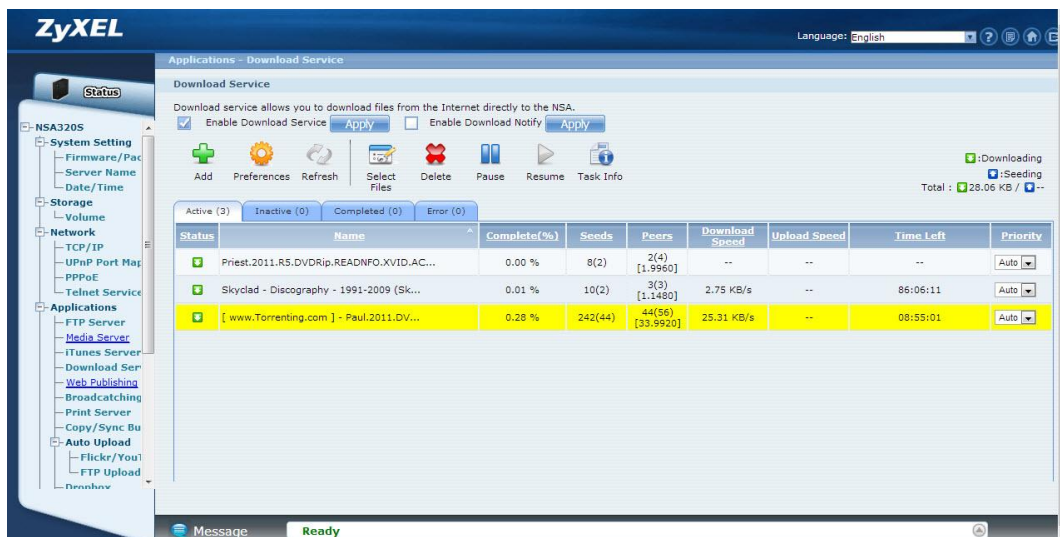


Figure 66. NSA get files and download automatically.

5. Smartphone APP

Use ZyXEL's zMedia app to play files and manage the NSA from iOS version 3 or later device or Android version 2.1 or later smartphone.

Install ZyXEL's zMedia app from the Apple App Store, Android Market, or www.zyxel.com to play files and manage the NSA from your iOS device or Android smartphone.

Login to zMedia

1. Click on the zMedia icon to open the app and automatically search for NSAs on your network.



Figure 67. zMedia App Icon.

2. Select an NSA if you have more than one.

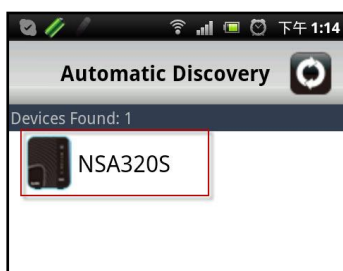


Figure 68 zMedia Automatic Discovery.

3. Use the admin username and password to login.

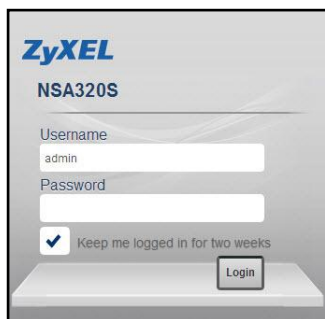
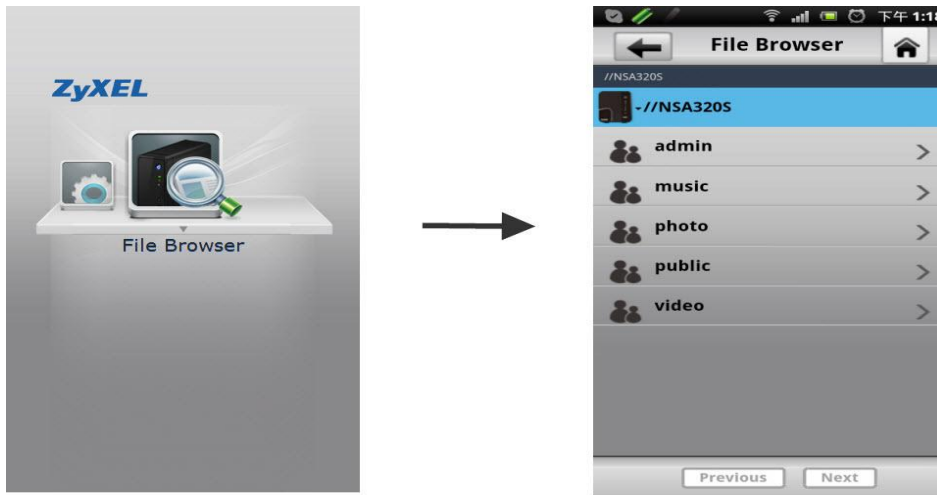


Figure 69. zMedia Login.

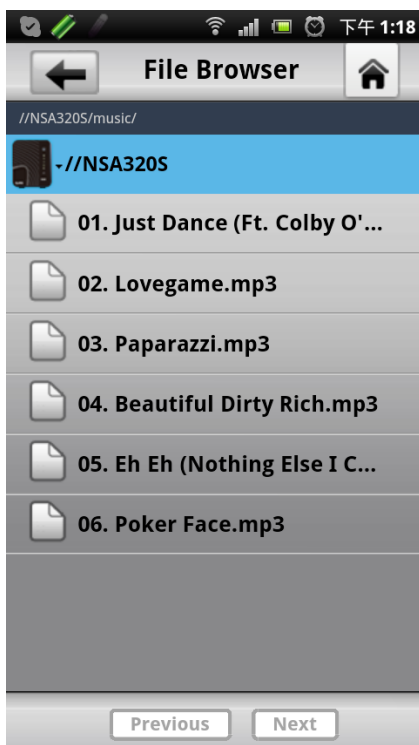
5.1 File Browser

Click on the **File Browser** to look through and play files on the NSA.

Figure 70. zMedia File Browser



Click on a share to view its contents.



Network

IPv6

The NSA320S supports IPv6 (Internet Protocol version 6), designed to increase IP address space and enhance features. You can click **Network > TCP/IP** for further configuration.

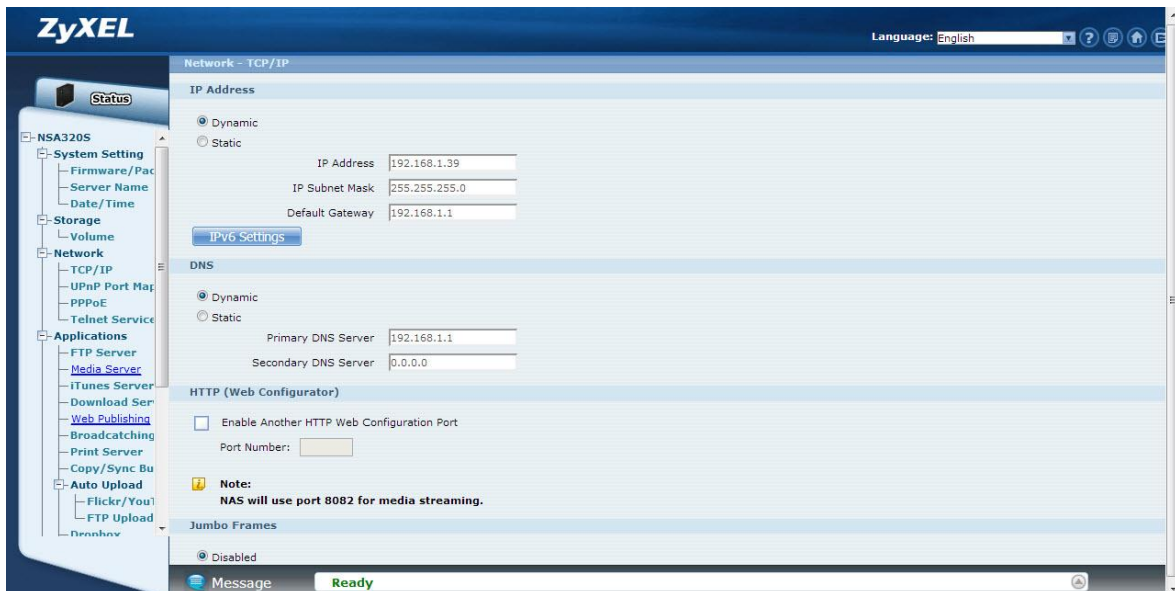


Figure 71. Click IPv6 Settings.

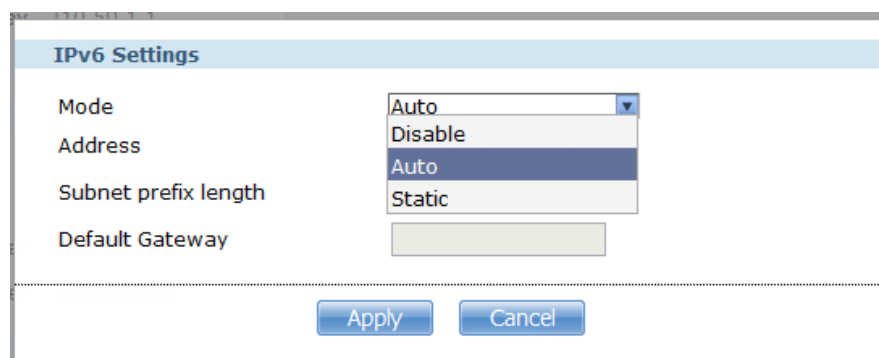


Figure 72. You can select Disable / Auto / Static.

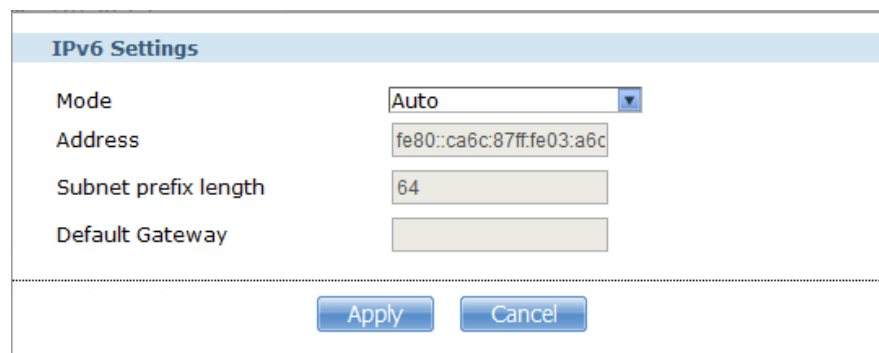


Figure 73. Auto will get IPv6 IP address automatically.

7 Access NSA320S via Samba on Linux

To see which shares are available on a given host, run:

```
# smbclient -L //[IP|hostname]
```

The output of this command should look something like this:

```
[root@localhost ~]# smbclient -L //192.168.104.6
Password:
Domain=[NSA325] OS=[Unix] Server=[Samba 3.5.6]

      Sharename      Type      Comment
      -----
      IPC$           IPC       IPC Service (NSA325)
      DISK_210       Disk
      admin          Disk
      music          Disk
      photo          Disk
      video          Disk
      public         Disk
Domain=[NSA325] OS=[Unix] Server=[Samba 3.5.6]

      Server          Comment
      -----
      Workgroup        Master
      -----
      WORKGROUP        NSA325
[root@localhost ~]# _
```

Figure 74

To check the amount of disk space for each mount:

```
# df
```

```
[root@localhost ~]# df
Filesystem            1K-blocks      Used Available Use% Mounted on
/dev/mapper/VolGroup00-LogVol00
18156292    2806460    14412668   17% /
/dev/sda1             101086      12239      83628   13% /boot
tmpfs                 517552         0      517552    0% /dev/shm
[root@localhost ~]# _
```

Figure 75

To mount samba via cifs, run:

```
# mount -t cifs -o username="Username",password="Password" //[IP/share] /mnt/smb
```

```
umount /mnt/smb
```

```
[root@localhost smb]# mount -t cifs -o username="admin",password="1234" //192.16
8.104.6/music /mnt/smb
```

Figure 76

To check the amount of disk space for each mount:

df

```
[root@localhost ~]# df
Filesystem            1K-blocks      Used Available Use% Mounted on
/dev/mapper/VolGroup00-LogVol00
18156292      2886468    14412668   17% /
/dev/sda1              101086       12239      83628    13% /boot
tmpfs                  517552         0      517552     0% /dev/shm
//192.168.104.6/music  243562872  97041188  146521684   40% /mnt/smb
[root@localhost ~]# _
```

Figure 77

8. Login to NSA320S via FTP on Linux

8.1 login to the NSA320S via anonymous FTP on Linux.

Enable Anonymous FTP Access option in the GUI.

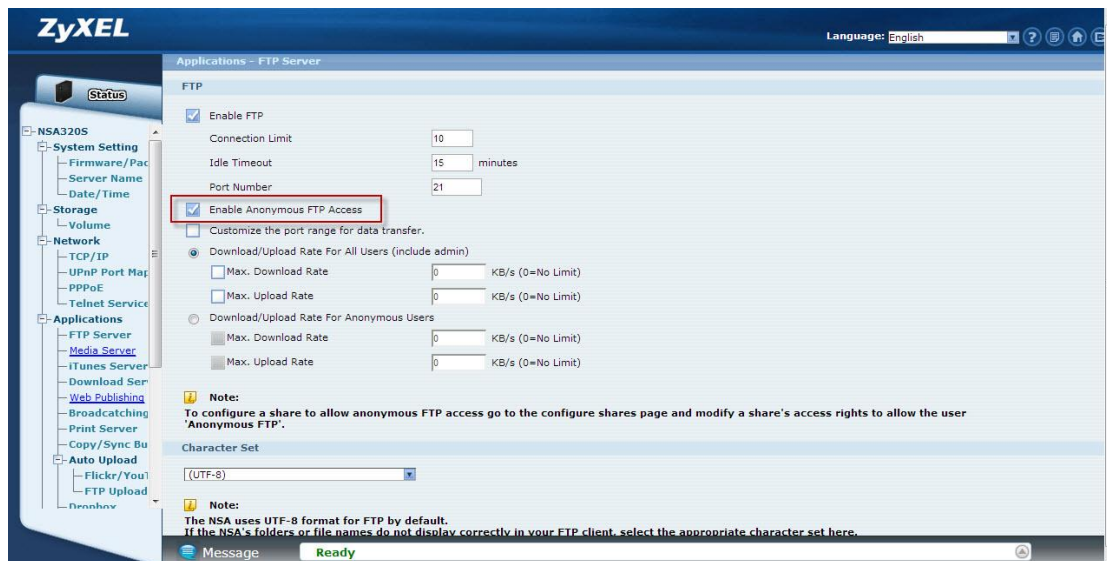


Figure 78

Access NSA320S with anonymous via FTP, run:

```
# lftp [-p port] [-u user[,pass]] [host|IP]
```

```
[root@localhost ~]# lftp 192.168.104.6
lftp 192.168.104.6:~> dir
drwxrwxrwx  6 0      0      0 May  2 18:04 .
drwxrwxrwx  6 0      0      0 May  2 18:04 ..
drwxrwxrwx  7 0      0      0 May  2 17:31 music
drwxrwxrwx  2 0      0      0 Apr  2 15:25 photo
drwxrwxrwx  8 0      0      0 May  2 17:16 public
drwxrwxrwx  6 0      0      0 Apr 30 19:08 video
lftp 192.168.104.6:~/> _
```

Figure 79

8.2 Access NSA320S using a username via FTP, run:

```
# ftp [host|IP] [port]
```

```
[root@localhost ~]# ftp 192.168.104.6 21
Connected to 192.168.104.6.
220----- Welcome to Pure-FTPd [TLS] -----
220-You are user number 1 of 10 allowed.
220-Local time is now 17:19. Server port: 21.
220-This is a private system - No anonymous login
220-IPv6 connections are also welcome on this server.
220 You will be disconnected after 15 minutes of inactivity.
500 This security scheme is not implemented
500 This security scheme is not implemented
KERBEROS_V4 rejected as an authentication type
Name (192.168.104.6:root): admin
331 User admin OK. Password required
Password:
230 OK. Current restricted directory is /
Remote system type is UNIX.
Using binary mode to transfer files.
ftp> _
```

Figure 80

You can check content of the NSA320S via FTP.

```
ftp> dir
227 Entering Passive Mode (192,168,104,6,56,50)
150 Accepted data connection
drwxrwxrwx  7 0      0              0 May  2 17:20 .
drwxrwxrwx  7 0      0              0 May  2 17:20 ..
drwxrwxrwx  7 0      0              74 Apr 24 17:22 admin
drwxrwxrwx 17 0      0            4096 Apr 26 09:28 music
drwxrwxrwx  2 0      0              22 Apr  2 15:25 photo
drwxrwxrwx  8 0      0            4096 May  2 17:16 public
drwxrwxrwx  6 0      0            4096 Apr 30 19:08 video
226-Options: -a -l
226 7 matches total
ftp> _
```

Figure 81

Get file from NSA320S, run:

get filename

```
ftp> dir
227 Entering Passive Mode (192,168,104,6,11,112)
150 Accepted data connection
drwxrwxrwx  2 502      500          4096 May  2 17:37 .
drwxrwxrwx  7 0        0           152 May  2 17:31 ..
-rwxrwxrwx  1 502      500      9521481 Feb 18 2011 01. Pyramid (Feat. Iyaz)
.mp3
-rwxrwxrwx  1 502      500      10567836 Oct 30 2010 02. Reset.mp3
-rwxrwxrwx  1 502      500      8706880 Oct 30 2010 03. In This Song.mp3
-rwxrwxrwx  1 502      500      8810335 Oct 30 2010 04. Nobody's Singin' To
Me.mp3
-rwxrwxrwx  1 502      500      10373489 Oct 30 2010 05. Thank You.mp3
-rwxrwxrwx  1 502      500       7471808 Oct 30 2010 06. I Love You.mp3
-rwxrwxrwx  1 502      500      10054801 Oct 30 2010 07. In Love So Deep.mp3
-rwxrwxrwx  1 502      500      9927335 Oct 30 2010 08. All That I Need To S
urvive.mp3
-rwxrwxrwx  1 502      500      9341128 Oct 30 2010 09.Nothing.mp3
-rwxrwxrwx  1 502      500      8203240 Oct 30 2010 10. The Truth Is.mp3
-rwxrwxrwx  1 502      500      8998409 Oct 30 2010 11. Did It For You.mp3
-rwxrwxrwx  1 502      500      9679106 Oct 30 2010 12. Note To God.mp3
-rwxrwxrwx  1 502      500      7905447 Oct 30 2010 13. Breathe You Out.mp3
-rwxrwxrwx  1 502      500      9447712 Oct 30 2010 14. Are We Over.mp3
226-Options: -a -l
226 16 matches total
ftp> _
```

Figure 82

```
ftp> get 09.Nothing.mp3
local: 09.Nothing.mp3 remote: 09.Nothing.mp3
227 Entering Passive Mode (192,168,104,6,34,182)
150-Accepted data connection
150 9122.2 kbytes to download
226-File successfully transferred
226 2.669 seconds (measured here), 3.34 Mbytes per second
9341128 bytes received in 2.7 seconds (3.4e+03 Kbytes/s)
ftp> _
```

Figure 83

Delete file from NSA320S, run:

delete filename

```
ftp> delete 09.Nothing.mp3
250 Deleted 09.Nothing.mp3
ftp> dir
227 Entering Passive Mode (192,168,104,6,241,36)
150 Accepted data connection
drwxrwxrwx  2 501      500          6 May  2 17:58 .
drwxrwxrwx  3 502      500      4096 May  2 17:50 ..
226-Options: -a -l
226 2 matches total
ftp> _
```

Figure 84

Create folder in NSA320S, run:

mkdir foldername

```
ftp> mkdir upload
257 "upload" : The directory was successfully created
ftp> _
```

Figure 85

Remove folder from NSA320S, run:

rm foldername

```
ftp> rm upload
250 The directory was successfully removed
ftp> _
```

Figure 86

To exit NSA320S via FTP, run:

bye

```
ftp> bye
250-Goodbye. You uploaded 9123 and downloaded 0 kbytes.
250-OK. Current directory is /
250 Logout.
[root@localhost ~]# _
```

Figure 87

9. Login to NSA320S via Telnet on Linux

Enable telnet service via the GUI.

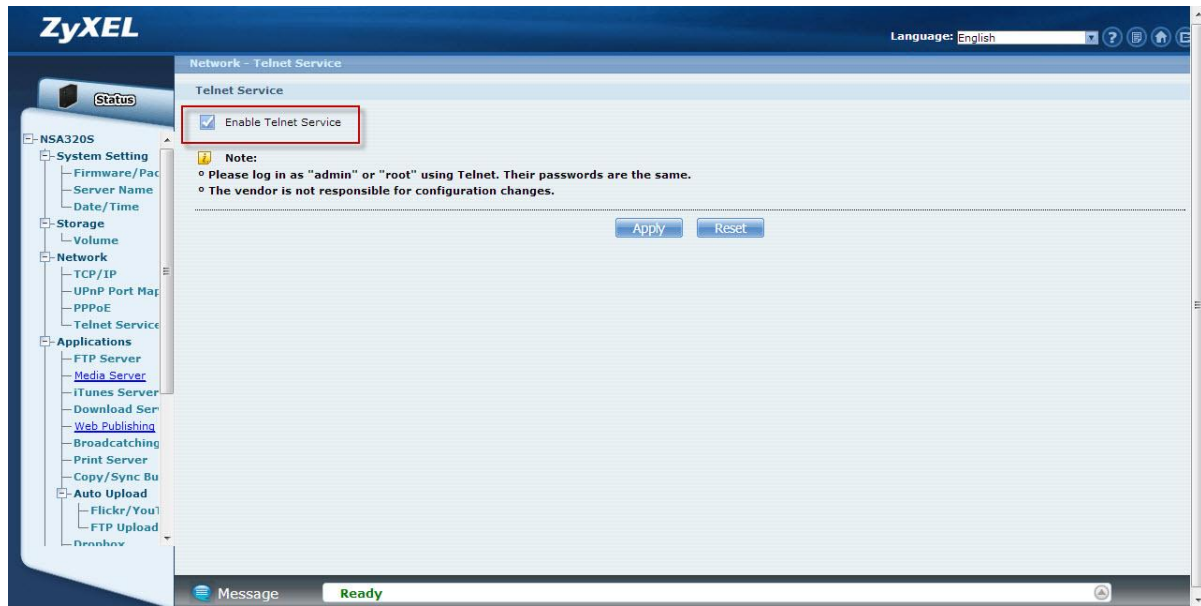


Figure 88

To access a host via telnet, run:

```
# telnet [host|IP [port]]
```

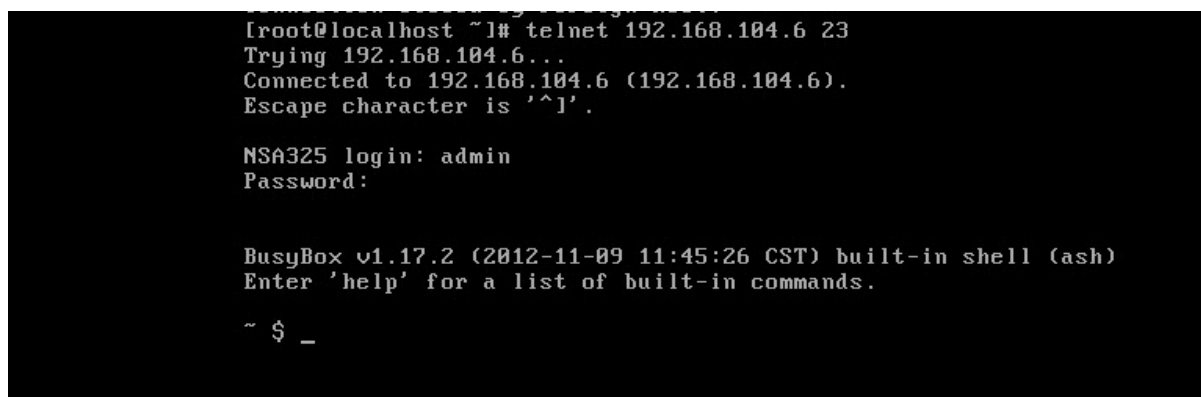



Figure 89

To exit NSA320S via telnet, run:

exit



```
~ $ exit  
Connection closed by foreign host.  
[root@localhost ~]# _
```

Figure 90

10. Access NSA320S via NFS

Install the NFS package via the GUI.

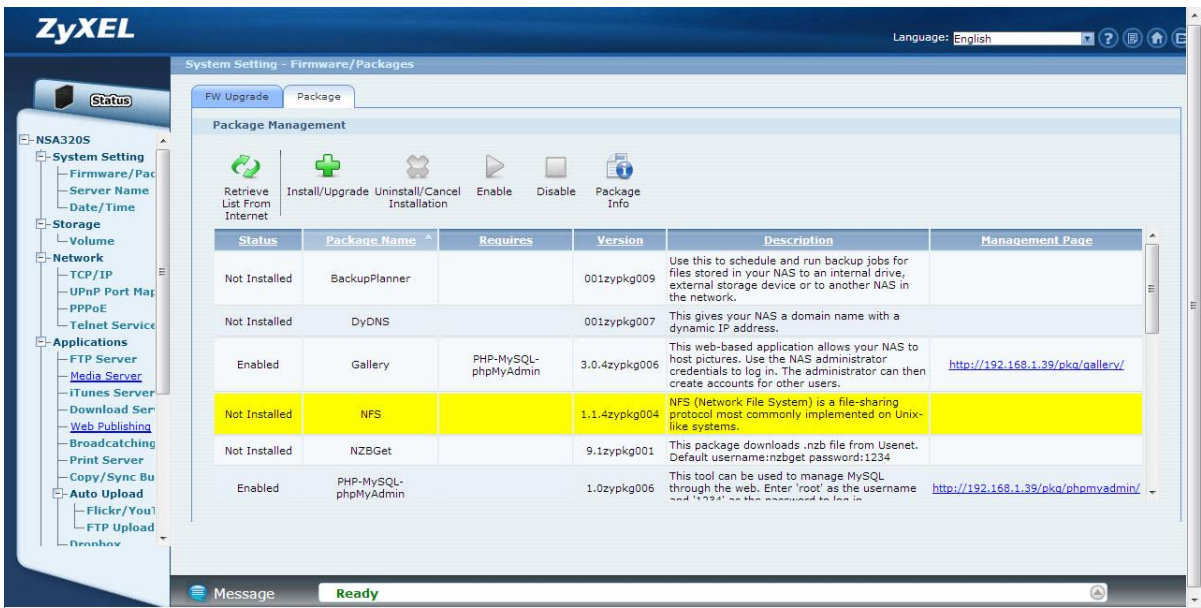


Figure 91

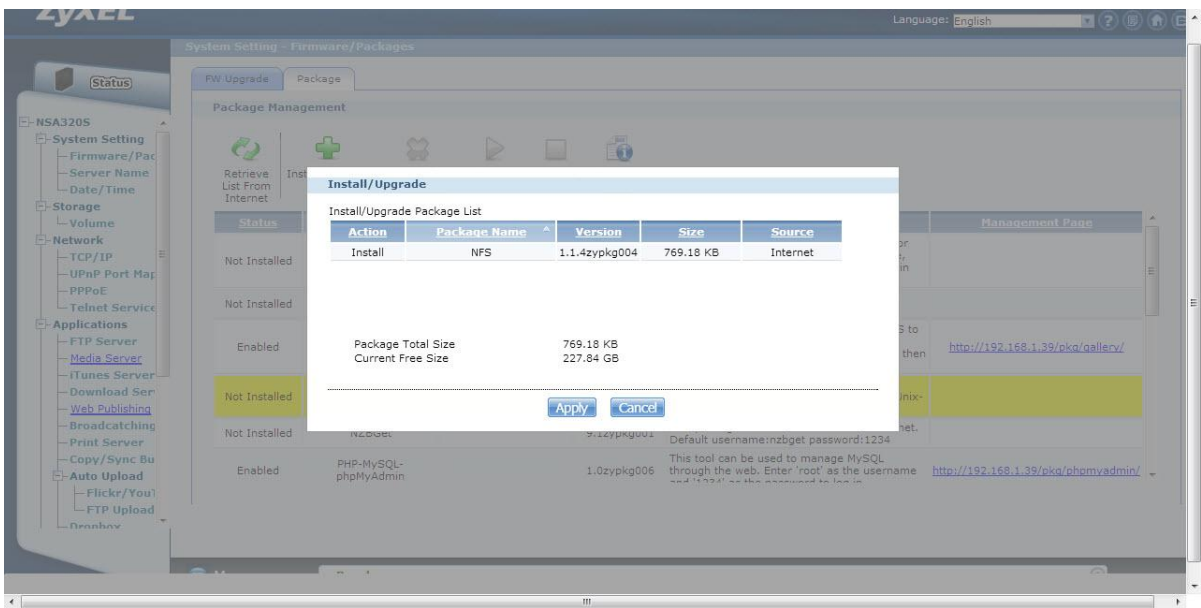


Figure 92

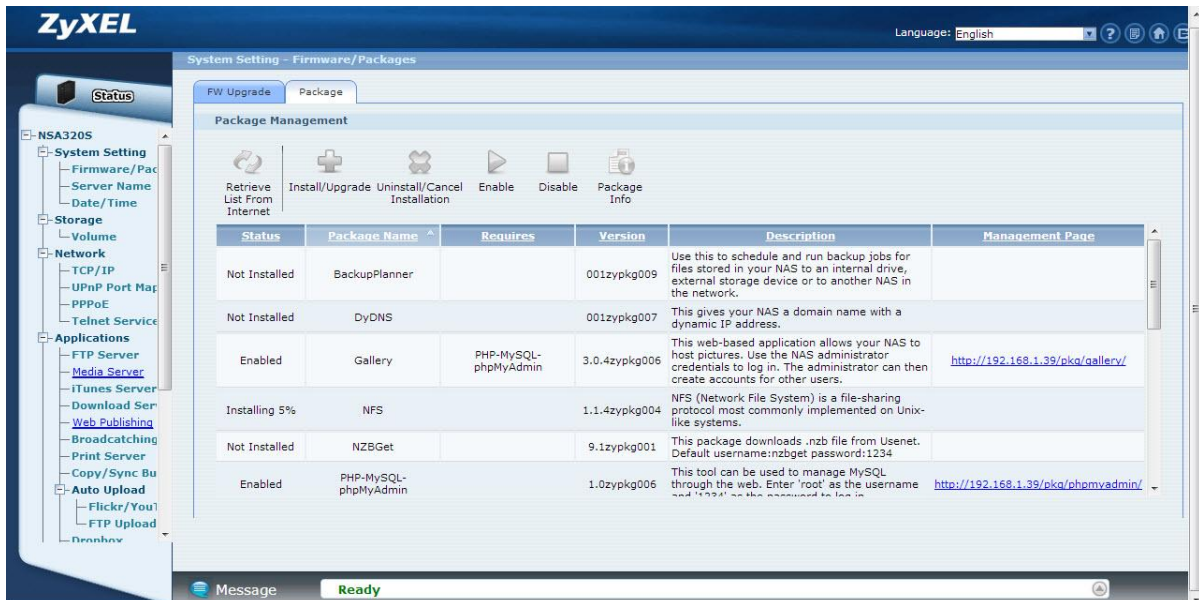


Figure 93

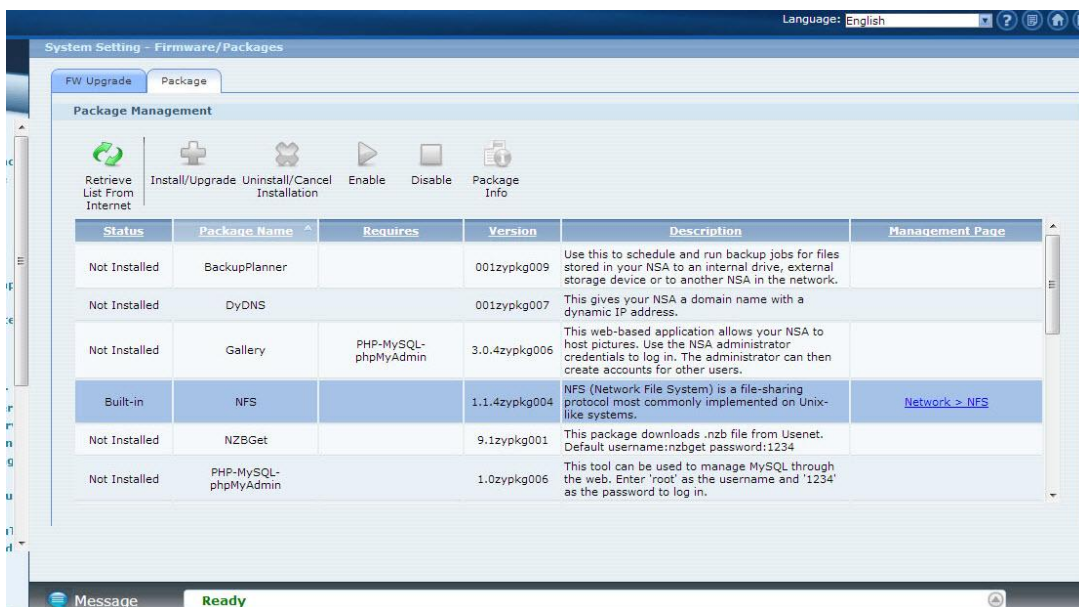


Figure 94

Add the NFS Share.

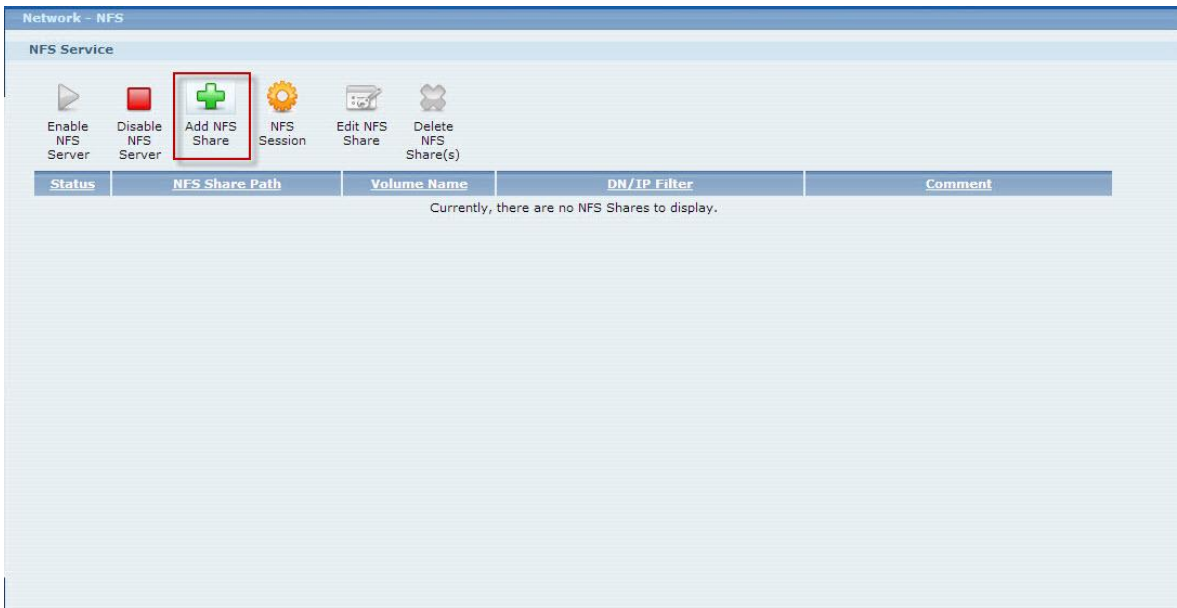


Figure 95

Edit the NFS Share.

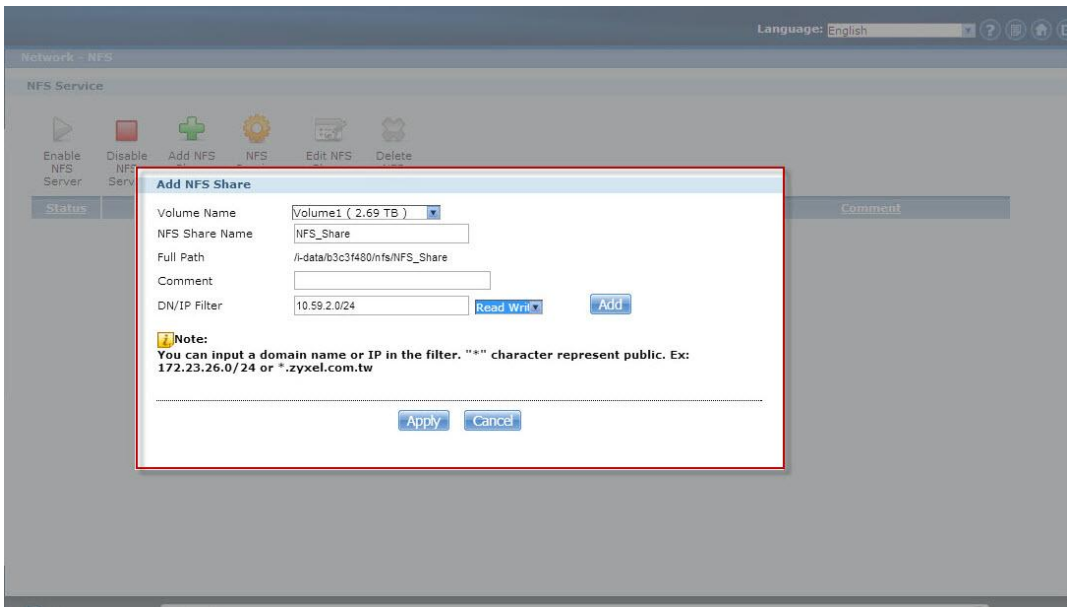


Figure 96

The NFS editing is complete.

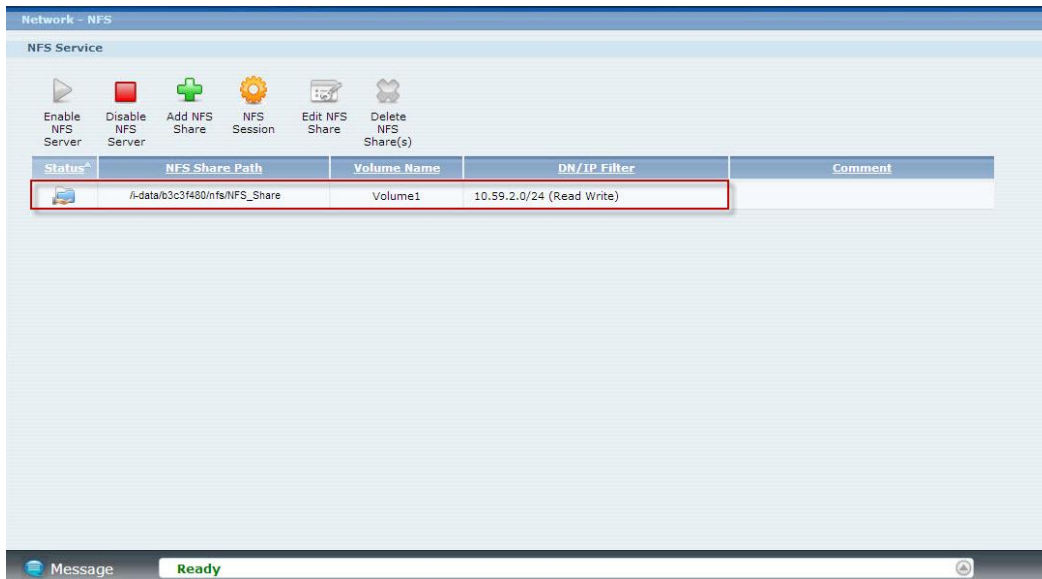


Figure 97

Enable the NFS service on Linux

```
# /etc/init.d/rpcbind start
```

```
# /etc/init.d/nfslock start
```

```
[root@dhcppc16 ~]# /etc/init.d/rpcbind start
[root@dhcppc16 ~]# /etc/init.d/nfslock start
[root@dhcppc16 ~]# _
```

Figure 98

Verify that the NFS server has exported the directory:

```
# showmount -e ServerName
```

```
[root@dhcppc16 ~]# showmount -e 10.59.2.100
Export list for 10.59.2.100:
/i-data/12494823/nfs/NFS_Share 10.59.2.0/24
[root@dhcppc16 ~]# _
```

Figure 99

Create a mount point for the remote resource using the mkdir command:

```
# mkdir -p /local/directory
```

```
[root@dhcpcpc16 ~]# mkdir -p /home/test  
[root@dhcpcpc16 ~]# _
```

Figure 100 Establish the local mount point using the mkdir command.

Mount share of NSA320S:

```
# mount -t nfs ServerName:/remote/directory /local/directory
```

```
[root@dhcpcpc16 ~]#  
[root@dhcpcpc16 ~]# mount -t nfs 10.59.2.100:/i-data/12494823/nfs/NFS_Share /home  
/test
```

Figure 101 where ServerName is the name of the NFS server, /remote/directory is the directory on the NFS server you want to mount, and /local/directory is the mount point on the NFS client.

To check the amount of disk space for each mount you have:

```
[root@dhcpcpc16 ~]# df  
Filesystem            1K-blocks      Used Available Use% Mounted on  
/dev/mapper/VolGroup00-LogVol00  
18156292    3412552   13806576   20% /  
/dev/sda1              101086      12239     83628   13% /boot  
tmpfs                  517552         0     517552    0% /dev/shm  
10.59.2.100:/i-data/12494823/nfs/NFS_Share  
243562880   97043072  146519808   40% /home/test  
[root@dhcpcpc16 ~]# _
```

Figure 102

To check IP address of Linux.

```
[root@dhcppc16 ~]#  
[root@dhcppc16 ~]# ifconfig  
eth0      Link encap:Ethernet  HWaddr 00:0C:29:2B:6B:0D  
          inet addr:10.59.2.36  Bcast:10.59.2.255  Mask:255.255.255.0  
          inet6 addr: fe80::20c:29ff:fe2b:6b0d/64 Scope:Link  
          UP BROADCAST RUNNING MULTICAST  MTU:1500  Metric:1  
          RX packets:1875 errors:0 dropped:0 overruns:0 frame:0  
          TX packets:166 errors:0 dropped:0 overruns:0 carrier:0  
          collisions:0 txqueuelen:1000  
          RX bytes:160725 (156.9 KiB)  TX bytes:15253 (14.8 KiB)  
          Interrupt:67 Base address:0x2000  
  
lo        Link encap:Local Loopback  
          inet addr:127.0.0.1  Mask:255.0.0.0  
          inet6 addr: ::1/128 Scope:Host  
          UP LOOPBACK RUNNING  MTU:16436  Metric:1  
          RX packets:1473 errors:0 dropped:0 overruns:0 frame:0  
          TX packets:1473 errors:0 dropped:0 overruns:0 carrier:0  
          collisions:0 txqueuelen:0  
          RX bytes:2508872 (2.3 MiB)  TX bytes:2508872 (2.3 MiB)  
  
[root@dhcppc16 ~]# _
```

Figure 103

NSA320S shows the NFS session in detail.

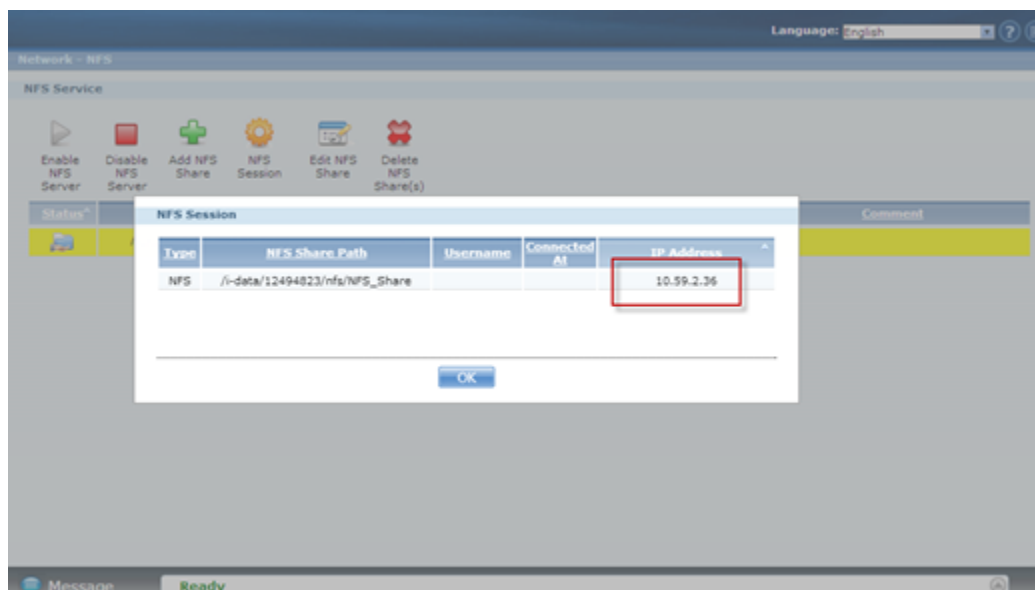


Figure 104

Chapter 2 – FAQ

2

1. What is RAID?

RAID stands for **R**edundant **A**rray of **I**ncexpensive **D**isks. It takes two or more hard disks achieve greater levels of performance, reliability and/or larger volume of data size.

2. What kind of RAID is supported by the NSA320S?

NSA320S supports Raid 1, JBOD, or RAID0.

3. What is the file system supported by the NSA320S?

Internal file system: XFS (or EXT4).

External file system: FAT32, FAT16, EXT2, EXT3 and Reiser FS.

4. Which kind of multimedia server does the NSA320S support?

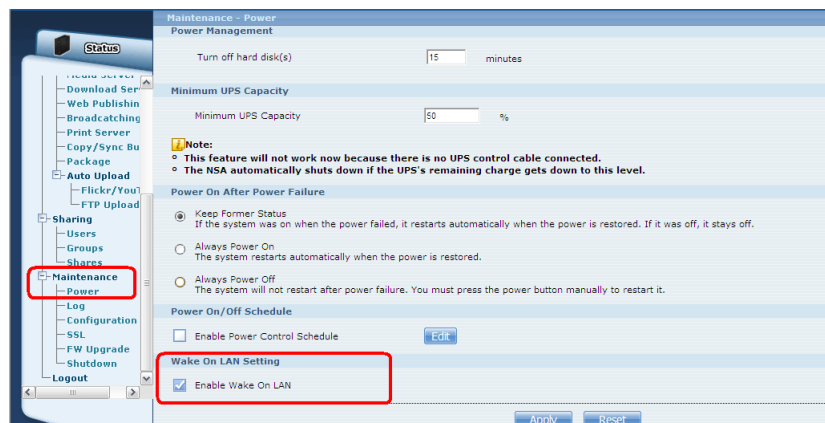
NSA320S supports Squeeze Center, DLNA server, UPnP AV Server, and iTunes Server.

5. Does the NSA320S support a DLNA media server?

Yes. The NSA320S supports a DLNA 1.5 compliant media server.

6. What is the feature “Wake On LAN”?

You can turn on the NSA320S through its wired Ethernet connection after enabling Wake On LAN. To use Wake On LAN from a computer on your LAN, install a program such as Wake On LAN EX or other Wake On LAN programs that supports sending magic packets. You can also use Wake On LAN from a remote location if the router in front of the NSA320S that supports sending magic packets.



7. Which types of video file formats are supported by the NSA320S?

NSA320S supports the following video formats: MPEG-1/MPEG-2, MPEG-4, AVI, DivX, Motion JPEG, Quick Time Video, RealMedia, Ogg, Matroska, ASF, Windows Media Video and ISO. Subtitles are also supported by the NSA320S.

8. Which types of audio file formats are supported by the NSA320S?

NSA320S supports the following audio formats: MP3, Ogg Vorbis, RealMedia, WAVE, Windows Media Audio, Matroska, Monkeys Audio, MP1, MP4, PCM, LPCM, DTS, AC3, Free Lossless Audio Codec, Au, AAC, 3GPP, AIFF, RIFF-based MIDI and Playlist.

9. Which types of image file formats are supported by the NSA320S?

NSA320S supports bitmap, JPEG, and PNG.

10. Which types of web browsers are supported by the NSA320S?

NSA320S supports Internet Explorer 6.0 and later versions, and Firefox 2.00 and later versions. Currently, NSA320S does not support the Safari web browser.