

How to update firmware of R15 router manually?

Go to the D-Link Support site and download the latest firmware of the router

<https://support.dlink.com/ProductInfo.aspx?m=R15>

Search by product, keyword, model

Home Support Forums Report Vulnerability US

D-Link
Building Networks for People

TechSupport
Consumer Business

Product Registration
Register your product to extend your free support from 30 days to 90 days

Warranty Document
Click here to see this product's warranty document.

First Time Setting Up?
Check out our FAQs, Videos and Quick Install Guides

Contact Support
Get help via chat, email or phone

R15
AX1500 Wi-Fi 6 AI Router

Downloads FAQs Videos

For access to the right downloads, please select the correct hardware revision for your device.

A [How to find the hardware version?](#)

Type	Date		
Firmware (1.02.09)	09/30/21	Download	Release Notes
Quick Install Guide (1.02 US)	08/26/21	Download	
User Manual (1.01 WW)	09/22/21	Download	
Datasheet (1.10 WW)	08/06/21	Download	

GPL Source Code End of Product Life-Cycle Terms of Use Privacy Do Not Sell My Info - CA Residents Only Contact Us

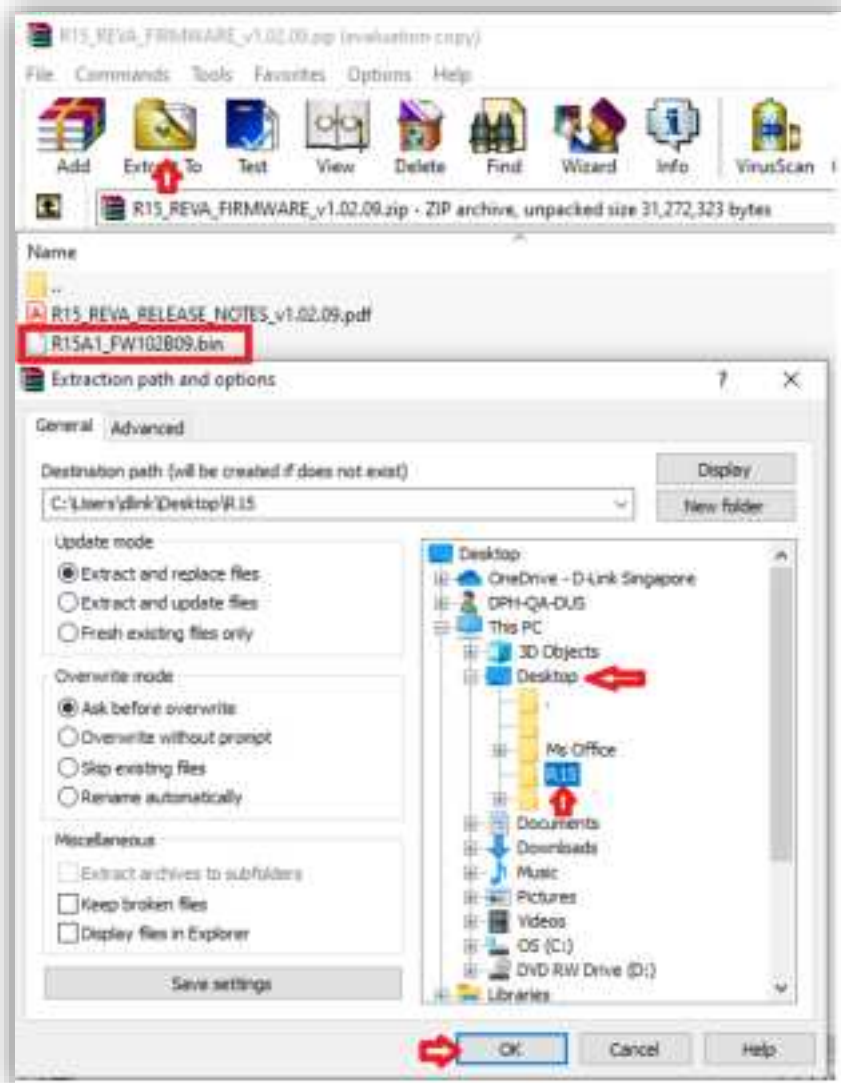
K15_REVA_FIRMW...zip

Show all

D-Link® Technical Support Setup Procedure

Extract the file into a .bin file

- Open the zip file
- Select the .bin file
- Choose the file destination where to extract to
- Click OK



R15A1_FW102B09.bin	10/21/2021 9:51 PM	BIN File
C:\Users\dink\Desktop\R15	11/8/2021 2:05 AM	DIR File

D-Link[®] Technical Support Setup Procedure

Step 1:

Connect your device to the Wi-Fi of the R15 router.

Step 2:

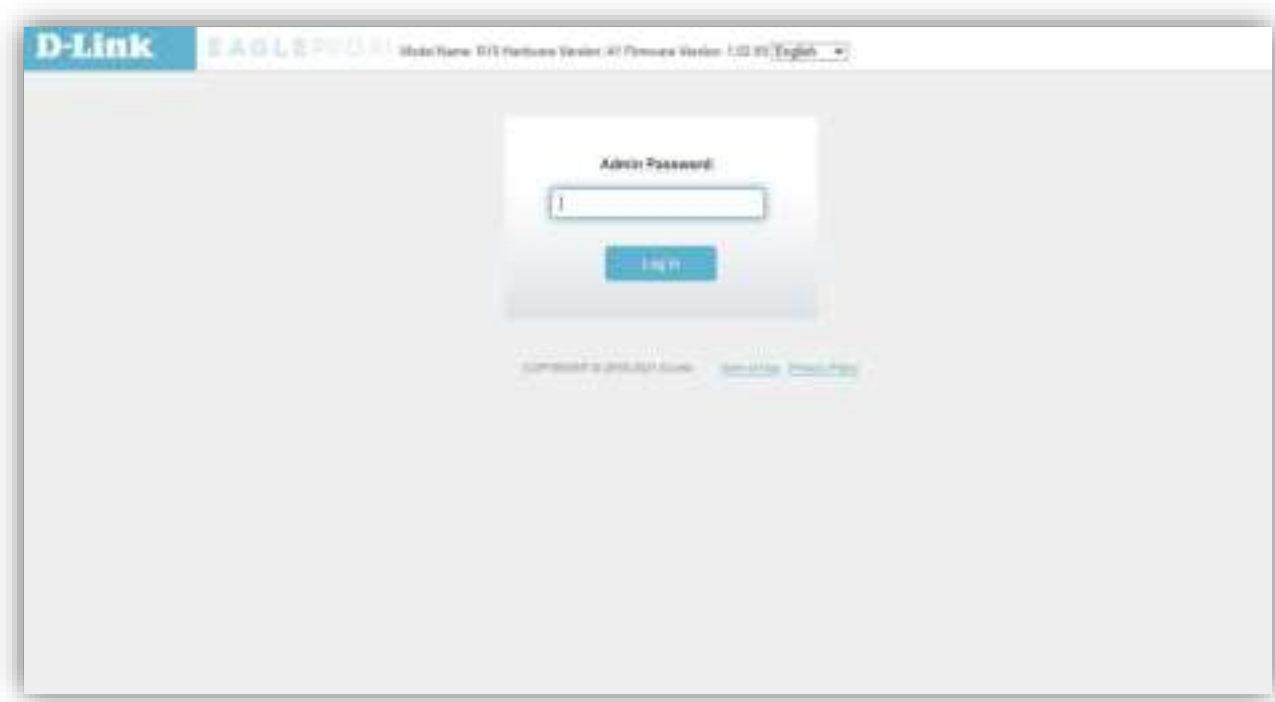
Open a browser and type <http://R15-XXXX.local/> or <http://192.168.0.1> then press Enter

**XXXX Last 4 digit of the router's mac address*

Step 3:

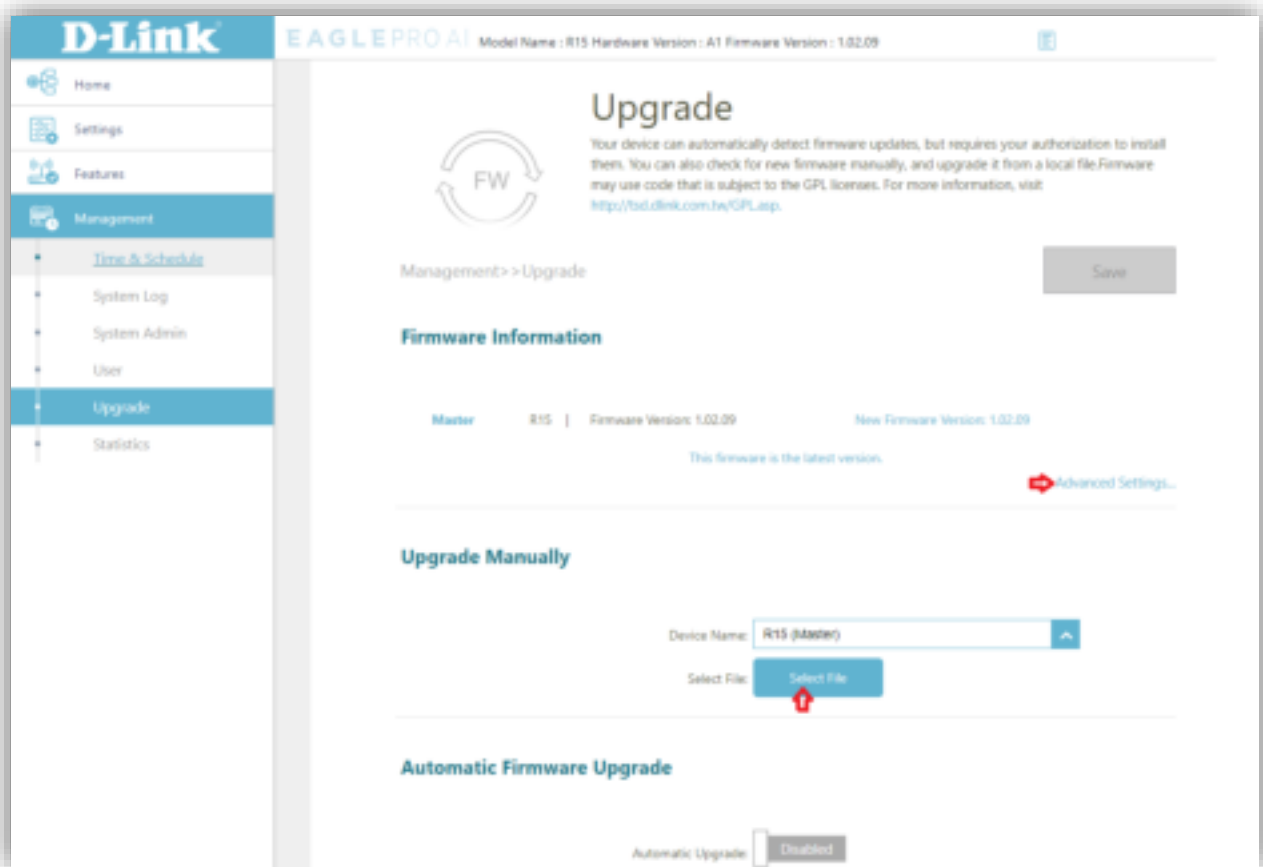
Enter your administrator password.

If you have not changed the default password, check on the configuration card. Click Login.

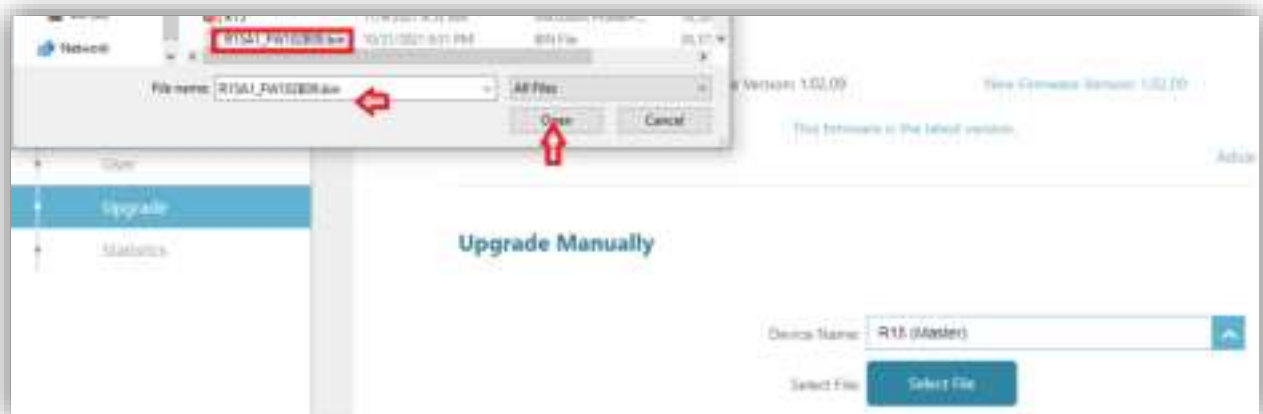


D-Link[®] Technical Support Setup Procedure

- Go to Management > Upgrade > Advance Settings
- Click on Select File

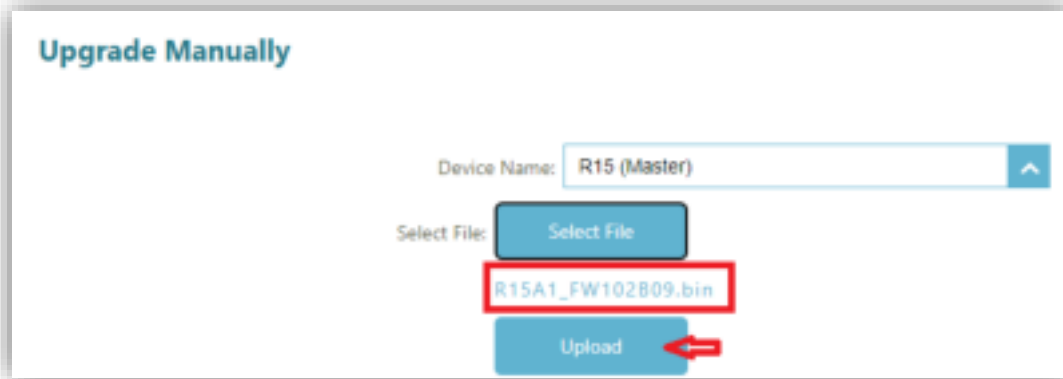


- Go to the folder where the .bin file is saved
- Click Open



D-Link[®] Technical Support Setup Procedure

- Click Upload



- Upload in progress



- Upgrade Success



--End--