

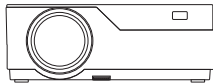
# **MEDIA 18 PRO PROJECTOR USER MANUAL**

Please read this instruction thoroughly before using this product and keep it for future reference.

**ENGLISH**



# PACKING LIST



Media 18 Pro



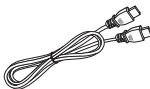
Remote



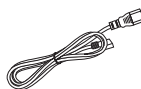
User Manual



AV Cable



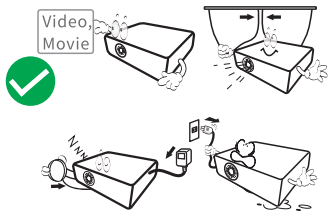
HDMI Cable



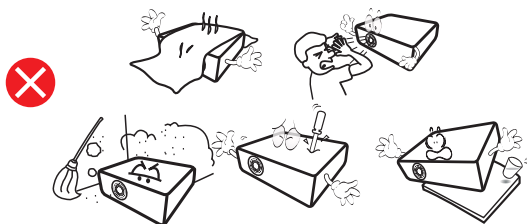
Power Cable

## NOTICE

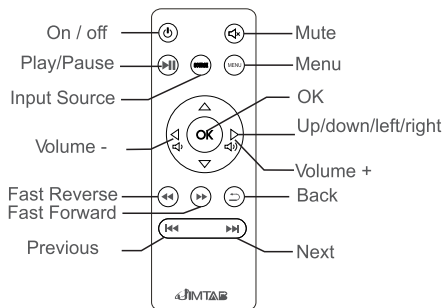
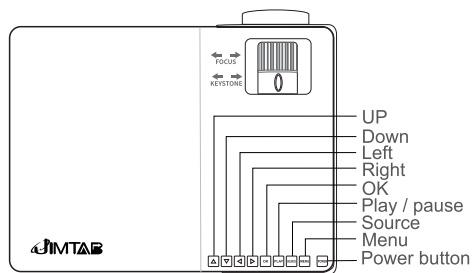
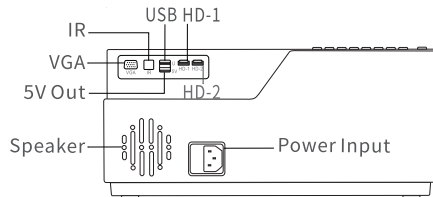
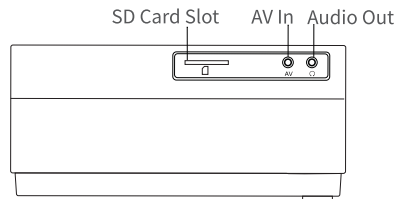
Recommended



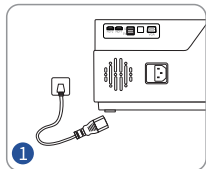
NOT Recommended



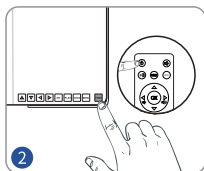
# FUNCTION OVERVIEW



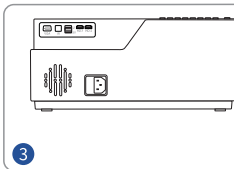
# QUICK START



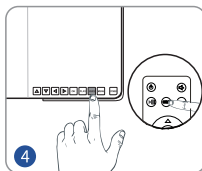
Plug power cable into outlet.



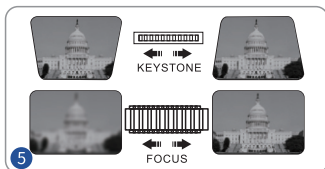
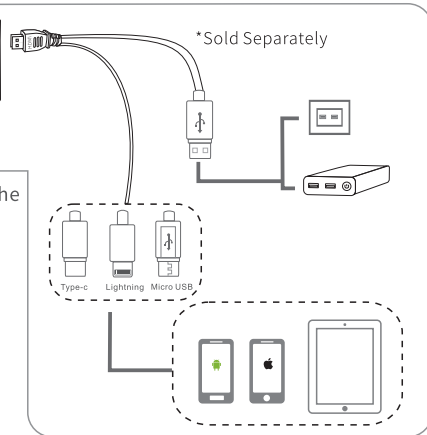
Press power button to turn on the projector.



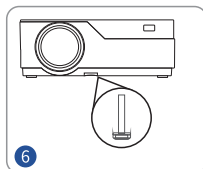
Connect your device to the projector correctly.



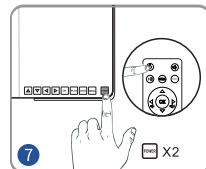
Select correct input source to project your device.



Adjust keystone and focus ring to get the best image performance.



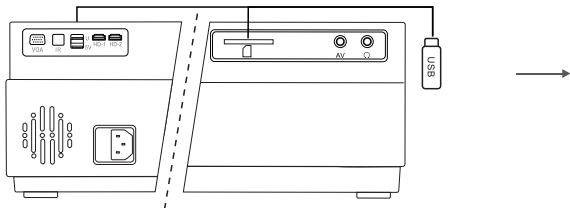
Adjust kickstand accordingly.



Press the power button twice to turn off the projector.

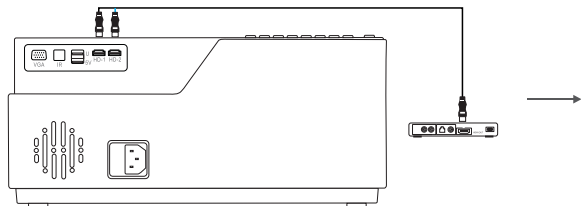
# INPUT SOURCE

A.Multimedia Connection



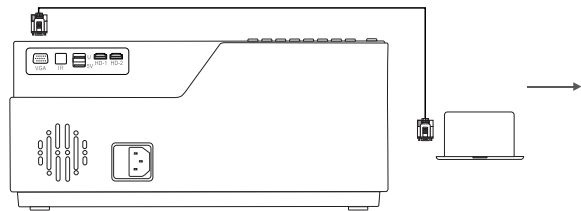
Input Source
VGA
HD 1
HD 2
AV
USB
SD

B.HDMI Connection



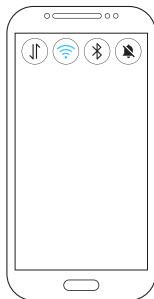
Input Source
VGA
HD 1
HD 2
AV
USB
SD

C.VGA Connection

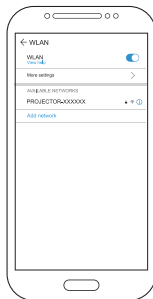


Input Source
VGA
HD 1
HD 2
AV
USB
SD

# WIFI CONNECTION ( ANDROID )



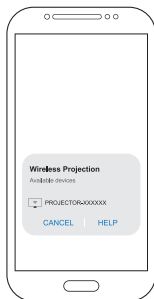
- 1 Go to settings, turn on "WLAN" on your Android device



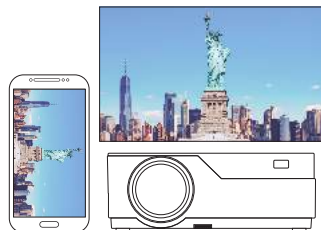
- 2 Connect your Android device to the WiFi projector-xxxxxx



- 3 Enter password:12345678



- 4 Turn on the wireless projection function in phone's status bar or setting page, search "projector-XXXX" and click it to connect

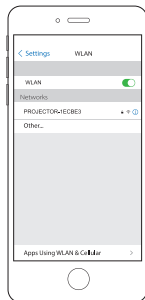


- 5 Click "projector-xxxxxx" on your Android device, the screen mirroring will success in seconds

# WIFI CONNECTION ( IOS )



- 1 Turn on WLAN(WIFI) and mobile data on your phone



- 2 Enter your phone setting , turn on wireless projection and search "projector-xxxxxx"



- 3 Enter password:12345678



- 4 Open Control Center and tap Screen Mirroring on your IOS device.Select "projector-xxxxxx" from the searching list

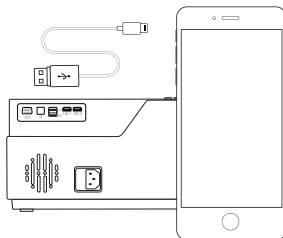


- 5 Click "projector-xxxxxx" on your IOS device, the screen mirroring will success in seconds



## USE WIRED MIRRORING CONNECTION(IOS)

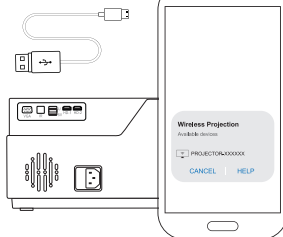
Input Source
VGA
AV
HD-1
HD-2
USB
SD
Screen Mirror



- 1 Select source as "Multi-Screen" after power on
- 2 Connect projector and iphone by original USB data cable by USB 5V input .
- 3 2 . Get "Trust" from iphone by the first time,enter your pass word , same as unlock screen password

## USE WIRED MIRRORING CONNECTION(ANDROID)

Input Source
VGA
AV
HD-1
HD-2
USB
SD
Screen Mirror



- 1 Select source as "Multi-Screen" after power on
- 2 Plug original data micro-usb cable to connect.Turn on multi-screen on your Android device settings directly
- 3 Choose "projector-xxxxxx" and Start Mirroring

Finish the wired projection of Android device

# HOW TO CONNECT TO YOUR OWN WIFI

 Please connect to your home WiFi network to save your mobile traffic.



- 1 Turn on WLAN(WIFI) and mobile data on your phone



- 2 Enter your phone WLAN (WIFI) setting and search "projector-xxxxxx"



- 3 Enter password:12345678



- 4 Open your phone browser and input IP "192.168.49.1", then enter WIFI AP to scan WIFI



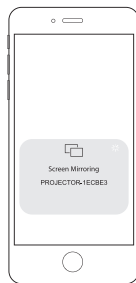
- 5 Click "WiFi AP"



- 6 Click "Scan"



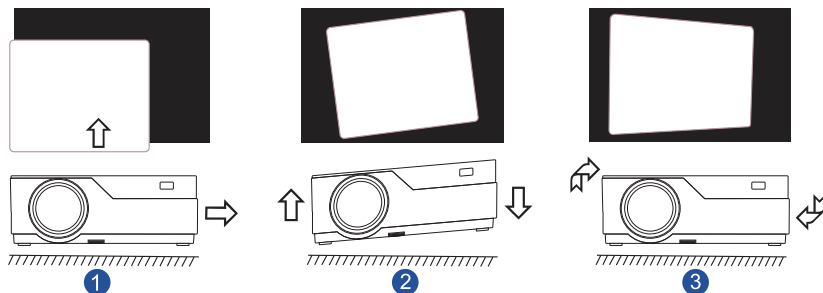
- 7 Connect your home WIFI



- 8 Turn on Screen Mirroring function

Choose and connect "projector-xxxxxx" and Start Mirroring

# INSTALLATION AND DEBUGGING



## Adjust the image projected onto the screen

1. If the projected picture is off the screen  
Please aim the lens of the projector at the center of the screen.

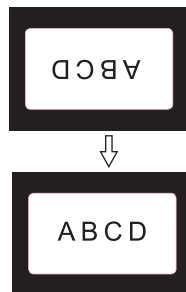
2. If the picture is distorted

As shown in Figure 2, please place the projector on a horizontal surface  
As shown in Figure 3, use the remote control to adjust by its  $\pm 50$  data ladder correction function.



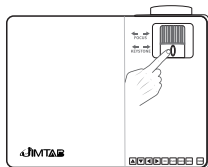
### Precaution

When the projector is suspended from the ceiling or in a rear projection system, please change the projection direction in the settings



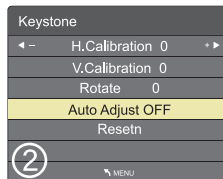
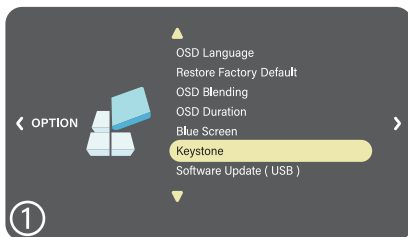
# TRAPEZOIDAL CORRECTION FUNCTION

## ① $\pm 15^\circ$ manual keystone correction



Adjust  $\pm 15^\circ$  image performance by using manual keystone correction

## ② $\pm 50^\circ$ electronic keystone correction

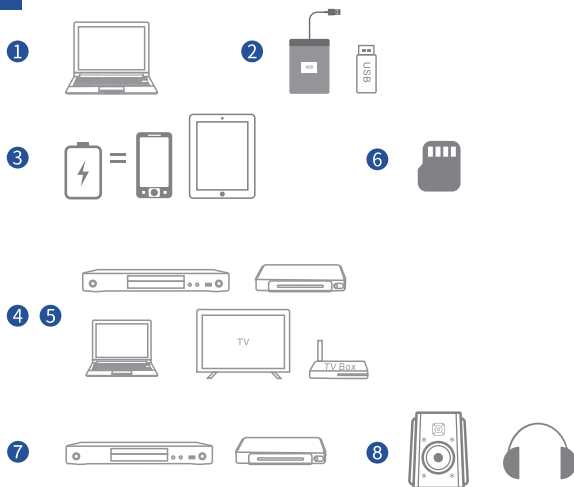
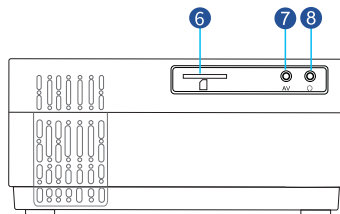
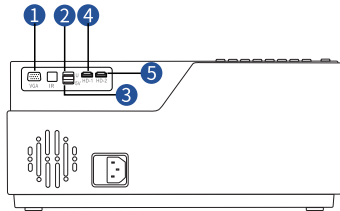


1. Press the menu button on remote control

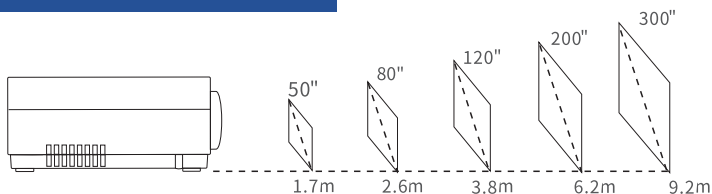
2. Click the function of keystone ①

3. Allows auto keystone correction vertically and Horizontally ②

## PROJECTOR CONNECTION



## PROJECTION DISTANCE&SIZE



In order to get the best projection results. Please select a throw distance higher than 2.6 meters

# SPECIFICATION

Display Technology	LCD	Light Source	LED
Native Resolution	1920*1080	Resolution Supported	576i、576P、720i、720P、1080i、1080P
Projection Distance	1.7M-9.2M	Projection Size	50"-300"
Focus	Manual	Aspect Ratio	4:3/16:9/auto
Speaker	5W*4ohm	Keystone Correction	±50°
Dimension	308*232*105mm	Installation Type	Front/Rear/Ceiling
Power Supply	AC 100-240V	Weight	2.6KG
Video Format Supported	AVI/MP4/MKV/FLV/MOV/ RMVB/3GP/MPEG1/ MPEG2/H.264/XVID	Photo Format Supported	BMP/JPG/JPEG/PNG/GIF
Ports	HD IN*2/USB*1/5V Out*1 VGA Port*1/AV IN*1/ Audio Out*1/SD Card Slot*1	Audio Format Supported	MP2/MP3/PCM/FLAC/WMA/AAC

# TROUBLESHOOTING GUIDE

## Tips:

**If you find black spots on the screen during use. Please do not worry. Contact our customer service mailbox and we will provide you with a video solution.**

### 1. No Sound

- \* Turn Dolby audio off in your device.
- \* External speaker is required for VGA cable connection.

### 2. Blurry Image

- \* Adjust focus ring/keystone.
- \* Projector and screen/wall must be in effective distance.

### 3. Remote Unresponsive

- \* Make sure remote points at IR receiver directly.
- \* Do not cover IR receiver.

### 4. Mobile Connection

iOS: Genuine lightning to HDMI cable

Android: Micro USB to HDMI adapter/Type C to HDMI cable

### 5. Up Side Down Images

Enter "Menu" on projector or remote to flip the projection image.

**If you have any questions about our products and you can contact our customer support any time!**

## **CUSTOMER SUPPORT**

North America	<b><a href="mailto:support@jimtab.com">support@jimtab.com</a></b>
United Kingdom	<b><a href="mailto:support.uk@jimtab.com">support.uk@jimtab.com</a></b>
Deutschland	<b><a href="mailto:support.de@jimtab.com">support.de@jimtab.com</a></b>
France	<b><a href="mailto:support.fr@jimtab.com">support.fr@jimtab.com</a></b>
España	<b><a href="mailto:support.es@jimtab.com">support.es@jimtab.com</a></b>
Italia	<b><a href="mailto:support.it@jimtab.com">support.it@jimtab.com</a></b>
日本	<b><a href="mailto:support.jp@jimtab.com">support.jp@jimtab.com</a></b>
Website	<b><a href="http://www.jimtab.com">www.jimtab.com</a></b>







M18 PRO PROJECTOR

Made in China

**RoSH**



**IC**

