

FlexiSpot

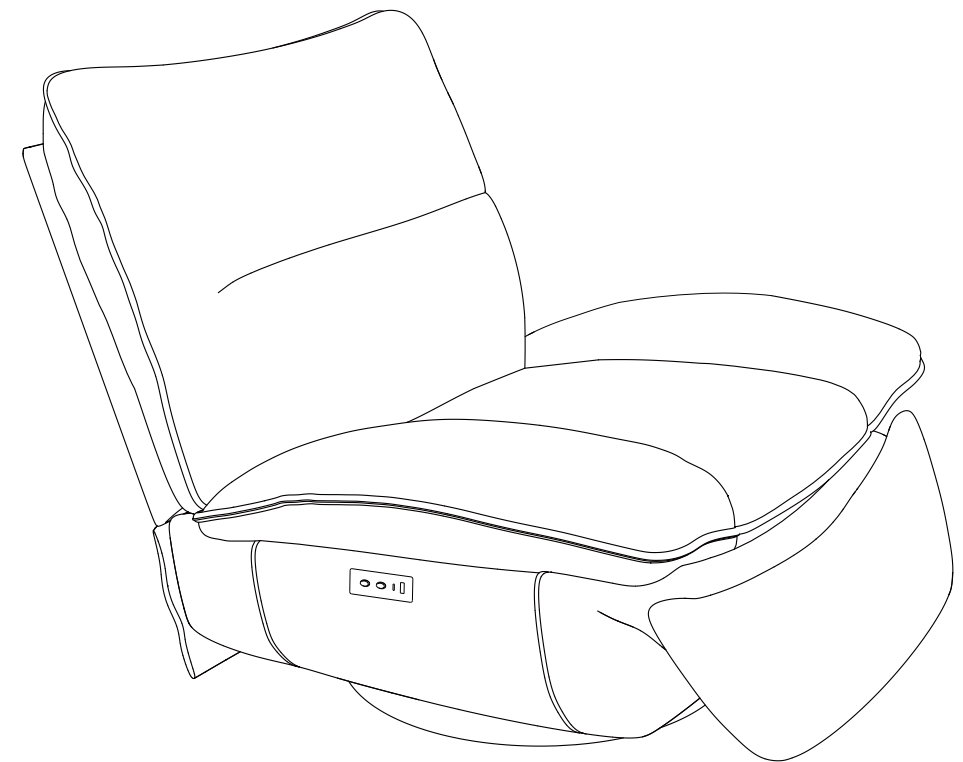
Item No. XR6
User Manual



Warranty



Precaution



+49 211 368 74223
info@flexispot.de

CONTENTS

English-----	01
German-----	11
French-----	21
Italian-----	31
Spanish-----	41

Materials

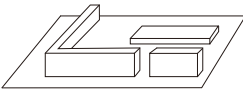
Main Materials	Usage Areas
Fabric	Main structure
Foam	Internal padding
Carbon steel pipe	Frame
Wood panel	Armrests and backrest

Product Specifications

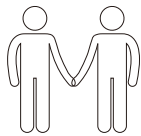
Product Dimensions		1020x970x1020mm						
Cushion Dimensions	Seat Depth	530mm	Seat Width	510mm	Seat Height	550mm	Armrest Height	570mm
TYPE-A+TYPE-C Charging Power				10W				

Note: Dimensions are measured manually, so the actual product may vary by 3-5 cm. Please refer to the actual product for precise measurements.

Installation Preparation



Assemble on flat floor to avoid scratches



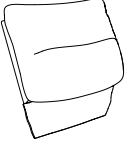
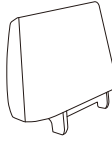






Installation should be done with two or more people



Prepare a knife or scissors

Components List

A x1  4x4	B x4 	1 Backrest padding x1 	2 Backrest frame x1 	3 Recliner base x1 	4 Seat cushion x1 	5 Legrest x1 	6 Power adapter x1 
---	--	--	--	---	--	---	---

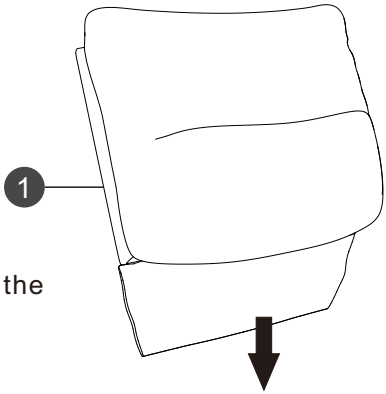
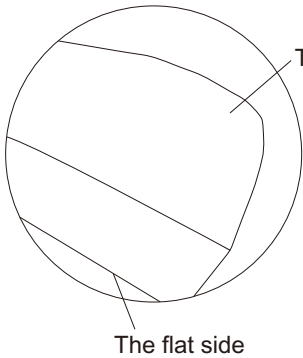
Assembly Instructions

1

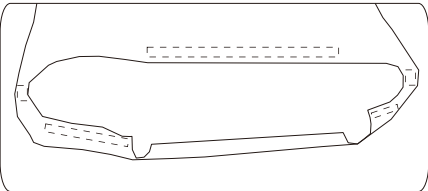
Assemble the backrest and backrest frame.



Make sure to align the flat side of the backrest frame with the backrest padding for proper installation.



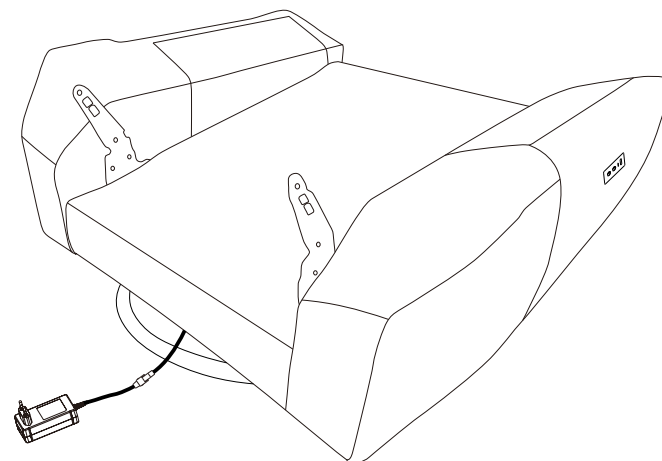
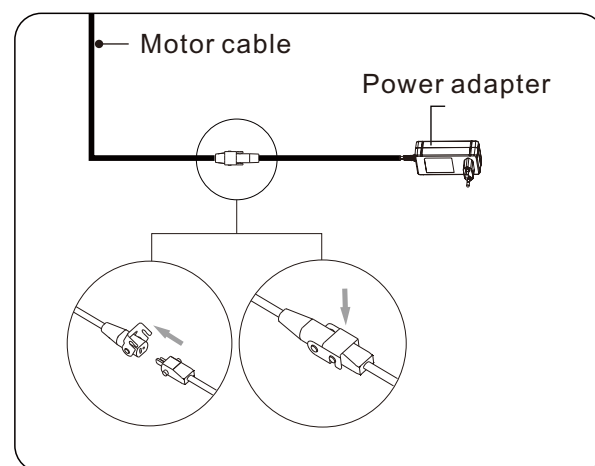
Peel off the protective layer from the Velcro and attach it to the Velcro on the lower layer.



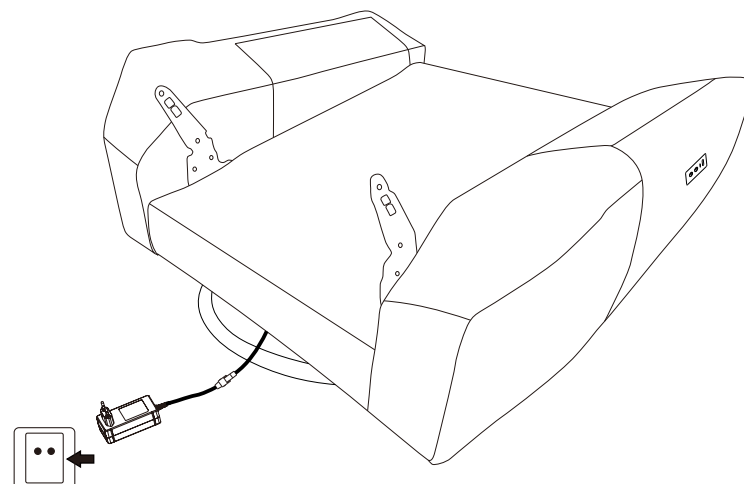
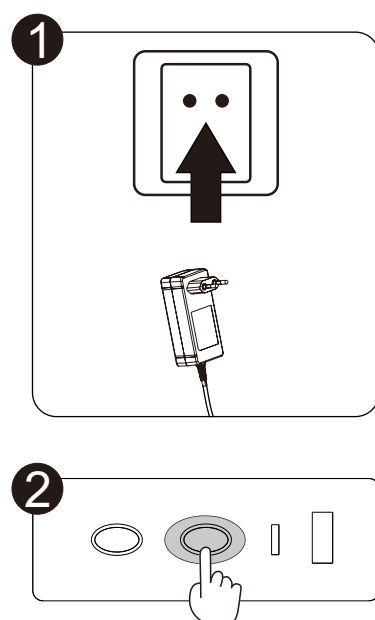
2

2

Please complete the wiring as shown in the diagram.

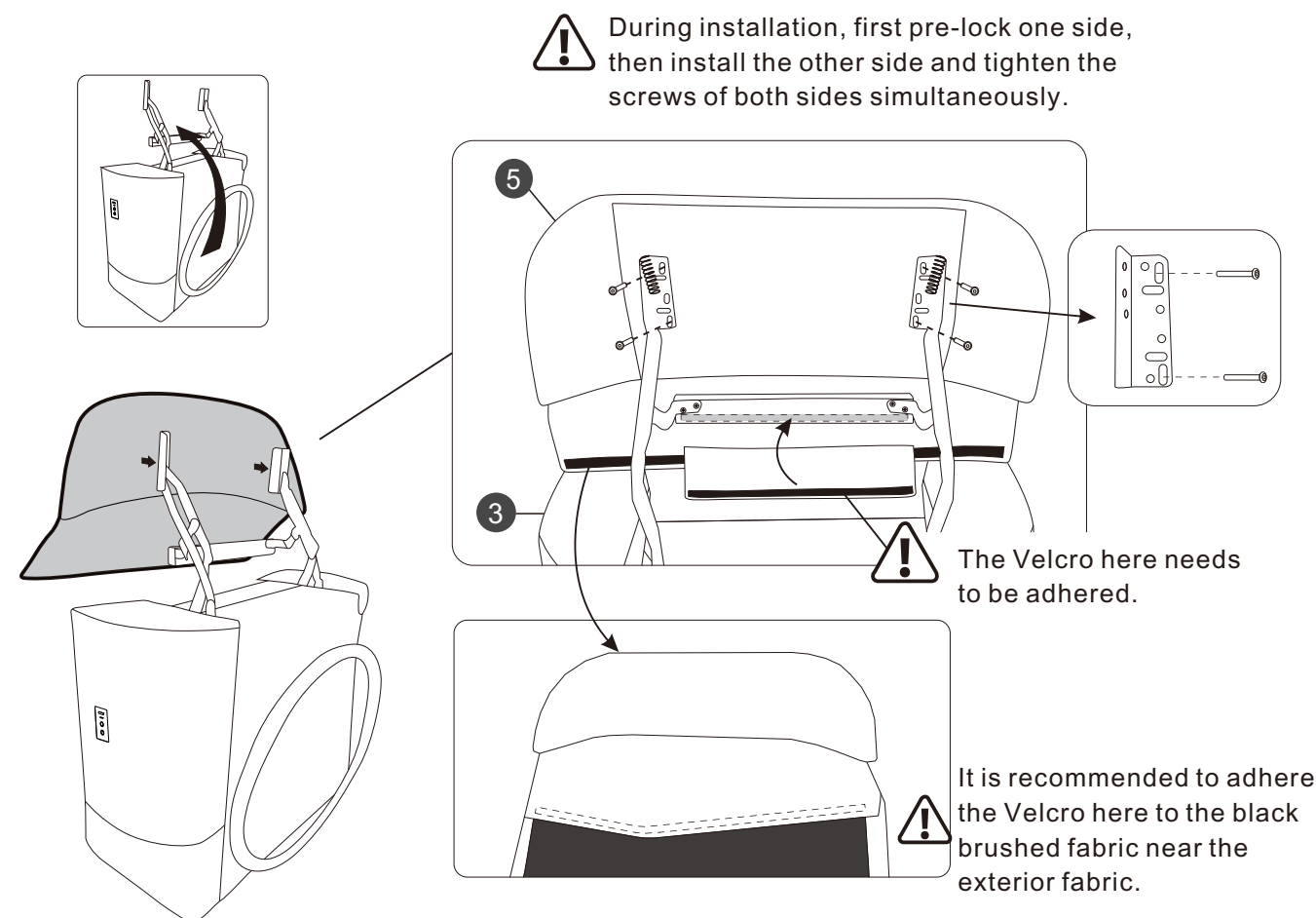
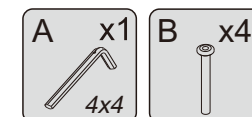


Plug the adapter into the socket, and use the switch to adjust the recliner to the reclined position.



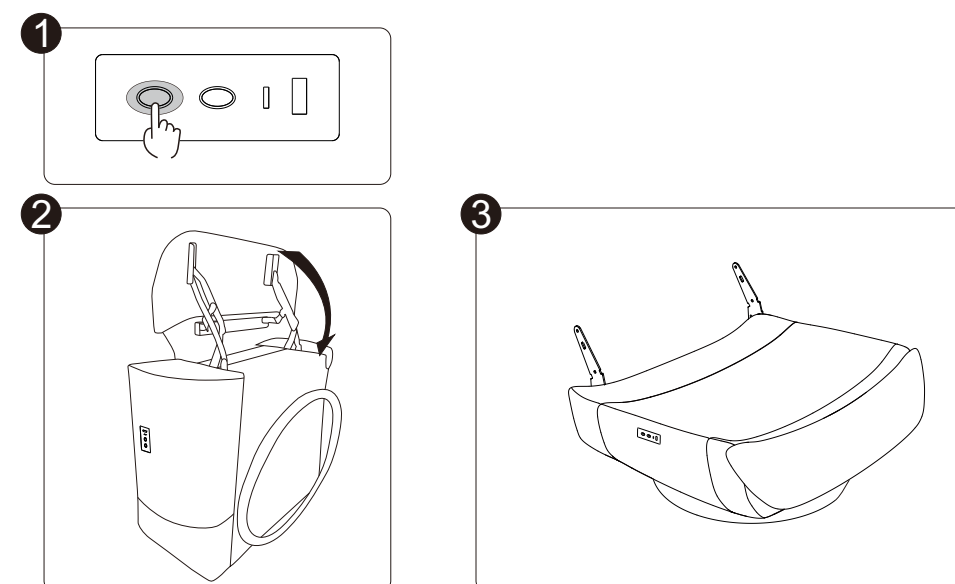
3

Flip the base to the angle shown in the diagram to facilitate the installation of the legrest. Make sure no one stands in front of the recliner when it is open to avoid collisions.



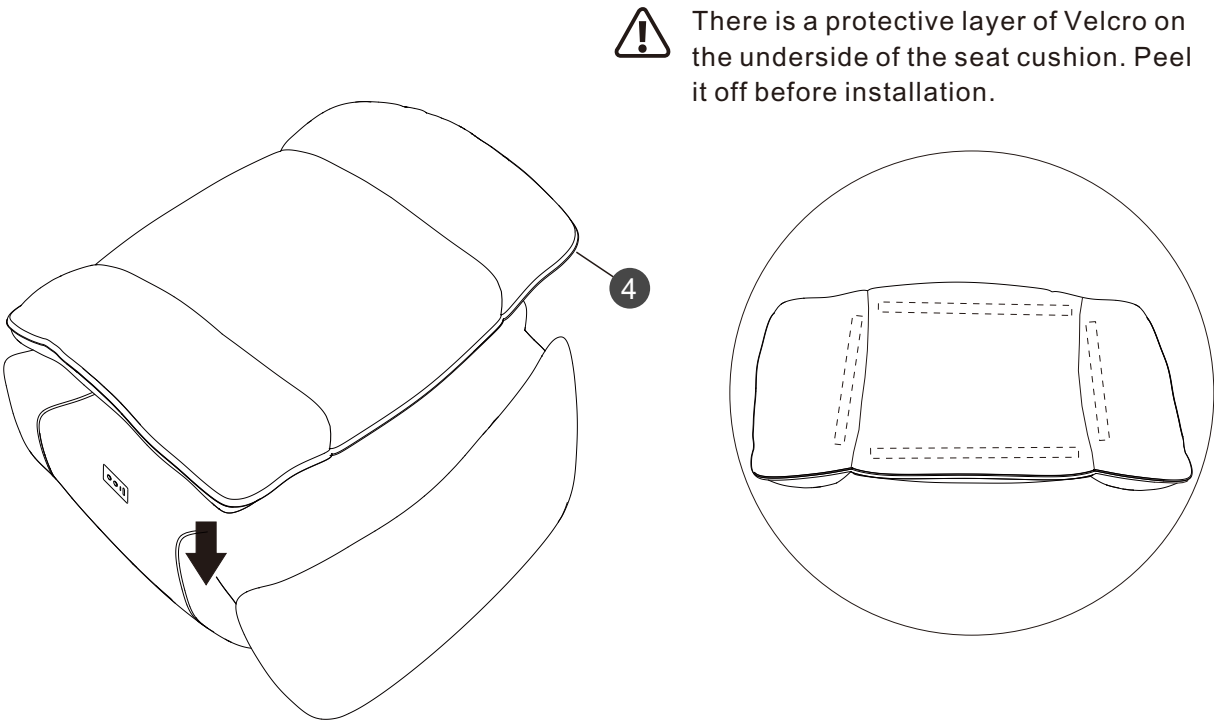
4

After adjusting the recliner to a sitting position using the switch, flip it to a flat position.



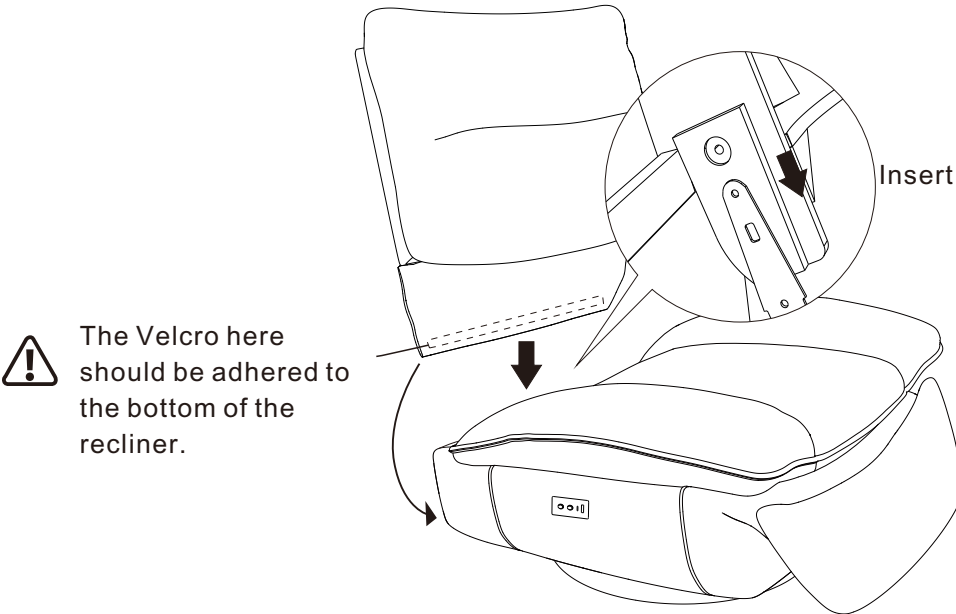
5

Install the seat cushion, ensuring that the front edge of the cushion is flush with the legrest.



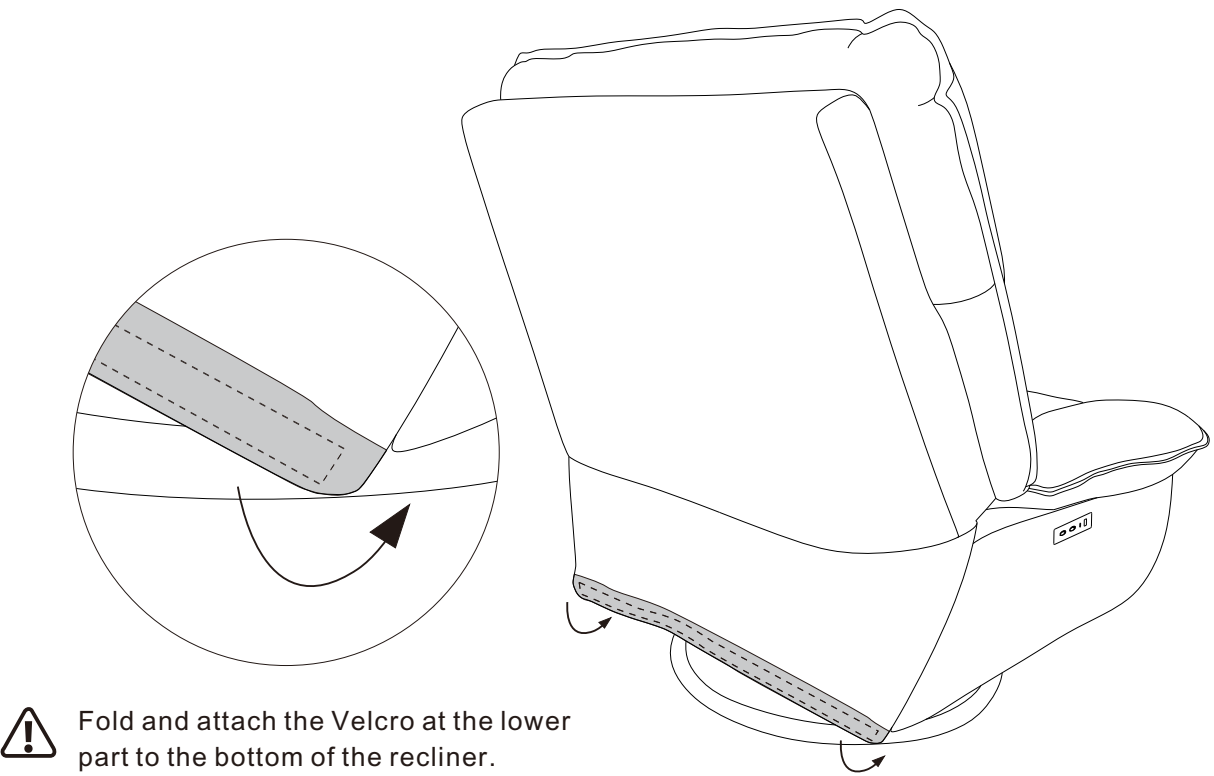
6

Install the backrest.

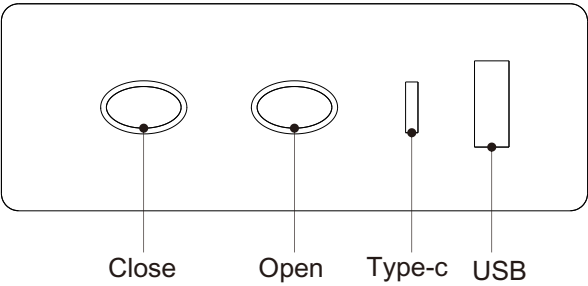


7

Neatly arrange the backrest lower part, and attach the Velcro to the back of the frame as shown.



Switch Function Instructions

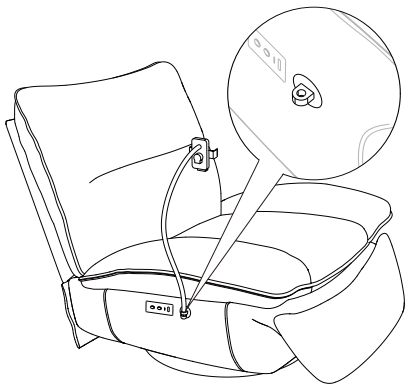


	Control the recliner to open Press and hold the button to gradually open the recliner to the reclining position.
	Control the recliner to close Press and hold the button to gradually close the recliner to the sitting position.

Do not insert any body parts, such as your head, hands, or feet, into the underside of the frame while the recliner is in operation.

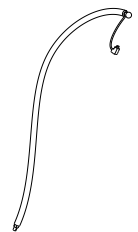
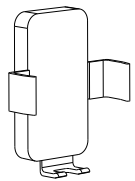

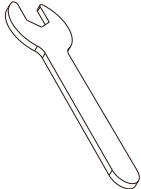
Phone Holder Installation

If you purchased the recliner with a phone holder, the installation will also include steps for the phone holder. Detailed instructions are as follows:



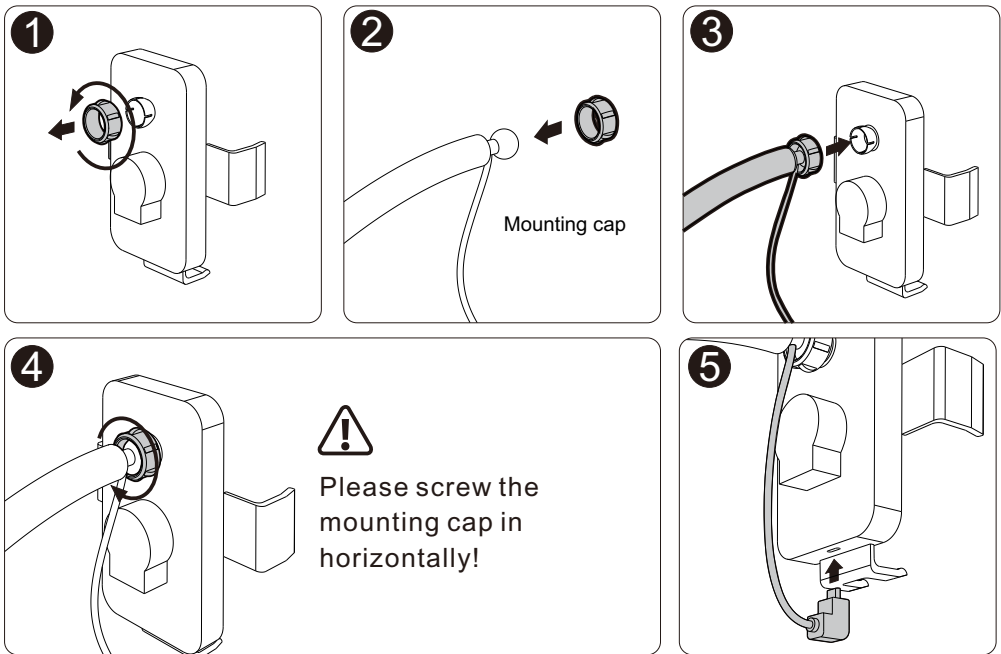
Note: For the recliner version with a phone holder, the total charging power of TYPE-A + TYPE-C + wireless charging is 10W.

Components List for Phone Holder Installation

			
Phone holder rod x1	Phone holder x1	Hex nut x1	Wrench x1

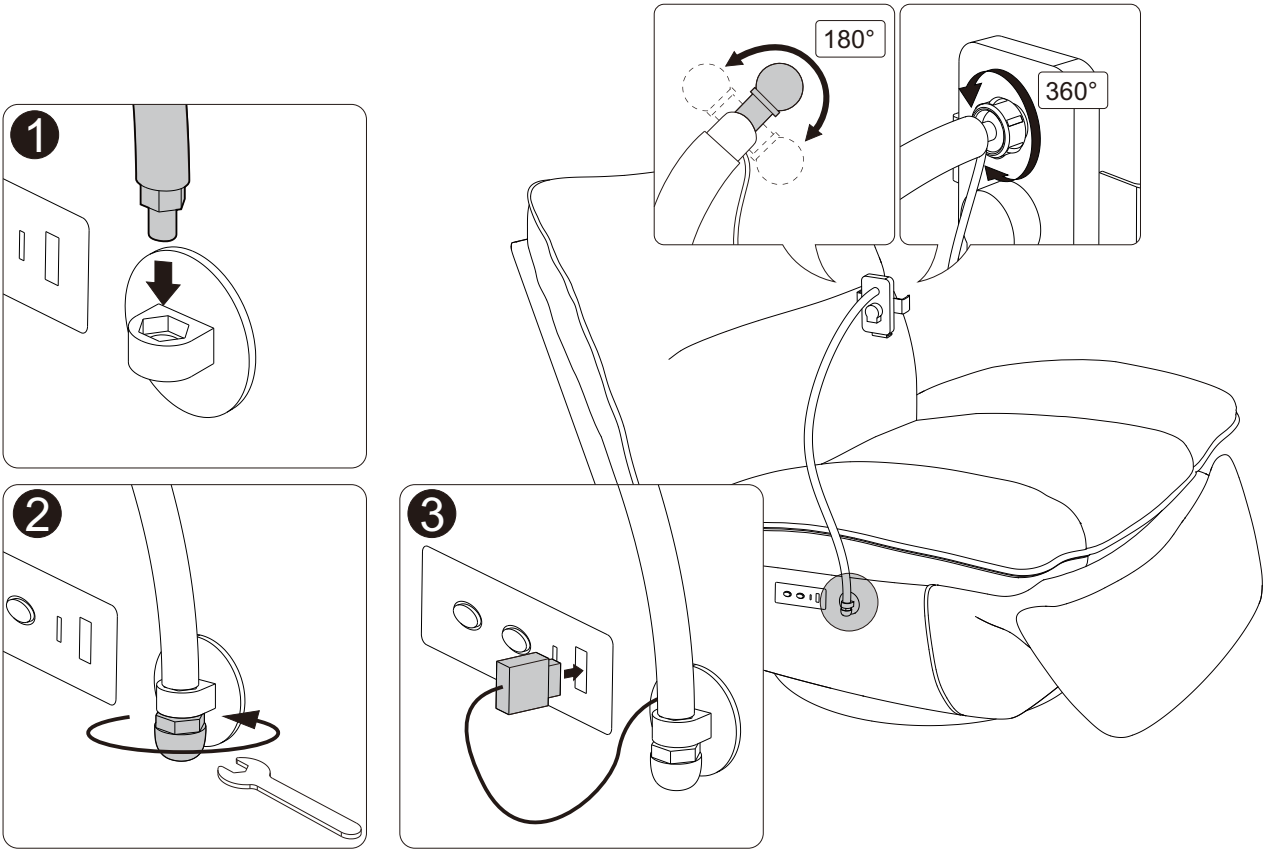
1

Connect the phone holder to the rod.

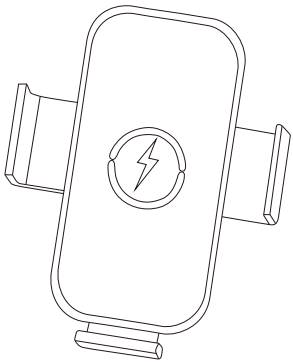


2

Connect the wireless charging phone holder to the recliner.



Wireless Charging Function Instructions



- Operating Instructions:**
- 1. When the phone holder is powered on, it will automatically open.
 - 2. When a phone is placed on the holder, it will automatically close and secure the phone.
 - 3. While the phone is on the holder, press the side button (either side button) once to open the holder and remove the phone.

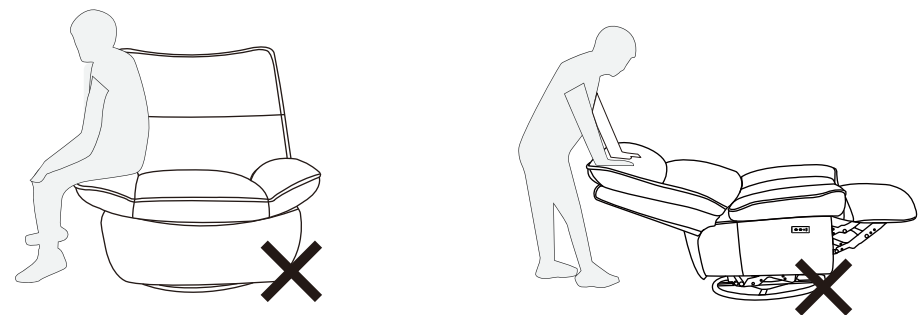
If the phone supports wireless charging, the holder will provide power to the phone (Adjust the placement for faster charging). If the phone does not support wireless charging, the holder will function as a standard phone holder.

Indicator Light Status

Solid blue light	Wireless charging is active and functioning normally
Solid red light	Wireless charging is in standby mode

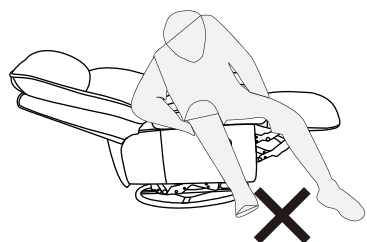
If the red and blue lights flash alternately, please check if there are any foreign objects on the wireless charger or if the placed object is incompatible.

Warning

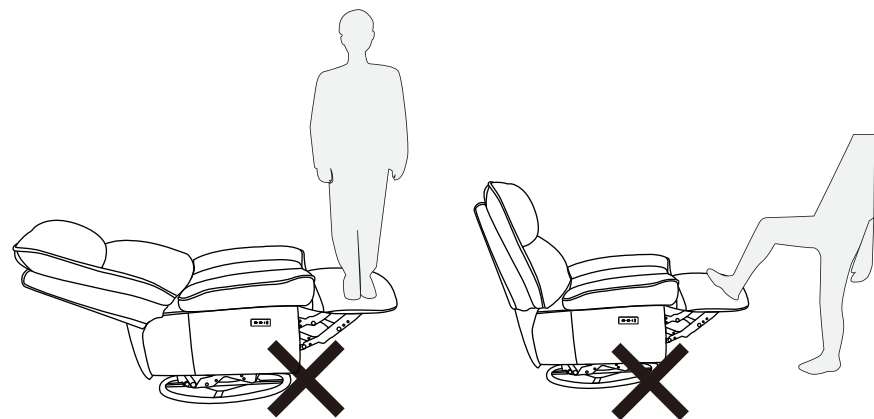
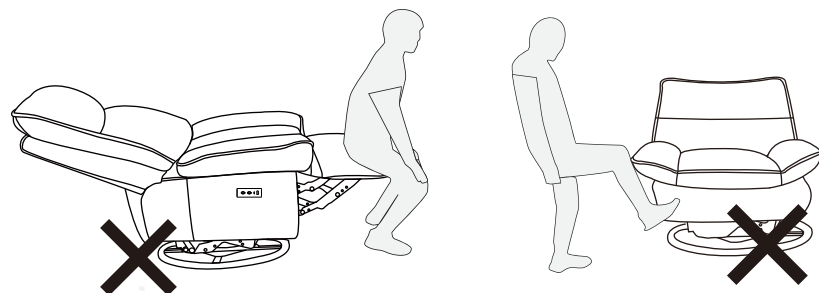


Do not sit on or press armrest.

Do not press backrest after reclining.

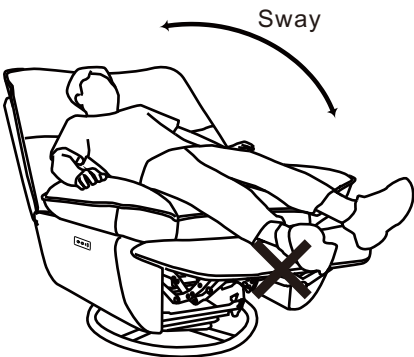


Do not get off the chair while it is reclined.

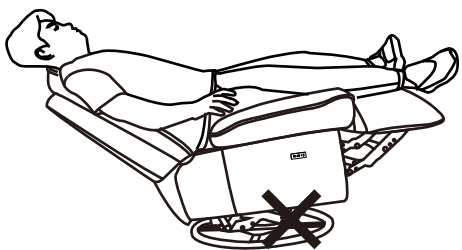


Do not sit/kick/stand on the footrest at any time.

Warning



Do not sway back and forth when the recliner is fully open.



Avoid heavily sitting, and when reclining, ensure that your buttocks are positioned on the cushion and avoid sitting on the backrest of the recliner.



Do not force the recliner to lean back or lie on its back, as it is easy to tip.



Do not sit on the front edge of the recliner or on the footrest of the recliner, which is prone to tipping forward.

Troubleshooting

If this product malfunctions, please refer to the following situations and possible solutions:

Situations	Solutions
Frame is not flexible during usage	1. Adjust the product's position (level it) 2. Apply a small amount of lubricant to the sticking points
The product exhibits a non-smooth feeling during operation	Remove any debris or obstacles from beneath and around the recliner
The product has an odor	Keep the area well-ventilated or spray with a recliner-specific deodorizer.
The switch is not working	Check if the wiring of the switch is connected properly.
Recliner functions are all unavailable	1. Check that the motor cable and power cable are connected correctly. 2. Check that all wiring connections are correct. 3. Check that the power cable is plugged into a functioning socket.
If issues persist after following the above troubleshooting solutions, please contact our customer service team.	