

# WHOLE SLOW JUICER

## USER MANUAL

### JS8301

# SIFENE



**NEED HELP ? CONTACT US!**

#### CUSTOMER SUPPORT

✉ Email: [support@sifene.com](mailto:support@sifene.com)

🌐 Web: <https://sifene.com/>

**JUICE.**  
**VITAMINS.**  
**NUTRIENTS.**  
**HEALTH.**

## **QUESTIONS OR CONCERNS?**

If you encounter any issues or have any questions about your new product, please contact our helpful Customer Support Team.

## **CONTACT US!**

Email: [support@sifene.com](mailto:support@sifene.com)

Web: <https://sifene.com/>

# Table Of Contents

Precautions for Safe Usage	02
Components and Functions	05
Usage	08
Care and maintenance	13
Product Safety Indicators	15
Failure Analysis and Troubleshooting	15
Recipes	18
Warranty	23

# Precautions for Safe Usage

1. The input voltage of this product is 120V~60Hz, so please check before use.
2. Be sure to disconnect the power supply before removing, installing or adjusting any part of the product. If you find it difficult to disassemble the juicing assembly on the main unit, please turn the knob to REV and wait for the screw propeller to reverse for a few seconds before disconnecting the power to disassemble the juicing assembly.
3. This product is an X-connection. If the power cord is damaged, it must be replaced by the manufacturer or its maintenance department or similarly specialized personnel in order to avoid danger.
4. Before use, please check whether the power cord, plug, juice net, screw propeller, juice body and other parts are damaged, if found damaged, please stop using the product, please contact our customer service department in time, please do not disassemble and repair by yourself to avoid danger.
5. If the product needs to be repaired in the course of use, please contact our customer service department or go directly to the company's designated repair point for repair, do not disassemble by yourself to avoid danger.
6. Before turning on the power, please make sure that the removable parts such as the juicing body, screw propeller, juice net and juicing body cover are installed in place.
7. When the product is working, it is strictly prohibited to put your hand or sharp objects into the feed opening and touch the rotating parts such as the screw propeller. To avoid injury or damage to the product; it is strictly prohibited to use any object

to replace the pusher bar, and it is strictly prohibited to put your eyes close to the feed opening to prevent accidents.

8. Ingredients should be cut into small pieces to fit into the inlet of the juicing body; fruits and vegetables with cores, hard seeds, thick skins or hard shells should be removed before processing.

9. When adding ingredients, do not push the ingredients with too much force to avoid damaging the accessories.

10. After squeezing some fruits and vegetables after the juice net, juice body cover, screw propeller and other accessories may be stained, is a normal phenomenon, staining does not affect consumption, no harm to health.

11. The product with intelligent protection chip, will automatically stop after 15 minutes of continuous work, then please stop for 40 minutes, to be cooled by the motor and then continue to use, this method is conducive to prolonging the life of the product.

12. The product is designed with current limitation, when processing hard ingredients, the motor will be blocked and the current will rise. When the current exceeds 2A, the machine will "beep" a prompt, and then the motor will stop working. This method can effectively protect the motor overcurrent, prolong the life of the motor.

13. If there is a possibility of motor overheating protection in the process of long-time operation automatically stop, you need to stop for 50-60 minutes, until the motor cools down before continuing to use. This method is to protect the motor.

14. After use, turn the knob to 0, the motor will stop and then reverse automatically for 1 second, please wait until the motor and screw propeller stop rotating, and make sure to disconnect the power supply before removing the detachable parts of the equipment.

15. All the accessories of this product are not allowed to be sterilized by hot water over 80℃ and microwave oven to avoid heat deformation and damage. The materials of the parts in contact with the ingredients are in line with food hygiene certification, clean, hygienic and reliable.

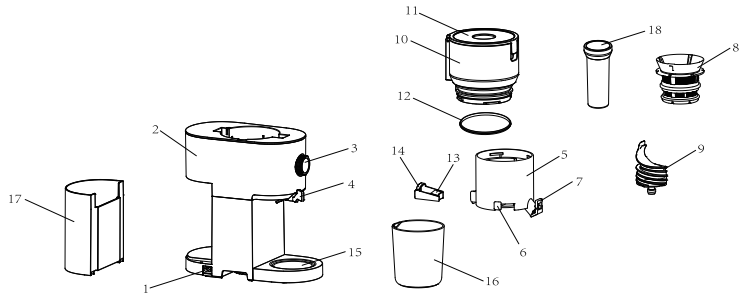
16. Do not put the body into water or other liquids or rinse it under water or other liquids to avoid damaging the body.

17. Do not use steel wool, abrasive cleaners or caustic liquids (such as gasoline or acetone) to clean the product.

18. The product should be stored out of the reach of children and should not be used or played with by persons (including children) who are physically or mentally impaired or lack relevant experience and knowledge.

19. This product is intended for personal or household use only.

# Components and Functions



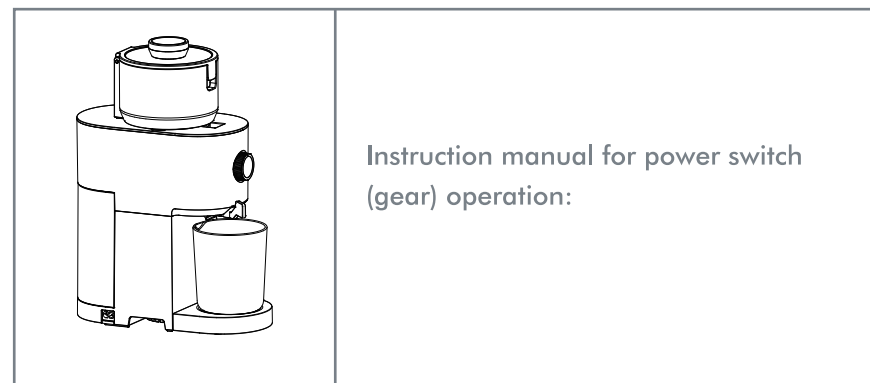
serial number	Part Name	Function
1	Power Cord Socket	Used to connect the power cord (turn on the power) to provide power.
2	human body	The main parts of this machine, inside the motor and other parts, is the power source of this machine, providing power.
3	power switch	Controls the working status of the product with forward, off and reverse.
4	rotor	Controls the opening and closing of the juicing body outlet cover.
5	juice extractor	It is the main part of juicing. Ingredients enter from the filling port on the top of the juicing body cover, and the juice and pomace are discharged through the juice outlet and pomace outlet.
6	retaining ring	It is possible to unlock the fixation of the screw propeller in the juicing body.

serial number	Part Name	Function
7	Juice spout cover	Prevents remaining juice from the juicing body from dripping onto the main unit (juice outlet sealant inside).
8	Juice mesh (inlaid perforated mesh)	Grinding with the screw propeller grinds the extracted ingredients and filters out the juice.
9	screw propeller	The main component of a juicer that conveys the ingredients and grinds the food by grinding it against the juice screen or squeezer.
10	Juice Extractor Cover	The main component of juicing, the ingredients enter through the filling port on the top of the juicing body cover and grind with the screw propeller to grind the extracted ingredients.
11	flip-top (mobile phone, handbag etc)	Can be turned up and down for easy feeding. There are through holes in the center, which can be used with the propelling rod to press the material.
12	Juice Body Cover Seal	Put it into the slot corresponding to the juicing cover and cooperate with the juicing body to prevent the juice in the inner cavity of the juicing body from overflowing outside.

serial number	Part Name	Function
13	Slag outlet silicone	It is placed in the slot for the slag outlet insert to guide the fruit residue out of the slag outlet channel.
14	Slag outlet inserts	Placed into the juice body inside the outlet channel, removable parts, convenient for users to clean the outlet channel.
15	Juice Cup Holder	Detachable parts, placed under the main unit's spinning rod, are used to support the juice cup for easy removal and cleaning.
16	juice cup	Catch and collect the juice separated from the juicing body.
17	fruit cup	Catch and collect the pomace separated from the juicing body.
18	push rod	When putting in the ingredients, gently push the ingredients to make full contact with the screw propeller to enhance the juicing efficiency.

## Usage

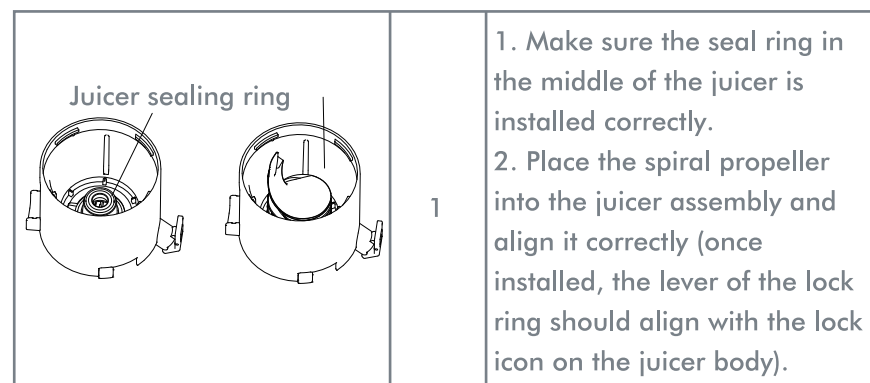
Before using the product for the first time, thoroughly clean the parts that come into contact with the ingredients. (See "Chapter 5 Care and Maintenance")

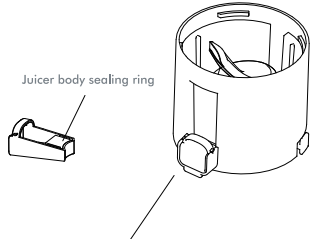
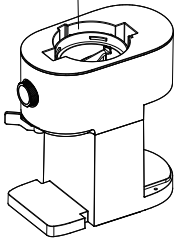

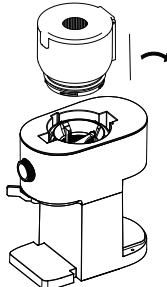


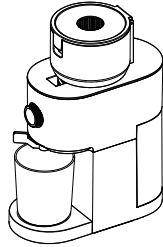
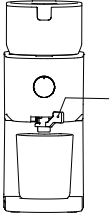
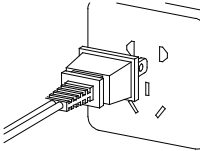
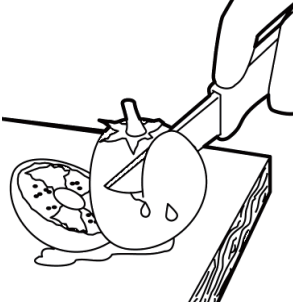
### 1. Use of the product

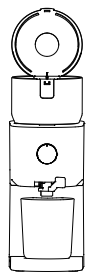
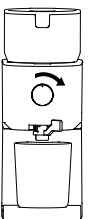
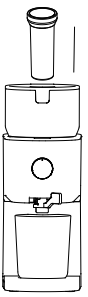
Please follow these steps to install and use the product:

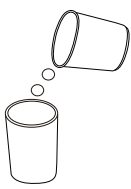
#### 1. Juice



	2	<p>1. Place the pulpy outlet silicone into the corresponding groove of the pulpy outlet component;</p> <p>2. Secure the pulpy outlet component within the juice body's pulpy outlet passage.</p>
	3	<p>Align the juicing body with the corresponding slot on the machine, then push it down until it can't go any further (if it can't reach the bottom, you can gently twist the spiral propeller to help it get there).</p>
	4	<p>Insert the juice net into the slot inside the juicer, making sure to align it properly.</p>
	5	<p>Align the four latches of the juicer lid with the four latches on the juicer body (the triangle mark on the juicer lid should align with the unlock mark on the juicer body), push it downward, and then twist it clockwise to securely fasten the juicer lid to the juicer body (the triangle symbol on the juicer lid should align with the lock symbol on the juicer body).</p>

	6	<p>1. "Check if the juicer cup holder has been properly installed on the main unit.</p> <p>2. Position the juice cup and the pulp cup at the corresponding places on the unit, ensuring that their openings align directly under the juice spout and pulp outlet, respectively.</p>
	7	<p>ACheck if the juice outlet of the juicer is in the open position (this can be done by rotating the lever to the far right, causing the juice outlet cover to be in the open state).</p>
	8	<p>Power up, ready for work. (Please ensure the switch is off before powering up.)</p>
	9	<p>Rinse off the fruit and vegetables, and cut them into pieces that can fit into the feeding chute. For fruits and vegetables with pits, hard seeds, thick skin or hard shells, please remove these first. Please note, sugarcane, passion fruit, pomegranate, mango, lemon and similar fruits cannot be juiced using this machine.</p>

	10	<p>Open the lid, place the chopped ingredients into the juicer's body cavity (even with the lid closed, you can still insert the food through the small circular hole in the middle).</p>
	11	<p>Turn the power switch (align the indicator slot on the switch surface with the "ON" position), the product starts to operate, and the operating time is <math>\leq 10</math> minutes. Do not touch the power switch with wet hands to avoid electric shock, leakage, and fire.</p>
	12	<p>To accelerate the juicing speed, you can use the push rod to insert the ingredients. When pushing ingredients, please don't exert excessive force. (Never put your fingers or any other objects into the feeding tube on the juicer cover! If the pulp cup or juice cup is full, stop operation, clean it, and then use it again.)</p>

	13	<p>When the ingredients are thoroughly processed and no more juice is coming out of the juice extractor, switch the power to the '0' setting. The motor will first stop, then it will automatically reverse for 1 second. Please wait until the auger completely stops rotating, then twist the rod to cover the juice outlet, and finally, you can remove the juice cup from the juice outlet. Drinking freshly juiced juice immediately is recommended as exposing it in the air for a period of time could affect its taste and nutritional value. Any waste should not be stored for long. Remember not to touch the power switch with wet hands, this is crucial in avoiding electrical shock, leaks, and potential fires.</p>
---	----	---

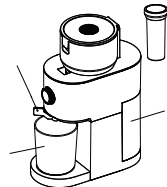


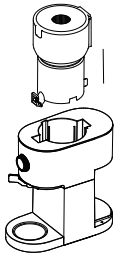
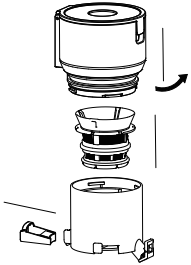
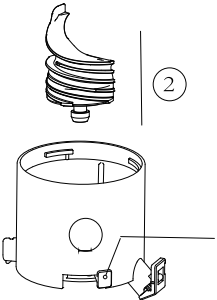
2.Fruit selection tips

- 1. Opt for fresh fruits and vegetables: they contain more juice. Particularly suitable ones include celery stalks, apples, watermelons, pears, carrots, oranges, and tangerines, among others.
- 2. There's no need to peel thin-skinned fruits and vegetables, you just need to remove the thicker peels from ones like tangerines and watermelons. Remember to remove the seeds from citrus fruits as they can add bitterness to the juice.
- 3. When juicing apples, the concentration of the juice depends on the type of apple selected; using juicier apples gives a more clear juice, so choose your apple type according to the juice consistency you prefer.
- 4. Freshly squeezed apple juice tends to turn brown quickly; to slow down this process, you can add a few drops of lemon juice.

care and maintenance

- 1. Make sure to turn off the switch and unplug before cleaning the product.
- 2. Please wash the product promptly after use.
- 3. The machine should not be washed with water. Stains must be wiped clean with a cloth or cotton cloth that has been wrung out dry.
- 4. Before storing the product, ensure that it is clean and dry.
- 5. Please follow these steps for disassembly before cleaning:

	1	1. Rotate the lever to the far left to close the juice outlet. 2. Remove the plunger, juice cup, and pulp cup.
---	---	---

	2	Remove the juice body and the juice body lid component from the machine together.
	3	Next, sequentially remove the juicer lid, juice net, and pulp outlet parts. Each detachable part can be rinsed clean with fresh water.
	4	Align the lock ring lever to the unlock icon on the juicer body with one hand, then use the other hand to pull the auger, causing it to separate from the juicer body.

## Product Safety Indicators

Rated voltage	120V~
Rated Power	100W
Rated frequency	60Hz
continuous working time	≤15 minutes
Intervals	≤45 minutes

## Adopt standards

**USA Standard: UL982 and CSA C22.2 NO. 1335.1&1335.2.14**

## Failure analysis and troubleshooting

Fault phenomenon	Cause Analysis	troubleshooting
After powering on and flipping the switch, the product doesn't work.	1. The power plug is not properly inserted. 2. The power outlet has poor contact. The internal wires of the main console have fallen off or the circuit board is damaged.	1. Replug the power cord properly. 2. Try using a different power outlet. 3. Please take it to the nearest after-sales service center for inspection.

Fault phenomenon	Cause Analysis	troubleshooting
When first using the product a few times, the motor gave off an unpleasant smell.	This is not an anomaly.	If after multiple uses the product still gives off this odor, please take it to the nearest service center for inspection.
Shut down during use	1. Voltage is too low. 2. Too much or too hard ingredients. 3. Machine has been used for too long.	1. Check if the voltage is too low. 2. Disconnect the power and remove any excess ingredients (do not crush sugarcane, remove the hard skin/cores from fruits or vegetables before juicing). 3. This is normal - the motor will resume operation after a rest period.
Noise while working	1. The spiral propeller and juice net are not properly installed, causing unstable operation during working. 2. The starter motor inside the machine body is damaged. It makes a lot of noise when juicing certain ingredients.	1. Install the spiral propeller and juice net correctly. 2. Please take it to the nearest after-sales service point for inspection. The friction noise from the ingredients themselves is normal.

Fault phenomenon	Cause Analysis	troubleshooting
It is difficult to unscrew the juicer body cover after juicing	1. There are oil stains on the surface of the juicer lid; 2. There's unprocessed food left inside the juicer.	1. Clean the surface of the juicer cover; 2. Keep the machine on to finish juicing the ingredients or turn the power switch to REV for a few seconds to spin the ingredients out from the juicer body.
Juicing components are difficult to remove	1. Power outage occurred during the operation of the motor; 2. The flip lid was opened during the juicing process; 3. The motor stopped running due to long-term overheating protection.	1. Wait for the power to be restored, turn the knob to the 0 or REV gear. After the spiral propeller reverses for a few seconds, you can normally disassemble the juicing component. 2. Close the flip cover, turn the knob to the 0 or REV gear. After the spiral propeller reverses for a few seconds, you can normally disassemble the juicing component. 3. Let the host rest for about 50 minutes, until the motor can operate. Then turn the knob to the 0 or REV gear. After the spiral propeller reverses for a few seconds, you can normally disassemble the juicing component.

## Recipes

### Grapefruit-Lime-Ginger

Makes 1 serving

#### Ingredients

1 large grapefruit, peeled and cut into quarters

¼ lime, peeled and halved

1 ½-inch piece ginger

#### Method

1. Open the juice and pulp spouts.
2. Turn the juicer to the ON position and process all ingredients.
3. When juicing is complete and no more juice flows from the outlet, turn the switch to the "0" position
4. Stir and drink immediately, preferably over ice.

### Orange PLUS Juice

Makes 2 servings

#### Ingredients

1 medium orange, peeled and cut into quarters

3 carrots

1 large grapefruit, peeled and cut into quarters

1 ½-inch piece ginger

1 quarter-inch piece turmeric root

¼ lemon, peeled and halved

#### Method

1. Open the juice and pulp spouts.
2. Turn the juicer to the ON position and process all ingredients.
3. When juicing is complete and no more juice flows from the outlet, turn the switch to the "0" position
4. Stir and drink immediately.

### **PineApple Refresh**

Makes 2 servings

#### **Ingredients**

1 medium green apple, cut to fit the feed tube 3 – 4 tablespoons mint (be sure mint is bunched together between two harder items, like the apple and pineapple)

¼ pineapple, peeled and cut to fit the feed tube, if necessary

¼ lemon, peeled and halved

#### **Method**

1. Open the juice and pulp spouts.
2. Turn the juicer to the ON position and process all ingredients.
3. When juicing is complete and no more juice flows from the outlet, turn the switch to the "0" position
4. Stir and drink immediately.

### **Bright Apple Juice**

Makes 2 servings

#### **Ingredients**

2 medium green apples, cut to fit the feed tube

¼ lemon, peeled and halved

1 ½-inch piece ginger

Cayenne (optional), a pinch or more based on personal preference

#### **Method**

1. Open the juice and pulp spouts.
2. Turn the juicer to the ON position and process all ingredients except the cayenne.
3. When juicing is complete and no more juice flows from the outlet, turn the switch to the "0" position
4. Add the cayenne, if using, and then stir and drink immediately.

### **Green Medley**

Makes 2 servings

#### **Ingredients**

4 stems kale, tough bottom stems removed

1 cup packed spinach (baby or not)

4 celery stalks, each cut into thirds

½ medium cucumber, halved lengthwise

¼ lemon, peeled

¼ cup fresh parsley leaves and stems, optional

Pinch sea salt, optional

#### **Method**

1. Open the juice and pulp spouts.
2. Turn the juicer to the ON position and process all ingredients, except for the salt.
3. When juicing is complete and no more juice flows from the outlet, turn the switch to the "0" position
4. Add the salt, if using, stir and drink immediately.

### **Veggie Pick-Me-Up**

Makes 1 serving

#### **Ingredients**

2 medium to large carrots

¼ cup packed parsley

1 cup packed spinach

½ large beet, cut to fit the feed tube

½ orange, peeled and halved

¼ lemon, peeled

#### **Method**

1. Open the juice and pulp spouts.

2. Turn the juicer to the ON position and process all ingredients, in the order listed.
3. When juicing is complete and no more juice flows from the outlet, turn the switch to the "0" position
4. Stir and drink immediately.

### **Sweet Zinger**

Makes 2 servings

#### **Ingredients**

- 2 medium to large carrots
- 1 beet, cut to fit feed tube
- 1 apple, cut to fit feed tube
- 1 ½- to 1-inch piece ginger, based on personal preference

#### **Method**

1. Open the juice and pulp spouts.
2. Turn the juicer to the ON position and process all ingredients.
3. When juicing is complete and no more juice flows from the outlet, turn the switch to the "0" position
4. Stir and drink immediately.

Nutritional information per

### **Apple-Berry Juice**

Makes 2 servings

#### **Ingredients**

- 1 apple, cut to fit the feed tube
- 1 ½ cups strawberries

#### **Method**

1. Open the juice and pulp spouts.
2. Turn the juicer to the ON position and process all ingredients.
3. When juicing is complete and no more juice flows from the outlet, turn the switch to the "0" position
4. Stir and drink immediately.

## **Specifications**

### **Product Name**

- Model Name
- Rated Voltage
- Rated Power Consumption
- Rated Frequency
- RPM
- Rated Operating Time
- Intervals

### **SiFENE Whole Slow Juicer**

- AMR8301
- 120V-
- 100W
- 60Hz
- 40-60rpm
- Less than 15 minutes
- More than 40 minutes  
(To protect the motor)

# Warranty



## 2 Years Limited Warranty

Motor: **2**-year warranty.

Normal accessories: 2-year warranty.

With lifelong technical support and  
24/7 customer service

## Warranty and Service

Default 24-Month Warranty

Thanks for choosing **SiFENE** Juicer. This product is covered with **SiFENE** product and labor warranty for 24 months from the date of its original purchase.

## What does this warranty cover?

If you're happy with this juicer, the line doesn't stop here. Check out <https://sifene.com/> for a line of all our beautiful and thoughtfully designed appliances. They might be right at home in your kitchen, too!

## What does the warranty not cover?

This warranty does not cover:

Improper use or installation

Cosmetic damage

Damage due to acts of nature. For example: lightning strikes, tornadoes and similar

Accidents

Misuse

Negligence

Commercial use

Modifications to any part of the product, including the antenna

Connection to an incorrect voltage supply

Attempted repair by anyone other than an authorized facility