

Smart Handles

Product Manual

Safety Precautions

1. It is recommended to use an adapter with an output of 5V/2A when charging the handles.
2. Before charging, be sure to check if there are lint, water, or other foreign objects near the socket. Clean the area thoroughly before inserting, as failure to do so may lead to fire, electric shock, or a short circuit.
3. During charging, please avoid placing the device in high-temperature or direct sunlight areas. After charging is complete, promptly remove the charger to prevent overcharging and potential accidents.
4. Do not charge the product for an extended period without supervision. The maximum charging time should not exceed 12 hours. If left unused for a long time, please charge it to full capacity at least once every six months.
5. Please charge the product under the environment between 5°C and 35°C. Store this product within the range of -20°C to +45°C.
6. If any abnormal things occurred during charging or usage (such as unusual odors or sounds), immediately cut off the power and stop usage.
7. Please do not rub the button violently, If there is any malfunctions of the smart handles or the adjustment system, please stop using it and contact Speediance Aftersales immediately.
8. Any attempt to disassemble or modify the product or damage the electronic components, such as the circuit boards, is strictly prohibited. All repairing & maintenance operations must be conducted by experts. If the power cord is damaged, it must be replaced through official channels to prevent any potential hazards.



Away from
Flammable Materials



No Rinsing with Water



Away from Open Flames

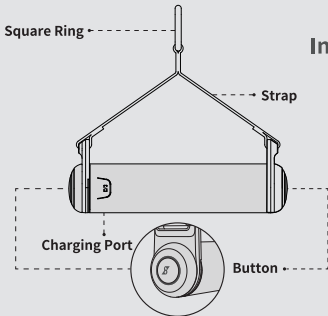


Away from Children



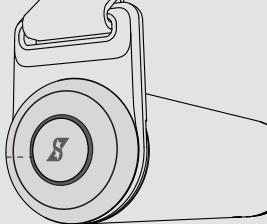
No Faulty Power

Basic Information



Product Name	Smart Handles
Product Dimensions	14.5*3.2*5cm
Bluetooth Parameter	Bluetooth 5.0
Battery Parameter	3.7V 480mAh

Indicator • - - - - -



Condition of Device	Indicator's Light
Normal Battery	White Light
Low Battery	Red Light
Disconnected	Flashing Light
Charging	Orange Light when not being fully charged, White Light when being fully charged

How to Connect

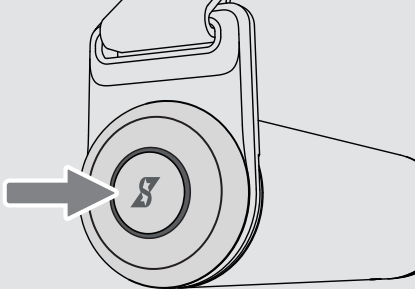


- 1 press the button
- 2 Insert the square ring into the ball connector



- 1 press the button
- 2 Detach the square ring from the ball connector





Awake Your Handles

Single click on the side button to awake the handles



Bluetooth Connection/ Disconnection

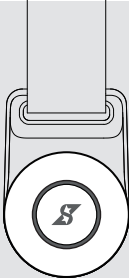
When the indicator flashes, you can search it on a Speediance machine or via the companion App.

The indicator flashes when the Bluetooth is disconnected.



How to Use

Single-click or double-click (modifiable via software) to control the weight switch

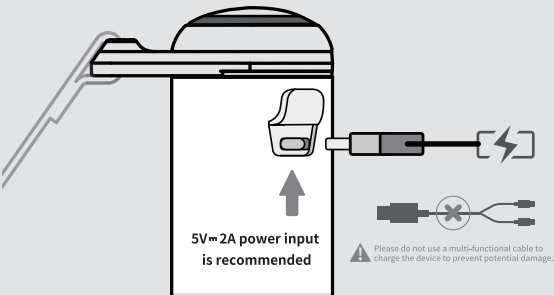


Sleeping Mode

Automatically disconnect Bluetooth after 120 seconds of null response.

How to Charge

Red flashing light indicates immediate charging!
Charge it with the Type-C cable which is included
in the package.



Warranty card

Name		One-year Warranty	
Address			
Tel			
Purchase Date			
<p>When you purchase the product, please fill in the warranty card immediately, stick the invoice on the back of the warranty card and keep them properly. Please show the maintenance card and the purchase invoice for maintenance.</p> <p>1. Under the condition that user operates the product normally in strict accordance with the instructions herein, Speediance provides free maintenance service within one-year warranty period, which starts from the date that the product is purchased.</p> <p>2. If the product is out of warranty period as described above, and needs a replacement of the accessories, a rational maintenance fee will be charged.</p> <p>3. The warranty does not cover:</p> <ul style="list-style-type: none">a. product with no purchase or warranty certificate (warranty card) availableb. product out of warranty periodc. product disassembled or maintained by personnel unauthorized by SPEEDIANCEd. damage caused by misuse, negligence or improper handling by usere. product damaged or malfunctioning due to non-typical household use (such as prolonged use in harsh environments)f. products that naturally exhibit signs of wear and tear due to usage <p>For details on the warranty policy, please refer to the after-sales warranty policy on the Speediance official website.</p>		Signature of Distributor	