

Preface

Thank you for purchasing our products!

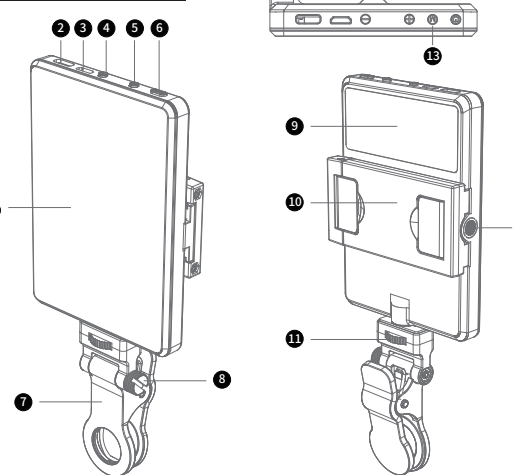
This is an ultra-thin fill light, which is compact and convenient to use. This product can be used for fill light in mobile phones and laptops, with a variety of color temperature/brightness adjustable,Built-in 3000mAh battery can provide about 2 hours of continuous lighting.

※Please read this manual carefully before use, and keep it for future reference after reading.

Matters needing attention

1. This fill light does not have waterproof and dustproof functions.
2. Do not let this fill light be strongly impacted.
3. Do not look directly at the light-emitting surface of the fill lamp in use for a long time in a static distance, or it may damage your vision.
4. After charging, unplug the power cord.
5. After not using this product for a long time, the battery should be fully charged before using this product again, otherwise it may lead to no power and unable to start.
6. In order to extend the service life of the battery, it is recommended to charge and maintain it every three months.
7. This product has a built-in rechargeable lithium battery, which has a certain life limit. After a certain period of use, the performance will be reduced, which is a normal phenomenon.

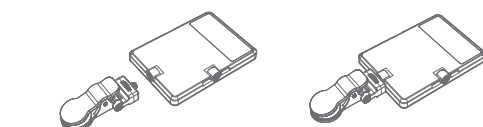
1. Product introduction



2. Product installation

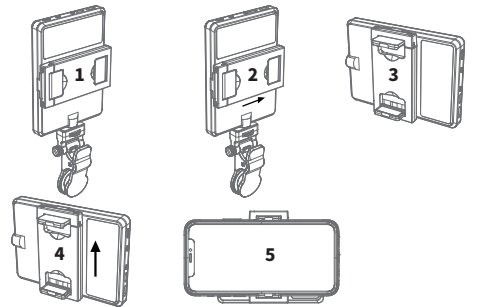
Fixing clip 1

It is fixed through 1/4 screw hole and can be fixed by screwing the knob.
(Compatible with other accessories linked by 1/4 screw)



Fixing clip 2

1. First install the single leg of the fixing clip into the slot on the back of the fill lamp
2. Then push the fixing clip towards the direction of both feet until the two feet of the fixing clip are also installed in the slot of the fill lamp
3. Screw out the mobile phone mounting base of fixing clip 2
4. Place the mobile phone in the direction as shown in the figure



3. Function and display

CL-V11

ON/OFF

Press and hold the power button for 3 seconds, and the fill light will turn on. Press and hold the power button again for 3 seconds to turn off the light.

Parameter settings

Briefly press the "M" button to Toggle color temperature/brightness options.Use the "+" "/" "-" buttons to adjust the parameter values.

Charge

When using Type-c or Micro-usb interface to charge, the battery indicator will flash in flowing water.When the indicator is no longer flashing, it means that the charging is completed.

CL-V11SE

ON/OFF

Press and hold the power button for 3 seconds, and the fill light will turn on. The default is white light mode.Press and hold the power button again for 3 seconds to turn off the light.

Mode switching

Briefly press the power button to switch between warm light, cold light and white light, .

Brightness adjustment

In any mode, use the "+" "/" "-" keys to adjust the brightness, which can be adjusted by 10 levels.

Charge

When using Type-c or Micro-usb interface to charge, the battery indicator will flash in flowing water.When the indicator is no longer flashing, it means that the charging is completed.

4. Specifications

Model	CL-V11		
Colour	2500K-9000K (±200K)		
Brightness	0-100%		
LED Qty	60pcs		
illuminance (lux)	2500K	4500K	9000K
distance	0.3m	900	1200
	0.5m	350	500
CRI	≥95		
TLCI	≥97		
Battery	3.7V 3000mAh (11.1Wh)		
Power	5W		
Duration	About 1.5 hours		
Input	5V/1A		
Charging port	Type-C/Micro-usb		
Fixed interface	1/4 screw hole, retaining clip 1, retaining clip 2		
Size	104*75*11.8mm		
Weight	About 140g		
Accessories	LEDlight*1, Type-C charging cable*1, fixing clip 1, fixing clip 2		

The specifications and parameters of this product are tested in accordance with the company's laboratory samples. The finished product may have some differences ,which will not affect the normal use; if the design and specifications changed will not prior notice.

Model	CL-V11SE		
Colour	2500K/4500K/9000K (±200K)		
Brightness	10 levels adjustable		
LED Qty	60pcs		
illuminance (lux)	2500K	4500K	9000K
distance	0.3m	900	1200
	0.5m	350	500
CRI	≥95		
TLCI	≥97		
Battery	3.7V 3000mAh (11.1Wh)		
Power	5W		
Duration	About 1.5 hours		
Input	5V/1A		
Charging port	Type-C/Micro-usb		
Fixed interface	1/4 screw hole, retaining clip 1, retaining clip 2		
Size	104*75*11.8mm		
Weight	About 140g		
Accessories	LEDlight*1, Type-C charging cable*1, fixing clip 1, fixing clip 2		

The specifications and parameters of this product are tested in accordance with the company's laboratory samples. The finished product may have some differences ,which will not affect the normal use; if the design and specifications changed will not prior notice.

Model	CL-V11R		
CCT	2500K-9000K (±200K)		
Brightness	Brightness adjustment range:0-100%		
LED Qty	RGB:30pcs BI: 48pcs		
illuminance (lux)	Warm light	Cold light	Red
distance	0.3m	900	1000
	0.5m	350	400
CRI	≥95		
TLCI	≥97		
RGB (HSV)	0-359 (Full color)		
Special effect	24 kinds		
Battery	3.7V 3000mAh (11.1Wh)		
Power	5W		
Duration	About 1.5 hours		
Input	5V/1A		
Charging port	Type-C/Micro-usb		
Fixed interface	1/4 screw hole, retaining clip 1, retaining clip 2		
Size	104*75*11.8mm		
Weight	About 140g		
Accessories	LEDlight*1, Type-C charging cable*1, fixing clip 1, fixing clip 2		

The specifications and parameters of this product are tested in accordance with the company's laboratory samples. The finished product may have some differences ,which will not affect the normal use; if the design and specifications changed will not prior notice.