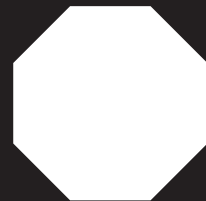


PREDATOR®

26677 Agoura Road • Calabasas, CA 91302 • 1-800-444-3353



**Check total Start-up watts amount
before plugging in any equipment.**

Check total Start-up watts amount before plugging in any equipment.

To check the wattage amount:

1. Add up the Running Watts for all items you would like to use at any given time.
2. Make sure this total is under the 7800 (NG), 9100 (LPG), or 10,000 (gasoline) rated generator wattage.
3. Find the single highest starting watts for the selected items and add to the total.
4. Make sure total is under the 10,000 (NG), 12,000 (LPG), or 13,000 (gasoline) maximum rated generator wattage.
5. Plug in and turn on products from largest wattage to smallest.

Typical Product Watts

Check your appliance for actual ratings.

WATTAGE ESTIMATE CHART

EMERGENCY		
DEVICE	RUNNING WATTS	ADDITIONAL START-UP WATTS
Refrigerator / Freezer	700	1500
Radio	100	0

HOUSEHOLD		
DEVICE	RUNNING WATTS	ADDITIONAL START-UP WATTS
Computer w/ Monitor	800	0
Electric Clothes Dryer	5500	500
Electric Range	2100	0
Electric Water Heater	2000	0
Light Bulb - 100 Watts	100	0
Microwave - 1000 Watts	1000	200
Sump Pump - 1/2 HP	1000	1100
Television - 27"	400	0
Washing Machine	1100	1100
Well Pump - 1/2 HP	1000	1000

JOB SITE		
DEVICE	RUNNING WATTS	ADDITIONAL START-UP WATTS
Air Compressor - 1/2 HP	1000	1000
Table Saw - 10"	1700	1300
Belt Sander - 3"	1200	1200
Hand Drill - 1/2"	600	600
Halogen Work Light	1000	0
Reciprocating Saw	900	900

LAWN & GARDEN		
DEVICE	RUNNING WATTS	ADDITIONAL START-UP WATTS
Hedge Trimmer	400	400
Pressure Washer	1200	1200
Lawn Mower	1200	1200
Edger	1000	1000

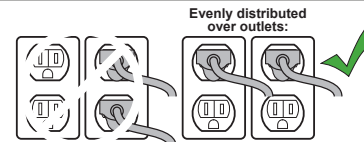
Note: Wattage listed are estimates for that type of equipment only.
Check nameplate wattages on all loads before connecting to generator.

RECREATION		
DEVICE	RUNNING WATTS	ADDITIONAL START-UP WATTS
AM/FM Radio	100	0
Electric Grill	1700	0
Inflator Pump	50	100
CD/DVD Player	100	0
Box Fan - 20"	200	200
Coffee Maker	600	0

HEATING & COOLING		
DEVICE	RUNNING WATTS	ADDITIONAL START-UP WATTS
Central AC - 10,000 BTU	1500	3000
Furnace Fan - 1/2 HP	900	1400
Space Heater	1800	0
Window AC - 10,000 BTU	1200	600

IF ANY CIRCUIT BREAKERS TRIP:

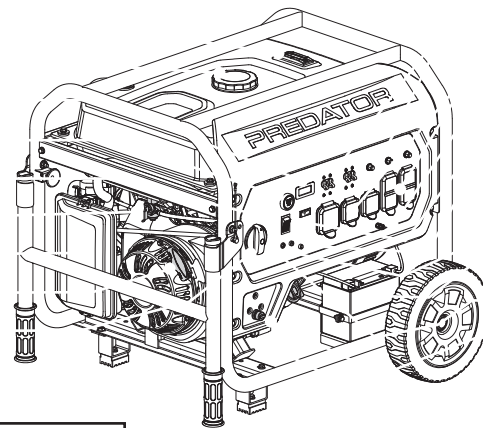
1. Make sure that **ALL circuit breakers** are reset before starting the generator again.
2. Adjust the plugs so the loads are shared across outlet circuits.



7800 / 9100 / 10,000 13,000 72860
RUNNING WATTS NATURAL GAS RUNNING WATTS LPG-PROPANE RUNNING WATTS GASOLINE MAX STARTING WATTS GASOLINE

Generator Components

- A.** Fuel Gauge
- B.** Fuel Cap
- C.** Digital Display
- D.** Engine Start Switch
- E.** Power Switch
- F.** Gasoline Valve
- G.** Air Filter
- H.** Starter Handle
- I.** Fuel Selector Switch



- J.** AC Circuit Breakers
- K.** AC Receptacles
- L.** Ground Terminal
- M.** ESC Switch
- N.** CO Sensor Light
- O.** Battery Charging Port
- P.** Battery
- Q.** Low Oil Alarm
- R.** LPG/NG Inlet
- S.** Oil Drain Plug

⚠WARNING

To prevent serious injury:
READ MANUAL BEFORE USE.

BEFORE USING:

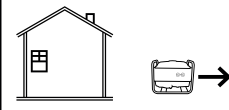
Position generator outside and unplug all electrical loads

⚠ DANGER

Using a generator indoors **CAN KILL YOU IN MINUTES**. Generator exhaust contains carbon monoxide. This is a poison you cannot see or smell.



NEVER use inside a home or garage, **EVEN IF** doors and windows are open.



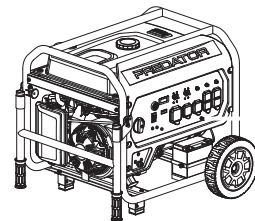
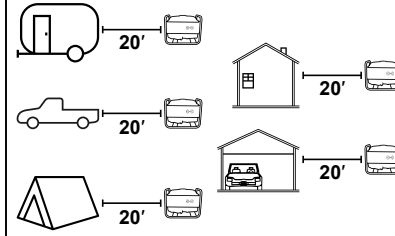
Only use **OUTSIDE** and far away from windows, doors, and vents.

⚠ DANGER

Do not use in trailers, truck beds, or tents.

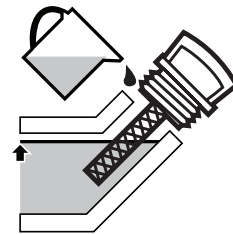


Use at least 20 feet away from people, animals, and structures with exhaust pointed away.

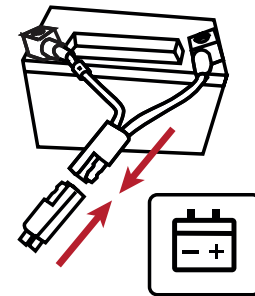


GROUND GENERATOR TO PREVENT ELECTRIC SHOCK

Add oil to engine crankcase

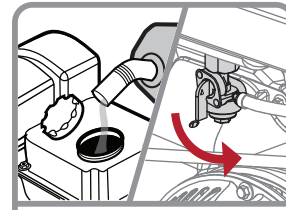


WITHOUT OIL GENERATOR WILL NOT START



Connect 12V Battery

Gasoline Starting Procedure



Use regular Unleaded 87 Octane gasoline. **E85 Ethanol blend will damage engine.**

ADD TREATED FUEL OPEN FUEL VALVE

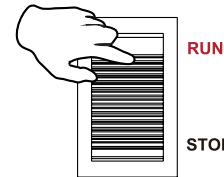
OFF/STORAGE



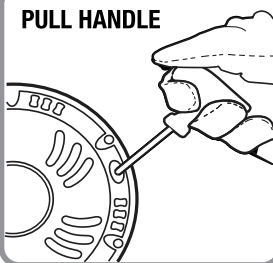
NG
GASOLINE
PROPANE

SELECT GASOLINE

POWER SWITCH

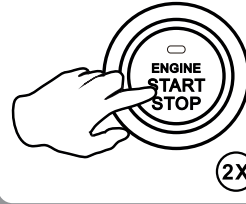


PUSH SWITCH TO RUN



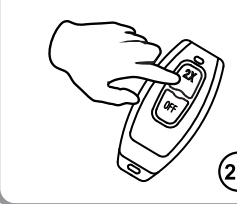
MANUAL START

PRESS TWICE SLOWLY



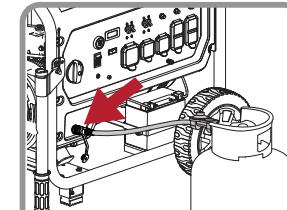
ELECTRIC START

PRESS TWICE SLOWLY



REMOTE START

LPG/Propane Starting Procedure



Make sure connections are secure

CONNECT PROPANE TANK – OPEN VALVE

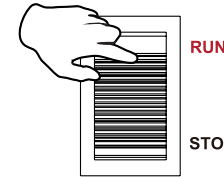
OFF/STORAGE



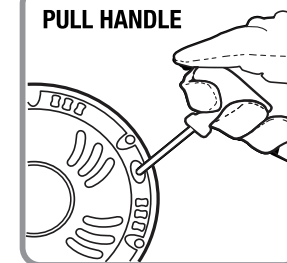
NG
GASOLINE
PROPANE

SELECT LPG/PROPANE

POWER SWITCH

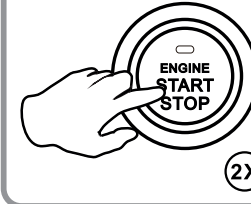


PUSH SWITCH TO RUN



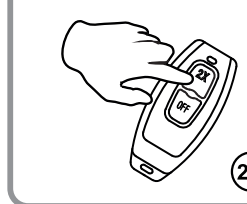
MANUAL START

PRESS TWICE SLOWLY



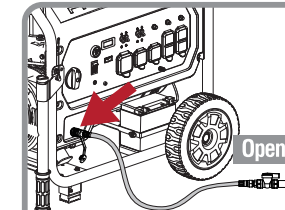
ELECTRIC START

PRESS TWICE SLOWLY



REMOTE START

Natural Gas Starting Procedure



Make sure connections are secure

CONNECT NG SOURCE OPEN VALVE

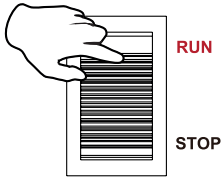
OFF/STORAGE



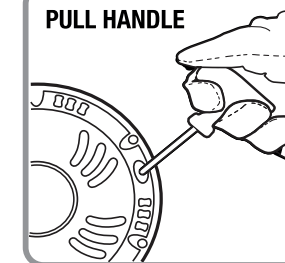
NG
GASOLINE
PROPANE

SELECT NG

POWER SWITCH

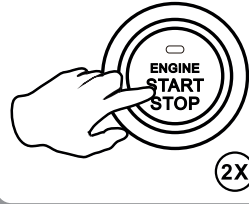


PUSH SWITCH TO RUN



MANUAL START

PRESS TWICE SLOWLY



ELECTRIC START

PRESS TWICE SLOWLY



REMOTE START