

Hidden Camera - User Manual



Content:

Chapter 1: Important note	1
Chapter 2: Product view	2-3
Chapter 3: How to set up the WiFi	4-6
Chapter 4: Basic APP interface Introduction	7
Chapter 5: Camera setting instruction	8-11
Chapter 6: Frequent QA	12-14
Chapter 7: Light indicator	15

Due to the complexity of electronic device, some people may have some confuse during the use, if the device isn't working properly it doesn't mean it's broken, it's probably not operating properly. If you have any inquiries or questions, please feel free to reaching us, we will provide the service.

Important Note :

1. Please read the manual before set up the camera, it will help you a lot and saving your times
2. Please fully charge your camera before first use
3. The camera can only be set up with 2.4g Wi-Fi network. (But you can use access live stream with 4G/5G network once you set it up with 2.4g first)
4. Please format the Micro SD card to FAT32 format and install that when powered off (Card Not Included)
5. Ensure the phone, router and camera is close enough when you're ready to pair them. (the Wi-Fi signal should be strong enough)
6. Reset can solve most of the problems well. (press and hold the reset for about 10 seconds, and then see the lights through the hole flashing to indicate that the reset is successful)
7. It's normal for the camera to get hot, like some of the phone does

Product View:



1. **SD Card Solt-1 (Music Play)** : Play music files
2. **SD Card Solt-2 (Video Record)** : Save video files

3. **WiFi/Clock Power:** The power of the clock and device WiFi, clock on means WiFi on. (On the power, the clock wait about 20 seconds to show up)
4. **USB Port:** Charge the device
5. **Reset Button:** Long press to reset the device. (Press and hold for at least 10 seconds until the light flashes indicating a successful reset)
6. **Bluetooth ON/OFF&Pause:** Long press to turn on/off Bluetooth feature. (If you use card to play music, you also need to turn on the feature. If you want play via Bluetooth, do not insert a card to music card slot)
7. **Up/V+:** Long press to turn down, short press to move previous
8. **Down/V-:** Long press to turn up, short press to move next
9. **Charging Light/ Bluetooth Light:** Red light blinking while charging, keeps on while fully charged. Green light is blinking when turn on Bluetooth, light will staying on once connects successfully
10. **WiFi Indicator Light:** You can see a blue Wi-Fi indicator light via SD Card slot-2

Set Up Camera to WiFi:

Please locate the “ HomeEye ” in your Google Play store/Apple Store or scan the QR code to download. (For working correctly, please allow all tips when you launch the app for the first time)



【WiFi Set Up Method-1】

1. Firstly, turn on the device WiFi, wait about half minutes or longer then found the wifi signal in the phone setting, connect phone to camera Wi-Fi name starting with “AYS-xxx” or “XYX-xxx”.

(Note: If the camera wifi can't be found: 1、 Make sure the device is fully charged or keep it connected the

power, low battery will cause camera WiFi can't be detected. 2、Reset the camera)

2. When camera WiFi is connected, then launch the App “HomeEye”. You will see that the camera is now online, wait a seconds, app will pops up a tip saying that “Whether the device added by the AP is equipped with a network (AYS-xxx)”. Click “Ok” then going to the next step.
3. Wait a seconds, the app “WIFI Settings” will pops up, then choice the home network you wanna connected. (If the WIF list won't shown, click “refresh” button to refresh the Wi-Fi list)
4. A few seconds later, it will set up successful and return back the the main page. Now you can remote living streaming via app.
5. In Android system, it may claim that “Internet unavailable”, In IOS system, it may claim that “Unsecured Internet”. Just ignore these message.
6. We also have video in product page to show how to set it up, very easy and intuitive tutorial;

【WiFi Set Up Method-2】

1. Launch your app, click “+” button on the top of right.
2. Choice “AP distribution network”. Click “Go to WiFi configuration”, then connect phone to the camera Wi-Fi name starting with “AYS-xxx” or “XYX-xxx”, this is the camera’s WiFi. When it done, then go back the app page, you will found out the camera is “Online”.
3. Wait a seconds, the app “WIFI Settings” will pops up, then choice the network that you wanna connected. (If the WIF list won’t shown, click “refresh” button to refresh the Wi-Fi list)
4. A few seconds later, it will set up successful and return back the the main page. Now you can remote living streaming via app.
5. In Android system, it may claim that “Internet unavailable”, In IOS system, it may claim that “Unsecured Internet”. please ignore these message.

Kind Remind:

1. The password of the camera is 6666;
2. At any time if there is a problem with the device

working, you can reset the device to make it work again, then wait for 30 seconds, until all settings of the device are reset, in this case, you need to set up the remote view again. And meanwhile, you will find the camera wifi in phone WLAN setting again if you lost it in before set up.

Basic APP interface

Introduction:

Modify access password

1. Tap your camera to enter Live View. Please tap “Sure” button to change access password. No one can access to your camera unless someone knows your password.

Set: Camera settings menu

Detect: Motion detection snapshot

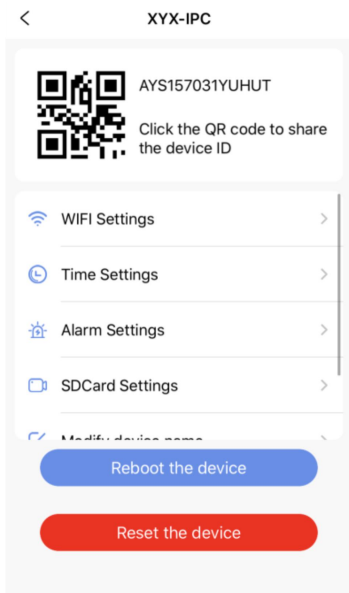
Replay: Playback videos from SD card

Delete: Delete the camera you don't wanna monitoring

Files: Playback video and photo of selected live view window

The eyes icon: App main page

Camera Setting Instructions:





- Click enter camera setting:



WIFI Settings

- Select network, remember refresh the list when you can't find the signal.



Time Settings

- You can choose the 24/8 hour format here.



Alarm Settings

1. Motion detection switch.
2. You need to enable the function if you want to set alarm push or recording.
3. Motion detection sensitivity: High /normal /low.
4. Alarm push: The camera will send a push notification to your phone when a motion is detected.
5. Alarm video duration(s): The camera will record a 10-60 seconds short video to SD card when a motion is activated.
6. Alarm time delay (s): The camera will provide a delay period of a defined amount of time to disarm the system before setting off an alarm

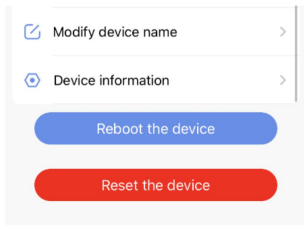


SDCard Settings

1. SD Total(M) an SD Remainder(M): You will know if your camera detects the SD card via the value. If not, please click “Format SD card” button. Then wait for a while, your camera will restart and you can check that again on this page. NOTE: Please turn off the device to insert or unplug SD card.
2. Record time: 5-30 minutes/file in Micro SD card.
3. Video stream: 720P /1080P.
4. Video mode: 1 Privacy mode: Don't record video to SD card.
5. Throughout the video: Record video to SD card all the time.
6. Alarm video: Only record video to SD card when a motion is activated.
7. Timing video: Only record video to SD card at a preset time.
8. Record audio: Record video with audio to SD card when you enable the function.
9. Video coverage: The newest files will overwrite the oldest files when the capacity of SD card is full.

(NOTE: If you enable alarm video, you need to turn

on the motion detection under Alarm settings. Otherwise the camera still record videos to the SD card.)



Modify device name

- You can set a new access password.

Device information

- **Share Your Device:**

1. Make sure your friend has downloaded app.
2. You launch app and go to your camera settings, then you will see the QR Code.
3. Launch the app on your friend's phone >> Tap “+” button on the top-right corner >> Tap “Add online device” button >> Tap “Scan QR code “ button to add your camera.

Frequent QA

1. How to reset the camera ?

- Please press and hold the “Reset” button for 10s with provided reset needle. When your camera is reset successfully, the blue WiFi indicator light through video card slot will blink slowly.

2. How to record video and to app without SD card?

- Enter the view interface. Click “Video” button to save the video files to app. Then found the “Files” button on the main page to preview. (NOTE: When you exit the view interface, will be stop save to the app, but still save to the SD card)

3. How to recording videos to the memory card and read it ?

- Once the memory card is inserted and the camera is powered on, the video is automatically recorded to the memory card. Just read the card with reader to check the video

4. How to set up to motion detection record?

- Enable **【Motion Detection】** feature, set the detected sensitivity you want (high/normal/low), set **【Alarm video duration】** and **【Alarm time delay】**, then save the setting. In **【SD Card Settings】**, set **【Alarm video】** on Video mode, save the setting. (NOTE: If you enable motion detection, but you select “ Throughout video ” or “Timing video” under video mode, the device only sends a push notification to your phone and take a photo to app.

5. How to set it up remote viewing ? (the camera is always offline)

- You need to connect the phone to the device wifi first, then connect the device to the home wifi through your phone. (Follow the guideline to set up the wifi, we have video in product page or you can reaching us directly)

- After the device is successfully connected to the home wifi, make sure your phone can access the internet normally

6. Why i can ' t get push notification even motion detection is on ?

- Ensure the “Alarm push” is enable.
- Ensure that your phone allows the app to access to phone notifications.

7. My phone can't play the recorded video or there is no sound when play the video?

- If that happened, please download “VLC Media Player” or “KM Player” to play the videos.

8. The app claim that password is incorrect, the remote viewing is unavailable

- Delete the device on app and reset your camera, then re-add the camera again

9. The camera is offline when i change new router ?

- When your router changes new password or you change new router, you need to delete your camera on app, then reset your camera and add the camera on app again.

LED Light Indicator

Red wifi indicator light blinks quickly, Blue light turns off	Network is being configured
Red wifi indicator light turn off, Solid blue wifi indicator light	Network configuration success
Red wifi indicator light blinks quickly Blue WiFi indicator light turns off	Network connection abnormal/WiFi password error
Red wifi indicator light turns off, Blue wifi indicator light blinks slowly	Reset successful
Red charging light blinks quickly	Charging
Solid red charging light	Charging finished