



Astro A50 Battery Replacement

This guide shows the user how to replace the rechargeable battery located in the Astro A50 headset.

Geschreven door: Nicholas Eriksen



INTRODUCTIE

This guide details how to replace the battery in the Astro A50 2014 headset. Because the A50's battery is a lithium-ion, it will eventually burn out after a couple years of average use. However, there's nothing to fear as a replacement battery is only \$30 and, with a soldering iron and a screwdriver, you can replace it yourself.



GEREEDSCHAPPEN:

- [Small Phillips Head Screwdriver](#) (1)
- [Soldering Workstation](#) (1)
- [Multipurpose Glue](#) (1)



ONDERDELEN:

- [Astro A50 Replacement Battery](#) (1)

Stap 1 — Battery



- To begin, remove the foam cushions from each earpiece by gently pulling the cushion away from the housing.
- Use a small *Phillips-head screwdriver* to remove the 4 screws.

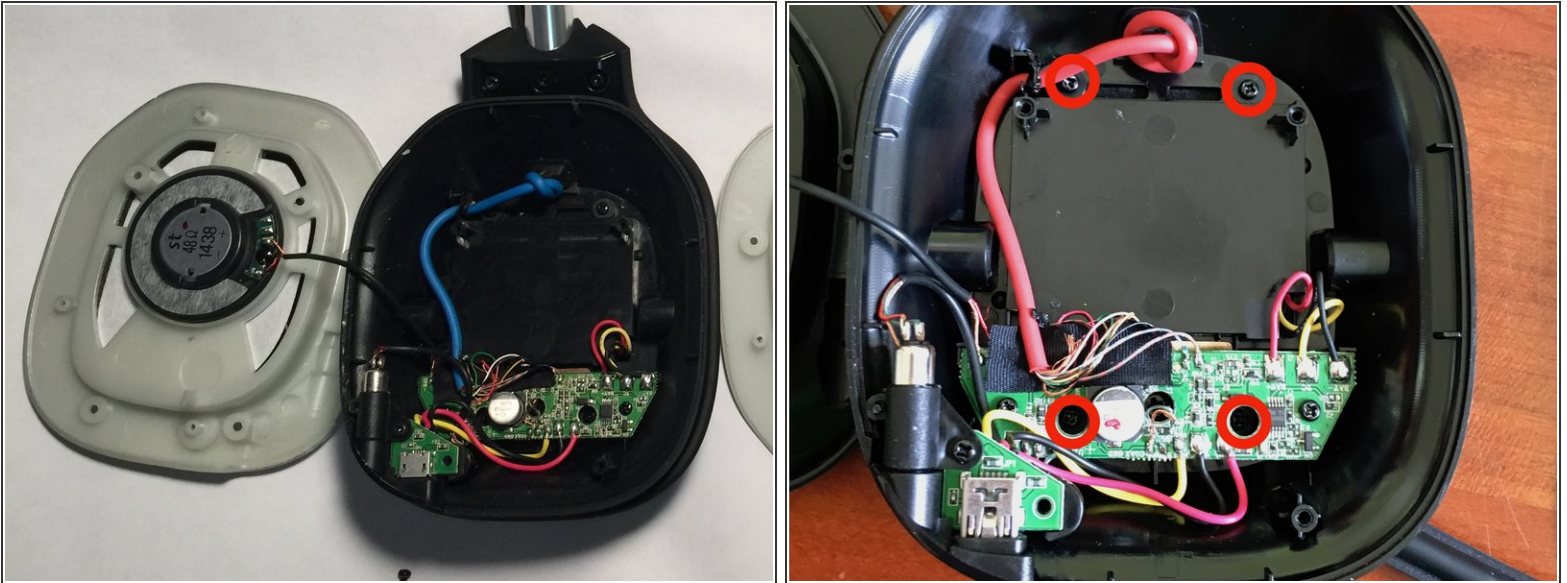
Stap 2



⚠ Take extra care when removing objects that are glued down as they are subject to tear.

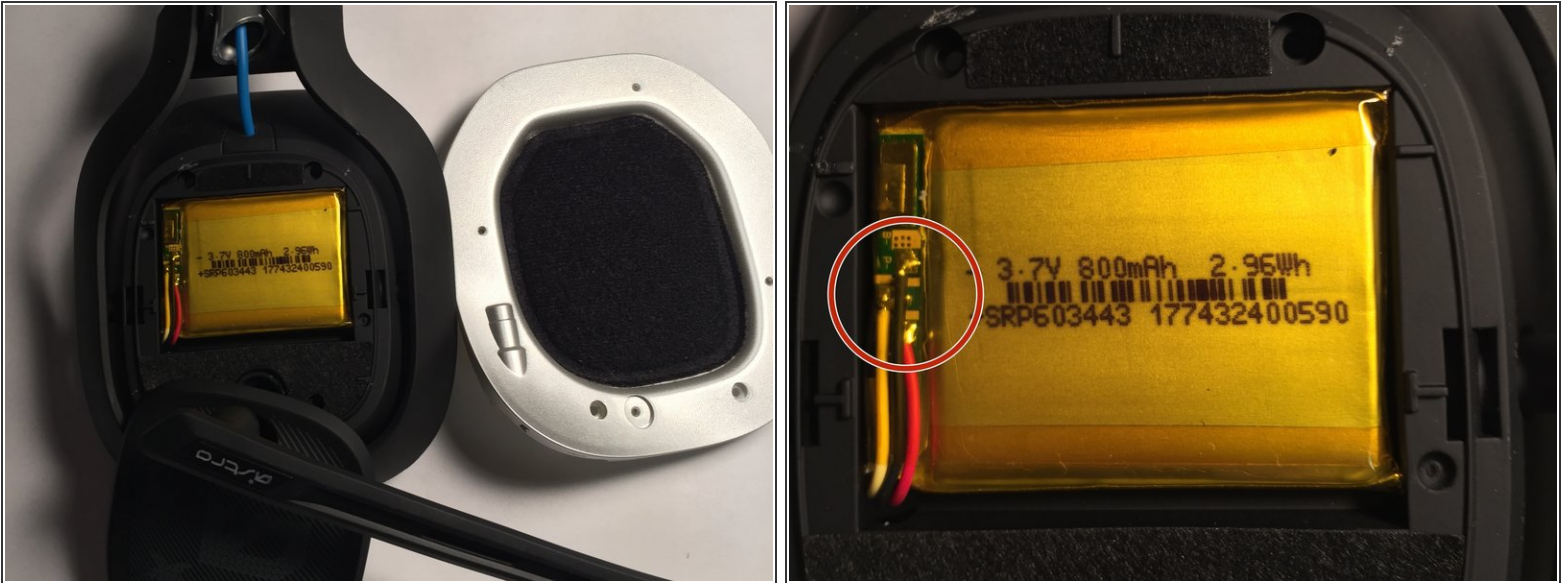
- After setting aside the black plastic covers, use the screwdriver again to remove the two screws.
- Identify the foam inner covers and peel back the upper corners of each foam to expose and remove the screws beneath.

Stap 3



- Gently fold aside the speaker assembly to expose the internals of the earpiece. Use caution to avoid damaging the black wires.
- Remove the four screws marked in red to release the faceplate on the outside of the headset.

Stap 4



- Turn the earpiece over, and expose the battery by folding the microphone and cover plate away from the battery housing.
- [Desolder](#) battery connections to disconnect the three colored wires from the old battery. Make note of corresponding colors/locations for installation of new battery.
- Carefully remove the old battery by wedging a plastic opening tool or spudger underneath the battery to release the adhesive.

 Do not bend or puncture the battery housing.

Stap 5



- For reassembly, follow steps 1-4 in reverse order:
- Take care to ensure battery wires are [soldered](#) correctly with each color on its corresponding pad.
- Use minimal amounts of adhesive to re-attach the speaker foam to avoid glue making a mess.

Be sure to test your new battery to make sure the fix succeeded.