

74" male mannequin torso dress form user guide

Features:

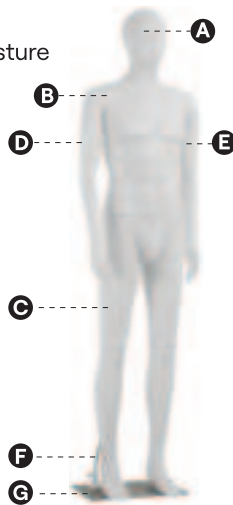
- High-Quality PP Material
- Shows Vivid Facial Expressions
- Detachable and Adjustable Dress Model
- Fits All Kinds of Clothes
- Durable and Solid Head Metal Base
- Easy to Assemble and Disassemble
- Not Necessary to Use Any Tools
- Head can Turn 360°, Switch to Any Posture
- Flexible Hands and Legs
- Stable Metal Base

What's in the Box:

- Head
- Trunk
- Hands
- Base
- Legs
- Metal Rod

Technical Specs:

- Construction Material: PFA
- Chest Size: 38" -inches
- Waist Size: 30" -inches
- Hip Size: 37" -inches
- Total Product Dimension (L x W x H): 18.89" x 21.26" x 74" - inches



Parts	Image	QTY.
A		1
B		1
C		1
D		1
E		1
F		1
G		1

visit our website



SCAN ME
serenelifehome.com

Important Safety Warnings

1. Read all instructions before assembly or use.
2. Do not use the product if any part is missing, broken, or damaged.

Replace damaged components with manufacturer-approved parts before using again.

CALIFORNIA PROP 65 WARNING

⚠️WARNING:

This product may expose you to chemicals, which is known to the state of California to cause cancer, birth defects and other reproductive harm. Do not ingest.

For more info go to: www.P65warnings.ca.gov



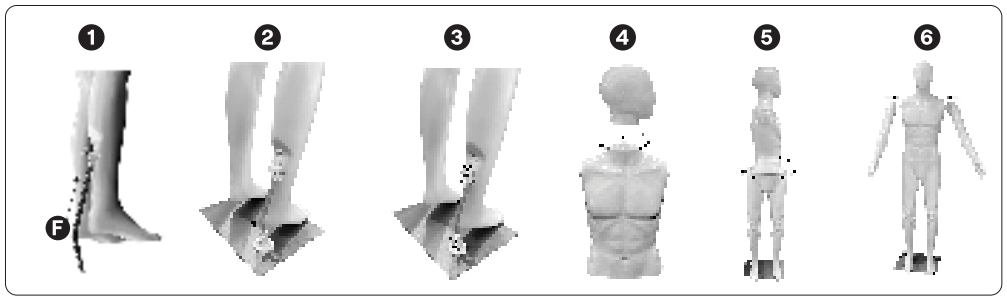
questions? comments?

We are here to help!

Phone: 1.718.535.1800

[serenelifehome.com/contact us](http://serenelifehome.com/contact-us)

Assembly Instructions



- 1. Insert the Rod (F) into the Leg:** Align and insert the metal support rod into the designated leg slot.
- 2. Secure the Legs to the Base:** Place the connected legs and rod into the hole on the metal base plate.
- 3. Stabilize the Connection:** Ensure the base and leg connection is locked and firmly in place.
- 4. Attach the Head:** Insert the head into the neck socket and twist gently to secure.
The head can rotate 360°.
- 5. Connect the Torso to the Legs:** Fit the upper torso onto the top of the leg section.
Rotate and press down to lock it in place.
- 6. Attach the Arms:** Insert both arms into the shoulder joints. Adjust as needed for posing.

Cleaning, Maintenance, and Storage

Cleaning: Wipe the mannequin with a soft cloth and mild soap. Do not use harsh cleaners or rough materials.

Maintenance: Check that all parts are tight and secure. Reattach any loose parts if needed.

Storage: Take the mannequin apart for easy storage. Keep in a dry, cool place away from sunlight and moisture.

Register Product

Thank you for choosing SereneLife. By registering your product, you ensure that you receive the full benefits of our exclusive warranty and personalized customer support. Complete the form to access expert support and to keep your SereneLife purchase in perfect condition.

Start Here



Model Number:
SLMAQML
Serenelifehome.com/pages/register