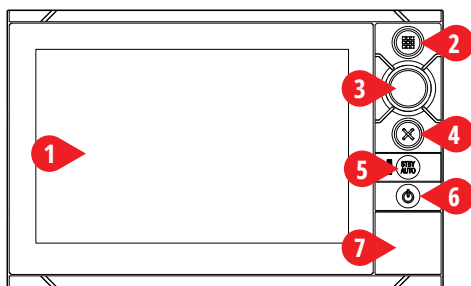


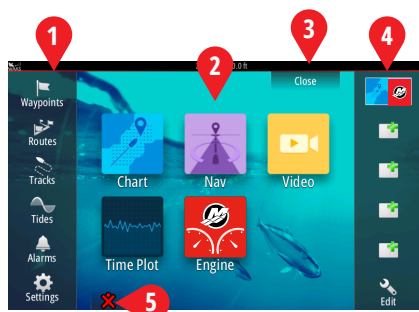
### Display Controls



- 1 Touch Screen**
- 2 Home Key** - Press once to display the Home page. Repeat short presses to cycle the favorite buttons. Press and hold to display all favorite buttons as an overlay on active page. Repeat short presses to cycle the favorite buttons.
- 3 Rotary Knob** - Rotate to scroll through menu items, then press to confirm a selection. Rotate to adjust a value and to zoom a zoomable panel.
- 4 X Key** - Press once to exit a dialog, to return to previous menu level and to remove the cursor from the panel.
- 5 STBY / AUTO Key** - Not applicable to Mercury autopilot system.
- 6 Power Key** - Press once to display the System control dialog. Repeat short presses to cycle the backlight brightness.
- 7 Card Reader Door**

### Home Page

HOME KEY



- 1 Tools**
- 2 Applications**
- 3 Close button** (Return to last screen)
- 4 Favorites**
- 5 Man Over Board (MOB) button**

### System Control Dialog

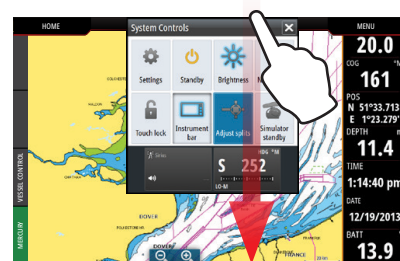
Gain quick access to system settings. Activate by:

- pressing the **POWER** or
- swiping from the top of the screen

POWER KEY

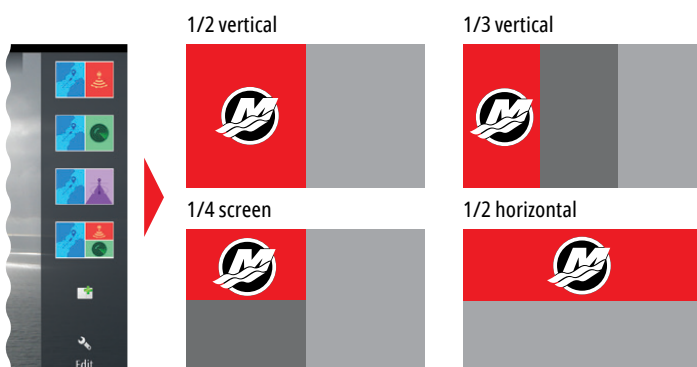


Note: Content of the System Control dialog depends on connected equipment.



### Favorites

Use favorites to create custom panel configurations with engine data



### Edit a favorite page

Enter the Favorites edit mode by:

- Tapping the Edit icon
- Pressing and holding a favorite button
- Select edit options



Edit favorite page



Delete favorite page

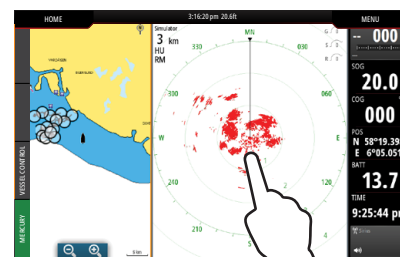
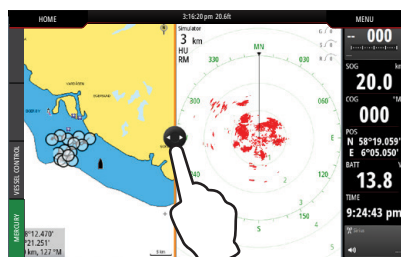


Add new favorite page

- Follow on screen instructions to build custom screens

### Adjust split page panel size

- 1.** - Open the System Control Dialog  
- Tap the adjust splits to show the resize icon
- 2.** Drag the resize icon to set preferred panel size
- 3.** Save the changes by tapping the screen

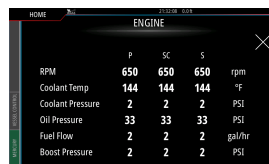


### Engine Page



Engine page offers touch zones that provide access to detailed vessel information

#### 1. Engine



#### 2. Speed



#### 3. Battery



#### 4. Trim



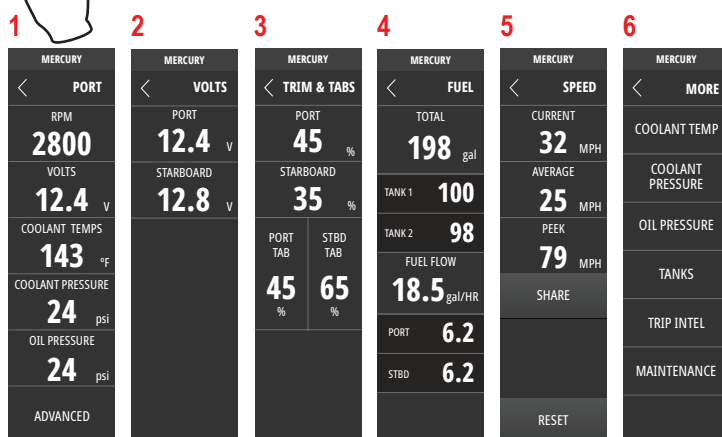
#### 5. Fuel



Note: Pressing in the center, on one of these screens will provide access to a deeper level that displays only the selected information. Except full engine data.

### 6. Control Bar: Mercury

Allows you to view engine data at a glance, without having the engine page open.



### 7. Control Bar: Vessel Control

Allows access to Mercury engine\* control features.

\*Note: Control features vary based on engine type.

