

Transfer



User Manual

For version 1.2

Legal information

This manual is protected by copyright and all reproduction and further distribution without written authorization from Elektron Music Machines MAV AB is strictly prohibited. The content of this manual is for informational use only, is subject to change without notice and should not be read as a commitment by Elektron Music Machines MAV AB. Elektron Music Machines MAV AB holds no responsibility or liability for any errors or inaccuracies that may appear in this manual. Also, In no event shall Elektron Music Machines MAV AB be liable for any special, indirect, or consequential damages or any damages whatsoever resulting from loss of use, data, or profits, whether in an action of contract, negligence, or other action, arising out of or in connection with the use or performance of this information.

Elektron Music Machines MAV AB or its Licensors, holds all the rights, including intellectual property rights, consisting of but not limited to, patents, copyrights, designs, trademarks and trade secrets to and in relation to Overbridge and all its software and hardware components, including the Analog Keys, Analog Four, Analog Rytm and Analog Heat and their corresponding Plugins, as well as any future Overbridge Applications and Devices.

THE FOLLOWING SYMBOLS ARE USED THROUGHOUT THE MANUAL:



Important information that you should pay attention to.



A tip that makes it easier for you to interact with Transfer.

TABLE OF CONTENTS

1. INTRODUCTION	4
1.1 ABOUT ELEKTRON TRANSFER	4
1.2 SUPPORTED ELEKTRON DEVICES.....	4
1.3 SYSTEM REQUIREMENTS	4
1.3.1 COMPUTER OPERATING SYSTEM	4
1.3.1 COMPUTER HARDWARE REQUIREMENTS	4
1.4 INSTALLING TRANSFER.....	4
1.4.1 WINDOWS.....	4
1.4.2 MAC OS X	4
1.5 UNINSTALLING TRANSFER.....	5
1.5.1 WINDOWS.....	5
1.5.2 MAC OS	5
2. USING TRANSFER.....	5
2.1 CONNECTION PAGE.....	5
2.1 CONNECTING TRANSFER TO YOUR ELEKTRON DEVICE	5
2.1.1 LEGACY OS UPGRADE	5
2.2 DROP PAGE	6
2.2.1 TRANSFERRING SAMPLES.....	7
2.2.2 TRANSFERRING OS FILES AND UPGRADING DEVICE OS (STANDARD MODE)	7
2.3 EXPLORE PAGE.....	7
2.3.1 TRANSFERRING SAMPLES TO AN ELEKTRON DEVICE	8
2.3.2 TRANSFERRING SAMPLES TO A COMPUTER.....	8
2.3.3 TRANSFERRING PRESETS TO MODEL:CYCLES.....	9
2.3.4 TRANSFERRING MODEL:CYCLES PRESETS TO A COMPUTER	9
2.3.5 MAIN CONTROLS	9
2.3.6 RIGHT-CLICK MENU.....	9
2.3.7 RIGHT-CLICK MENU IN THE TRANSFERS PANE	9
3. CREDITS AND CONTACT INFORMATION.....	10

1. INTRODUCTION

1.1 ABOUT ELEKTRON TRANSFER

Transfer is an application for Mac OS and Windows that simplifies the transfer of audio sample files between your computer and your Elektron device. You can also use Transfer to install new operating systems on your Elektron device. Transfer also supports preset transfers for Model:Cycles.

A simple drag & drop interface allows you to transfer almost any kind of audio file with great simplicity. You can drop entire folders or zip-archives directly onto the application, and preserve the folder hierarchy for all the samples contained within.

Transfer supports various sample formats and sample rates, and it automatically converts the samples to the correct native format before transferring them to your Elektron device. Transfer also makes it easy to backup any sample files from your device to your computer.

Transfer uses a USB-MIDI protocol and does not require any additional drivers installed on your computer.

1.2 SUPPORTED ELEKTRON DEVICES

Transfer supports the following Elektron devices.

- Analog Rytm MKI/MKII
- Analog Four MKI/MKII
- Analog Heat MKI/MKII
- Analog Keys
- Digitakt
- Digitone
- Digitone Keys
- Model:Samples
- Model:Cycles

Your specific device OS may enable/disable certain Transfer features. Therefore you should always run the latest OS for your device to get the best experience from the Transfer application

The latest Transfer release is found here: <http://www.elektron.se/support/transfer/>

The latest device OS for your Elektron device is found here: <http://www.elektron.se/support/>

1.3 SYSTEM REQUIREMENTS

1.3.1 COMPUTER OPERATING SYSTEM

Transfer 1.2 supports the following computer operating systems.

- PC with Windows 7 SP1 or higher.
- 64-bit Apple computer with macOS 10.9 or higher. 32-bit architectures are not supported.

1.3.1 COMPUTER HARDWARE REQUIREMENTS

Elektron recommends at least the following hardware specifications.

- 4 GB of RAM.
- Intel Core i5 CPU.

1.4 INSTALLING TRANSFER

1.4.1 WINDOWS

1. Extract the downloaded ZIP file.
2. Double-click the file called Elektron Transfer Installer.msi to run the installer software for Transfer.
3. Follow the instructions in the installation program

1.4.2 MAC OS X

1. Double-click the downloaded DMG file from Finder to mount it.
2. Drag and drop the Transfer.app file from the DMG into your Applications folder.
3. Unmount the DMG file again by ejecting it via Finder (or via your Desktop).

1.5 UNINSTALLING TRANSFER

1.5.1 WINDOWS

Use the Uninstall program option in Control Panel > Programs > Programs and Features menu to uninstall Transfer. You may need to restart your computer after the uninstallation for all installed files to disappear.

1.5.2 MAC OS

On macOS, just drag and drop the Transfer.app file from your Applications folder onto the Trashcan to uninstall the application.

2. USING TRANSFER

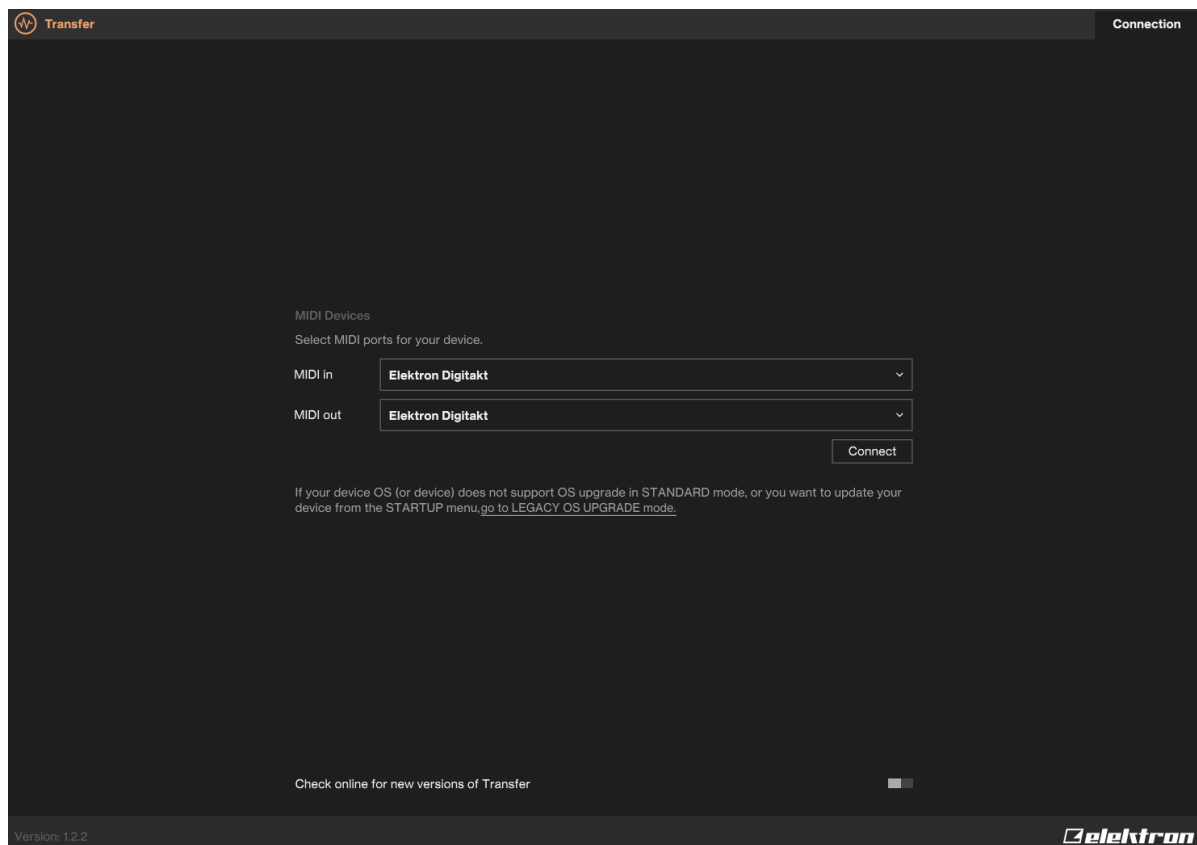
2.1 CONNECTION PAGE

2.1 CONNECTING TRANSFER TO YOUR ELEKTRON DEVICE

1. Connect your Elektron device to your computer via USB and switch it on.
2. Start the Elektron Transfer application and select the USB MIDI port(s) for your Elektron device on the Transfer CONNECTION page.
3. Press **CONNECT** to create a device connection.



If you use macOS, Transfer might ask for permission to browse the desktop the first time you start Transfer. You should allow this, and If you want to revisit this setting later, it can be found in the macOS System Preferences.



2.1.1 LEGACY OS UPGRADE

If you have problems detecting or connecting your device please make sure you have the latest OS installed on your device. You can use Transfer to update your device OS even if Transfer does not detect your device. Click the link in the text on the CONNECTION page that reads “go to LEGACY OS UPGRADE mode”.

Follow the instructions on the OS UPGRADE page to upgrade your device



You can also use the **LEGACY OS UPGRADE** page to upgrade your device OS when you are in the **EARLY STARTUP** menu on your device. Just make sure you select your MIDI interface instead of your Elektron device in the drop down menu.

Legacy OS Upgrade

1. Drop the OS file on this window or select file:

No file selected

Browse

2. On your device, navigate to GLOBAL SETTINGS > SYSTEM > USB CONFIG, and make sure that USB MIDI is selected.

3. Select MIDI port for your device or MIDI interface:

Elektron Model:Cyclax

▼

4. On your device, navigate to GLOBAL SETTINGS > SYSTEM > OS UPGRADE.

5. Click Upgrade

Upgrade

Back

6. In connections, click connect after device reboots.

2.2 DROP PAGE

Transfer

Drop

Explore

Connections

Digitakt

Digitakt 1.11 MIDI ▼

DEVICE FOLDER

/transfers-191017

Drop files here

(.wav .aif .zip .syx)

Transfers

Clear all

Clear finished

#	PROGRESS	FILE	SIZE	STATUS	SPEED	TIME LEFT	INFO
1	<div></div>	BD 808 Clean.wav	17.6 KB	Done	0.48 MB/s	-	
2	<div></div>	BD 808 Processed 03.wav	28.6 KB	Done	0.50 MB/s	-	
3	<div></div>	BD Clipped 808 Accent 6.wav	31.3 KB	Done	0.52 MB/s	-	
4	<div></div>	CH 808 Clean.wav	22.4 KB	Done	0.48 MB/s	-	
5	<div></div>	CH Clipped 808 Accent 4.wav	26.2 KB	Done	0.46 MB/s	-	
6	<div></div>	Cymbal 808 Clean.wav	166.3 KB	Done	0.58 MB/s	-	
7	<div></div>	Cymbal Clipped 808 Accent 4.wav	307.6 KB	Done	0.55 MB/s	-	
8	<div></div>	CH 808 Processed 03.wav	166.3 KB	Done	0.58 MB/s	-	

Version: 1.2

Elektron

Here you can drop device OS files, sample files, folders or zip files containing samples, directly onto the drop zone to transfer the files to your device.

Various sample formats are supported (.wav, .aiff, .mp3, and more). The exact list of supported file formats may depend on your computer OS and its built-in codecs.

When dropping complete directory structures onto the Drop zone, Transfer creates the corresponding directory structure on the device, even if you drop zip files. In the top right section of the DROP page, you can change the target folder on the device side. The default value is /transfers-YYMMDD, which means you get a folder with today's date by default.

The files are converted and re-sampled automatically using high-quality algorithms if they are not already in the native format supported by your device (typically 16bit/48kHz, mono). Files that were previously backed up by the Transfer application itself are transferred in a bit-accurate manner, preserving compatibility with your device projects.

At the bottom of the application window, there is a list of currently active transfers. You may drop additional files to the drop zone while other transfers are ongoing. The files are added the job queue automatically.

2.2.1 TRANSFERRING SAMPLES

1. Connect the Elektron device to the computer via USB.
2. Open the Transfer application on your computer.
3. On the Transfer CONNECTION page, set the MIDI IN and MIDI OUT ports to your Elektron device.
4. On the Transfer DROP page, drag and drop the samples. The samples will automatically be transferred to the Elektron device

2.2.2 TRANSFERRING OS FILES AND UPGRADING DEVICE OS (STANDARD MODE)

This is the standard mode of transferring device OS files to your Elektron device is to use the Transfer DROP page and in this way upgrade your device OS.

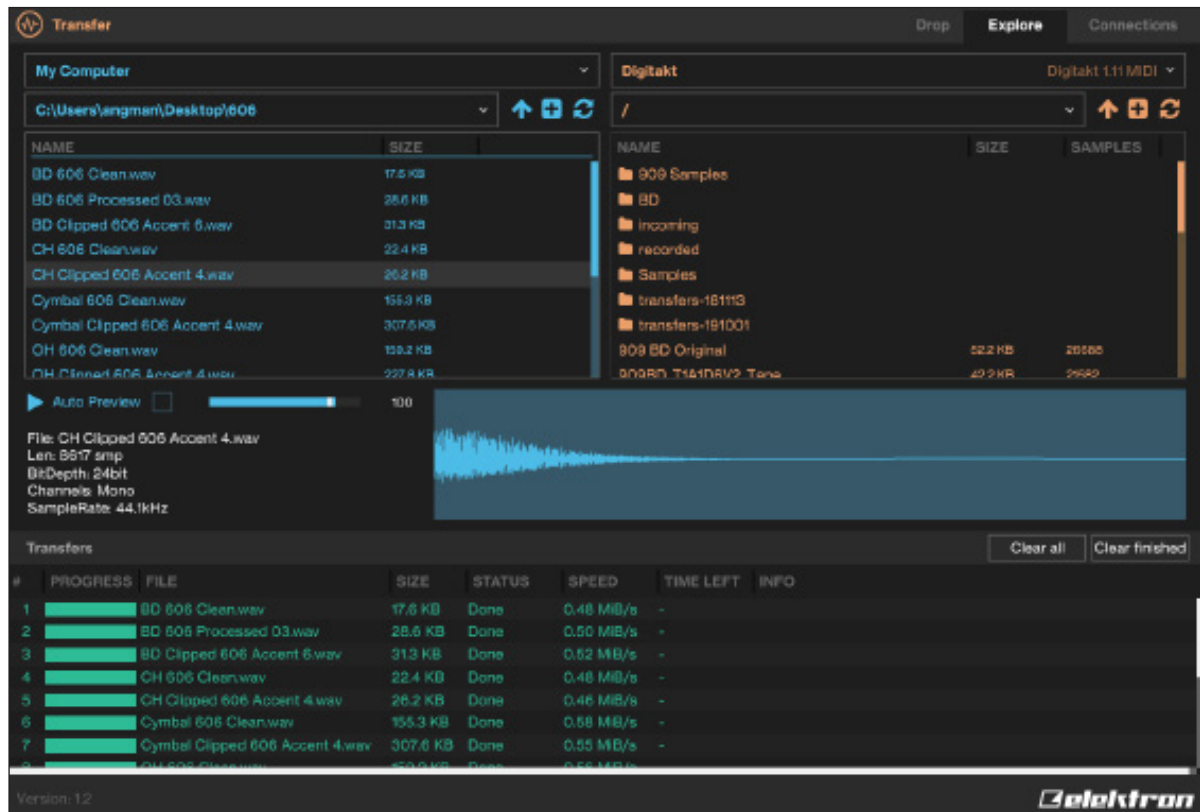
1. Connect the Elektron device to the computer via USB.
2. Open the Transfer application on your computer.
3. On the Transfer CONNECTION page, set the MIDI IN and MIDI OUT ports to your Elektron device.
4. On the Transfer DROP page, drag and drop the OS file. The OS file is then automatically transferred to the Elektron device and the OS update initiates.
5. On your device. Press **[YES]** to confirm the OS update.



We recommend that you select **USB MIDI mode** on your Elektron device. You find this setting in **GLOBAL SETTINGS > SYSTEM > USB CONFIG**, or **CONFIG MENU > DEVICE > USB MODE** depending on your device.

2.3 EXPLORE PAGE

On the EXPLORE page, you have a two-column explorer view with the Elektron device's contents on one side and the computer contents on the other side. Here you can do simple drag and drop transfers of files and directories from your computer to your device, or the other way around. You can also preview the samples you have on your computer here.



2.3.1 TRANSFERRING SAMPLES TO AN ELEKTRON DEVICE

You can use the EXPLORE page to transfer samples from a computer to your Elektron device

1. Connect the Elektron device to the computer via USB.
2. Open the Transfer application on your computer and then select the USB MIDI port(s) for your device on the Transfer CONNECTION page.
3. In Transfer, click the EXPLORE tab to open the EXPLORE page.
4. On the EXPLORE page on the left side under MY COMPUTER (e.g. your computer), navigate to the samples or folders you want to transfer.
5. Drag and drop the samples or folders to your preferred folder under *DEVICE NAME* (e.g. Digitakt or Analog Rytm etc.).

2.3.2 TRANSFERRING SAMPLES TO A COMPUTER

You can also transfer samples from your Elektron device to a computer.

1. Connect the Elektron device to the computer via USB.
2. Open the Transfer application on your computer, and then select the USB MIDI port(s) for your device on the CONNECTION page.
3. In Transfer, click the EXPLORE tab to open the EXPLORE page.
4. On the EXPLORE page on the right side under *DEVICE NAME* (e.g. Digitakt or Analog Rytm etc.), navigate to the samples or folders you want to transfer
5. Drag and drop the samples or folders to your preferred folder under MY COMPUTER (e.g. your computer).

Samples that are transferred from your Elektron device to your computer are stored in .wav format with bit-accuracy such that they can be transferred back to your device again with full project compatibility preserved. Note you should keep the .wav files unaltered on the computer if you want to guarantee that they are kept compatible with your device projects.

Should you edit the files, they end up with a different hash sum, which in turn means that the Elektron device will no longer be able to load them into your projects. You may, however, rename or move files both on the computer and on the device without losing project compatibility.

When you select an audio file in the computer-side file browser, there is a preview pane that allows you to preview the audio file using the default system audio interface. It also shows a short file info summary.

2.3.3 TRANSFERRING PRESETS TO MODEL:CYCLES

You can use the EXPLORE page to transfer presets from a computer to Model:Cycles.

1. Connect the Elektron device to the computer via USB.
2. Open the Transfer application on your computer and then select the USB MIDI port(s) for your device on the Transfer CONNECTION page.
3. In Transfer, click the EXPLORE tab to open the EXPLORE page.
4. On the EXPLORE page on the left side under MY COMPUTER (e.g. your computer), navigate to the presets or folders you want to transfer.
5. Drag and drop the presets or folders to your preferred folder under MODEL CYCLES.

2.3.4 TRANSFERRING MODEL:CYCLES PRESETS TO A COMPUTER

You can also transfer presets from Model:Cycles to your computer.

1. Connect the Elektron device to the computer via USB.
2. Open the Transfer application on your computer, and then select the USB MIDI port(s) for your device on the CONNECTION page.
3. In Transfer, click the EXPLORE tab to open the EXPLORE page.
4. On the EXPLORE page on the right side under MODEL CYCLES, navigate to the presets or folders you want to transfer.
5. Drag and drop the samples or folders to your preferred folder under MY COMPUTER (e.g. your computer).



- Model:Cycles presets are stored in a proprietary .mc-pst format.
- Please note you can not see or access the Model:Cycles's FACTORY folder in Transfer.

2.3.5 MAIN CONTROLS

There are three buttons available for each of the two columns.

- **UP** Navigates up one level in the folder hierarchy.
- **CREATE FOLDER** Creates a folder in the current directory.
- **REFRESH** Updates the files and folders to the current state.

2.3.6 RIGHT-CLICK MENU

If you right-click on a file or folder in the main windows on the EXPLORE page, it brings up a contextual menu with the following options:

- **RENAME** Lets you rename the file or folder.
- **DELETE** Removes the file or folder.
- **CREATE FOLDER** Creates a folder in the current directory.
- **REFRESH** Updates the file or folder to the current state.
- **REVEAL IN EXPLORER/FINDER** Opens the files or folders location in Explorer/Finder. This option is only available if you have selected your computer as a device in the column.

2.3.7 RIGHT-CLICK MENU IN THE TRANSFERS PANE

If you right-click on a file in the TRANSFERS pane, it brings up a menu with the following options

- **REMOVE** Removes the file from the TRANSFERS window.
- **CANCEL** Cancels the ongoing file transfer.
- **RETRY** Retries to send a file that has been stopped or canceled.
- **AUTO-SCROLL** With this option selected, the file currently in transfer is visible in the TRANSFERS pane.

3. CREDITS AND CONTACT INFORMATION

CREDITS

PRODUCT DESIGN AND DEVELOPMENT

Andreas Brykt
Ufuk Demir
Oscar Dragén
Christer Lindström
Jimmy Myhrman
Olle Petersson
David Smallbone Tizard

DOCUMENTATION

Erik Ångman

CONTACT INFORMATION

ELEKTRON WEBSITE

<http://www.elektron.se>

OFFICE ADDRESS

Elektron Music Machines MAV AB
Banehagsliden 5
SE-414 51 Gothenburg
Sweden

