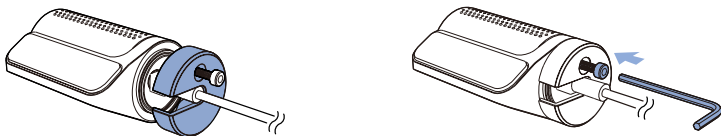
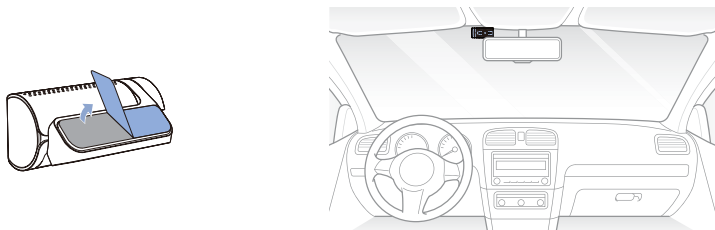


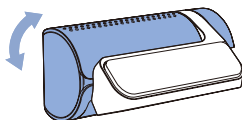
- Ⓒ Align the tamperproof bracket with the mount bracket. Use the Allen wrench to tighten the screw. Do not fully tighten the screw as this should be done after attaching the camera to the rear windshield.



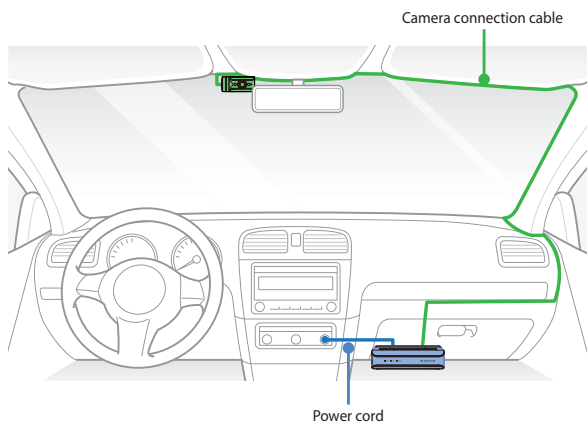
- Ⓓ Peel off the protective film from the double-sided tape and attach the rear IR camera to the front windshield.



- Ⓔ Adjust the angle of the lens by rotating the body of the rear IR camera.

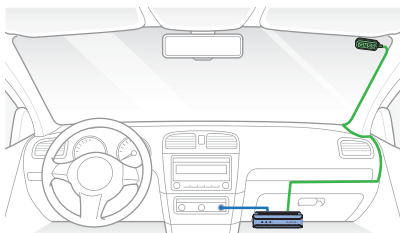
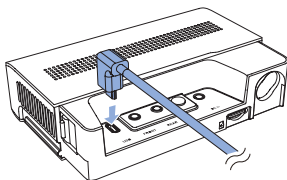


- F Use the pry tool to lift the edges of the rubber window sealing and/or molding and tuck in the rear IR camera connection cable.

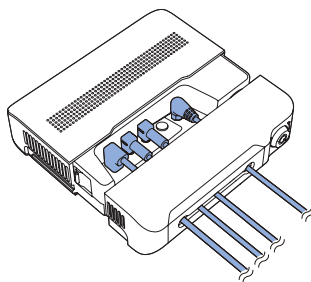
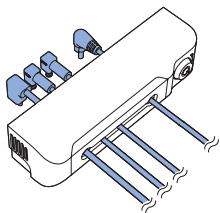


➤ GNSS Module installation and pairing

- A** Connect the GNSS Module to the box and attach it to the edge of the window.

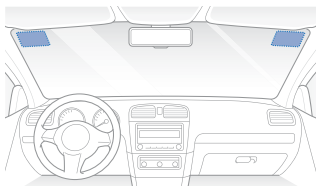


- B** Insert the cables into the cable cover and connect them to the USB socket.



▶ Blackvue Connectivity Module (CM100GLTE) installation (optional)

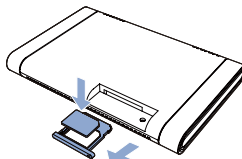
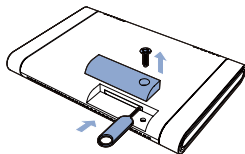
Install the connectivity module at top corner of the windshield. Remove any foreign matter and clean and dry the windshield before installation.



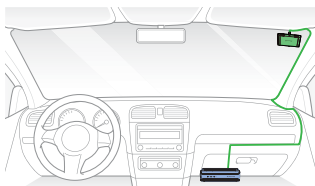
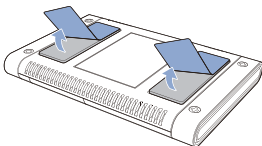
⚠ Warning

- Do not install the product in a location where it can obstruct the driver's field of vision.

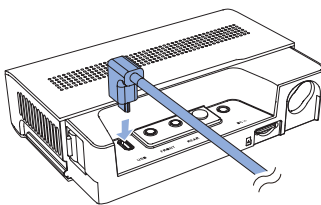
- (A) Turn off the engine.
- (B) Unscrew the bolt that locks the SIM slot cover on connectivity module. Remove the cover, and unmount the SIM slot using the SIM eject tool. Insert the SIM card into the slot.



- (C) Peel off the protective film from the double-sided tape and attach the connectivity module to the top corner of the windshield.



- Ⓓ Connect the main box (USB port) and the connectivity module cable (USB).



- Ⓔ Use the pry tool to lift the edges of the windshield trim/molding and tuck in the connectivity module cable.

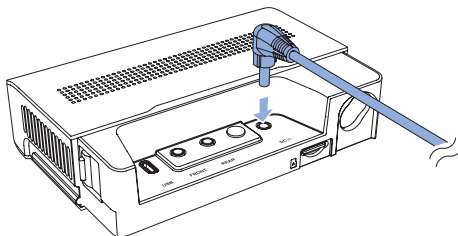


Note

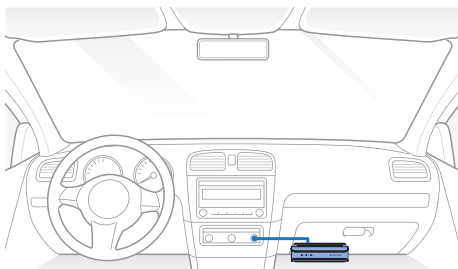
- SIM card must be activated to use LTE service. For details, refer to the SIM Activation Guide.

> Cigarette lighter power cable installation

- A** Plug the cigarette lighter power cable into the cigarette lighter socket of your car and the main unit.



- B** Use the pry tool to lift the edges of the center console and tuck in the power cord.



> Hardwiring for main unit

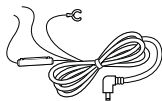
A Hardwiring Power Cable uses the automotive battery to power your dashcam when the engine is off. A low voltage power cut-off function and a parking mode timer to protect the automotive battery from discharge is installed in the device. Settings can be changed in the BlackVue App or Viewer.

- A** To do the hardwiring, first locate the fuse box to connect the hardwiring power cable.

Note

- Location of the fuse box differ by manufacturer or model. For details, refer to the vehicle owner's manual.

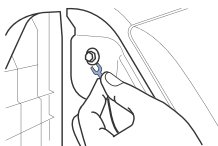
- B** After removing fuse panel cover, find a fuse that powers on when engine is turned on (ex. cigarette lighter socket, audio, etc) and another fuse that remains powered on after the engine is turned off (ex. hazard light, interior light). Connect the ACC+ cable to a fuse that powers on after engine start, and BATT+ cable to a fuse that remains powered on after engine is turned off.



Note

- To use battery saver feature, connect the BATT+ cable to the hazard light fuse. Functions of fuse differ by manufacturer or model. For details refer to the vehicle owner's manual.

- C** Connect the GND cable to metal ground bolt.

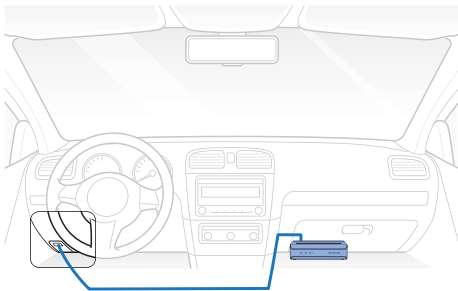


- D** Connect the power cable to the DC in terminal of the main unit. BlackVue will power up and start recording. Video files are stored on the microSD card.

Note

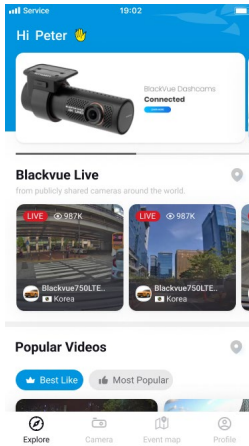
- When you run the dashcam for the first time the firmware is automatically loaded onto the microSD card. After the firmware has been loaded onto the microSD card you can customize settings using the BlackVue app on a smartphone or BlackVue Viewer on a computer.

- E** Use the pry tool to lift the edges of the center console and tuck in the hardwiring power cable.



➤ Using BlackVue app

□ App overview



Explore

- See the latest product and marketing information from BlackVue. Also watch popular video uploads and live views shared by BlackVue users.

Camera

- Add and remove camera. Watch recorded videos, check camera status, change the camera settings and use Cloud functions of cameras added to the camera list.

Event map

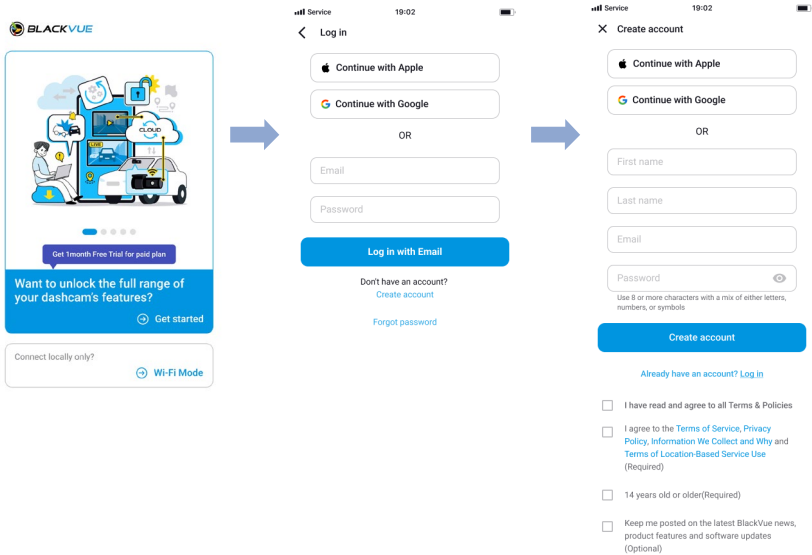
- See all the events and uploaded videos on the map shared by BlackVue users.

Profile

- Review and edit account information.

❑ Register BlackVue account

- (A) Search for the BlackVue app in the Google Play Store or Apple App Store and install it on your smartphone.
- (B) Log in / Create an account
- (i) Select **Get Started** and then move to Log-In page.
 - (ii) Select **Log in with Email** if you have an account, otherwise tap **Create account**.
 - (iii) During sign up, you will receive an e-mail with confirmation code. Enter the confirmation code to finish creating your account.

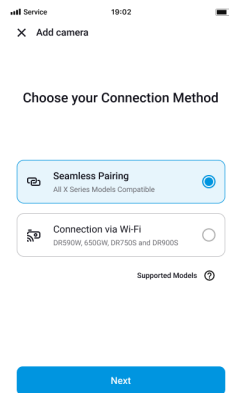
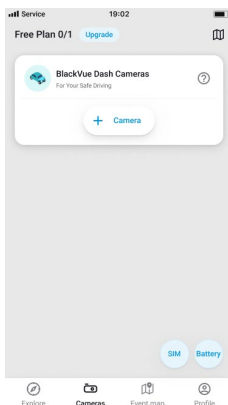
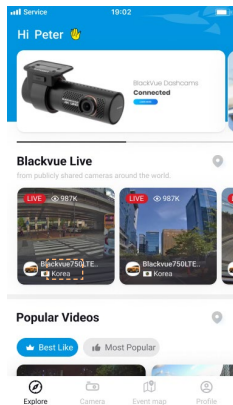


□ Add BlackVue dashcam to camera list

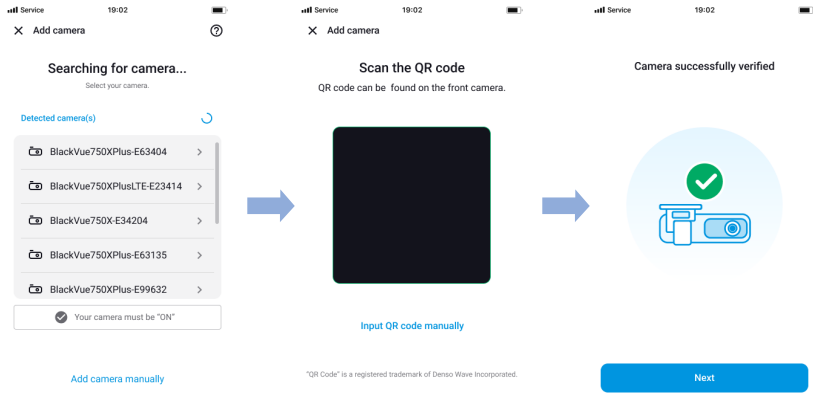
- ③ Choose one of the following methods to add your BlackVue dashcam to the camera list. Once your camera is added, continue to the steps in 'Connect to Blackvue Cloud'.

③-① Add via Seamless pairing

- (i) Select **Camera** in the Global Navigation Bar.
- (ii) Find and press **+ Camera**.
- (iii) Select **Seamless Pairing**. Make sure smartphone's Bluetooth is turned on.

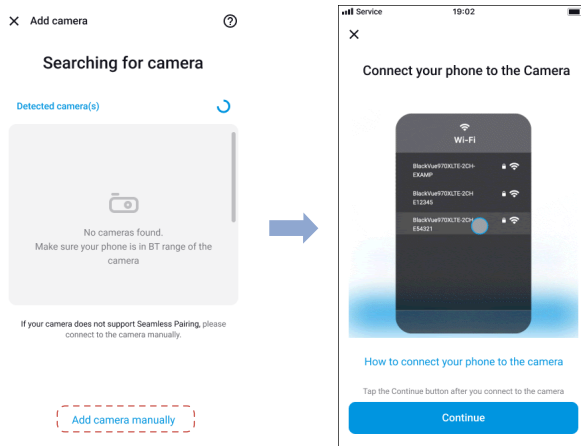


- (iv) Choose your BlackVue dashcam from the detected camera list.
- (v) To connect to the main unit scan the QR code on the front unit.



C-2 Add manually

- (i) If you want to connect to camera manually, press **Add camera manually**.
- (ii) Press **How to connect your phone to the camera** and follow the instructions.



Note

- Bluetooth and/or Wi-Fi direct has a connection range of 10m between your dashcam and smartphone.
- Dashcam SSID is printed in connectivity details label attached on your dashcam or inside the product box.

□ Connect to BlackVue Cloud (optional)

If you don't have a mobile Wi-Fi hotspot, BlackVue connectivity module or if you don't want to use the BlackVue Cloud service, you can skip this step.

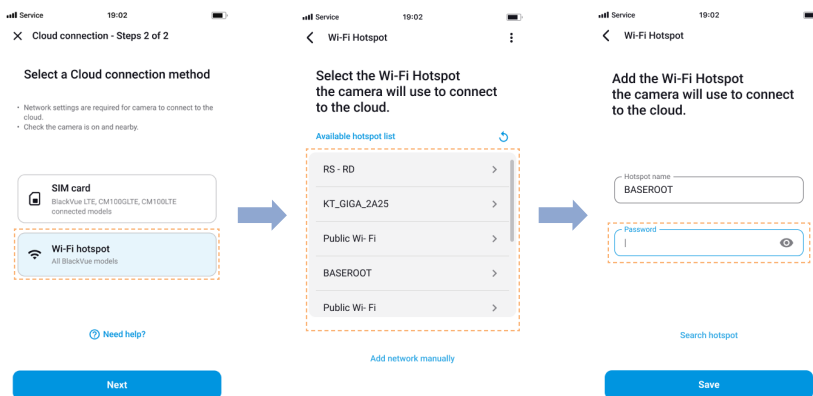
If you have a mobile Wi-Fi hotspot (also known as a portable Wi-Fi router), BlackVue connectivity module (CM100GLTE), a car-embedded wireless internet network or a Wi-Fi network near your car, you can use the BlackVue app to connect to BlackVue Cloud and see in real-time where your car is and the dashcam's live video feed.

For more information about using the BlackVue app, please refer to the BlackVue App manual from <https://cloudmanual.blackvue.com>.

④ Choose one of the following Cloud connection method. Once setup is complete, continue to steps in 'Quick settings'.

④-① Wi-Fi hotspot

- (i) Select **Wi-Fi hotspot**.
- (ii) Choose your Wi-Fi hotspot from the list. Enter the password and tap **Save**.



D-2 SIM card (Cloud connectivity using CM100GLTE)

Make sure your connectivity module is installed as instructed by the manuals included in the CM100GLTE package (sold separately). Then, follow the below steps for SIM registration.

- Select **SIM card**.
- Configure the APN settings to activate the SIM card. For detailed information, please check "SIM activation guide" in the packaging box or visit BlackVue Help Center: <https://helpcenter.blackvue.com> -> **SIM Activation Guide**.

The first screenshot shows the 'Cloud connection - Steps 2 of 2' screen. It has two options: 'SIM card' (highlighted with a dashed orange box) and 'Wi-Fi hotspot'. The 'SIM card' option is selected. Below the options is a 'Next' button.

The second screenshot shows the 'Activate SIM card' screen. It has a 'Network carrier' field with a search icon, an 'APN (Access Point Name)' field, a 'Username' field, and a 'Password' field. There is a 'Save' button at the bottom.

The third screenshot shows the 'Select your network carrier' screen. It has a search bar and a list of carriers: Australia, T-Mobile, Germany, Telekom, Thailand, TrueMove H, USA, and T-Mobile. There is an 'Other network carrier' option at the bottom.

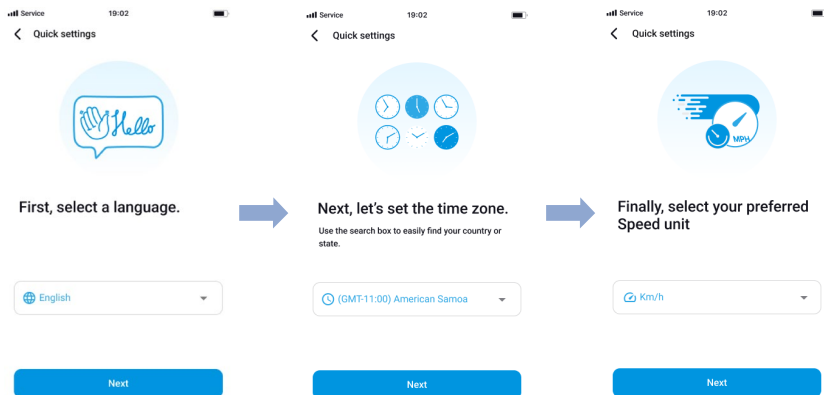
Note

- When the dashcam is connected to internet, you can use BlackVue Cloud features such as remote Live View and Video playback, Real-time location, push notification, Auto-upload, remote Firmware update etc. on BlackVue app and Web Viewer.
- To use the BlackVue Cloud Service via LTE network, SIM card must be properly activated for Internet access.
- If LTE and Wi-Fi hotspot is available for internet connection, Wi-Fi hotspot will be in priority. If LTE connection is preferred at all times, please remove Wi-Fi hotspot information.
- Some Cloud features may not work when surrounding temperature is high and/or LTE speed is slow.

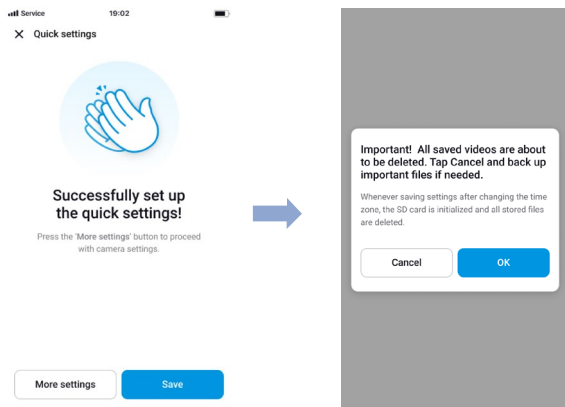
□ Quick settings (optional)

⑤ Choose your preferred settings. Quick settings allow you to choose your firmware language, time zone, and speed unit. If you prefer to do this later, press **skip**. Otherwise, press **next**.

- (i) Select the firmware language for your BlackVue dashcam. Press **next**.
- (ii) Select a time zone of your location. Press **next**.
- (iii) Select the speed unit of your preference. Press **next**.




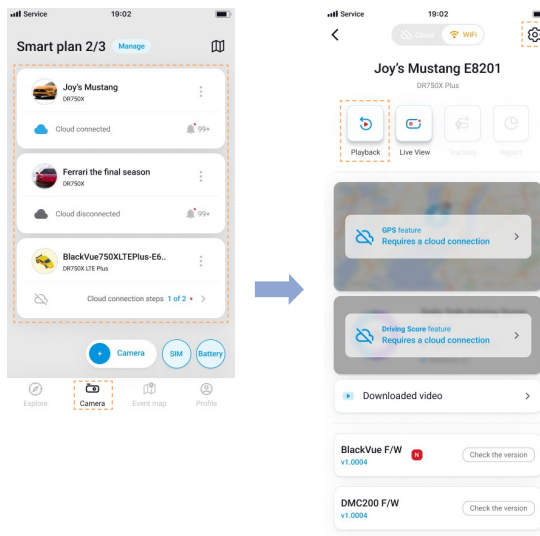
- (iv) Press **more settings** to access all of the settings or press **save**. Your dashcam will format the SD card to apply the settings. Press **OK** to confirm.
- (v) BlackVue dashcam installation is complete.



□ Playing video files and changing settings

After installation is complete, follow the below steps to play video files and change settings.

- A Select **Camera** on your Global Navigation Bar.
- B Tap your dashcam model in the camera list.
- C To play video files, press **Playback** and tap the video you want to play.
- D To change the settings, press  settings.



Note

- For more information about BlackVue app, go to <https://cloudmanual.blackvue.com/>.

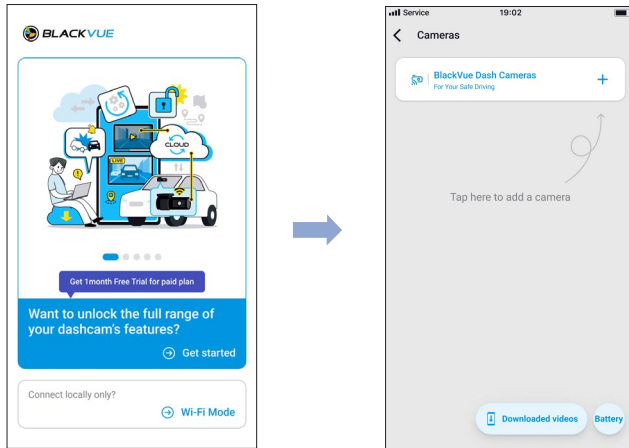
❑ Wi-Fi mode

What's "Wi-Fi mode"

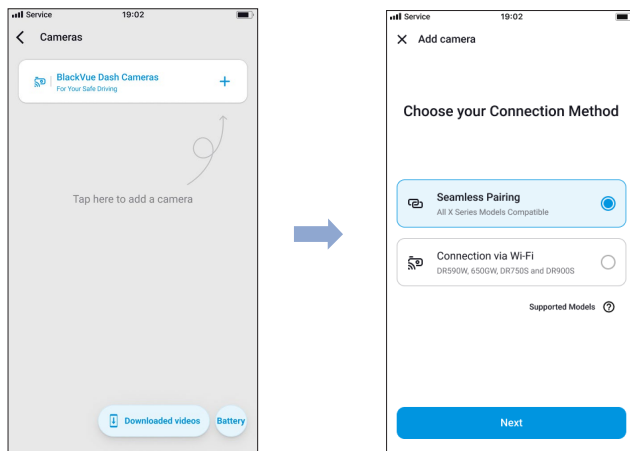
The manual describes the "Wi-Fi mode" available on the BlackVue App, which is designed for users who do not want to create an account and log in or need to connect their dashcam directly to the App.

Ⓐ How to use "Wi-Fi mode" in the BlackVue App.

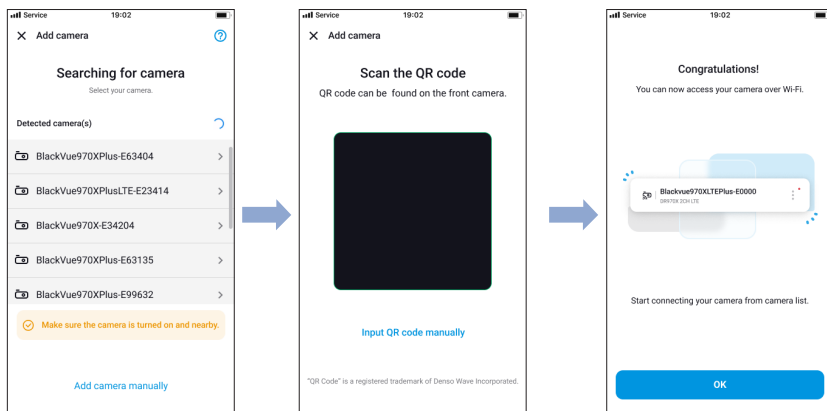
- (i) Get into the App, and you will see the Onboarding page.
- (ii) You can see the "Wi-Fi mode" button.
- (iii) Tap this button ("Wi-Fi mode"). Then you will see the Cameras list page.



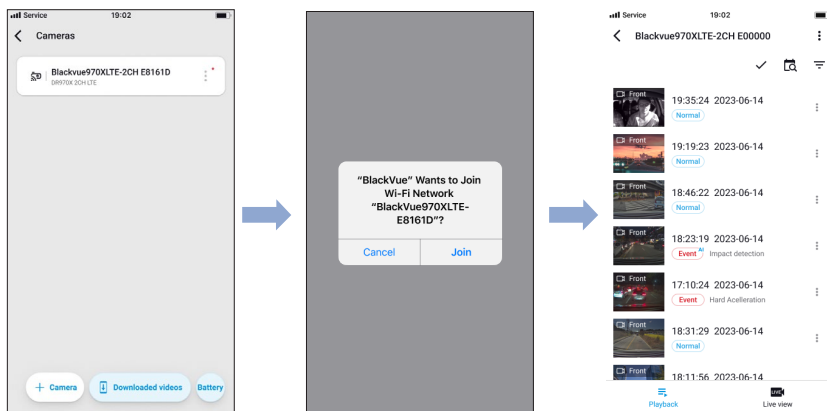
- (iv) In **Cameras list** page tap the + button.
- (v) Select the connection method **Seamless pairing**.



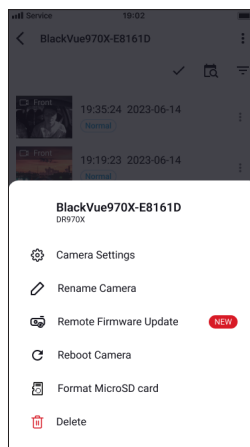
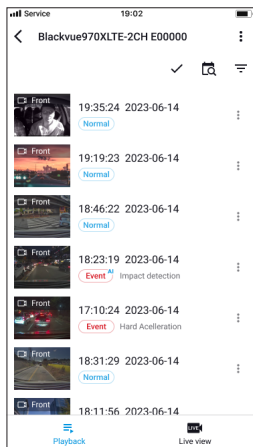
- (vi) Select your camera from the list.
- (vii) Verify your camera by scanning the QR code.
- (viii) Congratulations! your camera is already connected.



- (ix) In the Camera list page, tap on your Camera and you will see **Camera Connection** pop-up.
- (x) Tap **Join** and you will get to the **Video List** page where you can access all the videos.



B What features are available in this mode?



(i) Camera Settings

Setting the dashcam's firmware setting

- Basic - Time, Video, Recording mode
- Sensitivity - G-sensor, Motion detection
- System - LED, Text Overlay, Speed alert
- Wi-Fi - Log in, Wi-Fi on/off
- Cloud - Cloud on/off, network
- FW language

(ii) Rename Camera

- To change name of the camera.

(iii) Remote Firmware Update

- To download and update the firmware of the camera.

(iv) Reboot Camera

- Option to optimize dashcam performance.

(v) Format MicroSD card

- To clean the file list by removing all unwanted files.

(vi) Delete

- To delete the camera from the app.