

Combination Key Safe Box Instruction

To open the key box

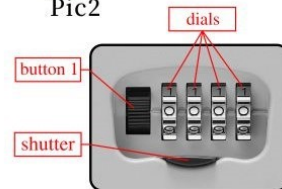
1. Slide shutter board to reveal the dials.
2. Rotate dials to the current combination (factory combination is 0-0-0-0).
3. Push button 1 near the dials.
4. After the box is opened, to plug in/out the shackle, pull the button 2 inside the box from right side to left, and loose the button 2 after pulling in/out the shackle, keys can be put in or taken away, shown in Pic1 (for Item: CH-802)
- Open the box, push the button inside the box to plug out the shackle, shown in Pic2 (for Items: CH-866 CH-827 CH-827P CH-847)
5. When ready to close, upset the dials to protect your combination. Close the shutter.



Pic1



Pic2



Pic3



Pic4

To set your combination

1. Open the key safe box (factory setting is 0-0-0-0).
2. Move the RESET button from position 'A' to position 'B', as shown in Pic 4.
3. Turn the dials to desired combination.
4. Move the RESET button from position 'B' back to position 'A'.
5. The new combination is now set.

Important notes:

1. Keep the shutter board closed for water resistance.
2. It is recommended that the dials are rotated weekly to keep them work well.

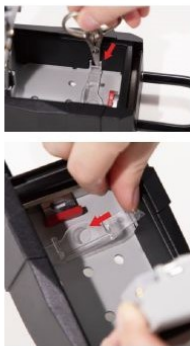
Introduction

Uninstall the Hook

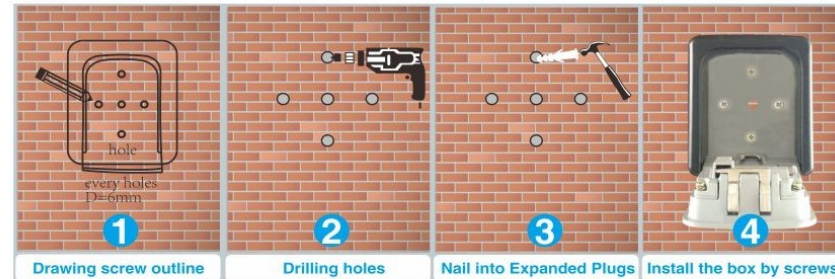
Take a small flat object, such as a small scissors, insert it into the hole on the side of the hook, and then lightly and slowly lift the hook out. Don't lift too fast or use too much force to avoid breaking the hook.

Install the Hook

Tilt the hook, place the left end in the mounting hole first, then pinch the right end of the hook with your thumb, and gently press down and left at the same time, so that the right end is also locked into the mounting hole, and you will hear a "click". Pay attention to the direction of the hook and avoid installing it backward.



Instruction



Method 1: Installed on the wall



Method 2: Installed on door handle



MADE IN CHINA