

# ZONELINE®

## Packaged Terminal Air Conditioners

WITH  
PERFECT CONTROL  
TECHNOLOGY



**GE APPLIANCES**  
*a Haier company*

**AIR&WATER**  
SOLUTIONS

## Finally – A PTAC that's juuust right. Zonline® Perfect Control PTAC

Say goodbye to rooms that are too hot, too cold, too loud or too humid. Thanks to cutting-edge inverter technology and a variable-speed compressor, GE Appliances' Zonline® Perfect Control PTAC helps keep rooms comfortable and quiet for occupants, all while offering greener operation and energy savings for you.



Cutting-Edge Inverter Technology meets GE Appliances' first PTAC to use inverter technology and a variable-speed compressor that gives guests more comfort, more often.

### New Updated Appearance

The new Zonline® grey white chassis color will complement any installation and room decor. Easy-to-read interface makes navigation simple.

### Whisper-Quiet Operation

A large cross-flow blower, a variable speed compressor, and two EC motors work together to minimize noise and maximize comfort.

### Eco-Friendly Build

Because GE believes in protecting our world, all Zonline Perfect Control PTACS will be using R454B--the most environmentally friendly refrigerant on the market with a GWP of 466. This refrigerant can be used in the entire US and even meets projected requirements in 2030 and beyond.



### Efficient Cold Weather Heat Pump

The variable speed compressor and advanced defrost capability on Perfect Control models allow for the best-in-class heat pump operation down to 0°F (excludes ICR models).

### Best-In-Class Reliability

With over 1 million units installed across the country, Zonline® PTACs offer unrivaled reliability backed by a dedicated service network and field team that helps you stay up and running.

### Unmatched Durability

All Zonline® units are made of the highest quality materials and tested in extreme environments to ensure they operate at peak performance, season after season.



Every Zoneline® with Perfect Control Technology includes the features below that make Zoneline known for efficiency, reliability, and sound performance.

The variable speed compressor and advanced defrost capability provide reliable cold weather heat pump performance. It allows for the best-in-class heat pump operation down to 0°F (excludes ICR models).

**ZONELINE®**  
**Perfect Control Variable Speed Heat Pumps with Corrosion Protection**

**AZVS15DCXWA (230/208V)**  
**AZVS15ECXWA (265V)**

- Electronic touch control with LED display
- On-board Wi-Fi SmartHQ™ Management ready
- Quiet operation- baked on mastic sound barrier
- Corrosion protection package
- SMC base pan and bulkhead
- Dehumidification sentinel
- Dual EEV flow control
- Twin rotor compressor (ultra-quiet)
- Heat and freeze sentinel
- Boost heat option
- Heat pump down to 0°F
- Electronic temperature limiting
- Fresh air vent
- R454B refrigerant

**In addition to all the features previously mentioned, Zoneline offers more features to meet specific application needs.**

**AZVS15DMXWA (230/208V)\***  
**AZVS15EMXWA (265V)\***

- Makeup Air with adjustable cfm
- Merv13 filter option for Makeup Air

**AZVS15ERXWA (265V)**

- With Inverter, ICR, and WiFi
- Heat pump operation down to 25°F

\*Not recommended for use within two miles of the coast

All Zoneline Fixed Speed Package Terminal Air Conditioners have the following features:

**Cooling & Electric Resistance Heat unit (230/208V)**

**AZES07DCXXA**  
**AZES09DCXXA**  
**AZES12DCXXA**  
**AZES15DCXXA**

- Electronic touch controls with LED display
- Quiet operation-baked on mastic sound barrier
- Corrosion protection package
- SMC base pan and bulkhead
- Electronic temperature limiting
- Fresh air vent
- R454B refrigerant

**In addition to the features as seen above, Zoneline offers capabilities specific to special environments.**

**Heat Pump with ICR (230/208V)**

**AZHS07DRXXA**  
**AZHS09DRXXA**  
**AZHS12DRXXA**  
**AZHS15DRXXA**

- ICR (Internal condensate removal)
- Boost heat option
- Heat pump down to 25°F

**Heat Pump (230/208V)**

**AZHS07DCXXA**  
**AZHS09DCXXA**  
**AZHS12DCXXA**  
**AZHS15DCXXA**

- Boost heat option
- Heat pump operation down to 25°F

**Heat Pump (265V)**

**AZHS07ECXXA**  
**AZHS09ECXXA**  
**AZHS12ECXXA**  
**AZHS15ECXXA**

- Boost heat option
- Heat pump operation down to 25°F



Electrical Connection/  
Sub-Base

GE Zonline Specification — Resistance Heater Wattage


The Power Connection Kit for the installation is determined by the voltage and amperage of the electrical circuit and the means of connecting the unit to the building wiring. If the unit is to be plugged into a receptacle, a line cord kit would be used; if the unit is to be permanently connected, a direct connect or permanent connection kit would be used. Cord set units of 265 volts must be installed in compliance with National Electrical Code. (Article 440.60)

Power Connection Kits


Required on all models. See specification information below for heater kWh and branch circuit ampacity.

GE Zonline offers short and long power cords, direct connect universal supply kits and sub bases. Power connection kits are required for all models. See pages 10–12 for all product options.


Receptacles/Sub-bases




**Tandem**  
230/208V 15 Amp  
NEMA6-15R




**Perpendicular**  
230/208V 20 Amp  
NEMA6-20R




**Large tandem**  
230/208V 30 Amp  
NEMA6-30R



**265V 15 amp**  
NEMA7-15R;  
receptacle used on  
265V sub-base



**265V 20 amp**  
NEMA7-20R;  
receptacle used on  
265V sub-base



**265V 30 amp**  
NEMA7-30R;  
receptacle used on  
265V sub-base

GE ZONELINE Specifications—Resistance Heater Wattage

	230/208-Volt	Line-Cord Connected (P) and Direct Connected Units (D)				
BTUh size	7,000/9,000			12,000/15,000		
Power connection kit	RAK315P & RAK315D**	RAK320P & RAK320D**	RAK330P & RAK330D**	RAK315P & RAK315D**	RAK320P & RAK320D**	RAK330P & RAK330D**
Total watts	2,410/1,990	3,420/2,830	4,830/3,990*	2,430/2,020	3,450/2,860	4,860/4,020*
Heater watts	2,400/1,960	3,400/2,780	4,800/3,930*	2,400/1,960	3,400/2,780	4,800/3,930*
Heater BTUh	8,100/6,600	11,600/9,400	16,300/13,400*	8,100/6,600	11,600/9,400	16,300/13,400*
Total amps	10.5/9.6	14.9/13.6	21.0/19.2	10.6/9.7	15.1/13.8	21.2/19.3
MCA	15	20	25	15	20	25
Recommended protective device (MOCP)	15 amp time-delay fuse or breaker	20 amp time-delay fuse or breaker	30 amp time-delay fuse or breaker	15 amp time-delay fuse or breaker	20 amp time-delay fuse or breaker	30 amp time-delay fuse or breaker

	265-Volt	Permanent (P, Cord Set) and Direct-Connected Units (D)				
BTUh size	7,000/9,000			12,000/15,000		
Power connection kit	RAK515P & RAK515D	RAK520P & RAK520D	RAK530P & RAK530D	RAK515P & RAK515D	RAK520P & RAK520D	RAK530P & RAK530D
Total watts	2,440	3,450	4,850*	2,460	3,470	4,870*
Heater watts	2,400	3,400	4,800*	2,400	3,400	4,800*
Heater BTUh	8,100	11,600	16,300*	8,100	11,600	16,300*
Total amps	9.1	12.9	18.1	9.3	13.1	18.4
MCA	15	20	25	15	20	25
Recommended protective device (MOCP)	15 amp time-delay fuse or breaker	20 amp time-delay fuse or breaker	25 amp time-delay fuse or breaker	15 amp time-delay fuse or breaker	20 amp time-delay fuse or breaker	25 amp time-delay fuse or breaker

Each line cord kit has an integral Leakage Current Detection and Interruption (LCDI) device as required by National Electrical Code (NEC) and Underwriters Laboratories (UL) for units manufactured after August 1, 2004 .

Specifications subject to change.

Total watts and total amps include electric heat and fan motor(s).

RAK515P, RAK520P and RAK530P are only to be used with a sub-base.

\*30 AMP heater wattage will be reduced in low fan operation.

\*\*230/208V Direct connect kits require the purchase of the RAK4002D junction box.

ZONELINE®  
Wall Sleeve Accessories (Color Matched for AZES-AZVS-AZHS Series)

Delivering Reliable Comfort.

Only genuine parts and accessories from GE Appliances keep your Zonline® units running in peak condition.

Engineered and constructed from high-quality materials for a guaranteed fit, convenient replacement and constant comfort.



- RAB42MGSTC**  
**Acoustic Wall Sleeve-Metal Grey White**
- Additional white insulation layer of Owens Corning AcoustiZorb™ (8mm thick)
  - Increases Zonline PTAC STC level to 31 (Does not apply to Makeup Air units)
  - Ideal for high noise areas such as airports, highways, and construction sites
  - Ships flat, assembled in field



- RAB42MG**  
**Quick Snap Wall Sleeve - Metal Grey White**
- Universal design
  - Insulated top & sides
  - Heavy gauge metal
  - Color matched
  - 4-piece “quick snap” design
  - Ships flat, assembled in field



- RAB42PG**  
**Quick Snap Wall Sleeve - Plastic Grey White**
- Stainless steel locking components
  - Fiberglass reinforced polyester compound
  - Color matched and standard size
  - Insulated top and sides
  - Ships flat, assembled in field

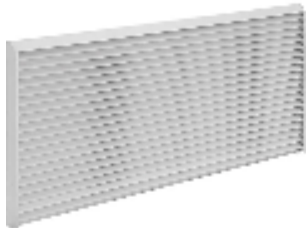


- Quick Snap Wall Sleeve Extended Depth-Metal Grey White**  
**RAB4216MG**  
16” extended depth  
**RAB4218MG**  
18” extended depth  
**RAB4220MG**  
20” extended depth  
**RAB4224MG**  
24” extended depth  
• Ships flat, assembled in field (for all 4 above)

**ZONELINE® Outdoor Grille**  
**Accessories (For AZES-AZHS-AZVS Series)**



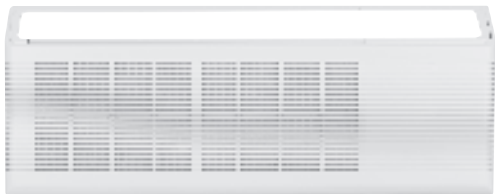
- RAK40**  
**Air Deflector Kit**
- Adapts AZ chassis for use with other non-GE architectural grilles
  - Aluminum deflector installed to condenser end sheet flanges to prevent condenser airflow recirculation



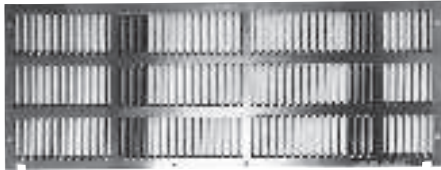
- RAG42AA**  
**Architectural Aluminum Zoneline PTAC Grille**
- 42 inches wide
  - Clear anodized coating
  - Includes air diverter baffles
  - Easy installation on RAB42 Series wall sleeves



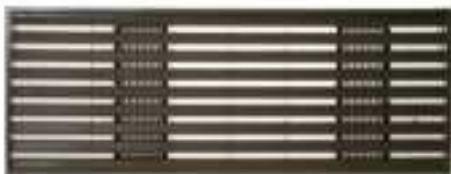
- RAG42PD**  
**Zoneline Grille in Dark Brown Plastic**
- 41-3/4 x 15-3/4



- WP71X34335**  
**Replacement Room Cabinet**
- Wraparound design with textured finish
  - Color matched for AZES, AZVS, AZHS Series
  - Injection-molded with high-impact polystyrene
  - Fastens to chassis without tools or hardware
  - Includes slide-out filters for AZES-AZVS-AZHS series
  - Available through [geapplianceparts.com](http://geapplianceparts.com)



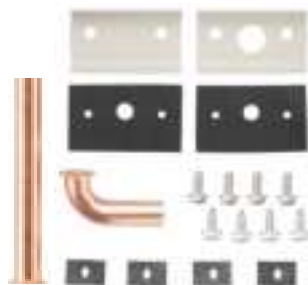
- RAG60**  
**Stamped Aluminum Exterior Rear Grille**
- Optimizes air flow
  - Made of durable aluminum



- RAG62**  
**Zoneline Architectural Rear Grille - Maple**
- Optional, one-piece molded grille and frame assembly for improved appearance and protection
  - Molded of GE Cycloloy® with a slightly textured, colorfast surface to blend with most walls



- RAG42PB**  
**Zoneline Filter Grille in Beige Plastic**
- 41-3/4 x 15-3/4

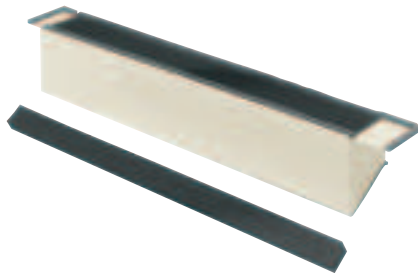


- RAD10**  
**(All Zoneline Series)**  
**Internal/External Drain Kit**
- Provides positive control of condensate water
  - Routes condensate to exterior or interior of the building
  - Suitable provision (field applied) required for connection to drain system
  - 1/2" OD copper assemblies
  - Includes short right-angle tube and 3"-long straight tube

**ZONELINE®**  
**Accessories (For AZES-AZHS-AZVS Series)**



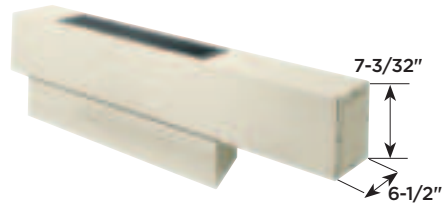
- RAK44** (5 Pack)  
**PTAC Curtain Guard**
- Durable polycarbonate
  - UV resistant
  - 125 degrees air deflection angle
  - Easy to install with no tools needed
  - Attaches with pressure sensitive adhesive



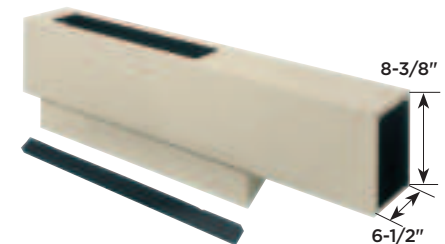
- RAK7023**  
**Duct Transition For Replacement of Existing Zonelines**  
**7-3/32" H x 6-1/2" W Ductwork**
- Allows existing duct adapter and extension to be used without requiring relocation of wall hole



- RAK601B** (Includes one RAK602B)  
**Duct Extension, Register & Trim Flange**
- 44" long
  - Includes air register and trim flange (RAK602B) for secondary space
  - Additional air register and trim flange can be ordered separately if two extensions are made
  - For use with RAK6053



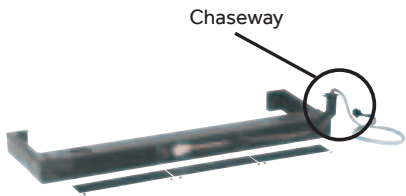
- RAK6053** (New Installations)  
**Duct Adapter**
- For use with new ducted installations
  - Allows Zoneline unit to heat or cool an adjacent room
  - Attaches to top of wall case
  - Can direct air to the left or right side of adapter with RAK601B extension



- RAK7013**  
**Duct Adapter For New Units With Old Ductwork That Measures 8-3/8" H X 6-1/2" W**
- For use with existing ducted installations where ductwork dimensions match those shown about (prior to 1998)
  - Allows existing duct extension to be used without requiring relocation of wall hole
  - **Must use discharge grille, end plate and extension mounting hardware from old duct adapter**



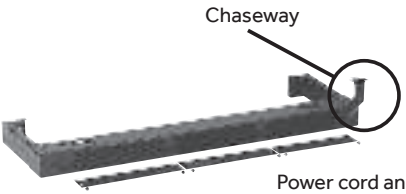
ZONELINE®  
Accessories (For AZES-AZHS-AZVS Series)



- RAK204D\***  
**230/208 Sub-Bases With Power Cord Included**
- Made of heavy-gauge steel
  - Full base enclosure with adjustable side channels
  - 4-point leveling legs
  - Sub-base adapts to service conduit, circuit breakers and receptacles up to 30 amps

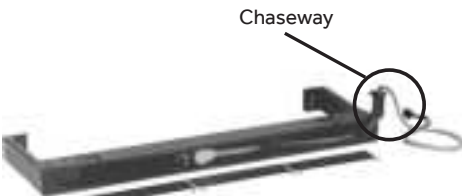
Kit No.	Sub-Base	Circuit Ampacity	Chaseway	Power Cord
RAK204D15C	Sub-Base 230V/208V	15	Included	Included
RAK204D20C	Sub-Base 230V/208V	20	Included	Included
RAK204D30C	Sub-Base 230V/208V	30	Included	Included

\*Requires the purchase of the RAK4002D Junction box



- RAK204U**  
**Sub-Bases**
- Made of heavy-gauge steel
  - Full base enclosure with breakaway side channels
  - 4-point leveling legs
  - Used as a non-electrical sub-base to support the unit

Kit No.	Sub-Base	Circuit Ampacity	Chaseway	Power Cord
RAK204U	Standard	N/A	Included	Not Included



- RAK204E**  
**265V Sub-Bases With Power Cord Included**
- Made of heavy-gauge steel
  - Full base enclosure with adjustable side channels
  - 4-point leveling legs
  - Sub-base adapts to service conduit, circuit breakers and receptacles up to 30 amps

Kit No.	Sub-Base	Circuit Ampacity	Chaseway	Power Cord
RAK204E15C	Sub-Base 265V	15	Included	Included
RAK204E20C	Sub-Base 265V	20	Included	Included
RAK204E30C	Sub-Base 265V	30	Included	Included



- RAK205CW**  
**Chaseway**
- For wiring containment between junction box on chassis and RAK204U sub-base

Available while quantities last



- RAK204SW**  
**Disconnect Switch For Use In Sub-Base**
- Fits directly into sub-base
  - Comes with switch pre-mounted in replacement plate and wiring shown.
  - DPST switch rated for use in 230/208 volt and 265-volt sub-bases
  - For use on 15, 20, and 30-amp applications

ZONELINE® Accessories  
Power Cords/Connections (For AZES-AZHS-AZVS Series)



- RAK315P/320P/330P†**  
RAK320P shown  
**230/208-Volt Universal Power Cord Kit**
- Six-foot power cord with LCDI
  - 4-pin connector
  - Low-voltage personality plug on 20 amp and 30 amp kits

Kit No.	Volts	Heater Wattage	Circuit Ampacity
RAK315P	230/208	2.4/1.96 kw	15
RAK320P	230/208	3.4/2.8 kw	20
RAK330P	230/208	4.8/3.99 kw	30



- RAK315SP/320SP/330SP†**  
RAK315SP shown  
**230/208-Volt Universal Short Power Cord Kit**
- Three-foot power cord without LCDI
  - 4-pin connector
  - Low-voltage personality plug on 20 amp and 30 amp kits
  - Only for use in 230/208 volt sub-bases with new Series A, AZ units
  - Requires the purchase of RAK4002D junction box

Kit No.	Volts	Heater Wattage	Circuit Ampacity
RAK315SP	230/208	2.4/1.96 kw	15
RAK320SP	230/208	3.4/2.8 kw	20
RAK330SP	230/208	4.8/3.99 kw	30



- RAK515P/520P/530P†**  
RAK520P shown  
**265 Volts Universal Power Supply**
- Three-foot power cord without LCDI
  - 4-pin connector
  - Low-voltage personality plug on 20 amp and 30 amp kits
  - Only for use in 265 volt sub-bases with new Series A, AZ units

Kit No.	Volts	Heater Wattage	Circuit Ampacity
RAK515P	265	2.4 kw	15
RAK520P	265	3.4 kw	20
RAK530P	265	4.8 kw	30



- RAK315D/320D/330D†**  
RAK320D shown  
**230/208-Volt Direct Connect Power Supply Kit**
- 4-pin connector with three 7" 12-gauge conductor wires and low-voltage personality plug on 20 amp and 30 amp kits
  - Requires the purchase of RAK4002D junction box

Kit No.	Volts	Heater Wattage	Circuit Ampacity
RAK315D	230/208	2.4/1.99 kw	15
RAK320D	230/208	3.4/2.8 kw	20
RAK330D	230/208	4.8/3.99 kw	30



- RAK515D/520D/530D†**  
RAK520D shown  
**265-Volt Universal Direct Connect Power Supply Kit**
- 4-pin connector with three 7" 12-gauge conductor wires and low-voltage personality plug on 20 amp and 30 amp kits

Kit No.	Volts	Heater Wattage	Circuit Ampacity
RAK515D	265	2.4 kw	15
RAK520D	265	3.4 kw	20
RAK530D	265	4.8 kw	30

†Heater wattage may vary slightly among models. 30-amp heater wattage is reduced in low fan operation.

**ZONELINE® Accessories**  
**Replacement Parts (For AZES-AZHS-AZVS Series)**

**RAK4002D**  
**Direct-Connect Junction Box Wiring**  
**(230/208 & 265 Volts)**

- Kit for direct connection of 230/208-volt and 265-volt units to building power supply (via sub base or direct connect)
- Junction box is included on 265-volt units



**RAA65**  
**Replacement Filters**

- One pair per box
- Sold in pairs
- Conveniently accessible through the front of the unit



**RAA13Z**  
**MERV 13 Makeup Air Filter**

- When required by code for Makeup Air products (California 01-01-2020)
- Includes one filter



**RAKCDC**  
**CDC Wiring Connector**

- 3-wire connector
- Works with Central Desk Control system and through wall fan option
- External fan option
- For use with Makeup Air units and approved occupancy sensing thermostats



- SHCM10PK/SHCM10PKC**  
**SmartHQ™ Home Connect Module— 10 pack**
- Single module shown — sold in packs of 10
  - Connects to unit and uses local non-captive Wi-Fi network.
  - Provides individual remote control or Remote fleet management through SmartHQ management
  - Allows for site error notifications
  - Receive and install software updates\*

\*For full features visit [www.smarthqsolutions.com](http://www.smarthqsolutions.com)



**ZONELINE®**  
**Thermostats**



**RAK190V** WITH PERFECT CONTROL TECHNOLOGY  
**Energy Management Thermostat**  
**2-Way Communication**  
**Configuration: For Use With AZVS Models Only**

- Full range true variable speed inverter control capability
- Makeup Air occupancy control (when paired with MUA 2-way capable models)
- 4 wire hookup (via traditional T-stat wire)
- Enhanced humidity sensing
- Set mode/temp on the thermostat, unit or via SmartHQ™\* online tools
- Compatible with SmartHQ™\*\* management (For site-wide fleet management: WiFi-enabled unit control, setting adjustments, & room status updates)

- 1-Way Communication**  
**Configuration: For Use With AZ45/65, AZES/AZHS Models**
- Works with all traditional 6, 7, and 8 wire setups
  - Occupancy sensing setting & energy savings offsets
  - Attractive cap touch display, easy to clean
  - Large white LED display is bright and easy to read
  - Auto dimming (Night time)
  - 2 configurable Aux 24VAC Outputs to control Makeup Air, lighting, aux fans, etc.



- RAK150VF2**  
**2-Stage Cool/Heat Thermostat**
- 2 Compressor speeds and 2 fan speeds, wired thermostat for Inverter VTAC
  - Standard 24V 8 wire setup
  - Works with Perfect Control Inverter Capable GEA VTAC units to allow for variable speed control
  - 2 Fan Speeds
  - Push in spring clip wiring for easy and fast installation
  - Customizable temperature limits and differentials



- RAK149F2A**
- Two fan speed dual use digital thermostat - Can be set up for single-stage or two-stage heat (AZ45/65, AZES/AZHS)
  - 24V AC wired remote wall thermostat
  - Heat pump configured as default
  - Requires 6-wire hookup for single-stage heat and 7-wires for two-stage heat
  - For use on fixed speed models only



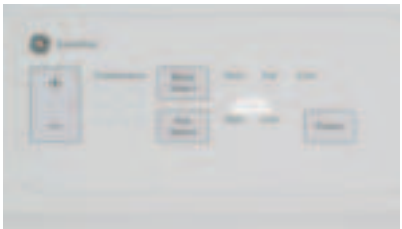
- RAK149P2A**
- Programmable dual use digital thermostat - Can be set up for single-stage or two-stage heat (AZ45/65, AZES/AZHS)
  - Programmable for 7-day or 5+2-day programs
  - 24V AC wired remote wall thermostat
  - Heat pump configured as default
  - Requires 5-wire hookup for single-stage heat and 6-wires for two-stage heat
  - For use on fixed speed models only



- RAK160W2**  
**Wireless Thermostat With Two Fan Speeds**
- 2-wire power connection optional (all other signals are wireless)
  - Thermostat (shown) – Also comes with plug and play control card
  - Works off 24 Volt AC signal from unit
  - Works with single-stage cooling and either single-stage or two-stage heating. Default is two-stage heating and B-type heat pump
  - For use with AZ45/65, AZES/AZHS



- RAK180W1**  
**Energy Management Occupancy Sensing Wired/Wireless Thermostat**  
**Makeup Air Compatible**
- 2-wire power connection available (all other signals wireless)
  - Thermostat (shown) and control card plug and play included
  - Control card works off 24 Volt AC
  - Works with single-stage cooling and single-stage or two-stage heating systems with proper set up. AZES or AZHS
  - Extra 24V relay for controlling GE Zoneline Makeup Air duct door when room is unoccupied for additional energy savings
  - Output may be programmed to control other room systems such as lighting, vents, etc.
  - For use with AZ45/65, AZES/AZHS



**Wall Thermostat**  
When installed with a remote Thermostat, a key press will illuminate "Use Wall Thermostat." The LED will dim down after a few seconds and then turn off after a few minutes as to not disturb the guest in a dark room.

Additional thermostat options are available for specialty lighting and energy management applications. Contact your GEA rep for more details.

\*Requires purchase of additional SmartHQ™ Connect Module

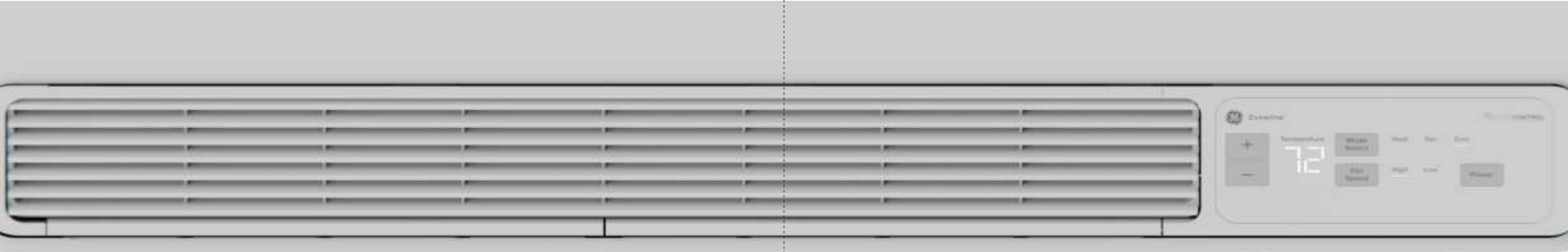
\*\*Requires purchase of additional SmartHQ™ Connect Module and subscription service

Number	Description
RAA13Z	MERV 13 Replacement Air Filter for AZVS Makeup Air models
RAA65	Replacement Filters for AZES, AZHS, AZVS
RAB42MG	Quick Snap Wall Sleeve- Metal Grey White
RAB42MGSTC	Acoustic Wall Sleeve
RAB42PG	Quick Snap Wall Sleeve-Plastic Grey
RAB4216MG	Quick Snap Wall Sleeve 16" extended depth - Metal Grey White
RAB4218MG	Quick Snap Wall Sleeve 18" extended depth - Metal Grey White
RAB4220MG	Quick Snap Wall Sleeve 20" extended depth - Metal Grey White
RAB4224MG	Quick Snap Wall Sleeve 24" extended depth - Metal Grey White
RAD10	Internal/external drain kit
RAG42AA	Zoneline Architectural Rear Grille - Aluminum
RAG42PB	Zoneline Grille in Beige Plastic
RAG42PD	Zoneline Architectural Rear Grille in Dark Brown Plastic
RAG60	Stamped Aluminum Exterior Rear Grille
RAG61	Architectural Rear Grille, Beige
RAG62	Architectural Rear Grille, Maple
RAG63	Architectural Rear Grille, Dark Brown
RAK40	Air Deflector Kit
RAK44	PTAC Curtain Guard (5 Pack)
RAK4002D	Direct-connect junction box 230/208V for 45 & 65 models ending in W5 or higher and A series

Thermostats

NUMBER	DESCRIPTION
RAK149F2A	Digital 2 fan speed thermostat for AZ45/65, AZES/AZHS
RAK149P2A	Programmable thermostat for AZ45/65, AZES/AZHS
RAK150VF2	Up to 3 heat/2 cool, digital 2 fan speed thermostat for AZVS (also compatible with AZ45/65, AZES/AZHS)
RAK160W2	Wireless two fan speed thermostat for AZ45/65, AZES/AZHS
RAK180W1	Energy management/occupancy sensing wireless thermostat – Makeup Air compatible for AZ45/65, AZES/AZHS
RAK190V	Energy management thermostat 1-way/2-way communication configuration
RAKTK8PA1	AZES/AZHS thermostat connector (for 3rd party thermostats)
RAKTK8PA10	10 pack of AZES/AZHS thermostat connector (for 3rd party thermostats)
RAKTK8W1	AZVS thermostat connector (for 3rd party thermostats)
RAKTK8W10	10 pack of AZVS thermostat connector (for 3rd party thermostats)

Number	Description
RAK315P	Universal power supply, 15 amp with 6' power cord
RAK320P	Universal power supply, 20 amp with 6' power cord
RAK330P	Universal power supply, 30 amp with 6' power cord
RAK315D	230/208V Universal power supply, 15 amp
RAK320D	230/208V Universal power supply, 20 amp
RAK330D	230/208V Universal power supply, 30 amp
RAK515D	265V Universal power supply, short 15 amp
RAK520D	265V Universal power supply, short 20 amp
RAK530D	265V Universal power supply, short 30 amp
RAK315SP	230/208V Universal power supply, short, 15 amp, 3' cord for sub-base use only
RAK320SP	230/208V Universal power supply, short, 20 amp, 3' cord for sub-base use only
RAK330SP	230/208V Universal power supply, short, 30 amp, 3' cord for sub-base use only
RAK515P	265V Universal power supply, 15 amp, 3' cord for sub-base use only
RAK520P	265V Universal power supply, 20 amp, 3' cord for sub-base use only
RAK530P	265V Universal power supply, 30 amp, 3' cord for sub-base use only
RAK205CW	Chaseway for RAK204U sub-base
RAK204D15C	230/208V, 15 amp sub-base with power cord
RAK204D20C	230/208V, 20 amp sub-base with power cord
RAK204D30C	230/208V, 30 amp sub-base with power cord
RAK204E15C	265V, 15 amp sub-base with power cord
RAK204E20C	265V, 20 amp sub-base with power cord
RAK204E30C	265V, 30 amp sub-base with power cord
RAK204U	Sub-base without electrical devices or wiring
RAK601B	Duct extension (Includes RAK602B)
RAK602B	Air register and trim flange
RAK6053	Duct adapter for new installations AZ45/65, AZES, AZHS, AZVS only
RAK7013	Duct adapter AZ45/65, AZES, AZHS, AZVS with existing ductwork measuring 8 3/8" H x 6 1/2" W
RAK7023	Duct transition for replacement of new units and existing ductwork measuring 7 3/32" x 6 1/2"W for AZ45/65, AZES, AZHS, AZVS
RAKCDC	CDC Wiring Connector for AZ45/65, AZES, AZHS, AZVS (Also used with occupancy thermostats for Makeup Air)
RAKVENT1	Vent manifold for AZ45/65/AZES/AZHS (excludes Makeup Air and ICR models)
RAA13	Replacement filter for RAK13
RAK13	MERV 13 filter kit for AZ45/65 Makeup Air models (California 1-1-2020)
SHCM10PK SHCM10PKC	SmartHQ™ Home Connect Module (10 pack)





ZONELINE® Perfect Control Packaged Terminal Heat Pump Specifications

WITH PERFECT CONTROL TECHNOLOGY Variable Speed Heat Pump with Corrosion Protection (230/208V)

	AZVS15DCXWA	AZVS15DMXWA
Features		
EER	11.0/10.9	11.0/10.9
SEER nominal	16+	16+
COP Nominal	3.4	3.4
HSPF nominal	7	7
Cooling BTU (Rated)	14300/14200	14300/14200
Cooling BTU Range	4000-15000	4000-15000
Heat Pump BTU (Rated)	13500/13500	13500/13500
Heat Pump BTU Range	4000-14000	4000-14000
AHRI	Yes	Yes
Rated Voltage	230/208	230/208
Refrigerant Type	R454B	R454B
Cooling Amps	6.3	6.3
Cooling Watts	1345.0	1345.0
Heat Pump Amps	5.5	5.5
Heat Pump Watts	1165.0	1165.0
Sensible heat ratio @ rated volts (low cool 230V)	75%	75%
Vent CFM Hi Fan Only	45	NA
Makeup Air airflow range (CFM)	NA	25-50
Power Factor	.95 min	.95 min
Integrated WiFi (SmarthQ® ready)	YES	YES
Adjustable make up air w/ optional occupancy control	NA	YES
Variable Capacity (Inverter) Compressor/dual EEV system	YES	YES
Dual Variable speed EC fan motors	YES	YES

WITH PERFECT CONTROL TECHNOLOGY Variable Speed Heat Pump with Corrosion Protection (265V)

	AZVS15ECXWA	AZVS15ERXWA	AZVS15EMXWA
Features			
EER BTUH	11	11	11
SEER nominal	16+	16+	16+
COP Nominal	3.4	3.5	3.4
HSPF nominal	7	7	7
Cooling BTU (Rated)	14300	14300	14300
Cooling BTU Range	4000-15000	4000-15000	4000-15000
Heat Pump BTU (Rated)	13500	14000	13500
Heat Pump BTU Range	4000-14000	4000-14000	4000-14000
AHRI	Yes	Yes	Yes
Rated Voltage	265	265	265
Refrigerant Type	R454B	R454B	R454B
Cooling Amps	6.3	6.3	6.3
Cooling Watts	1345.0	1345.0	1345.0
Heat Pump Amps	5.5	5.5	5.5
Heat Pump Watts	1165.0	1165.0	1165.0
Sensible heat ratio @ rated volts (low cool 230V)	75%	75%	75%
Vent CFM Hi Fan Only	45	45	NA
Makeup Air airflow range (CFM)	NA	NA	25-50
Power Factor	.95 min	.95 min	.95 min
Integrated WiFi (SmarthQ® ready)	YES	YES	YES
Adjustable make up air w/ optional occupancy control	NA	NA	YES
Variable Capacity (Inverter) Compressor/dual EEV system	YES	YES	YES
Internal Condensate Removal (ICR)	NO	YES	NO
Heat Pump (down to 0°F) w/ supplemental resistance heat	YES	No, 25°F	YES
Weight (Net/Ship)	90/100	90/100	90/100

Specifications subject to change.

NOTE: Resistance heater wattage and amperage dependent on power connection kit. See page 6.



Listed by Underwriters Laboratories



ZONELINE® Packaged Terminal Air Conditioner Specifications

Fixed Speed Electric Heat with Corrosion Protection (230/208V)

	AZES07DCXXA	AZES09DCXXA	AZES12DCXXA	AZES15DCXXA
Features				
EER	13.2 / 13.4	12.3 / 12.5	11.6 / 11.7	10.5 / 10.6
Cooling BTU	7200 / 7200	9500 / 9500	12100/12000	14800/14500
AHRI	Yes	Yes	Yes	Yes
Rated Voltage	230/208	230/208	230/208	230/208
Refrigerant Type	R454B	R454B	R454B	R454B
Dehumidification (Pts/Hr) (Minimum) (High speed)	1.2	2.2	3.3	4.5
Cooling Amps	2.6 / 2.8	3.6 / 3.9	4.7/5.1	6.3/6.8
Cooling Watts	545 / 535	770 / 755	1035 / 1020	1400 / 1365
Power Factor	.95 minimum	.95 minimum	.95 minimum	.95 minimum
Sensible heat ratio @ rated volts (low cool 230V)	75%	75%	75%	75%
Vent CFM Hi Fan Only	32*	34*	36*	39*
Chassis with RAB42 Sleeve Height, Inches	16	16	16	16
Chassis with RAB42 Sleeve Width, Inches	42	42	42	42
Chassis with RAB42 Sleeve Depth, Inches	20-13/16	20-13/16	20-13/16	20-13/16
Heat Pump with Resistance Heat Backup	NA	NA	NA	NA
Heat Pump with Supplemental Resistance Heat	NA	NA	NA	NA
Heat Pump Defrost System	NA	NA	NA	NA
Internal Condensate Removal (ICR)	No	No	No	No
Weight (Net/Ship)	90/100	90/100	90/100	90/100

Fixed Speed Heat Pump with Corrosion Protection (230/208V)

	AZHS07DCXXA	AZHS09DCXXA	AZHS12DCXXA	AZHS15DCXXA
Features				
EER BTUH	13.0 / 13.2	12.4 / 12.4	11.6 / 11.6	10.4 / 10.4
COP	3.9 / 4.1	3.7 / 3.8	3.6 / 3.7	3.3 / 3.4
Cooling BTU	7200 / 7100	9700 / 9600	12000 / 11900	15100 / 14700
Heat Pump BTU	6200 / 6200	8000 / 7900	10600 / 10600	13500 / 13300
AHRI	Yes	Yes	Yes	Yes
Rated Voltage	230/208	230/208	230/208	230/208
Refrigerant Type	R454B	R454B	R454B	R454B
Dehumidification (Pts/Hr) (Minimum) (High speed)	0.9	2.0	3.1	4.1
Cooling Amps	2.6 / 2.8	3.6 / 3.9	4.7 / 5.1	6.7 / 7.1
Cooling Watts	550 / 535	780 / 770	1030 / 1020	1450 / 1410
Heat Pump Amps	2.3 / 2.5	3.0 / 3.2	3.7 / 3.5	5.6 / 6.0
Heat Pump Watts	455 / 440	625 / 600	855 / 825	1180 / 1125
Power Factor	.95 minimum	.95 minimum	.95 minimum	.95 minimum
Sensible heat ratio @ rated volts (low cool 230V)	75%	75%	75%	75%
Vent CFM Hi Fan Only	32*	36*	39*	42*
Chassis with RAB42 Sleeve Height, Inches	16	16	16	16
Chassis with RAB42 Sleeve Width, Inches	42	42	42	42
Chassis with RAB42 Sleeve Depth, Inches	20-13/16	20-13/16	20-13/16	20-13/16
Heat Pump down to 25°F w/supplemental resistance heat	Yes	Yes	Yes	Yes
Heat Pump Defrost System	Yes	Yes	Yes	Yes
Weight (Net/Ship)	90/100	90/100	90/100	90/100

\*Using RAKVENT1 kit

ZONELINE® Packaged Terminal Heat Pump Specifications

Fixed Speed Heat Pump with ICR (230/208V)

	AZHS07DRXXA	AZHS09DRXXA	AZHS12DRXXA	AZHS15DRXXA
Features				
EER	13.0 / 13.1	12.4 / 12.4	11.6 / 11.6	10.4 / 10.4
COP	4.1 / 4.2	3.8 / 3.9	3.7 / 3.8	3.4 / 3.5
Cooling BTU	7200 / 7100	9700 / 9600	12100 / 11900	15100 / 14700
Heat Pump BTU	6500 / 6400	8100 / 7900	11000 / 10000	14000 / 13800
AHRI	Yes	Yes	Yes	Yes
Rated Voltage	230/208	230/208	230/208	230/208
Refrigerant Type	R454B	R454B	R454B	R454B
Dehumidification (Pts/Hr) (Minimum) (High speed)	0.9	2.0	3.1	4.1
Cooling Amps	2.6 / 2.8	3.6 / 3.9	4.7 / 5.1	6.7 / 7.1
Cooling Watts	550 / 540	780 / 770	1030 / 1020	1450 / 1410
Heat Pump Amps	2.3 / 2.5	3.0 / 3.2	3.7 / 3.5	5.6 / 6.0
Heat Pump Watts	460 / 440	620 / 595	855 / 830	1185 / 1135
Power Factor	.95 minimum	.95 minimum	.95 minimum	.95 minimum
Sensible heat ratio @ rated volts (low cool 230V)	75%	75%	75%	75%
Vent CFM Hi Fan Only	36.8	41.3	43.2	47.5
Chassis with RAB42 Sleeve Height, Inches	16	16	16	16
Chassis with RAB42 Sleeve Width, Inches	42	42	42	42
Chassis with RAB42 Sleeve Depth, Inches	20-13/16	20-13/16	20-13/16	20-13/16
Heat Pump down to 25°F w/ supplemental resistance heat	Yes	Yes	Yes	Yes
Heat Pump Defrost System	Yes	Yes	Yes	Yes
Internal Condensate Removal (ICR)	Yes	Yes	Yes	Yes
Weight (Net/Ship)	90/100	90/100	90/100	90/100

Fixed Speed Heat Pump (265V) with Corrosion Protection

	AZHS07ECXXA	AZHS09ECXXA	AZHS12ECXXA	AZHS15ECXXA
Features				
EER	12.7	12.1	11.4	10.4
COP	4.0	3.5	3.6	3.4
Cooling BTU	7100	9400	12000	14600
Heat Pump BTU	6100	8000	10500	13500
AHRI	Yes	Yes	Yes	Yes
Rated Voltage	265	265	265	265
Refrigerant Type	R454B	R454B	R454B	R454B
Dehumidification (Pts/Hr) (Minimum) (High speed)	0.9	1.9	3.0	4.2
Cooling Amps	2.3	3.3	4.4	5.4
Cooling Watts	555	775	1045	1395
Heat Pump Amps	1.9	2.8	3.7	4.5
Heat Pump Watts	440	660	850	1145
Power Factor	.95 minimum	.95 minimum	.95 minimum	.95 minimum
Sensible heat ratio @ rated volts (low cool 230V)	75%	75%	75%	75%
Vent CFM Hi Fan Only	32*	36*	39*	42*
Chassis with RAB42 Sleeve Height, Inches	16	16	16	16
Chassis with RAB42 Sleeve Width, Inches	42	42	42	42
Chassis with RAB42 Sleeve Depth, Inches	20-13/16	20-13/16	20-13/16	20-13/16
Heat Pump down to 25°F w/ supplemental resistance heat	Yes	Yes	Yes	Yes
Heat Pump Defrost System	Yes	Yes	Yes	Yes
Weight (Net/Ship)	90/100	90/100	90/100	90/100

Specifications subject to change.

NOTE: Resistance heater wattage and amperage dependent on power connection kit. See page 6 .

\*Using RAKVENT1 kit



How to Order

It's easy to order Zoneline, and Zoneline Parts & Accessories

Call or go online to get the products, parts and accessories you need from GE Appliances.

ZONELINE.COM | GEAPPLIANCES.COM | GEAPPLIANCEPARTS.COM | 844.GE4.PTAC – GE FACTORY SERVICE

Order GE Appliances Parts Direct

When you order GE Appliances Parts direct, you'll be backed by quality and support you can count on:

- Original genuine parts
- Limited 1-year warranty
- Discounts and promotions
- Access to illustrated parts catalog
- Check status and availability

Apply for credit, speak to a GE Appliances Parts Specialist or buy genuine GE Appliances Parts at:

GECUSTOMERNET.COM | 800.851.6200

Your Product Information:

Locate your Zoneline's serial number:

- Remove cover
- Find the base pan, located at the bottom of the unit
- Serial number will be printed on the base pan

My Account Number

My Sales Manager

Contact us for a quote today:  
hospitality.direct@geappliances.com



## ZONELINE® Warranty

### For The Period of

#### One Year

From the date of the original purchase

### GE Appliances will replace

Any part of the air conditioner which fails due to a defect in materials or workmanship. During this limited one-year warranty, GE will provide, free of charge, all labor and related service costs to replace the defective part.

#### Five Years

From the date of the original purchase

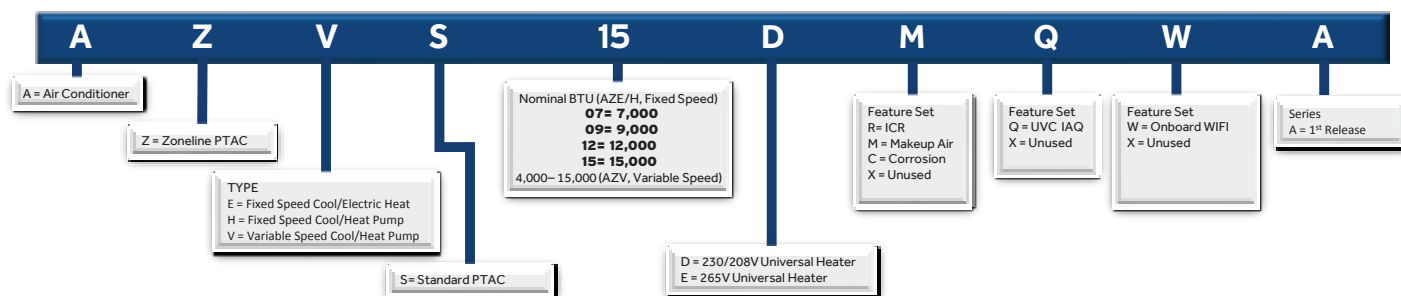
Sealed Refrigerating System—if any part of the Sealed Refrigerating System (the compressor, condenser, evaporator, and all connecting tubing, including the Makeup Air system) should fail due to a defect in materials or workmanship. During this limited five-year warranty, GE will provide, free of charge, all labor and related service costs to replace the defective part.

#### Second Through Fifth Year

From the date of the original purchase

Fan Motors, Switches, Heater, Heater Protectors, Compressor Overload, Solenoids, Circuit Boards, Auxiliary Controls, Thermistors, Freeze Sentinel, Frost Controls, ICR Pump, Capacitors, Varistors and Indoor Blower Bearing, if any of these parts should fail due to a defect in materials or workmanship. During this additional four-year limited warranty, GE will provide the replacement part free of charge. The customer will be responsible for any labor and related service costs.

## ZONELINE® Perfect Control Chassis Nomenclature



Listed by  
Underwriters  
Laboratories



**GE APPLIANCES**  
a Haier company

GE is a trademark of the General Electric Company.  
Manufactured under trademark license.

Appliance Park  
Louisville, KY 40225  
zoneline.com

Pub No. 27-D0107-24  
OTGEA6226633453