

LEFTON[®]

INSTALLATION MANUAL

Stainless Steel Workstation Hidden Bar & RV Sink

**BS2502
(Topmount Installation)**

Congratulations on the purchase of your new Lefton Kitchen Sink!

Please keep the box and packaging materials until your product is completely installed. If you have any questions, require technical assistance, or have any problems with your product, please get in touch with our Customer Service at customer@Leftonhome.com.

Tools Required



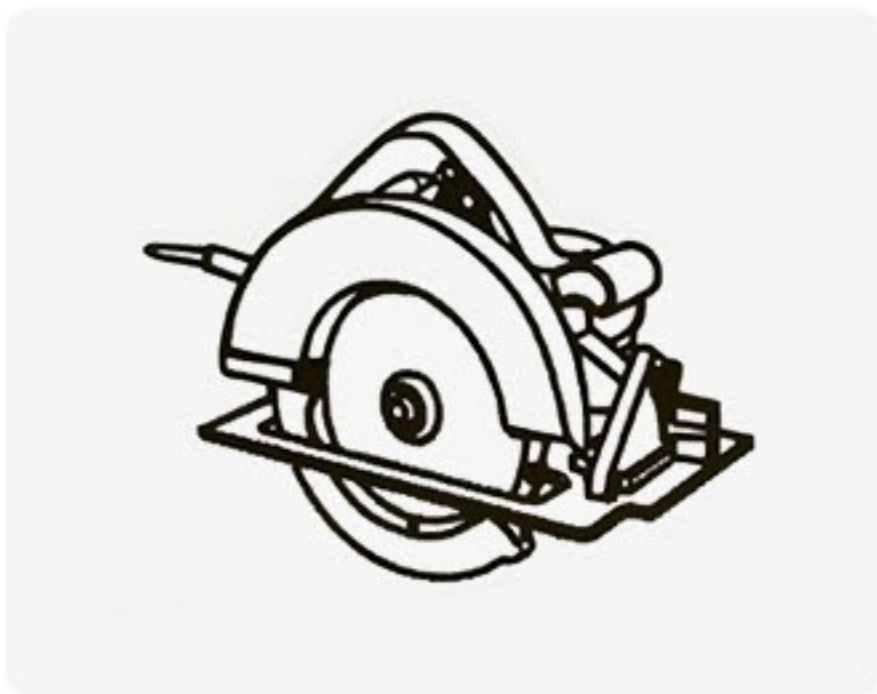
Safety Goggles



Pipe Tape



Epoxy



Saw



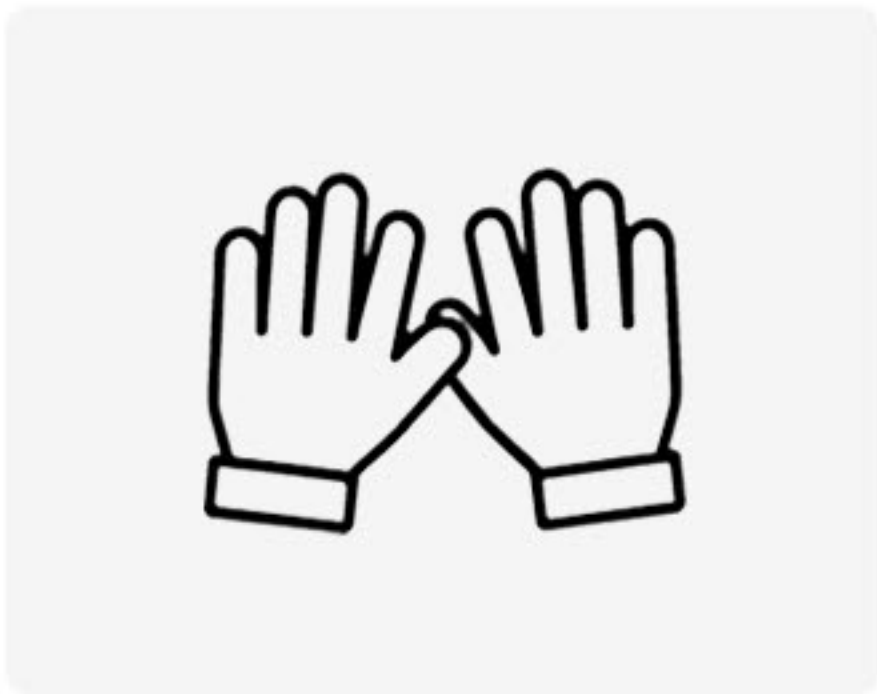
Adjustable Wrench



Tape Measure



Pencil



Gloves

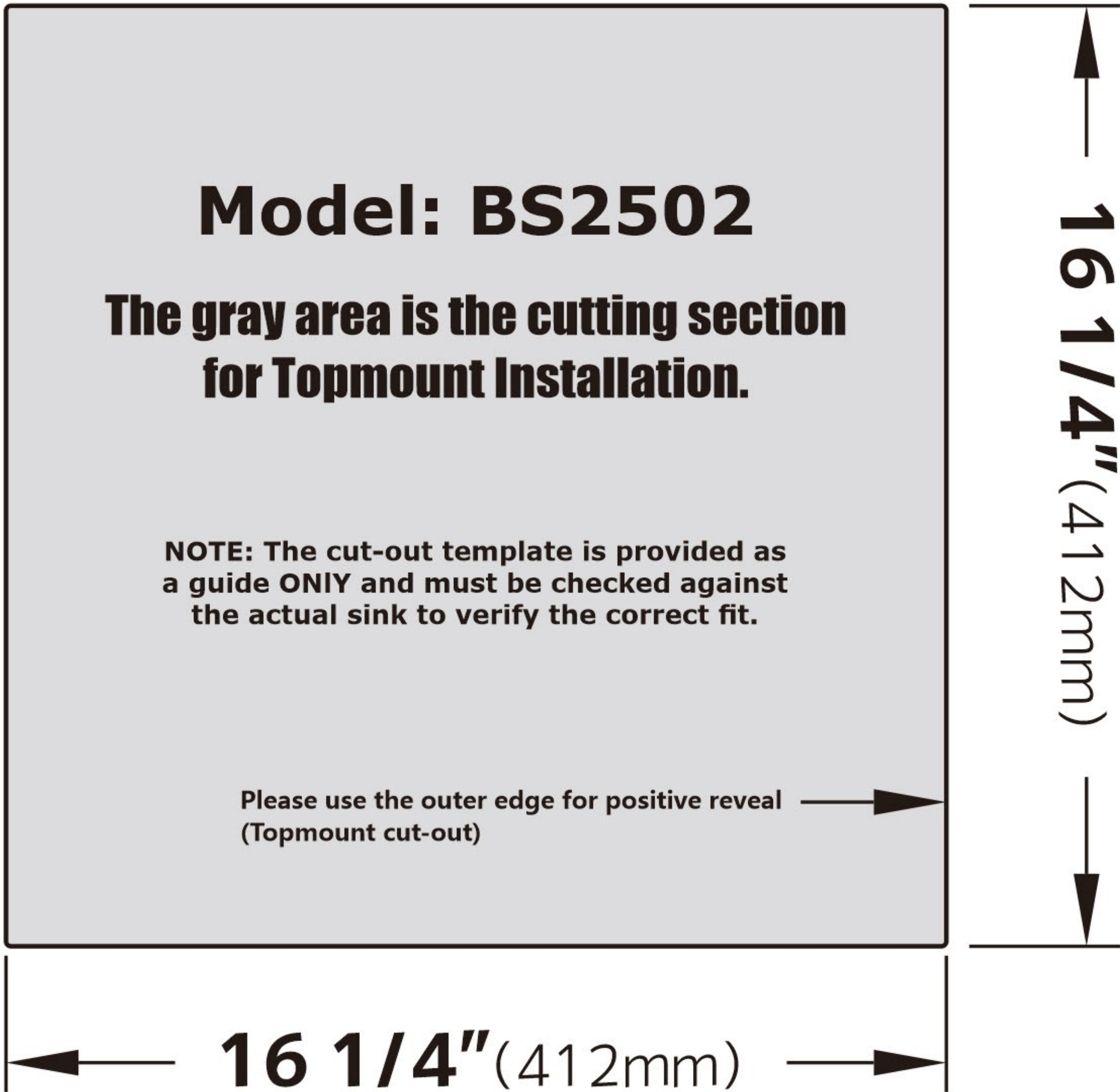


Phillips Screwdriver

NOTE: Specialized tools may be necessary to install LEFTON Stainless Steel Kitchen sinks with countertop materials other than wood, marble or granite.

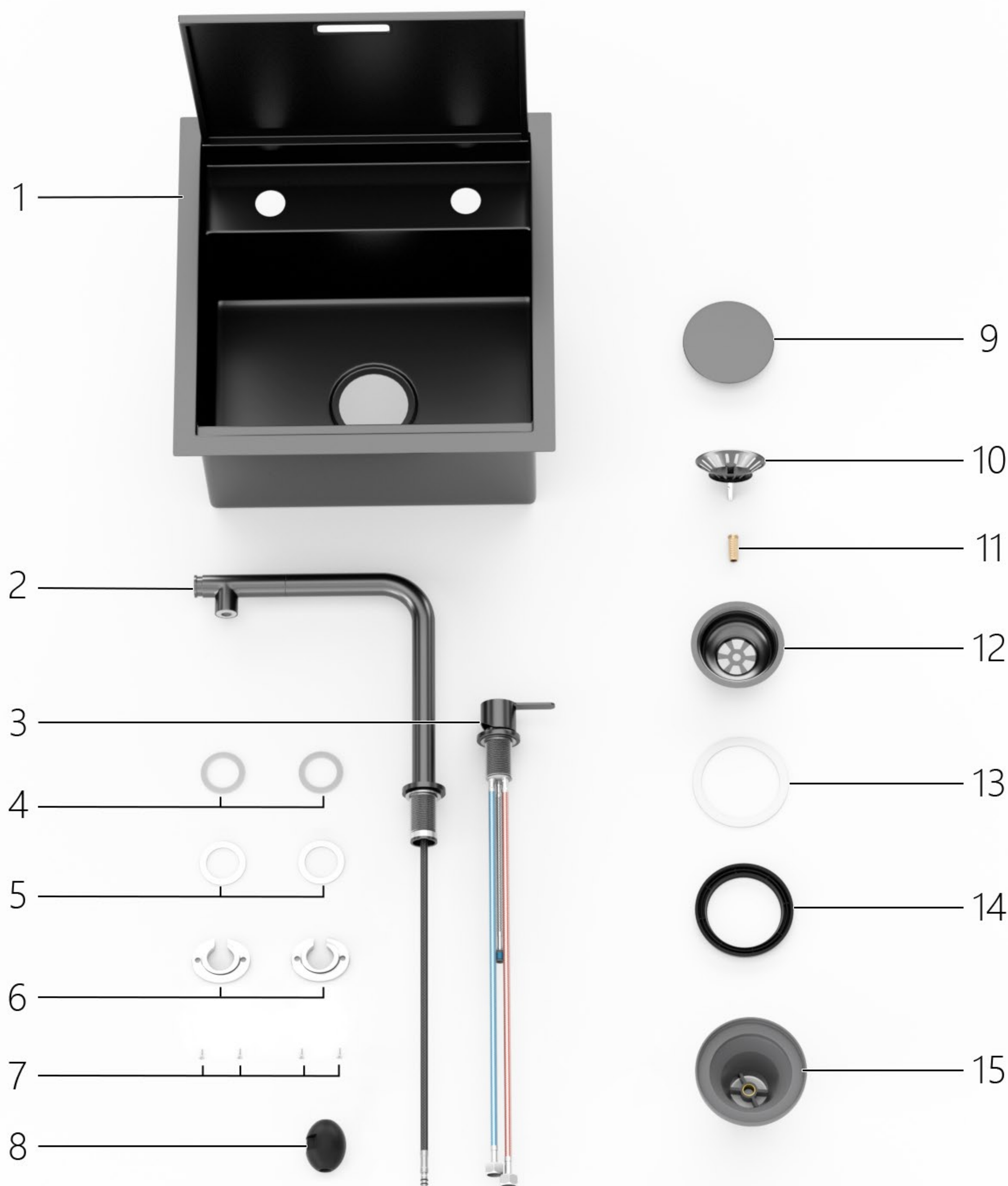
Cut-Out Template

BS2502



NOTE: Cut-out templates for sinks can be downloaded from our website.

Parts List



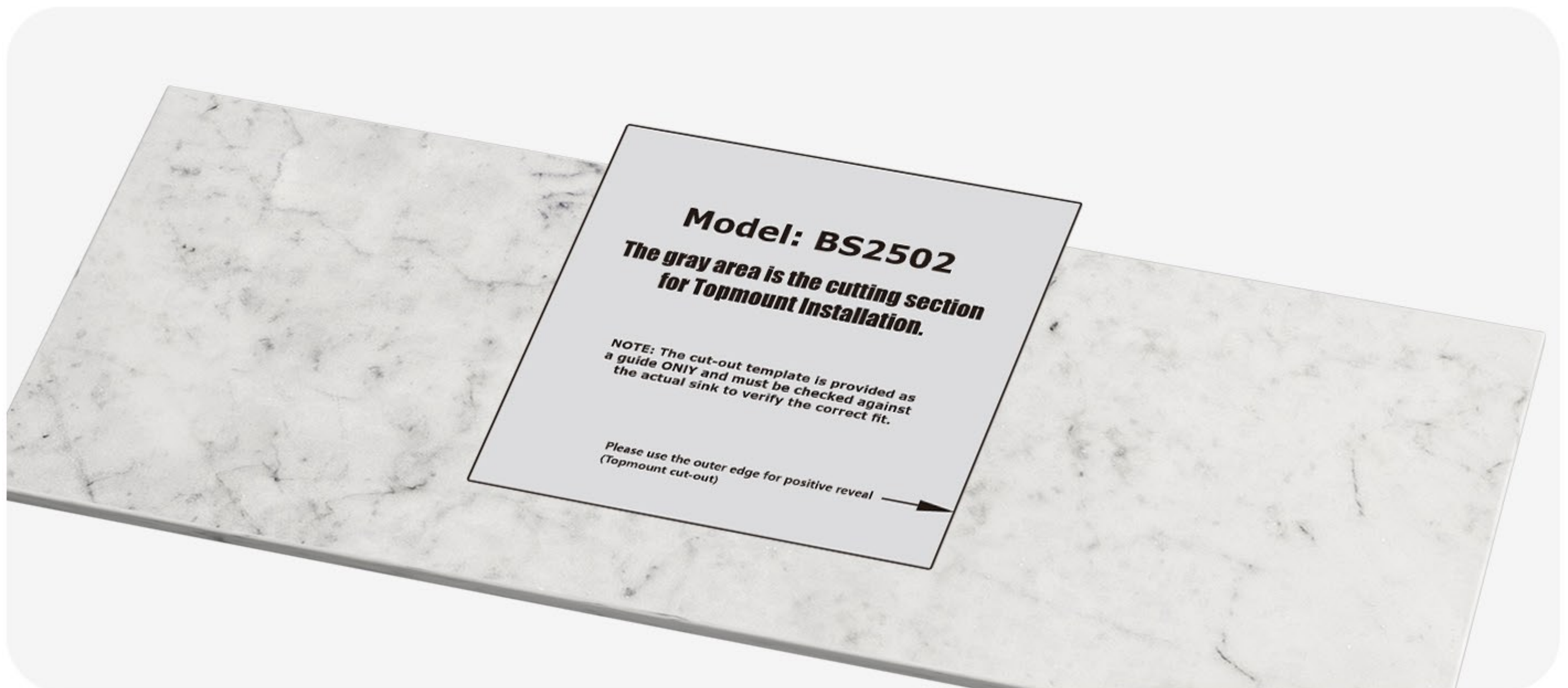
- 1. Sink Bowl
- 2. Faucet
- 3. Temperature Control Handle
- 4. Rubber Gaskets
- 5. Metal Gaskets
- 6. Mounting Nuts
- 7. Bolts
- 8. Hose Weight

- 9. Drain Hole Cover
- 10. Strainer Basket
- 11. Drain Housing Screw
- 12. Strainer
- 13. White Gasket
- 14. Rubber Gasket
- 15. Drain Housing

Topmount Installation

Step 1. Position Template

- Check the cut-out template against the actual sink to ensure a proper sized cut-out.
- Place the cut-out template in the desired location on the countertop.



Step 2. Trace Template

- Trace the template on the countertop with a pencil.
- The gray area is the cutting section.



Step 3. Cut Countertop

- Cut the opening in the countertop by carefully following the traced line.



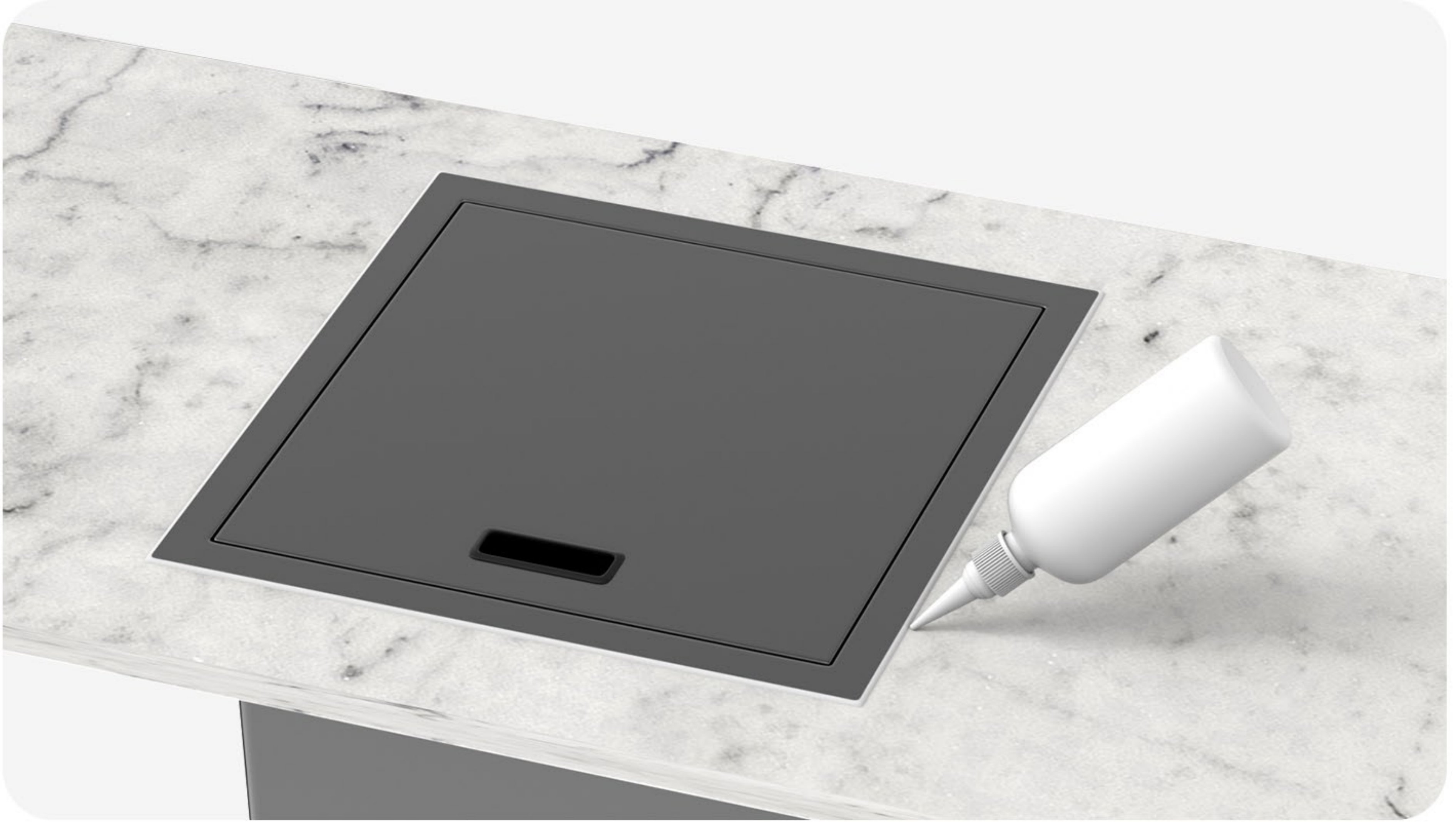
Step 4. Place the Sink

- Place the sink into the pre-cut hole on the countertop.



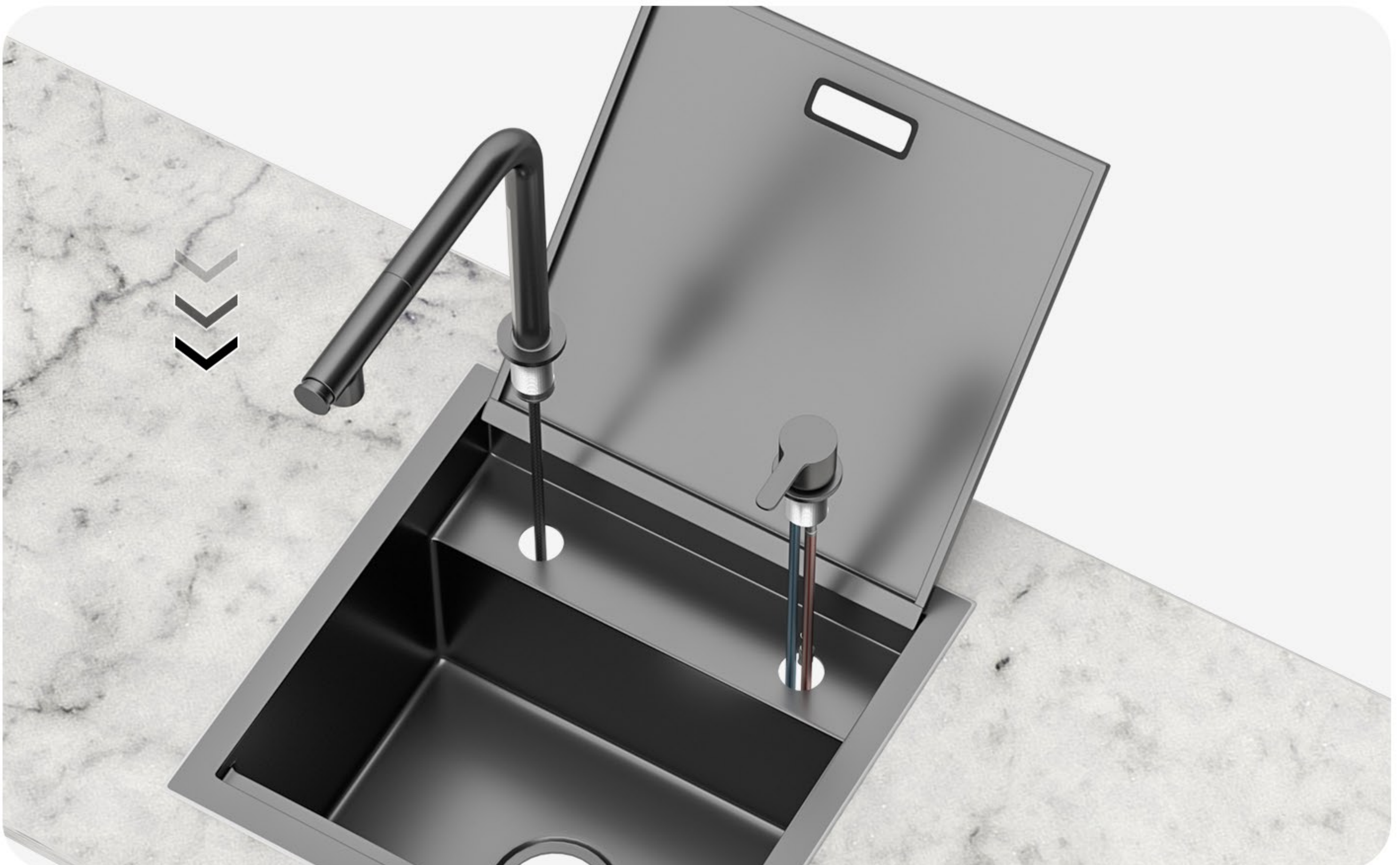
Step 5. Secure the Sink to the Countertop

- Clean the countertop and the top rim of the sink.
- Use a bead of epoxy (or preferred adhesive) around the rim of the sink.



Step 6. Place the Faucet and Handle

- Place the faucet and handle into the respective holes of the sink.



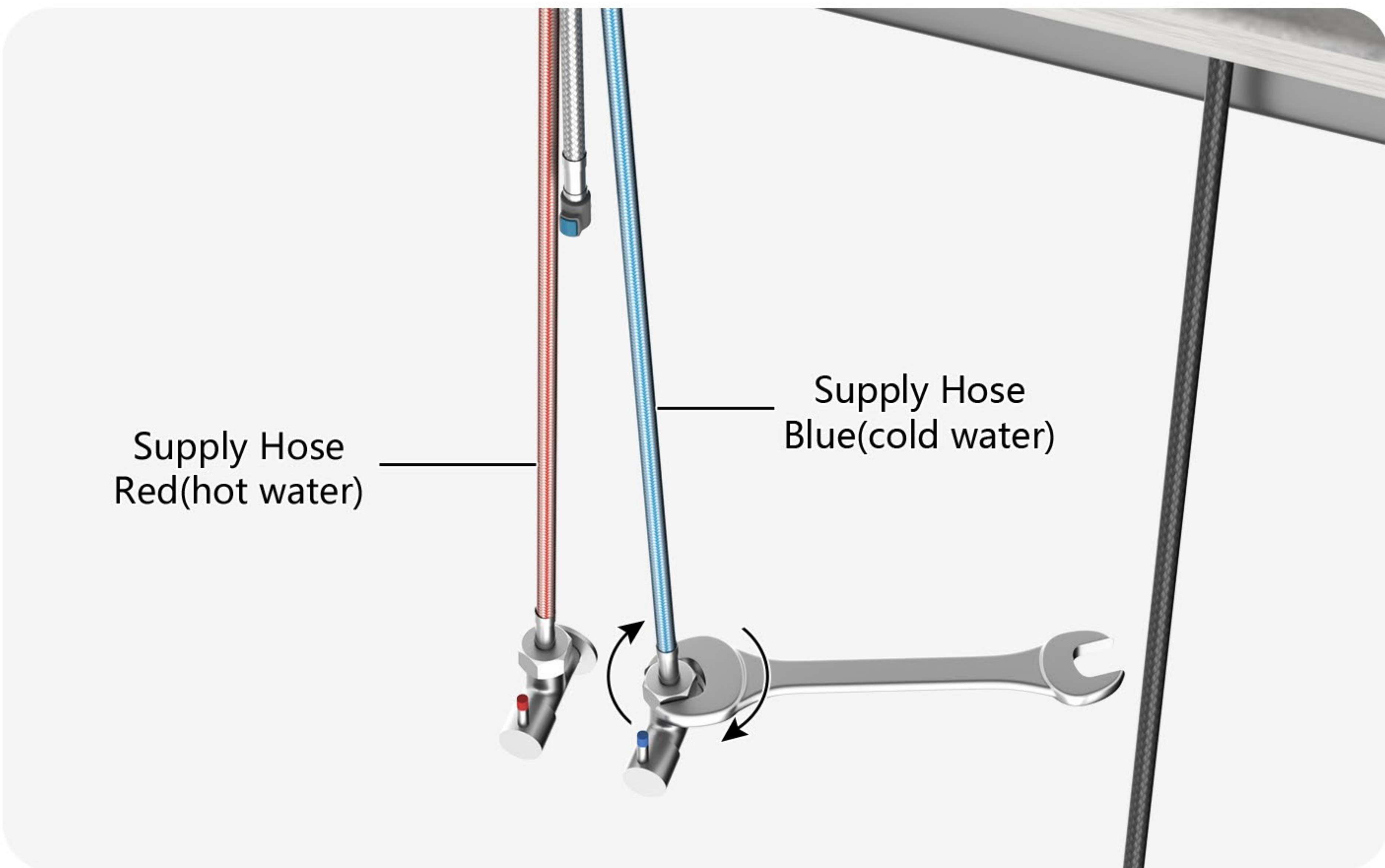
Step 7. Secure the Faucet and Handle

- Install the accessories onto every part in the correct order as shown, and tighten the bolts with a Phillips screwdriver.



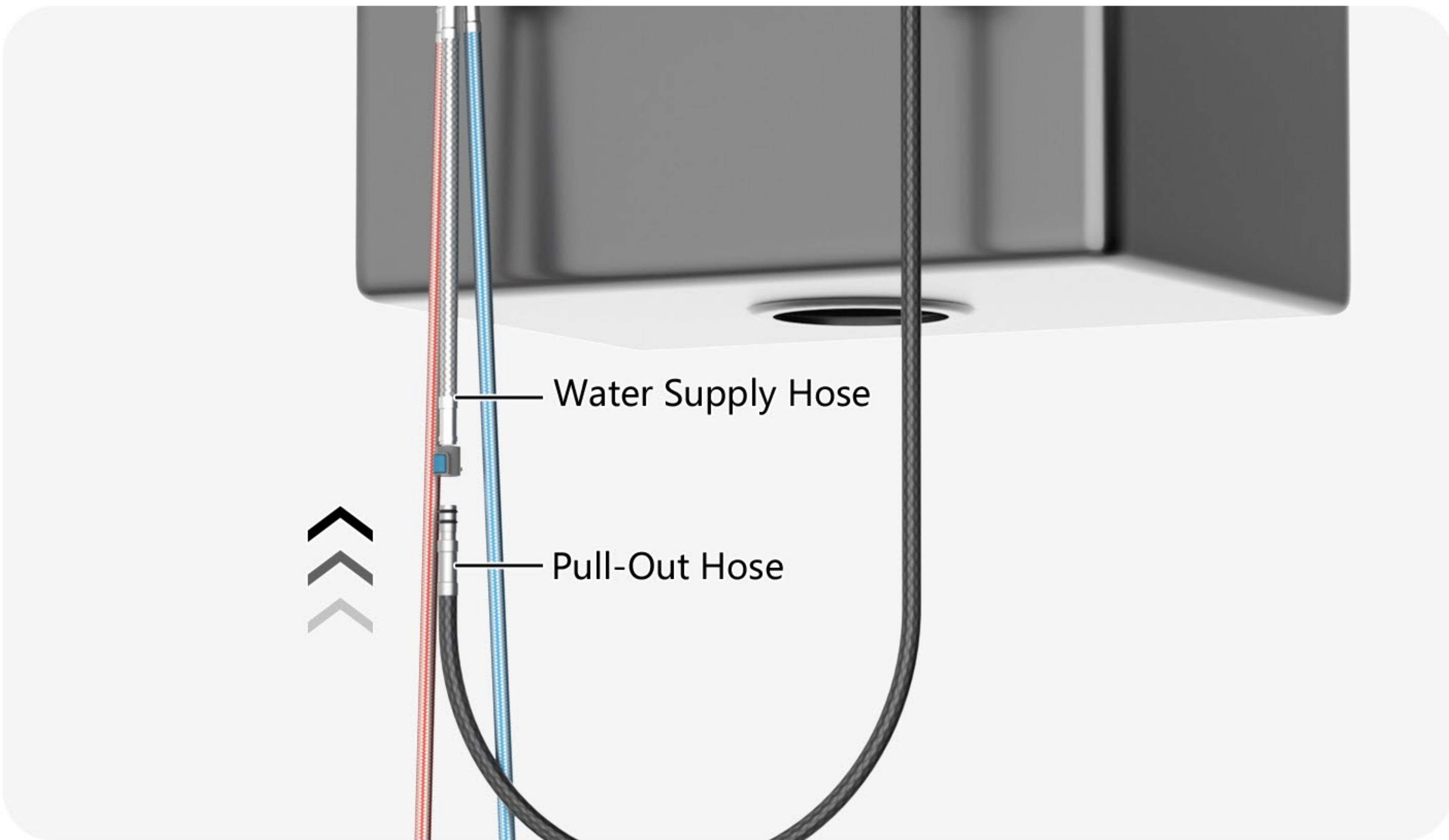
Step 8. Connect the Water Supply Hoses

- Connect the blue supply hose (cold water) and the red supply hose (hot water) to the water supply valves and tighten them with a wrench.



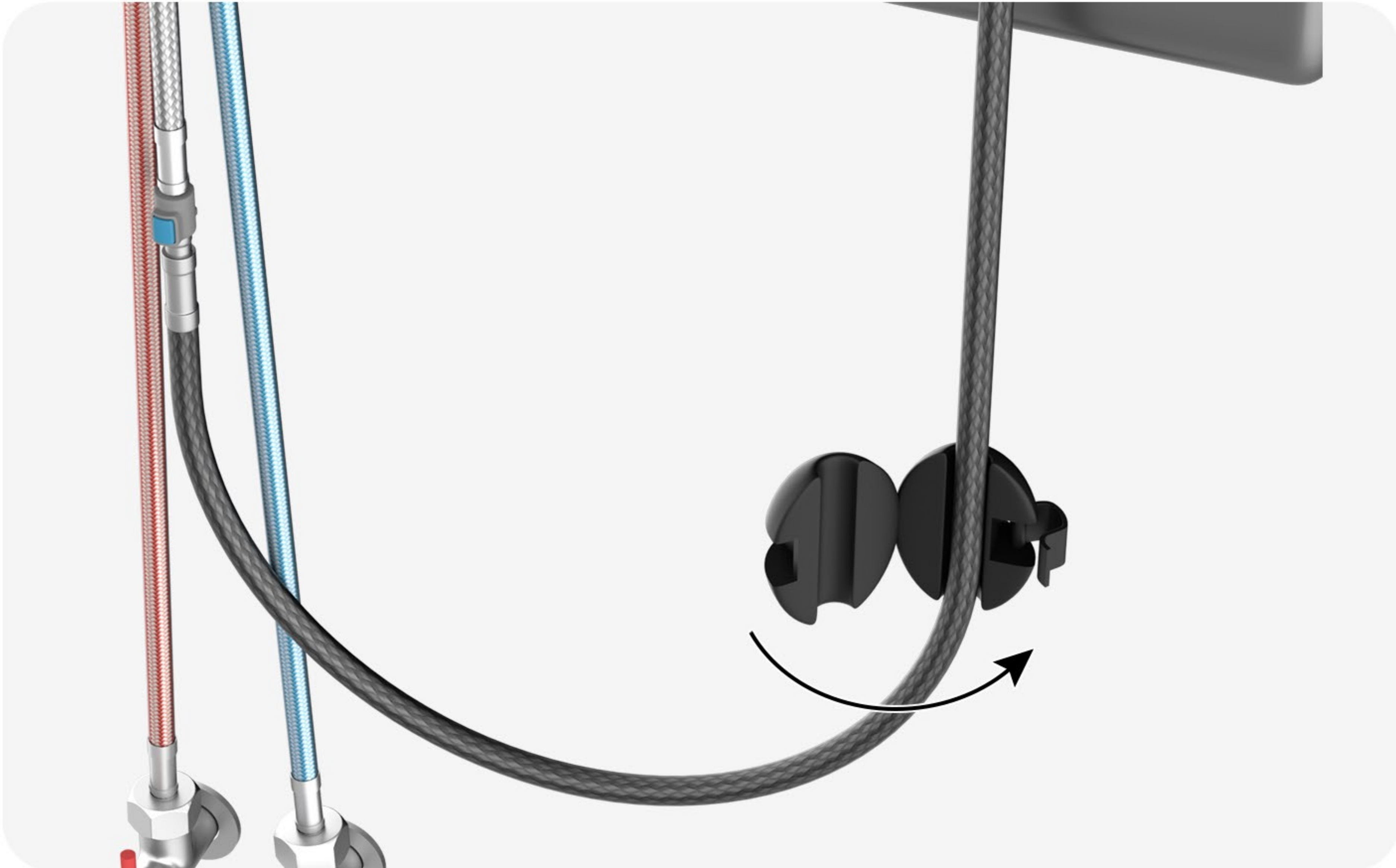
Step 9. Install the Pull-Out Hose

- Insert the pull-out hose into the water supply hose and hear a “click” to indicate that the installation is complete.



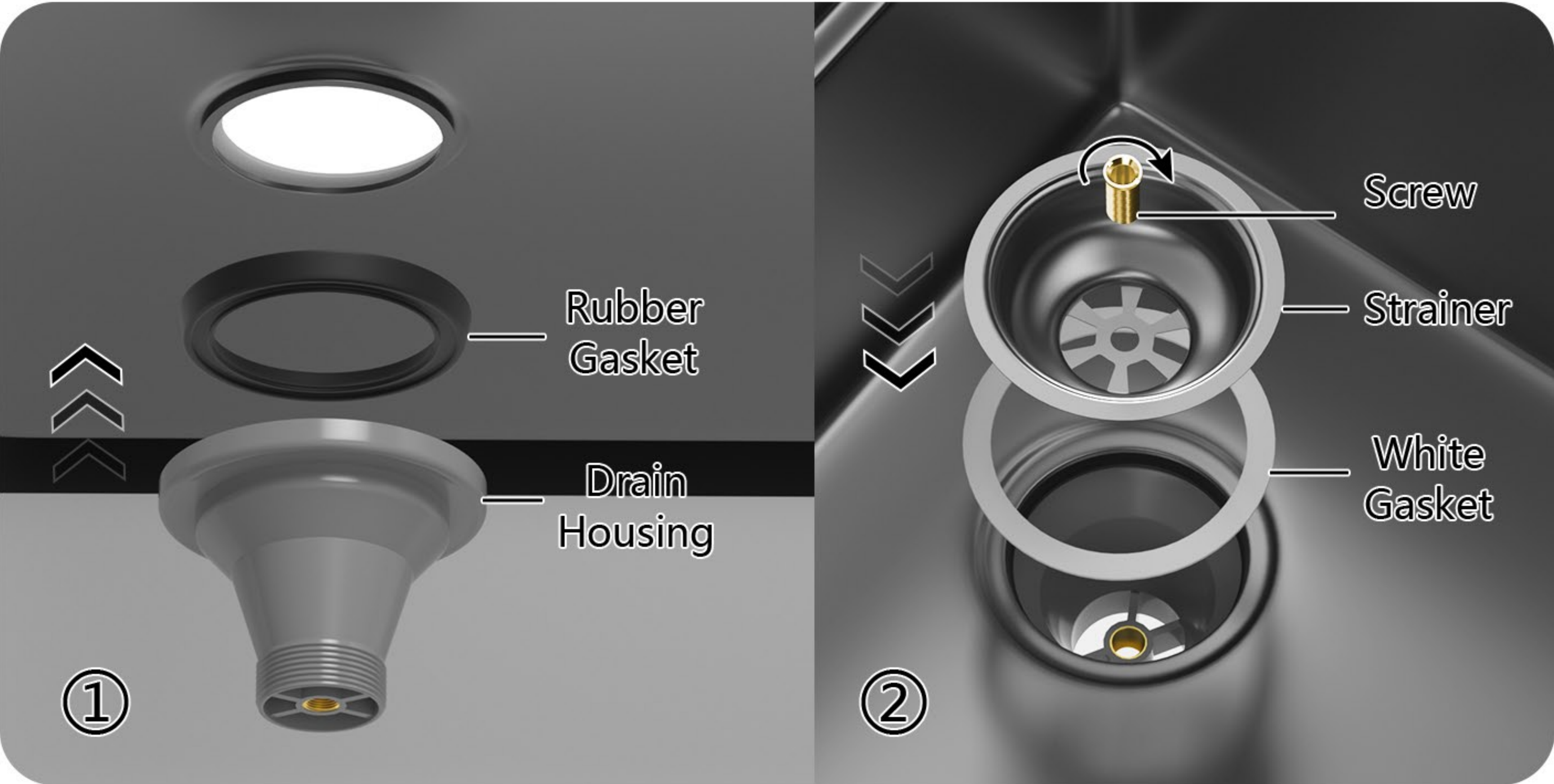
Step 10. Install the Hose Weight

- Attach the gravity ball as shown in the picture below and attach it to the pull-out faucet hose.



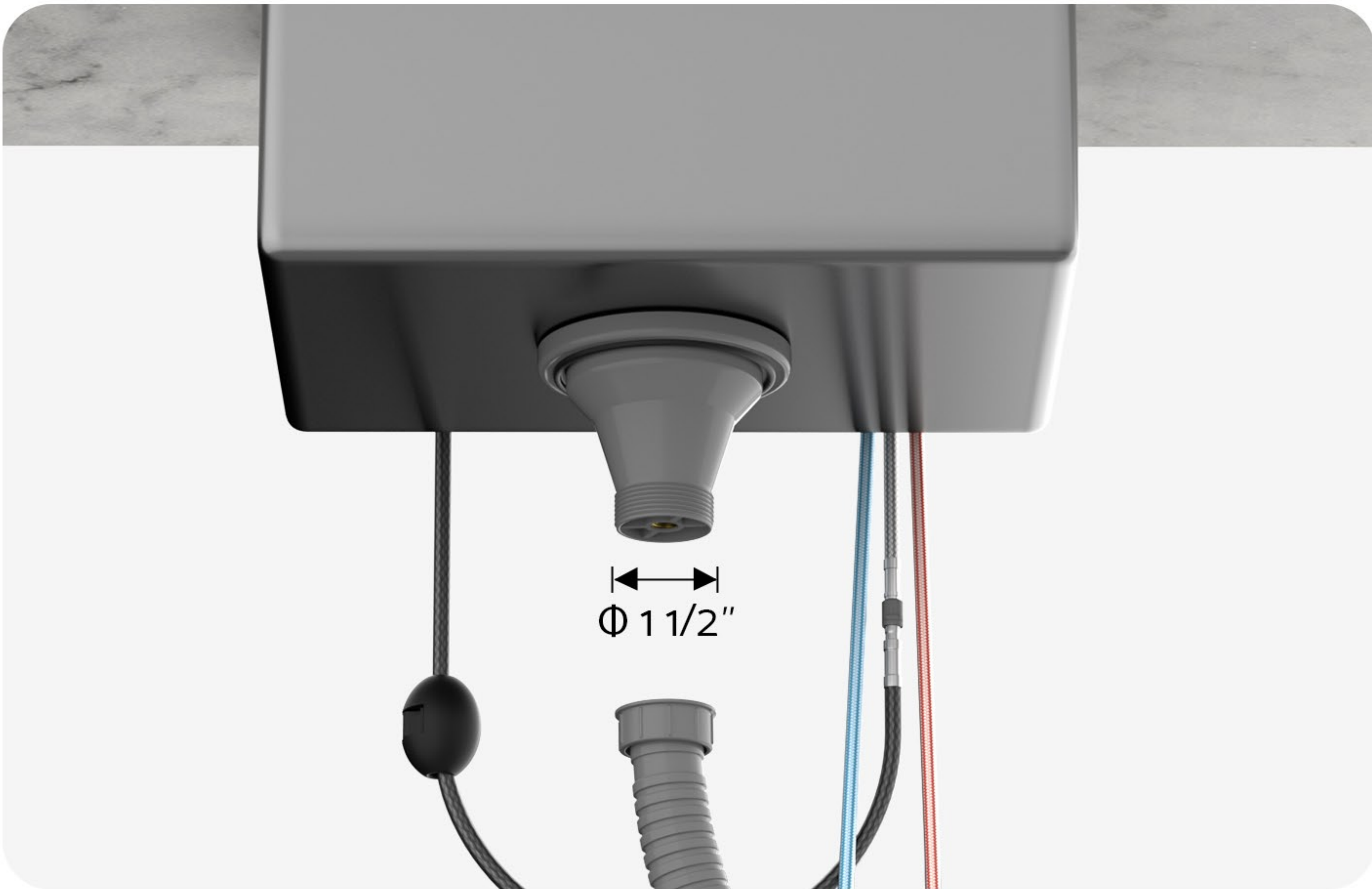
Step 11. Install the Strainer

- From underneath, slip on the rubber gasket and drain housing.
- Place the screw, strainer and white gasket onto the sink's drain hole, and tighten screw clockwise.



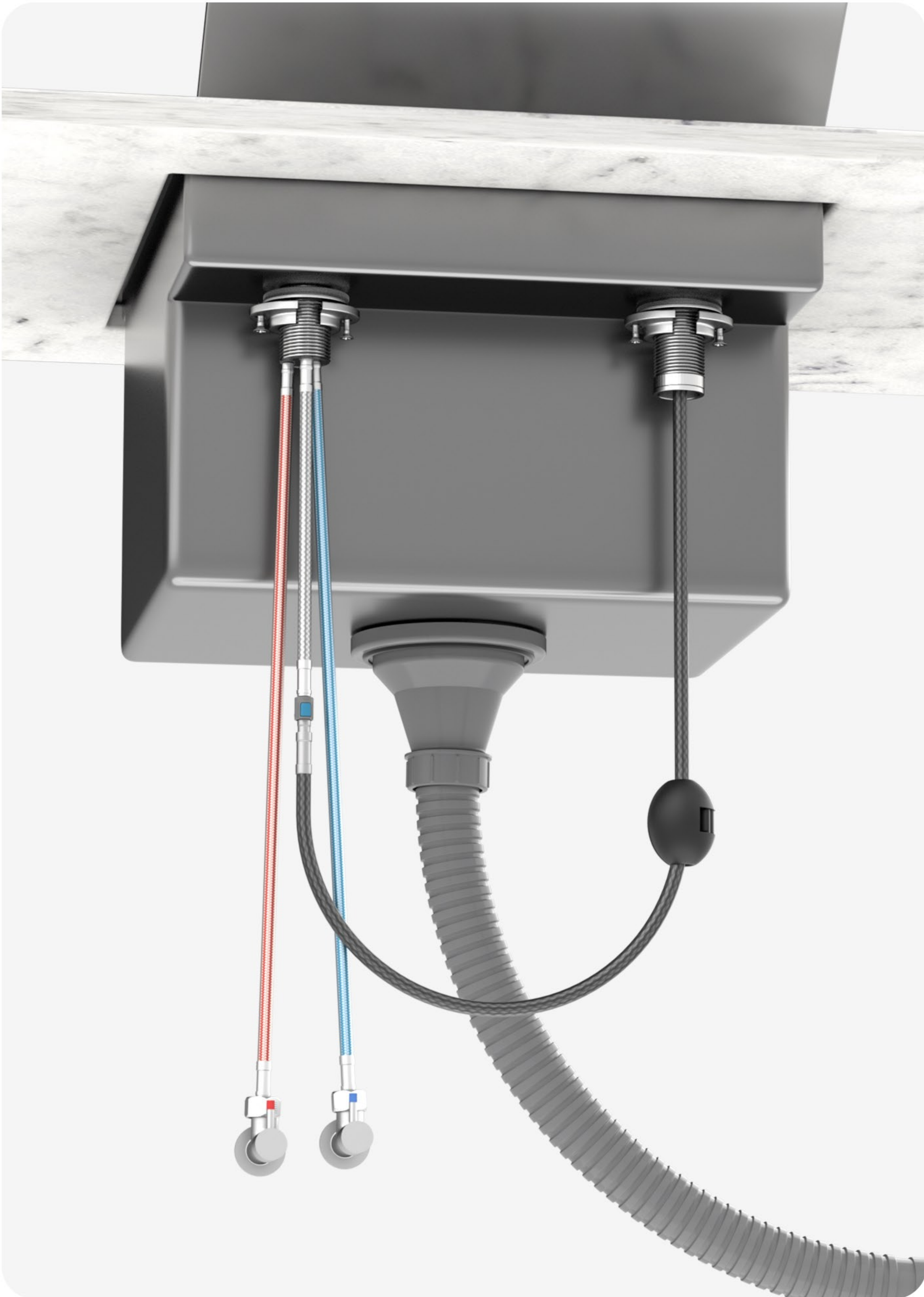
Step 12. Install the Drain Pipe

- Connect the drain pipe. (The port diameter is 1 1/2")



Step 13. Test for Leaks

- Turn on the water supply valves slowly. Run the water at full blast and observe all connections along the supply and drain lines.



Maintenance & Warranty

Kitchen Sink Maintenance

Regular maintenance is key to keeping your sink in top condition.

- **Clean Regularly**

Clean your sink regularly with warm, soapy water.
This helps to remove daily grime and prevents buildup.

- **Rinse After Cleaning**

After using any cleaning products, ensure that you rinse the sink thoroughly.
This prevents any residue from affecting the surface.

- **Wipe Dry**

Use a soft cloth to wipe the sink surface after rinsing.
This removes any liquid residue and prevents water spots.

- **Prevent Damage**

Avoid cutting food directly on the surface of the sink. Use a cutting board to protect your sink. Do not leave sharp objects on the surface of the sink for extended periods. These can cause scratches or other damage.

- **Avoid Abrasive Products**

Do not use abrasive cleaning products, sanding tools, steel wool, or bleaching products. These can severely damage the surface of your stainless steel sink.

Kitchen Sink Warranty

5-year Limited (residential) and 2-year Limited (commercial) on the sink bowl.
5-year Limited (residential) and 2-year Limited (commercial) on hardware and drain assembly.

In requesting warranty service, please be ready to provide:

1. Proof of purchase
2. The item number & Qty of the defective item(s)
3. A complete description of the problem

For more information, please check our website or contact us.

LEFTON[®]

www.leftonhome.com

