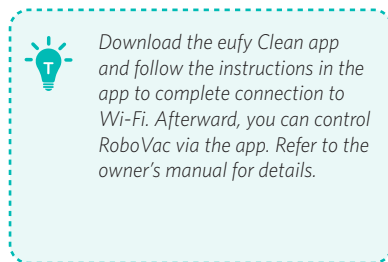
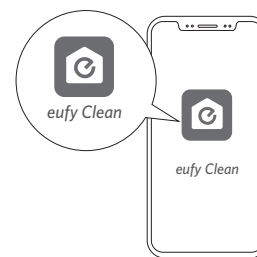
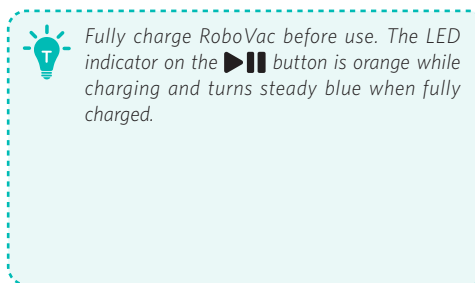
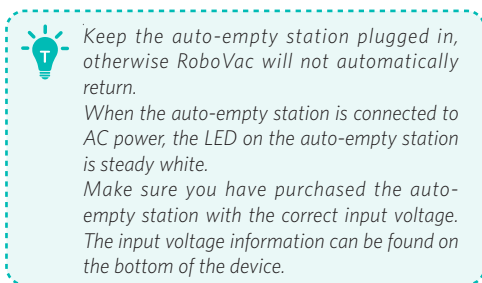
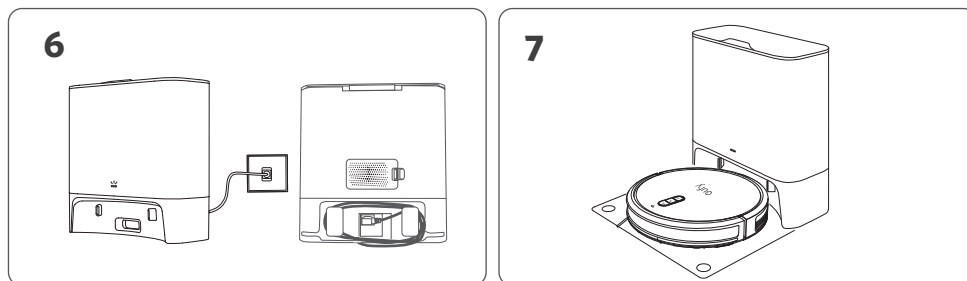
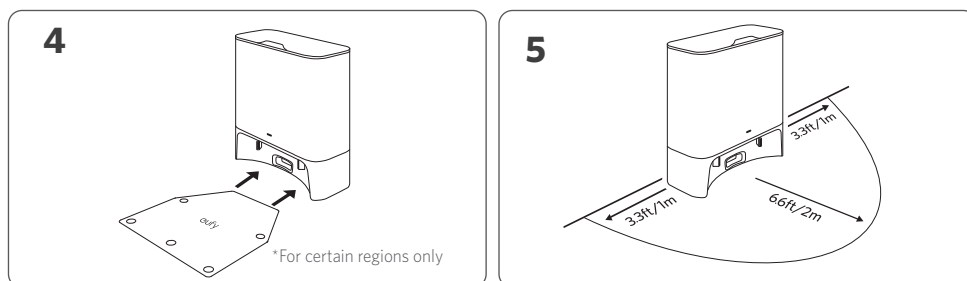
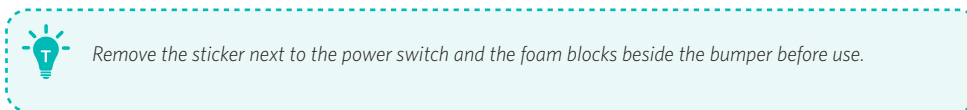
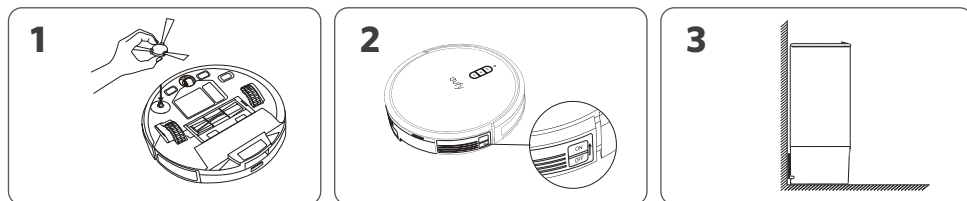
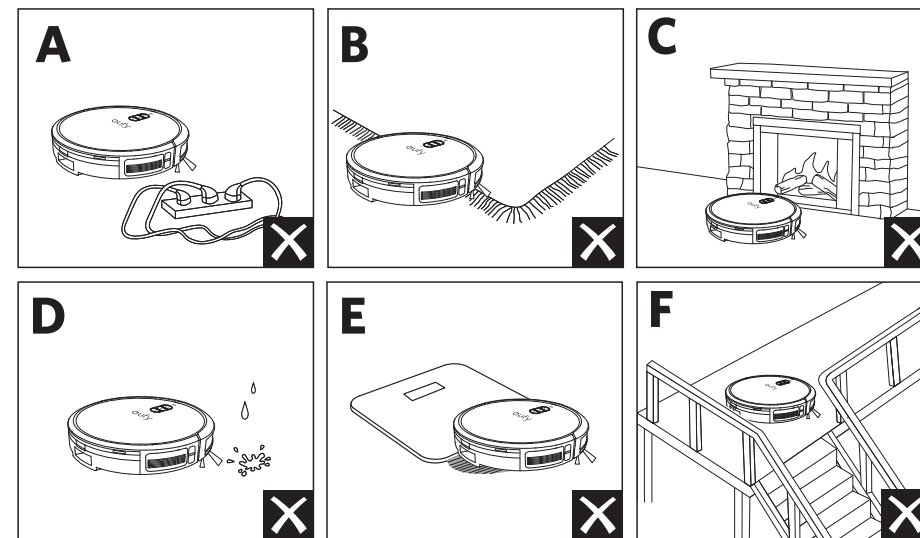


Quick Start Guide

Using Your RoboVac



Important Tips



- a Remove power cords and small objects from the floor that may entangle RoboVac.
- b Fold tasseled edges of rugs underneath to prevent tangling RoboVac. Avoid cleaning dark-colored high-pile rugs or rugs thicker than 1.02 in / 26 mm as they may cause RoboVac to malfunction.
- c It is strongly recommended to place physical barriers in front of fireplaces and certain areas (i.e. air vents) that may cause damage to RoboVac if entered.
- d Keep RoboVac away from wet areas during cleaning.
- e RoboVac may climb on top of objects less than 0.63 in / 16 mm in height. Remove these objects if possible.
- f Anti-drop sensors will prevent RoboVac from tumbling down stairs and steep drops in most cases. Sensors are less effective if dirty or used on carpeted, reflective, or dark-colored floors. Place physical barriers to block off areas where RoboVac may fall.