

<b>Specifications</b>	
<b>System General</b>	
Model Number:	BME50P
RF Frequency:	2400 ~ 2483.5MHz
Optional Camera Channels:	4
Operating Temperature Range:	0°C ~ 50°C
Origin:	Made in China
Wireless Communication:	WiFi/PTHS
Tx-Rx Transmission Range:	1000m
<b>Camera Unit</b>	
Input Voltage:	5V
Operating Power:	<800mA
IR/Night Vision:	YES
Picture Sensor:	GC7004
Operating Temperature:	0°C ~ 50°C
Power Adapter:	5V 1A
Charging Cable:	80 cm
Exposure Control:	Auto
White Balance Control:	White, Auto, 10
Vertical Turning Angle:	Manual 330
Horizontal Turning Angle:	Built in Microphone/speaker
Other Special Features:	2.76x2.76x4.35cm
Camera Dimensions (L x W x H):	

05

## Table of Contents

<b>Safety Instructions</b>	01
<b>Overview</b>	03
What's in the Box	03
Product Overview	04
Specifications	05
Menu Options	06
<b>Getting Started</b>	07
Charging and Powering the Baby Monitor	08
Placement of the Baby Monitor	08
Wall mount installation	10
<b>Using the BME50P Baby Monitor</b>	12
<b>Work with Plug/Play Display</b>	12
Registration (Pairing)	12
OSD Mode Operation	13
Menu Operation	14
<b>Work with Smartphone</b>	14
<b>Customer Service</b>	22
Warranty policy	22
Contact Us	22
<b>Trouble Shooting</b>	22

<b>Monitor Unit</b>	
Input Voltage:	5V
Operating Power:	<1000mA
LCD Display:	3.0TFT
Power Adapter:	5V 1A
Charging Cable:	80 cm
Full Charging Time:	8 Hours
Duration/Standby Mode:	30 Hours
Duration(Screen On):	20 Hours
Monitor Dimensions (L x W x H):	6.75x3.55x0.71 in

<b>Menu Options Overview (Upper Screen Bar)</b>		
Icon	Description	Option
	Signal Strength Indicator	3 levels
	Camera Selected	cam 1/cam 2/ cam 3/cam 4
	Night Vision	(on /off)
	Lullaby	(on /off)
	Alarm Setting	(on /off)
	Temp Camera	1.6K/1.7/1.8K/2.1
	Vox Sensitivity	100%-1700%-1700%-4
	Battery Power	4 levels
	WiFi	4 levels

06

## Safety Instructions

- WARNING:**
- **STRANGULATION HAZARD**-Children have STRANGLED in cords. Keep this cord out of the reach of children (more than 3ft (91cm) away).
  - **NEVER PLACE THE CAMERA OR CORD IN OR NEAR CRIER OR PLAYPEN.** Secure the cord at least 3 ft away from crib or playpen.
  - **CHOKING HAZARD**-This product contains small parts which may cause choking.
  - **SHOCK WARNING**-To prevent electric shock, NEVER use the transmitter or receiver near water, including near a bathtub, sink, laundry tub, wet basement, etc.
  - **CAUTION**-Only insert a battery pack of the same type. Risk of explosion if battery is replaced with an incorrect type.
  - Use only the DC adapters provided.
  - Adult assembly is required. Keep small parts away from children when you are assembling.
  - This product is not a toy. Do not allow children to play with it.
  - This product is NOT intended to replace proper adult supervision of children.
  - You MUST check your child's activity regularly, as this product will not alert parents to silent activities of a child.
  - Before using this product, read and follow all instructions and warnings contained in this booklet.
  - Do not allow water damage to the camera unit, monitor unit, power adapter, or charging cable which cause overheating of the charging components.

01

Icon	Description	Option
	Volume Adjustment	20 30 40 50 60 70 80 90 100
	Mute	On / Off
	Camera Options	<ul style="list-style-type: none"><li>1. Delete a camera</li><li>2. Add other's camera</li><li>3. New camera</li><li>4. Scan QR code</li><li>5. Camera speaker volume</li></ul>
	Alarm Setting	1. Off 2. On 3. 40 dB 4. 60 dB
	Temperature Unit	1. F 2. C
	Vox Sensitivity	1. 2 2. 3 3. 4 4. 5
	Network Selection	1. 2. 3. 4. 5. 6. 7. 8. 9. 10. 11. 12. 13. 14. 15. 16. 17. 18. 19. 20. 21. 22. 23. 24. 25. 26. 27. 28. 29. 30. 31. 32. 33. 34. 35. 36. 37. 38. 39. 40. 41. 42. 43. 44. 45. 46. 47. 48. 49. 50. 51. 52. 53. 54. 55. 56. 57. 58. 59. 60. 61. 62. 63. 64. 65. 66. 67. 68. 69. 70. 71. 72. 73. 74. 75. 76. 77. 78. 79. 80. 81. 82. 83. 84. 85. 86. 87. 88. 89. 90. 91. 92. 93. 94. 95. 96. 97. 98. 99. 100

### Getting Started

#### Charging and Powering in the Baby Monitor

**Turn on the Camera Unit**  
Only use the DC adapter included in this package.  
Use the provided DC adapter to connect the wall outlet with the camera unit. Once the adapter is connected, the unit will turn on automatically and the power LED will light up.

**NOTE:** Only use the enclosed camera Power Adapter.

07

- Do not use unofficial third party charging cables to charge the device. This may result in overheating of the charging port. Only use the charging cables provided in the box.
- Do not use unofficial third party power adapters, especially high wattage adapters. This may result in overheating of the cable and/or charging port. Only use the adapter provided in the box.

**FCC Statements**

- These devices, including Baby Camera and Baby Monitor, comply with Part 15 of the FCC rules. Operation is subject to the following two conditions:  
These devices must not cause harmful interference.  
These devices must accept any interference received, including interference that may cause undesired operation.

Class B Digital Device. These equipments have been tested and found to comply with the limits for a Class B digital device pursuant to Part 15 of the FCC Rules. These limits are designed to provide reasonable protection against harmful interference in a residential installation. These equipments generate, use, and can radiate radio frequency energy and, if not installed and used in accordance with the instructions, may cause harmful interference to radio communications. However, there is no guarantee that interference will not occur in a particular installation. If these equipments do cause harmful interference to radio or television reception, which can be determined by turning the equipments off and on, the user is encouraged to try to correct the interface by one or more of the following measures:

02

- **Turn on the Monitor Unit**
  - **Only use the DC adapter included in this package.**
  - **The monitor unit is supplied with a built-in rechargeable Li-ion battery.**
- We suggest to connect the monitor to the adapter plugged into the mains whenever possible, in order to keep the battery charged.

**1** Press and hold the power button on the lower right of the keypad.

**2** Once monitor unit turned on, the power LED will light up and the image will display on the LCD screen.

**Placement of the Baby Monitor**  
This camera can be placed on a tabletop or on the wall. Place the baby monitor in an airy place. Do not place on soft quilts or blankets or in the corners of cupboards, shelves, etc.

08

- Reorient or relocate the receiving antenna.
  - Increase the distance between the equipment and receiver.
  - Connect the equipment into an outlet on a circuit different from that to which the receiver is connected.
  - Consult an experienced radio / TV technician for help.
- **Warn user:** The Federal Communications Commission warns the users that changes or modifications of the unit not expressly approved by the party responsible for compliance could void the user's authority to operate the equipments.

### Overview

#### What's in the Box

1 x Baby Camera  
1 x Baby Monitor  
1 x User Manual

**NOTE:** Power adapter varies by region.

03

- Place the baby monitor away from heat sources such as radiators, chimneys, cookers and direct sunlight.
  - Place the camera unit away from TV sets, microwave oven and radios.
- The intense radio signals generated by these elements could cause noise or even deteriorate sounds and images which appear on the monitor. If this occurs, move the camera to another location.

Place the camera within 15 feet of the area being monitored for best picture result.

Baby monitors and cameras with power cords should never be hung on or near the crib as it can cause strangulation hazard. Power cords should be kept no less than 3 ft away from the crib and the baby's reach at all times.

09

### Product Overview

1. Camera  
2. Monitor  
3. Volume / Left Button  
4. Brightness / Up Button  
5. Brightness / Down Button  
6. On / Switch Camera  
7. Talk Button  
8. Power Button  
9. Volume Up  
10. Power  
11. On / Switch Camera  
12. Talk Button  
13. Power Button  
14. Volume Up  
15. Power  
16. On / Switch Camera  
17. Talk Button  
18. Power Button  
19. Volume Up  
20. Power  
21. On / Switch Camera  
22. Talk Button  
23. Power Button  
24. Volume Up  
25. Power  
26. On / Switch Camera  
27. Talk Button  
28. Power Button  
29. Volume Up  
30. Power  
31. On / Switch Camera  
32. Talk Button  
33. Power Button  
34. Volume Up  
35. Power  
36. On / Switch Camera  
37. Talk Button  
38. Power Button  
39. Volume Up  
40. Power  
41. On / Switch Camera  
42. Talk Button  
43. Power Button  
44. Volume Up  
45. Power  
46. On / Switch Camera  
47. Talk Button  
48. Power Button  
49. Volume Up  
50. Power  
51. On / Switch Camera  
52. Talk Button  
53. Power Button  
54. Volume Up  
55. Power  
56. On / Switch Camera  
57. Talk Button  
58. Power Button  
59. Volume Up  
60. Power  
61. On / Switch Camera  
62. Talk Button  
63. Power Button  
64. Volume Up  
65. Power  
66. On / Switch Camera  
67. Talk Button  
68. Power Button  
69. Volume Up  
70. Power  
71. On / Switch Camera  
72. Talk Button  
73. Power Button  
74. Volume Up  
75. Power  
76. On / Switch Camera  
77. Talk Button  
78. Power Button  
79. Volume Up  
80. Power  
81. On / Switch Camera  
82. Talk Button  
83. Power Button  
84. Volume Up  
85. Power  
86. On / Switch Camera  
87. Talk Button  
88. Power Button  
89. Volume Up  
90. Power  
91. On / Switch Camera  
92. Talk Button  
93. Power Button  
94. Volume Up  
95. Power  
96. On / Switch Camera  
97. Talk Button  
98. Power Button  
99. Volume Up  
100. Power

### Wall mount installation

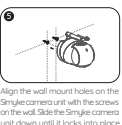
**1** Position the crib against the preferred wall in the nursery.

**2** Using the Measuring Tape, find the center of the crib and mark the wall with a pencil.

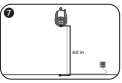
**3** Lift the tape up 60 inches and mark at the "Mark Here" indicator.

**4** Push the Large Drywall Anchors into each hole and screw them until they are flush.

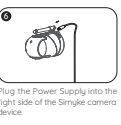
10



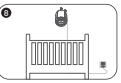
Align the wall mount holes on the Simlyke camera unit with the screws on the wall. Slide the Simlyke camera unit down until it locks into place.



Optimal mounting height 60 in



Plug the Power Supply into the right side of the Simlyke camera device.



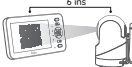
Plug the Power Cord into the nearest outlet.

## Using the BME50P Baby Monitor

### Work with Plug&Play Display Registration (Pairing)

The Camera Unit is pre-registered to your monitor unit. You do not need to register it again unless the Camera Unit loses its pairing with the monitor unit. To re-register your Camera Unit, or register a new Camera Unit, follow the procedure below:

- Press the **MENU** button of the monitor unit and the menu bar will pop up.
- Press the **LEFT** button or **RIGHT** button until the **cam** icon is highlighted.
- Press the **UP** button or **DOWN** button until the **cam** icon is highlighted and press the **OK** button.
- Press the **UP** button or **DOWN** button to select the desired cam and press the **OK** button to create the registration (pairing) QR code.
- Follow the instructions on the screen of the monitor and finish the registration (pairing).



**NOTE:** If a particular Camera Unit was previously registered with another monitor unit, registering with the current monitor unit will overwrite the old registration on the camera Unit.

### OSD (On Screen Display) Mode Operation

#### Screen Off/Power Off

- Press the **power** button to get into the SLEEP MODE.
- Long press the **power** button to turn on /off the screen.

#### Volume Adjustment

- Press the Volume/brightness function key **Vol** and the keypad indicator will be displayed on the screen.



- Press the **RIGHT** button to increase the volume.
- Press the **LEFT** button to decrease the volume.

#### Brightness Adjustment

- Press the Volume/brightness function key **Vol** and the keypad indicator will be displayed on the screen.



- Press the **UP** button to increase the brightness.
- Press the **DOWN** button to decrease the brightness.

### Talk to Baby

To talk, press and hold the **TALK** button. Release the button when you have finished talking to and want to listen from the baby's room again. Bear in mind that you will not be able to listen to your baby while talking to the monitor. You will have to stop pressing this button before listening to your baby. When you are using this function, the **Talk** icon will be displayed on the the screen.

#### Infrared Night Vision (Automatic)

The infrared night vision function allows the camera to pick up images of your baby or the monitored area in dark or low light conditions. When using the night vision mode, only black and white images will be displayed on the monitor. (When the camera is in night vision mode, the **Night vision** icon will be displayed on the top of the screen).

#### Menu Operation

##### Lullaby Setting

- Press the **MENU** button and the menu will show.
- Press the **LEFT** button or **RIGHT** button until the **Lullaby** icon is highlighted.
- Press the **UP** button or **DOWN** button to select one of the 5 available lullabies, single or sequential playing, or stop playing.
- Press the **MENU** button to Exit.

**NOTE:**

- Once the lullaby starts playing on, the lullaby icon will display on the top of the screen.
- Lullaby sequential playing function **→** will play all the lullabies each time.

### Alarm Setting

- Press the **MENU** button and the menu bar will pop up.
- Press the **LEFT** button or **RIGHT** button until the **Alarm** icon is highlighted.
- Press the **UP** button or **DOWN** button to select the desired time from 2h, 4h, 6h and OFF. (The default setting is OFF)
- Press the **OK** button to confirm.

#### VOX Setting

This mode allows you to control the sound activation of your baby monitor. If there is no sound around the camera within or 5m, it will stop the transmission. The monitor screen will turn off when the camera is not transmitting. When the camera detects the sound exceeding the sensitivity level, it will start transmitting the signal to the monitor and alert the user. To change the VOX level, please follow the instructions below.

- Press the **MENU** button and the menu will show.
- Press the **LEFT** button or **RIGHT** button until the **VOX** icon is highlighted, then press the **UP** button or **DOWN** button to select desired level. Press the **OK** button to confirm.
- Press the **MENU** button to exit.

**NOTE:**

- 1** is low sensitivity level.
- 2** is medium sensitivity level.
- 3** is high sensitivity level.
- VOX Mode default OFF **0**.

### Camera Control

#### Add (Pair) a Camera

Please refer to the instructions for camera pairing on Page 13.

#### Delete a Camera

- Press the **MENU** button and the menu bar will show.
- Press the **LEFT** button or **RIGHT** button until the **cam** icon is highlighted and the camera add **+** / camera delete **-** / camera view **cam** / camera scan **cam** / camera speaker out **cam** menu will show.
- Press the **UP** button or **DOWN** button to select the **cam** icon is highlighted and the camera add **+** / camera delete **-** / camera view **cam** / camera scan **cam** / camera speaker out **cam** menu will show.
- Press the **UP** button or **DOWN** button to select the **cam** view icon, and press the **OK** button to confirm.

**NOTE:** A cam channel needs to be deleted before pairing to a new Camera unit.

#### View a Camera

- Press the **MENU** button and the menu bar will show.
- Press the **LEFT** button or **RIGHT** button until the **cam** icon is highlighted and the camera add **+** / camera delete **-** / camera view **cam** / camera scan **cam** / camera speaker out **cam** menu will show.
- Press the **UP** button or **DOWN** button to select the **cam** view icon, and press the **OK** button to confirm.

## Customer Service

### Warranty policy

We guarantee 12 months warranty and professional after-sale service within 24 hours.

### Contact Us

If you have any questions, please feel free to contact us via our official email address: info@simlyke.net



### Trouble Shooting

No reception on The Monitor	<ul style="list-style-type: none"><li>The power adapters may not be properly connected.</li><li>Confirm that the camera and monitor are ON.</li><li>Camera may be far away from the monitor.</li><li>Camera and monitor may not be properly paired, follow Registration(Pairing) instructions.</li></ul>
Interference or Poor Reception	<ul style="list-style-type: none"><li>Place the monitor close to the camera.</li><li>The camera or monitor may be placed too close to many metal objects.</li><li>Other electronic devices may be interfering with the signal.</li><li>The battery power may be too low.</li></ul>
Audio Feedback (High Pitched Noise)	<ul style="list-style-type: none"><li>The camera and monitor may be placed too closed.</li><li>The volume on the monitor may be set too high.</li></ul>
Frozen Picture on Screen	<ul style="list-style-type: none"><li>Recover the baby unit (plug out the adapter, then plug it into the socket again).</li><li>Press the RESET key on the back of parent unit.</li></ul>

- Press the **MENU** button and the menu bar will show.
- Press the **LEFT** button or **RIGHT** button until the **cam** icon is highlighted and the camera add **+** / camera delete **-** / camera view **cam** / camera scan **cam** / camera speaker out **cam** menu will show.
- Press the **UP** button or **DOWN** button to select the **cam** scan icon, and press the **OK** button to confirm.
- The screen will display the video from different paired cameras in a loop of **1/2/3/4** changing every 30 seconds.

**NOTE:** When in the scan mode, the monitor unit will stop scanning and alert you if one of the camera unit is out of range or is not powered on.

### Set Camera Speaker Out Volume

This setting applies to following features on camera side:  
Two way talk, Lullaby, sound indications for camera status.

- Press the **MENU** button and the menu bar will show.
- Press the **LEFT** button or **RIGHT** button until the **cam** icon is highlighted and the camera add **+** / camera delete **-** / camera view **cam** / camera scan **cam** / camera speaker out **cam** menu will show.
- Press the **UP** button or **DOWN** button to select the **cam** volume setting icon, and press the **OK** button to confirm.
- Volume high **4** / Medium **3** / Low **2** will show, press the **UP** button or **DOWN** button to select the desired level, and press the **OK** button to confirm.

### Warning Volume Setting

This setting turns on/off the audio 'beep' sound from the monitor unit to alert you when the unit is low on battery or out of range.

- Press the **MENU** button and the menu bar will show.
- Press the **LEFT** button or **RIGHT** button until the **Warning** volume icon is highlighted.
- Press the **UP** button or **DOWN** button to select ON / OFF.

#### Temperature Unit Setting

- Press the **MENU** button and the menu bar will show.
- Press the **LEFT** button or **RIGHT** button until the **Temperature** icon is highlighted.
- Press the **UP** button or **DOWN** button to select between **C** or **F**, and press the **OK** button to confirm.

#### LCD Screen Brightness Setting

- Press the **MENU** button and the menu bar will show.
- Press the **LEFT** button or **RIGHT** button until the **Brightness** icon is highlighted.
- Press the **UP** button or **DOWN** button to select the desired brightness level.

#### LCD Screen Speaker Volume Setting

- Press the **MENU** button and the menu bar will show.
- Press the **LEFT** button or **RIGHT** button until the **Warning** speaker volume icon is highlighted.
- Press the **UP** button or **DOWN** button to select the desired volume level.

## Work with Smartphone

### 1.Download & Register

Download the App and follow the onscreen instructions to complete your initial registration



### 2.Pair Device

Tap 'Pair Device' to pair your phone with Simlyke baby monitor



### 3. Ready to begin

Now start your journey with Simlyke camera!

