

SHARPER IMAGE®

LIGHTWEIGHT HANDHELD VACUUM

814100373

Please read all instructions and warnings prior to use.
Keep this manual as it contains important information for future reference.

⚠ DANGER: ELECTRIC APPLIANCE

To reduce the risk of injury, fire, electric shock, and property damage resulting from improper use of this appliance, carefully observe the following instructions:

IMPORTANT SAFETY SAFEGUARDS

PLEASE READ BEFORE USE

- To reduce risk of injury, use only the provided instruction manual.
- To reduce risk of skin irritation, do not use on hair or sensitive surfaces.
- For use only with 200-240V/50-60Hz/100-120W US Charger.
- Keep out of the reach of children. No tools, accessories, or the cord or cable when operating, handling, or charging.
- Unplug from power by pulling the plug out, then cord.
- Do not carry the charging/storage base by pulling the power adapter cable.
- Do not use cord as a handle.
- Do not step on cord or cord, and avoid contact with sharp edges, furniture, or corners.
- Do not use appliance or drag objects over cord.
- Keep cord away from heated surfaces.
- Keep suction nozzle away from hair, face, fingers, bare feet, and loose clothing.
- Stop use immediately if any opening becomes blocked or if airflow becomes reduced.
- Do not put any liquid into or near openings. Do not inhale or breathe fine dust, dirt, and objects that may become clogged.
- Do not use appliance for vacuum and sealed. During the use, when charging and before sealing.
- Do not use on wet or flammable.
- Do not use on wet or flammable surfaces or other liquids.
- Use caution when vacuuming while standing on stairs, ladders, or step stools. Always ensure you have stable footing and proper balance when using the vacuum. Do not overextend your reach.
- Do not use to vacuum hair or sharp objects that could damage the vacuum, including but not limited to glass, nails, screws, or coins.
- Do not use to vacuum drywall dust or ashes.
- Do not use to vacuum flammable, combustible, toxic, corrosive, or other dangerous materials, chemicals, or solutions, including but not limited to lighter fluid, gasoline, mineral spirits, kerosene, bleach, drain cleaner, etc., or use in areas where they may be present.
- Do not vacuum smoking or burning objects such as hot coals, embers, cigarette, or matches.
- Do not insert any objects into vacuum other than the included attachments. Do not use only in vacuum loose debris.
- Do not expose vacuum to high temperatures or heating surfaces.
- Do not use, charge, or store the vacuum below 32°F (0°C) or above 104°F (40°C). The vacuum is at room temperature during use.
- Do not use vacuum with attachments other than those provided. Use only as described in the manual.
- Use only with dusting and filter provided in place. Replace in original position with a new surface.
- Make sure filter is completely dry after maintenance and cleaning before installation and use.
- The vacuum includes no serviceable parts. Do not attempt to repair or repair.
- For indoor use only.
- Thoroughly inspect all parts before every use. If any parts appear worn, frayed, split, torn, cracked, or broken in any manner, discontinue use and discard properly.
- Do not use with damaged adapter or power plug. If appliance has been dropped, damaged, left outdoors, dropped into water, or is not working as it should, contact a service center.
- Do not handle power adapter or appliance with wet hands.
- Always turn off the appliance before connecting or disconnecting the motor nozzle.
- For household use only.

BATTERY WARNINGS

- Allow battery to cool to room temperature before charging.
- This product contains specifically designed batteries that are non-replaceable. Use of any other battery pack is may create a risk of injury and fire.
- There is a risk of fire and personal injury if battery is punctured, damaged, or misused.
- Do not dismantle, crush, incinerate or short circuit battery.
- Never expose battery to extreme temperatures or moisture.
- Keep away from flammable materials and direct sunlight.
- Only charge using the provided charger, cable, and/or adapters. Use of a different battery pack/charger may create a risk of fire.
- Rechargeable battery is only to be charged by an adult or under adult supervision.
- Charge on a non-flammable surface and keep away from flammable products.
- Discontinue charging if battery becomes hot, swells, smokes, or gives off a strong odor.
- Battery chargers used with this product are to be regularly examined for damage to the cord, plug, and cable, and other parts. In the event of such damage, chargers must not be used until the damage has been repaired or replaced.
- Recycle or dispose of battery according to federal, state, and local laws.
- To prevent fire and/or accidents, ensure the switch is in the off position before connecting to battery pack, plugging up, or carrying the appliance.
- When appliance is not in use, keep it away from paper clips, coins, keys, nails, screws, or other small metal objects that can make an electrical connection. This can short circuit the battery and may cause burns and a fire.
- Under abusive conditions, liquid may be ejected from the battery. Avoid contact. If contact with skin or eyes accidentally occurs, flush with water and seek medical help. Liquid ejected from the battery may cause irritation or burns.
- Do not expose battery pack or appliance to fire or excessive temperatures. Exposure to fire or temperature above 110°C (230°F) may cause explosion.
- Follow all charging instructions and do not charge the battery pack or appliance outside of the temperature range specified in the instructions. Charging improperly or at temperatures outside of the specified range may damage the battery and increase the risk of fire.
- Have servicing performed by a qualified repair person using only certified replacement parts. This will ensure the safety of the product is maintained.
- Do not modify or attempt to repair the appliance or the battery pack except as indicated in these instructions for use and care.

IMPORTANT MAINTAINING BATTERY HEALTH

- Your vacuum is designed with a lithium-ion battery pack for endless convenience, increased vacuuming time, on-the-go charge, frequent use, and recharging.
- To maintain charge capacity and prevent battery damage, all lithium-ion batteries must be regularly used and recharged.
- All batteries naturally lose charge when not in use. If you will not be using the vacuum for an extended period, check the unit every 30 days to ensure the battery is at approximately 50% state of charge. For optimal battery life and performance, recharging is needed to maintain a 50% state of charge.
- IMPORTANT: Do not store the battery for an extended period with above 80% or below 20% state of charge. An incorrect state of charge during storage could rapidly damage the battery and may result in reduced charge capacity, inability to maintain charge, failure to recharge, or complete loss of ability of the vacuum.
- For the health of the battery, always store the vacuum in a cool, dry place. The storage time should be in a consistent temperature between 40°F and 70°F (4°C and 21°C) as well as a relative humidity of 45% or lower.

FCC STATEMENT

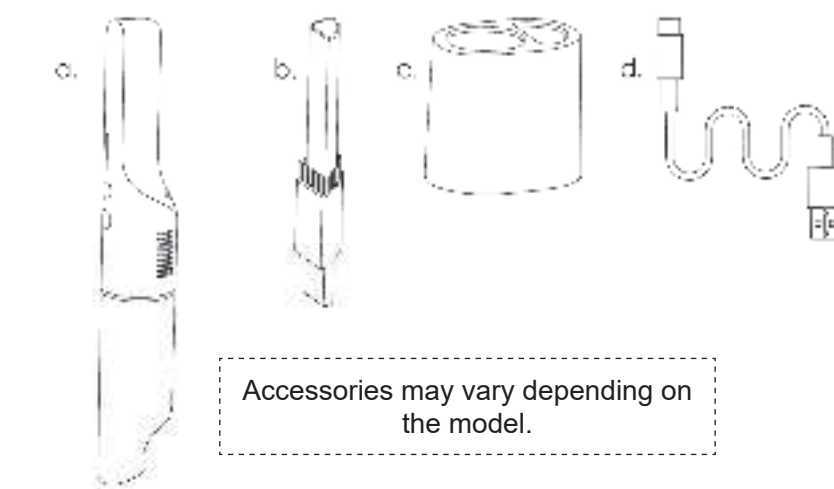
- This device complies with part 15 of the FCC Rules. Operation is subject to the following two conditions:
- (1) This device may not cause harmful interference, and
 - (2) If it does, it must accept any interference received, including interference that may cause undesired operation.
- Note: This equipment has been tested and found to comply with the limits for a Class B digital device, pursuant to part 15 of the FCC Rules. These limits are designed to provide reasonable protection against harmful interference in a residential installation. This equipment generates, uses, and can radiate radio frequency energy and, if not, it is not intended to be used in conjunction with the instructions, may cause harmful interference to radio communications. However, there is no guarantee that interference will not occur in a particular installation. If this equipment does cause harmful interference to radio or television reception, which can be determined by turning the equipment off and on, the user is encouraged to try to correct the interference by one or more of the following measures:
- Reorient or relocate the receiving antenna for the device experiencing interference.
 - Increase the separation between the equipment and receiver.
 - Connect the equipment into an outlet on a circuit different from that to which the receiver is connected.
 - Consult the dealer or an experienced radio/television technician for help.

Warning: Changes or modifications to this unit not expressly approved by the party responsible for compliance could void the user's authority to operate the equipment.

SAVE THESE INSTRUCTIONS

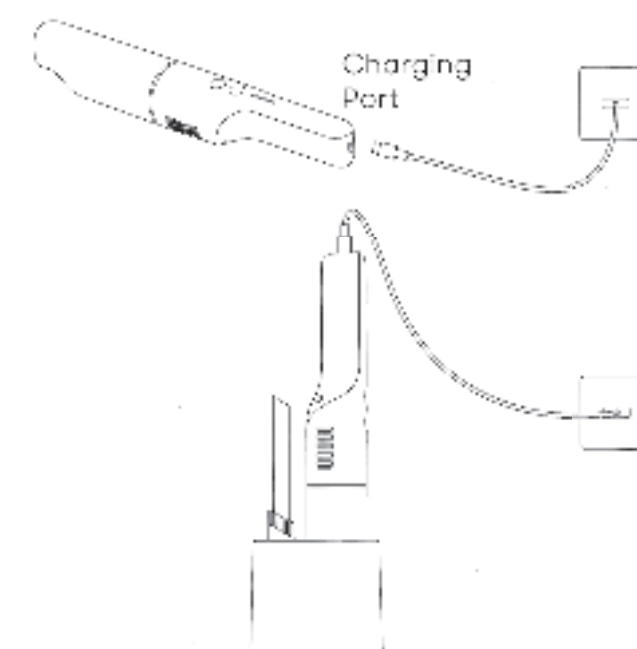
WHAT YOU GET

- Hand Vacuum
- Combination crevice and dusting tool
- Stand storage base
- USB-C charging cord



POWER

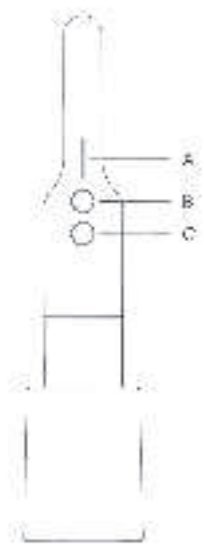
- To charge the vacuum, Place handheld vacuum on a safe flat surface or in the storage base stand. Then plug the USB-C charging cord into the input port on the end of the vacuum handle and the other end into any USB adapter connected to a power source.



- Wait for the vacuum to fully charge before first use. The power status light bar shows the current charge while charging and during use. During charging, the charging status light bar will blink white and will fill to solid white as the vacuum charges.

CONTROLS

- A. Power Status Light Bar
- B. Power Button
- C. Power Mode Button

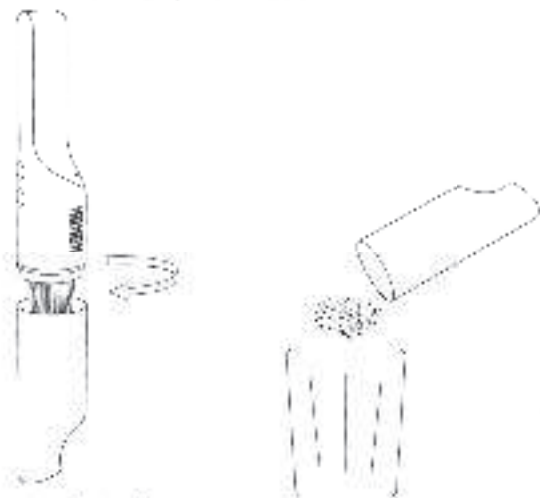


NOTE: The images shown in this manual are for illustrative purposes only and may be subject to change, the actual descriptions of control panel and their locations may vary depending on the model.

- 1. Slide the vacuum out of the storage base and then press the power button to power on the vacuum. Press the power button again to power off the vacuum.
- 2. Press the power mode button to activate high-power suction mode. Both mode lights will activate. Press the power mode button again for standard suction mode.
- 3. To use the 2-in-1 crevice tool, power off the vacuum and slide the tool into the nozzle opening. To remove a tool, slide it out of the nozzle. The 2-in-1 crevice tool can be used with or without the brush—simply slide the brush on or off as desired.

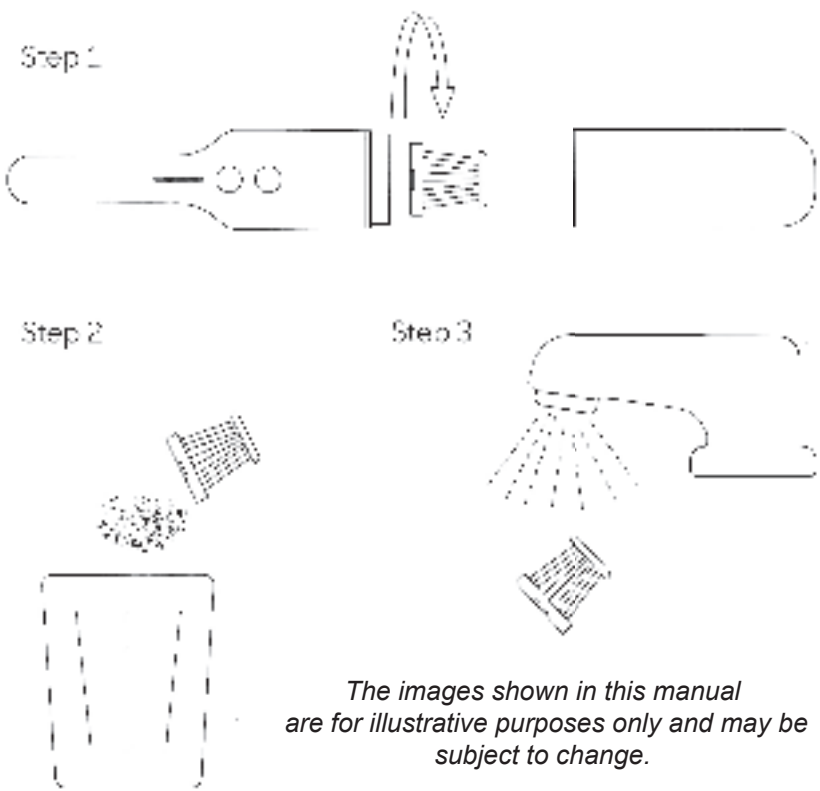
CARE INSTRUCTIONS

- 1. For optimum performance, regularly clean the dustbin and filter.
- 2. To empty the dustbin, hold it over a garbage can or waste bin and twist the dustbin counterclockwise to unlock and remove the dustbin and empty the dust.



- 3. Lightly tap the filter housing to remove any remaining dust or debris. Then wipe down the dustbin interior and filter housing with a dry cloth.

- 4. To clean the filter, twist the filter counterclockwise and remove it. Hold the filter over a garbage can or waste bin and tap the filter lightly to remove any dust or debris. Then rinse the filter thoroughly in water and allow to air-dry completely before reinstalling and using in the vacuum.



The images shown in this manual are for illustrative purposes only and may be subject to change.

IMPORTANT: Do not use soap or other cleaners on the filter. Never use the filter when damp or moist. Do not use the vacuum without the filter in place.

SPECIFICATIONS

Charging voltage	5V
Battery Capacity	2200mAh
Bin Capacity	4.4 oz. (130mL)
Charging Time	3-4 Hours

Information shown here may vary

PRINTED IN MEXICO
Elbrd: J.M. / SC: 10-04-2025
OBPN: N/A / SHDML: 1018292_B

8 1 4 1 0 0 3 7 3



TROUBLESHOOTING

Notification	Cause	How to Fix
If the motor does not work	Maybe the motor over temperature	If the motor is abnormal, the display light will show a double red light flashing at a frequency of 5Hz for 10 cycles (4S) before turning off the light. How to remove abnormal: If the motor shuts down due to high temperature protection, cool the machine before restarting.
If the unit is not charging	May be due to excessive temperature during charging (NTC open circuit, temperature exceeding 50°C)	The display continuously flashes and light at a frequency of 5Hz. How to troubleshoot: Allow the battery to cool to below 40°C (104°F). This will return the unit to operational temperature.
If the discharging function is not working	May be due to overheating during operation (not within 20-70°C), red light, overheating alarm activates	A flashing red light at a frequency of 5Hz, with 10 cycles (4S). How to troubleshoot: Turn the unit off and allow the temperature to return to below 40°C (104°F), and the function should become operational.
If the unit stops working during normal operation	During operation the battery voltage is monitored. Any battery voltage detected below 2.75V/G2 will turn the motor off	A flashing red light at a frequency of 5Hz, with 10 cycles (4S). How to troubleshoot: Charge the unit.
If the dust flap comes off	During long-term use, the dust flap may become dislodged	How to reinstall: Align the dust flap with the captive groove, then press it into place.
Dust bin will not assemble properly	Could not lock the dust bin into place properly	How to troubleshoot: Align the silk dot on the side of the dust bin with the dot on the air inlet cover and rotate clockwise to lock it in place.
Cannot properly reattach filter assembly	Filter assembly will not properly align with inlet cover	How to troubleshoot: Place filter assembly into groove on inlet cover and rotate it clockwise. When the vertical screen icon in the middle of the filter is aligned with the screen printing on the lower air inlet cover, proper installation is completed.