

SHARPER IMAGE®

LIGHTWEIGHT HANDHELD
VACUUM

814100373

Please read all instructions and warnings prior to use.
Keep this manual as it contains important
information for future reference.

⚠

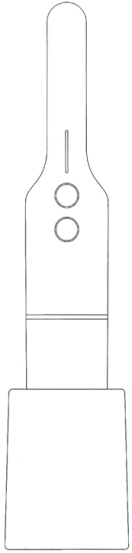
DANGER: ELECTRIC APPLIANCE

To reduce the risk of injury, fire, electric shock, and property damage resulting from improper use of this appliance, carefully observe the following instructions.

IMPORTANT SAFETY
SAFEGUARDS

PLEASE READ BEFORE USE

- To reduce risk of injury, user must read this instruction manual.
- To reduce the risk of electric shock – Do not use outdoor or wet surfaces.
- For use only with ZD012M135100US Charger.
- Keep out of the reach of children. Not to be used as a toy. Use caution when operating near children.
- Unplug from power by pulling the plug not the cord.
- Do not carry the charging/storage base by pulling the power adapter cord
- Do not use cord as a handle.
- Do not close a door on cord, pull cord around sharp edges, furniture, or corners.
- Do not run appliances or drag objects over cord.
- Keep cord away from heated surfaces.
- Keep suction nozzle away from hair, face, fingers, bare feet, and loose clothing.
- Stop use immediately if any opening becomes blocked or if airflow becomes reduced.
- Do not put anyobject into air intake openings. Keep intake openings free of dust, lint, hair, and objects that may reduce airflow.
- Do not leave powered on vacuum unattended . Unplug from outlet when not charging and before servicing.
- Do not use to vacuum liquids.
- Do not immerse or expose vacuum to water or other liquids.
- Use caution when vacuuming while standing on stairs, ladders, or step stools. Always ensure you have stable footing and proper balance when using the vacuum. Do not overextend your reach.
- Do not use to vacuum hard or sharp objects that could damage the vacuum, including but not limited to glass, nails, screws, or coins.
- Do not use to vacuum drywall dust or ashes.
- Do not use to vacuum flammable, combustible, toxic, corrosive, or other dangerous materials, chemicals, or solutions, including but not limited to lighter fluid, gasoline, match heads, chlorine bleach, drain cleaner, etc. – or use in areas where they may be present.
- Do not vacuum smoking or burning objects such as hot coals, embers, cigarettes, or matches.
- Do not insert any objects into vacuum other than the included attachments as directed. Use only to vacuum loose debris.
- Do not expose vacuum to high temperatures or heated surfaces.
- Do not use, charge, or store the vacuum below 37.4°F (3°C) or above 104°F (40°C). Ensure vacuum is at room temperature during use.
- Do not use vacuum with attachments other than those included. Use only as described in this manual.
- Use only with dustbin and filter properly in place. Replace in original positions after routine maintenance.
- Make sure filter is completely dry after maintenance and cleaning before reinstallation and use.
- The vacuum includes no serviceable parts. Do not modify or attempt to repair.
- For indoor use only.
- Thoroughly inspect all parts before every use. If any parts appear worn, frayed, splintered, cracked, or broken in any manner, discontinue use and discard appropriately.
- Do not use with damaged adapter cord or plug. If appliance has been dropped, damaged, left outdoors, dropped into water, or is not working as it should, contact a service center.
- Do not handle power adapter or appliance with wet hands.
- Always turn off this appliance before connecting or disconnecting motorized nozzle.
- For household use only.



BATTERY WARNINGS

- Allow battery to cool to room temperature before charging.
- This product contains specifically designed batteries that are non-replaceable. Use of any other battery packs may create a risk of injury and fire.
- There is a risk of fire and personal injury if battery is punctured, damaged, or misused.
- Do not dismantle, crush, incinerate or short-circuit battery.
- Never expose battery to extreme temperatures or moisture.
- Keep away from flammable materials and direct sunlight.
- Only charge using the provided charger, cable, and/or adapters. Use of a different battery pack/charger may create a risk of fire.
- Rechargeable battery is only to be charged by an adult or under adult supervision.
- Charge on a non-flammable surface and keep away from flammable products.
- Discontinue charging if battery becomes hot, swells, smokes, or gves off a strong odor.
- Battery chargers used with the product are to be regularly examined for damage to the cord, plug, enclosure, and other parts. In the event of such damage, chargers must not be used until the damage has been repaired or replaced.
- Recycle or dispose of battery according to federal, state, and local laws.
- To prevent unintentional starting and accidents, ensure the switch is in the off position before connecting to battery pack, picking up, or carrying the appliance.
- When appliance is not in use, keep it away from paper clips, coins, keys, nails, screws, or other small metal objects that can make an electrical connection. This can short circuit the battery and may cause burns or a fire.
- Under abusive conditions, liquid may be ejected from the battery; avoid contact. If contact with skin or eyes accidentally occurs, flush with waterand seek medical help. Liquid ejected from the battery may cause irritation or burns.
- Do not expose battery pack or appliance to fire or excessive temperatures. Exposure to fire or temperature above 130°C (265°F) may cause explosion.
- Follow all charging instructions and do not charge the battery pack or appliance outside of the temperature range specified in the instructions. Charging improperly or at temperatures outside of the specified range may damage the battery and increase the risk of fire.
- Have servicing performed by a qualified repairperson using only identical replacement parts. This will ensure the safety of the product is maintained.
- Do not modify or attempt to repair the appliance or the battery pack except as indicated in these instructions for use and care.

IMPORTANT MAINTAINING
BATTERY HEALTH

- Your vacuum is designed with a lithium-ion battery pack for cordless convenience, increased vacuuming duration per charge, frequent use, and recharging.
- To maintain charge capacity and prevent battery damage, all lithium-ion batteries must be regularly used and recharged.
- All batteries naturally lose charge when not in use. If you will not be using the vacuum for an extended period, check the vacuum at least every 30 days to ensure the battery is at approximately 50% state of charge. For optimal battery life and performance recharge as needed to maintain a 50% state of charge.
- IMPORTANT: Do NOT store the battery for an extended period with above 66% or below 33% state of charge. An incorrect state of charge during storage could irreparably damage the battery and may result in reduced charge capacity, inability to maintain charge, failure to recharge, or complete inoperability of the vacuum.
- For the health of the battery, always store the vacuum in a cool, dry place. The storage location should have a consistent temperature between 40°F and 70°F (5°C and 20°C) as well as a relative humidity at 70% or lower.

FCC STATEMENT

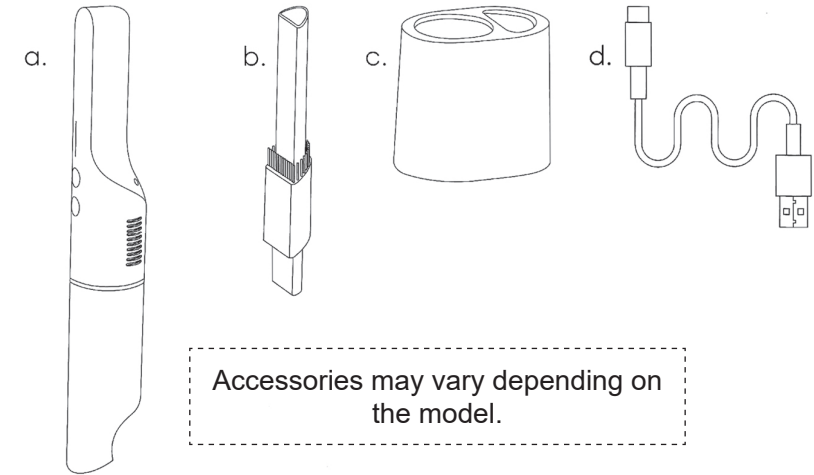
This device complies with part 15 of the FCC Rules. Operation is subject to the following two conditions:
(1) This device may not cause harmful interference, and (2) this device must accept any interference received, including interference that may cause undesired operation.
Note: This equipment has been tested and found to comply with the limits for a Class B digital device, pursuant to part 15 of the FCC Rules. These limits are designed to provide reasonable protection against harmful interference in a residential installation. This equipment generates, uses, and can radiate radio frequency energy and, if not installed and used in accordance with the instructions, may cause harmful interference to radio communications. However, there is no guarantee that interference will not occur in a particular installation. If this equipment does cause harmful interference to radio or television reception, which can be determined by turning the equipment off and on, the user is encouraged to try to correct the interference by one or more of the following measures:
– Reorient or relocate the receiving antenna for the device experiencing interference.
– Increase the separation between the equipment and receiver.
– Connect the equipment into an outlet on a circuit different from that to which the receiver is connected.
– Consult the dealer or an experienced radio/TV technician for help.

Warning: Changes or modifications to this unit not expressly approved by the party responsible for compliance could void the user's authority to operate the equipment.

SAVE THESE INSTRUCTIONS

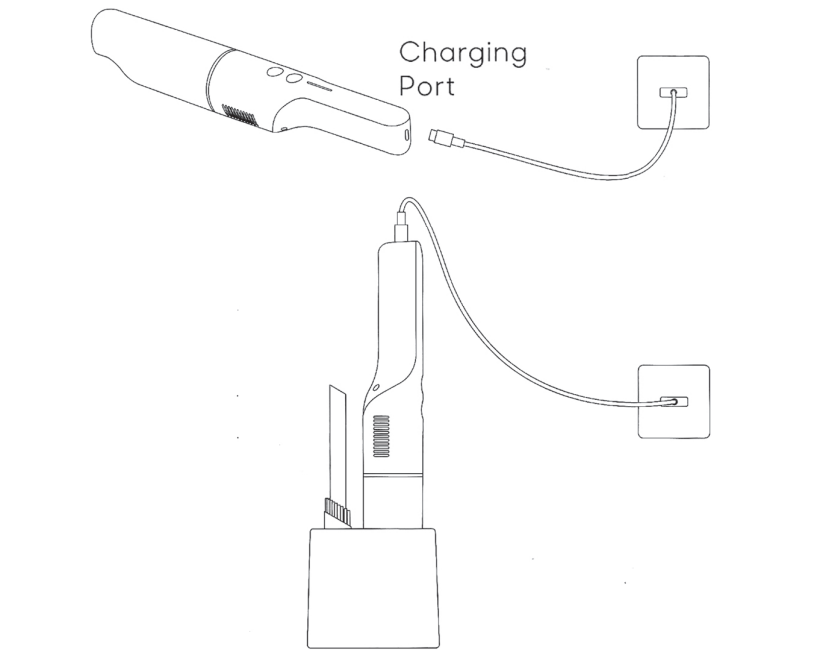
WHAT YOU GET

- a. Hand Vacuum.
- b. Combination crevice and dusting tool
- c. Stand storage base
- d. USB-C charging cord



POWER

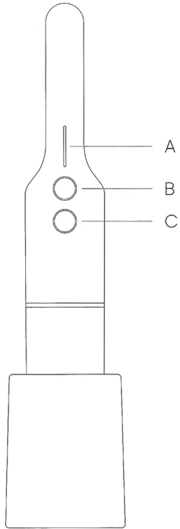
1. To charge the vacuum. Place handheld vacuum on a safe flat surface or in the storage base stand. Then plug the USB-C charging cord into the input port on the end of the vacuum handle and the other end into any USB adaptor connected to a power source.



2. Wait for the vacuum to fully charge before first use. The power status light bar shows the current charge while charging and during use. During charging, the charging status light bar will blink white and will fill to solid white as the vacuum charges.

CONTROLS

- A. Power Status Light Bar
- B. Power Button
- C. Power Mode Button

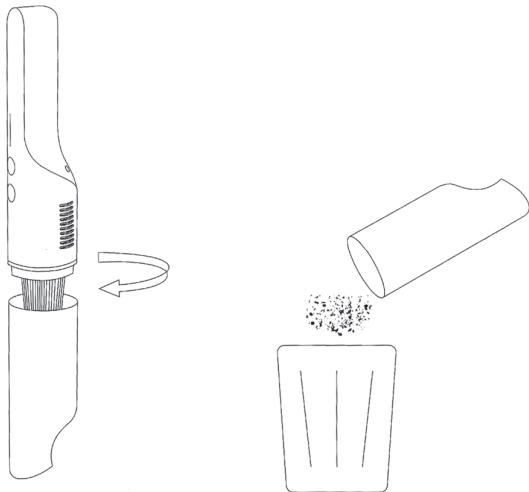


NOTE: The images shown in this manual are for illustrative purposes only and may be subject to change, the actual descriptions of control panel and their locations may vary depending on the model.

- Slide the vacuum out of the storage base and the pess the power button to power on the vacuum. Press the power button again to power off the vacuum.
- Press the power mode button to activate high-power suction mode. Both mode lights will activate. Press the power mode button again for standard suction mode.
- To use the 2-in-1 crevice tool, power off the vacuum and slide the tool into the nozzle opening. To remove a tool, slide it out of the nozzle. The 2-in-1 crevice tool can be used with or without the brush -simply slide the brush on or off as desired.

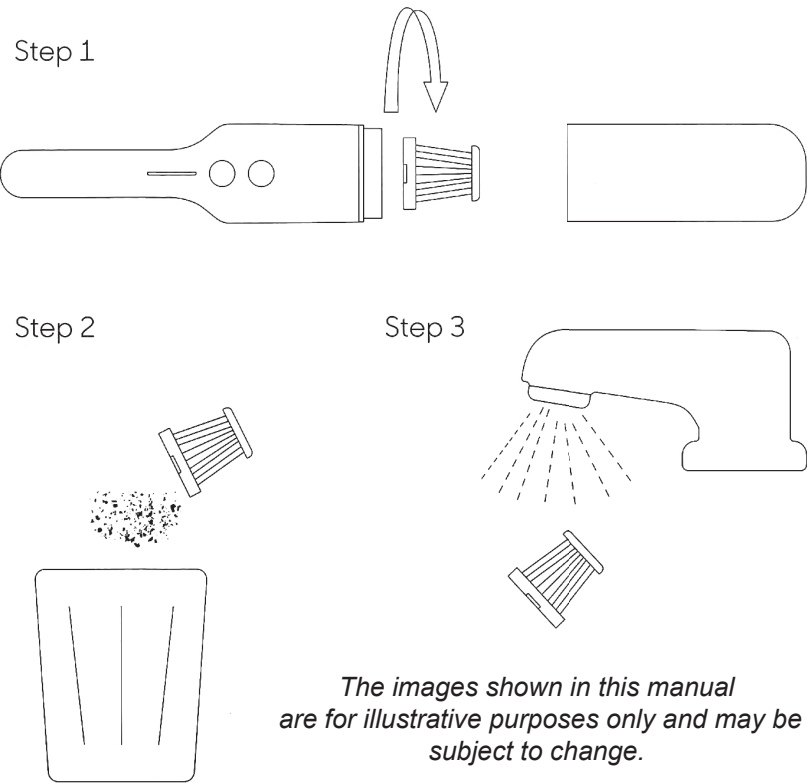
CARE INSTRUCTIONS

- For optimum performance, regularly clean the dustbin and filter.
- To empty the dustbin, hold it over a garbage can or waste bin and twist the dustbin counterclockwise to unlock and remove the dust bin and empty the dust.



- Lightly tap the filter housing to remove any remaining dust or debris. Then wipe down the dustbin interior and filter housing with a dry cloth.

- To clean the filter, twist the filter counterclockwise and remove it. Hold the filter over a garbage can or waste bin and Tap the filter lightly to remove any dust or debris. Then rinse the filter thoroughly in waterand allow to air-dry completely before reinstalling and using in the vacuum.



IMPORTANT: Do not use soap or other cleaners on the filter. Never use the filter when damp or moist. Do not use the vacuum without the filter in place.

SPECIFICATIONS

Charging voltage	5V
Battery Capacity	2200mAh
Bin Capacity	4.4 oz. (130mL)
Charging Time	3-4 Hours

Information shown here may vary

PRINTED IN MEXICO

Elbrd: J.M. / SC: 10-04-2025

OBPN: N/A / SHDML: 1018292_B

8 1 4 1 0 0 3 7 3



TROUBLESHOOTING

Notification	Cause	How to Fix
If the motor not work	Maybe the motor over temperature	Ilf the motor is abnormal, the display light will show a double red light flashing at a frequency of 5HZ for 10 cycles (4S) before turning off the light. How to remove anomalies: If the motor shuts down due to high temperature protection, cool the machine before restarting.
If the unit is not charging	May be due to excessive temperature during charging (NTC open circuit, temperature exceeding 50°C)	The display continuously flashes a red light at a frequency of 5Hz. How to troubleshoot: Allow the the battery to cool to below 40°C/104°F. This will return the unit to operational temperature.
If the discharging function is not working	May be due to overheating during operation -not within 20-70 °C, red light overheating alarm activates	A flashing red light at a frequency of 5Hz, with 10 cycles (4S). How to troubleshoot: Turn the unit off and allow the temperature to return to below 40°C/104°F, and the function should become operational.
If the the unit stops working during normal operation	During operation the battery voltage is monitored. Any battery voltage detected below 2.75V@2s will turn the motor off	A flashing red light at a frequency of 5Hz, with 10 cycles (4S). How to troubleshoot: Charge the unit.
If the dust flap comes off	During long-term use the dust flap may become dislodged	How to reinstall: Align the dust flap with the adaptive groove, then press it into place.
Dust bin will not assemble properly	Could not lock the dust bin into place peoperly	How to troubleshoot: Align the silk dot on the side of the dust bin with the dot on the air inlet cover and rotate clockwise to lock it in place.
Cannot properly reattach filter assembly	Filter assembly will not properly align with inlet cover	How to troubleshoot: Place filter assembly into groove on inlet cover and rotate it clockwise. When the vertical screen icon in the middle of the filter is aligned with the screen printing on the lower air inlet cover, prober installation is completed.