



MODEL A4.1

INSTRUCTION MANUAL

[Watch our video on How To Use Your JWLABS A4.1 Rife Machine.](#)



Disclaimer

JWLABS Machines are media adapters that act as transducers, converting audio frequencies such as the sound of music to electrical impulses which the user feels as gentle vibrations or a tingling sensation. The JWLABS Machines are not designed to nor do we intend that they will exercise any structure-function effect on the user.

These are not FDA certified medical devices and we offer them only for general well being and entertainment purposes.

Warranty

Customer understands and agrees that in the event of a failure of the device, JWLABS reserves the right to repair or replace the device with another. JWLABS may replace the device with any instrument of their choosing of greater or lesser value than the original, until such time as the defective device can be permanently replaced or repaired. In no case will repaired or replacement devices be shipped to the Customer until any loaned device in the Customer's possession is returned in good condition. JWLABS reserves the right to assess damage to any device it has made for Customer, to determine if the device has been damaged due to negligence on the part of the Customer. JWLABS assessment of damage will be final, and if the Customer is found negligent, JWLABS reserves the right to collect money for the repair or replacement from the Customer, prior to the replacement or repaired device being shipped to the Customer.

Warranty extends only to the innards of the Model A. It does not include wires or other accessories. It does not include the re-chargeable battery which is located on board. The battery can be replaced for cost at our factory.

PLEASE NOTE: Do NOT attempt to open the top or bottom of the device. Any indication that this has been attempted will void the warranty in its entirety.

Wright Laboratories, LLC

205 E. Butterfield Road, Suite 227, Elmhurst, IL 60126
888.891.1122 • 708.356.6513 • info@jwllabs.com

WELCOME TO THE GLOBAL COMMUNITY OF JWLABS MODEL A USERS!

You have made a sound decision! You have acquired a device that is the instrument of choice for people who understand the value of applying microcurrent to the body. Our instruments transform audio frequencies to electrical output which produces a tingling sensation at the place of contact. This electrical stimulation can be acquired from our specially tuned sessions or from your favorite music. Explore the sensations of our Tactio® feature which makes music a whole body experience!

JWLABS Machines are media adapters that act as transducers, which convert audio frequencies, including music, to electrical impulses the user feels as gentle vibrations or a tingling sensation.

Our instruments are not FDA certified medical devices. We offer them only for general well being and entertainment purposes.

Once you experience our Rife technology you will appreciate why our customers use our machines routinely to improve, preserve and protect their well being.

Frequency matters... Change Your Tune!

[Watch our video on How To Use Your JWLABS A4.1 Rife Machine.](#)

TABLE OF CONTENTS

Warnings	4
Cautions	5
Maintenance	5
General Background	6
The Basics of JWLABS Rife Machines.	6
What is Tactio®?	8
Operating Instructions.	9
Your New A4.1	10
Open Instructions	11
Take an Inventory	12
Your Model A4.1	12
Outside Features.	13
Getting to know your Model A4.1	13
Power Switch	13
Charging the Battery	13
Input Jack	13



TABLE OF CONTENTS

Headphone (TACTIO®) Jack.	14
Electrode Ports	14
Activity Light.	14
Polarity Switch	14
Amplitude Dial.	14
Model A4.1 Touchscreen	15
Display Screen	15
Welcome Screen	15
Selecting Your Title	15
Notes to Remember	16
Preparing for Your Session	17
Basic Instructions - GENERAL ALIGNMENT (GA)	18
Outline of General Alignment (GA) Session	19
Model A Frequency Sessions	20
Troubleshooting.	22
Supplies	23

WARNINGS

Check with your physician before beginning use of the device.

DO NOT use this device if you have a pacemaker and/or defibrillator or other sensor, monitor or electronic device.

DO NOT use the device on children under 18 years old and do NOT allow children to use the device without adult supervision.

DO NOT use the device near water.

DO NOT plug electrode wires into an electrical outlet.

DO NOT place electrodes in places on the body other than the palms of the hands and/or soles of the feet because it may cause skin irritation, injury or burns.

DO NOT apply electrodes over the heart or above the neck because it could cause serious injury.

DO NOT engage in any use of the device which is not expressly stated in our material. If the user engages in using the device for anything other than entertainment, the user accepts full responsibility for the consequences such as serious physical injury.

If the user feels any sensation of pain, burning, skin irritation, or shock stop using the device immediately and turn it off. Seek medical advice if necessary.

JWLABS devices are Media Adapters intended for
General Wellness and Entertainment purposes only.

These are not FDA certified medical devices.



CAUTIONS

Read all instructions carefully before beginning use.

Turn the amplitude dial all the way down (counter clock-wise) at the end of each session, ensuring that you begin each track with the amplitude minimized. In this position, you can make adjustments to your connections, to your track selection, or turn your device on or off.



We recommend limiting the use of the device to an hour. 60 minutes is the recommended maximum duration of a session. Usage beyond 60 minutes per session could result in temporary feelings of fatigue or headache. We encourage you to drink plenty of water before, during and/or after your sessions. If headache or fatigue persists for more than two hours, you may want to consult your physician.

Check the device before each use to make sure all components are intact and that no wires are frayed. Do NOT use device if wires are frayed or damaged. Doing so may result in a shock, or no output at all.

When using the machine with two people at a time, ensure that the person who feels the current first is in charge of the amplitude setting.

MAINTENANCE

Clean your device with a soft cloth. Do NOT apply cleaning agents to the instrument.

Store your device with the case closed to protect the inner components.

Check your electrode pins for carbon build up before each use. The carbon build up could interfere with the conductivity and could cause no output or intermittent output, which the user may experience as a shocking sensation. A fine emery board or sandpaper will prevent residue accumulation on the electrode pins.

DO NOT let the battery drain below 50% or the device may not work properly. For best results, recharge the battery when the indicator light shows 50% discharge.

GENERAL BACKGROUND

JWLABS has been producing products since 1987 which are based on the long history of Rife technology. Originally built by hand in our workshop, our devices have long been assembled in state-of-the-art factories in the US. We have stayed true to our commitment to the original analog signal (Audiophiles appreciate the significance of this, in that the output is more natural, full bodied than those created digitally. This means that with each frequency we deliver, the harmonics around that number are produced.) Our instruments are designed to provide the ability to play frequencies from an outside source, including music. This feature delivers a thrilling experience of tactile music, and provides entertainment value which is unique to our devices. We call this feature Tactio. You may also play specifically tuned frequencies from an outside source through your Model A.



The Basics of JWLABS Rife Technology

Our basic strategy has always been to provide expert frequency tuning throughout the lower end of the audio range. Though many have referenced targeted frequencies for specific health conditions, we do not make or imply such claims. Each of JWLABS frequency sessions provides concentration on certain key numbers, accompanied by sophisticated tuning techniques such as sweeping (both upward and downward) and dithering. These techniques, coupled with the original analog source of our sessions, provide a carefully composed and expertly tuned experience of electro-stimulation.



Our devices are intended to appeal to people who are not interested in learning the intricate details of Rife technology, but prefer a research based user-friendly format which is designed to enhance their General Wellness.

Our recorded sessions are a form of music. They are hand-tuned and played with skill, much like any musical instrument is played while music is recorded. The needs and preferences of the user are anticipated in the contents of each recording, or score. Satisfaction of the experience can be realized with little or no education required.

We've prepared numerous sessions for you to explore, and you may also relish the Tactio® experience which involves playing your favorite music through your machine rather than utilizing our specialized sessions. This allows you to feel the frequencies of your music — a unique and multidimensional experience. You are in for a treat!

All of our sessions are created on JWLABS Model B27, our analog instrument, and are recorded by channels A, B, C and D. The energy our machines use is a volts/amps electrical current, balanced in a way that feels good to the user. With our specialized tuning, you will have the confidence and freedom to explore numerous variations in your sessions, including emphasis on certain frequencies (and ranges of frequencies).

Some people prefer to feel the energy on their palms, others choose to apply the electrodes to the soles of their feet. Each approach will produce a variation in sensation.

With the exception of the General Alignment recording, the frequency range for each channel used from the Model B always corresponds to the four tracks of each session title as follows:

- A = Track 1, delivering 3 to 33 Hz
- B = Track 2, delivering 33 to 333 Hz
- C = Track 3, delivering 333 to 3333 Hz
- D = Track 4, delivering 3300 to 10k Hz



JWLABS
Model B

Each title is masterfully tuned throughout these ranges with specific sets of exact traditional frequencies, which have been known to be helpful for thousands of users. Our tuning is both general and specific in emphasis, ensuring that you have a comprehensive session.

WHAT IS TACTIO®?

John Wright conceived Tactio® very early in his career of developing Rife machines. He understood that the safest range of frequencies is in the audio range, and he designed his early instruments with an audio jack, making it possible to record the hand tuned frequency sessions in real time. He knew that the potential for tactile music was promising.

Do you love music? This will take your enjoyment to a whole new level. The thrill of listening to your favorite music and feeling the electron flow that these selections produce is second to none. Our devices have gone through many renditions, and we're proud to offer this safe and exhilarating experience to our customers.

What you will need:

- Input cable (provided in your startup kit.)
- Headset (wired) with a volume control
- Music source with a headphone jack (CD player, computer, tablet, iPhone or smartphone)
- Model A4

Simply plug your input cable into the device you're using to play your music. Attach your headset to the Tactio® jack and set up your electrodes for a regular Rife session. Be prepared to adjust the amplitude as the music intensifies or becomes more subdued. The display on your Model A4 will say "Tactio® mode" when you are streaming music or any other audio signal through your machine.

Tactio® will bring you hours of entertainment and will provide an entirely new way for you to introduce your friends and family to Rife technology.

It's fun, it's energizing. Put a new level of vibrancy in your life!

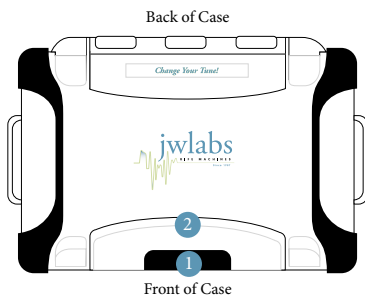




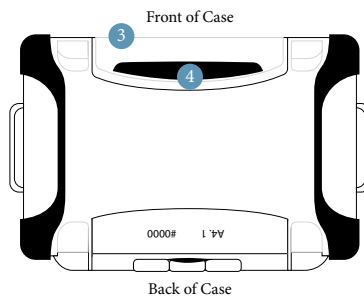
OPERATING INSTRUCTIONS

YOUR NEW A4.1

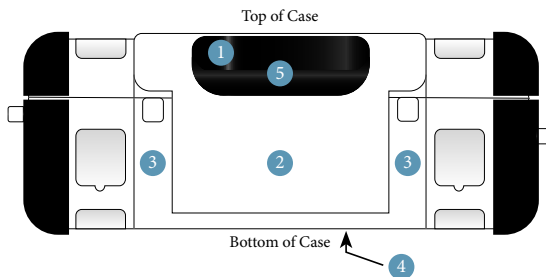
TOP VIEW



BOTTOM VIEW



FRONT VIEW

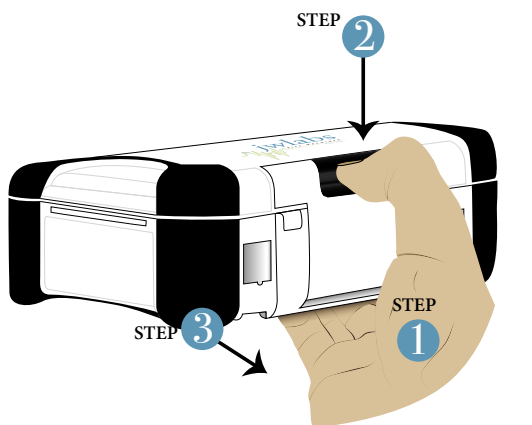


LEGEND

- 1. Button
- 2. Grip
- 3. Latch

- 4. Plastic Grip
- 5. Button Lip

OPEN INSTRUCTIONS



Step 1:

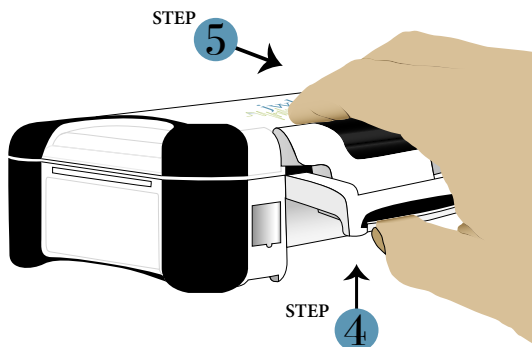
Place your thumb on the lip of the black button and wrap your fingers around the latch on the bottom of the unit so that your fingers are on the edge of the black plastic grip.

Step 2:

Press down on the lip of the button with your thumb.

Step 3:

With the button depressed, pull the latch forward with your fingers until it releases. This may take a little force.

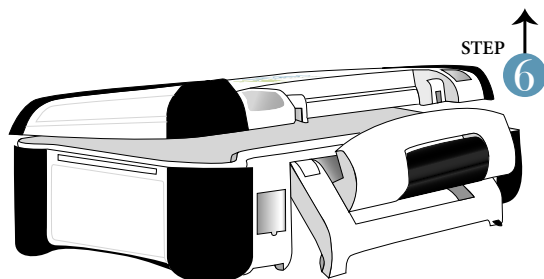


Step 4:

Lift the latch up slightly to loosen the grip at the top of the unit.

Step 5:

Pull the grip forward (away from the unit) and release.



Step 6:

Lift the top of the unit to open.

TAKE AN INVENTORY

First, take a moment to inventory what you have received. Compare the contents with the packing slip to verify that your shipment is complete. If anything is missing or appears damaged, contact us immediately. Save all packing materials.

YOUR MODEL A4.1

Your Model A4.1 Start Up Kit Consists of the Following:

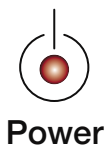
1. Two sets of Electrode Wires:
(1) 6-ft set and (1) 10-ft set
2. USB Cable and Charging Cube
3. Input Cable
4. (4) White Adhesive Electrode Patches (“Softies”)
5. Instruction Manual



OUTSIDE FEATURES

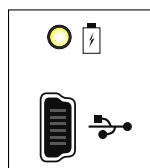
Your Model A4.1 is approximately 6.3" long x 4.7" wide x 2.2" high and weighs around one pound. The Model A4.1 is built into an extremely durable, crush-proof, water-resistant enclosure. When closed, your Model A4.1 is very secure.

GETTING TO KNOW YOUR MODEL A4.1



Power Switch

This dome switch (the raised button located in the upper left corner) is illustrated with the universal symbol for power. A red LED illuminates the center of the button. When the power is first turned on, the green ACTIVITY light will illuminate briefly. It will remain darkened until your frequencies are playing.



Charging the Battery

Make sure the power switch is turned OFF while charging the battery. You may charge the battery via the USB cable with the adapter provided or plugged into your computer.

Please Note: charging will be completed much faster when using the power supply in the wall. A yellow LED will indicate that the battery is charging. When charging is complete, the LED will go dark. Expect approximately five hours of use before needing a new charge.



Do NOT fully discharge the battery. We recommend re-charging when the battery icon indicates that 50% of power or less remains. Our engineers advise that the battery likes to be topped off.



Input Jack

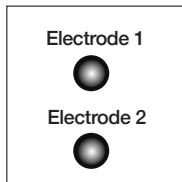
This port allows you to provide the frequency input from an outside source. Connect one end of your input cable here. (This is the white cable with a male plug on each end.) You will use this to connect one end of your input cable. The other end goes to the headphone jack on your cd player, computer, tablet, or smartphone. This is how the Music gets to your machine, providing the tactile experience. When using this feature, the screen will indicate "Tactio® mode".





Headphone Jack (TACTIO®)

This port allows you to listen to the music you have selected. Be sure to use headphones or earphones with a volume control, as your music player must have the volume at maximum. Listen to your favorite tunes through your Model A (with the electrodes in place on your palms) and you will have a tactile sensation of your music! A further option is to stream specific frequencies or series of frequencies from an alternative source.



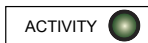
Electrode Ports

Insert an electrode wire into an ELECTRODE JACK. *(Beginners use only one electrode wire, which splits.*

This provides a negative and a positive.) Be sure to insert the larger plug on the wire in a straight downward motion.

(Do not apply torque to the connection when placing or removing electrode wire from the port. This may damage the port of your Model A.)

Activity Light



This light (set in between the Electrode ports), indicates that there is output and the electrode wires are active. This means that there is current moving through the wires.

PLEASE NOTE

The **ACTIVITY LIGHT** will illuminate briefly when the power switch is turned on. It will darken until your selected track is playing.

When using the lower tracks, (most notably on track 1), the **ACTIVITY LIGHT** blinks or pulses. This indicates the slower pulses of the frequencies on the lower tracks. As the frequencies become higher, the green light will become solid.

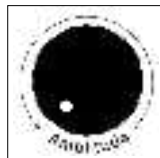


Polarity Switch

This switch changes the direction of the electron flow, allowing for a more nuanced experience.

Amplitude Dial

The **AMPLITUDE DIAL** is a ten-turn potentiometer dial that controls the amount of output, meaning the intensity of the signal. Output is measured in volts as indicated on the meter. **One full revolution equals 10 percent of the power.**



MODEL A4.1 TOUCHSCREEN



Display Screen

JWLABS' touch screen will appear when the Model A4 is turned on. You must press the screen (not just touch) to access the menu.

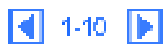
Welcome Screen

1. The Battery Icon, which appears in upper right-hand corner of the touch screen, indicates the amount of charge available.

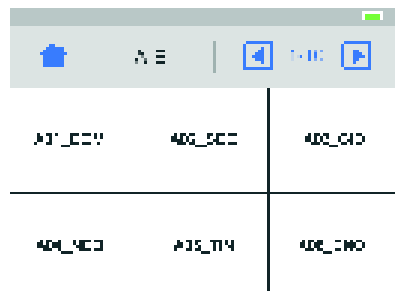
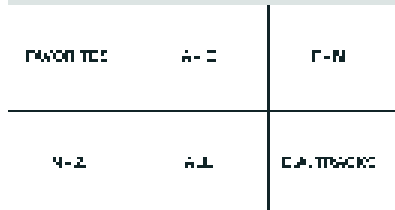
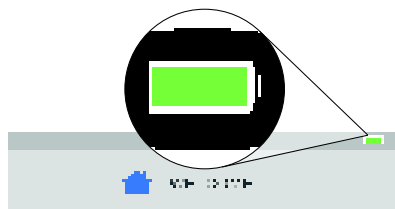
2. Menu Selections: Favorites /
A - E / F - M / N - 2 / All /
GA Tracks

Selecting Your Title

Individual Menu Screen



Use the Page Indicator and Directional Arrows to locate your session.



Session Screen



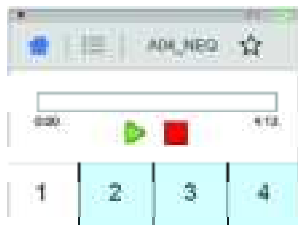
Press the Green Arrow to Play



A Yellow Pause button will appear while in use.




Press the Red Square to Stop

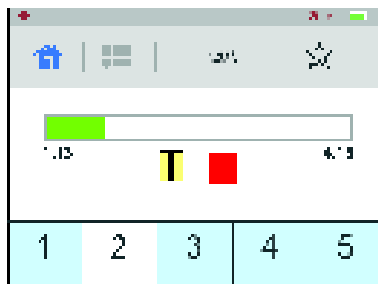


The Scroll Bar indicates elapsed time.

The Voltage Indicator located to the left of the Battery Icon on the display screen indicates the output being used (measured in Volts). The maximum is 80 Volts.

Notes to Remember

- ▶ All new users, or people who are beginning after a long hiatus will begin with Track 2 of General Alignment, building their time as recommended above.
- ▶ General Alignment (GA Tracks) is the only session which is comprised of five tracks of various lengths.
- ▶ All other Titled Sessions are composed of four tracks, each being approximately thirty minutes long.
- ▶ You will rarely, if ever, use full power and only on the highest tracks. However, It's normal to need extra power when the electrodes are placed on the soles of your feet.
- ▶ Model A4.1 offers the FAVORITES option.  You can **FAVORITE** sessions by pressing the star when your title is selected (the star will become yellow when session title is selected). This feature allows you to access your commonly used frequency sessions from the Favorites menu on the welcome screen without going through the entire menu.



- ▶ We advise that experienced users employ their device no more than an hour per day.
- ▶ We recommend that you drink plenty of water before, during and/or after your sessions.



CAUTION: Make sure your Model A is powered off and the amplitude is in the power down position before beginning these steps.

BEGINNERS will use only the General Alignment (GA) session.

1. Ensure that the polarity switch is in the positive position. (This indicates that your red tipped electrode wire is positive.)
2. Separate the red and white ends of your electrode wires to about 12 inches. Insert the pins on the ends of the wires into the port on the electrode patches. Place the electrode patch with the red lead wire (indicating positive) onto your right palm and the electrode patch with the white lead wire (indicating negative) onto your left palm.
3. Power on your Model A unit. Press the home screen to bring up the main menu. Select GA Tracks (General Alignment, located in the lower right corner), then select TRACK 2.
4. With the amplitude turned down and the electrode patches in place on your palms, press PLAY to begin your session. (We recommend beginning with TRACK 2 because TRACK 1 is more intense.)
5. Turn the AMPLITUDE clockwise to a level that is COMFORTABLY STRONG, but not more than four to five turns. This guidance generally applies to the lower tracks of any of the recordings. It's normal to tolerate more amplitude on the higher tracks. Turn the AMPLITUDE all the way down if you pause during a session as well as between the tracks of your session.
6. At the end of your session, turn the AMPLITUDE all the way down (counter clockwise). Turn the machine off.
7. Remove electrode patches from your palms and place them back onto the plastic shield provided. This will protect the patches and help them last longer. Remove all replaceable wires from your unit and close the case.
8. If you would like to use the Tactio® feature, insert one end of the Input Cable into the jack marked "Input" and the other end of the Input cable into the headphone jack of your media source.

Basic Instructions - GENERAL ALIGNMENT (GA)

We recommend that you begin your exploration conservatively, say with a ten - fifteen minute session. (This is true even for folks who have used other Rife machines.) Allow your body to get used to the experience before gradually building up your time to about an hour.

Our General Alignment Rife session is where everyone begins.

It's ideal for beginners AND for folks re-starting on their machine after a lengthy furlough. This session is also excellent for routine maintenance. The healthy person will be able to move consistently through the tracks of the General Alignment (GA) session smoothly.

Our Rife sessions are divided into tracks. The lower tracks deliver the lower frequencies, moving higher as we go up in tracks, the highest being the last track of a given session. You will note a different sensation on each track at the place of contact (usually palms and/or soles of feet).

Most users will begin with Track 2 for not more than 10 minutes per day, five days in a row, taking two days off each week. *(In certain circumstances, the user will begin with Track 5 (please call us for more information). This is a five minute track.*

Start each track before increasing Amplitude. This will avoid any sensation of a sudden burst of output.

Begin as follows

- ▷ Track 2 (10 minute track)
- ▷ After completing this Rife session for 3-5 days, introduce ten minutes of Track 3 — After a couple days here, bring in ALL of track 3.
- ▷ After 3-5 days of tracks 2 and 3, add Track 4 for ten minutes. When you have completed 3 to 5 days of this, bring in ALL of Track 4 and Track 5.
- ▷ When you have completed 2-5, you may circle back to Track 1 — We're sometimes as low as 3hz on the beginning of any Track 1.
- ▷ You will now use the entire session, tracks 1 through 5. Tracks 1 through 5 comprise the entire General Alignment session, totaling about 73 minutes.
- ▷ You will note that the frequencies on the lower tracks are quite slow. They have a more pronounced “beat” and you will prefer to have the amplitude lower than on the other



tracks. This is perfectly normal. The final track of any recording, on the other hand, is composed of much higher frequencies which require more power. You will notice a desire to intensify the amplitude accordingly.

- ▶ ***Set the amplitude to your comfort level.*** Feel free to adjust it at any time, given the range of frequencies you are using. You may wish to make adjustments to the amplitude, especially when you are using Music as the source of your frequencies. Each instrument has a different “voice” and each type of music has a different rhythm. The nature of your music selection may prompt you to adjust the amplitude higher or lower as you progress through each musical selection. This is normal.

Outline of General Alignment (GA) Session

Track 1 - Delivers 3 - 33hz (23 minute sweep)

These frequencies are very slow. Some are slower than our brain waves in the waking state. For this reason, people sometimes feel more calm when using this track. Others may feel more energized. We recommend that users add this track to their routine only after they have progressed through tracks 2-5.

Track 2 - Delivers 33 - 404hz (10 minute sweep)

These frequencies remain in the lower end of the range which we address. This is where beginners initiate their exploration.

Track 3 - Delivers 383hz - 700hz (17 minute sweep)

These mid-range frequencies will have a noticeably different feel from the ones in the lower range.

Track 4 - Delivers 900 - 4,000hz (20 minute sweep)

This higher mid-range of frequencies may prompt you to desire more amplitude. It's okay to turn the amplitude up to a level that's “comfortably strong”.

Track 5 - Delivers 3300 - 5,000hz (5 minute sweep)

These higher frequencies will feel much more subtle.

[Watch our video on How To Use Your JWLABS A4.1 Rife Machine.](#)

MODEL A FREQUENCY SESSIONS

These frequency sessions have been expertly hand tuned from our old style analog Model B. With supremely refined tuning, we have emphasized traditional target numbers and we've employed sweeping techniques which span the entire spectrum of therapeutic frequencies.

JWLABS devices are intended for General Wellness and Entertainment only. No health claims are made or implied.

A

A01_DOM
A02_SCE
A03_CID
A04_NEQ
A05_TIN
A06_ENO
A07_HES
A08_DSQ
A09_COH
A10_ZHE
A11_IGN
A12_LER
A13_OPE
A14_ENO
A15_EMI
A16_EUR
A17_ORE
A18_THR
A19_TIS
A20_USQ
A21_XIE
A22_PEN
A23_PET
A24_CQQ
A25_TER
A26_TRI
A27_THR
A28_THM
A29_TRO
A30_AXI
A31_HLE
A32_TOI

B

B01_OLI
B02_CKA
B03_LLI
B04_RDQF
B05_LAD
B06_IST
B07_OODD
B08_OOPH
B09_OOPL
B10_ILS
B11_NESB
B12_EAS
B13_EAST
B14_EATH
B15_IGHD
B16_ONC
B17_UIS
B18_BONP
B19_NIO
B20_RNSG
B21_RNSR
B22_RSI
B23_TTEL

C

C01_NCEG
C03_NDIA
C04_RBU
C05_RDI
C06_RPA
C07_TAR

C08_ARR
C09_REBP
C10_REBF
C11_RVIL
C12_RVI
C13_EMO
C14_ICK
C15_ILB
C16_ILDD
C17_LDFC
C18_LDHC
C19_LDSC
C20_LDSH
C21_LIC
C22_LIT
C23_NJU
C24_NST
C25_NVU
C26_RNS
C27_STA
C28_AMP
C29_OHN
C30_TSQ
C31_STI

D

D01_NDR
D02_AFN
D03_PRE
D04_TOX
D05_ABE
D06_ARR

D07_GES
D08_PTH
D09_STEO
D10_STES
D11_ZZI
D12_OPS
D13_UGQA
D15_SME
D16_SPE

E

E01_OLI
E02_RSQ
E03_ZEM
E04_EMA
E05_ECTS
E06_LARG
E09_ILE
E10_STBV
E12_OPH
E13_STAT
E14 ESTR
E15_ESQ

F

F01_CIAC
F02_CIAP
F03_INT
F04_SCI
F05_TIG
F06_VER
F07_BRO

F08_SSU
F09_STU
F10_ATU
F11_UQQ
F12_UKE
F13_ODQP
F14_OTSO
F15_OST
F16_NGU

G

G01_LLB
G02_LLS
G03_NGR
G04_STR
G05_AND
G06_ANDF
G07_AUC
G08_ITE
G09_NAD
G10_NOR
G11_UTQ
G12_AVE
G13_MSQ

H

H01_IRQ
H02_LLU
H03_NGO
H04_YQFE
H05_ADQP
H06_ADA



H07_ART
H08_MOR
H09_MRR
H10_PAT
H11_RNI
H12_RNID
H13_RPE
H14_CCO
H15_PQPA
H16_VES
H17_ARS
H18_TQFL
H19_DRO
H20_PER
H21_PRC
H22_PRT
H23_POX

I
I01_EOC
I02_POT
I03_CREH
I04_DIG
I05_FANP
I06_FEC
I07_FECD
I08_FLA
I09_FLZ
I10_JUR
I11_SECB
I12_SOM
I13_TEL
I14_TERN
I15_TESI
I16_TESS
I17_TESG
I18_TOX
I19_RIT
I20_CHI

J
J01_UND
J02_INT

K
K01_DNEG
K02_EEQP

L
L01_CTA
L02_SSI
L03_XAT
L04_PRO
L05_UCO
L06_UKE
L07_UKO
L08_VERG
L09_COMA
L10_MBA
L11_MBAV
L12_NGS
L13_PUS
L14_MEQD
L15_MPHS

M
M01_LAR
M02_ASJ
M03_LAN
M04_MOR
M05_NIED
M06_NIN
M07_NOR
M08_NSE
M09_NSTC
M10_NTAD
M12_TAL
M13_GRA
M14_NGO
M15_TIOS
M16_LTIS
M17_MPS
M18_SCL
M19_SCUD
M20_COP

N
N01_USE
N02_CKQ
N03_PHR
N04_RVE
N05_RVEI
N06_URA
N07_URS
N08_URI
N09_URO
N10_COT
N11_SEQD

O
O02_CIPN
O03_CHI
O04_TEO
O05_TFY
O06_ARIG

P
P01_INQG
P02_NCR
P03_RAS
P04_RAT
P05_RKI
P06_LVI
P07_RIC
P08_RID
P09_AGO
P10_ARY
P11_LES
P12_NWO
P13_ACE
P14_ASM
P15_EUR
P16_EUM
P17_ISOG
P18_LIO
P19_LYP
P20_OST
P21_ORI

P22_OSI
P23_ORR

R
R01_BIE
R02_EUM
R03_EUMA
R04_INI
R05_CKE
R06_NGW

S
S01_RCO
S02_ARLF
S03_IAT
S04_URV
S05_MIQP
S06_ING
S07_NUS
S08_NUT
S09_INQ
S10_EEPS
S11_IPPD
S12_ALL
S13_ELL
S14_ELLM
S15_EEZ
S16_REQT
S17_ASM
S18_ERM
S19_LEE
S20_OND
S21_RAI
S22_AMM
S23_APH
S24_ERI
S25_OMA
S26_ONE
S27_REP
S28_REX
S29_ROK
S30_YQQ

S31_NST
S32_PRA
S33_RGE
S34_ELL
S35_NDR
S36_PHI

T
T01_STE
T02_TAN
T03_ALA
T04_ROM
T05_ROB
T06_RUS
T07_YMU
T08_YRO
T09_SSU
T10_NSI
T11_OTH
T12_XICR
T13_ACH
T14_AUM
T15_BER
T16_MOR
T17_PHOF

U
U01_CER
U03_ETH
U04_TIC

V
V01_RUS

W
W01_RTS
W02_IPL
W03_RMS

Y
Y01_LLOF

TROUBLESHOOTING

Problem: Not feeling current/No output.

First, make sure your activity light is illuminated to bright green. If not, be sure that the volume of your media player is at maximum. If it is, check your connection at the electrode jack. Check that the connections of electrode wires are firmly in place.

If you can't feel the current on a higher frequency, try turning up the amplitude. It's normal to require more power on the higher frequencies, which are on the higher tracks. Some people will not feel it at this level, others do. Both are normal.

Check the pins on ends of the wires, and make sure they aren't darkened from use. If they are, you can easily clean them using an emery board or fine sandpaper.

Test your other set of wires. The tiny copper wires inside the cable may be broken. If so, it's time to order a replacement set.

Another possibility is that there is a break in one or more of the very fine wires that compose the electrode wires. In this case, they will have to be replaced.

Problem: Irritation of skin at site of electrode placement.

With continued use, the adhesive on the patches degrades and may interfere with the quality of your contact. **REPLACE THE PATCHES WITH NEW ONES.**

With continued use, the pins on the ends of the electrode wires may become blackened from carbon build-up from the patches. **USE A FINE EMERY BOARD OR SANDPAPER TO CLEAN PINS.**

Typically, our users are placing electrodes on the palms or the soles of the feet. The skin at these locations is more robust than other delicate areas. Some people are more sensitive than others, so we suggest that you **REPOSITION THE PATCHES EVERY TEN MINUTES OR SO.** (*Pause the recorded sessions and turn the amplitude all the way down before doing this.*)

TROUBLESHOOTING

Make sure the pins on the electrode wires are clean. They may become darkened from multiple uses in the electrode patch. A fine emery board will clean carbon build-up or discoloration. This build-up may interfere with a proper connection.



Do You have more questions?

Email us at info@jwllabs.com

Or give us a call at 888.891.1122 or 708.356.6513

(We're on Central time.)

SUPPLIES

In the course of using your Wright Laboratories frequency instrument, you will need to re-order supplies from time to time. Please go to <https://jwllabs.com> for a complete list of supplies.

[illegible]