

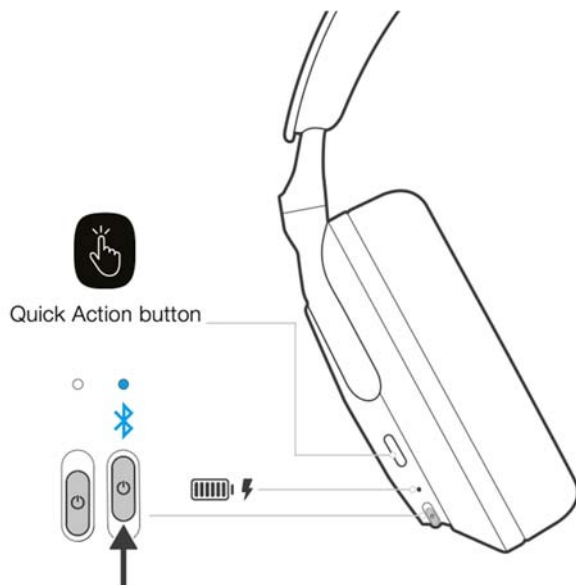
8<sup>th</sup> November 2024.

- Carton Contents
  - Over-ear wireless headphones
  - Storage case
  - USB-C to USB-C charging cable
  - USB-C to 3.5 mm audio cable
  - Document pack
- Getting to Know Your Headphones
  - We recommend installing the Bowers & Wilkins Music app on your iOS or Android device. This allows you to configure your headphones in detail and provides helpful hints and tips to make the most of your new headphones.

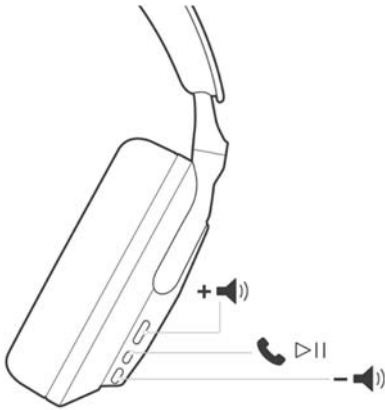


[bowerswilkins.com/downloadapp](https://bowerswilkins.com/downloadapp)

- Switching Headphones On and Off
  - Switching On
    - The power switch is located on the right earpiece. Slide the power switch up to the middle position. An audible cue will be played and the LED indicator will light up.
  - Switching Off
    - Slide the power switch to the bottom position. An audible cue will be played and the headphones will power down when the LED indicator is no longer lit.
- Bluetooth Pairing
  - Slide the power switch to the upper position and hold for 5 seconds to enter Bluetooth pairing mode.
- Quick Action Button
  - Use the Quick Action button to adjust environmental settings or speak to a voice assistant.

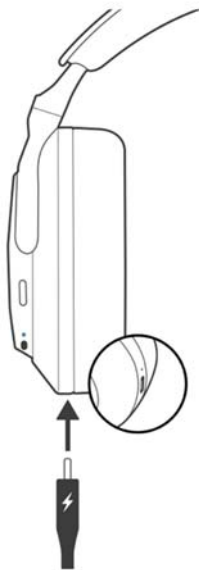


- Headphone Controls
  - The buttons on the right earpiece are used for media playback and telephony.



- Media Playback
  1. Play or pause: Press the Play/Pause button once.
  2. Play next track: Press the Play/Pause button twice in quick succession. Note: functionality dependent on source device.
  3. Play previous track: Press the Multi-function button three times in quick succession. Note: functionality dependent on source device.
  4. Increase Volume: Press the Volume + button.
  5. Lower Volume Press the Volume - button.
- Telephony
  1. Answer an incoming call: Press the Play/Pause button once.
  2. End a call: Press the Play/Pause button once.
  3. Decline an incoming call: Hold the Multi-function button for 2 seconds.
  4. Switch between two calls: With two calls active, press the Play/Pause button twice.
  5. Merge two calls: With two calls active, hold the Play/Pause button for 1 second.
  6. Toggle mute: While on a call press the Play/Pause button three times.
- Intelligent Features
  - Environmental Controls
    1. Active Noise Cancellation
      - Noise cancellation is a series of advanced technologies that aids in removing undesired noise from the surrounding environment. The headphones use built-in microphones to pick up and cancel out ambient sound for a more comfortable listening experience.
    2. Ambient Pass-Through
      - The headphones also feature an ambient “Pass-Through” mode, which allows in some external sound from the surrounding environment, allowing safety announcements or conversations to be heard without taking the headphones off.
      - By default, the Quick Action button on the left earpiece will cycle through the following modes, but the button can be customised from the Bowers & Wilkins Music app.
        - Noise Cancelling On
        - Pass-Through On
        - Noise Cancelling and Pass-Through Off.
    3. Voice Assistance
      - Your connected device’s voice assistant can be assigned to the Quick Action button on the left earpiece from the Bowers & Wilkins Music app.
    4. Wear Sensors
      - Power Saving

- The headphones incorporate our latest enhanced wear detection sensors in both earpieces), enabling intelligent battery conservation by pausing media playback and entering low power standby mode when removed from the head. When worn again, the headphones automatically wake and connect to the last connected Bluetooth device.
- Playback Control
  - During media playback, the headphones will automatically pause when either earpiece is lifted from the ear. If playback has been paused, placing the earpiece back on the ear will resume playback. The standby timer and wear sensor features can be adjusted from the Bowers & Wilkins Music app.
- Battery Charging and Power Saving
  - Your headphones come with the battery partially charged and may be used immediately. For best practice we recommend you fully charge the headphones before first use. Please allow up to 2 hours to fully charge. The headphones can be used while charging.
  - To charge:
    1. Use the supplied USB-C cable and connect one end to a wall charger or powered computer port.
    2. Connect the other end of the cable to the USB-C socket on the headphone's left earpiece.



- Bluetooth Connection
  - Pairing
    - Your headphones are designed to stream media wirelessly from Bluetooth audio devices, such as smartphones, tablets or personal computers. To do so, the headphones and source audio device must first be paired.
    - Pairing iOS System with Bowers & Wilkins Music App Installed
      - We recommend adding your headphones to the Bowers & Wilkins Music app. This allows you to configure your headphones in detail and provides helpful hints and tips to make the most of your new headphones.
      - During the process of connecting your headphones to the app for the first time, you will also be prompted to pair the headphones as an audio accessory. Tap on the confirmation popup to complete the pairing process.

- Pairing Android Devices Supporting Google Fast Pair Service (GFPS)
  1. Switch on your headphones and place them no further than 10 cm (4 inches) away from your Android device (with Bluetooth enabled).
  2. The first time you switch on your headphones, Bluetooth pairing mode will be enabled, the indicator will flash blue. If pairing mode is not enabled, please slide and hold the power switch to the upper (Bluetooth icon) position for 5 seconds, let go when the indicator blinks blue and an audible cue is heard.
  3. A GFPS (Google Fast Pair Service) notification will pop up showing that your device has been detected and request to start the pairing process.
  4. Press the Connect button to enable pairing; successful connection will be shown in popup.
  5. Once paired, the popup will direct you to the Google Play store to install the Bowers & Wilkins Music App.
- Pairing All Other Devices
  1. The first time you switch on your headphones, Bluetooth pairing mode will be enabled, the indicator will flash blue. If pairing mode is not enabled, please slide and hold the power switch to the upper (Bluetooth icon) position for 5 seconds, let go when the indicator blinks blue and an audible cue is heard.
  2. Ensure the Bluetooth feature is enabled on the audio device, headphones will appear in the discovery list; select it to pair.
  3. The indicator will flash blue while pairing is in progress, this will change to solid blue and an audible cue will play when pairing is successful.
  4. Your headphones will remember up to eight paired Bluetooth devices. Repeat the above steps to pair more devices.
- Multiple Bluetooth Connections
  - The headphones can be paired with up to two devices simultaneously but note that you can only play audio or take calls from one device at a time.
    - To switch between two devices:
      - Pause audio on the first device or use the Play/Pause button.
      - Play audio from the second device and the headphone will automatically switch over.
      - When streaming audio, receiving a call on the second device will automatically pause playback on the first device and the call will be routed to your headphones.
      - You can manage connections in further detail using the Bowers & Wilkins Music app.
- Auxiliary Connection
  - In addition to Bluetooth, your headphones can also connect to audio sources using the supplied 3.5 mm audio or USB cables.
    - Connecting with the 3.5 mm Audio Cable
      - The 3.5 mm audio cable enables your headphones to be used with a device supporting an analogue output, such as a conventional headphone socket on aeroplanes, smartphones or a traditional hi-fi system.
    - 1. Insert the supplied USB-C to 3.5 mm audio cable into the headphone's USB-C socket on the right earpiece.
    - 2. Insert the other end into the appropriate socket on your device.
    - 3. Your headphone will automatically disconnect from any Bluetooth devices.
      - Note: Your headphones must have sufficient charge and be switched on to play audio from an analogue source device. The volume and play/pause buttons will not function when you are using the 3.5 mm interface
- Connecting with the USB Cable

- The USB connection enables your headphones to function as a USB sound output device when connected to a capable computer.
  1. Insert one end of the supplied USB-C to USB-C cable into the headphone USB-C socket on the left earpiece.
  2. Insert the other end into the appropriate socket on your computer.
  3. The headphones will automatically disconnect from any Bluetooth devices.
  4. Find and select your headphones from the computer's audio output control panel.
- Note: The headphone battery will also charge when connected to a capable USB port.
- Bowers & Wilkins Music App
  - The Bowers & Wilkins Music app is available for free on iOS and Android devices and provides extended setup and adjustments to features such as Active Noise Cancellation, Ambient Pass-Through and EQ settings. The app also provides further functions such as device naming, connection management and headphone software updates.
    - To set up your headphones in the app:
      1. From your Android or iOS device, download and install the Bowers & Wilkins Music app.
      2. Ensure your headphones are switched on.
      3. Launch the app, then read and follow the instructions pertaining to app notification and permissions.
      4. The app should detect your headphones automatically and invite you to set up your headphones; follow the in-app instructions to complete the setup process.
      5. If your headphones are not detected automatically, navigate to the Settings page, tap add product and follow the in-app instructions.
  - Controlling Your Headphones
    - Commonly used features of your headphones are accessible directly on the app homepage:
      - Battery status
      - Environmental controls (Noise Cancellation, Pass-Through)
      - Device connections 8.2.1 Headphone Settings Page
      - Other settings can be adjusted from the Settings page. Tap the icon at the bottom of the screen to enter the Settings page, then select your headphones from the list.
  - Environmental Controls
    - Set the desired environmental control from the following options:
      - Noise Cancelling On
      - Pass-Through On
      - Noise Cancelling and Pass-Through Off
  - EQ
    - Use the sliders to customise the tone of your headphones.
  - Connections
    - The two most recently connected Bluetooth devices are shown in the Connections shortcut buttons. The buttons will appear grey if not currently connected. Tap the buttons to attempt reconnection. If only one device is shown, tap ADD DEVICE to place the headphones into Bluetooth pairing mode to pair them with a new device.
    - Tap the CONNECTIONS heading to view more detailed connection settings, including previously connected devices (headphone will remember up to eight devices).

- Once in the Connections page, swipe a device left to delete a device from the list. Swipe a device right to make it the preferred device to connect to when the headphones are switched on.
    - Toggle Auto-connect to last device to prompt the headphones to connect to the previously connected device when they are switched on.
    - Tap PAIR A NEW DEVICE to place the headphones into Bluetooth pairing mode and pair them with a new device.
  - Quick Action Button
    - The left earpiece of your headphones features a button that provides quick access to commonly used functions. Customise the function of this button from the app.
    - Environmental Controls – each press of the Quick Action Button cycles through:
      - Noise Cancelling On
      - Pass-Through On
      - Noise Cancelling and Pass-Through Off
    - Voice Assistant – press the Quick Action Button to activate your device’s voice assistant.
- Device Management
  - Toggle Auto standby on to place the headphones into a power-saving state after 15 minutes of inactivity.
  - Toggle Wear sensor on to enable intelligent playback control; lift an earpiece or remove your headphones to pause playback. Place them back on your ears to resume playback.
- Rename product
  - Tap Rename product to choose a new Bluetooth name for your headphones. Note that devices already paired with the headphones may still reference the previous name.
- Headphone Software Updates
  - Bowers & Wilkins will occasionally make available software updates that refine and optimise the performance of your headphones or add new features. The Bowers & Wilkins Music app will notify you when a software update is available. Tap on the notification and then follow the in-app instructions.
- Power Cycle and Reset
  - The reboot/reset process may generate noise in the headphones – do not wear during this process.
    - Power Cycle
      - To reboot your headphones, remove the headphones from your head and remove any cables from the headphones. Simultaneously hold the Volume + and Volume - buttons for 10 seconds until the indicator LED extinguishes. Release the buttons when the indicator lights up again. Rebooting your headphones will not reset their internal settings or clear the paired device history.
    - Factory Reset
      - You can clear the paired device history and restore all settings to their factory defaults. Remove the headphones from your head and remove any cables from the headphones. With headphones powered on, simultaneously hold the Volume +, Volume - and left earpiece Quick Action button for 10 seconds until the indicator LED extinguishes. Release the buttons when the indicator lights up again; the headphones will be ready to pair to a device. Alternatively, you can perform a factory reset from the headphone’s settings page of the Bowers & Wilkins Music app.