

USER GUIDE

MEDiCHARGE FLEX

CPAP BATTERY



CONTENTS

1.	Overview	4
	Key Features	4
	Package Contents	4
	Unit Diagram	5
	LED Display	6
2.	Operation	6
	Powering On	6
	Voltage Switching	7
	CPAP Connections	7
	LED Light	8
	Wireless Charging Pad	8
	Charging	9
3.	Specifications	10
4.	Troubleshooting	11
	Maintenance	12
5.	Safety Precautions	12
6.	Contact Us	Back Page


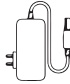
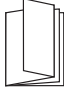

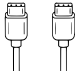
OVERVIEW

The Medicharge Flex is an ultra compact, portable power solution designed for users who need a reliable, adjustable DC output voltage on the go. While this is perfect for off grid CPAP users, it is also ideal for powering other sensitive devices that require a specific input voltage. Built tough with a rugged, protective casing and advanced safety features, the Medicharge Flex ensures performance in any situation. Additionally, it supports pass through charging, allowing you to output power while recharging the unit, maximising convenience and extending run time.

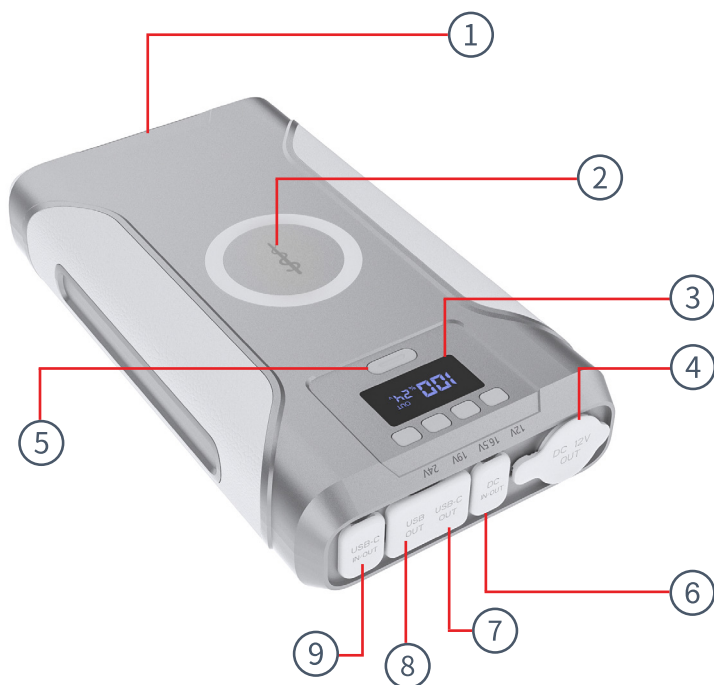
KEY FEATURES

- Lightweight and portable
- Simple LED display
- Adjustable DC output voltage
- Wireless charging pad
- Pass-through charging
- LED torch
- Various USB/C output options
- 12V 10A cigarette socket output

PACKAGE CONTENTS

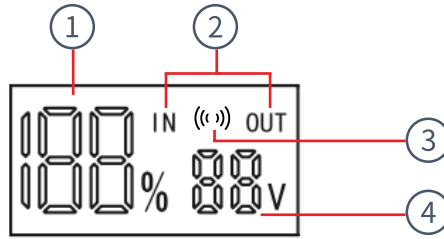
 Medicharge Flex	 AC Adapter	 User Guide	 Protective Cover	 USB-C to USB-C cable
---	---	---	---	--

UNIT DIAGRAM



- | | |
|----------------------------|--------------------|
| ① LED LIGHT | ⑥ DC IN/OUT |
| ② WIRELESS CHARGING PAD | ⑦ USB-C OUTPUT (2) |
| ③ LED DISPLAY | ⑧ USB OUTPUT |
| ④ CIGARETTE LIGHTER OUTPUT | ⑨ USB-C IN/OUT (1) |
| ⑤ POWER CONTROL BUTTON | |

LED DISPLAY



- | | |
|--------------------------|--------------------------------------|
| ① STATE OF CHARGE | ③ WIRELESS CHARGING INDICATOR |
| ② IN/OUT STATUS | ④ DC OUTPUT VOLTAGE |

OPERATION

POWERING ON

To turn on the Medicharge Flex, press the power control button. The LED display will light up, indicating the unit is powered on and ready for use.

Once the unit is powered on, the display and wireless charging symbol will adjust based on usage. Even when the screen turns off, any ports in use will continue to stay on and supply power until they are disconnected.

- If only the wireless charging pad is being used, the wireless charging symbol will disappear after 1.5 minutes, and the screen will turn off after 2 minutes.
- If any ports are active excluding the wireless charging pad, the wireless charging symbol will disappear after 1.5 minutes, and the screen will turn off after 5 minutes.
- If both the wireless charging pad and other ports are active at the same time, the screen and the wireless charging symbol will turn off after 5 minutes.

VOLTAGE SWITCHING

With your Medicharge Flex, you're able to switch between DC output voltages by following these steps below:

NOTE: Voltage switching is only available on the DC IN/OUT port, the other output ports operate at a fixed voltage.

1. To select the desired voltage (12V, 16.5V, 19V or 24V), press and hold the corresponding button for 3 seconds.
2. The selected voltage will appear on the screen and flash for 5 seconds before turning solid. Once the display is solid, the voltage is set.
3. To switch to a different voltage, hold the corresponding button to the current voltage for 3 seconds, then repeat step 1 to select a new voltage.
4. To turn off the output completely, hold down the corresponding button to the current voltage for 3 seconds.

CPAP CONNECTIONS

The Medicharge Flex is compatible with almost all CPAP machines. Below are the adapters required for some of the most popular models.

ResMed AirSense 10™ &
ResMed AirCurve 10™



ResMed AirSense Mini™
& ResMed AirSense11™



ResMed S9™



Phillips DreamStation™ &
Phillips DreamStation 2™



All trademarks are the property of their respective owners. The use of these trademarks does not imply any affiliation with or endorsement by the trademark holders.

LED LIGHT

With the unit powered on, double pressing the power control button will turn on the LED light at full brightness. Pressing the button again will reduce the brightness to 50%, followed by SOS mode, then strobe mode. Another press of the button after strobe mode will restart the cycle from full brightness.

NOTE: While any LED light mode is active, double pressing the power control button will turn off the LED light.

Operation	Light Mode	Brightness Level
Double Short Press	1st White Light	100 %
2nd Short Press	2nd White Light	50 %
3rd Short Press	SOS Light	100 %
4th Short Press	Strobe Light	100 %

WIRELESS CHARGING PAD

To enable wireless charging, press the power control button. Place your device on the circular pad located at the front of the unit, ensuring proper alignment to allow the device to charge.

You will know the wireless charging pad is active when you notice the wireless charging indicator (()) is illuminated . The maximum power output of the charging pad is 15W.

CHARGING

There are three different ways you can charge your Medicharge Flex; each outlined below:

AC Adapter:

1. Plug the AC 240V adapter into the DC IN/OUT port.
2. Connect the other end to a suitable AC 240V power source.

This will charge the unit from 0-100% in 8 hours.

USB-C:

1. Plug the USB-C cable into the USB-C IN/OUT (1) port.
2. Connect the other end to a suitable power source.

This will charge the unit from 0-100% in 4 hours.

Solar:

Plug an unregulated solar panel (12V - 24V) into the DC input port ontop of the unit. The maximum input of the solar panels is 100W and the maximum voltage is 24V (do not exceed 24V).

This will charge the unit from 0-100% in 4 hours, provided your solar system is delivering 100W in ideal sunlight conditions.

We recommend using the iTechworld 100W Solar Blanket paired with the 50A-5mm Anderson Adapter.



100W Solar Blanket



50A-5mm Anderson
Adapter

SPECIFICATIONS

General Specifications	
Model Name	Medicharge Flex
Dimensions	230 x 125 x 44mm
Weight	1.5kg
Operating Temperature	0°C ~ 40°C
DC Input	12V - 24V 100W Max
USB-C Input (1)	5V/3A 9V/3A 12V/3A 15V/3A 20V/5A 100W Max
USB-C Output (1)	100W
USB-C Output (2)	30W
USB Output	5V/3A 9V/2A 12V/1.5A
DC Output	12V/6.7A 16.5V/4A 19V/3.8A 24V/3.8A
Cigarette Lighter Output	12V/10A
Wireless Charging Pad	15W
Battery Specifications	
Battery Type	Lithium
Battery Pack Rated Capacity	276.48Wh
Battery Pack Rated Voltage	14.4V
Cycle Life	1000

TROUBLESHOOTING

Issue	Possible Cause	Solution
The unit does not turn on	Battery is depleted	Recharge the unit using an appropriate power source.
No DC output power	Incorrect voltage selected or loose connection	Check that the correct voltage is selected and ensure all cables are securely connected.
Wireless charging not working	Device is not placed correctly on the charging pad	Ensure the device is centered on the circular charging pad. Remove any obstructions such as cases or metal objects.
LED light not turning on	Unit is off or button press incorrect	Make sure the unit is powered on. Double press the power control button to activate the light.
Voltage not changing	Current voltage output is still active	Turn off the current voltage output before selecting a new voltage.
The unit is not charging	Faulty cable or incompatible charger	Try a different charging cable and power source, ensure the power source meets the required input specifications.

MAINTENANCE

To keep your Medicharge Flex performing at its best, make sure the battery is charged to at least 75% before storing to prevent the unit from being over discharged. To maintain battery pack health and extend its cycle life, it is important to fully charge and discharge the unit once every 3 months.

SAFETY PRECAUTIONS

For safe operation and optimal performance, the Medicharge Flex must be operated correctly. Please carefully read, understand, and follow all instructions and guidelines in this user guide. Failure to follow these instructions may result in damage to the unit, property, death, or serious injury.

Disclaimer: While iTechworld has taken every precaution to ensure the accuracy of the contents of this user guide, iTechworld assumes no responsibility for any errors or omissions.

Furthermore, all specifications and functionality may change at any time without notice.

It is best to view our website for the most up-to date information.

WARNING:

People with physical disabilities, visual, sensory, or mental impairments (including children) should not use this device. Children should be supervised to ensure they do not play with the CPAP Battery.

WARNING:

Do not disassemble or modify the CPAP Battery; doing so will result in your warranty being void, it may result in a risk of electrical shock, fire, death, or serious injury.

EXPLOSION HAZARD:

Do not use the CPAP Battery in an environment where flammable fumes or gases are present (such as gas bottles, petrol engines, or lead-acid battery compartments).

WARNING:

Avoid using the CPAP Battery in extreme temperatures, high humidity, direct sunlight, and near fire.

WARNING:

Please use the cables recommended in this user guide; otherwise, it may result in damage to the CPAP Battery, a risk of electrical shock, fire, death, or serious injury.

WARNING:

Do not drop the CPAP Battery.

WARNING:

When not using the CPAP Battery, turn off the power and unplug the power cord.

WARNING:

Do not use the CPAP Battery and its accessories to connect equipment if there is a defect.

WARNING:

Do not use the CPAP Battery in an environment where it will get wet, the unit is not waterproof.

LIMITATIONS OF USE:

This unit is not designed to be a primary life support power source. Do not rely on this unit as the sole power source for critical medical devices where loss of power could result in harm. While the Medicharge Flex is compatible with CPAP machines and other sensitive electronics, users should have an alternative power source available in case of malfunction.

LONG TERM STORAGE:

For long-term storage, discharge the power from full to empty once every three months, and then recharge it to at least 75%. Ensure the power is turned off completely.



POWERED BY
iTECHWORLD
THE POWER EXPERT

CONTACT US



1300 483 249



service@itechworld.com.au



www.itechworld.com.au



When it comes to energy storage and creation at iTechworld, we take pride in being one of the biggest names in the industry. Based in Australia, we are a family-owned and operated business. With many more innovative products on the horizon we are committed to constantly raising the bar to provide bigger and better benefits to all our customers Australia-wide.

Whether you're an avid camper, 4WD enthusiast, freedom seeker or camper, we've got your power needs covered. Escape the grid without compromise, minimise your downtime and travel with comfort with our large range of leading products at great prices.

iTechworld. The Power Expert.

LOVE YOUR MEDICHARGE FLEX? **LEAVE A REVIEW**

