

BLUETOOTH® HANDSFREELINK®

How to operate the vehicle's hands-free calling system.

Basic HFL Operation

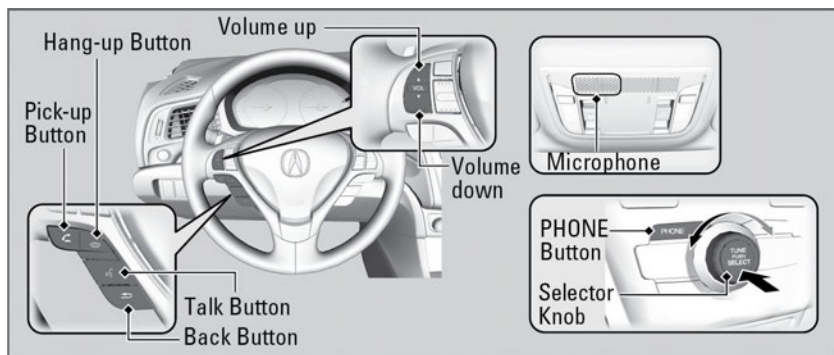
Make and receive phone calls using the vehicle's audio system, without handling your phone. Visit handsfreelink.com to check phone compatibility. Canada clients can phone (855) 490-7351 for any HandsFreeLink® related inquiry.

To reduce the potential for driver distraction, certain manual functions may be inoperable or grayed out while the vehicle is moving. Voice commands are always available.

■ HFL Displays and Controls

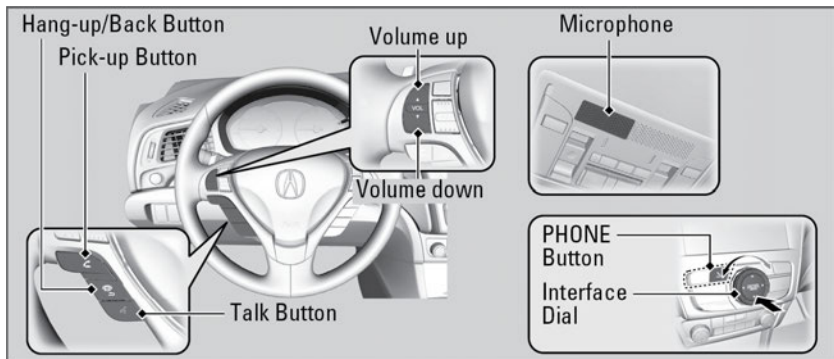
Use the controls to enter information and make selections.

Models with one display



- | | |
|-----------------------------|---|
| Pick-up button: | Press to go directly to the Phone screen or to answer an incoming call. |
| Hang-up/back button: | Press to end a call. |
| Talk button: | Press to call a number with a stored voice tag. |
| Back button: | Press to cancel a command. |
| PHONE button: | Press to go directly to the Phone screen. |
| Selector knob: | Rotate to select an item on the screen, then press it. |

Models with two displays



Pick-up button: Press to go directly to the phone menu screen, to dial a call, or to answer an incoming call. Press and hold to redial the last number dialed in the phone's history.

Hang-up/back button: Press to end a call, or to cancel a command.

Talk button: Press to give HFL voice commands.

PHONE button: Press to go directly to the Phone screen.

Interface dial (ENTER/MENU button): Rotate to select an item on the screen, then press it. Move left, right, up or down to select secondary menu.

■ Talk Button Tips

When using the Talk button, wait for the beep before saying a command. The system recognizes commands listed in the Voice Command Index.

- Aim the vents away from the ceiling and close the windows, as noise coming from them may interfere with the microphone.
- Press and release the talk button when you want to call a number. Speak clearly and naturally after a beep. If the microphone picks up voices other than yours, the command may be misinterpreted.
- To change the volume level, use the audio system's volume knob or the remote audio controls on the steering wheel.

Pairing a Phone

To use hands-free phone and streaming audio functions, you must first pair your phone to the system. This can only be done when the vehicle is stopped. If there is an active connection to Apple CarPlay® (see Apple CarPlay) or Android Auto™ (see Android Auto), pairing of additional Bluetooth-compatible devices is unavailable and Add Bluetooth Device is grayed out from the Bluetooth Device List screen.

■ Pairing the First Phone

Models with One Display

1. Press the PHONE button.
2. Select Yes.
3. Make sure your phone is in discoverable mode, then press the selector knob.
HFL automatically searches for a *Bluetooth*® device.
4. Select your phone from the list.
If your phone doesn't appear, select Phone Not Found? and search for *Bluetooth*® devices using your phone. From your phone, select HandsFreeLink.
5. HFL gives you a four-digit pairing code to input on your phone.
When your phone prompts you, input the four-digit pairing code.
6. A notification appears on the screen if pairing is successful.



Models with Two Displays

1. Press the PHONE button.
2. Select Yes.
3. Make sure your phone is search or discoverable mode, then press the interface dial.

HFL automatically searches for a *Bluetooth®* device.

4. When your phone appears on the list, select it.

If your phone does not appear, you can select Options... and Refresh to search again.

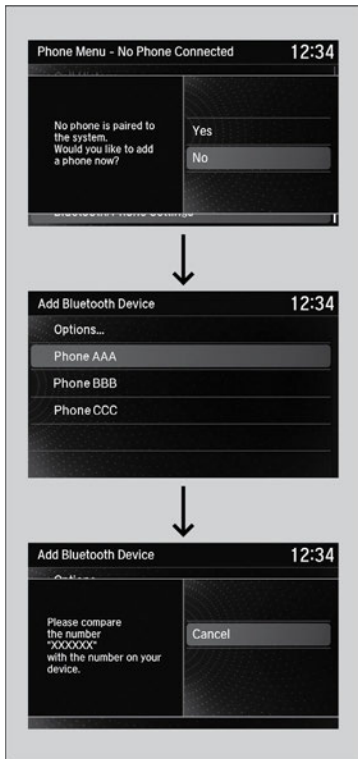
If your phone still does not appear, select Options... to select Device Not Found? and search for *Bluetooth®* devices using your phone. From your phone, select HandsFreeLink.

5. HFL gives you a pairing code on the information screen.

Confirm if the pairing code on the screen and your phone match.

This may vary by phone.

6. A notification appears on the screen if pairing is successful.



■ Pairing an Additional Phone

Models with One Display

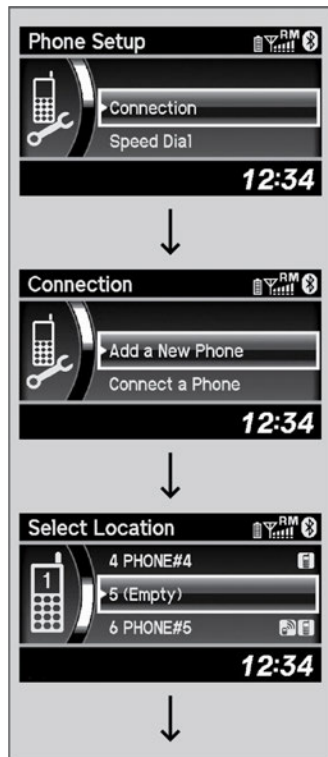
1. Press the PHONE button.

If a prompt appears asking to connect to a phone, select No and proceed with step 2.

2. Select Phone Setup.
3. Select Connection.
4. Select Add a New Phone.

The screen changes to Select Location.

5. Select Empty.



6. Make sure your phone is in discoverable mode, then press the selector knob.

HFL automatically searches for a *Bluetooth®* device.

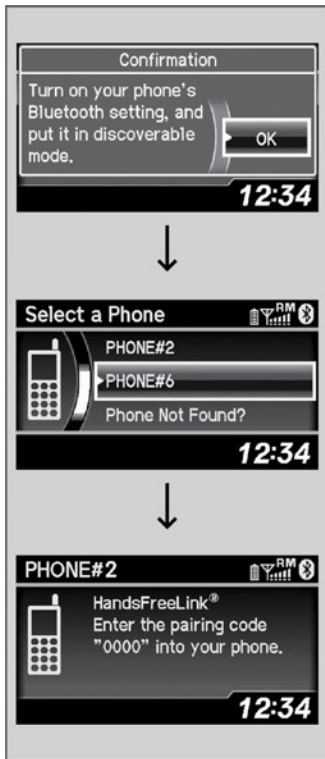
7. When your phone appears on the list, select it.

If your phone doesn't appear, select Phone Not Found? and search for *Bluetooth®* devices using your phone. From your phone, select HandsFreeLink®.

8. HFL gives you a four-digit pairing code to input on your phone.

When your phone prompts you, input the four-digit pairing code.

9. A notification appears on the screen if pairing is successful.



Models with Two Displays

1. Press the SETTINGS button.
2. Select *Bluetooth*®/Phone Settings.

Repeat the procedure to select *Bluetooth*® Device List, then Add *Bluetooth*® Device.

3. Make sure your phone is search or discoverable mode, then press the interface dial.

HFL automatically searches for a *Bluetooth*® device.

4. When your phone appears on the list, select it.

If your phone does not appear, you can select Options... and Refresh to search again.

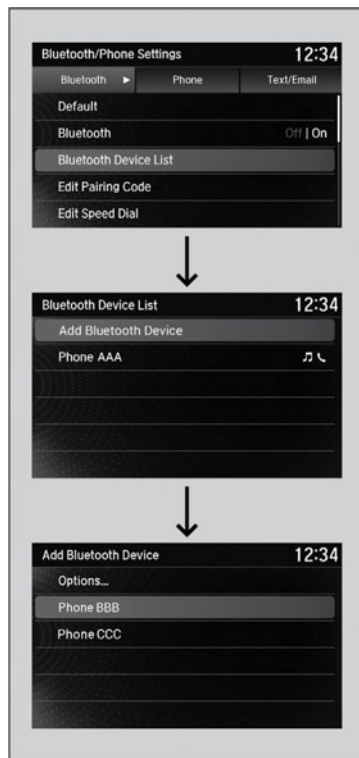
If your phone still does not appear, select Options... to select Device Not Found? and search for *Bluetooth*® devices using your phone. From your phone, select HandsFreeLink®.

5. HFL gives you a pairing code on the information screen.

Confirm if the pairing code on the screen and your phone match.

This may vary by phone.

6. A notification appears on the screen if pairing is successful.



Making a Call

You can make calls by inputting any phone number, or by using the imported phonebook, call history, speed dial entries, or redial.

■ Dialing a Number

Models with One Display

1. Press the PHONE button.
2. Select Dial.
3. Select each digit of the phone number.
4. Select the Phone button to start dialing.



Models with Two Displays

1. Press the PHONE button.
2. Select Dial.
3. Select a number.
Use the keypad on the On Demand Multi-Use Display™ to enter a phone number.
4. Select the Phone button to start dialing.

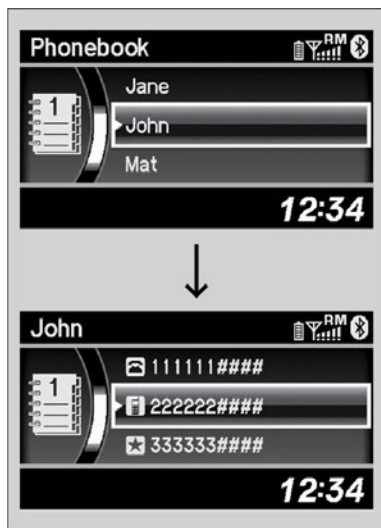


■ Using the Phonebook

Models with One Display

When your phone is paired, the contents of its phonebook are automatically imported to HFL.

1. Press the PHONE button.
2. Select Phonebook.
3. The phonebook is stored alphabetically. Select the initial, then press the selector knob.
4. Select a name.
5. Select a number to start dialing.



Models with Two Displays

1. Press the PHONE button.
2. Select Phonebook.
3. Select a contact name.
4. Select a number to start dialing.



■ Storing Speed Dial Entries

Models with One Display

Up to 15 speed dial numbers can be stored per phone.

To store a speed dial number:

1. Press the PHONE button.
2. Select Phone Setup.
Select Speed Dial, then Add New.
3. Select how you will add a new entry:

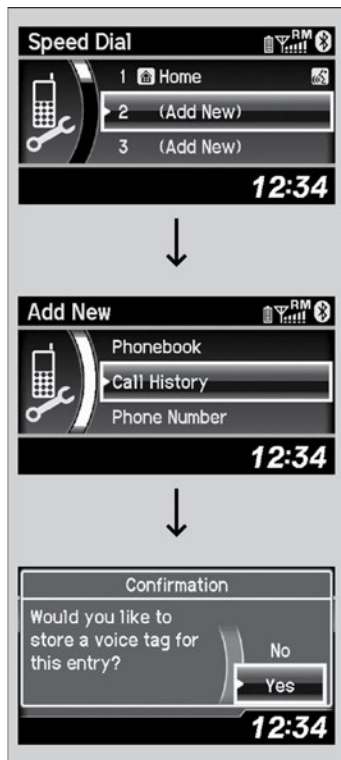
By Phonebook: Select a number from the linked cell phone's imported phonebook.

By Call History: Select a number from the call history.

By Phone Number: Input the number manually.

4. When the speed dial entry is successfully stored, you are asked to create a voice tag for the number.
Select Yes or No.

If you select Yes, press the Talk button, then follow the prompts to say the name for the speed dial entry.



Models with Two Displays

Up to 20 speed dial numbers can be stored per phone.

To store a speed dial number:

1. Press the PHONE button.
2. Select Speed Dial.
3. Select how you will add the new entry:

From **Manual Input**: Input the number manually.

From **Import from Phonebook**: Select a number from the linked cell phone's imported phonebook.

From **Import from Call History**: Select a number from the call history.

4. When the speed dial entry is successfully stored from Import from Call History or Import from Phonebook, you are asked to create a voice tag for the number. Select Yes or No.

If you select Yes, press the Talk button, then follow the prompts to store a voice tag for the speed dial entry.

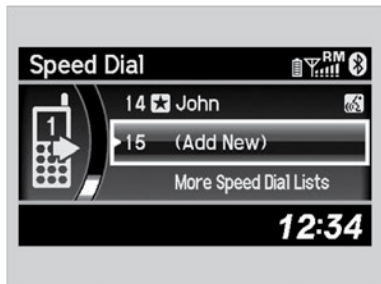


■ Using Speed Dial

Make calls quickly using stored speed dial entries.

Models with One Display

1. Press the PHONE button.
 2. Select Speed Dial.
 3. Select a number.
- Dialing starts automatically.



Models with Two Displays

1. Press the PHONE button.
 2. Select Speed Dial.
 3. Select a number.
- Dialing starts automatically.

