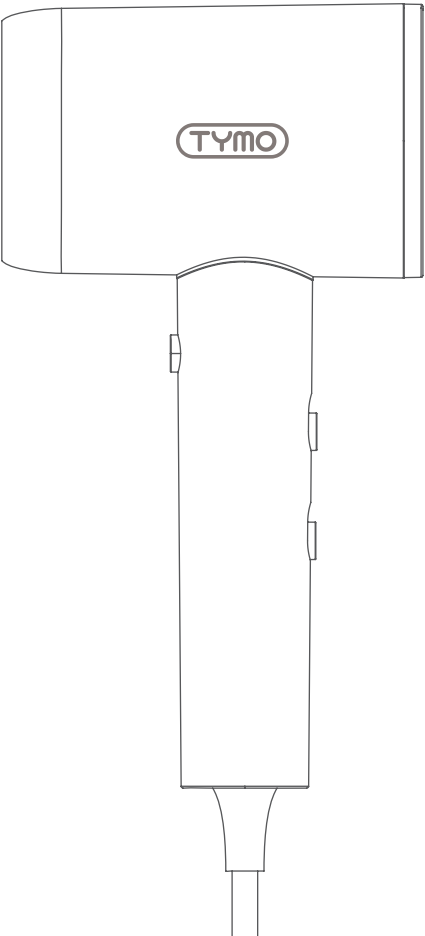




AIRBLISS
3 IN 1 HAIR DRYER

USER MANUAL

✉ csteam@tymo-tech.com



Thank you for choosing TYMO AIRBLISS 3 in 1 Hair Dryer. Please read this user manual carefully before you start.

IMPORTANT SAFETY INSTRUCTIONS

When using electrical appliances, especially when children are present, basic safety precautions should always be followed, including the following:

READ ALL INSTRUCTIONS BEFORE USING KEEP AWAY FROM WATER

DANGER -As with most electrical appliances, electrical parts are electrically live even when the switch is off.

To reduce the risk of death by electric shock:

1. Always "unplug it" immediately after using.
2. Do not use while bathing.
3. Do not place or store appliance where it can fall or be pulled into a tub or sink.
4. Do not place in or drop into water or other liquid.
5. If an appliance falls into water, "unplug it" immediately. Do not reach into the water.

WARNING -To reduce the risk of burns, electrocution, fire, or injury to persons:

1. An appliance should never be left unattended when plugged in.
2. Close supervision is necessary when this appliance is used by, on, or near children or individuals with certain disabilities.
3. Use this appliance only for its intended use as described in this manual. Do not use attachments not recommended by the manufacturer.
4. Never operate this appliance if it has a damaged cord or plug, if it is not working properly, or if it has been dropped, damaged, or dropped into water. Return the appliance to a service center for examination and repair.
5. Keep the cord away from heated surfaces. Do not wrap the cord around the appliance.
6. Never block the air openings of the appliance or place it on a soft surface, such as a bed or couch, where the air openings may be blocked. Keep the air openings free of lint, hair, and the like.
7. Never use while sleeping.
8. Never drop or insert any object into any opening or hose.

9. Do not use outdoors or operate where aerosol (spray) products are being used or where oxygen is being administered.
10. Do not use an extension cord with this appliance.
11. Do not direct hot air toward eyes or other heat sensitive areas.
12. Attachments may be hot during use. Allow them to cool before handling.
13. Do not place appliance on any surface while it is operating.
14. While using the appliance, keep your hair away from the air inlets.
15. Do not operate with a voltage converter.

SAVE THESE INSTRUCTIONS

This appliance has a polarized plug (one blade is wider than the other). As a safety feature, this plug will fit in a polarized outlet only one way. If the plug does not fit fully in the outlet, reverse the plug. If it still does not fit, contact a qualified electrician. Do not attempt to defeat this safety feature.

This appliance is not intended for use by persons (including children) with reduced physical, sensory or mental capabilities, or lack of experience and knowledge, unless they have been given supervision or instruction concerning use of the appliance by a person responsible for their safety.

Children should be supervised to ensure that they do not play with the appliance.

If the SUPPLY CORD is damaged, it must be replaced by the manufacturer, its service agent or similarly qualified persons in order to avoid a hazard.

CAUTION: In order to avoid a hazard due to inadvertent resetting of the THERMAL CUT-OUT, this appliance must not be supplied through an external switching device, such as a timer, or connected to a circuit that is regularly switched on and off by the utility.

WARNING: Do not use this appliance near bathtubs, showers, basins or other vessels containing water.



-when the appliance is used in a bathroom, unplug it after use since the proximity of water presents a hazard even when the appliance is switched off.

-for additional protection, the installation of a residual current device (RCD) having a rated residual operating current not exceeding 30 mA is advisable in the electrical circuit supplying the bathroom. Ask your installer for advice.

⚠ WARNING

THESE WARNINGS APPLY TO THE APPLIANCE, AND ALSO WHERE APPLICABLE TO ALL TOOLS, ACCESSORIES, CHARGERS OR MAINS ADAPTORS. TO REDUCE THE RISK OF FIRE, ELECTRIC SHOCK, OR INJURY:

1. This appliance can be used by children aged from 8 years and above and persons with reduced physical, sensory or reasoning capabilities, or lack of experience and knowledge, only if they have been given supervision or instruction by a responsible person concerning use of the appliance in a safe way and understand the hazards involved. Cleaning and user maintenance shall not be made by children without supervision.
2. Do not allow to be used as a toy. Close attention is necessary when used by or near children.
3. If the supply cable is damaged, it must be replaced or repaired by the manufacturer, its service agent or similarly qualified persons in order to avoid a hazard.
4. This appliance has a non-self resetting thermal cut out safety device to prevent overheating. If your appliance cuts out, unplug it from the mains supply socket and leave to cool.
5. Do not place near flammable materials in use and avoid covering flammable clothing or items. After use, do not set on flammable surfaces like clothing or mattresses until cooled. Always disconnect the power when not in use.
6. Do not handle any port of the plug or appliance with wet hands.
7. Do not unplug by pulling on the cable. To unplug, grasp the plug, not the cable. The use of an extension cable is not recommended.
8. Do not stretch the cable or place the cable under strain. Keep the cable away from heated surfaces and do not wrap the cable around the appliance.
9. Do not use any lubricants, cleaning agents, polishes or air fresheners on any part of the appliance.
10. Contact the TYMO Customer Services Team when a service or repair is required. Do not disassemble the appliance as incorrect reassembly may result in an electric shock or fire.
11. If the appliance is not working as it should, if it has received a sharp blow, if it has been dropped, damaged, left outdoors, or dropped into water, do not use and contact the TYMO Customer Services Team.
12. When the appliance has been unpacked, check it if it has transport damage and ensure that all parts have been delivered. If parts are missing or the appliance has been damaged, please email the TYMO Customer Services Team.
13. If the appliance does not work, or is not working properly, please email the TYMO Customer Services Team. DO NOT attempt to repair the appliance. Repair work by the unqualified persons can cause serious risk to the user and will void the warranty.

14. ~ The symbol indicates Ac voltage.

15. □ The symbol indicates Class II equipment.



RECYCLING

This product bears the selective electrical and electronic equipment (WEEE). This means that this product must be handled pursuant to European directive 2012/19/EU to be recycled or dismantled to minimize its impact on the environment. User has the choice to give his product to a competent recycling organization or to the retailer when he buys a new electrical or electronic equipment.

This product can be used across EU member states.



PROFESSIONAL HAIR STYLER



tymobeauty.com



Instagram



TikTok

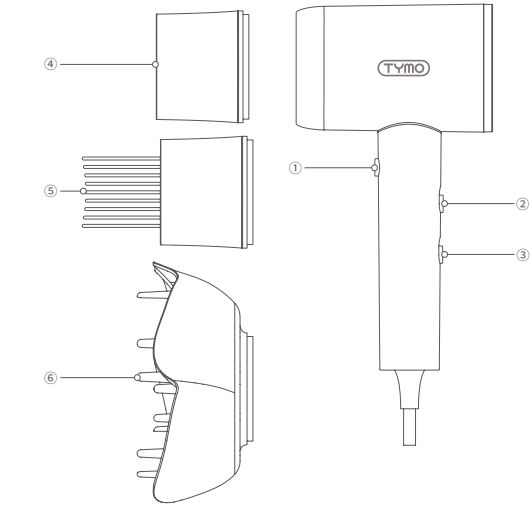
SPECIFICATIONS

Product Description: 3 in 1 Hair Dryer
Model No.: HC605/HC605G/HC605W/HC605P/HC605B/HC605N
Power supply (us): 125V- 60Hz
Rated Power: 1600W

PACKAGING LIST

| Packaging List | Quantity |
|---------------------|----------|
| 3 in 1 Hair Dryer | 1 |
| Concentrator Nozzle | 1 |
| Comb Nozzle | 1 |
| Diffuser Nozzle | 1 |

PRODUCT OVERVIEW



- ① One-Key Cool Air Mode Button
② Temperature mode Button
③ Switch/Wind Speed Mode Button
- ④ Concentrator Nozzle
⑤ Comb Nozzle
⑥ Diffuser Nozzle

HOW TO USE

- 1. Turn On:** Connect the power supply and slide the Switch/Wind Speed Mode Button to the first position to turn on the device.
- 2. Wind Speed Adjustment:** Continue sliding the Switch/Wind Speed Mode Button to adjust the wind speed as needed. From bottom to top, the settings are: Turn Off – Gentle Wind – Fast Wind.
- 3.Wind Temperature Adjustment:** Slide the Wind Temperature Mode Button to adjust the wind temperature. From bottom to top, the settings are: cool air - warm air - hot air.
- 4. One-Key Cool Air Mode:** Press and hold the One-Key Cool Air Mode Button to activate the "One-Key Cool Air" mode. The wind temperature will switch to Cool air. Release the button to return to the previous temperature setting.
- 5. Turn Off:** Slide the Switch/Wind Speed Mode Button to the bottom position, and the hair dryer will turn off.
- 6. Storage:** Disconnect the power, and then store the hair dryer.

Tips: When the internal temperature of the hair dryer becomes too high, it will stop working. In this case, please switch the Switch/ Wind Speed Mode Button to the OFF position and wait for the device to cool down before turning it back on.

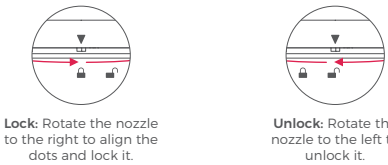
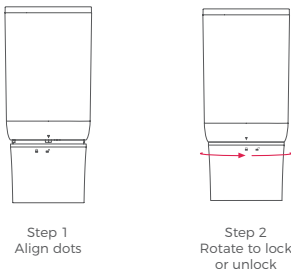
Wind Speed



Temperature



How to Use the Air Nozzle



NOTE

- Maximum operating temperature in normal working conditions: up to 210°F (100°C) .
- Maximum thermistor temperature at safety shut down: 300°F (150°C) .

Lightweight and Comfortable Design

Weighing only 350 grams, this ultra-lightweight hairdryer features an ergonomic grip for more flexible and comfortable usage.

High-Performance Output

Combined with a high-efficiency motor and advanced aerodynamic design, it delivers a powerful airflow of 25M/S, significantly enhancing drying efficiency.

Multiple Styling Nozzles

Includes several detachable nozzles (Concentrator Nozzle, Diffuser Nozzle, Comb Nozzle) to easily meet various styling needs.

200 Million Negative Ions

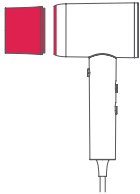
Releases 200 million negative ions to reduce hair frizz and care for hair health.

6 Drying Modes

3 temperature settings and 2 speed settings to meet different hair drying needs.

WARNING

The air exit and attachments may be hot during use.



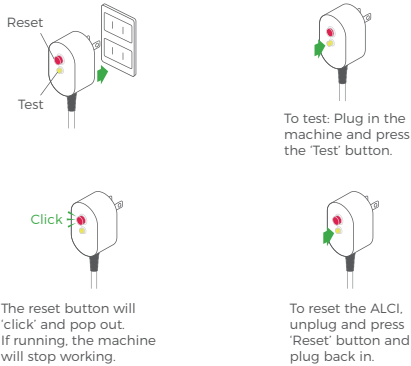
WARNING

THE APPLIANCE, NOZZLE CONTAIN MACNETS

Please keep away from pacemakers, defibrillators, credit cards and electronic storage media.

ALCI Safety (u.s. only)

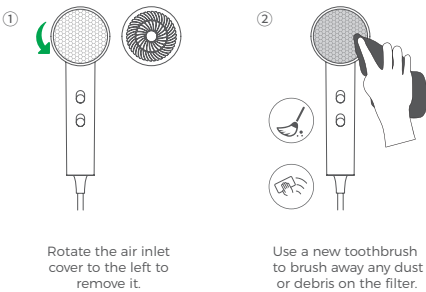
Ensure you check the ALCI safety feature every time you use your machine. The purpose of this test is to make sure the safety device is working.



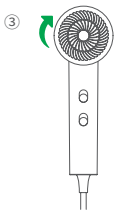
HOW TO CLEAN

To ensure optimal performance and maintenance of the Hair Dryer, it is recommended to regularly clean the air intake.

Cleaning methods: Manual Cleaning
Turn off the device and unplug it from power supply before cleaning.



Do not use water to clean the filter. Do not apply too much pressure to the filter mesh.



After cleaning, rotate the air inlet cover to the right until you hear a click.

SAFETY MAINTENANCE

1. Do not touch the heated surface without using the heat proof glove.
2. Never operate this appliance if there is any damage to the cable or plug.
3. Always unplug the device immediately and store in a safe, dry location after use.
4. The appliance is non-waterproof, please do not use it in a humid environment.
5. Do not leave the appliance alone when it is working please keep away from children.
6. This appliance should not be used by children and individuals with certain disabilities or lack of experience and knowledge. unless they have been given supervision or instruction concerning use of the appliance by a person responsible for their safety.

FCC STATEMENT

This device complies with Part 15 of the FCC Rule. Operation is subject to the following two conditions:

- 1.This device may not cause harmful interference.
2. This device must accept any interference received, including interference that may cause undesired operation.

WARNING

Changes or modifications to this unit not expressly approved by the party responsible for compliance could avoid the user's authority to operate the equipment.

NOTE:

This equipment has been tested and found to comply with the limits for a Class B digital device, protection against harmful interference in a residential installation.

This equipment generates, uses and can radiate radio frequency energy and, if not installed communications.

However, there is no guarantee that interference will not occur in a particular installation. If this that interference will equipment does cause harmful interference to radio or television reception, which can be determined by turning the equipment off and on, the user is encouraged to try to correct the interference by one or more of the following measures:

- Reorient or relocate the receiving antenna.
- Increase the separation between the equipment and receiver.
- Connect the equipment into an outlet on a circuit different from that to which the receiver is connected.
- Consult the dealer or an experienced radio/TV technician for help.

WARRANTY

The product warranty is governed by regulations in force and applied upon showing the original legible purchase receipt complete of all its parts. For support service under warranty, please take the original purchase receipt to the store where the product was purchased.

TROUBLE SHOOTING

The above is only a description of some potential faults. If you cannot resolve any issue effectively, please contact customer service at csteam@tymo-tech.com.

Membership Registration
- Go Online NOW!



SCAN TO JOIN