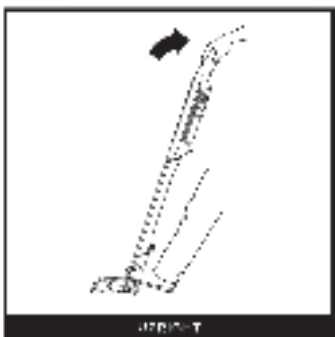
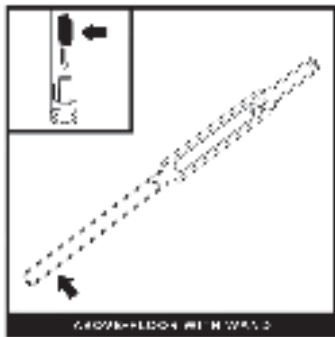


CLEANING MODES



Use the Power Fin Floor Nozzle for powerful cleaning on both hard floors and carpets. The brushroll is active, while the hand vacuum is activated and powered on, and the hand is at the heel.



Use the **Power Fin Groove Floor Nozzle** for cleaning the groove of the floor. The brushroll is active, while the hand vacuum is activated and powered on, and the hand is at the heel.



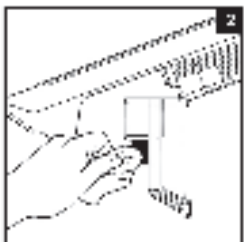
Detach the hand vacuum from the above-floor nozzle. All the release buttons on both sides of the handle, and the hand vacuum of the wand. To activate the above-floor vacuum, click into the opening in the handle. To remove, press the release buttons on both sides of the handle and click out the wand.

NOTE: Do not use the vacuum cleaner with water or other liquid.

EMPTYING THE DUST CUP



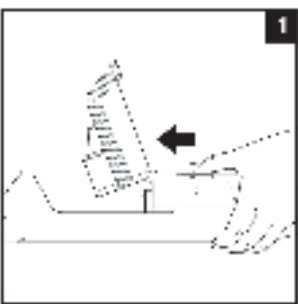
1. With the power off, press the release button forward and the dust cup will swing open. Push the release button to close the dust cup and debris.



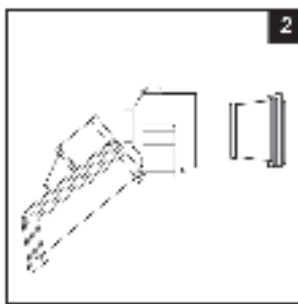
2. Wipe the dust cup with a dry cloth. Wipe the dust cup with a dry cloth to remove dust and dirt.

NOTE: Do not touch any parts or accessories in a dishwasher.

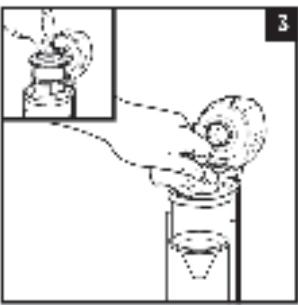
CLEANING THE DUST CUP AND FILTER



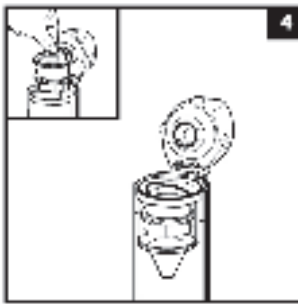
1. With the dust cup open and the power off, press the release button forward and the dust cup will swing open. Push the release button to close the dust cup and debris.



2. Press the dust cup on both sides of the handle and pull out the filter. To clean the filter, use a brush to clean the filter. Do not use water to clean the filter. To reset the filter, click back into the filter housing and press into place.

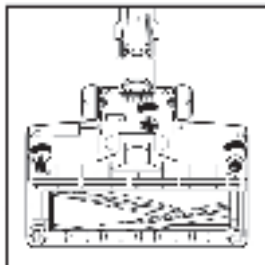


3. To deep clean the cup, first remove the **avanti c Dycup**. Lift it out by the handle on the frame. Rinse the dust cup with water, and wipe it clean with a damp cloth. Allow it to air-dry for 24 hours.

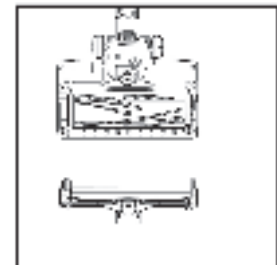


4. With the dust cup completely dry, slide the **avanti c Dycup** back into place. Push the **avanti c Dycup** into place.

NOZZLE MAINTENANCE



1. Turn off the vacuum.
2. Press the release button to detach the nozzle from the wand.
3. Using a cloth, turn the **avanti c Dycup** counter-clockwise to open, turn off the vacuum and remove the nozzle from the wand.



4. Clean any debris and remove any debris from the brushroll and floor nozzle.
5. With the cover removed, wipe the brushroll clean with a dry cloth.
6. Turn the cover back to the bottom of the **avanti c Dycup**. Press down firmly until you hear a click. Turn the cover clockwise to close, until the click is heard.

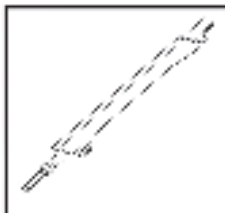
CHECKING FOR BLOCKAGES

If you are not getting enough suction or the vacuum is not working properly, check for blockages in the brushroll.



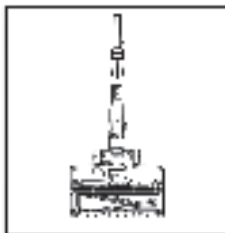
Checking for Blockages in the Hand Vacuum:

1. Turn off the vacuum.
2. Remove the hand vacuum from the wand.
3. Check all intake openings to the hand vacuum and remove any debris or blockages.



Checking for Blockages in the Wand:

1. Turn off the vacuum.
2. Detach the hand vacuum and floor nozzle from the wand.
3. Check the interior of the wand for blockages and debris.
4. Clear away any debris and blockages.



Checking for Blockages in the Floor Nozzle:

1. Turn off the vacuum.
2. Detach the wand.
3. Using a cloth, turn the **avanti c Dycup** counter-clockwise to open.
4. Push the **avanti c Dycup** back into place.
5. Check the opening and remove any debris.
6. Replace the **avanti c Dycup** by sliding it into the slot. Press down firmly until you hear a click. Turn the **avanti c Dycup** clockwise to close.

TROUBLESHOOTING

WARNING: To reduce the risk of shock and unintended operation, turn off power and remove the battery before servicing.

Vacuum is not picking up debris. No suction or light suction. Third indicator light on hand vacuum is solid yellow.

(Refer to Checking for Blockages section for more information.)

1. Dust cup may be full, empty dust cup.
2. Check for clogs in the intake opening and remove any debris.
3. Remove any string, carpet fibers, or other debris that may be wrapped around the brushroll.
4. Check connection between hand vacuum and wand for blockages. Clean blockages if necessary.
5. Check filter to see if they were cleaned. Follow instructions for cleaning and care when you are cleaning the filter to ensure proper cleaning.

Vacuum lifts area rugs.

1. Make sure you are using the correct mode. Make sure when vacuuming area rugs or rugs with delicate coverings.
2. Turn off the brushroll coverage and the carpet, then restart.

My vacuum has a PowerFin nozzle but the brushroll doesn't spin.

1. Immediately turn off the vacuum. Remove any blockages before using the vacuum back on. Make sure the wand is locked into the back for coverage for the brushroll to engage while in use.
2. If the indicator light is flashing and they are not illuminated, there is a connection issue between the hand vacuum and the wand. Try disconnecting the parts to the vacuuming unit.

Vacuum turns off on its own.

There are several possible reasons for the vacuum turning off on its own, including blockages, battery issues, and overheating. Follow the maintenance below, parts may be replaced if necessary.

1. Turn on the vacuum and check the battery indicator light on the hand vacuum. Recharge the battery, and ensure vacuum is not off before recharging the battery.
2. Empty the dust cup and clean the filter. (See the Cleaning the Dust Cup and Filter section.)
3. Check wand, hose, and floor nozzle openings and remove any blockages.
4. Allow a full 4-hour battery rest for at least 48 hours after a full charge to return to normal temperature.
5. Press the **On/Off** button to restart the vacuum.

Battery Indicator Lights on hand vacuum are flashing.

• Bottom LED is solid yellow (Fig. 4A). No debris cup. (See the Maintenance for Vacuum section.)

• Top LED is flashing (Fig. 4B). Battery needs to be recharged.

Contact a Service Center if you experience any of the problems listed below.

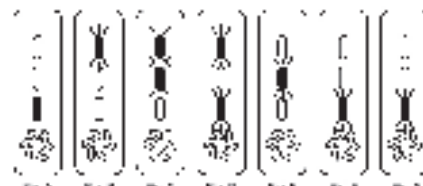
• Top two LED's are flashing (Fig. 4C). Overcurrent circuit.

• Top and bottom LED's are flashing (Fig. 4D). Motor is overheating.

• Middle LED is flashing (Fig. 4E). Over speed.

• Bottom LED is flashing (Fig. 4F). Communication.

• Bottom LED is solid yellow (Fig. 6A). There may be an issue with the problem with the motor.



NOTE: Vacuum will turn off on its own if the battery is not fully charged.

PLEASE READ CAREFULLY AND KEEP FOR FUTURE REFERENCE.

ShinNinja Operating LLC

Illustrations may differ from actual products. We are constantly striving to improve our products; therefore the specifications contained herein are subject to change without notice.

© ShinNinja LLC. All rights reserved. All other trademarks are the property of their respective owners.



804106594



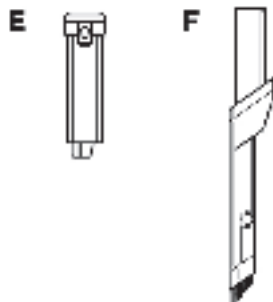
PRINTED IN MEXICO / SC: 19-10-2021
OBPN: WS630Series_IB_E_REV_MV9_201214
SHNMDL:WS630_B / TAB/ Elbrd:J.E.

Please make sure to read the enclosed Shark® Owner's Guide prior to using your vacuum.

Shark® WANDVAC™ SYSTEM QUICK START GUIDE

WHAT'S INSIDE:

- A** Hand Vacuum
- B** Wand
- C** PowerFins Floor Nozzle
- D** WANDVAC™ System Docking Station
- E** Battery Pack
- F** Duster Crevice Tool



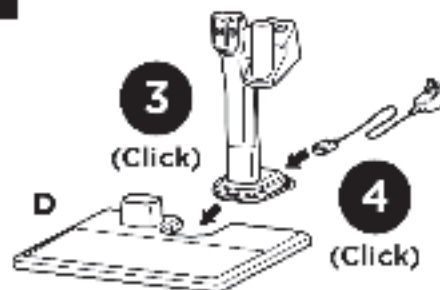
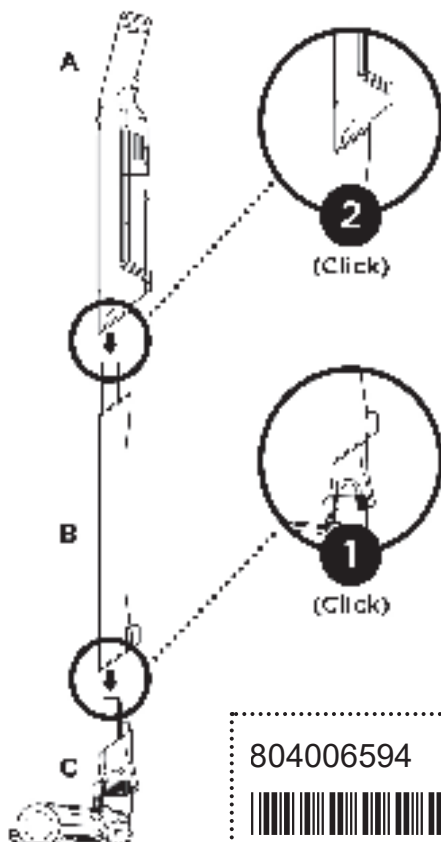
The images may vary.

1. Slide the wand onto the neck of the floor nozzle until it clicks into place.
2. Slide the hand vacuum nozzle over the wand until it clicks.
3. Make sure the dock plate is facing upright. Slide the charging post into the slot on the back of the dock until it clicks into place.
4. Place the dock on the floor near a wall outlet. Plug the wall charger into the outlet, then connect the cord to the port on the back of the charging post.
5. Store cleaning accessories on the mount on the dock plate.

For proper operation, ensure all components are completely connected and clicked into place.

Note: The images shown here are for illustrative purpose only and may vary.

ASSEMBLY



The images shown here are for illustrative purpose only and may vary.

804006594



PRINTED IN MEXICO / SC:21-10-2021
Elbrd: J.E / 0.5P / SHNMDL: WS630_B
OBPN:WS630_QSG_MP_Mv3_201123