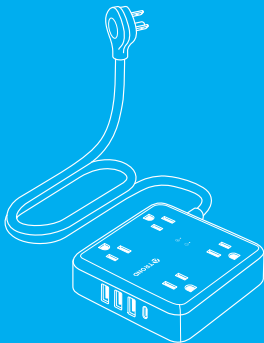




WELCOME GUIDE

Surge Protector w/ USB Charger





SAFETY PRECAUTIONS

Please read these instructions carefully and retain this welcome guide for future use. When using electrical appliances, the following safety precautions should always be observed to reduce the risk of fire, electric shock, or injury to persons:



WARNING – Intended Use

This product is intended to be used in household indoor areas only, and not intended for commercial use. Do not use it in General Patient Care Areas or Critical Patient Care Areas. Keep away from children.



WARNING – Grounding and Polarization

Plug into a standard 3-wire grounded outlet only, and do not use it with a receptacle in which the slot opening does not align with the blades.



WARNING – Daisy Chaining

This product must be plugged directly to a wall outlet, and should not be "daisy-chained" together in series with other power strips or surge protectors.



WARNING – Liquid

This product should not be used with aquariums, near water or any other source of moisture. Do not operate this product, if liquid of any kind is spilled onto or inside it.



WARNING – Heat

Do not place it near heat sources such as wall heaters. Never cover it with carpet, furniture or anything that would prevent air circulation or cause temperature increase. Shut off the unit immediately if it ever becomes hot to touch.



WARNING – Overloading

Do not overload the product's outlets. If the load exceeds 10A / 1250W (whether plugged into a single outlet or spread out over multiple outlets), the built-in circuit breaker will trip. In this case, reduce the load by unplugging some devices and reset the power switch.



WARNING – No User Serviceable Parts Inside

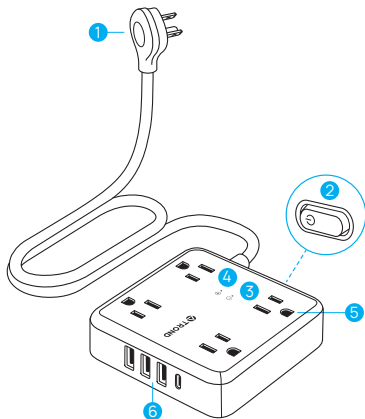
Do not open the housing for any reason, as there're no user-serviceable parts inside. Product warranty will be voided and no liability will be accepted if the product is dismantled.



WARNING – Proper Cleaning

In general, the only cleaning necessary for this product is a light dusting. Unplug it from the wall outlet before cleaning it. Do not use any type of liquid or aerosol cleaners.

Product Diagram



① Slim Power Plug (0.55" Thickness)

② Power Switch with Circuit Breaker

③ LED Power Indicator (White)




④ Surge Protection Indicator (Green)

⑤ 4 Grounded AC Outlets

⑥ USB-A Output: DC 5V = 2.4A Max
USB Total Output: DC 5V = 3.4A, 17W

USB-C Output: DC 5V = 3.0A Max
(PD Quick Charging Not Supported)

Specifications

Model	Prime Z
Material	UL94 V-0 Flame-Retardant PC+ABS
Input Voltage	AC 100-250V, 50 / 60Hz
Rated Power	1250W (125V / 10A)
Surge Energy Rating	1440 Joules
USB-A Output	DC 5V  2.4A Max
USB-C Output	DC 5V  3.0A Max
USB Total Output	DC 5V  3.4A, 17W
Dimensions	3.94 x 3.94 x 1.10 in. (L*W*H)
Net Weight	0.62 lb / 0.28 kg (5ft version) 0.83 lb / 0.38 kg (10ft version) 1.05 lb / 0.48 kg (15ft version)

Product Features

- Turns a regular wall outlet into 4 protected AC outlets, 3 USB-A ports & 1 USB-C port, and eliminates the need for multiple chargers, saving money & desktop space for you;
- Four widely-spaced AC outlets (48mm vs. 30mm distance on regular power strips) can accommodate large power adapters without blocking other adjacent outlets;
- Each USB charging port can intelligently identify your mobile device, and seeks to maximize its charging speed (USB-A: 2.4A, USB-C: 3.0A output). Power Delivery charge technology for USB-C is NOT supported;
- Unique angled flat plug (0.55" thickness) fits easily in tight space or behind furniture, and doesn't block the bottom receptacle of your duplex wall outlet;
- Rated at 1440 Joules, it can protect your computers or home/office electronics from power disturbances, such as lightning, surges and spikes;

Frequently Asked Questions

Q: Which USB port should I use to charge my device?

A: Both 3 USB-A ports and 1 USB-C port can support smart charging technology, and can charge any 5V device at full speed (USB-A: 2.4A, USB-C: 3.0A output). For those devices with different voltage requirements, please plug your power block into the AC outlets instead.

Q: Can my phone be charged up quickly?

A: This product doesn't support Quick Charge (QC2.0/3.0/4+) or Power Delivery technology. Therefore, you may experience slow charging speed for your latest devices.

Q: Why can't the USB ports charge my devices properly?

A: Please verify whether this power strip has been securely plugged into your wall outlet or whether your USB charging cable works properly. If yes, this product could become defective. In this case, please email us at support@etrond.com for the help.

Q: What shall I do when the surge protection indicator doesn't light up?

A: It means that the surge protection has been exhausted and it can no longer protect your electric devices from power disturbances. It's time to replace this unit for future protection.

Q: How do I check my device's input current and voltage?

A: Please refer to your device's user manual, original OEM charging adapter, or contact the device manufacturer to get this information.

