

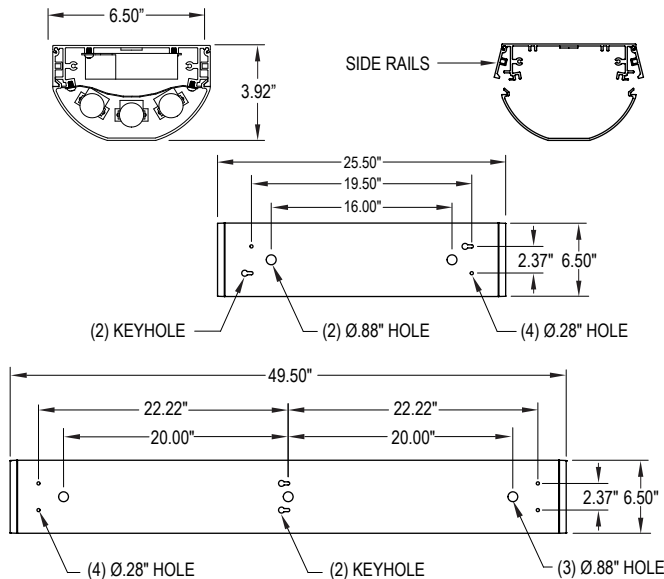
# VICTORY 2-4 N

## VR ARCHITECTURAL SERIES

LINEAR LUMINAIRE  
FLUORESCENT/LED



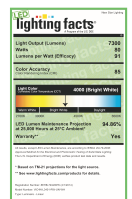
### DIMENSIONAL DATA



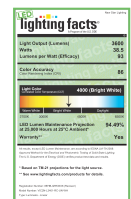
VIC4N-L3401-RC



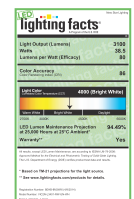
VIC4N-L3401-RW



VIC2N-L3401-RC

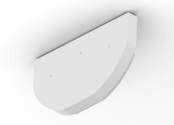


VIC2N-L3401-RW



### ORDERING INFORMATION

| Product Family   | # of Lamps   | Lamp Type  | # Ballast/Driv.   | Lens   | Voltage  |   |
|--|--|--|---|--|--|---|
| <b>VIC_</b>  |  |  |   |  |  |   |
| <b>VIC2N</b><br>6-1/2" x 25-1/2" x 3-15/16"<br><b>VIC4N</b><br>6-1/2" x 49-1/2" x 3-15/16" | <b>Fluorescent:</b><br>1 = 1 Lamp<br>2 = 2 Lamp<br>3 = 3 Lamp •<br><b>LED 2N:</b><br>L1 = LED 1Rw(12.5 W)<br>L2 = LED 2 Rw(25 W)<br>L3 = LED 3 Rw(37.5 W) •  | <b>LED 4N:</b><br>L1 = LED 1 Rw(25 W)<br>L2 = LED 2 Rw(50 W)<br>L3 = LED 3 Rw(75 W) •<br><b>LED:</b><br>35 = White 3500° K<br>40 = White 4000° K<br>50 = White 5000° K | <b>VIC2N</b><br>14 = Lin. 14W T5<br>17 = Lin. 17W T8<br>24 = Lin. 24W T5(H.O.)<br><b>LED:</b><br>35 = White 3500° K<br>40 = White 4000° K<br>50 = White 5000° K | <b>VIC4N</b><br>28 = Lin. 28W T5<br>32 = Lin. 32W T8<br>54 = Lin. 54W T5(H.O.)<br>Other color temperatures available, please consult factory | <b>Fluorescent:</b><br>1 = Ballast<br>2 = Ballast<br><b>LED:</b><br>1 = Driver<br>2 = Driver | <b>RW</b> = Ribbed White Polycarbonate<br><b>RC</b> = Ribbed Clear Polycarbonate<br>12 = 120V<br>27 = 277V<br>34 = 347V ■<br>N/A W/LED<br>UN = Universal (120V-277) |
| <b>Finish</b>  | <b>Options</b>   |  |   |  |  |   |
| <b>WH</b> = White<br><b>CC</b> = Custom Color (specify RAL number)                         | <b>PC</b> = Photocell (Flat end cap only)<br><b>TM</b> = Tandem Mount Option ■<br><b>E1</b> = Emergency Battery (standard) *<br><b>E2</b> = Emergency Battery (high) *<br><b>EML</b> = Emergency Battery LED<br><b>DM</b> = Dimming LED Driver (0-10V)<br><b>DB</b> = Dimming Ballast<br><b>PR</b> = Program Rapid Start<br><b>LN</b> = LED Night Light. Consult factory for available color/temperatures. |  |   |  |  |   |
|  | <b>FZ</b> = Fuse Holder *<br><b>OC</b> = Occupancy Sensor not available w/ LED L3-T5-T8 3 lamp / row<br><b>DE</b> = Decorative End Caps ■<br><b>TH</b> = Torx Head Screws w/cr. pin S.S<br><b>NAT</b> = Natatorium Finish<br><b>UST</b> = Unistrut Mounting Plate<br><b>CM</b> = Corner Mount  |  |   |  |  |   |



Standard (flat) End Cap



Decorative End Cap

- Advise quantity for end row mtg.
- \* Cannot use with universal voltage option
- Occupancy sensor not available with lamping
- Consult factory for lamp-ballast opt. (Fluorescent Lamp only)



|           |
|-----------|
| PROJECT:  |
| TYPE:     |
| PRODUCT:  |
| APPROVED: |
| DATE:     |

### FEATURES

The "Victory" provides a real solution to the strength vs. style issue with uncompromising durability and an aesthetically pleasing streamline look. The Victory has a unique side rail design for ease of lens removal allowing for efficient maintenance and lamp replacement.

- Architectural linear luminaire that melds aesthetics, function and vandal resistance
- Extruded aluminum narrow or wide housing with die cast end caps
- T-8/T-5/T5 HO or LED
- Many options available
- Wet location listed (for covered ceiling only)

### APPLICATION

- Public Areas
- Corridors
- Walls
- Stairways
- Schools
- Underpasses
- Public Washrooms
- Dormitories
- Factories
- Warehouses

### SPECIFICATION FEATURES

#### HOUSING:

Marine grade extruded aluminum frame with cast aluminum endcaps. Includes knockouts for surface conduit and tandem mounting.

#### DOOR:

Available with either a clear or white polycarbonate ribbed lens.

#### LENS RETENTION:

Unique swing rail design for ease of lens removal for lamp replacement and maintenance

#### ELECTRONICS:

**Fluorescent:** Electronic Ballast <10% THD standard.

#### LED:

Available in three standard color temperatures 3500°K, 4000°K & 5000°K. Other color temperatures available, consult factory.

#### LED NIGHT LIGHT:

Integrated switch allows light selection at 100%, 70%, 40% and 10% levels.

#### REFLECTOR:

Faceted 22 gauge specular aluminum for maximum rigidity and controlled light distribution.

#### GASKET:

EPDM gasketing to prevent water and dust infiltration.

#### FASTENERS:

Hardened Steel Tamper Proof Head screws (3) ea. side - (6) total.

#### FINISH:

5 stage wash and pre-treat, with a white polyester powdercoat finish.

#### LABEL:



#### Notes:

Specifications and Dimensions are subject to change without notice. For additional options and dimensional details please consult your New Star Lighting Representative. For specific electronic ballast, specify brand and catalog number. The New Star Promise will repair or replace any VR architectural fixture when installed according to New Star's instructions for the life of the original installation if the fixture should fail due to physical abuse.