

Model: CSP-A510

Inline Cabinet Fan

Standard Construction Features:

- Galvanized steel housing - Sound absorbing insulation - Outlet duct collar with integral back draft damper - Forward curved wheel - Plug type disconnect - Adjustable mounting brackets - Square duct connection - Field rotatable discharge

Selected Options & Accessories:

Motor with Thermal Overload

Motor with CSA Approval

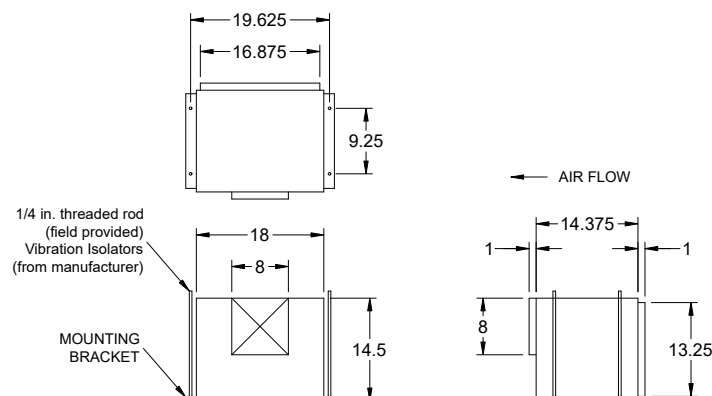
Motor with 40 Degree C Ambient Temperature

UL/cUL 507 Listed - Electric Fan

Isolation Kit, (PN: VI KIT-SP/CSP), Shipped Loose

Adjustable easy installation mounting bracket

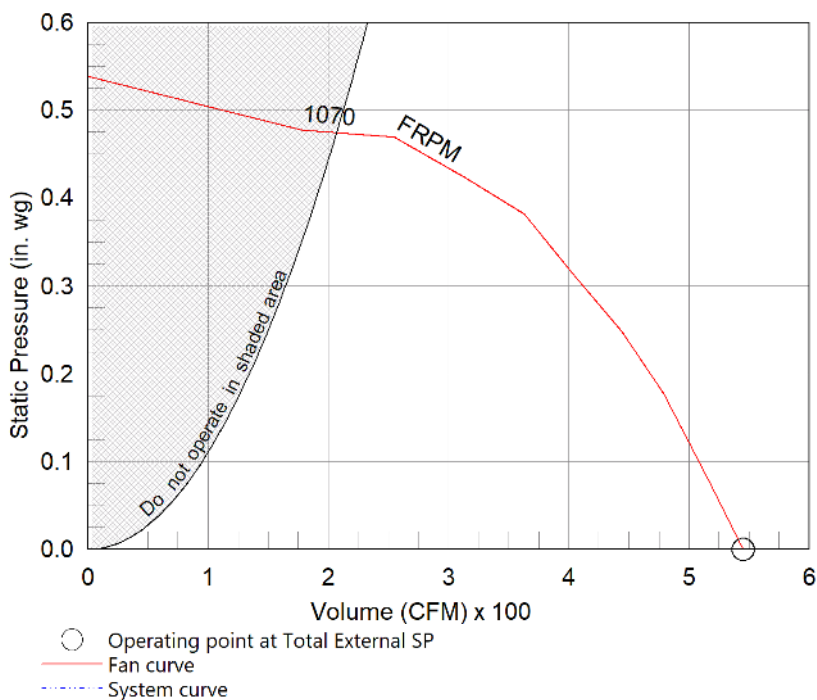
Polypropylene Wheel Material



| Dimensional | |
|-----------------------|----|
| Quantity | 4 |
| Weight w/o Acc's (lb) | 36 |
| Weight w/ Acc's (lb) | 37 |

| Performance | |
|----------------------------|-------|
| Requested Volume (CFM) | 510 |
| Actual Volume (CFM) | 545 |
| Total External SP (in. wg) | 0 |
| Fan RPM | 1070 |
| * FLA (A) | 3.3 |
| Elevation (ft) | 5,138 |
| Airstream Temp.(F) | 70 |
| Air Density (lb/ft3) | 0.062 |
| Sones | 2.5 |

| Motor | |
|---------------------|----------|
| Motor Mounted | Yes |
| ** Input Watts (W) | 181 |
| Voltage/Cycle/Phase | 115/60/1 |
| Enclosure | ODP |



Notes:

All dimensions shown are in units of in.

*FLA is approximate and will vary slightly with the motor.

Sones - calculated using AMCA 301 at 5 ft

** Wattage is approximate and may vary between motors.

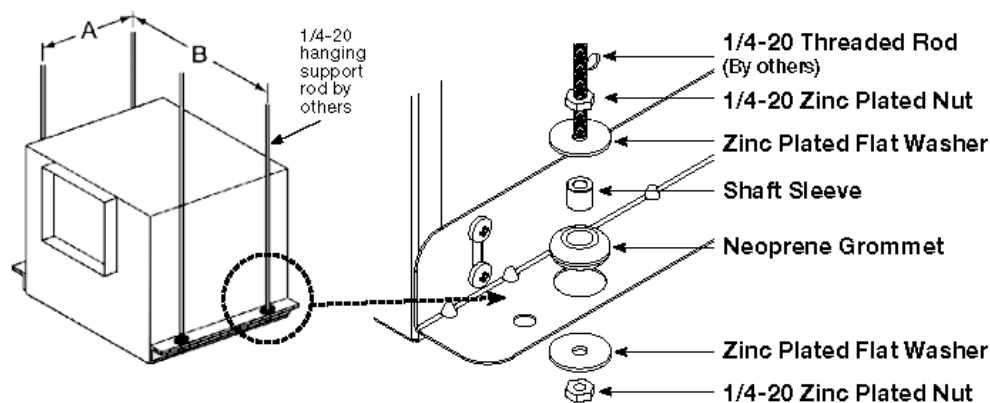


Isolation Kit

Type: Hanging

Standard Construction Features:

- Neoprene vibration isolation for hanging installation - Kit includes four isolators and all hardware necessary for mounting one unit except for the 0.25 in. x 20 in. threaded rod to be supplied by others - Fan mounting brackets include prepunched mounting holes for ease of installation



| Unit Size | A | B |
|---|-------------|---------------|
| B50-B200 | 4 1/2 (114) | 15 5/8 (397) |
| A50-A190 | 5 1/2 (140) | 14 5/8 (371) |
| A200-A390 | 6 3/4 (171) | 15 1/2 (394) |
| A410, A510, A710, A780 | 9 1/4 (235) | 19 5/8 (498) |
| A700 | 5 1/2 (140) | 25 1/8 (638) |
| A900 - A1050, A1410 - A1550 | 9 1/4 (235) | 25 3/8 (645) |
| A1750, A2150 | 9 1/4 (235) | 36 3/4 (933) |
| A3600 | 9 1/4 (235) | 48 5/8 (1235) |
| All dimensions shown in inches (millimeters). | | |

| Description | Qty |
|--------------------------|-----|
| Neoprene Grommets | 4 |
| 1 x 32 Zinc Plated Nuts | 8 |
| Zinc Plated Flat Washers | 8 |
| 3/8 x 3/16 Shaft Sleeves | 4 |