



## SERVICE PARTS LIST

BULLETIN NO.  
**54-05-2480**

SPECIFY CATALOG NO. AND SERIAL NO. WHEN ORDERING PARTS

REVISED BULLETIN

DATE

Sept 2021

### M18™ INFLATOR

CATALOG NO. **2848-20**

STARTING  
SERIAL NO.

**M26A**

WIRING INSTRUCTION

**See pages 2 and 3**

**EXAMPLE:**  
Component Parts (Small #) Are Included  
When Ordering The Assembly (Large #).

#### FIG. 70,71 NOTES

A clean, dry surface is essential for proper performance for any adhesive system. The area intended for application of any adhesive label or nameplate must be prepared by cleaning with isopropyl alcohol. Solvent is to be applied with a clean, lint free applicator and surface allowed to dry before applying the label or nameplate.

#### TORQUE SPECIFICATION CHART FOR FASTENERS LOCATED ON PAGE 4

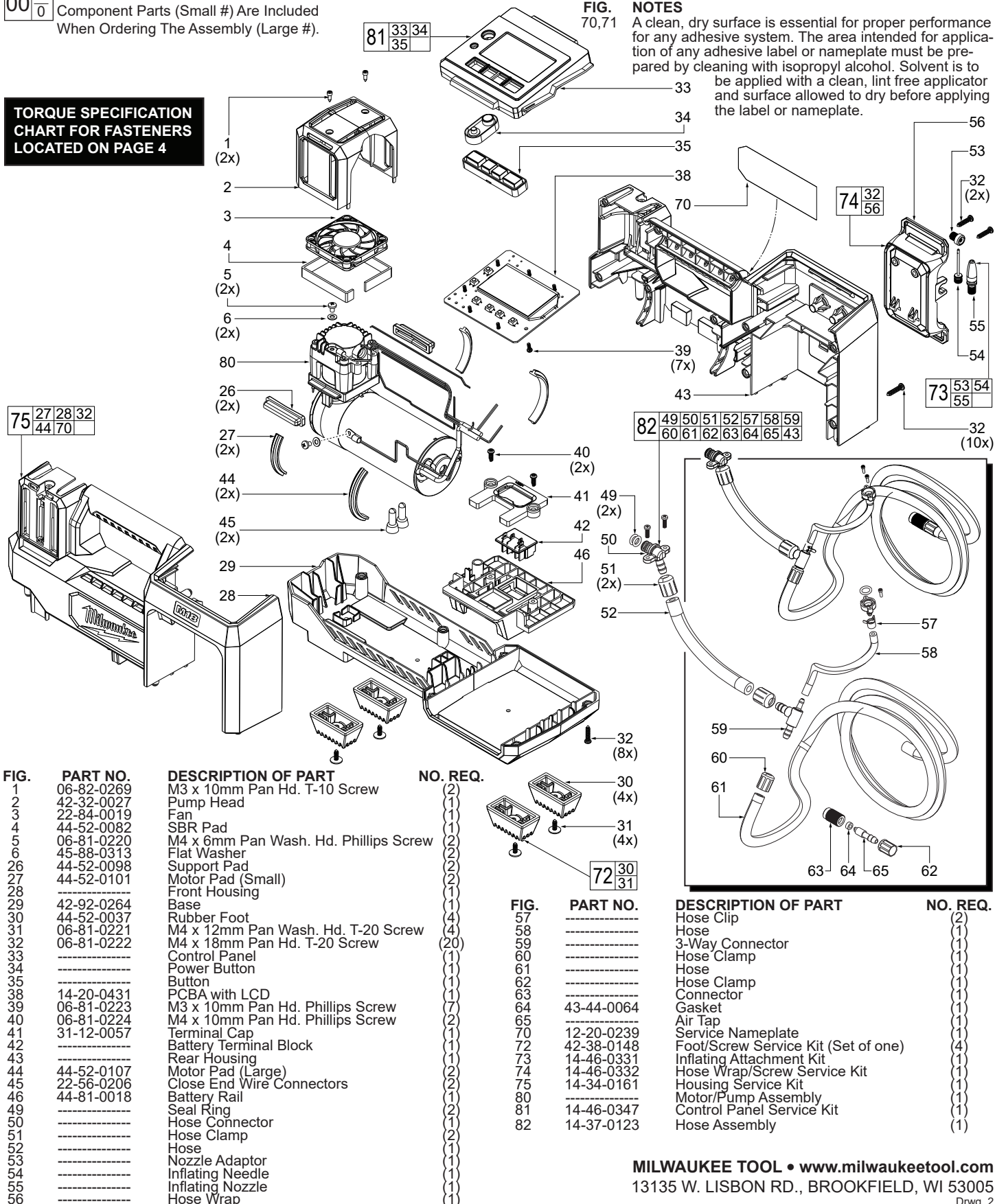


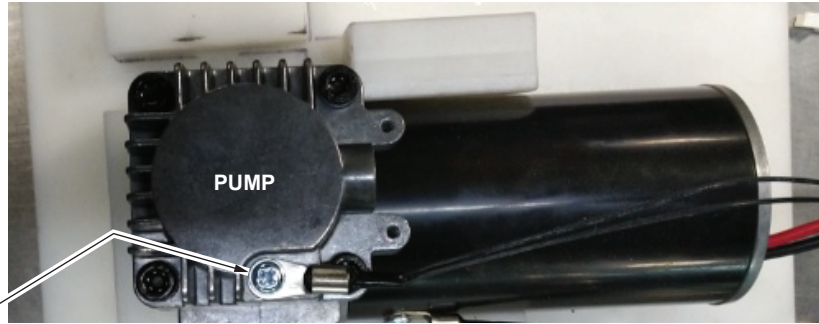
FIG.	PART NO.	DESCRIPTION OF PART	NO. REQ.
1	06-82-0269	M3 x 10mm Pan Hd. T-10 Screw	(2)
2	42-32-0027	Pump Head	(1)
3	22-84-0019	Fan	(1)
4	44-52-0082	SBR Pad	(1)
5	06-81-0220	M4 x 6mm Pan Wash. Hd. Phillips Screw	(2)
6	45-88-0313	Flat Washer	(2)
26	44-52-0098	Support Pad	(2)
27	44-52-0101	Motor Pad (Small)	(2)
28	-----	Front Housing	(1)
29	42-92-0264	Base	(1)
30	44-52-0037	Rubber Foot	(4)
31	06-81-0221	M4 x 12mm Pan Wash. Hd. T-20 Screw	(4)
32	06-81-0222	M4 x 18mm Pan Hd. T-20 Screw	(20)
33	-----	Control Panel	(1)
34	-----	Power Button	(1)
35	-----	Button	(1)
38	14-20-0431	PCBA with LCD	(1)
39	06-81-0223	M3 x 10mm Pan Hd. Phillips Screw	(7)
40	06-81-0224	M4 x 10mm Pan Hd. Phillips Screw	(2)
41	31-12-0057	Terminal Cap	(1)
42	-----	Battery Terminal Block	(1)
43	-----	Rear Housing	(1)
44	44-52-0107	Motor Pad (Large)	(2)
45	22-56-0206	Close End Wire Connectors	(2)
46	44-81-0018	Battery Rail	(1)
49	-----	Seal Ring	(2)
50	-----	Hose Connector	(1)
51	-----	Hose Clamp	(2)
52	-----	Hose	(1)
53	-----	Nozzle Adaptor	(1)
54	-----	Inflating Needle	(1)
55	-----	Inflating Nozzle	(1)
56	-----	Hose Wrap	(1)

FIG.	PART NO.	DESCRIPTION OF PART	NO. REQ.
57	-----	Hose Clip	(2)
58	-----	Hose	(1)
59	-----	3-Way Connector	(1)
60	-----	Hose Clamp	(1)
61	-----	Hose	(1)
62	-----	Hose Clamp	(1)
63	-----	Connector	(1)
64	43-44-0064	Gasket	(1)
65	-----	Air Tap	(1)
70	12-20-0239	Service Nameplate	(1)
72	42-38-0148	Foot/Screw Service Kit (Set of one)	(4)
73	14-46-0331	Inflating Attachment Kit	(1)
74	14-46-0332	Hose Wrap/Screw Service Kit	(1)
75	14-34-0161	Housing Service Kit	(1)
80	-----	Motor/Pump Assembly	(1)
81	14-46-0347	Control Panel Service Kit	(1)
82	14-37-0123	Hose Assembly	(1)

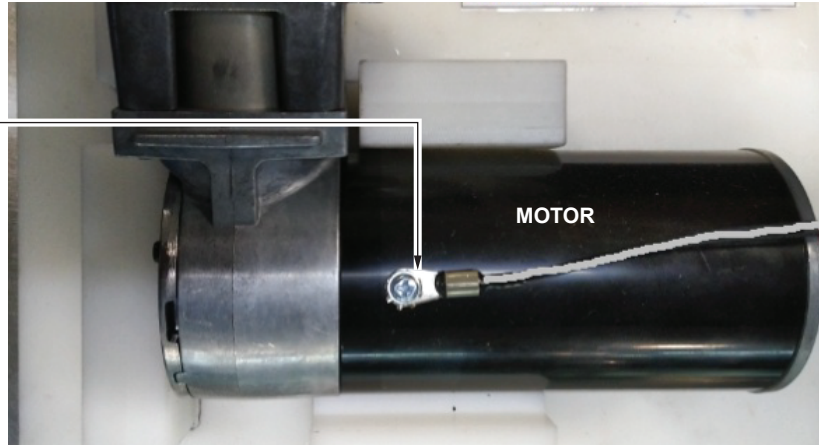
## WIRING INSTRUCTIONS



Screw the NTC black wire to the pump.



Screw the NTC white wire to the motor.

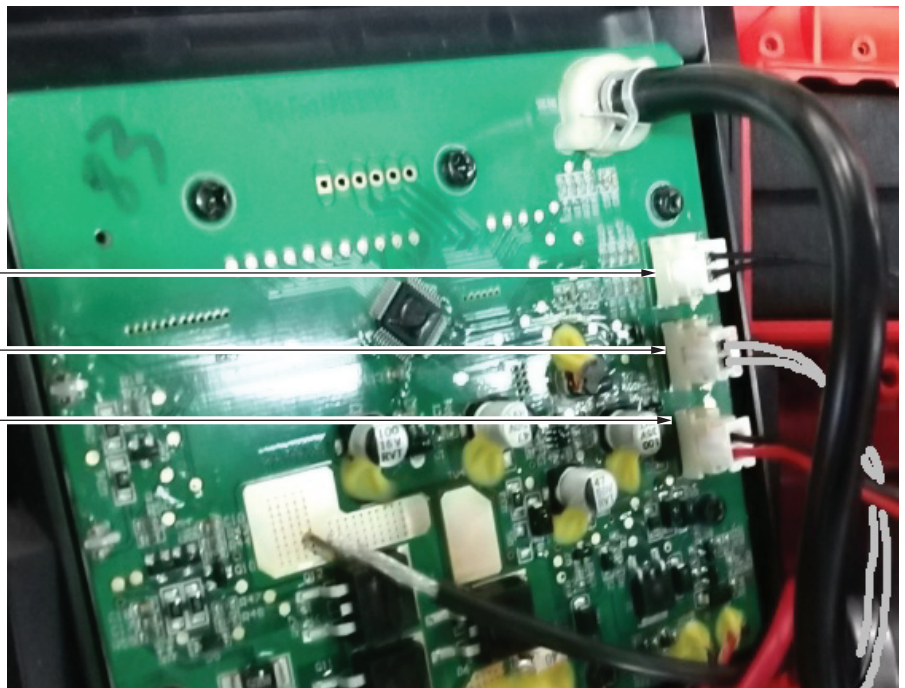


Crimp motor black wire and PCB black wire together using close end connector.  
Crimp motor red wire and PCB red wire together using close end connector.

Insert the black NTC terminal into PCBA.

Insert the white NTC terminal into PCBA.

Insert the black and red fan terminal into the PCBA.





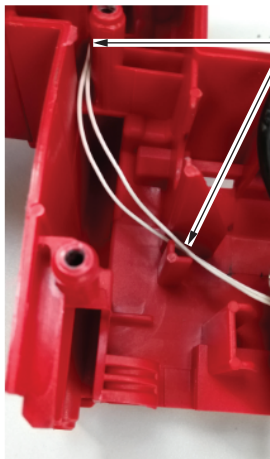
## WIRING INSTRUCTIONS continued



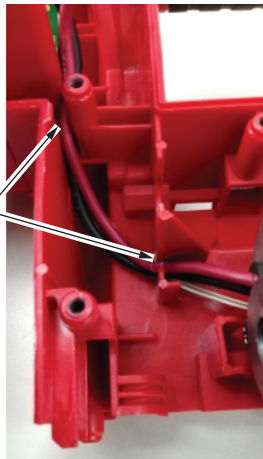
Place the black NTC wires into wire traps as shown.



Place the red and black fan wires into wire traps as shown.



Place the white NTC wires into wire traps as shown.



Place the red and black motor wires into wire traps as shown.

**As an aid to reassembly, take notice of wire routings and position in wire guides and traps while dismantling tool.**

**Be sure that all components of electronics kit are seated firmly and squarely in housing recesses.**

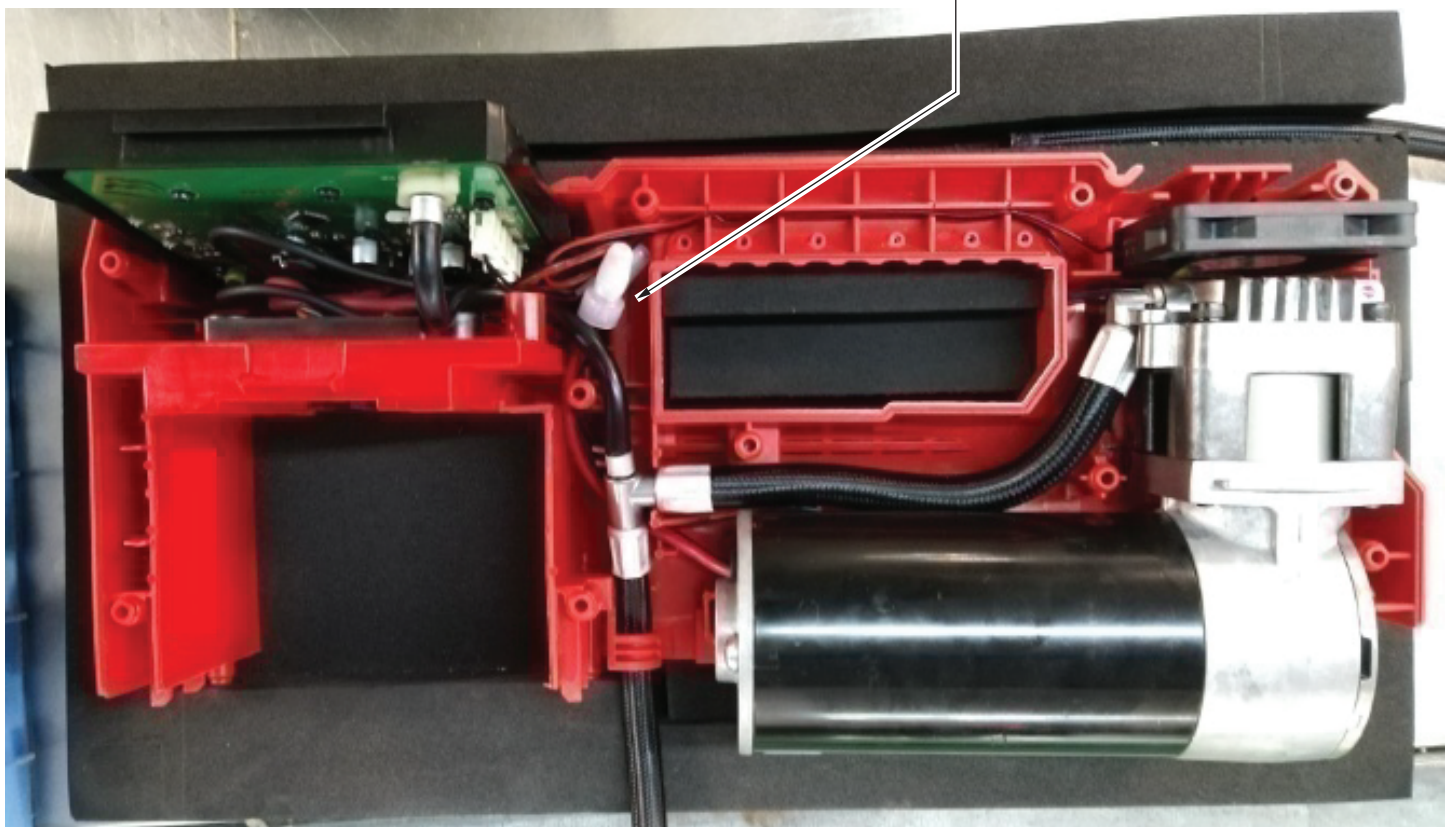
**Avoid pinched wires, be sure that all wires and sleeves are pressed completely down in wire traps.**

**Prior to securing housing cover onto the housing support, be sure that there are no interferences.**

**Before installing the battery, check for proper functionality of shuttles and triggers.**

**Install battery and depress switch triggers to assure tool is operating properly.**

Place close end connectors down into cavity area as shown.



## SCREW TORQUE SPECIFICATIONS

FIG.	PART NO.	DESCRIPTION OF FASTENER	WHERE USED	SEAT TORQUE	
				(N.m)	(IN/LBS)
1	06-82-0269	M3 x 10mm Pan Hd. T-10 Screw	Pump Head and Front Housing/Rear Housing	0.35-0.55	3.097-4.867
5	06-81-0220	M4 x 6mm Pan Wash. Hd. Phillips Screw	NTC and Cylinder Cap	0.35-0.55	3.097-4.867
31	06-81-0221	M4 x 12mm Pan Wash. Hd. T-20 Screw	Rubber Feet and Base	0.1-0.3	0.885-2.655
32	06-81-0222	M4 x 18mm Pan Hd. T-20 Screw	Base and Front Housing/Rear Housing	0.5-0.8	4.425-7.080
32	06-81-0222	M4 x 18mm Pan Hd. T-20 Screw	Front Housing and Rear Housing	1.0-1.4	8.850-12.391
32	06-81-0222	M4 x 18mm Pan Hd. T-20 Screw	Hose Wrap and Rear Housing	0.75-0.95	6.637-8.407
39	06-81-0223	M3 x 10mm Pan Hd. Phillips Screw	PCBA and Control Panel	0.35-0.55	3.097-4.867
40	06-81-0224	M4 x 10mm Pan Hd. Phillips Screw	Terminal Cap and Battery Rail	0.75-0.95	6.637-8.407