

Insta360

Mini Remote 迷你蓝牙遥控器

Instructions for Use

使用说明

Gebrauchsanleitung

Instrucciones de uso

Istruzioni per l'Uso

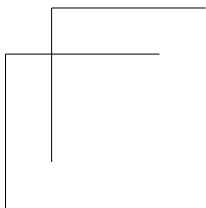
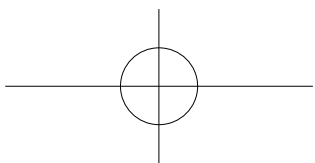
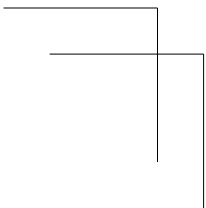
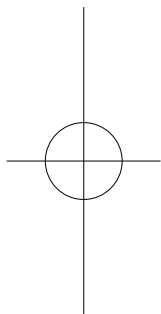
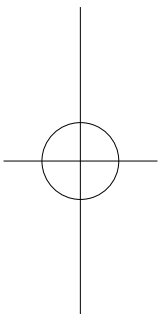
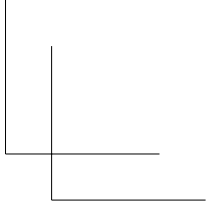
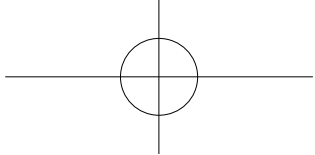
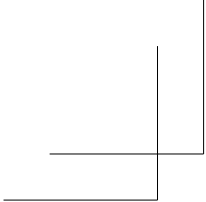
Instrukcja użytkowania

取扱説明

사용 가이드

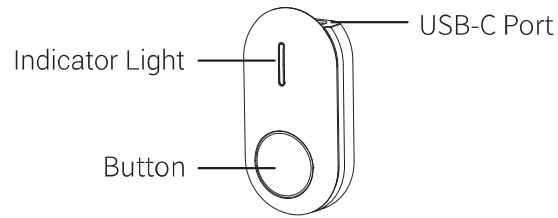
使用説明

EN / CN / DE / ES / IT / PL / JA / KO / TC



EN

1. Product Appearance



Indicator Light

Indicator Light Status	Mini Remote Status
No light	Powered off, fully charged
Flashing green	Powering on/off, pairing with camera, taking a photo
Solid green	Successfully paired with camera
Solid red	Charging
Flashing red	Recording a video
Flashing yellow	Low battery

2. Charging

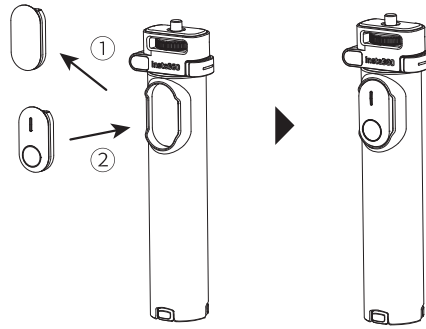
Connect the USB-C Port on the Mini Remote with a 5V/1A power adapter. It takes around 90 minutes for a full charge.



3. Installation

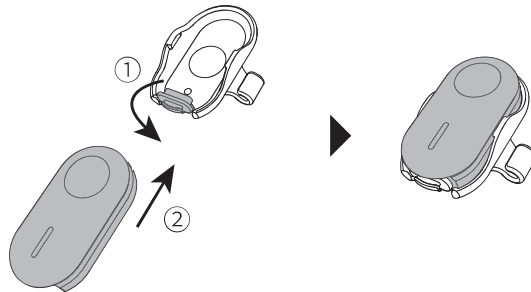
- Attach Mini Remote to Foldable 2-in-1 Selfie Stick (1/4" Mount)

Remove the Storage Cover from the Foldable 2-in-1 Selfie Stick (sold separately) and insert the Mini Remote.

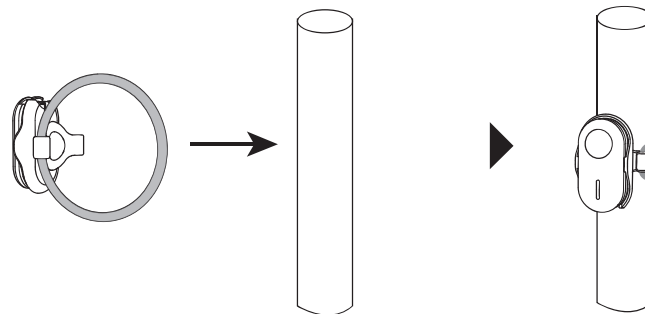


• **Attach Mini Remote to Mini Remote Base**

Open the bottom cover of the Mini Remote Base, insert the Mini Remote, and then cover the Mini Remote's USB-C Port with the bottom cover.



Choose an appropriate Mini Remote Strap and hook it onto one side of the Mini Remote Base. Wrap it around any mounts or accessories, such as a selfie stick, then hook it onto the other side of the base.



The Mini Remote can rotate freely when attached to the Mini Remote Strap.

4. How to Use

Power On/Off

- Hold the button for two seconds to turn the Mini Remote on.
- When the camera is disconnected and the remote is on, hold 2



the button for two seconds to turn the Mini Remote off.

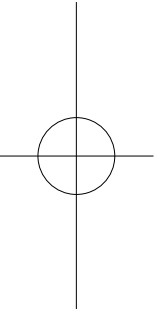
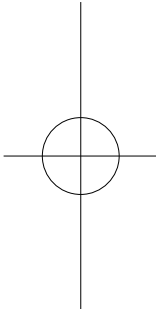
- When the camera is connected and the remote is on, hold the button for two seconds to turn the camera and the remote off simultaneously.

Connect Camera

Power on the Mini Remote and the camera. Swipe down on the camera's touchscreen, tap the Bluetooth Remote icon and tap "Insta360 Mini Remote". If paired successfully, the camera's screen will display "Connected" and the Mini Remote's Indicator Light will be solid green.

Wake Up Camera

Once connected via Bluetooth:

- 
- 
- Turn off the camera and remote simultaneously by pressing and holding the button on the remote for two seconds.
 - Turn on the remote and wake up the camera by pressing and holding the button on the remote for two seconds.
 - Activate QuickCapture by pressing the button on the remote once. Press again when the blue indicator light activates to wake up the camera, start recording, and also turn on the remote.

Take Photo/Video

Once the Mini Remote is connected to the camera, press the button once to take a photo or record a video. Press the button again to stop recording.

Mark Video

If the Mini Remote is connected to the camera and the camera is recording a video, press the button twice to mark the video as a highlight.

Pre-Recording

If the camera is powered on with Pre-Recording enabled, press the Mini Remote's button once to start Pre-Recording.

Notes:

- Update your camera to the latest official firmware before

using the Mini Remote.

- The Mini Remote can be used up to 33ft (10m) away when there are no obstacles or interference.
- For camera compatibility, please check Insta360's official website and keep the Mini Remote's firmware up to date.
- After the first successful connection, the Mini Remote can wake the camera up without repeating the connection steps.

InstaFrame Mode

When using the Mini Remote to control Insta360 X5 remotely, you can adjust the angle while shooting in InstaFrame Mode.

- Press the Mini Remote twice to switch between Fixed View and Selfie View.
- Press the Mini Remote three times for a 360° spin or barrel roll. You can choose between a 360° spin and barrel roll effect in the Mini Remote's settings.

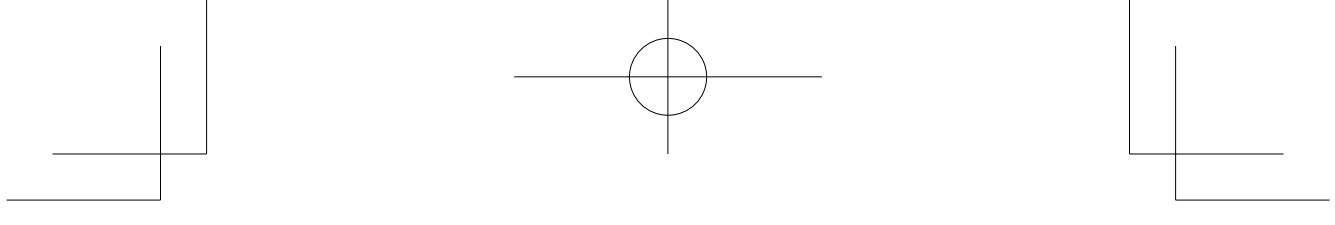
Note: If the Fixed View you choose is looking at you, pressing the button twice when recording will keep you in frame throughout the video.

5. Firmware Update

Open the Insta360 app > Me > Accessory Settings, then connect to the remote. If there is new firmware, an update note will pop up. Please update the remote according to the instructions on the App.

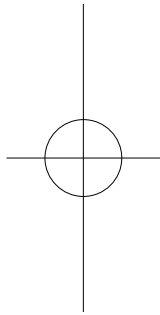
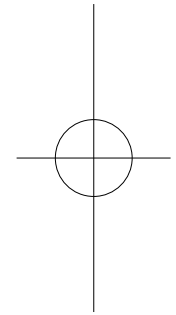
6. Specs

Model: CINSCAVV	
Mini Remote Straps Diameter	4cm (1.6in), 5cm (2in)
Battery	Capacity: 60mAh
	Energy: 0.222Wh
	Type: Li-ion
Charging Temperature	32°F to 113°F (0°C to 45°C)
Operating Temperature	14°F to 113°F (-10°C to 45°C)
Storage Temperature	23°F to 95°F (-5°C to 35°C)



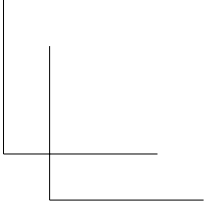
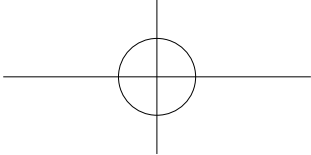
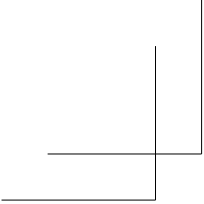
Input	DC 5V/1A
	Protocol: 5.0
Bluetooth	Operation Frequency: 2402-2480MHz
	Output Power (E.I.R.P.) <10dBm

Safety Information

- 
- The Mini Remote contains magnets. Keep it away from pacemakers and other devices to avoid interference.
 - The Mini Remote is currently compatible with Insta360 Ace Pro 2, X5, X4, X3, and GO 3S. Please check the official Insta360 website for camera compatibility updates.
 - When the Mini Remote is attached to a selfie stick or bike handlebars, ensure the strap is tied tightly and avoid high-speed activities to prevent the remote from falling off.
 - This product should be used in temperatures from 14°F to 113°F (-10°C to 45°C) with humidity between 0–75%.
 - This product is splash-resistant only. If it gets wet, dry it as soon as possible.
 - Ensure that the USB-C Port is completely dry. If it gets wet, dry it immediately with a soft cloth.
 - If the product is unused for a long time (e.g., two months or longer), the battery might drain completely. To avoid this, charge it and turn it on occasionally.
 - Avoid dropping, hitting, or placing heavy items on the product to avoid damage.
 - Do not clean the product or USB-C Port with any cleaning products or liquid detergent, as it could corrode or rust the Mini Remote. If you need to clean it, use a soft, dry cloth.
- 

Disclaimer

Please read this Disclaimer carefully. Using this product means that you acknowledge and accept the terms of this disclaimer. By using this product, you hereby acknowledge and agree that you are solely responsible for your own conduct when using this product and any consequences thereof. You agree to use this product only for proper and lawful purposes.



You understand and agree that Arashi Vision Inc. (hereinafter referred to as 'Insta360') accepts no liability for any and all misuse, consequences, damages, injuries, penalties, or any other legal responsibility directly or indirectly incurred by your using this product and associated accessories. Before every use, make sure that your accessories are functioning properly. If there's any damage or irregularity, stop using them immediately. Within the scope of state laws and regulations, Insta360 reserves the right of final explanation and revision for the commitment.

After-Sales Service

The warranty period of the attached product is 6 months from the original retail purchase. Warranty service may vary according to the applicable laws of your state or jurisdiction. For detailed warranty policies, please visit <https://insta360.com/support>

