

Thank you for purchasing ZTW Shark G2 Brushless Electronic Speed Controller (ESC). Please read this manual carefully before using this product for the sake of safety. ZTW Model have no control over the use, installation, application, or maintenance of these products, thus no liability shall be assumed nor accepted for any damages, losses of costs resulting from the use of this item.

Important warnings

- ZTW is not responsible for your use of this product, or any damage or injuries you may cause or sustain as a result of its usage.
- Always place safety as priority when you use the product.
- An electric motor that is connection with battery pack and ESC may start unexpectedly and cause serious danger. Always treat them with enough respect.
- We recommend you to remove the propeller when you working on the plane that with power source connected.
- Observe all local laws when you fly a RC airplane.
- Never fly over others or near crowds.

Key features

1. Adopting new generation craft on the MOSFET, low heat generation, withstand large current instantly, and high reliability.
2. Adopting high performance 32 bit microprocessor, stronger computing ability and faster running speed.
3. The ESC is waterproof and glued, and the flat water-cooling design ensures efficient heat dissipation.
4. Super smooth start-up and accurate throttle linearity make the ESC suitable for all kinds of RC boat models.
5. The ESC has two running modes for different applications: "Forward Only" and "Forward and Backward".
6. Higher driving efficiency and more energy-saving.
7. Adjustable SBEC 5V/6V output voltage provides more powerful power to the servo.
8. Multiple protections: start-up, over-heat, low-voltage cutoff, signal loss, phase loss.
9. Support high RPM motors, and compatible with most motors in the market.
10. Support programming via Phone App or LCD program card, easier and more convenient operation(Extra ZTW App adapter or LCD program card needed.)

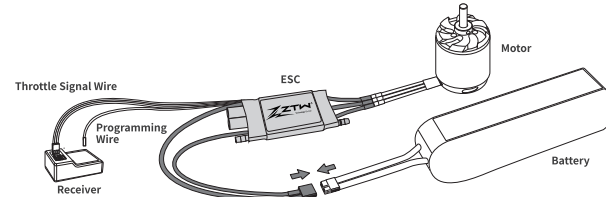
Specification

Type	PN#Model	Cont./Burst Current(A)	Battery cell NIXX(Lipo)	Weight (g)	BEC Output	Size(mm) L*W*H	User Program
Shark 20A SBEC G2	7020210	20A\30A	5-12NC\2-4Lipo	32	5V/6V 4A	60*33*10	Yes
Shark 30A SBEC G2	7030210	30A\40A	5-12NC\2-4Lipo	36	5V/6V 4A	60*33*10	Yes
Shark 40A SBEC G2	7040210	40A\55A	5-12NC\2-4Lipo	45	5V/6V 4A	69*33*9	Yes
Shark 50A SBEC G2	7050210	50A\65A	5-12NC\2-4Lipo	45	5V/6V 4A	69*33*9	Yes
Shark 60A SBEC G2	7060210	60A\80A	5-18NC\2-6Lipo	65	5V/6V 8A	70*41*12	Yes
Shark 80A SBEC G2	7080210	80A\100A	5-18NC\2-6Lipo	98	5V/6V 8A	89*45*13	Yes
Shark 100A SBEC G2	7100210	100A\120A	5-18NC\2-6Lipo	105	5V/6V 8A	89*45*13	Yes

Wires Connection:

The speed controller can be connected to the motor by soldering directly or with high quality connectors. Always use new connectors, which should be soldered carefully to the cables and insulated with heat shrink tube. The maximum length of the battery pack wires shall be within 6 inches.

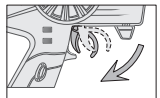
- Solder controller to the motor wires.
- Solder appropriate connectors to the battery wires.
- Insulate all solder connectors with heat shrink tubes.
- Plug the "JR" connector into the receiver throttle channel.
- Controller Red and Black wires connects to battery pack Red and Black wires respectively.



Throttle calibration

Important: Please make the throttle calibration for the first time using ESC!

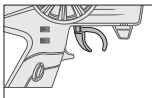
Throttle calibration by pistol transmitter:



Turn on the transmitter, move the throttle stick to the top position

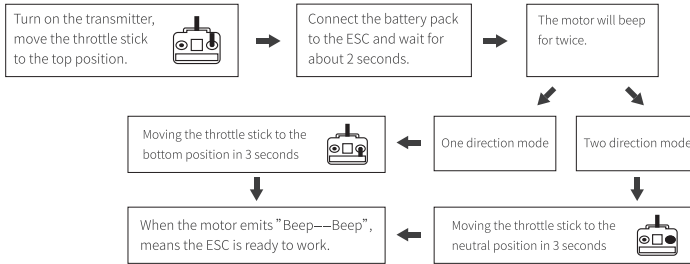


The motor will beep for twice, then release the throttle stick to the neutral position in 3 seconds.

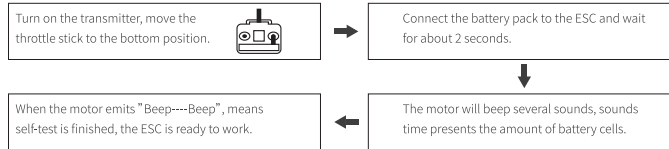


When the motor emits a long "Beep---Beep", means the ESC is ready to work.

Throttle calibration by stick transmitter



Normal startup procedure



Programming items(the option written in bold font is the default setting)

1. Running Mode: Forward Only/**Forward and Backward**
2. Brake Type: **OFF**/Soft/Mid/Hard
3. Timing: **Auto**/Low/Mid/High(5°/15°/25°)
4. Motor Rotation: **CW**/CCW
5. SR function: **ON**/**OFF**
The synchronous rectification function makes ESC with higher driving efficiency and more energy-saving.
6. Battery cells: **Auto**/2S/3S/4S
7. Low Voltage Cutoff Threshold: OFF/NIMH50%/NIMH60%/3.0V/3.2V/3.4V/3.6V
For example: using 3 lithium batteries and setting 3.0V as the low voltage cutoff value, then the low voltage protection threshold is: 3*3.0 = 9.0V
8. Low Voltage Cutoff Type: **Reduce Power**/Cut Off Power
Reduced power: When the voltage drops to the set low-voltage protection threshold, the ESC will reduce power to 70%.
Cut Off power: When the voltage drops to the set low-voltage protection threshold, the ESC will cut off the power immediately.
9. BEC: 5V/6V
10. Acceleration: **Normal**/Soft

Entering the programming mode

1. Turn on the transmitter, move the throttle stick to the top position.
2. Connect the battery pack to ESC.
3. Wait for 2 seconds, the motor will emit special tone like "beep-beep beep"
4. Wait for another 3 seconds, the motor will emit special tone like "123", which means program mode entered.

Programmable items

After entering program mode, you will hear 11 tones in a loop with the following sequence.

Tones	Programmable items
1). "beep"	Running Mode (1 short tone)
2). "beep.beep"	Brake Type (2 short tone)
3). "beep.beep.beep"	Motor Timing (3 short tone)
4). "beep.beep.beep.beep"	Motor Rotation (4 short tone)
5). "beep- -"	SR Function (1 long tone)
6). "beep- -.beep"	Battery cells (1 long 1short)
7). "beep- -.beep.beep"	Low Voltage Cutoff Threshold (1 long 2 short)
8). "beep- -.beep.beep.beep"	Low Voltage Cutoff Type (1 long 3 short)
9). "beep- -.beep.beep.beep.beep"	BEC Voltage (1 long 4 short)
10). "beep- -.beep- -"	Acceleration (2 long tone)
11). "beep- -.beep- -.beep"	Restore Factory Setup Defaults (2 long 1 short)

🔊 Note: 1 long "beep- -" = 5 short "beep"

Set item value

Moving the throttle stick to the bottom position within 2 seconds after one kind of following tones, this item will be selected. After the programmable item selected, then you will hear several tones in loop as follows on each programmable item, set the value matching to a tone by moving throttle stick to top position when you hear the tone, then the motor will emit special tone like "123", means this value is set and saved.

For example: If you want to set the motor rotation, when you hear four short tones of "Beep", moving the throttle stick to the bottom position within 2 seconds, means you enter the motor rotation menu. One short tone of "Beep" is forward direction(CW), two short tones of "Beep" is reverse direction(CCW). If you want to set to reverse direction(CCW), moving the throttle stick to the top position when you hear the two short tones of "Beep", then you will hear a special confirmation tone like "123", which means the "CCW" is set and saved.

Keeping the throttle stick at top, you will go back to programming mode and you can select other items; or moving the stick to bottom within 2 seconds will exit program mode directly).

Programming tone reference table

Items \ Tones	"beep"	"beep.beep"	"beep.beep.beep"	"beep.beep.beep.beep"	"beep- -"	"beep- -.beep"	"beep- -.beep.beep"
	1short tone	2short tone	3short tone	4short tone	1long	1long 1short	1long 2short
Running Mode	Fwd. Only	*Fwd. & Bwd					
Brake Type	* OFF	Soft Brake	Mid Brake	Hard Brake			
Motor Timing	*Auto	Low	Mid	High			
Motor Rotation	* CW	CCW					
SR Function	ON	*OFF					
Battery Cells	*Auto	2S	3S	4S	5S	6S	
Low voltage Cutoff Threshold	OFF	NIMH50%	NIMH60%	*3.0V	3.2V	3.4V	3.6V
Low voltage Cutoff Type	* Reduce Power	Cut off Power					
BEC Voltage	* 5V	6V					
Acceleration	* Normal	Soft					
Restore Factory Default Sets							Restore

🔊 Note: " " " value means default settings.

Protection function

1. Start-up protection: If the motor fails to start normally within 2 seconds after pushing the throttle to start, the ESC will cut off the output power, and you need to make the throttle calibration again, then ESC can be restarted. Possible reasons: disconnection or poor connection between ESC and motor, the propeller or motor is blocked by other objects, the gearbox is damaged, etc.)
2. Over-heat protection: When the temperature of the ESC is over about 110°C, the ESC will automatically reduce the output power for protection, but will not fully shut down the power, reduce it to 70% of the full power at most to ensure the motor has enough power to avoid crashes.
3. Throttle signal loss protection: The ESC will reduce the output power if throttle signal is lost for 1 second, will cut off output to the motor if the throttle signal is lost over 2 seconds. If the throttle signal recovers during power down, the ESC will immediately resume throttle control. In this way, the ESC will not protect when the signal loss less than 2 seconds, only when the signal loss is over 2 seconds or longer time. And the ESC will reduce the output power gradually instead of cutting off it immediately, so the player has certain amount of time to save the plane, taking into account safety and practicality.
4. Over load protection: The ESC will cut off power or restart automatically when the load increased a lot suddenly, possible reason is the motor blocked.

Trouble shooting

Trouble	Possible Reason	Action
After powering up, ESC emits the sound of battery cells, but motor can't run.	ESC doesn't set throttle range.	Set throttle range again.
After powering up, motor doesn't run and doesn't emit any sound.	1.Bad connection between ESC and battery. 2.Bad soldering cause bad contact. 3.Low voltage of the battery. 4.Quality problem of ESC.	1.Clean the connectors or replace them, check the connection polarity. 2.Solder the wires again. 3.Check battery pack, use full-charged battery. 4.Change ESC.
Motor does n't work and no audible tone emitted after connecting the battery. Servos are not working either.	1. Poor/loose Connection between battery Pack and ESC. 2. No power 3. Poor soldered connections 4. Wrong battery cable polarity 5. ESC throttle cable connected to receiver in the reverse polarity	Check all the connections make sure you are doing it right.
Motor does not work but servos do	1. Poor / loose connection between ESC and motor 2. Burnt motor coils 3. The battery pack voltage exceeds the acceptable range. 4. Throttle stick is not at the lowest position 5. The ESC throttle calibration has not set up	1. Check all the connections make sure you are doing it right. 2. Change a new motor. 3. Solder the wires again. 4. Check the battery pack, use full-charged battery. 5. Set throttle range again.
When the ESC is powered on, the motor does not work and an alarm sound (continuously beeping) will sound.	The throttle stick is not in the bottom position after power on.	Move the throttle stick to the bottom position.
Motor runs in reverse rotation	Wrong cables polarity between the ESC and the motor.	Swap any two of the three cable connections between the ESC and the Motor or access the Motor Rotation function via the ESC programming mode and change the pre-set parameters.
Motor stops running in flight.	Lost throttle signal	Check proper operation of the radio equipment. Check the placement of the ESC and the Receiver and check the route of the receiver's aerial and ESC

Shenzhen ZTW Model Science & Technology Co.,Ltd

ADD: 2/F, Block 1, GuanFeng Industrial Park, Jiuwei, Xixiang, Baoan, Shenzhen, China, 518126

TEL: +86 755 29120026, 29120036, 29120056 FAX: +86 755 29120016 WEBSITE: www.ztvoem.com EMAIL: support@ztvoem.com



鲨鱼 SHARK G2 系列

无刷电子调速器说明书

感谢您使用中特威科技有限公司设计、制造的无刷电子调速器(ESC)。我们强烈建议您在使用之前阅读本使用手册。深圳市中特威科技有限公司有权不经通知变更其产品,包括其外观和性能参数及使用要求;对其产品是否适合特定用途不作任何保证、申明或承诺。不承担因第三方产品相关修改所引起的任何责任,中特威科技有限公司也不承担因应用该产品而产生的任何责任,包括直接损失或间接损失的赔偿责任。

安全须知

检验无线电接收装置上的正确设置,第一次测试电调和马达时不要在马达上安装螺旋桨或传动小齿轮,只有当您确认了无线电接收装置上的设置正确后方能安装螺旋桨或传动小齿轮。

- 不要使用裂开或被刺破的蓄电池组电池
- 不要使用会变得过热的电池组
- 不要使用短路电池或马达接线端
- 电缆绝缘要用正确的绝缘材料
- 使用正确的电缆连接器
- 电池或伺服系统的数量不要超过电调的规定
- 错误的电池极性会损坏电调

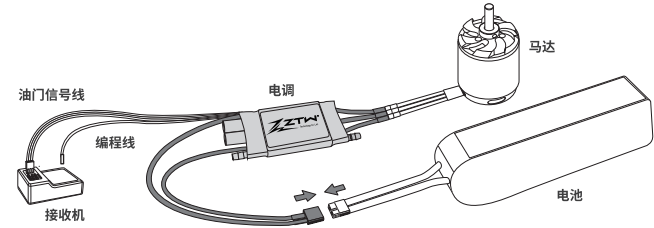
主要特性

1. 功率输出元器件(MOSFET)选用新一代的制作工艺,发热低,瞬间承受电流大,可靠性高。
2. 高性能32位处理器,运算能力更强,运行速度更快。
3. 电调防水灌胶处理,扁平式水冷设计,确保高效散热。
4. 超流畅的启动与精准的油门线性,适用于各种船模。
5. 具有正转(单向)和正反转(双向)两种运行模式。
6. 效率高,电调更节能,续航时间更长。
7. SBEC 5V/6V两档可调,持续8A电流供应,给舵机提供更强劲的助力。
8. 多重保护:启动保护,过温保护,低压保护,缺相保护,信号丢失保护。
9. 自动识别马达进角,支持高RPM马达,可兼容市面上绝大多数马达。
10. 支持手机App或LCD编程,操作更简单方便(需单独购买ZTW蓝牙模块或LCD编程卡)。

产品规格

型号	PN#Model	持续/瞬时电流(A)	输入电压	重量(g)	BEC输出	尺寸(mm) 长*宽*高	是否支持编程
Shark 20A SBEC G2	7020210	20A/30A	5-12NC/2-4Lipo	32	5V/6V 4A	60*33*10	Yes
Shark 30A SBEC G2	7030210	30A/40A	5-12NC/2-4Lipo	36	5V/6V 4A	60*33*10	Yes
Shark 40A SBEC G2	7040210	40A/55A	5-12NC/2-4Lipo	45	5V/6V 4A	69*33*9	Yes
Shark 50A SBEC G2	7050210	50A/65A	5-12NC/2-4Lipo	45	5V/6V 4A	69*33*9	Yes
Shark 60A SBEC G2	7060210	60A/80A	5-18NC/2-6Lipo	65	5V/6V 8A	70*41*12	Yes
Shark 80A SBEC G2	7080210	80A/100A	5-18NC/2-6Lipo	98	5V/6V 8A	89*45*13	Yes
Shark 100A SBEC G2	7100210	100A/120A	5-18NC/2-6Lipo	105	5V/6V 8A	89*45*13	Yes

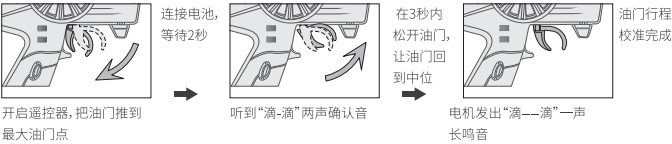
调速器接线说明(线连接用热缩管收缩使其绝缘,避免短路烧毁调速器)



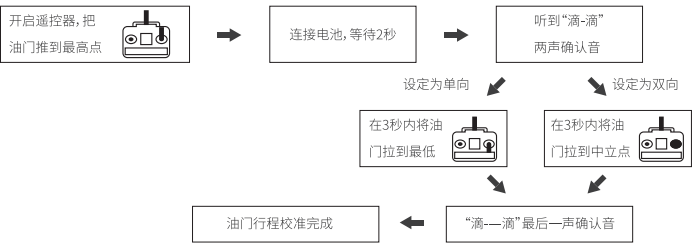
首次使用电调并设置油门行程

温馨提示:在首次使用本电调或更换其他遥控器使用时,请务必先重新设定油门行程。

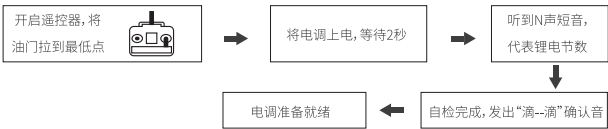
使用枪控遥控器时,油门行程设置方法如下:



使用板控遥控器时,油门行程设置方法如下:



电调的正常启动程序



编程项简要说明(黑体字为出厂默认值)

1. 油门类型: 单向/双向
2. 刹车力度: 关闭/软/中度/最大
3. 进角: 自动/低/中/高 (分别为5度/15度/25度)
4. 马达方向: **正向**/反向
正向: 电机默认旋转方向
反向: 将电机旋转方向更改
5. 动能回收: 打开/关闭
效率更高, 更节能, 续航时间更长
6. 锂电节数: 自动/2S/3S/4S
7. 低压保护点: 关闭/2.3V/2.5V/3.0V/3.2V/3.4V/3.6V
例如: 使用3节锂电, 设定为3.0V为低压保护值, 则低压保护阈值为: 3*3.0 = 9.0V
8. 保护方式: 降低功率/立即关断
降低功率: 当达到预设的低压保护阈值时, 电调减少输出功率至70%
立即关断: 当达到预设的低压保护阈值时, 电调立即关断输出功率
9. BEC: 5V/6V
10. 加速度: 普通/柔和

电子调速器编程设置模式

首先将遥控器油门拉杆推至最高位置, 打开遥控器电源, 将电池组连接到调速器, 2秒后电机“滴-滴滴”声响, 停3秒, 发出123特殊声音, 表示进入编程模式. 设置音按以下顺序滚动播放:

- 1). “滴” 油门类型 (1短音)
- 2). “滴 滴” 刹车力度 (2短音)
- 3). “滴. 滴. 滴” 进角 (3短音)
- 4). “滴. 滴. 滴. 滴” 马达转向 (4短音)
- 5). “滴——” SR功能 (1长音)
- 6). “滴——滴” 电池节数 (1长1短音)
- 7). “滴——滴. 滴” 低压保护值 (1长2短音)
- 8). “滴——滴. 滴. 滴” 电压保护类型 (1长3短音)
- 9). “滴——滴. 滴. 滴. 滴” BEC输出 (1长4短音)
- 10). “滴——滴——” 加速度 (2长音)
- 11). “滴——滴——滴” 恢复出厂默认 (2长音1短音)

❶ 注: 一声长响相当于五声短响。

在听到某个提示音后, 2S内将油门拉杆打到最低, 则进入该设定项, 马达会循环鸣叫, 在鸣叫某个提示音后将油门拉杆打到最高点, 则选择该提示音所对应的设定值, 接着会听到123特殊确认音, 表示设置成功。

例如: 设置马达转向, 听到“滴滴滴滴”四短音, 表示进入马达转向菜单, 在2S内将遥控器油门打到最低, 听到“滴”一短音代表正向(CW), “滴滴”两短音代表反向(CCW), 如想设置为反向(CCW), 则在听到“滴滴”两短音时将油门拉杆打到最高, 会听到123特殊确认音, 表示设置成功, 2秒内将油门拉杆打到最低位置。(如果听到确定音之后, 超过2秒油门仍在最高位, 则重新进入编程模式) 重复以上操作, 设置您所需要的各种功能。

退出设定: 参数设置成功后, 立即将油门拉杆打到最低位置, 即表示退出设定。

编程参数表

提示音	“滴”	“滴. 滴”	“滴. 滴. 滴”	“滴. 滴. 滴. 滴”	“滴——”	“滴——滴”	“滴——滴. 滴”
设定项	1短音	2短音	3短音	4短音	1长音	1长1短音	1长2短音
油门类型	单向	双向					
刹车力度	关闭	软刹车	中度刹车	最大刹车			
进角	自动	低	中	高			
马达转向	正向(CW)	反向(CCW)					
SR功能	打开	关闭					
电池节数	自动	2S	3S	4S	5S	6S	
低压保护值	关闭	NIMH 50%	NIMH 60%	3.0V	3.2V	3.4V	3.6V
电压保护类型	降低功率	立即关断					
BEC输出	5V	6V					
加速度	普通	柔和					
恢复出厂默认	复位						

❶ 注: 灰色为出厂默认选项参数。

保护功能

1. 启动保护: 当推油门启动后, 如在两秒内未能正常启动电机, 电调将会关闭电机, 油门需要重新设置, 才可以重新启动. 可能原因: 电调与电机接线断开或接触不良、螺旋桨被其他物体阻挡、减速齿卡死等。
2. 温度保护: 当电子调速器工作温度超过 110 度时, 电调将自动降低输出功率进行保护, 但不会将输出功率全部关闭, 最多降到全功率的 70%, 以保证电机留有一定动力, 避免摔机。
3. 油门信号丢失保护: 当电调检测到油门信号丢失1秒后, 将自动减少对马达的输出功率, 然后油门信号丢失超过2秒, 电调将自动关断马达. 如果在降功率过程中油门信号恢复, 电调可以立即恢复油门控制. 这样在瞬间信号丢失情况下(2秒以下), 电调并不会进行油门保护; 只有当遥控信号确实长时间丢失, 才进行保护, 但电调不是立即关闭输出, 而是有一个逐步降低输出功率的过程, 给玩家留有一定的救机时间, 兼顾安全性和实用性。
4. 过负荷保护: 当负载突然变得很大时, 电调会切断动力, 或自动重启, 出现负载急剧增加的原因通常是马达堵转。

常见问题解答

出现的问题	可能的原因	解决方法
接通电调后有自动检测电池节数声音, 但马达不能启动	电调没有油门行程设置	对电调进行油门行程设置
马达不工作, 连接电池后马达未发出音乐声, 但伺服系统也未运行	电池组与电调之间接触不良 没接通电源 焊接不牢固 (接头易断) 电池电缆极性错误 电调信号线与接收机连接极性相反	清理连接器终端或替换连接器 用刚充满电的电池组替换 再次焊接电缆连接 检查并确认电缆极性 检查连接在电调上的信号线以确保处于正确极性 更换电调
马达不工作, 连接电池后马达未发出音乐声, 但伺服系统在运行接通电调后马达不工作, 发出警报音 (两声滴滴响后有短暂停顿)	电调与马达之间接触不良 马达线圈被烧 焊接不牢固 (接头易断) 电池组电压超出正常范围	检查连接器终端或替换连接器 替换马达 再次焊接电缆连接 更换为刚充满电的电池组 检查电池组电压
接通电调后马达不工作, 发出警报音 (持续地滴滴响)	通电后油门拉杆不在最小位置	将油门拉杆移至最小位置
接通电调后马达不工作, 电调发出两声长响之后, 有两声更长点的滴滴响	被颠倒的油门通道导致电调进入程序设计模式	进入发射器上的伺服系统 倒转菜单并倒转油门通道
马达反向运行	电调与马达之间错误的电缆连接	交换电调与马达之间三条电缆连接中的任意两条或者通过电调程序设计模式进入马达旋转功能并改变预设参数。
飞行过程中, 马达停止运行	丢失了油门信号	检查无线电接收装置是否操作得当。 检查电调和接收机信号线路及发送频道和电调信号线之间确保有足够的隔离来防止干扰 在电调的信号线上安装一个磁环

地址: 深圳市宝安区西乡街道九围新村冠锋工业园一栋二楼

电话: +86 755 29120026, 29120036, 29120056

网址: www.ztwoem.com

传真: +86 755 29120016

邮箱: support@ztwoem.com