

Bedienungsanleitung BS 125M



HOLZMANN-MASCHINEN GmbH
Marktplatz 4 | 4170 Haslach | AUSTRIA
Gewerbepark 8 | 4707 Schlüsslberg | AUSTRIA
Tel: +43 - 7289 / 71562-0 | Fax: +43 - 7289 / 71562-4
Tel: +43 - 7248 / 61116-0 | Fax: +43 - 7248 / 61116-6
info@holzmann-maschinen.at, www.holzmann-maschinen.at

DE Mobile
Metallbandsäge



EN mobile metal band saw

BS 125M

2010 – Revision 01, 2011-12-19

A



Dear Customer!

This manual contains Information and important instructions for the installation and correct use of the mobile metal band saw BS 125M

This manual is part of the machine and may not be stored separately from the machine. Save it for later reference and if you let other persons use the machine, add this instruction to the machine.

Please read and obey the security instructions!



Before first use read this manual carefully. It eases the correct use of the machine and prevents misunderstanding and damages of machine and the user's health.

Due to constant advancements in product design and construction pictures and content may diverse slightly. However, if you discover any errors, inform us please with the product feedback form.

Technical specifications are subject to changes!

Copyright

© 2010

This document is protected by international copyright law. Any unauthorized duplication, translation or use of pictures, illustrations or text of this manual will be pursued by law – court of jurisdiction is A-4020 Linz, Austria!

Customer Service Contacts

HOLZMANN MASCHINEN GmbH

A-4170 Haslach, Marktplatz 4

Tel 0043 7289 71562 - 0

Fax 0043 7289 71562 – 4

info@holzmann-maschinen.at

1 SECURITY

Fields of application

The machine shall be used only in good technical condition. Defects have to be resolved immediately. It is forbidden to change any parameters on the machine without prior written permission by us.

The BS 125M mobile metal band saw is designed for cutting

Tool-steel

Steel

Stainless steel

Bronze

Iron

Aluminium, copper

within the dimensional borders stated in this manual and within the performance frame of this machine.

Misuse

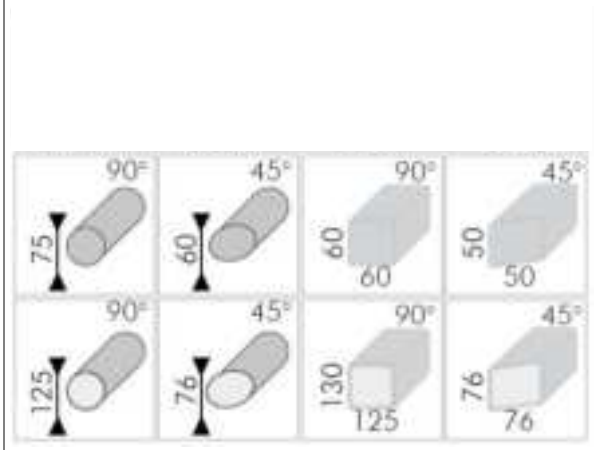
- DO NOT USE THE METAL BAND SAW TO CUT ANY OTHER MATERIAL.
- Do not operate the machine outside the stated technical restrictions laid down in this manual.
- Do not overload/overstress the machine.
- Do not dismount the saw blade cover.
- Do not manipulate the machine.

HOLZMANN MASCHINEN CAN NOT BE HELD LIABLE FOR ANY DAMAGES TO MACHINE AND HEALTH RESULTING FROM MISUSE AN/ OR NOT FOLLOWING THE SECURITY, OPERATION AND MAINTENANCE INSTRUCTIONS IN THIS MANUAL.

2 TECHNICAL DATA

Motor output performance S1 (100%)	kW	0.4
Voltage/ ~	V/Hz	230/50
Engine speed	U/min	2000-4000 continuous
Band saw blade feed rate	m/min	35-80 continuous
Blade length	mm	1435
tilt	°	0-60
Net/gross weight	kg	22/24
Sound pressure level L _{PFA}	dB	77
Sound level L _{WA}	dB	90

Cutting capacities:



3 MACHINE DESCRIPTION

1	Feeding handle with starter button
2	On/OFF button
3	Speed governor knob
4	Clamping lever
5	Workpiece stop
6	vice
7	Saw blade guide
8	Vice Clamping lever
9	Blade tension knob

4 ELECTRIC CONNECTION

The machine may be connected solely to a circuit with short circuit protection.

The power socket must match with the power plug of the machine. If it does not, let the power plug be adapted by a qualified electrician.

The power plug must be grounded/earthed.

If you are not sure, that all these prerequisites are fulfilled, let the power circuit, -plug and -socket be checked by a qualified electrician.

! WARNING



Operating a non-grounded/earthed machine inhibits the risk of ELECTROCUTION!

-which may lead to severe injuries and even death!

5 OPERATION

! ATTENTION



Prior to any checks or adjustments disconnect the machine from the power supply!

This prevents the risk of accidental start-up.

Before first use:

Remove the thin corrosion-prevention layer from the not-painted machine parts.

Do not use Nitrite-Solvents or other aggressive solvents. Do not use water.

The use of thinners, gasoline aggressive Chemicals or abrasives destroys the surface and leads to fastened corrosion later on.

Prior to every usage:

Check the machine for loose or missing screws, for damaged parts, check the condition of the saw blade

Assure yourself, that all tools etc.. apart from the workpiece itself are removed from the machine!

Perform a cut

Loosen the clamping lever(4) and swing the saw arm to the desired angle. Tighten the clamping lever again to fasten the saw arm in the chosen position.

Swing the saw arm into the upmost position.

Place the workpiece according to the desired cutting line and fix it with the vice

Loosen the saw blade guide (7) and move it approx. 2cm near the workpiece.

Für cutting workpieces of same length, adjust the workpiece stop (5) accordingly.

Now adjust the speed governor (3) to the desired feed rate.

Press the green button (2).

Take the feeding handle (1) and press the start button on it. Wait until the blade reaches its full speed.

Perform the cut. You should adjust the feed dependent from the material.

Stainless steel, bronze: very slow feed

Steel, brass: slow feed

Aluminium: moderate feed

MAINTENANCE



ATTENTION

Don't clean or do maintenance on the machine while connected to the power supply:

Damages to machine and injuries might occur due to unintended switching on of the machine!

The machine requires barely no maintenance.

However, if malfunctions and defects occur, let them be serviced by trained persons only.

Clean your machine regularly after every usage—it prolongs the machines lifespan and is a prerequisite for a safe working environment .

Before first operation as well as later on every 100 operation hours you should lubricate al connecting part (if required, remove beforehand with a brush all swarfs and dust).

Check regularly the condition of the security stickers. Replace them if required..

Check regularly the condition of the guiding rollers of the saw blade. The good condition and perfect adjusting of the guiding rollers is essential for a smooth band saw transport and a clean cut.

Store the machine in a closed, dry location. Do not expose it to high levels of humidity.

Maintenance and servicing plan

Check for loose or lost screws	Prior to operation
Check for damages of any machine part	Prior to operation
Clean machine	After operation
Lubricate all moving parts (esp. Gear box)	After first 10 operating hours, later every 3 months
Adjust guiding rollers	Every month



WARNING

Wait until band stop and saw arm in upper position before removing the cut workpiece and/ or placing a new workpiece into the vice.

INFORMATION

If you do not use anymore the band saw the same day, loosen the saw blade with the knob(9) a bit.

Cleaning

Clean the machine from dust and metal swarfs with a wet cloth.

Apply a thin layer of corrosion protection onto the non-painted surfaces.

ADVICE



The usage of solvents, aggressive chemicals or abrasives damages the surface!

Saw blade change

ALWAYS WEAR SECURITY GLOVES WHEN TOUCHING THE SAW BLADE

Swing the saw arm entirely up.

Remove the 6 screws off the saw arm cover and remove the cover.

Loosen with the belt tension knob (9) the band saw blade.

Now you can easily remove the saw blade.

Install the new saw blade. Place attention to install it into the right direction (teeth!)

Spin the blade wheel slowly until it runs smoothly on the blade wheels.

Now tighten the blade with the blade tension Knob (9).

Spin the blade wheel again and check, if the blade is running straight.

Mount the saw arm cover back.

Adjust guiding rollers

The band saw blade is guided by rollers (7)

The bearings of the rollers are factory-set.

If you notice bad cutting results due to instable band run, the rollers might be responsible for that.

You can adjust the band run by loosening the tightening screws of the rollers and adjust the rollers.

Replace the bearings of the saw blade guide rollers at least once a year.

TROUBLESHOOTING

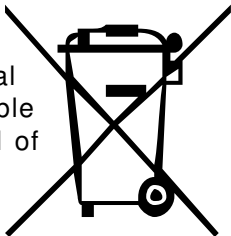
Disconnect the machine from the power source before you start to perform any checks or repairs.

Error	Possible cause	resolution
Machine does not start	<ul style="list-style-type: none"> Machine is not connected to power source Fuse defect, safety fuse deactivated Cable defect 	<p>Check the power source</p> <p>Change fuse, activate fuse</p> <p>Exchange cable</p>
Saw Blade does not reach full speed	<ul style="list-style-type: none"> Motor has not full power 	<p>Check if extension cord too long – replace.</p> <p>Let by electrician check if motor receives power through all 3 PH, if power supply suitable for machine.</p>
Machine vibrates strongly	<ul style="list-style-type: none"> Uneven underground Motor mounting is loose. Saw blade tension spring is worn or defect. 	<p>adjust</p> <p>Tighten</p> <p>replace</p>
Bad cutting results	<ul style="list-style-type: none"> To fast feeding rate Saw blade is running to loose Saw blade is worn False saw blade for material Guiding rollers 	<p>Lower the saw arm slower</p> <p>Tighten it a bit more with (9)</p> <p>Replace</p> <p>Use correct saw blade (material, number of teeth)</p> <p>readjust</p>

DISPOSAL

Do not dispose your BS 125M with domestic waste. Inform yourself at your local authorities about the available possibilities of proper disposal of machinery.

In many countries your reseller is obliged to take back your old machine for disposal if you buy a new machine with similar function at his shop.



SPARE PARTS

With original spare parts of HOLZMANN-Maschinen you have spare parts at hand that fit together and prolong the machines lifespan.

IMPORTANT

The use of non-original spare parts renders subsequent guarantee claims null and void!

Use only original spare parts.

You find the spare part list at the end of this documentation.

When ordering spare parts indicate:

Serial number (see typeplate)

Part. No°

Please send us a copy of the spare part drawing with the required spare parts being marked.

[You find the order address at the beginning of this documentation.](#)

WARRANTY

We grant you 1 year manufacturer warranty.

For guarantee claims please contact your HOLZMANN vendor where you bought the machine with the original / or copy of payment receipt

Your HOLZMANN vendor processes the guarantee for you and assists you in all stages, from problem detection to spare part order and assembly.

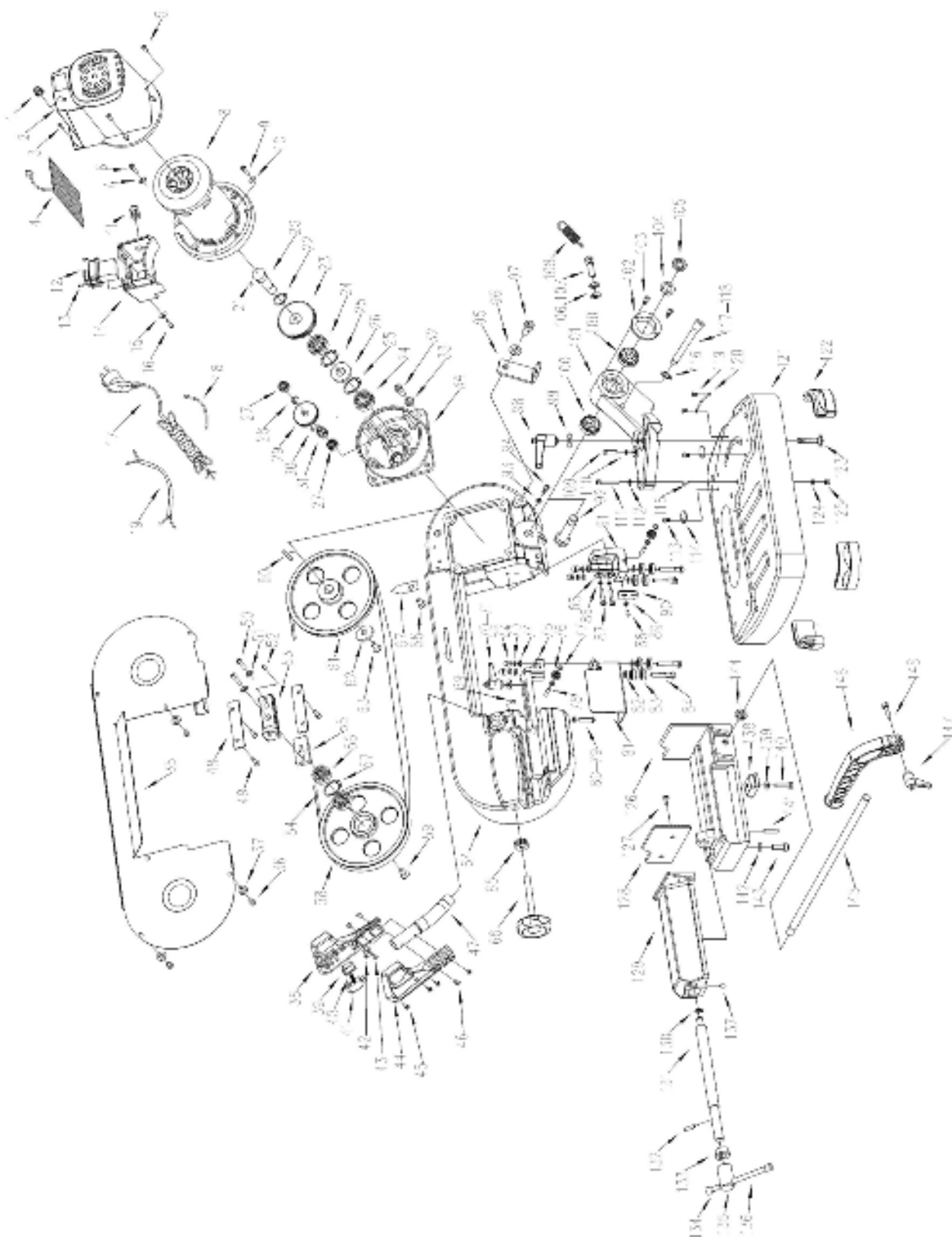
Warranty exclusion:

HOLZMANN Maschinen cannot be held responsible for any damages resulting from
inadequate handling,
machine overstressing,
inadequate or insufficient maintenance,
insufficiencies in the power supply,
manipulations of the machine.


Wearing parts (such as belts, blades etc ...) are generally excluded from Warranty.

Holzmann can only accept claims on transport damage if indicated on the freight document.

Missing parts can only be claimed within 1 week after buy.

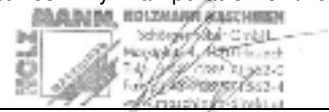


KONFORMITÄTSERKLÄRUNG / CERTIFICATE OF CONFORMITY

	Inverkehrbringer / Distributor HOLZMANN MASCHINEN® AUSTRIA Schörgenhuber GmbH A-4170 Haslach, Marktplatz 4 Tel.: +43/ 7289/ 71562-0; Fax.: +43/ 7289/ 71562-4 www.holzmann-maschinen.at
Bezeichnung / Name	
Mobile Metallbandsäge / mobile metal bandsaw	
Type(n) / Model(s)	
Holzmann BS 125M (GFW4013) / 230VAC / 50Hz / I / IP20	
EG-Richtlinie(n) / EC-Directive(s)	
Maschinenrichtlinie / Machinery Directive 2006/42/EC Richtlinie elektromagn. Verträgl. / EMC Directive 2004/108/EC Niederspannungsrichtlinie / LVD 2006/95/EC	
Berichtsnummer(n) / Test Report Number(s)	
704030930403-00 708880930403-00 704030930403-00	
Registrierungsnummer(n) / Registration Number(s)	
M8T 09 09 28954 014 E8N 09 09 28954 016 N8 09 09 28954 013	
angewandte harmonisierte Normen / applied harmonized Norms	
EN 61029-1:2009 EN ISO 12100-2/A1:2009 EN 55014-1:2006 EN 55014-2/A1:2001 EN 61000-3-2:2006 EN 61000-3-3/A2:2005 EN 61029-1:2009 EN ISO 12100-2/A1:2009	
Ausstellungsdatum / Issuing Date	
2009-10-09 2009-09-30 2009-10-09	
Ausstellungsbehörde / Issuing Authority	
TÜV Süd Product Service GmbH ■ Ridlerstraße 65 ■ 80339 München ■ Deutschland	

Hiermit erklären wir, dass genannte(n) Maschine(n) den oben genannten Sicherheits- und Gesundheitsrichtlinien der EG entsprechen. Diese Erklärung verliert ihre Gültigkeit, wenn Veränderungen an der Maschine vorgenommen werden, die nicht mit uns abgestimmt wurden.

Hereby we declare that the mentioned machine(s) fulfil(s) the above stated EC-Directives. Any manipulation of the machine(s) not authorized by us renders this document invalid.



	Haslach, 19.12.2011			Klaus Schörgenhuber, CEO
	Ort/place, Datum/date			Unterschrift / sign

PRODUKTBEOBACHTUNG / PRODUCT EXPERIENCE FORM

Wir beobachten unsere Produkte auch nach der Auslieferung.

Um einen ständigen Verbesserungsprozess gewährleisten zu können, sind wir von Ihnen und Ihren Eindrücken beim Umgang mit unseren Produkten abhängig.

- Probleme, die beim Gebrauch des Produktes auftreten
- Fehlfunktionen, die in bestimmten Betriebssituationen auftreten
- Erfahrungen, die für andere Benutzer wichtig sein können

Wir bitten Sie, derartige Beobachtungen zu notieren und per E-Mail, Post oder Fax an uns zu senden:

Vielen Dank für Ihre Mithilfe!

We observe the quality of our delivered products in the frame of a Quality Management policy.

Your opinion is essential for further product development and product choice. Please let us know about your impressions, suggestions for improvement, experiences that may be useful for other users and for product design and about malfunctions that occur in specific operation modes.

We would like to ask you to note down your experiences and observations and send them to us via FAX, E-Mail or by post:

Thank you for your cooperation!

HOLZMANN MASCHINEN

Schörgenhuber GmbH

A-4170 Haslach, Marktplatz 4

Tel 0043 7289 71562 - 0

Fax 0043 7289 71562 - 4

info@holzmann-maschinen.at