

**Operation manual of  
fingerprint password lock  
(T8\T6)**

# catalog

---

Part 1: Fingerprint password lock	
terminal operation instructions .....	1
Language switch: .....	2
Anti-lock function: .....	2
Add fingerprint: .....	2
Add password: .....	3
Delete all fingerprints, passwords and Bluetooth data: .....	3
Normally open mode: .....	4
Low voltage: .....	4
Auxiliary function: .....	5
Part II: Tuya APP Operation Instructions .....	7
APP installation .....	7
Distribution network connection loc .....	7
Add device: .....	8
Member management .....	8
Family member: .....	8
Other members: .....	9
Add unlock method .....	9
The second method is described below .....	10
dynamic password .....	11
Factory reset and unbind .....	12
Tuya Operation FAQ: .....	12

## Fingerprint password lock instruction manual

### Part 1: Fingerprint password lock terminal operation instructions

The first three password users and the first three fingerprint users registered after the machine is initialized are the administrators. For example, the administrator has been registered in the fingerprint password lock. To add and delete users again, you need to verify the administrator first;

When the fingerprint is not entered, any fingerprint and the initial password “123456” can be unlocked. After registering the fingerprint or password, the illegal fingerprint and password will not be able to unlock;

If the fingerprint password lock is bound to the mobile phone Tuya APP, the lock can be unlocked through the APP operation. Illegal fingerprints and passwords will not be able to unlock;

After leaving the factory, the device will not turn on the Bluetooth configuration mode before the fingerprint or password is entered. At this time, the fingerprint password lock device cannot be searched with the Tuya APP. After entering the management fingerprint or password, please press any key or fingerprint to wake up the system, and the Bluetooth network configuration mode will be turned on for 1 minute. At this time, you can search for this fingerprint password lock through the Tuya APP manual or automatic search function; after 1 minute If the device is not connected, the network distribution mode will be automatically closed;

The fingerprint lock can enter up to 50 fingerprints and 100 unlock password;

After the fingerprint lock is restored to factory settings, the default is the English version, please follow the operation below to switch the Chinese version.

### Language switch:

Press any key to wake up the system, press "8899" + "#" key, the blue light of the fingerprint light flashes, and the voice prompts "Please verify the administrator" (if no fingerprint or password has been entered, use any fingerprint or the default password "123456" verify). If the verification is successful, the green light will be on for 1 second, and the corresponding language "Chinese, (English)" will be prompted by voice, that is, the switch is successful.

### Anti-lock function: (only with double tongue lock body)

After successfully verifying the fingerprint or password, lift up the handle to lock it.

### Add fingerprint:

1、Press any key to wake up the system, press the "1" + "#" key, the blue light of the fingerprint light flashes, and the voice prompt "Please verify the administrator" (if no fingerprint or password has been entered, use any fingerprint or the default password "123456" verify). After the verification is successful, the fingerprint entry starts, and the voice prompt "Please start entry", touch and press the finger you want to set at the center of the fingerprint. If the fingerprint data is successfully collected, the green light will flash once, and the voice prompt "please enter again", and the red light will flash once the collection fails. A total of 5 valid fingerprints need to be collected. After the 5 collections are completed, the green light will be on and the voice prompt will be displayed. Entry is successful", it means that adding fingerprints is complete. The touched finger requires multi-angle collection, which is beneficial to the expansion of the database and helpful to the sensitivity of recognition! The first three fingerprints and the first three sets of passwords entered are for the administrator.

2、Press the reset button on the rear handle (the small hole next to the button) for 1 second to quickly add users, repeat step 1 to start fingerprint entry.

### Add password:

1、Press any key to wake up the system, press the "1" + "#" key, the blue light of the fingerprint light flashes, and the voice prompt "Please verify the administrator" (if no fingerprint or password has been entered, use any fingerprint or the default password "123456" verify). After the verification is successful, the password entry will start, the voice prompt "Please start entry", start to enter the password you want to set (support 6 to 12 digits password length) and press the # key to end. If the password data is successfully collected and the length is valid, the green light flashes once and the voice prompt "Please enter the password again". If this collection is invalid, the red light will flash once and the voice prompt "Please re-enter". After the input is completed, press the "#" key to confirm the password you just entered; the voice prompt "Password set successfully" indicates that the password is added. The password entry needs to be entered twice.

2、Press the reset button on the rear handle (the small hole next to the button) for 1 second to quickly add users, repeat step 1 to start password entry.

### Delete all fingerprints, passwords and Bluetooth data:

1、Press any key to wake up the system, press the "888" + "#" key, the fingerprint light flashes in red, and the voice prompts "Please verify the administrator" (if no fingerprint or password has been entered, use any fingerprint or the default password "123456" verify). If the verification is successful, the factory settings will be restored. The restoration is successful, the green light will be on for 1 second, and

the voice prompt "factory settings restored successfully", all fingerprints, passwords and Bluetooth data will be deleted.

2、To force reset to factory settings, press and hold the reset button on the handle for 8 seconds, the fingerprint light flashes in red, release it, the light turns green, and the voice prompt "Restore to factory settings succeeded", indicating that the factory settings are restored successfully.

#### Normally open mode:

1、Press any key to wake up the system, press the "28" + "#" key, the fingerprint light will flash in purple, and the voice prompt "Please verify the administrator" (if no fingerprint or password has been entered, use any fingerprint or the default password "123456" verify). The verification is successful, the green light is on for 1 second, and the corresponding language "normally open mode" is prompted by voice, that is, the setting is successful. Repeated operations can be switched to normally open mode or automatically locked. After entering the normally open mode, press a valid fingerprint to release the normally open mode, and the voice prompt "cancel normally open mode".

2、Press the normally open button on the handle for 1 second, the purple light of the fingerprint light flashes, release it, and the voice prompts the corresponding language "normally open mode" or "cancel normally open mode".

3、To close the door lock in the normally open mode, press any button to wake up the system, press the "#" key to close the lock, or press the entered fingerprint or password verification to execute the lock, and the normally open mode is automatically closed.

**Low voltage:** When the voltage is lower than 4.5V, the red indicator light will flash 3 times continuously. It also prompts "low battery" and the lock can continue to be unlocked. When the voltage is lower than 4.2V, the red indicator light will continue to flash 3 times quickly and the lock cannot be unlocked.

#### Auxiliary function:

1、The product is equipped with anti-peeping function: when entering the password, you can add any number of garbled codes before or after the valid password, and the door can still be opened. The total length of the entered password cannot be greater than 12 digits;

2、Long press the "#" key for 3 seconds to exit the menu and enter the off-screen sleep state.

#### RGB three-color LED status list

mode	Red LED indication	Green LED indication	Blue LED indication	Remark
Add fingerprint	Failure, short light 2 times, voice prompt "Entry failed, please re-enter"	Flashing once means the entry is successful; after 6 consecutive additions, the green light will be on and the message "entry successful" will be displayed.	Long time on, waiting for administrator verification, flashing, fingerprint registration status	
Add password	Failure, the light flashes 2 times, prompting "password invalid"	The light flashes, and the password is valid. When prompted "please enter again", you need to enter it again; after a set of passwords are entered successfully, the voice prompts "entry successful"		

Clear fingerprint and password	Deletion failed, flashing 2 times	Successfully deleted: the green light is on, and the voice prompt "restore to factory settings successful"		
Fingerprint unlock	Unlock failure, the light will be on for 2 times, and the voice prompt "fingerprint error"	When unlocking is successful, the light will be on shortly, and the voice prompt "Unlocked"		If the fingerprint is successfully pressed, the motor will be unlocked when it rotates clockwise, and the motor will automatically lock when it rotates in the reverse direction
Password unlock	If unlocking fails, the light will be on for 2 times, and the voice prompt "password error"	When unlocking is successful, the light will be on shortly, and the "voice prompt" has been unlocked		After the password comparison is successful, the motor is rotating forward to unlock, and the motor is reversed to automatically lock back
Low pressure prompt	5 consecutive flashes			Any fingerprint operation

## Part II: Tuya APP Operation Instructions

### APP installation

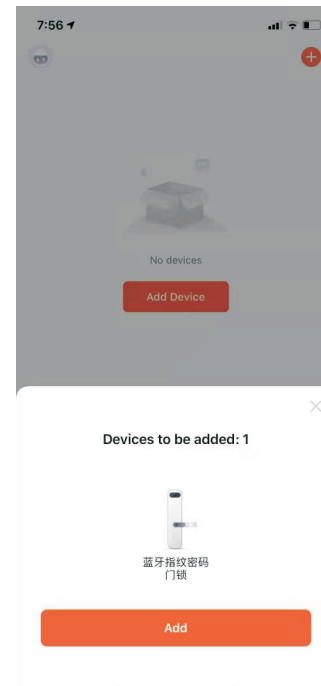
Download and install the "Tuya Smart" APP from the app market.

After installation, follow the prompts to register and log in.

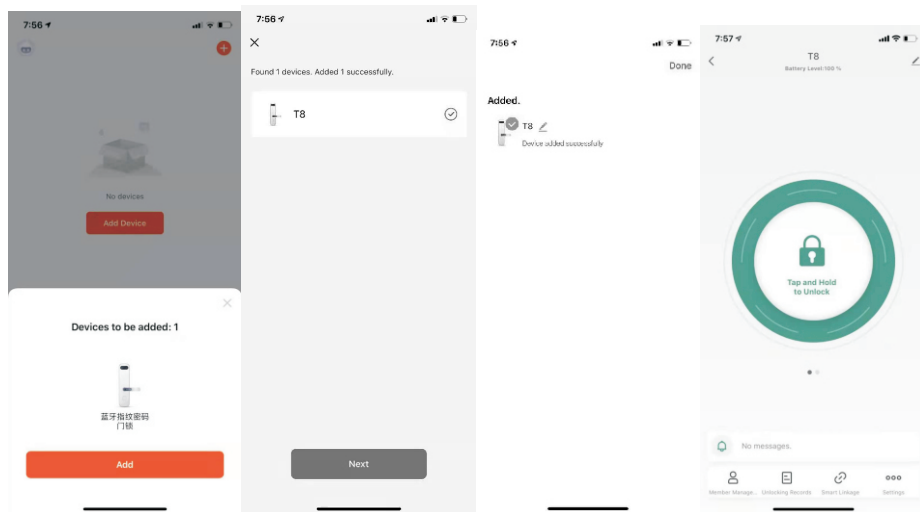
### Distribution network connection lock

Start the distribution network process: If no fingerprint or password is entered, press any button or fingerprint to enter the network distribution mode. If the fingerprint or password has been entered, the machine will automatically enter the network distribution mode;

Open the APP, you can add devices through the manual and automatic discovery windows. After the device enters the network configuration mode, the APP will automatically pop up the device discovery window. No display if multiple operations. Please press the fingerprint or password key once to wake up the fingerprint and password lock device, and let the device turn on the Bluetooth broadcast. For details, please refer to "Graffiti Operation FAQ";

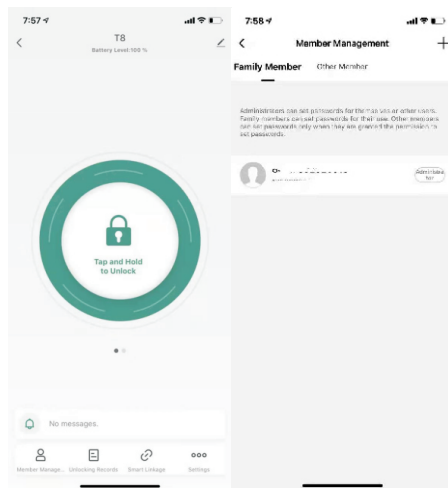


## Add device:

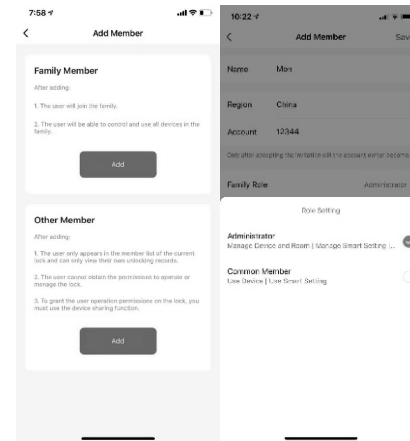


## Member management

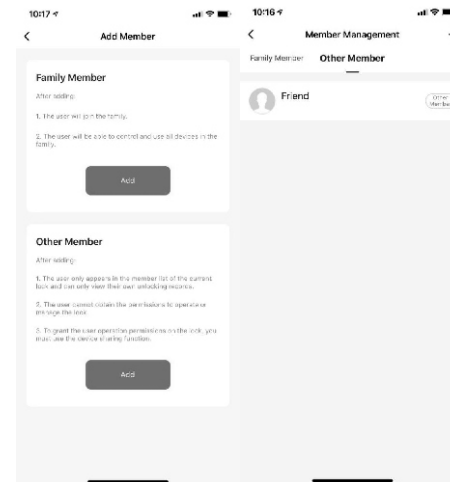
Click "Member Management"



**Family member:** The family member added for the first time is the administrator, click "+" in the upper right



Other members: Click the "+" in the upper right



## Add unlock method

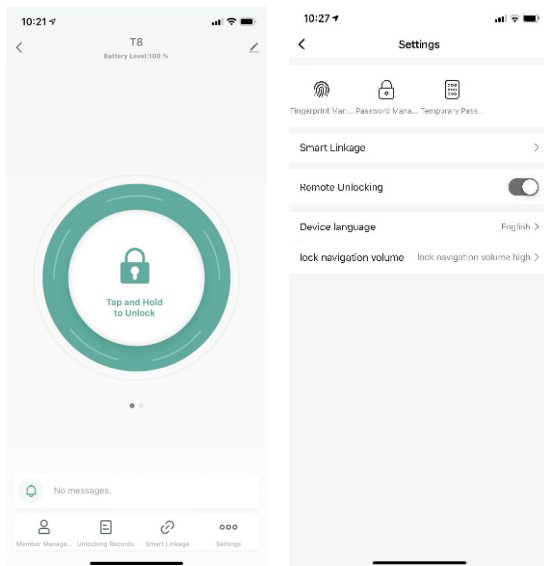
The first method: You can directly add fingerprints and passwords on the specific user interface under "Member Management";

The second method: add in the settings interface;

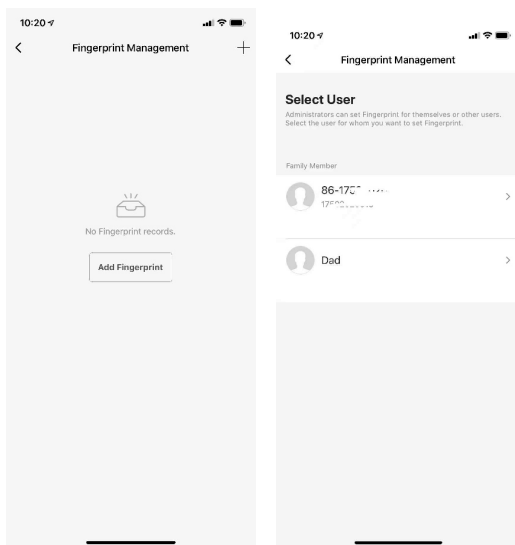
The difference between these two methods: The first is to add unlocking methods (such as fingerprints, passwords) for a user;

The second is to correspond to a certain user under the specific unlocking method (such as fingerprint, password);

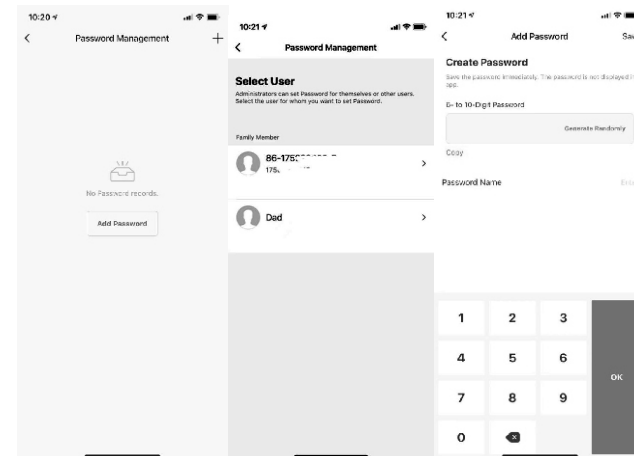
The second method is described below



Fingerprint management: Add fingerprints, select users, and follow the prompts to enter



Password management:

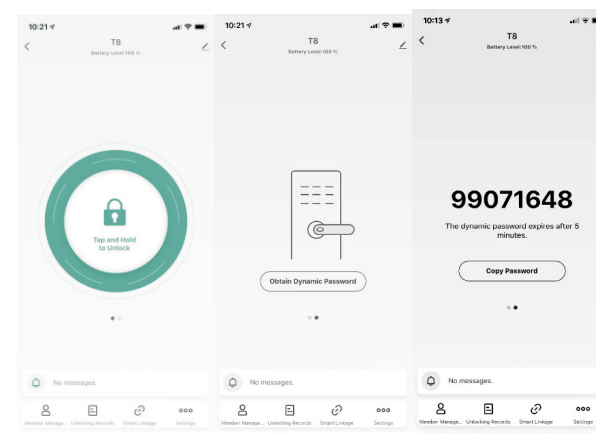


**Add password:** The password can be randomly generated or input by the user. For the specific number of digits, please refer to "Tuya Operation FAQ"

dynamic password

This function only supports the lock body with touch code.

The dynamic password operation process is as follows:

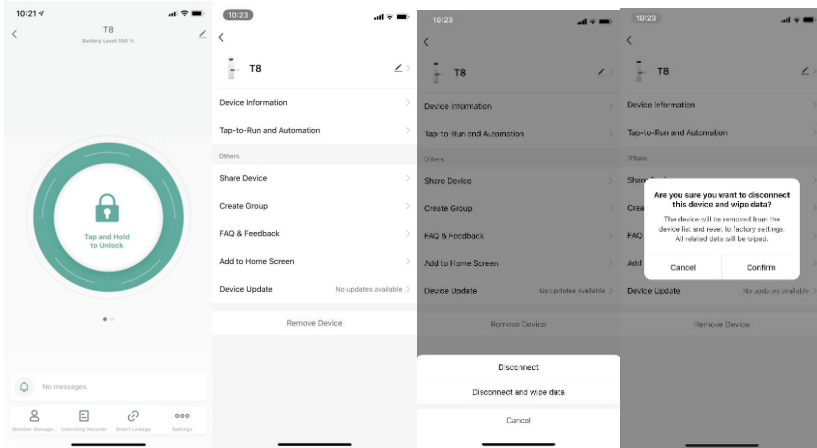


Swipe left on interface 1; enter interface 2; click "Get dynamic password" on interface 2; generate a dynamic password; enter the password at the fingerprint password lock end to unlock.



## Factory reset and unbind

### Unbinding on the APP side



On the fourth interface, click "Unbind and clear data" to unbind and clear data.

If the APP is not connected to the lock body, it can also be remotely operated to unbind. After the device is searched by Tuya APP next time, the device will be restored to factory settings.

### Tuya Operation FAQ:

Unlocking method: fingerprint unlocking, password unlocking, Tuya APP unlocking;

A user can have multiple unlocking methods, and in this unlocking method, there can be multiple unlocking implementations. For example, Zhang San can unlock with fingerprints, passwords, and cards, and there are 50 fingerprints and 100 passwords.

Fingerprint password lock when fingerprint or password is not registered. The device will not turn on the Bluetooth network configuration mode. Before connecting the Tuya APP, you need to press the fingerprint or password first, then the device wakes up and turns on the network configuration mode for 1 minute;

After the lock body is restored to factory settings, all data in the device will be cleared;

Support virtual password function;

The first three fingerprints and passwords entered for the first time are administrator rights;

The number of touch keys is related to the number of digits of the user password: if there are 10 digital keys (0-9) for the touch code of the machine, the number of digits of the user password is 6-12 digits;

The dynamic password generated by the APP has 6-12 digits, and the user can directly enter it at the lock end to unlock;