

1 Appearance

1 Screen

2 Microphone

3 Debugging Port

4 Network Interface

5 Loudspeaker

6 TF Card Slot

7 Alarm Terminal

8 Reserved

9 Power Terminal

Note:

The appearance of the device varies according to different models. Refers to the actual device for detailed information.

The debugging port is used for debugging only.

2 Terminal and Wiring

There are 20 pins in the terminal on the rear panel of the indoor station: 2 RS-485 pins, 5 reserved pins, 4 relay output pins, 8 alarm input pins, and 1 GND pin.

Note: There are 20 pins in the terminal on the rear panel of the DS-KH6320-TE1: 11 reserved pins, 8 alarm input pins, and 1 GND pin. Please refer to the specific model.

3 Installation

It supports wall mounting. There are two installation modes.

Installation Accessory Description

The wall mounting plate and junction box are required to install the indoor station onto the wall.

The dimension of junction box should be 75 mm (width) × 75 mm (length) × 50 mm (depth). The dimension of wall mounting plate is shown.

Before You Start

Make sure the device in the package is in good condition and all the assembly parts are included.

The power supply the indoor station supports is 12 VDC. Please make sure your power supply matches your indoor station.

Make sure all related equipments are power-off during the installation.

Check the product specification for the installation environment.

★Wall Mounting with junction Box

Chisel a hole in the wall. The size of the hole should be 76 mm (width) × 76 mm (length) × 50 mm (depth).

Insert the junction box to the hole chiseled on the wall.

Fix the wall mounting plate to the junction box with 2 screws.

Hook the indoor station to the wall mounting plate tightly by inserting the plate hooks into the slots on the rear panel of the indoor station, during which the lock catch will be locked automatically.

★Wall Mounting without junction Box

Insert 2 expansion tubes into the wall.

Fix the wall mounting plate to the junction box with 2 screws.

Hook the indoor station to the wall mounting plate tightly by inserting the plate hooks into the slots on the rear panel of the indoor station, during which the lock catch will be locked automatically.

4 Getting Started

1 Activate Indoor Station

You are required to activate the device first by set t i ngs a strong password before you can use the device.

Power on the device. It will enter the activation page automatically.

Create a password and confirm it.

Tap OK to activate the indoor station.

2 Quick Configuration

Choose Language and tap Next.

Set network parameters and tap Next.

Edit Local IP, Subnet Mask and Gateway parameters.

Enable DHCP, the device will get network parameters automatically.

Configure the indoor station parameters.

Select Indoor Station and tap Next to link main door station.

Edit Floor and Room No.

Create and confirm SIP register password.

c. Tap Advanced Settings to edit Community No, Building No. and Unit No.

d. Optional: Enable Indoor Station Settings and select the indoor station to link.

Select Indoor Extension and tap Next to link indoor station.

Edit No., Room Name.

Create and confirm SIP register password.

4. Linked related devices and tap Next. If the device and the indoor station are in the same LAN, the device will be displayed in the list. Tap the device or enter the serial No. to link.

Tap the settings icon to pop up the Network Settings page.

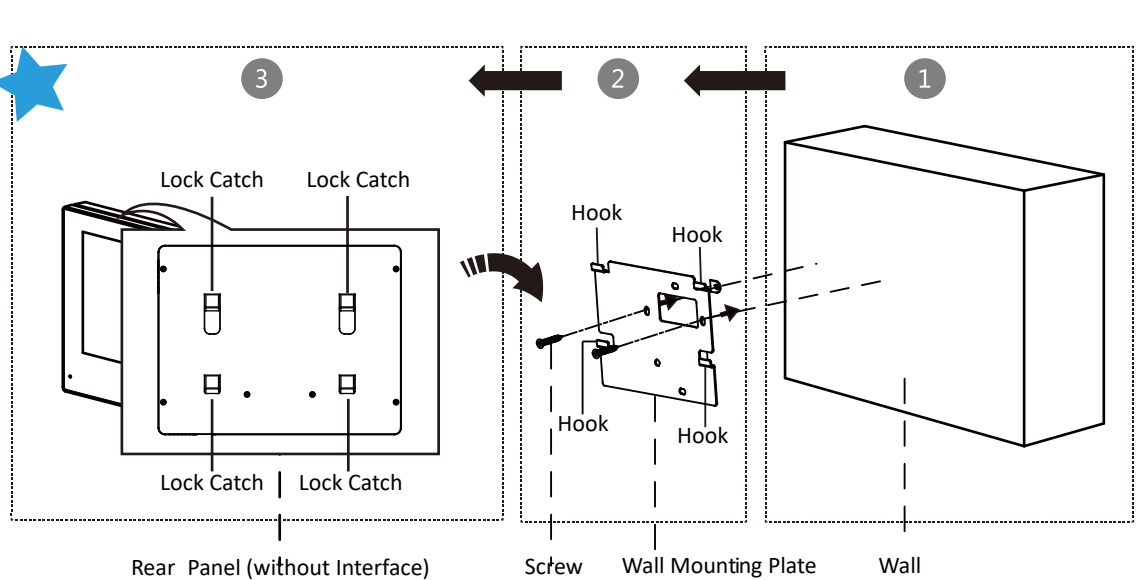
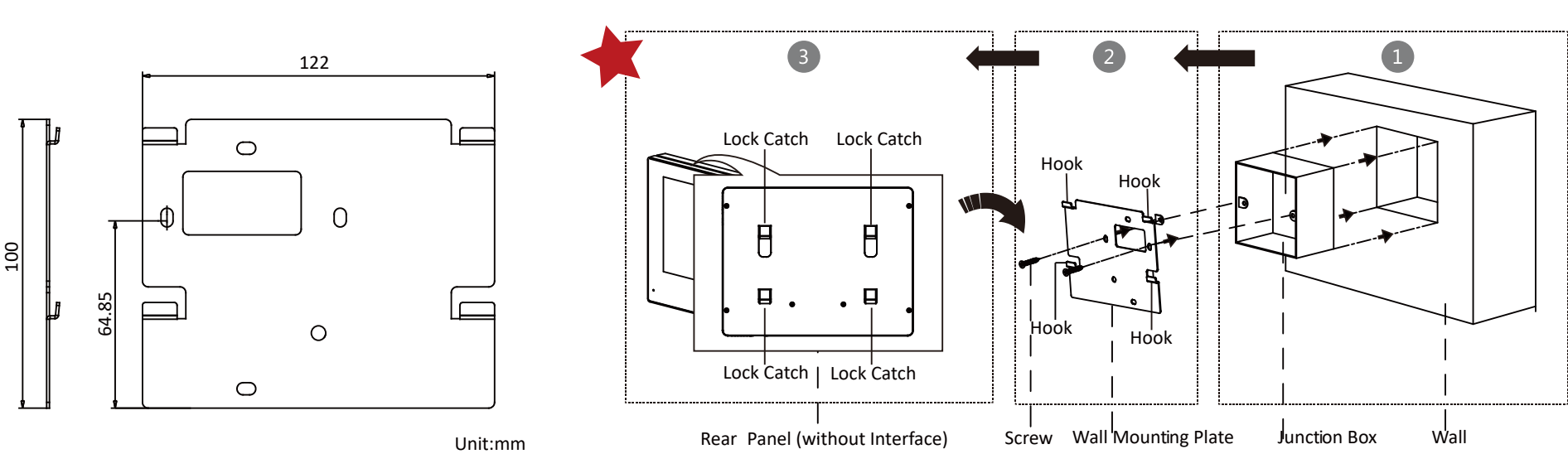
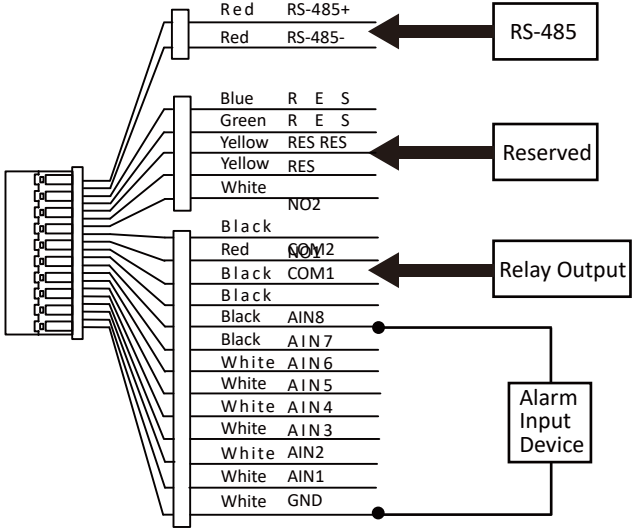
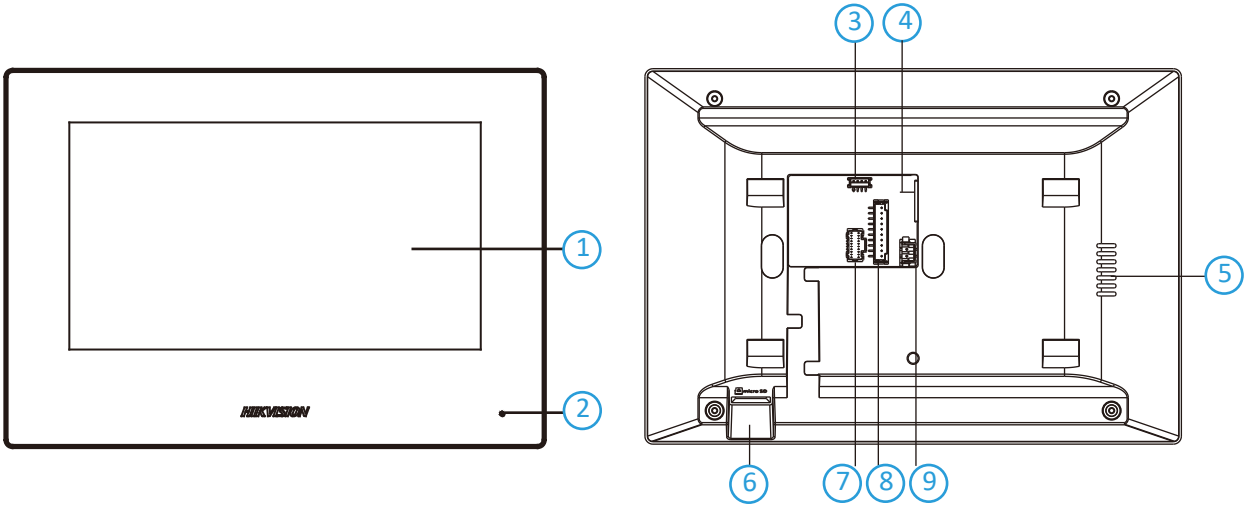
Edit the network parameters of the door station manually or enable DHCP to get the network parameters automatically.

Tap OK to save the settings.

5. Tap Finish to save the settings.

Refers to Video Intercom Network Indoor Station Configuration Guide (Scan the QR code) for details.

Refers to Video Intercom Network Indoor Station Operation Guide (Scan the QR code) for details.



Scan the QR code to get the User Manual for detailed information.



## DS-KH6320-WTE1 Network Indoor Station



The KH6 series IP indoor station, with 7-inch touch screen, brings you a fluent video and audio communication. By considering the difficulty of deployment of the traditional video intercom, the device has improved the design and can deploy the whole video intercom system by itself independently, without extra devices or configurations, which reduces the deployment time and cost. You can view, chat with, and send permission for the visitor via mobile phone in anywhere. The device can also link other control systems, such as CCTV system, elevator control system, etc.

- 7-inch TFT touch screen with 1024 × 600 resolution
- Convenient Hik-Connect APP Mobile Control
- Receive calls, open the door and live view remotely
- Easy to use without PC
- Easy wizard for quick set up
- Configure the whole system on one touch screen
- Live view of the door station and cameras in public areas
- Support voice messages when no response from the indoor station
- Receive alarms by linkage with a alarm system and notify the center to handle in time
- Elevator access control

## ▪ Specification

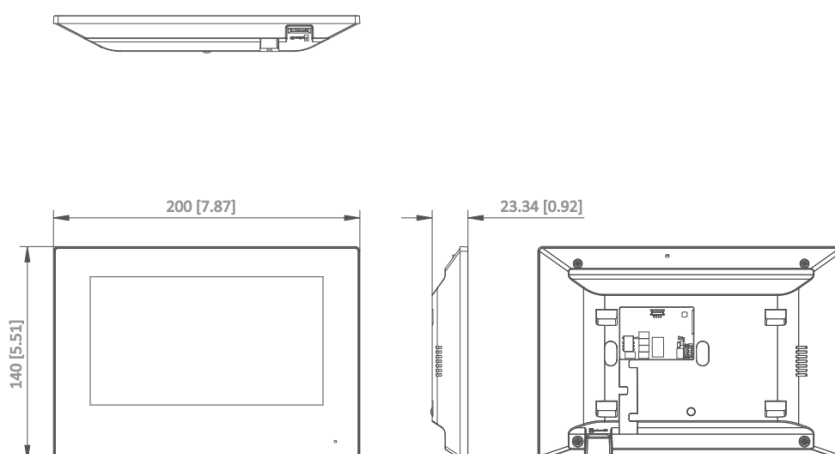
System parameters	
Operation system	Linux
ROM	32 MB
RAM	128 MB
Processor	Embedded high performance processor
Display parameters	
Screen size	7-inch
Operation method	Capacitive touch screen
Type	Colorful TFT
Resolution	1024 × 600
Video parameters	
Lens	/
Resolution	/
FOV	/
Wide dynamic range (WDR)	/
Video compression standard	/
Focal length	/
Audio parameters	
Audio input	1 built-in omnidirectional microphone
Audio compression standard	G.711U/G.711A
Audio output	1 built-in loudspeaker
Audio compression bitrate	64 Kbps
Audio quality	Noise suppression and echo cancellation
Volume adjustment	Adjustable
Capacity	
Message capacity	TF card inserted: 200 captured pictures, 200 alarm records Without TF card: 2 MB RAM for picture storage; The storage number is decided by the picture size, 200 alarm records
Notice capacity	200
Linked indoor extensions capacity	16
Linked doorphone capacity	17
Linked network camera capacity	16
Network parameters	
Network protocol	TCP/IP, SIP, RTSP
Wi-Fi	2.4 GHz, IEEE802.11b, IEEE802.11g, IEEE802.11n
Bluetooth	/
3G/4G	/
Zigbee	/
Device interfaces	
Alarm input	8
Network interface	1 RJ-45 10/100 Mbps self-adaptive
TAMPER	/

RS-485	1 RS-485 (Half duplex)
USB	/
TF card	Support TF card, up to 128 G
Alarm output	2
Lock control	2 relays, Max. 30 VDC 0.3 A
<b>General</b>	
Button	/
Installation	Surface mounting
Indicator	/
Weight	Net weight: 355 g (0.8 lb) Gross weight: 683 g (1.5 lb)
Protective level	/
Working temperature	-10 °C to 55 °C (14 °F to 131 °F)
Working humidity	10% to 90% (no-condensing)
Dimension (W × H × D)	200 mm × 140 mm × 15.1 mm (7.9" × 5.5" × 0.6")
Battery	/
Application environment	Indoor
Power consumption	≤ 5 W
Language	English, Russian, Bulgarian, Hungarian, Greek, German, Italian, Czech, Slovak, French, Polish, Dutch, Portuguese (Brazil), Spanish, Hebrew, Romanian, Turkish, Estonian, Danish, Swedish, Norwegian, Finnish, Vietnamese, Croatian, Slovenian, Serbian, Arabic, Portuguese (Portugal), Lithuanian, Uzbek, Kazakh, Mongolian, Ukrainian

## ▪ Available Model

DS-KH6320-WTE1

## ▪ Dimension



Unit:mm [inch]

SCALE 1:1

▪ **Accessory**

▪ **Optional**

DS-KAW50-1 50W 12V Power Adapter	DS-KABH6320-T Indoor Station Table Bracket	DS-KAW50-1N 50W 12V Power Adapter
		