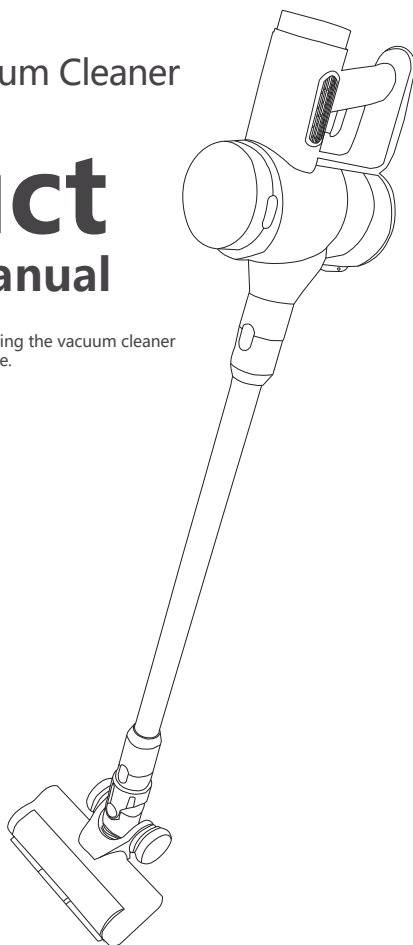


Redkey

P8 Cordless Vacuum Cleaner

Product Instruction Manual

Please read the manual carefully before using the vacuum cleaner and keep it in case you need it in the future.



Preface

Thank you for your trust in the Junion brand and for purchasing our cordless vacuum cleaners. Hope you have a great time with our product! Please read this instruction manual carefully to fully understand the operating performance of this product. We have ownership rights to revisions and modifications to this manual. Our company's strategy is to continually upgrade our products to meet our customers' needs, so we reserve the right to change our products after printing without notice. If there is any problem or malfunction with our products, please feel free to contact customer service.

Catalog

Special Declaration	1
Guidelines for Safe Use	2
Product Components Introduction	3
Main Machine and Accessories	4
Product Installation and Disassembly	5
Installing the brush head	6
Installation of the metal tube	7
Installation of the long flat nozzle	8
Installation, disassembly and use of the product	9
Opening and closing the dust cover	10
Suction power adjustment	11
Charging status and indicator	12
Use of accessories	13
Introduction and use of accessories	14
Precautions and product maintenance	15
Daily storage	16
Machine cleaning	17
Trouble clearing and product parameters	18

Special Announcement

The instruction manual and warranty card specify the agreement between the company and the user regarding the creation and termination of quality assurance responsibilities and the rights and obligations in the course of after-sales service. Please read the instruction manual carefully before using this product. If the vacuum cleaner is damaged by abuse, negligence, improper use or lack of manufacturer's parts, the user will be deprived of any right to after-sales service and all warranty claims will be rejected by our company. In addition, this publication may not be reproduced, stored in any retrieval system or transmitted in any form without the permission and authorization of our company.



Note

The vacuum cleaner here is for home use only and should not be used in any factory or other commercial premises.

Safe Use Guide

Please observe basic safety precautions during use, including but not limited to the following

(please read all of the following safety tips carefully before use):

Battery Description

- This product is powered by a high-end DC lithium battery and should be avoided with all other battery models.
- When inserting or removing the power cord, please hold the power plug of the charging cradle and avoid pulling or twisting it with force.

During the use

1. Do not use the machine outdoors or in wet places, or grasp the machine with wet hands.
2. Do not bump or drop the machine, place it outdoors or drop it into water.
3. To avoid clogging, do not put large objects into the nozzle of the vacuum cleaner. Keep the nozzle away from lint, hair and other objects that may cause clogging.
4. To avoid injury during the use, keep hair, clothing, fingers and other body parts away from the nozzle and the moveable parts.
5. Avoid inhaling any burning or smoking debris such as cigarette butts, matches, soot and other objects.
6. Do not use the vacuum cleaner to clean flammable substances or liquids, such as gasoline or where there may be gasoline, kerosene, paint, alcohol, cleaning agents, etc.
7. Do not use the vacuum cleaner before installing the filter.
8. Turn off the machine before connecting or replacing any accessories.
9. Keep the vacuum cleaner indoors and use it only in a dry room.
10. Do not use it for other purposes unless otherwise stated in the manual.
11. Do not use the vacuum cleaner as a toy. If there are children in the environment where it is used, please pay special attention to the safety of use.
12. Be careful when cleaning stairs.
13. Please use the machine correctly according to the instructions. Use only the manufacturer's recommended accessories for this product.

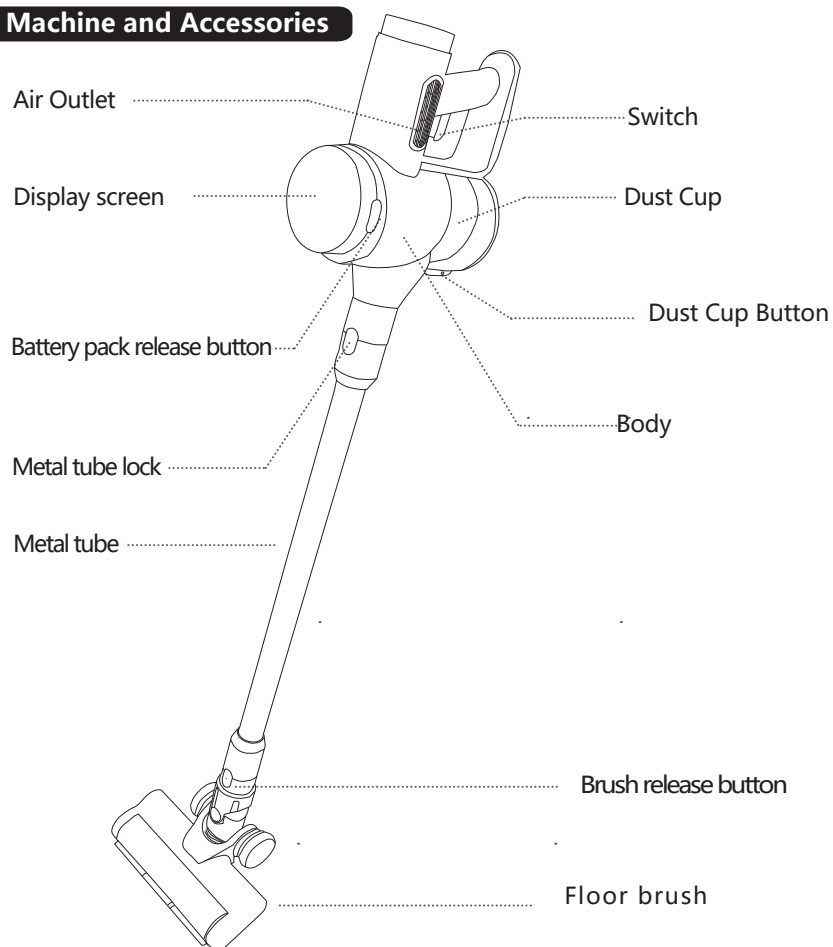


WARNING

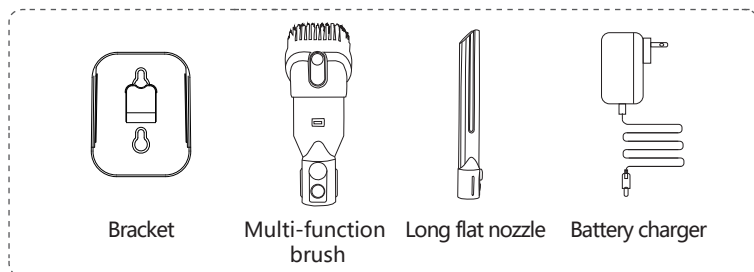
To reduce the potential risk of fire, electric shock or injury, please follow these rules

Product Components Introduction

Main Machine and Accessories



Accessories

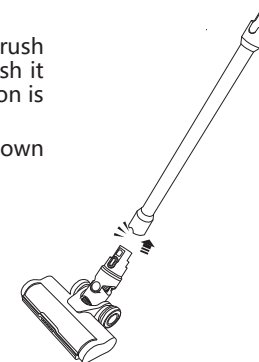


Product Installation and Disassembly

Installation of the floor brush

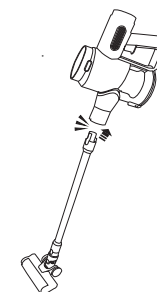
As shown in the picture, align the electric floor brush with the extension tube connector and gently push it in. When you hear the "click" sound, the installation is complete.

(To remove, simply press the locking button shown below and pull down).



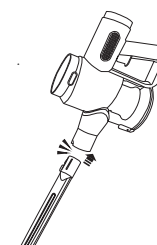
Installation of metal pipes

Connect the machine to one end of the extended aluminum tube (hear a click" to indicate successful installation) and the other end is connected to a floor brush or other accessory (as shown in the picture) and can be used as an upright vacuum cleaner. (Figure): or connect the machine to a floor brush to clean floors, tiles or carpets, etc. It's hard to clean. (To disassemble, simply press the locking button in the figure to pull it apart)



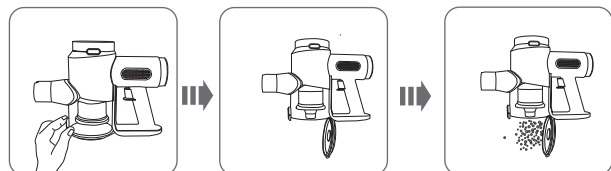
Installation of the long flat nozzle

As shown in the picture, align the slit nozzle with the body connector and gently push it in. When you hear a "click", the installation is complete (to remove, simply press the locking button shown in the figure below and pull down).



Opening and closing the dust cup

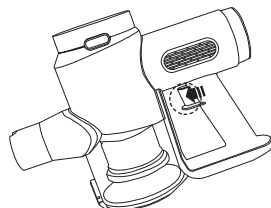
- Pull the button on the dust cup to open it. Tap the button on the dust cup upward and the dust cup is loaded.



①

Get Started

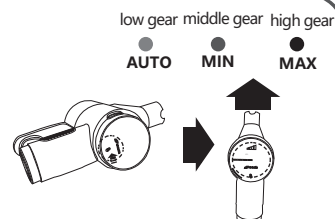
After installing all parts, turn on the on/off button at the handle and start the vacuum cleaner (button in the picture).



②

Suction power adjustment

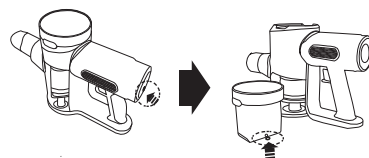
When the machine is turned on, it will be in automatic mode. It will adjust the vacuuming power according to the dust capacity. Touch screen to adjust the suction power, and the low display will show "MIN", "MID" and "MAX" three suction power modes, the high level display will show "AUTO", "MIN" and "MAX" three suction power modes.



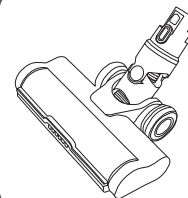
③

Charging status and indicator light

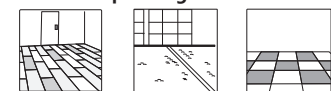
Connect the power adapter to the charging connector in the battery pack, connect the power to start charging. (As shown) There is a progress bar while charging on the LED screen.



Introduction to accessories and how to use them

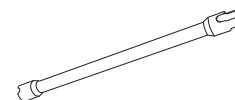


※ Example usage scenarios ※



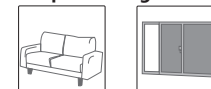
Suitable for cleaning hard surfaces such as floors, tiles and carpets

High-speed rotation of large plush roller brush, fast dust removal. Front high bright LED light helps to clean the bottom of the sofa, other dark corners and dead ends.



Easy to install and clean vertically, and one-touch snap is good for lumbar spine health. With different brush heads, it is easy to clean high places such as roofs, air conditioners and curtains.

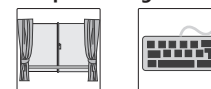
※ Example of usage scenarios ※



Suitable for cleaning all kinds of household joints and narrow locations in the car.

Deep clean sofa seams, brackets, window corners, car interiors and other hard-to-reach seams and other dead spots in the home.

※ Example of usage scenarios ※



Suitable for cleaning curtains, car interiors, air conditioners and other areas that require brushing.

One-touch retractable brush, simultaneous vacuuming and sweeping, efficient dust removal. Slim and soft brushes for deep cleaning of fibers and soft home decorations such as curtains and sofas. Fine bristle brush for deep cleaning of keyboards, door cracks and other small crevices. Refined cleaning requirements.

Cautions and product maintenance

※ During the use

Please do not come close to the radiator.

※ Before the use

To prevent damage caused by collision, please move away from large and sharp objects. Do not use it on any flammable items or liquids, such as gasoline, cigarettes or alcohol.

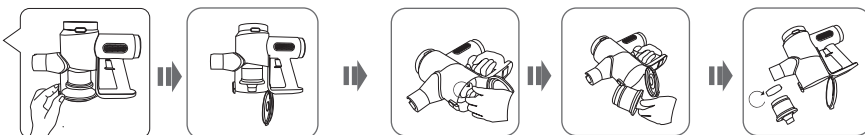
Daily storage

- For long-term storage, please keep the machine in a cool and dry place away from direct sunlight or humidity.

Machine cleaning

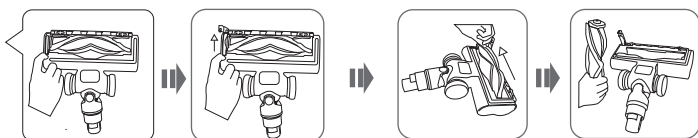
Dump dust, clean the dust collection cup and replace the cleaning filter

- Pull the button on the dust collection cup and dump the dust. Use a tool or dry cloth to clean the dust collection cup. After the cyclone body is removed, the filter, sponge and cyclone body can be washed in water, but must be completely dried before use.



Disassembly of the floor brush roller

- Open the floor brush roller
- As shown in the picture, press the floor brush roller switch, go to remove the roller floor brush for cleaning. For installation, please install in the reverse order of disassembly.



Note

Before the use, make sure all filters and floor brushes are installed in the correct location.

Trouble clearing and product parameters

Troubleshooting instructions

When the product does not work properly, please refer to the instructions.		
	Fault conditions	Settlement Solutions
1	Indicator status flashing	1. The indicator light flashes at the current power level when charging; 2. When fully charged, the indicator light is fully lit and goes off after 10min; 3. When the battery power is too low, the last cell indicator flashes.
2	Host does not turn	1. Battery power is insufficient, please use after charging; 2. Excessive use time will cause high temperature protection, leave to cool, then turn on again and use.
3	Electric floor brush does not turn	1. When it's stucked with foreign object, please continue to use after timely cleaning foreign body; 2. Motor high temperature protection, please wait for the brush head temperature is normal before use; 3. Electric brush head conductive contact point dirty, please wipe the surface of the contact point with a dry and soft cloth, and then retry.
4	Decreased suction power	1. Dust cup dust collected full, clogged filter, please timely clean dust cup and filter before use; 2. The ground brush head is clogged, please clean it before use.
5	LED indicator does not light up when charging	1. Check whether the power adapter is connected well; 2. The battery is fully charged and the battery is in the hibernation state.
6	Too slow to charge	If the battery temperature is high or low, please wait until the battery temperature returns to normal before charging.

※ Product Parameter

Brand	Redkey
Model	P8
Power Rating	250W
Battery Configuration	Li-ion 2200mAh 22.2V
Dust Cup Capacity	500ml
Weight (Net/Gross)	2.8kg/3.9kg
Dimension	706*294*129mm

Redkey

www.redkey.cc

support@redkeyofficial.com