



GEE BON Technology LLC
36 South 18th Avenue, Suite A Brighton,
CO USA 80601 County



Water
Quality
MEMBER



Under Sink Water Filter System GB-UF-08 User Manual



INSTALLATION AND OPERATION MANUAL

Please read user manual carefully before use and keep it properly.

USER MUST READ

The user must follow the installation specifications described in this “Product Installation and Operation Manual”. Otherwise, for the damage or leakage of the water purifier caused by failure to install, use, or purify the water purifier in accordance with the instructions, the company will not bear any economic and legal responsibility.

The user can refer to the installation video posted on GEE BON Amazon Store and contact our 24-hour online customer service.

- Regularly check whether there are leaks in the water purifier and water pipe fittings to avoid property damage caused by leaks.
- This water purifier is designed for home users only and may not be suitable for other purposes.
- The filter element of the water purifier for maintenance and replacement of require replacement parts need to be approved by our company. Quality issues caused by the use of unauthorized parts or accessories, reduced performance or property damage are not covered by the warranty.
- Maintenance of the water purifier and replacement of the filter element assembly is paid service.

1

PRECAUTIONS

- The inlet water quality of this water purifier is municipal tap water that complies with GB5749.
- Do not install this water purifier on a water supply pipeline with a water pressure exceeding 0.6MPa. If the inlet water pressure exceeds 0.6 MPa, a pressure reducing valve must be installed (purchased separately).
- The water inlet temperature of this water purifier is 5 ~ 38 °C. The water inlet temperature exceeding 38 °C may damage the seal and cause water leakage; the water inlet temperature below 5 °C may cause freezing, cause pipeline rupture, and cause water leakage.
- The installation order of the water purifier filter element must not be reversed to avoid affecting the normal function of the water purifier.
- Do not install the water purifier in the reverse direction. Connect the water inlet line to the water outlet.
- Do not install the water purifier in a place exposed to direct sunlight or exposed to harmful chemicals, or where it may be damaged by being dropped, hit, etc.
- Do not install the water purifier near any heat source.
- Do not install the water purifier upside down.

PRODUCT FUNCTIONS

This product realizes the filter element life reminder function. When the life expires, the LCD and the buzzer will give a double alarm; which use button batteries, under normal circumstances, it can be used for 6 months.

1 Basic operation of the control panel**1.1 Display panel description**

- Filter life reminder, using 3 circles indicate filter life, unit is day.
- Auto memory function: The service life is stored in the non-volatile storage after power failure, and the permanent memory of power failure is realized.
- Buzzer alarm function: When the life of the filter element is nearing the end, the buzzer will sound a reminder.

1.2 Filter life reminder function

"A" : represents the first-stage filter element(PP), and the corresponding value displayed is the life of the filter element of the stage;

"B" : represents the 2nd-stage filter element, and the corresponding value displayed is the life of the filter element of the stage;

"C": Represents the third-level filter element, and the corresponding value is the life of the filter element;

A, B and C alternate display every 3 seconds.

The meaning of the numerical values is as follows:

The displayed value is the remaining days of use of the current filter element, countdown method, such as: 180.19..0

When the remaining days are less than or equal to 15 days, the display value flashes, prompting the user to replace the filter element in time.

1.3 Battery level reminder

When the battery level can meet the system requirements, the battery level icon is always on;

When the battery power cannot meet the system requirements, the battery power icon flashes;

2

1.4 Automatic memory function

The intelligent control board calculates the use time of the filter element and stores the related data in the internal memory. Automatically stored once every period of time, the system will not be lost when the power is off; when the system is powered on again, the control board continues the previous processing.

1.5 Buzzer function

Each time the button is operated, the buzzer beeps once;
When the life is less than or equal to 15 days, the buzzer will beep every 3 hours, 3 short beeps, and each beep interval is 5 seconds;

1.6 Key operation functions

The service life of each filter element can be set. After power on, the LCD enters the normal display interface, as shown in the figure below. Under this interface, press and hold for 3 seconds press the key to enter the life setting interface. By default, it starts with the first digit of the first level, that is, "A" and the first digit flash.

1.6.2 Life reset function:

When the life of the filter element has expired, after the replacement of the filter element, it is necessary to reset the life of the filter element on the intelligent control board. In the normal display interface, press and hold the button for 8 seconds to enter the life initialization interface. Both the digital value of the filter life and the number of filter stages are displayed.

Under this interface:

Press the button once to select the number of filter element stages to be initialized
Press and hold the button for 3 seconds to initialize the current filter life;

Remarks:

In the life reset interface, if no key is pressed within 20 seconds, it will automatically exit the life reset interface and return to the main interface.

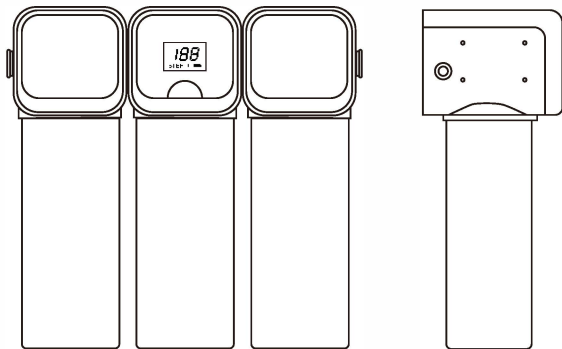
1.7 Backlit display function

When the key is pressed, the backlight screen turns on. After the key is released for 20 seconds, the backlight screen goes out. When the backlight is on, the displayed color is:
When the remaining life of the filter element is greater than 15 days, the backlight screen displays blue;
When the remaining life of the filter element is 15 days or less, the backlight screen displays red;

Watching the video posted on Amazon Store or Contact 24h on-line customer service.



APPEARANCE CHARACTERISTICS



TECHNICAL PARAMETERS

The rated total clean water volume is according to the inspection regulations of the Ministry of Health. The effective treated water volume after the entire process is added. The actual total water treatment volume of the specific user will vary depending on the local water quality and the use environment.

Model	Water purifier
Inlet water pressure	0.1MPa~0.6MPa
Inlet water temperature	5~48°C
Net water flow	5 L/Min
Approximate rated total net water	2500L
Water inlet requirements	Municipal tap water in accordance with GB5749-2006

PRODUCT FEATURES

Product introduction

This water purifier is designed to be used under the countertop of the kitchen near the sink. Connect the existing water pipe in your home with a water supply line fitted with a tee joint. The purpose of this water purifier is to purify drinking water.

The design of this water purifier is about 2500-3000 liters of drinking water or PP three-dimensional dense fine filter element components use for 4-6 months, AMS activated carbon fiber components (with lead removal function) use for 6-8 months. The UF ultrafiltration fill is used for 12-16 months (adjusted according to the difference in water quality and water volume), and the filter element components at all levels must be replaced within the time limit, otherwise it will affect water quality safety.

Main parts of the product

1. Wall seat part of the purifier
2. PP three-dimensional fine precision filter
3. AMS activated carbon fiber module (with lead removal function)
4. UF ultrafiltration membrane filter element assembly
5. Three-way ball valve kit
6. PE pipe
7. Dedicated lead-free faucet

Filtration performance

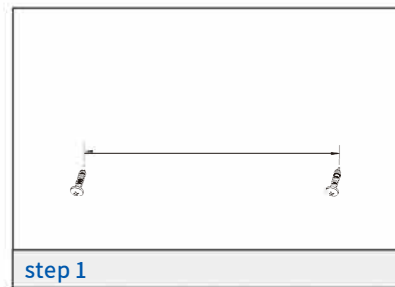
Filter element	Effectively remove / kill
PP three-dimensional fine precision filter	Suspended matter, colloid, sediment, rust, particles and other impurities
AMS activated carbon fiber (with lead removal function)	Granular impurities such as sediment and rust and impurities such as humus
	Off-color, off-odor, residual chlorine, rust and impurities such as humus
UF ultrafiltration membrane	Heavy metals such as lead
	Turbidity and other impurities
	Polymer Organics
	E. coli and other microorganisms

Note:
Do not freeze the water supply and drainage lines or this water purifier. If the water temperature or ambient temperature drops below 5°C, shutting off the supply of the water purifier will cause failure, damage and possible injury of the casing or water supply pipeline.

PACKING LIST

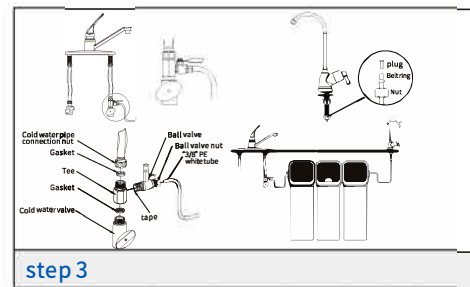
Serial number	Name		Quantity
1	Wall base assembly		1 set
2	PP three-dimensional fine precision filter		1 set
3	AMS activated carbon fiber module (with lead removal function)		1 set
4	UF ultrafiltration membrane filter element assembly		1 set
5	Accessories	"3/8" PE white tube	2meters
6		4 tee	1
7		3 tee ballvalve kits	1
8		Screw	2
9	Manual		1 copy
10	Certificate of conformity		1
11	Warranty Card		1

INSTALLATION STEPS



step 1

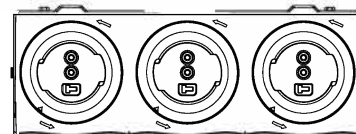
corresponding positions on the back of the machine



step 3

Use a screwdriver against the internal buckle, pull out the plug and insert pipe. Cut the matching 3/8" PE pipe into two sections, one connects the three-way ball valve joint with wall seat, and one connects the faucet with water filter system.

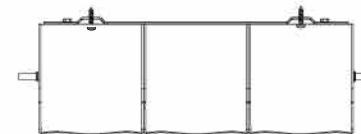
Bottom view



step 2

Install the PP filter element assembly to the first stage of the wall base, the activated carbon filter element to the second stage, and the UF membrane filter element assembly to the third stage level. Align the two connecting tubes of the filter element with the connecting holes in the wall base, and turn them counterclockwise to the end.

Top view



step 4

Hang the entire group of water purifiers on the wall mount screws to rinse and start the water purifiers

1. Open the household water valve and small ball valve,
2. Turn on the faucet and the water flow enters the water purifier. Due to the action of carbon particles and air bubbles, the initial water flow is rarely turbid. This is normal.
3. Continuously flush the new water purifier for about 10 minutes, until the water flow is clear and free of bubbles, and you can provide drinking water.

7

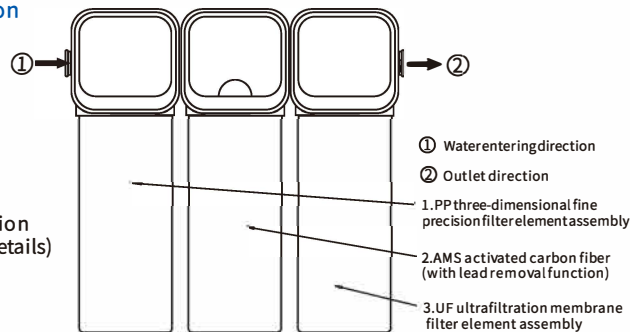
INSTALLATION NOTES

Preparations before installation

1. Confirm the position where the water purifier is to be installed. (Depending on the actual situation during installation)

2. Confirm whether the various accessories required for installation are complete. (See packing list for details)

3. please close the water valve before installation



8

CARE AND MAINTENANCE

Recommended replacement time for each element

(Adjusted according to different water quality and quantity)

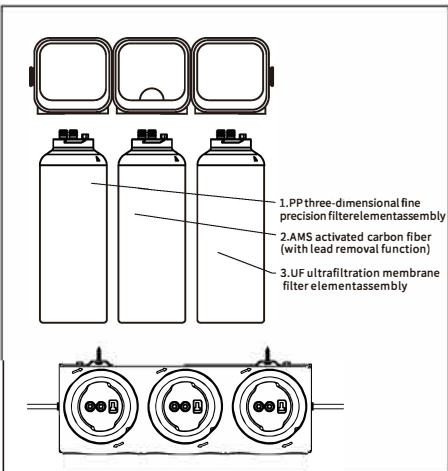
Filter element name	Suggested replacement time
PP 3-dimension filter	4-6 months
AMS activated carbon fiber (with lead removal function)	6-8 months
UF ultrafiltration filter	12-16 months

The replacement time will be adjusted according to the water quality and use method.

1. The cycle of various filter elements recommended by this water purifier is based on statistical estimates of the average index of tap water in various places. If the water quality and the machine usage rate at the user's actual use are significantly different from the average index, the use of the filter element and the estimated period will be significantly different. The actual use status is used as the basis for replacing the filter element, and please contact the on-line customer service in time.

2. The estimation of the service life of the filter of the water purifier is based on the water consumption of ordinary households, and it is only suitable for domestic use. It is not necessarily suitable for public places with large water consumption.

Filter element combination replacement method



1. The filter element is aligned clockwise with the wall base until it cannot be rotated, and the filter element will automatically fall off the wall base.

2. Select the corresponding replacement filter element, align the two connection pipes of the filter element with the connection holes in the wall base, and turn them counterclockwise.

3. It is not necessary to close the water inlet valve when the filter of the water purifier is replaced, the wall socket will automatically close the water outlet. When removing the filter element, a small amount of water may flow out of the filter element.

WARRANTY SERVICE PROVISIONS

1. Warranty period

The whole machine is guaranteed for one year, and the consumables are not covered by the warranty (consumables include various filter elements).

2. Warranty conditions

The user shall abide by the following rules, otherwise the warranty right will be lost. Users should purchase this product from legal distributors through legal channels. The user should keep the purchase invoice and instructions properly. Use of the machine must be carried out in strict accordance with the instruction manual.

3. Exceptional conditions

Product failure or damage in one of the following cases is not covered by the warranty

1. Obtain this product through illegal means or illegal channels.
2. Missing invoices and machines that cannot provide relevant proof materials.
3. Use unauthorized parts or accessories.
4. Improper use, failure or damage caused by violation of the "Product Manual".
5. Failure and damage caused by forcible use of the product beyond normal use conditions.
6. Damage caused by force majeure.

4. Warranty service

During the warranty period, if the warranty conditions are met, and the exception conditions are not violated, the machine will fail in the event of failure or damage. The company will provide a full range of warranty services, including: free repair of faulty machines; free replacement of faulty parts; other national regulations, including the "Consumer Rights Protection Law", "Product Quality Law".

5. Warranty service procedures

Please turn off the water immediately once the user finds a malfunction when using our products. After confirming that the conditions meet the requirements, the on-line customer service should be contacted in time.