

ShineTech Smart Security SSV-AL8911-IPV2

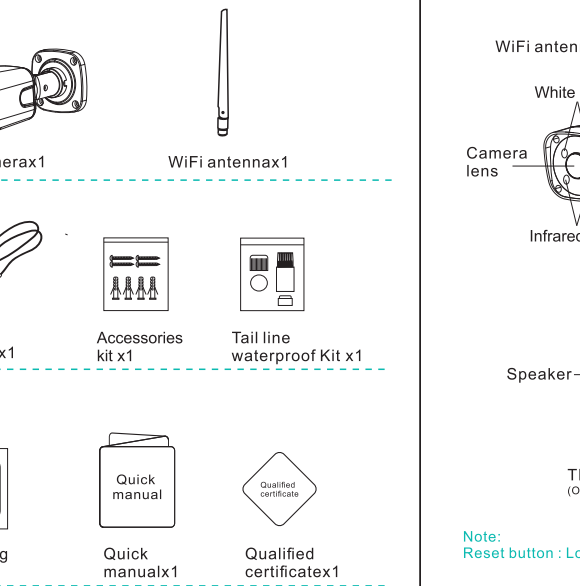
BULLET CAMERA

Quick Manual for Android and iOS

SSV-AL8911HDV2 · CM-AL8911 · PIR-AL8911 · KIPPU-HDV2 · KASPU-HDV2 · VK-TWIPW200A · IP302PIR · SSV-IP2058S2 · SSV-HD2058V2V12 · SSV-6503VH8 · SSV-6924VH8 · SSV-6711VH8 · SSV-1016 · SSV-781V3 · SSV-6209WF · SSV-6309WF · SSV-6509WF · SSV-6809WF · SSV-6238WL · SSV-HD6238 · SSV-6320LR · SSV-HD6268 · SSV-HD6260 · SSV-HD6233

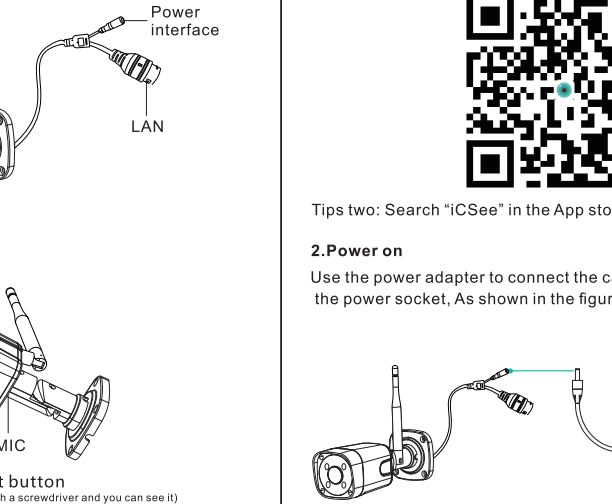
Packing list

After open packing list box, please check product body and accessories as below:



Interface

Before use, please pay attention to the interface and button of camera.

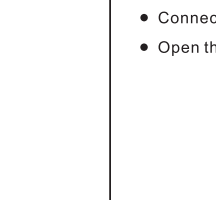


Note:
Reset button : Long press to restore the camera to factory settings.

Operation

1.Download APP

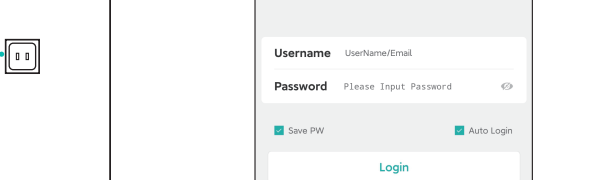
Tips one: Scan QR code.



Tips two: Search "iCSee" in the App store and download.

2.Power on

Use the power adapter to connect the camera power interface and the power socket, As shown in the figure below.



Note:

If you need local storage, please install the memory card firstly, then power on the device (the memory card does not support hot swapping, please plug and unplug the memory card when the device is powered off). **Cloud storage is recommended, which is safe and convenient. Details See "Step 4" for operation.**

3.Camera configuration

1.Wireless network configuration:

01.User login

- Connect your phone to WiFi.
- Open the iCSee app, register an account and login(Figure 1).

Figure 1

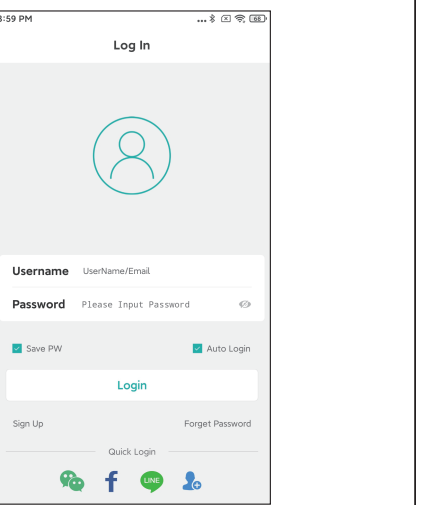


Figure 2

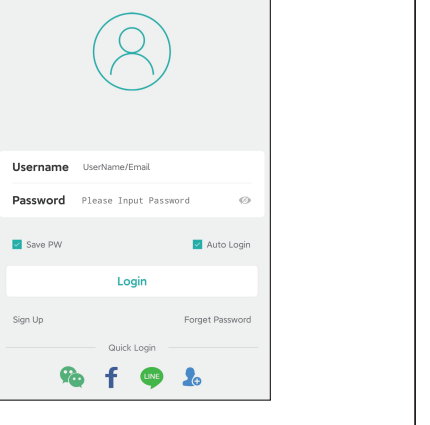
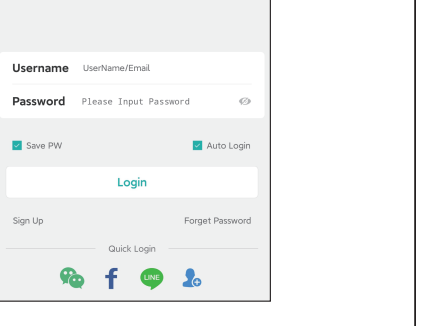


Figure 3



02.Quick configuration

- After successful login, Click the "+" button (Figure 2).
- Click the "WiFi Camera" (Figure 3) .
- Set network configuration according to the camera's voice prompts and the APP interface step-by-step guide. When the camera emits a "Connect router successfully" prompt, it means that the camera has successfully configured the network.

Note: If the camera does not have a prompt sound for a long time, you can press and hold the camera Reset button until you hear the prompt "Restore factory settings, please do not power off" and release it to restore the camera to factory settings and then configure the network.

Figure 4

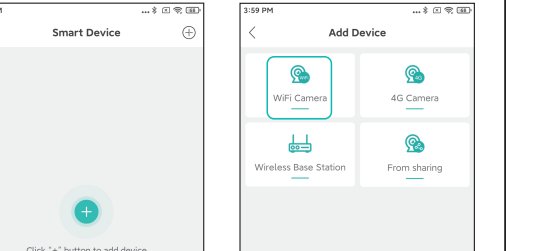


Figure 5

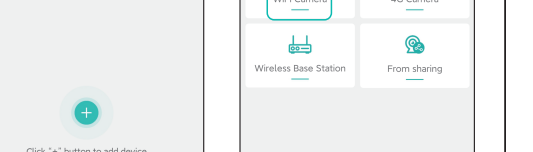


Figure 6



Figure 7



Figure 8



Figure 9



Figure 10

Figure 11

Figure 12

Figure 13

Figure 14

Figure 15

Figure 16

Figure 17

Figure 18

Figure 19

Figure 20

Figure 21

Figure 22

Figure 23

Figure 24

Figure 25

Figure 26

Figure 27

Figure 28

Figure 29

Figure 30

Figure 31

Figure 32

Figure 33

Figure 34

Figure 35

Figure 36

Figure 37

Figure 38

Figure 39

Figure 40

Figure 41

Figure 42

Figure 43

Figure 44

Figure 45

Figure 46

Figure 47

Figure 48

Figure 49

Figure 50

Figure 51

Figure 52

Figure 53

Figure 54

Figure 55

Figure 56

Figure 57

Figure 58

Figure 59

Figure 60

Figure 61

Figure 62

Figure 63

Figure 64

Figure 65

Figure 66

Figure 67

Figure 68

Figure 69

Figure 70

Figure 71

Figure 72

Figure 73

Figure 74

Figure 75

Figure 76

Figure 77

Figure 78

Figure 79

Figure 80

Figure 81

Figure 82

Figure 83

Figure 84

Figure 85

Figure 86

Figure 87

Figure 88

Figure 89

Figure 90

Figure 91

Figure 92

Figure 93

Figure 94

Figure 95

Figure 96

Figure 97

Figure 98

Figure 99

Figure 100

Figure 101

Figure 102

FCC Caution: Any changes or modifications not expressly approved by the party responsible for compliance could void the user's authority to operate this equipment.

FCC WARNING

This device complies with part 15 of the FCC Rules. Operation is subject to the following two conditions: (1) this device may not cause harmful interference, and (2) this device must accept any interference received, including interference that may cause undesired operation. Any changes or modifications not expressly approved by the party responsible for compliance could void the user's authority to operate the equipment.

NOTE: This equipment has been tested and found to comply with the limits for a Class B digital device, pursuant to Part 15 of the FCC Rules. These limits are designed to provide reasonable protection against harmful interference in a residential installation. This equipment generates, uses and can radiate radio frequency energy and, if not installed and used in accordance with the instructions, may cause harmful interference to radio communications. However, there is no guarantee that interference will not occur in a particular installation.

If this equipment does cause harmful interference to radio or television reception, which can be determined by turning the equipment off and on, the user is encouraged to try to correct the interference by one or more of the following measures:

- Reorient or relocate the receiving antenna.
- Increase the separation between the equipment and receiver.
- Connect the equipment into an outlet on a circuit different from that to which the receiver is connected.
- Consult the dealer or an experienced radio/TV technician for help.

To maintain compliance with FCC's RF Exposure guidelines, This equipment should be installed and operated with minimum distance between 20cm the radiator your body:

Use only the supplied antenna.

FCC ID: 2A3SH-SSV-8911