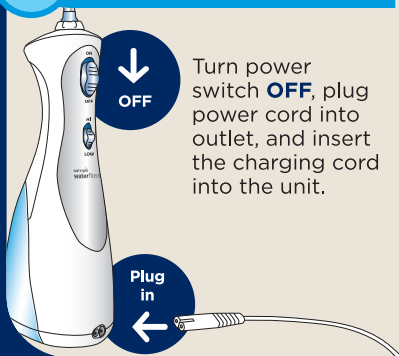
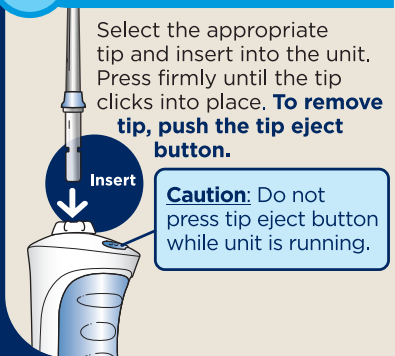


QUICK START GUIDE

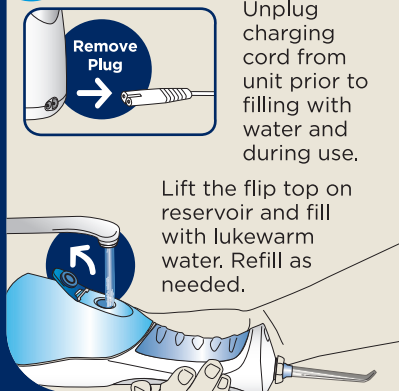
1 Charge Unit for 24 Hours Prior to First Use.



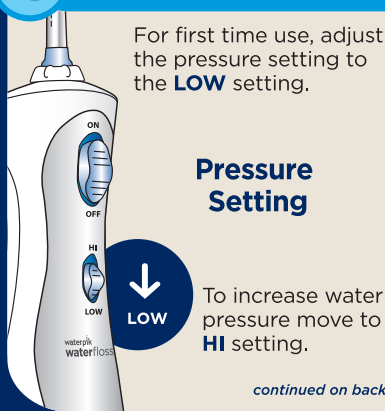
2 Insert Tip:



3 Fill the Reservoir:



4 Usage:

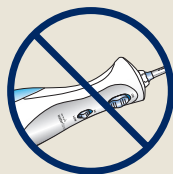


This device is only compatible with a voltage system of 120VAC, 60Hz.
Do not plug this device into a voltage system that is different.

5 On/Off Procedure:

Always place tip in mouth before turning unit on.

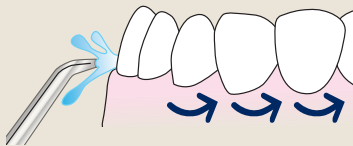
Lean over sink and close lips enough to prevent splashing, while still allowing water to flow from mouth into the sink. Turn unit **ON**.



Keep unit upright during use to ensure continuous water flow.

6 Technique Tips for Best Results:

Aim the water stream just above the gumline at a 90 degree angle.



Starting with the back teeth, follow the gumline and pause briefly between teeth. Continue until all areas around and between teeth have been cleaned.

7 REGISTER YOUR PRODUCT ONLINE NOW!

Receive up to
\$44

in savings on the
purchase of additional
Waterpik® products.

www.waterpik.com/registration

Water Pik, Inc. 1.800.525.2774 • www.waterpik.com

1730 East Prospect Road, Fort Collins, CO 80553-0001 USA

©2014 Water Pik, Inc. FN 20019052-F AA