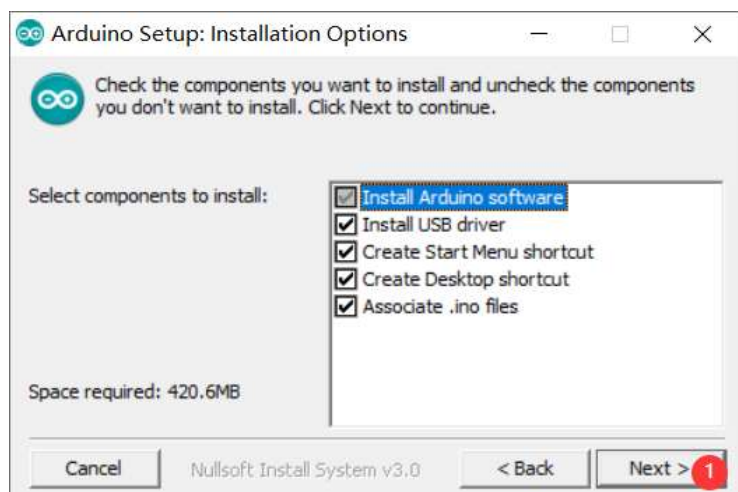


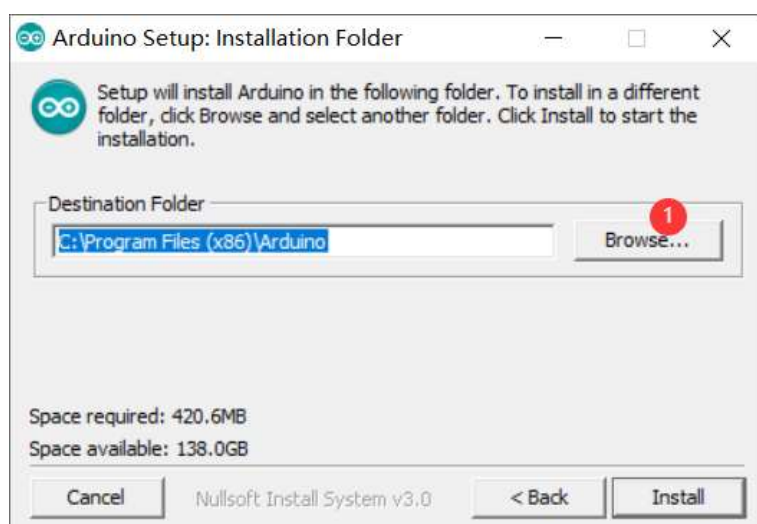
ESP32-CAM uses Arduino IDE for video streaming and taking photos

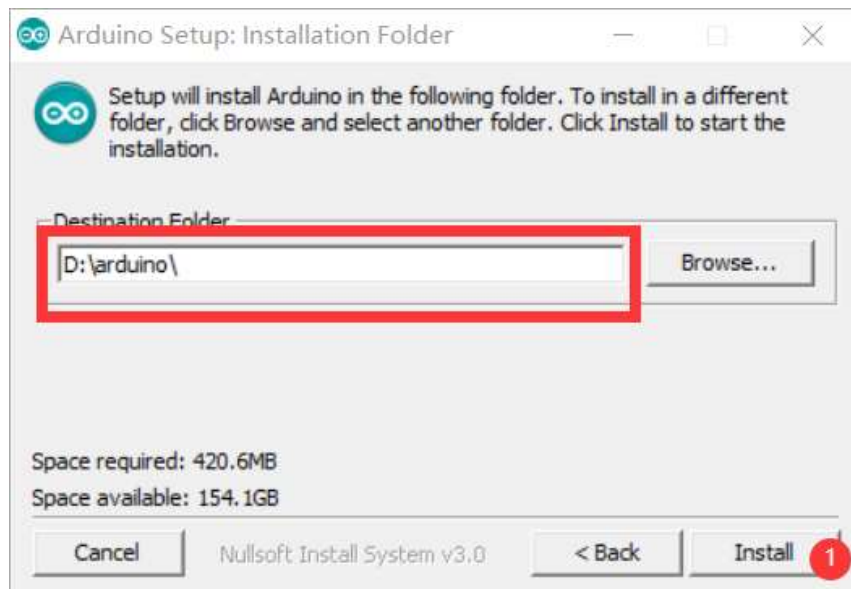
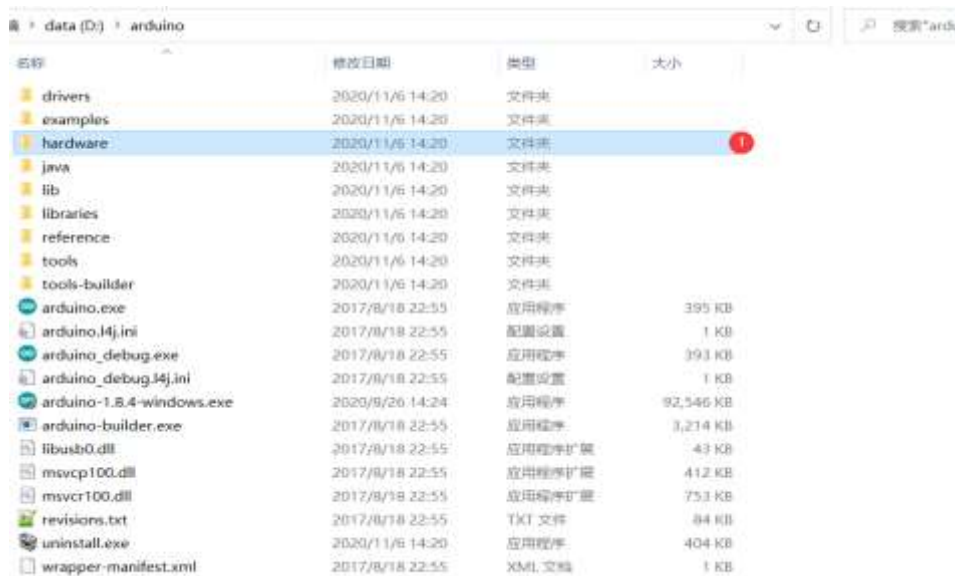
—、Arduino development environment setup

1. Download the Arduino IDE from the Arduino official website
2. Click “I agree”, click “Next”

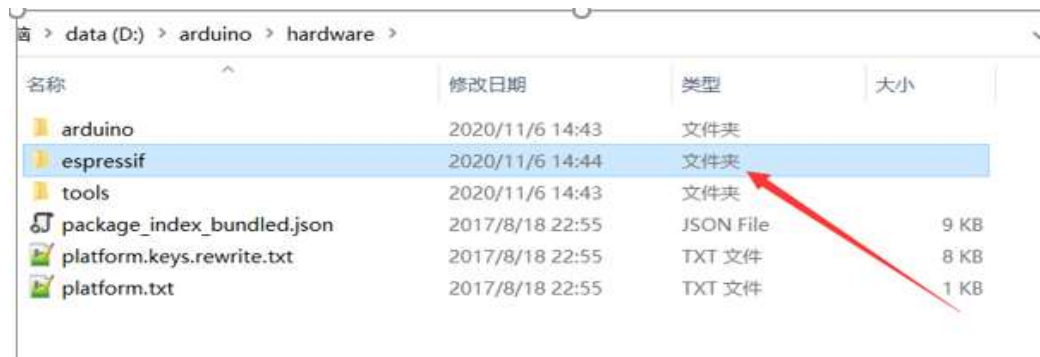


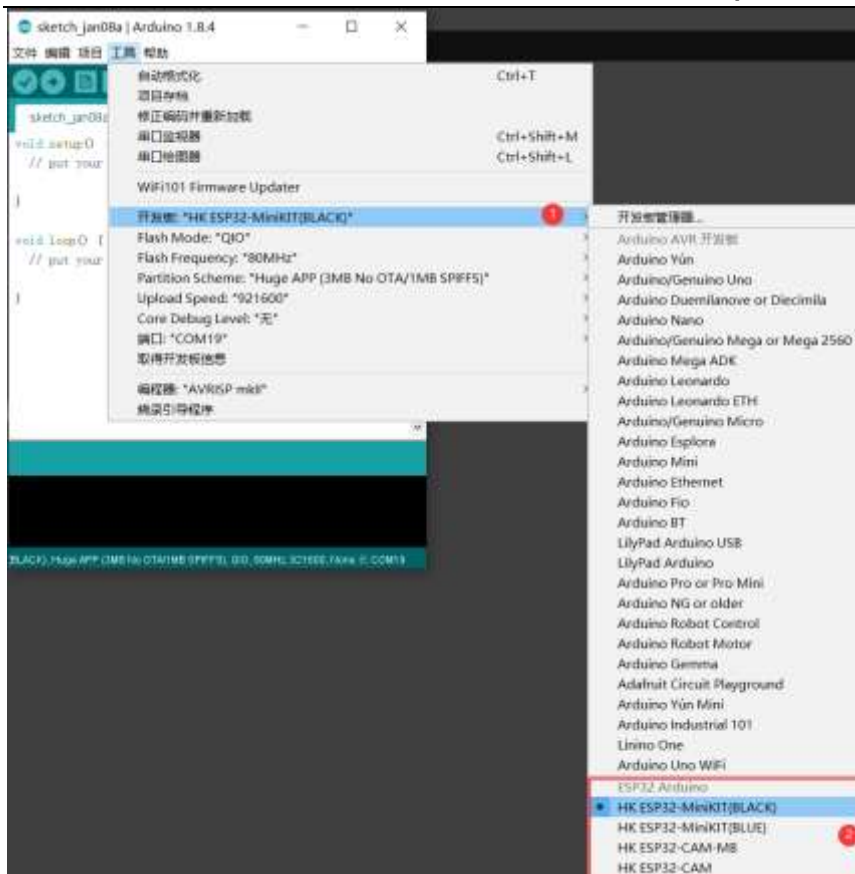
3. The default is to install on the c drive, you can click Browse to change the installation location



4.Here I installed it in the arduino folder of drive d (remember this installation path)**5.Wait for the installation to complete, open the hardware under the installation path****6.Unzip the file "espressif"**

After the download is complete, unzip it to the "hardware" directory

**7.Open Arduino IDE, select the corresponding development board**

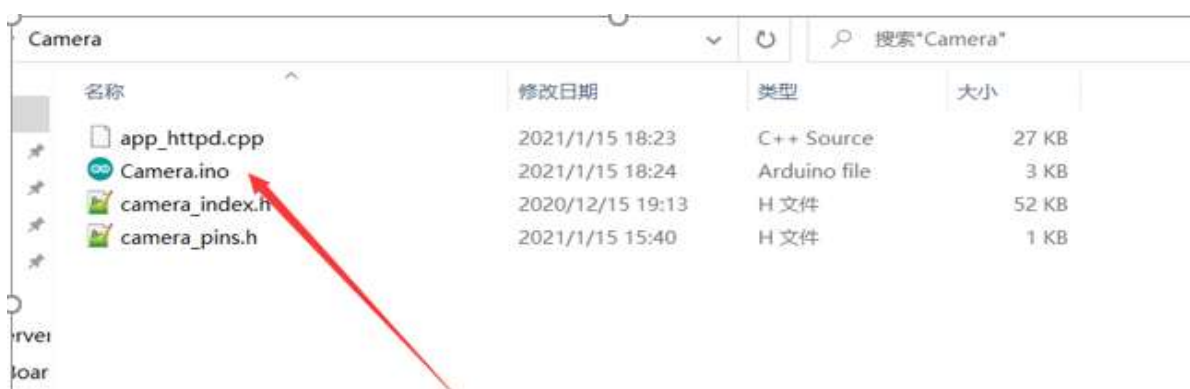


At this point, the Arduino IDE development platform is set up. Here is how to use the example

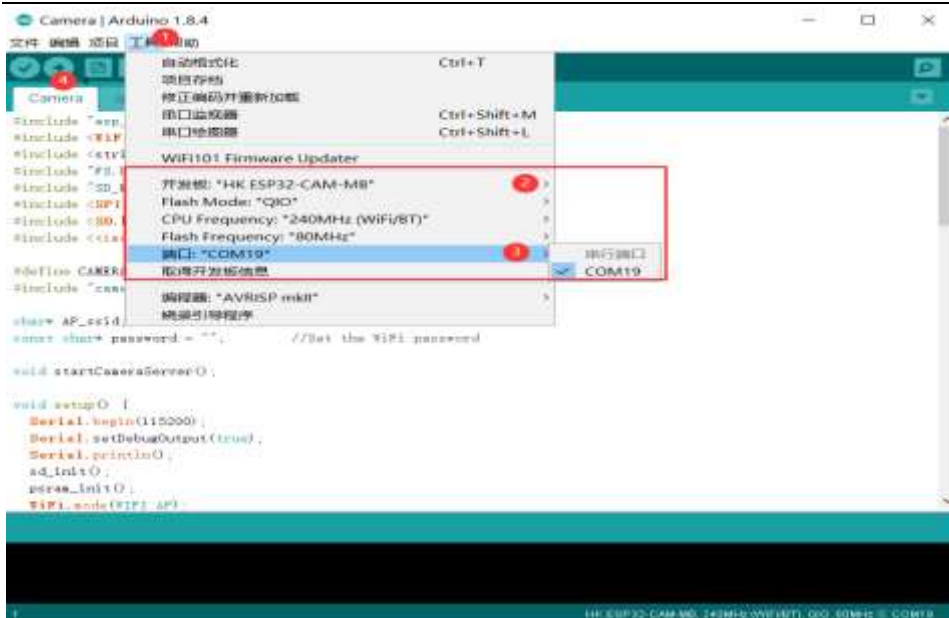
二、ESP-CAM video streaming and photographing example

1.Open Camera file

2.After the download is complete, enter the "Camera" directory, double-click to open "Camera.ino"



3.Select the development board, select the port, and upload the code



4. **Open the serial port, select the baud rate 115200, reset the development board, and check the serial port output**



5. Visit the video streaming server

You can turn on the WIFI of your mobile phone and connect to "ESP-xx:xx:xx:xx:xx:xx" with your mobile phone (the suffix of each development board is different). Open the browser and type the 192.168.4.1 address. Press the Start Streaming button to start video streaming. Press Get Still to take a photo, the photo is stored in the SD card, and the photo is named randomly

