

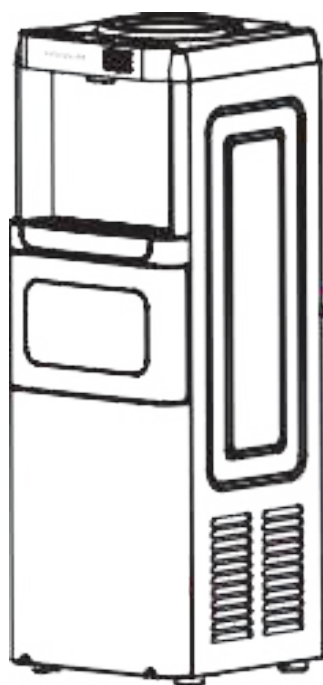
care & use

ICE MAKER


WITH WATER DISPENSERS

MODEL NO.: HZB-15YLR

Important Safety Information.....	1
Safety Instructions.....	2
Getting to Know Your Unit.....	3
Before The First Use.....	5
Using Your Unit.....	7
Troubleshooting Guide.....	9



Safety Definitions

 This is the safety alert symbol. It is used to alert of potential personal injury hazards. Obey all safety messages that follow this symbol to avoid possible injury or death.



DANGER

DANGER indicates an imminently hazardous situation which, if not avoided, will result in death or serious injury.



WARNING

WARNING indicates a potentially hazardous situation which, if not avoided, could result in death or serious injury.



CAUTION

CAUTION indicates a potentially hazardous situation which, if not avoided, may result in minor or moderate injury.



IMPORTANT

IMPORTANT indicates installation, operation or maintenance information which is important but not hazard-related.

Safety Instructions



WARNING

Please read all instructions before using this appliance.

DO NOT store or use gasoline, or other flammable liquids in the vicinity of this or any other appliance.

Read product labels for warnings regarding flammability and other hazards.

Avoid contact with any moving parts of automatic ice maker. Remove all staples from the carton. Staples can cause severe cuts, and also destroy finishes if they come in contact with other appliances or furniture.

Child Safety

Destroy or recycle the carton, plastic bags, and any exterior wrapping material immediately after the Ice Maker is unpacked. Children should NEVER use these items to play.

Cartons covered with rugs, bedspreads, plastic sheets or stretch wrap may become airtight chambers, and can quickly cause suffocation.

This appliance must be plugged into at least a 15 AMP 110-115 VOLT 60 Hz GROUNDED OUTLET. This appliance must be grounded. It is equipped with a 3-wire cord having a grounding plug. The plug must be plugged into an outlet that is properly installed and grounded.

WARNING

Improper use of grounded wire can result in the risk of electric shock. Consult a physician if necessary. Do not attempt to defeat this safety feature by modifying the plug.

Avoid the use of an extension cord because it may overheat and cause a risk of fire.

However, if it is necessary to use an extension cord:

A. Use only 3-wire extension cords with 3-blade grounding plug.

B. The marked rating of an extension cord must be equal to or greater than the rating of this appliance.

Attempting any maintenance or cleaning:

To minimize the possibility of electric shock, unplug this appliance from the power supply or disconnect at the household distribution panel by removing the fuse or switching off the circuit breaker before attempting any maintenance or cleaning.

IMPORTANT: Use Only Water

We want to ensure the safe and efficient operation of your ice maker. Please be aware that this appliance is designed for one specific purpose – to make ice from water. Do not use any beverages, liquids, or substances other than water in this icemaker, or may lead to damage, malfunctions, and potentially hazardous situations therefore voiding your warranty.

Why Use Only Water?

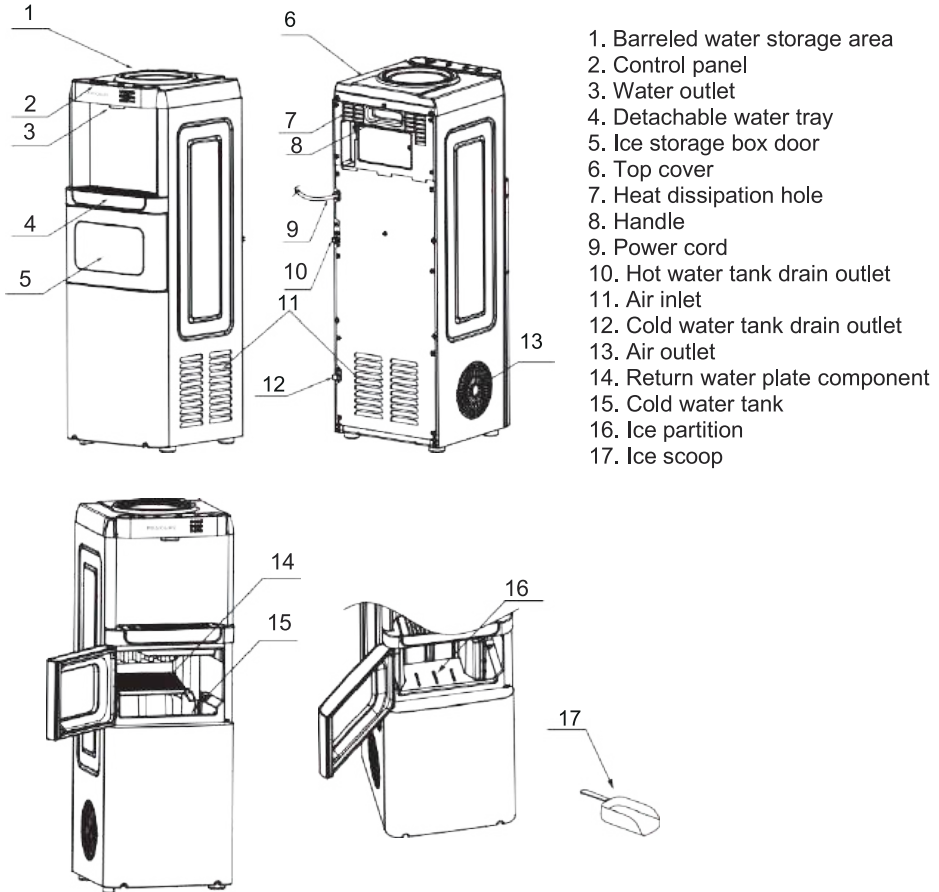
- 1. Safety:** Introducing beverages or non-water substances can result in chemical reactions or build-up that could pose safety risks.
- 2. Performance:** Using water ensures that your ice maker functions as intended, producing clean and odorless ice cubes.
- 3. Durability:** Water is the only liquid that will not corrode or damage the internal components of your ice maker, preserving its lifespan.

Consequences of Using Beverages?

- 1. Damage:** Non-water substances can corrode, clog, or damage the internal components, resulting in costly repairs or replacement.
- 2. Health Concerns:** Using beverages may introduce contaminants into the ice-making process, potentially impacting the safety of the ice produced.
- 3. Voided Warranty:** Using beverages or non-water substances may void your appliance's warranty, leaving you responsible for any repair or replacement costs. To ensure the longevity and reliability of your ice maker, always follow these guidelines strictly. Only use clean, potable water in your ice maker to guarantee safe and refreshing ice for all your beverage needs.

If you have any questions or concerns regarding the proper usage of your icemaker, please refer to the user manual or contact our customer support for assistance.

General instruction

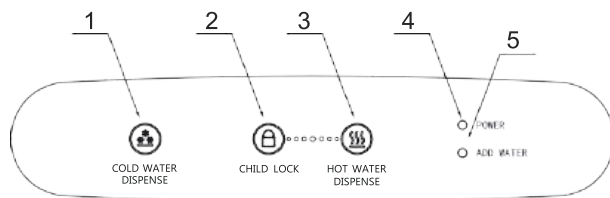


Come equipped with the ice scoop, allowing for easy and hygienic handling of ice.

4

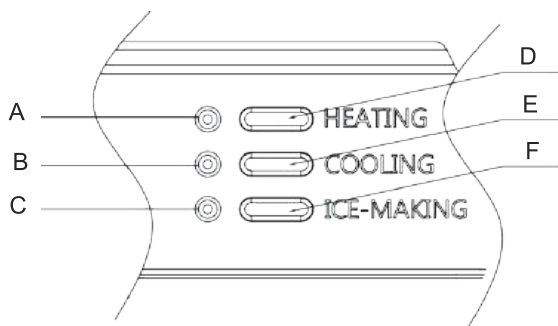
GETTING TO KNOW YOUR UNIT

Control panel



- 1. Cold water button
- 2. Child lock button
- 3. Hot water button

- 4. Power indicator
- 5. Water shortage indicator: turns red when lacks water



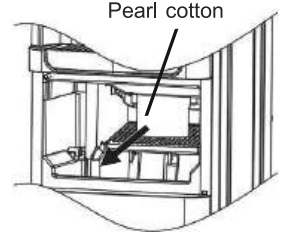
- A. Heating water indicator light
- B. Cooling water indicator light
- C. Ice making indicator light

- D. Heating button
- E. Cooling button
- F. Ice-making button

Unpacking the unit

1. Removing the package. Do not turn the unit upside down, or lay it on its side.
 - a. Remove the strapping.
 - b. Open the carton.
 - c. Pull the unit straight up from the carton.
 - d. Remove the plastic bag.
 - e. Remove the Styrofoam packing inside, including pearl cotton on the evaporator.
 - f. Check if there is a water tray, ice scoop and shock silicon pad, if any accessories are missing please contact the customer service department.

The shock silicon pad can effectively reduce the sound of ice falling onto the partition, and customers can place the shock silicon pad on the partition themselves. The compressor has very sensitive mounts inside of its welded shell in order to provide quiet running. Improper handling may damage the compressor.

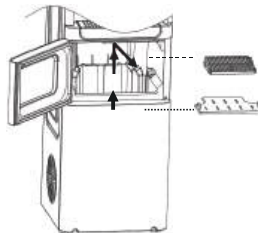
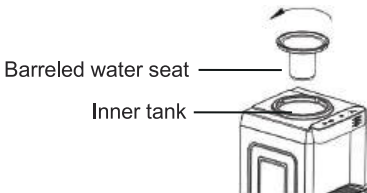


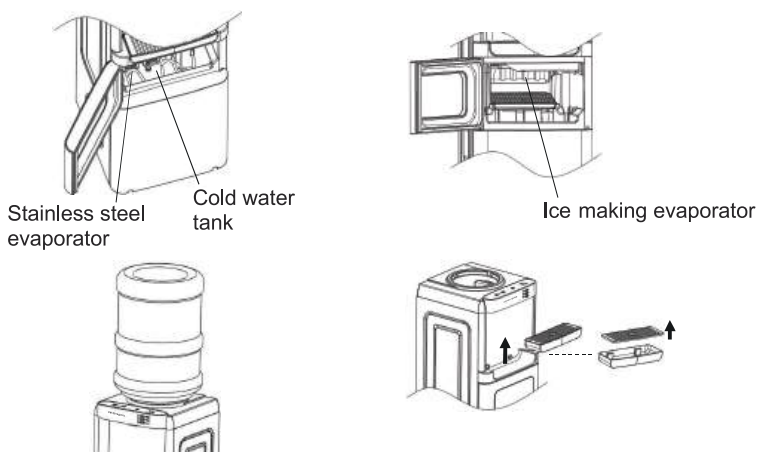
2. Wipe it clean if necessary.
3. Place the unit on the hard and flat ground and let it sit for 2 hours. Pay attention to put it evenly and moderately. The location should be far away from high temperature surrounding like direct sunlight or other source of heat.
4. Please locate the unit at the place which have the good air circulation condition. And make sure that there are at least 6.3 inches on both sides and the back of unit.
5. The appliance must be positioned so that the plug is accessible.
6. Fasten the drain cap tightly at the back of the unit before running the unit. It maybe has loosed during the shipping process which will cause the water leakage when you are using.
7. Do not plug the power cord into the power socket yet.
8. This unit is for indoor use only. Room temperature should not exceed 97°F.

Care And Cleaning

Before using your unit, it is strongly recommended to clean it thoroughly.

1. Anticlockwise rotate and remove the barreled water seat, scrub the inner tank with warm water. Remove the return water plate component and clean the inner compartment of ice storage box with warm water and a soft cloth.





2. Clean the stainless steel evaporator in the cold water tank and the ice making evaporator in the ice storage box with water or alcohol.
3. Add water from the top of the inner tank and the ice storage box, and clean the inner tank with diluted cleaning agent, warmwater, and a soft cloth.
4. After cleaning thoroughly, anticlockwise open the drain nut on the drain outlets, open the drain plug to drain the water from the inner tank and the ice storage box, clean it several times repeatedly, and then reinstall the drain plug and drain nut.
5. The exterior of the machine should be frequently cleaned with diluted cleaning agents and warm water.
6. After the machine is cleaned, place a barreled water containing drinkablewater on the top of the machine.
7. During the use of the machine, after the water tray is full, it can be disassembled, the waste water inside can be poured out and cleaned.

When the machine is not in use for a long time, the water in the machine should be drained and the inside of the machine should be wiped dry.

Improper use of the grounded plug can result in the risk of electrical shock. If the power cord is damaged please call our customer service.

1. Make sure that the unit is not plugged into the main electrical outlet.
2. Before placing drinkable water bottle on the unit, be sure that the drain cap on the back is tightly fastened.
3. Hold the barreled water vertically and upside down and place into the barreled water seat. Apply slightly pressure in order to pierce the bottle cap with the spigot. This unit accepts two, three or five gallons barreled water with pierceable sealed caps.
4. If the unit is brought in from outside in winter time, give it a few hours to warm up to room temperature before piercing it in.

⚠ DANGER: This unit should be properly grounded for your safety. The power cord of this appliance is equipped with a three-prong plug which mates with standard three prong wall outlets to minimize the possibility of electric shock.

Plug your appliance into an exclusive, properly installed, grounded wall outlet. Do not, under any circumstances, cut or remove the third (ground) prong from the power cord. Any questions concerning power and/or grounding should be directed toward a certified electrician.

This appliance requires a standard 110-115volt, 60Hz electrical outlet with three-prong ground.

After plugging in the main power outlet, the Power indicator on the control panel will be on. Then you can start to operate the hot water, cold water and ice-making function as you desired.

Hot Water Operation

Press the Heating button, the corresponding heating indicator light (white) will light up, the hot water function will be turned on, and the hot water production time is generally around 15 minutes (depending on the added water temperature and the ambient temperature). When the heating indicator light (green) is constantly on, the water temperature has reached the set requirement (190°F-203°F).

Cold Water Operation

Press the Cooling button, the corresponding cooling indicator light (white) will light up, the cold water function will be turned on, and the cold water production time is generally around 20 minutes (depending on the added water temperature and the ambient temperature). When the cooling water indicator light (green) is constantly on, the water temperature has reached the set requirement ($\leq 47^{\circ}\text{F}$).

Ice-Making Operation

Press the Ice-making button, the corresponding ice making indicator light (white) will light up, the ice making function will be turned on, and the ice making time is generally around 7 minutes per time (depending on the added water temperature and the ambient temperature);. When the ice making indicator light (green) is constantly on, it indicates that the ice storage box is full. Remove the ice cubes from the box and restart the ice making process.

Cold Water And Ice-Making Operation

Press the Cooling and Ice-making buttons, the corresponding two indicator light (white) will light up, the function will be turned on. The ice making work will be prioritized. After making ice, if the cold water temperature does not reach the set temperature, enter the cold water mode again.

How To Get The Hot Water?

Click the Child lock button, and the child lock light will turn off. Within 3 seconds, click the Hot water button, and the hot water indicator light will remain on. The water outlet will start to produce hot water, with a single output of about 2 minutes. During the hot water process, you can click the Hot water button again to end the hot water supply and turn off the indicator light.

How To Get The Cold Water?

Click the Cold water button, the cold water indicator light will remain on, and the water outlet will start to discharge cold water. The amount of cold water discharged per time is about 2 minutes. During the discharging process, you can click the Cold water button again to end the cold water process and turn off the indicator light.

How To Get The Ice?

Open the ice storage box door, use the ice scoop to remove ice and place them in the container prepared. After removing the ice, close the door.

PROBLEM	POSSIBLE CAUSES	SOLUTION
ADD WATER indicator light turns on.	Lack of Water.	Replace the drinking water bucket.
ICE-MAKING indicator light turns on.	<ol style="list-style-type: none"> 1. Too many ice cubes in the box 2. The ice full sensor is broken, and the ice full light is constantly on without ice. 	<ol style="list-style-type: none"> 1. Remove the ice cubes from the box 2. After pressing the ICE-MAKING button for more than 5 seconds, the ice maker can be forcibly turned on and run for 10 cycles, or contact the manufacturer to replace the sensor.
POWER indicator light flashes.	The ice shovel in the ice storage box is stuck.	If the ice block gets stuck in the ice shovel, remove the ice block. Otherwise, please consult the after-sales service personnel.
Ice are connected together.	The ice making cycle time is too long that too much immersion of the evaporator into the ice making box.	Stop ice making, wait for the ice cubes to melt, and restart ice making, adjust the evaporator.
	The water temperature inside the water tank is too low.	Replace the water in the water tank. The water temperature should ideally be between 46°F and 90°F.
The ice making process is normal, but no ice.	The ambient temperature or water temperature is too high.	Please make ice when the ambient temperature is below 90°F and add a certain amount of cold water to the water tank.
	Leakage of refrigeration system.	Contact after-sales service personnel.
	Blockage of refrigeration system.	Contact after-sales service personnel.

Thank you for purchasing this product! If you have any question about the product, such as missing parts, damaged products, product assembling, and operation, please contact us via customer service number: **661-435-8826**.

IMPORTANT

Please call our customer service department for any consulting:

661-435-8826

(8:30am - 5:30pm P.S.T.)

DATED PROOF OF PURCHASE IS REQUIRED FOR WARRANTY SERVICE.

AVIS

Veuillez appeler le service à la clientèle pour toutes questions au:

661-435-8826

(8:30am - 5:30pm P.S.T.)

PREUVE D'ACHAT ORIGINALE REQUISE POUR SERVICE DE GARANTIE.

IMPORTANTE

Sólo hay que llamar nuestro departamento de servicio al cliente en caso de tener preguntas o inquietudes:

661-435-8826

(8:30am - 5:30pm P.S.T.)

SE REQUIERE PRUEBA DE COMPRA CON FECHA PARA SERVICIO BAJO GARANTÍA.

ROWAN ELECTRIC APPLIANCE LLC

Phone: 661-435-8826