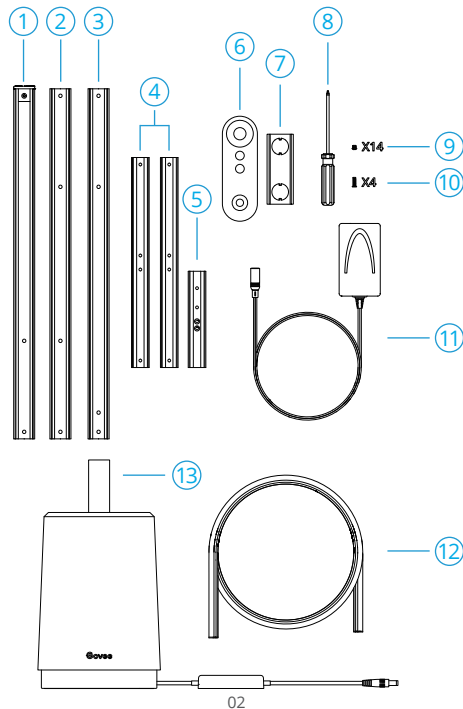


For the installation video tutorial

- Visit the Govee Lyra floor lamp product page On [Store.Govee.com](https://www.govee.com)
- Search “Govee Lyra Floor Lamp” on Amazon or YouTube



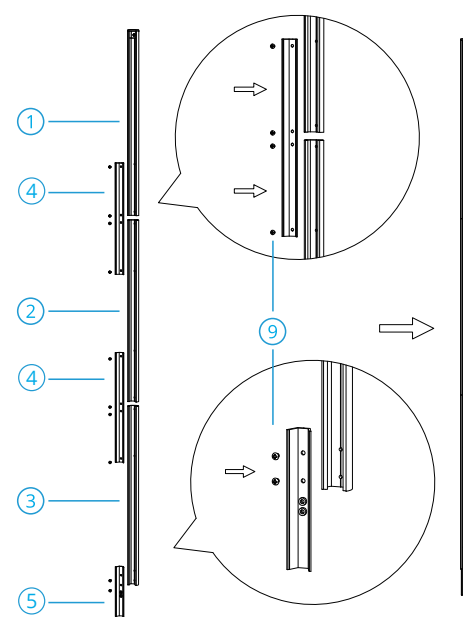
In the Box

①	Metal Slot 1 (Top with a cover)
②	Metal Slot 2 (With 4 symmetrical holes)
③	Metal Slot 3 (With 4 asymmetrical holes)
④	Metal Connecting Part
⑤	Metal Connecting Part (For the lamp base)
⑥	Remote Controller
⑦	Remote Controller Holder
⑧	Screwdriver
⑨	Short Screw x14 (4 extra)
⑩	Long Screw x4 (2 extra)
⑪	Power Adapter
⑫	Silicone Strip Light
⑬	Lamp Base

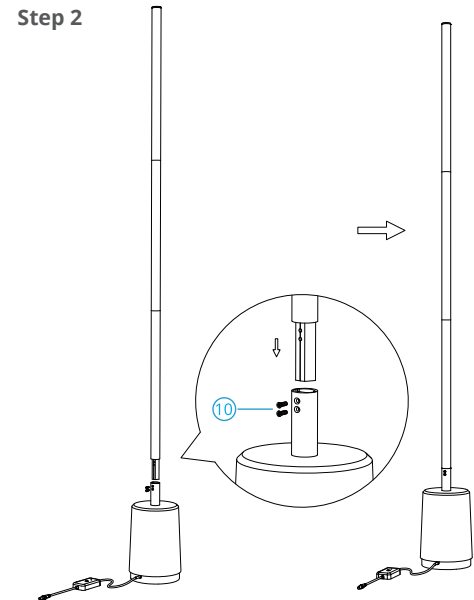
Installation Step

Step 1

Assemble the lamp pole: Align the three metal slots in the correct sequence and connect them with the 3 metal connecting parts. Use the short screws in the corresponding holes to secure each connecting part to the metal slots.

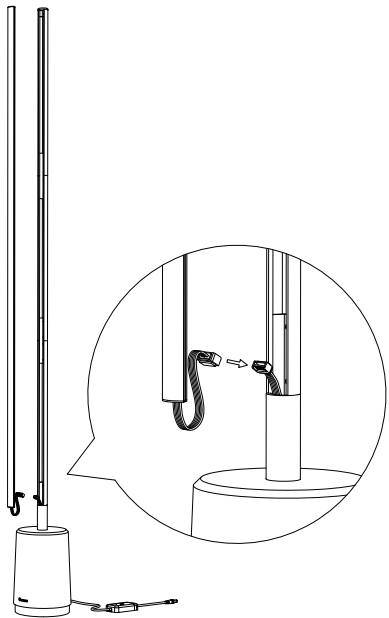


Step 2



Connecting the lamp pole and lamp base: Insert the connected lamp pole into the lamp base. Use the long screws to secure the final connecting part via the two holes on the base.

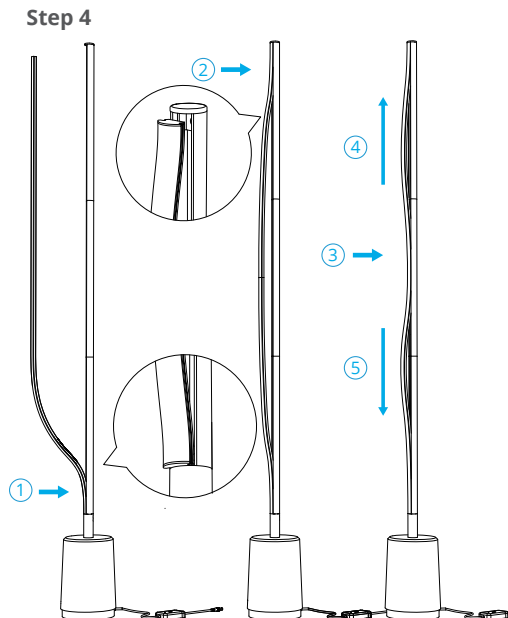
Step 3



Straighten the silicone strip light. Connect the wires on the silicone strip light to the wires in the port of the lamp base (wires should be connected by color).

02

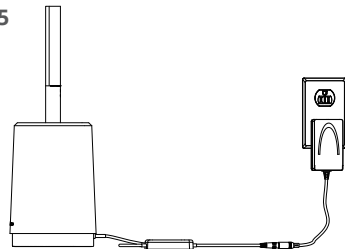
Step 4



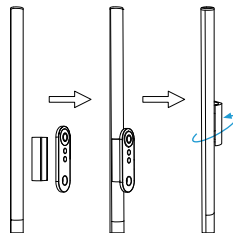
Ensure the exposed wires are inside the lamp base. Attach the silicone strip light by following the image above. Finally press the strip light from the middle outwards to the two ends.

02

Step 5

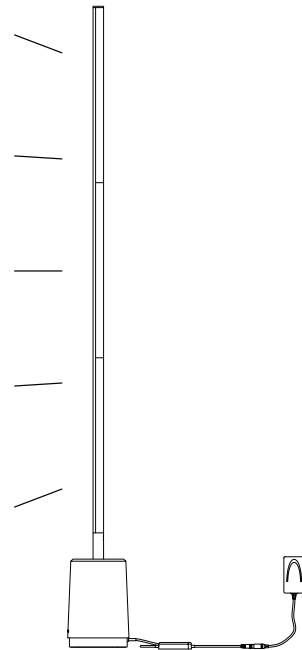


Connect the adapter to the cable of the lamp base and plug the adapter into a socket. Then you can start using the product.



Optional:
Attach the holder to the lamp pole and then the remote controller. Rotate the holder to detach it from the lamp pole if you need to remove it.

02



02

Govee

Govee Lyra Floor Lamp Quick Start Guide