



# The Travis Owner's Manual

## Thank you and welcome!

Thank you for purchasing your new DuFrane Watches Barton Springs III! From Austin, Texas, I am committed to designing and engineering stylish pieces that will provide years of trouble-free timekeeping. This guide provides operational instructions, as well as best practices, for caring for your new timepiece.

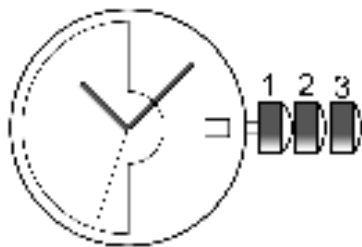
*Steven*

Founder

## Table of Contents

- Operation
- Time Setting
- Adjusting the Bracelet
- Basic Care
- Warranty

## Operation



**1-** unscrew crown counter clockwise, crown will gently pop out for manual winding

**2-** gently pull out crown one click to set date if applicable  
(If your Travis has no date window, no date setting needed)

- 3-** gently pull out crown second click to set time  
(This halts the second's hand, also called hacking)

## Time Setting

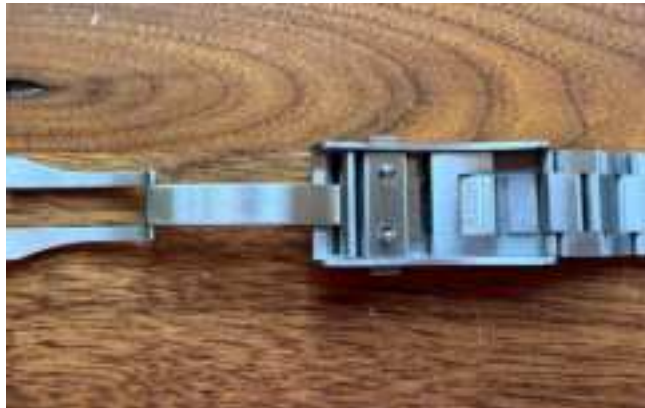
The Travis uses a Swiss Sellita SW200-1 automatic movement. An automatic movement actually winds itself with the normal daily movements of your wrist. If your watch has sat unworn for a few days and has stopped, simply unscrew the crown and gently wind the stem 15-20 turns. This will start the watch and you can then set the time and date. When fully wound and then not worn, the Travis will continue running for approximately 35-40 hours. It is recommended to set the time first before adjusting the date, noting if it is set to AM or PM. Meaning, when the time passes 12:00 position, the date either changes or does not (this is not required for No Date version).

NOTE: Date correction should not be done when the time is between 8pm to 2am as the watch gearing will already be aligning itself to change the date at 12am.

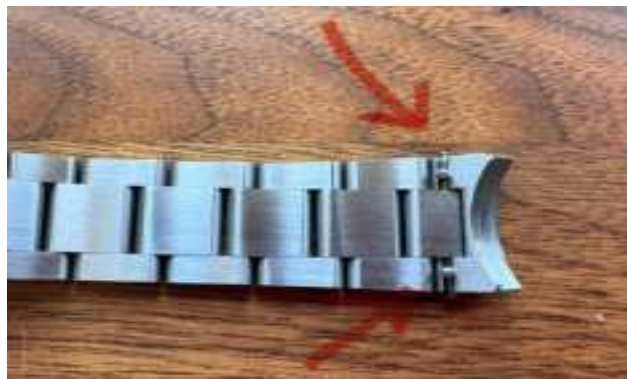
Always make sure to screw the crown back flush with the case after winding or adjusting the time. This ensures the case maintains its' water integrity.

## Adjusting the Bracelet

Your Travis includes the D|Adjust buckle system, which means you can easily adjust the size of the bracelet by up to 10mm, simply by pressing on the "PUSH" spring loaded lever on the back of the buckle. You will see/feel some small ribs on the lever. Depress this to release the adjusting glide, and move to your desired position.



The bracelet also includes the D|Change feature which allows you to remove the bracelet without any tools. There are two small knobs on the spring bars located on the back side on the solid end links. Using your fingernails, squeeze the spring bar together via the knobs, and pull to remove the bracelet.



NOTE: It is highly recommended that all screw pins on the bracelet are affixed with a tiny dab of Loctite Blue 242. During normal wear, the screw bars may unscrew. During initial sizing by a reputable jeweler or if you do this yourself, it is a best practice to remove all screw pins and reinsert after a tiny drop of Loctite is applied. *DuFrane is not responsible for lost pins or potential damage caused by these screw pins coming unseated.*

## Basic Care

Your Travis is made with high strength, durable 316L stainless steel, and hardened to 800 Vickers with our D|Protect System. This means, it is 5.5 times more scratch resistant than normal 316L. It should withstand normal daily bumps and knocks quite effectively. Additionally, the sapphire crystal is extremely hard and very scratch resistant, second only to diamonds. Any soft cloth works very well to clean the crystal and case to remove light dirt and smudge marks.

**Water-** The Travis is rated for 656 feet of water pressure, or 200 meters (20ATM). If you do take your Travis into saltwater, it's a good idea to simply run fresh water over it to clean off any salt residue. It is also recommended to remove your watch before hot water activities (such as hot tub or shower). The differences in expansion rates for silicone/rubber (the gaskets that seal the watch) and the steel case itself vary, so there is a slight possibility of introducing water inside the case in extreme examples. It is very unlikely, but it is still a best practice to remove your watch before entering hot water.

## WARRANTY

Your Travis comes with an international two-year warranty, starting from the Date of Shipment as noted on your Warranty Card. Since I do not operate a retail store, but rather I build each piece and ship it directly to you, the Date of Shipping will be noted on each Warranty Card (so keep it!).

What does this mean? If your DuFrane Watch fails due to a manufacturing defect resulting in normal use, we will replace free of charge any defective component appropriately recorded by our technical services team during the warranty period. Simply fill out the information on the Warranty page on [www.dufranewatches.com](http://www.dufranewatches.com) to start the process.

What isn't covered? Accidental damage, scratches, theft and normal wear and tear are not warrantable items. Additionally, this warranty does not cover any damage to the watch case, crystal, watch bracelet / band, bezel, straps, screws, crown/stem, finishes, clasps/buckles, or any other physical damage to the watch. Don't improperly use or mistreat your watch, and it can last for decades.

## MAINTENANCE

Since only genuine Swiss movements are used, any reputable watch repair facility can tune and perform regular maintenance. It is recommended that every 5 years you simply bring your watch into a watch repair facility for service, unless you notice performance issues such as running fast or slow by more than +/- 3 minutes a day. These are mechanical marvels. However, they rely on jewels and oils to keep friction to a minimum. And just like anything mechanical (a car, motorcycle, guitar...), maintenance needs to be performed.

## CONTACT

Should you need to reach us for anything, please email us at [info@dufranewatches.com](mailto:info@dufranewatches.com)

[www.dufranewatches.com](http://www.dufranewatches.com)

IG dufrane\_watches