

MANUAL

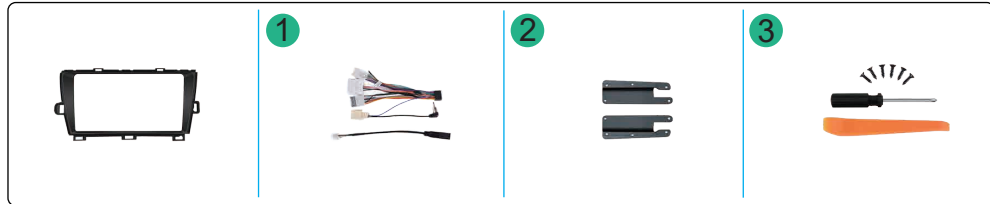
For Toyota PRIUS 2012 / C7204

Central Control Disassembly and Operation
Post-installation rendering



TOOLS REQUIRED FOR DISASSEMBLY

1. Wire
2. Mounting bracket
3. Installation tools



Disassembly:

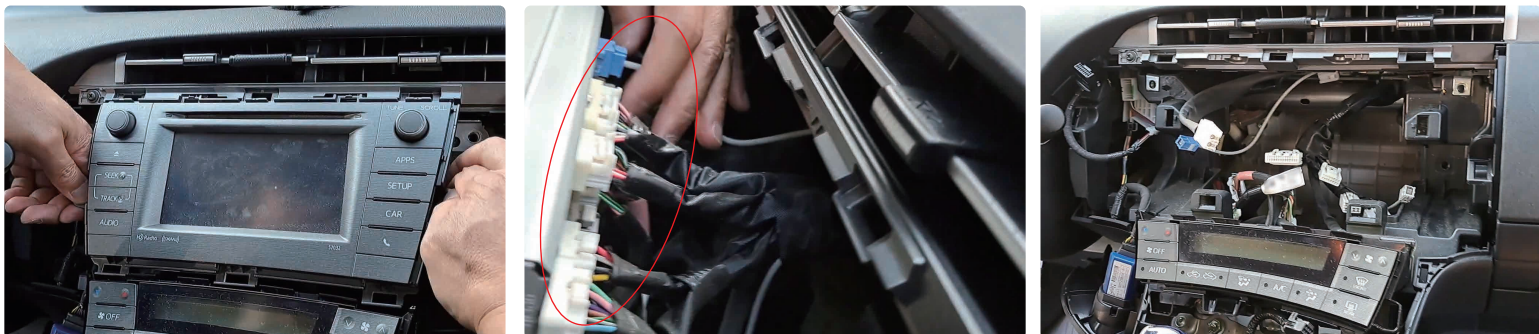
- 1 Use a pry bar to pry open the base of the gear shift lever, then pry open the center console decorative trim and remove it.



- 2 Pry open the outer frame of the radio, disconnect the connecting wires, then pry open the ignition key panel, and then unscrew the four screws on both sides of the radio.



- 3 Take out the car radio, unplug the wires connected to the original vehicle, and remove the radio.



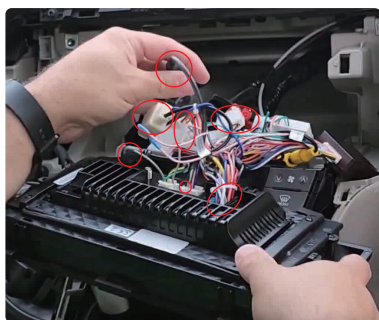
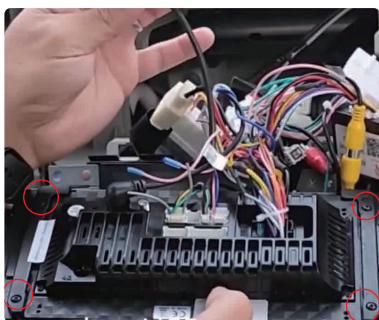
PROPOSE

Before starting the replacement job, you should prepare tools such as a plastic pry tool and a screwdriver, and make sure the car's power is cut off during the installation.

Installation

(If the wiring harness does not match, please contact customer service to request the correct wiring harness)

- 1 Secure the new radio onto the car frame using the mounting bracket, tighten the screws on both sides, then connect the wires from the radio to the original vehicle's wires. Reattach the radio to the center console, tighten the four screws on both sides, and reinstall the ignition key panel.



- 2 Reinstall the center console decorative trim around the radio, then put back the base of the gear shift lever. The installation of the new radio is complete.



COMPARATION

Effect of Installation



GENTLE REMINDERS

Due to the complexity of the product structure, you may encounter some problems during installation. If you still have any questions about the installation after reading this manual, you can contact us and we will respond to you within 24 hours. Don't worry; we will do our best to solve the problem for you until you are satisfied.

After-sales email: cheyang728@gmail.com

WARN FCC WARNING

This device complies with Part 15 of the FCC Rules. Operation is subject to the following two conditions:

- (1) This device may not cause harmful interference.
- (2) This device must accept any interference received, including interference that may cause undesired operation