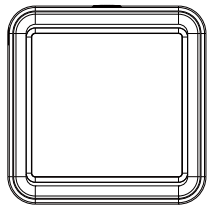


WiFi Version

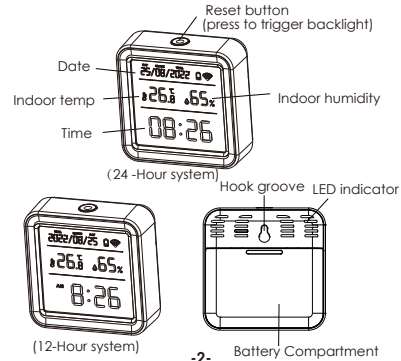
Temperature & Humidity Sensor with LCD Screen & Backlight

User Manual



Model: TH08

Product Presentation:



-2-

Specification:

Size: 56*56*23 mm
Battery: LR03-1.5V/AAA*3 (Alkaline battery)
Wi-Fi Protocol: 2.4GHz IEEE 802.11b/g/n
Temperature Measure Range: -9.9°C ~ 60°C
Temperature Accuracy: $\pm 1^\circ\text{C}$
Humidity Measure Range: 0% RH~99% RH
Humidity Accuracy: $\pm 5\%$ RH

-3-

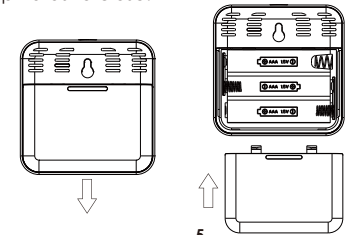
Checklist before using the device:

- Your smartphone has connected to a 2.4GHz Wi-Fi.
- You have input the correct Wi-Fi password.
- Your smartphone must be Android 4.4+ or iOS 8.0+.
- If the numbers of devices connected to Wi-Fi router reach the limit, you can try to disable a device to vacate the channel or try with another Wi-Fi router.

-4-

How to Use:

Push the cover of battery compartment downwards, install 3 pcs Alkaline batteries in the direction of positive and negative pole, then point to 2 slots, push the cover upwards to close.



-5-

How to set up:

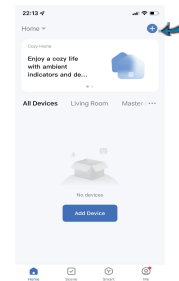
- Use your smartphone to scan QR code, or search "Smart Life" app in Google Play Store or APP Store to download and install.



- Create an account with your mobile number and authentication code.

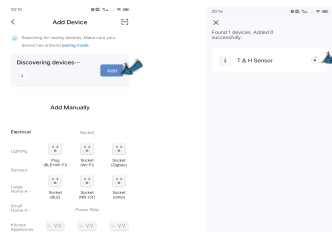
-6-

- Connect your mobile to your Wi-Fi router, click "+" at the upper right corner of homepage, then click "Add Device".

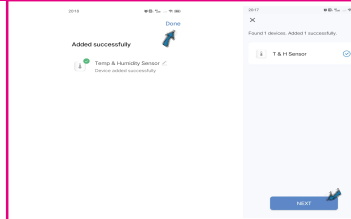


-7-

- Bluetooth Mode: The app will advise you to turn on the bluetooth in your mobile, it will search the device, enter wifi name and password, it will connect automatically.



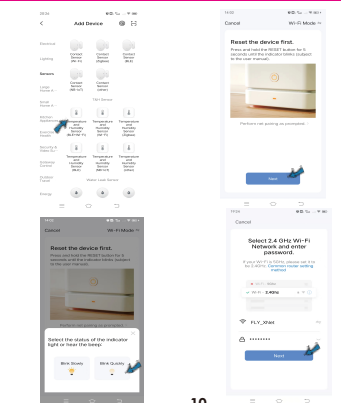
-8-



2)Wi-Fi Mode:

Select "Temperature and Humidity Sensor (BLE+Wi-Fi)" from "Sensors". Select "Blink Quickly", make sure the LED light is blinking quickly, if not, hold the reset button about 5s till indicator is blinking quickly.

-9-



-10-

Functions

1. Backlight Display

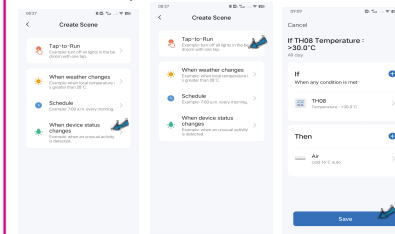
Press the reset button on the top once, the backlight will be triggered and last for about 10s. It is more convenient to browse screen clearly in darkness.



-13-

2. Smart Linkage

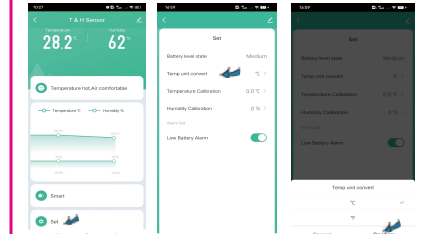
You can create linkage scene with other smart devices like Smart IR Remote control. For example, when the indoor temperature > 30 Celsius, the Air conditioner will turn on automatically.



-14-

3. Temperature Unit Switch

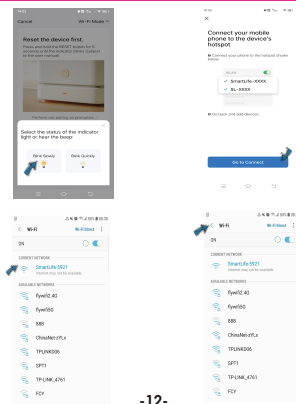
You can switch the temperature unit between Fahrenheit and Celsius in the set, then press the reset button once, it will sync both on the screen and in the app.



-15-

You can also select "Blink Slowly", make sure the LED indicator is blinking slowly, if not, hold the reset button for about 5s till the indicator is blinking slowly. Connect your mobile to the device's hotspot: "SmartLife-XXXX", then click to return to App interface, it will connect automatically.

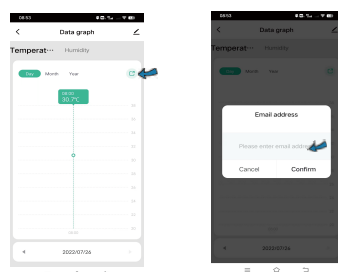
-11-



-12-

4. Temp & humidity records

You can view the historic data of temp and humidity stored for 1 year, and export to your Email address.



-16-

5. Temp & humidity Alarm

You can preset the range for temperature and humidity in the Scene page, when the temperature or humidity reaches the range, it will push instant alarm message via app.

6. Temp & Humidity Calibration

You can calibrate the temperature and humidity in the Set, select the calibration value, then press the reset button once, the temperature or humidity will sync on the screen and in the app.

7. Third-party Voice Control

Support enquiring about temp and humidity via Amazon and Google smart speaker.

-17-

FAQ

- When the temperature and humidity is more accurate?

About 30 minutes after configuration completed, the temp and humidity is closer to actual ambient environment, so the readings are more accurate and reliable.

- When the temperature and humidity on the screen is not sync with the data in app?

- When deviation between temperature display on screen and in app is $\pm 0.5^\circ\text{C}$.
- When deviation between humidity display on screen and in app is $\pm 5\%$.

-18-

3.

- When device detects the environmental temperature change is 0.5°C or humidity change is 5% , the temp and humidity will be updated every 2 mins.
- When device detects the environmental temperature change is $< 0.5^\circ\text{C}$ or humidity change is $< 5\%$, the temp and humidity will be updated every 1 hour.

- When the backlight is triggered, the temp and humidity on the screen will be locked for 2 mins, if the backlight is triggered again within 2 mins, the temperature and humidity will be locked for no more than 15 mins.

- Please keep it away from any heat source.

-19-

- If you want to calibrate Fahrenheit, you need calibrate Celsius firstly, then switch to Fahrenheit.

- Please use Alkaline battery, and configure network connection immediately after the batteries are installed, and make sure the network works properly after configuration, if network is offline, the sensor will be always connecting network, which will consume battery power.

- Voice commands for Alexa and Google:

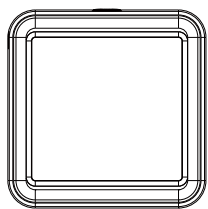
OK Google, what is the <device> humidity?
OK Google, what is the <device> temperature?
Alexa, what is the <device> humidity?
Alexa, what is the temperature of <device name>?

-20-

Zigbee Version

Zigbee Temperature & Humidity Sensor

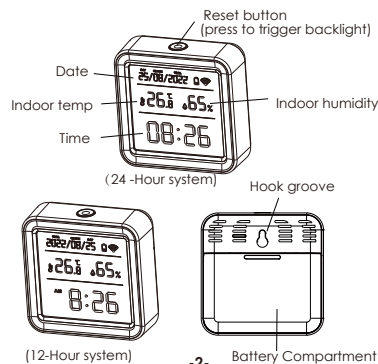
User Manual



Model: ZTH08

-1-

Product Presentation:



-2-

Specification:

Size: 56*56*23 mm
Battery: LR03-1.5V/AAA*3 (Alkaline battery)
Zigbee: IEEE 802.15.4
Temperature Measure Range: -9.9°C ~ 60°C
Temperature Accuracy: $\pm 1^\circ\text{C}$
Humidity Measure Range: 0% RH~99% RH
Humidity Accuracy: $\pm 5\%$ RH

-3-

Checklist before using the device:

- Tuya zigbee gateway is available.
- Your smartphone has connected to a 2.4GHz Wi-Fi.
- Your smartphone must be Android 6.0 + or iOS 11 +.
- If the numbers of devices connected to Wi-Fi router reach the limit, you can try to disable a device to vacate the channel or try with another Wi-Fi router.

-4-

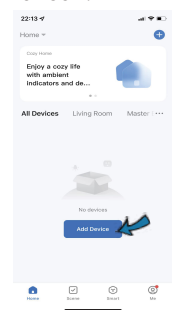
How to set up:

- Use your smartphone to scan QR code, or search "Smart Life" app in Google Play Store or APP Store to download and install.



-5-

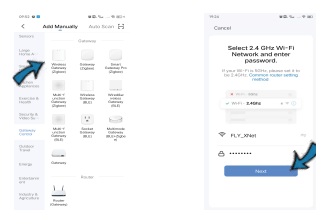
3. Connect your mobile to your Wi-Fi router, click "+" in the upper right corner or click "Add Device".



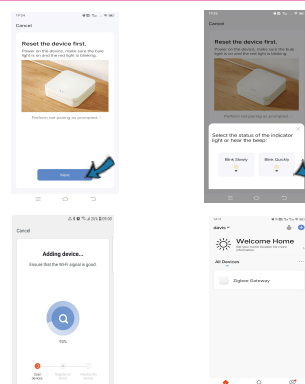
-6-

4. Select "Wireless Gateway (Zigbee)" from "Gateway Control", enter wifi name and password.

1) Select "Blink Quickly", make sure the blue light is on and red light is blinking quickly, if not, hold the reset button about 5s till red indicator is blinking quickly. It will connect.

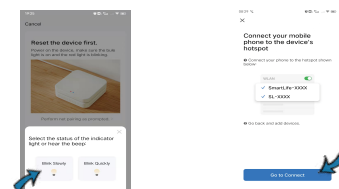


-7-

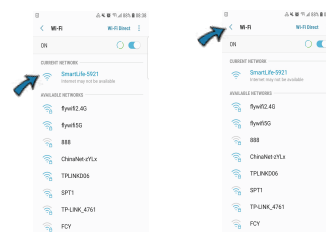


-8-

- 2) You can also select "Blink Slowly", make sure the red indicator is blinking slowly, if not, hold the reset button for about 5s till red indicator blink slowly. Connect your mobile to the device's hotspot: "SmartLife-XXXX", then click to return to App interface, it will connect to Wi-Fi router automatically, configuration completed.

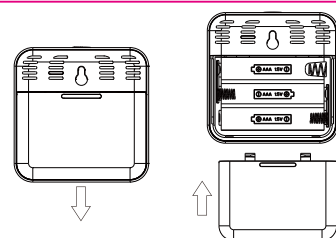


-9-



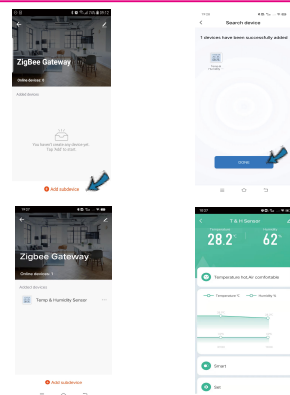
-10-

5. Push the cover of battery compartment downwards, install 3 pcs Alkaline batteries in the right direction of positive and negative pole, then point to 2 slots, push the cover upwards to close.



6. Click "+ Add subdevice", make sure the WiFi Signal on screen is flashing, if not, hold the reset button for about 5s till it is flashing, it will search devices automatically. After it is added successfully, you can use it now.

-11-

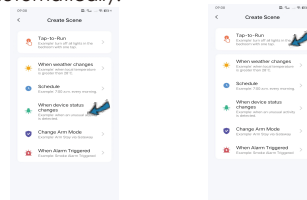


-12-

Functions

1. Smart Linkage

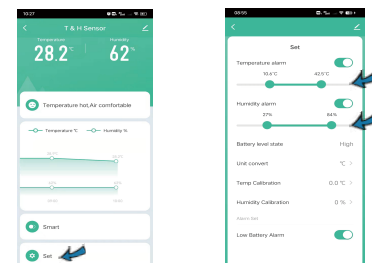
You can create linkage scene with other Tuya smart devices like Smart IR Remote Controller. For example, when the indoor temperature > 30°C, Air conditioner will turn on automatically.



-13-

2. Temp & humidity Alarm

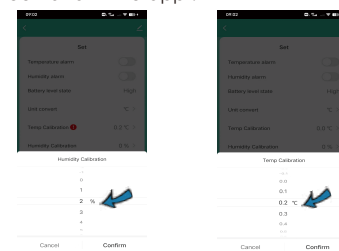
You can preset the range for temperature and humidity in the Set, when temperature or humidity exceeds the range, it will push instant alarm message via app.



-14-

3. Temp & Humidity Calibration

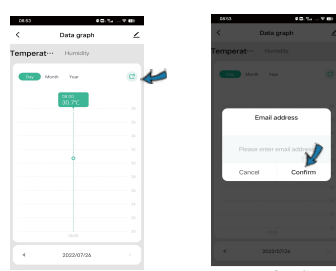
You can calibrate the temperature and humidity in the Set, select the calibration value, then press the reset button once, the temperature or humidity will sync on the screen and in the app.



-15-

4. Temp & humidity records

You can view the historic data of temp and humidity stored for 1 year, and export to your Email address.



-16-

5. Temperature Unit Switch

You can switch the temperature unit between Fahrenheit and Celsius in the set, then press the reset button once, it will sync both on the screen and in the app.

6. Low battery Alarm

When the battery power level is low, it will push alert message via app, remind you to replace batteries timely.

7. Third-party Voice Control

Support enquiring about temp and humidity via Amazon and Google smart speaker.

-17-

FAQ

1. When the temperature and humidity is more accurate?

About 30 minutes after configuration completed, the temp and humidity is closer to actual ambient environment, so the readings are more accurate and reliable.

2. When the temperature and humidity on the screen is not sync with the data in app?

- a) When deviation between temperature display on screen and in app is $\pm 0.5^\circ\text{C}$.
- b) When deviation between humidity display on screen and in app is $\pm 5\%$.

-18-

3. When the temperature and humidity on the screen is sync with the data in app?

- a) After network configuration completed.
- b) When the device reports the temperature and humidity to Tuya cloud.
- c) When device detects the environmental temperature change is $\pm 0.5^\circ\text{C}$ or humidity change is $\pm 5\%$, the temp and humidity will be reported every 2 mins.
- d) When device detects the environmental temperature change is $< \pm 0.5^\circ\text{C}$ or humidity change is $< \pm 5\%$, the temp and humidity will be reported every 30 mins.

-19-

4. Please use Alkaline battery, and configure network connection immediately after the batteries are installed, and make sure the network works properly after configuration, if network is offline, the sensor will be always connecting network, which will consume battery power.

5. Please keep it away from any heat source.

6. Voice commands for Alexa and Google:

OK Google, what is the <device> humidity?
OK Google, what is the <device> temperature?
Alexa, what is the <device> humidity?
Alexa, what is the temperature of <device name>?

-20-